

APPENDIX I

Data Acquisition Equipment Summary Table

Data Acquisition and Processing Software Summary Table

Summary Table of Data Acquisition Equipment

Equipment Description	Serial Number	Dates Used
RUDE		
Reson Seabat 9003 SWMB	10496-447020	all
Odom Echotrac Mk II VBES	9641	all
Edgetech 272-T SSS Towfish	various*	all
Edgetech ACI interface	26247	all
Seatex Seapath 200 Navigation System	0544	through DN 254
Seatex MRU-5 H/P/R sensor (standalone)	unknown	after DN 254
Trimble DSM-212L DGPS Receiver	0220227632	all
Magnavox MX-50 Beacon Receiver	079	all
Seabird Seacat SBE-19 CTD	1251	through DN 262
	1991	all
	1060	after DN 262
Odom Digibar Pro SV Sensor	98013	all
Sperry Mk-32 Gyrocompass	unknown	after DN 254
Launch 1419		
Odom Echotrac Mk II VBES	9643	all
Edgetech 272-T SSS Towfish	various*	all
Edgetech ACI interface	27569	all
Starlink DNAV-212 DGPS Receiver	850	all
Launch 1419		
Innerspace model 448 VBES	203	all
Edgetech 272-T SSS Towfish	various*	all
Edgetech 260TH SSS Recorder	16673	all
Trimble DSM-212L DGPS Receiver	0220159722	all

*At the start of RUDE's 2001 field season, the ship was issued three Edgetech 272T SSS towfish from the NOAA Mission Support Division MOC-A depot for use on RUDE and her associated survey platforms. Due to the age of these towfish, several serial numbers were illegible. As the season progressed, problems developed with some towfish which were returned to MSD and replaced. Accurate records of which towfish were used on which vessel, and when towfish were returned to MSD and replaced were not kept.

Summary Table of Data Acquisition and Processing Software

Software Description	Version	Dates Used
Coastal Oceanographics Hypack Max	various*	all
Triton Elics International ISIS	5.29	all
Trimble TSIP Talker	2.00	all
Starinit	unknown	all
HSTP HP Tools	10.1.5	all
HSTP Velociwin	5.05	through DN 289
	6.01	after DN 289
CARIS HIPS and SIPS	4.3.2	all
HSTP Pydro	various**	all
Mapinfo Professional	5.5	through DN 273
	6.5	post DN 273
Vertical Mapper	2.5	all

*Several versions of Hypack Max were provided by HSTP personnel during the 2001 season, as minor software bugs were identified and corrected by the vendor. Accurate records were not kept of when these upgrades were installed on RUDE and her associated survey platforms.

**Pydro was under development during the 2002 Field Season. New releases were distributed approximately monthly, often with more frequent unofficial "updates" in between, making it difficult to track which version was used to analyze what data at any given time. Final processing of all surveys was completed in Pydro v2.5.2.

APPENDIX II: Data Acquisition and Processing Flow Diagrams

RUDE Data Acquisition Setup, Pre-DN254

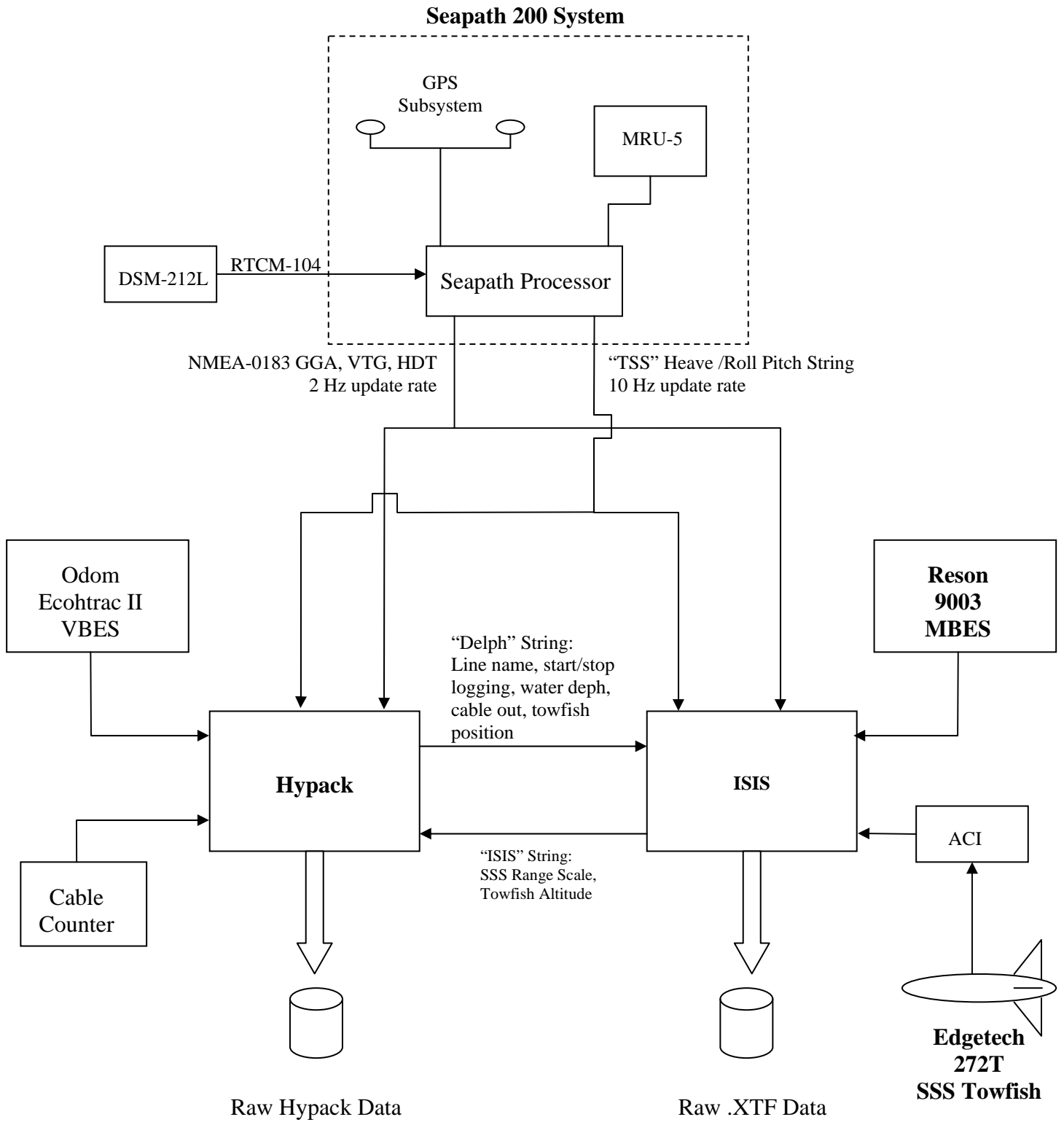
RUDE Data Acquisition Setup, Post-DN254

Launch 1419 Data Acquisition Setup

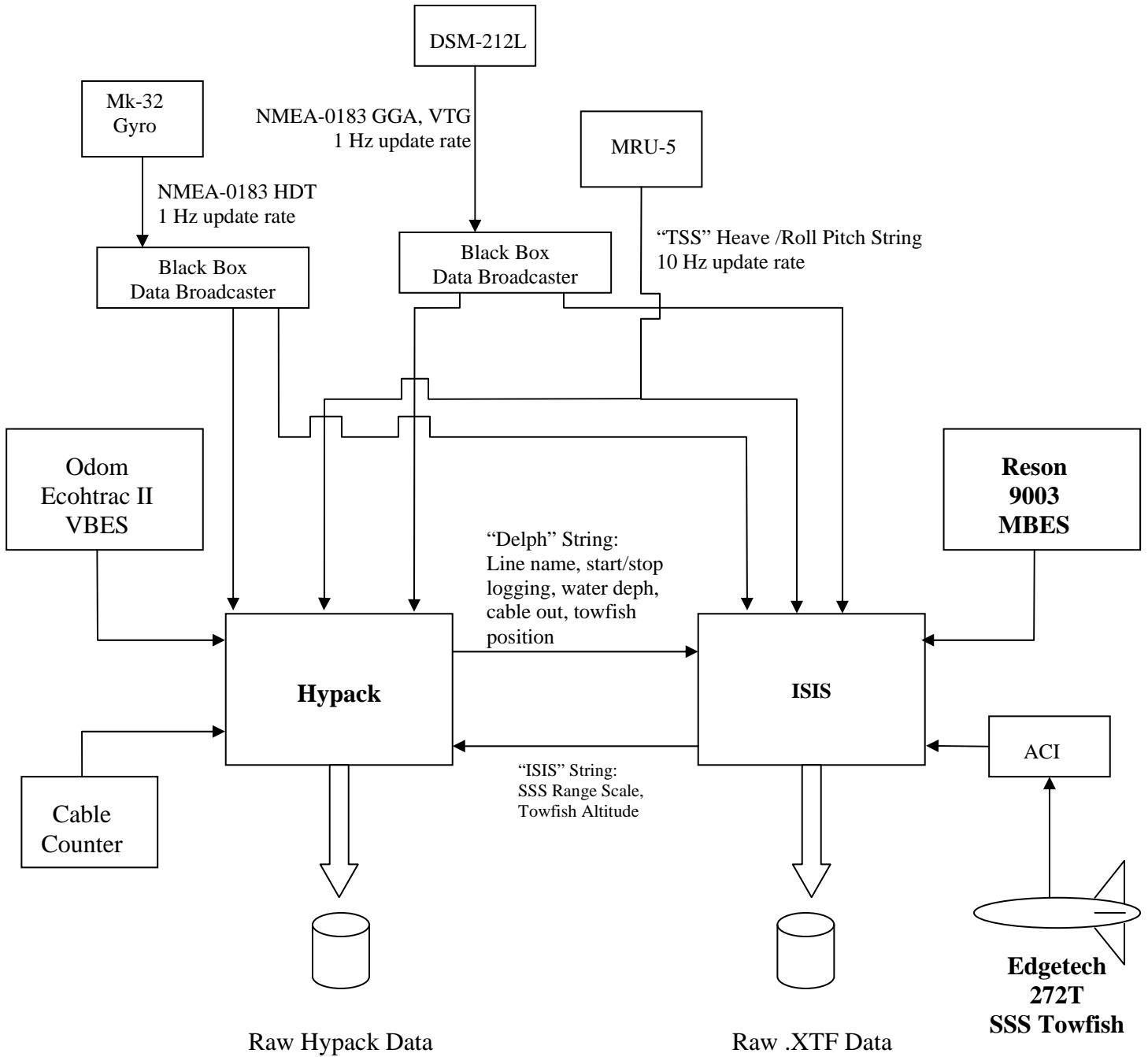
Launch 1017 Data Acquisition Setup

CARIS Data Processing Diagram

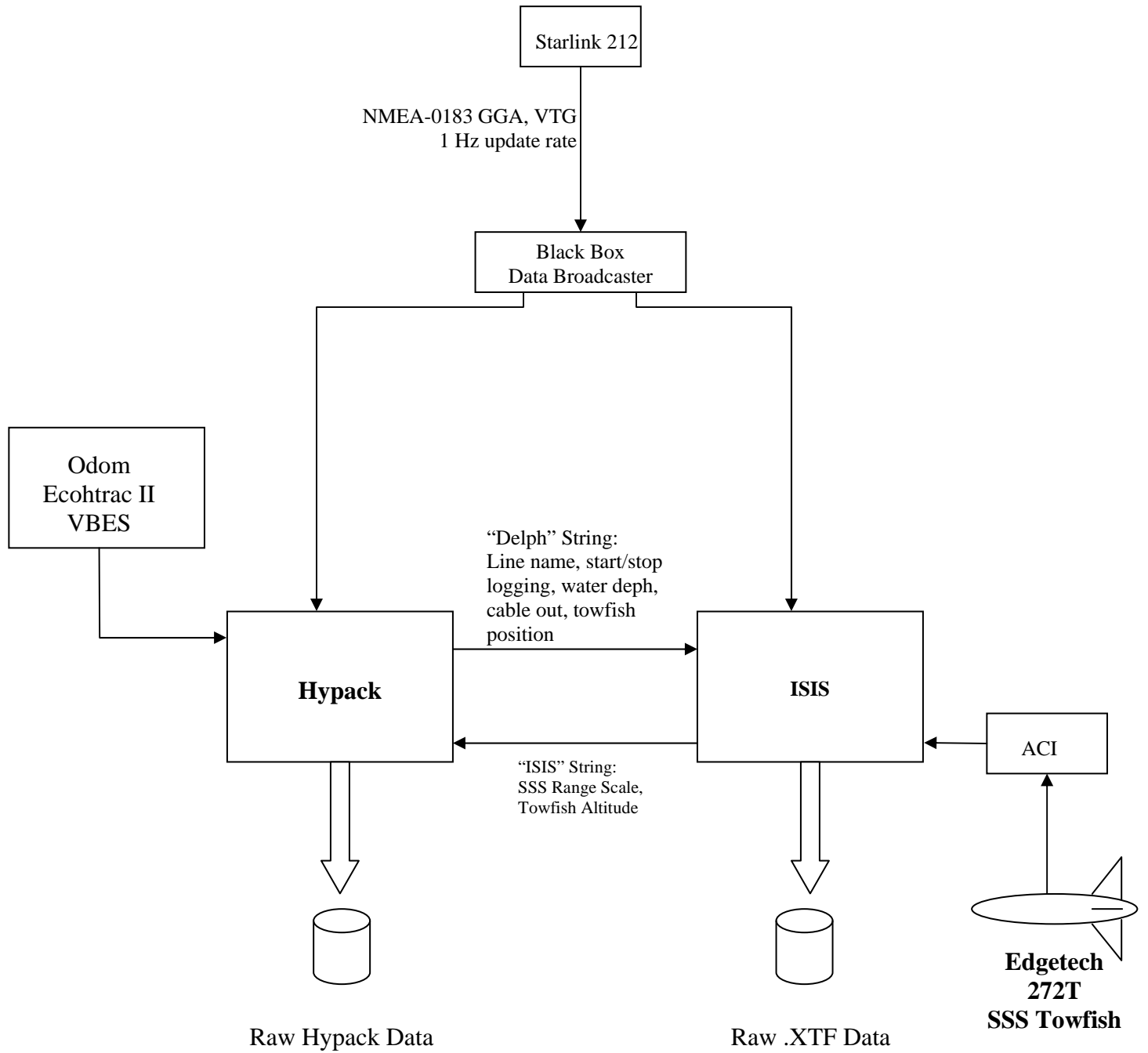
Pydro Data Processing Diagram



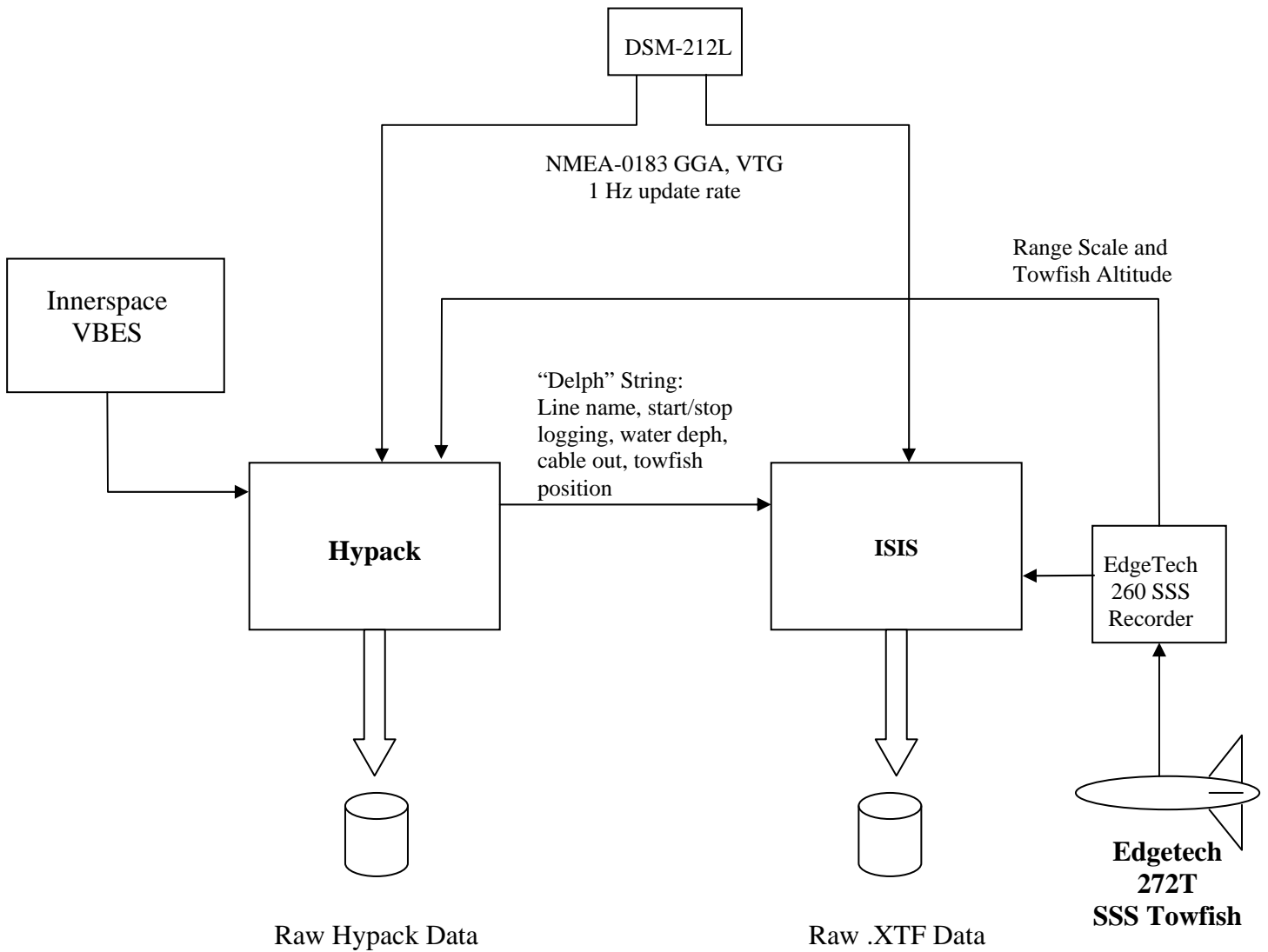
**RUDE 2001 Data Acquisition Setup
Pre-DN254**



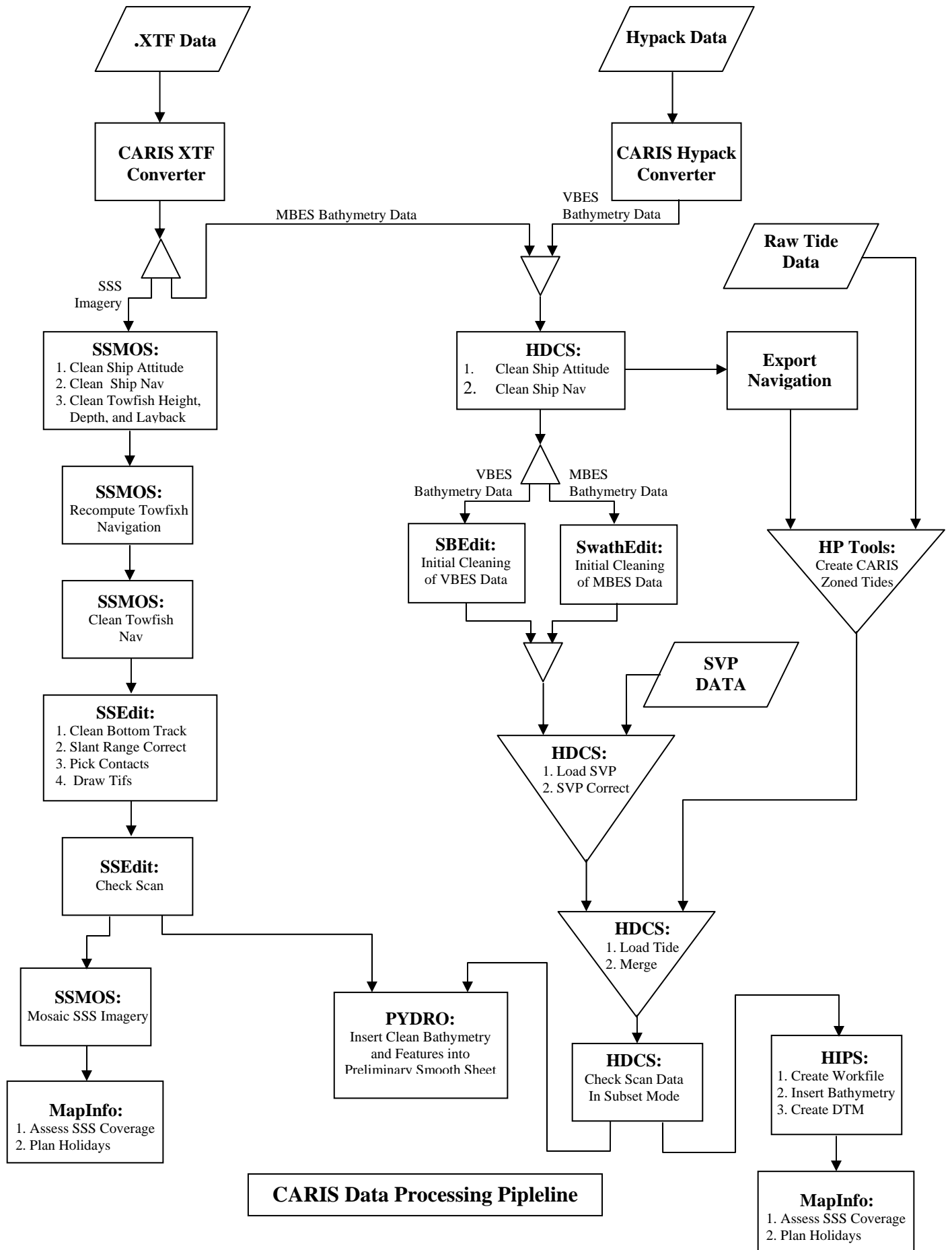
**RUDE 2001 Data Acquisition Setup
Post-DN254**

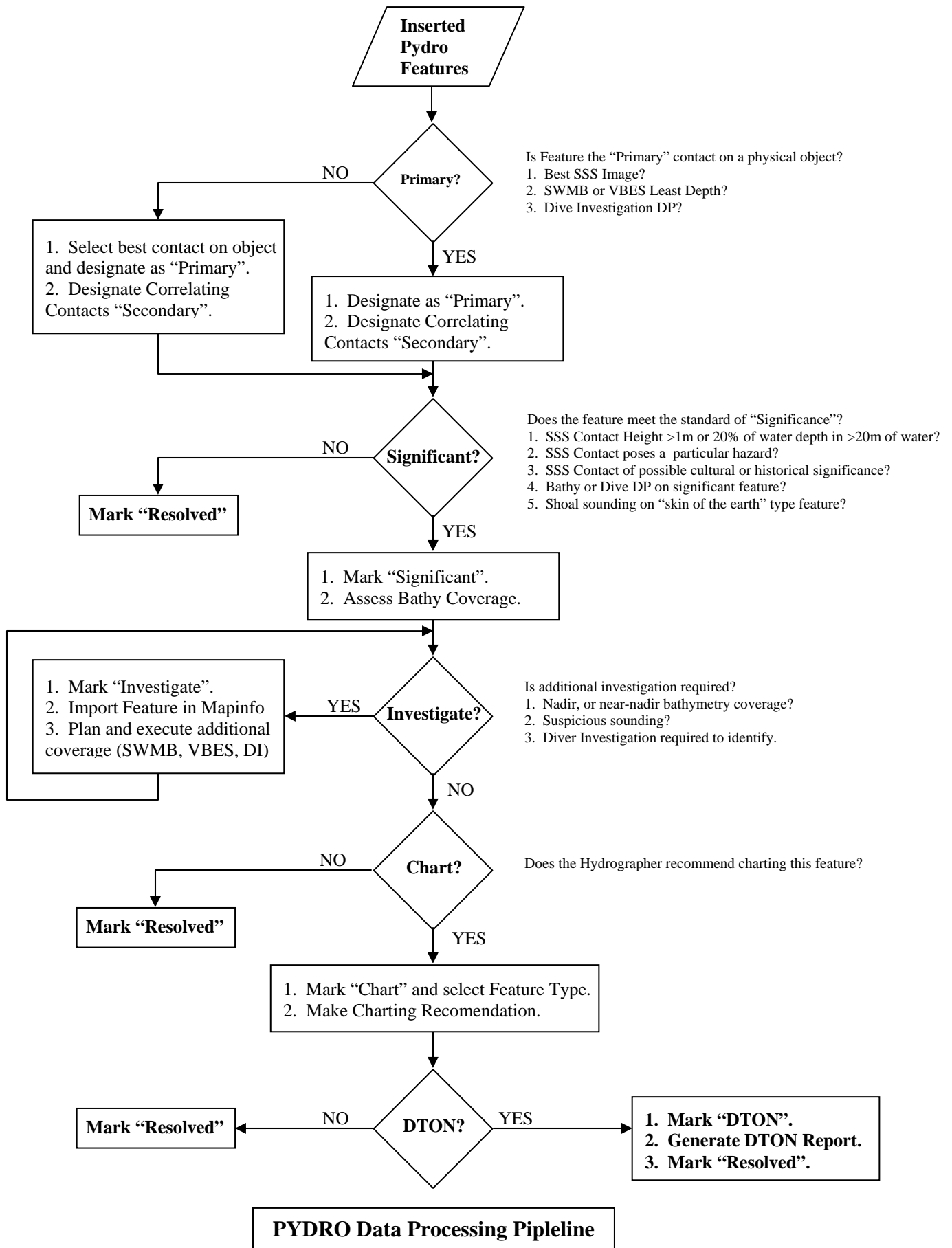


**Launch 1419
2001 Data Acquisition Setup**



**Launch 1017
2001 Data Acquisition Setup
DN 331-341**





APPENDIX III

RUDE Offset Diagram

RUDE CARIS Vessel Configuration File Reports

Launch 1419 Offset Diagram

Launch 1419 Vessel Configuration File Reports

Launch 1017 Offset Diagram

Launch 1017 Vessel Configuration File Reports

APPENDIX IV

RUDE Settlement and Squat Report

Launch 1419 Settlement and Squat Report

RUDE Reference Surface Report

Lead Line / Divers Least Depth Gauge Comparison Report

CTD Calibration Reports

Digibar Pro Calibration Reports

Divers Least Depth Gauge Calibration Report

Level Calibration Report