

TABLE OF CONTENTS

A. EQUIPMENT	1
A.1 SURVEY VESSEL	1
A.2 SINGLE BEAM SONAR OPERATIONS	1
A.3 MULTIBEAM SONAR OPERATIONS	1
A.4 SIDE SCAN SONAR OPERATIONS	2
B. QUALITY CONTROL	3
B.1 MULTIBEAM	3
B.1.2 PARAMETERS	4
B.2 SIDE SCAN	5
B.2.1 REVIEW PROCESS	5
B.2.2 CONTACT SELECTION	5
B.2.3 PROOF OF COVERAGE	6
C. CORRECTIONS TO ECHO SOUNDINGS	6
C.1 INSTRUMENT CORRECTIONS	6
C.2 VESSEL CONFIGURATION CORRECTIONS	6
C.3 STATIC AND DYNAMIC DRAFT CORRECTIONS	7
C.4 VESSEL MOTION CORRECTIONS	7
C.5 SOUND VELOCITY CORRECTIONS	8
C.6 TIDE AND WATER LEVEL CORRECTIONS	8
APPENDIX A - VESSEL DESCRIPTIONS	9
APPENDIX B – EQUIPMENT DESCRIPTIONS	13
APPENDIX C – CALIBRATION RECORDS	28
LETTER OF APPROVAL	29



A. EQUIPMENT

The major operational systems used to acquire hydrographic data include Odom 200 kHz Hydrotrac single beam echosounders, Simrad EM3002 multibeam echosounders, and Klein 5000 side scan sonars, and GeoAcustics side scan sonars. A combination of PCs and Sun Workstations were used to collect and process the data. All computers were networked to allow for precise time tagging and georeferencing of the data, and for efficient data transfer.

A.1 SURVEY VESSEL

Survey operations were conducted aboard the *Inez McCall*. The *Inez McCall* was leased from Cameron Offshore Boats of Cameron, Louisiana.

Vessel diagrams and specifications are included in Appendix A. The diagrams show all offsets from the vessel center reference points to the antennas and to all survey equipment. The details of the vessels include registration numbers, capacity, and equipment.

A.2 SINGLE BEAM SONAR OPERATIONS

Data from the Hydrotrac was continuously recorded and monitored in real-time as an independent check of the nadir beam (bottom-detect) of the multibeam sonar system on aboard all four survey vessels.

A.3 MULTIBEAM SONAR OPERATIONS

Survey operations were conducted using a single head Simrad EM 3002. The transducer head was mounted at the base of a pole attached to the bow of the vessel.

Multibeam sonar operations were conducted in a manner such that the accuracy and resolution standards set forth in Section 5.2 of the Specifications and Deliverables



document were met. The swath was reduced to an angular sector of 45° to 60°, which provided over 2 times water depth of coverage and ensured that the detection criteria of being able to detect a 2 x 2 x 1 meter object was met. The survey speed was generally held to under 8 knots, and with a ping rate of 6 to 8 pings per second the criterion of 3.2 beam footprints per 3 meter along track distance was met.

C&C Technologies' proprietary Hydromap software was used for data collection, processing, quality assurance, and quality control. During data collection, the quality of the data was monitored in real time. The display included a coverage map, several ping display waterfalls, and other parameter displays. These tools allowed the operator to monitor coverage, compare between single beam and multibeam depths, compare between the different positioning systems, and identify any ray-bending effects in real time. Corrective measures were made whenever necessary, ensuring that only quality data was collected. In cases where reruns were necessary due to degraded quality of data or due to lack of coverage, this was recorded and the data later rerun.

A.4 SIDE SCAN SONAR OPERATIONS

On board the *Inez McCall*, the Klein 5500 side scan sonar was operated in a towed configuration. The tow point was at the stern of the boat, 17.97 meters astern of the vessel reference center.

Survey operations were conducted at speeds averaging 6.5 knots. With the Klein 5500's multibeam technology the requirement that a 1-meter target be ensonified a minimum of three times per pass was exceeded. The side scan sonar was operated at a 100-meter range scale, with line spacing set at 90 meters, and was towed such that the fish remained between 8 and 10 meters off bottom. Confidence checks were performed a minimum of once a day.



Chesapeake Technologies Sonarwiz software was used for data collection and processing of the side scan sonar data.

B. QUALITY CONTROL

B.1 MULTIBEAM

All multibeam data was processed using Caris Hips and Sips 6.1. Prior to importing any sounding data into Caris, a Hips vessel file (.hvf) was created. This vessel file includes significant physical dimensions of the vessel, as well as error estimate values for all major equipment integral in the collection of the data. Error estimates assigned to the survey equipment utilized in determining the ships dimensions and physical offsets between equipment were based upon the manufacturers specifications. Error estimates assigned to major survey equipment used in determining water depths and horizontal positions were based upon manufacturers specifications as listed within the TPE resource link provided on the Caris web page. The vessel file used for this project is included in the Caris project submitted in conjunction with this report.

Caris project directory structures were created according to the format required by Caris. All lines converted were assigned a project, vessel, and day. Tides were applied to all multibeam data in Caris using tidal data downloaded from the NOAA CO-OPS website, and corrected using a tidal zone definition file (.zdf) supplied by NOAA. After reviewing the processed data along the edges of the tidal zones, it was determined that no alterations to the .zdf file were required. Both the tide (.tid) and .zdf are included in the Caris project submitted in conjunction with this report. An angle from nadir filter that rejected all data outside of a 52-degree angle on both sides of the swath was applied to all data. All multibeam data collected was reviewed in the swath editor, and erroneous bathymetry was rejected from the project.



Separate BASE surfaces were created for each subarea. BASE surfaces were named as recommended by the NOAA Specs and Deliverables. All BASE surfaces were created as uncertainty surfaces with a single resolution of 5 meters. All BASE surfaces were created based upon the IHO special order standards.

The standard deviation layers of the BASE surfaces were used as a basis for data cleaning. Areas of high standard deviation were investigated by all means appropriate, including the subset editor, swath editor, and comparison to side scan sonar data. If data was found to misrepresent the seafloor, it was rejected.

All contact investigation data was cleaned in the swath editor before being incorporated into a BASE surface. After data was cleaned in swath editor, the data was reviewed in the subset editor and, if needed, a designated sounding was assigned to the least depth sounding of an identified contact.

After all data had been cleaned, and all least depths on contacts had been designated, all five BASE surfaces were finalized for submission.

B.1.2 PARAMETERS

During collection the swath width was restricted to between 45° and 60°. The parameters used for processing the data for the smooth sheet are listed in the following table.

Maximum Beam Spacing:	1.2 meters
Maximum RMS Difference	0.25 meters
Maximum Raw Standard Deviation	0.40 meters
Elevation Offset	0.18 meters
Bin Size	3 meters
Minimum Points Per Bin	8



Median Percentage	60
Multi-Median Bin Size	3 meters
Multi-Median Shift Size	1 meter

B.2 SIDE SCAN

B.2.1 REVIEW PROCESS

All data was reviewed at least twice in the field. The side scan operator reviewed all data during collection and noted in the survey logs any significant features or surface/water column effects. Within hours of collection the data was reviewed for a second time by a geoscientist.

The reviewer first decided the order in which to view the lines. Since we were producing mosaics as proof of coverage it was best to view all lines in the first 100% first and then the remaining lines second. This way the coverage map that was generated during the review process contained only the data for the lines that were to be used for that particular mosaic (first or second 100% coverage).

B.2.2 CONTACT SELECTION

As each line was reviewed sonar contacts were tagged and recorded. All contacts with shadows were recorded. All existing infrastructure, such as pipelines, wells, platforms, and buoys was tagged, as were other features. Many of the targets that were tagged were described as insignificant debris that is associated with shipping and/or oil and gas field activities in the area.

All contacts which displayed a height of 1 meter or greater, calculated from shadow length, were deemed to be significant within water depths of 20 meters or less, per Attachment #1 of the Statement of Work; Specifications and Deliverables. Other contacts may have been deemed significant based on their characteristics (dimensions, strength of return, etc.). Contacts were tagged,



recorded and plotted in AutoCAD. Sonar contacts from adjacent lines were correlated and noted in the sonar contact table.

B.2.3 PROOF OF COVERAGE

As the geoscientist reviewed the data a coverage map was produced. Any gaps in coverage were noted, logged in the rerun log, and brought to the attention of the party chief and the operators on shift.

For the coverage map requirement of the interim and final deliverables we submitted side scan sonar mosaics. A mosaic for each 100% of coverage was submitted. These mosaics were generated in the field and served as another quality control tool. The mosaics were not only used for coverage but could be used to correlate contacts seen on adjacent lines. The mosaic images were also overlain with the nautical charts, sonar contact plot and bathymetry data to give a full picture of the survey area.

C. CORRECTIONS TO ECHO SOUNDINGS

C.1 INSTRUMENT CORRECTIONS

No instrument corrections were necessary.

C.2 VESSEL CONFIGURATION CORRECTIONS

C.2.1 *INEZ MCCALL*

Prior to survey operations, offsets to the antennas and other survey equipment were measured. Offsets were measured from the Central Reference Point (CRP) to all relevant points on the survey vessel (bow, stern, antennas, transducers, etc.) using traditional survey techniques incorporating plumb bobs, tape measures, and digital levels. The CRP was established as an arbitrary point on the central along track axis of the vessel within one meter of the multibeam mounting pole.



The results of the vessel survey are shown in diagram form in Appendix A.

C.3 STATIC AND DYNAMIC DRAFT CORRECTIONS

A settlement and squat test was performed on the *Inez McCall* on January 22 2008. The vertical corrections applied to the data, described in the following chart, varied with speed. All of these values are positive, indicating that the ship rides lower in the water column as speeds are increased.

Vertical Correction (feet)	Speed (Knots)
0.098425	3
0.229659	5
0.360892	7
0.754593	9

A draft tube was installed on the vessel prior to the survey. The draft tube was read once daily while at sea and the water level/draft entries were updated in each system as required. In addition to the daily readings, readings were also taken prior to each departure from the dock.

C.4 VESSEL MOTION CORRECTIONS

A POS/MV motion sensor was integrated with the multibeam echosounder aboard both the *Inez McCall* to provide real-time heave, pitch, and roll corrections.

Prior to the survey, standard patch test were performed on each vessel to determine correctors for latency, pitch, roll, and heave. Patch tests were performed in the following manor.

Latency:

Two lines were run directly over the same target. The line was run once at a slow speed (<4 knots) and again at a fast speed (>8 knots). The location of the target was



inspected and had there been a difference in its location on each of the passes, latency would have been calculated. No timing error was detected.

Pitch:

A set of reciprocal lines was run over the target at a low speed.

Heading:

Two sets of collinear reciprocal lines were run

Roll:

A set of collinear reciprocal lines was run with each head in single head mode.

A patch test was performed on board the *Inez McCall* on September 26, 2007 prior to the commencement of survey operations. The results of that test are shown below.

Roll	Pitch	Heading
-4.5°	9.3°	0.0°

C.5 SOUND VELOCITY CORRECTIONS

A Seabird with the following S/Ns was used, 5222. Casts were performed at least twice daily and more often as needed. The multibeam data was corrected for the water column sound velocity in real-time. The mean water column sound velocity was applied to the single beam echosounder data. Endeco YSI sound speed profiles were used to determine sound speed at the transducers.

C.6 TIDE AND WATER LEVEL CORRECTIONS

Tide and water level corrections were applied as set forth in the Statement of Work.

Data Acquisition and Processing Report
OPR-K387-KR



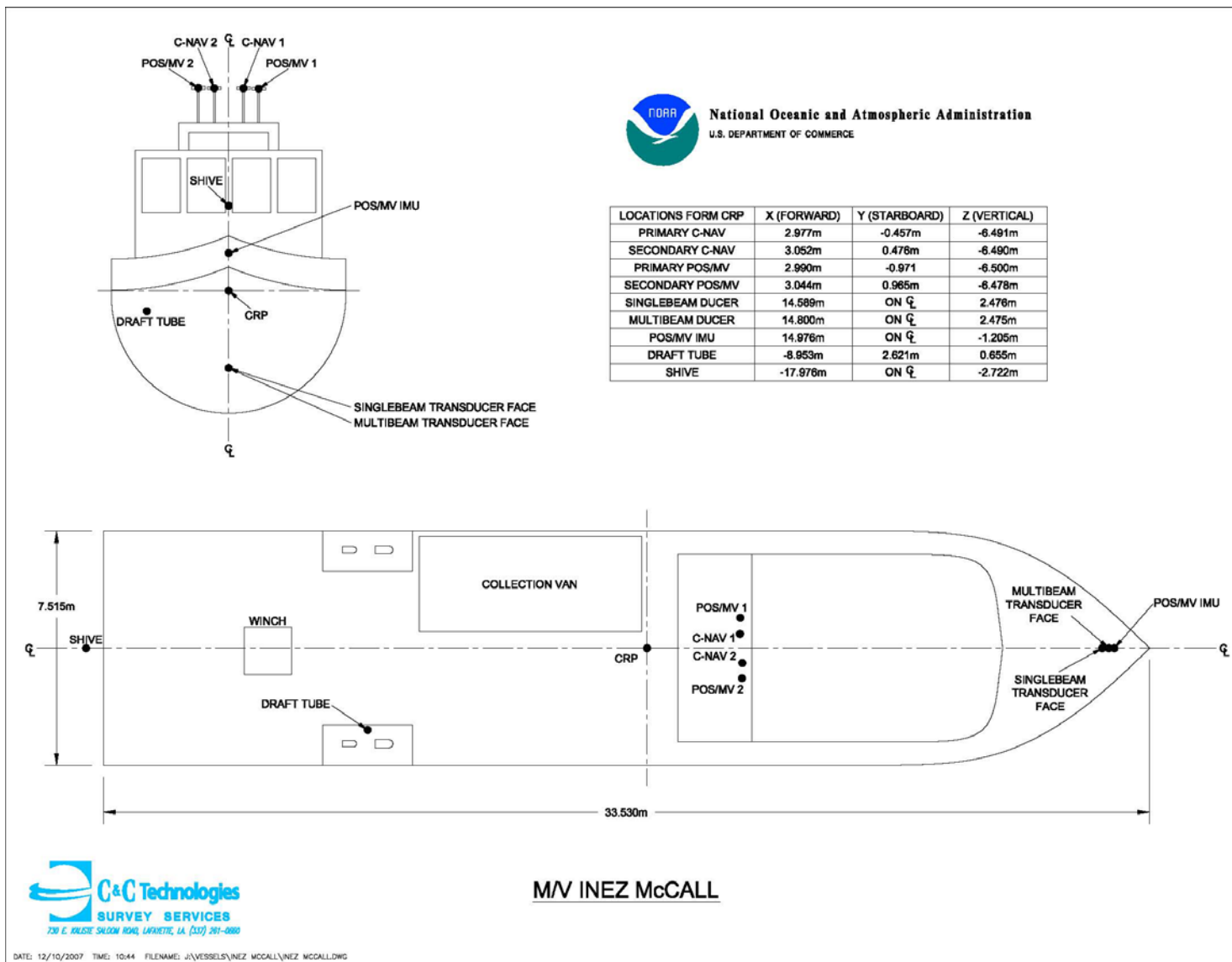
APPENDIX A - VESSEL DESCRIPTIONS

Data Acquisition and Processing Report
OPR-K387-KR



Data Acquisition and Processing Report

OPR-K387-KR





VESSEL PROFILE

Vessel Name	INEZ McCALL
Owner/Operator	Cameron Offshore Vessels
Flag/Home Port	USA/Cameron, La
US Coast Guard Official Number	648625
Year Built	1982
Place Built	Biloxi, MS
Builder	A.W. Covacevich Shipyard
Hull Number	58
Intended Service	Oceanographic research
Operational Area	Gulf of Mexico
Tonnage Certificate	Issued by ABS
Loadline Certificate	Issued by ABS
Certificate of Classification	Issued by ABS full hull & machinery

SPECIFICATIONS

Length	100 ft
Breadth	24 ft
Depth	11.6 ft
Draft (summer load)	9 ft
Gross Tonnage	92 US regulation tons
Net Tonnage	63 US regulation tons

Data Acquisition and Processing Report
OPR-K387-KR



APPENDIX B – EQUIPMENT DESCRIPTIONS

ODOM HYDROTRAC ECHOSOUNDER

The HYDROTRAC echo sounder by ODOM Hydrographic Systems, Inc. can collect analog paper records as well as digitized depth information for output to a data logger. Digital depth data can be logged directly to the navigation computer along with date, time, and position for later post processing and mapping. The system includes a recording unit with built in digitizer and transceiver, and a side mountable transducer. The unit utilizes a combination of dynamic gating and velocity fit to track the true bottom through advanced microprocessor technology, solving the normal problems associated with conventional depth sounders. For example, if the "fixed gate" mode is activated, signal digitizing can be restricted to a user-defined range, rejecting unwanted returns during bar-check calibrations.

The acoustic pulse is generated with the Model OHS 200/9 transducer, which operates at single frequency of 200 kHz with a beam width of 9°. This system is very much similar to ODOM ECHOTRAC SF3200, except that ECHOTRAC has capabilities of operating on dual frequencies of 24 and 200 kHz. The shipboard transceiver automatically adjusts power output in proportion to the return signal yielding a clear, unambiguous record in shallow as well as deep water. The self-adjusting power varies from 1 to 225 watts at 200 kHz. Return signals are optimized by Time Varied Gain (TVG) and Automatic Gain Control.



A thermal paper recording is printed in real-time where automated scale changes prevent the bottom from "running" off the chart. Scale widths are selectable in meters, 2 to 1,000, or feet, 10 to 3,000; however, routine operating scales are 10 to 100 feet. Key system parameters, i.e. velocity of sound, draft, and time, are input from the recorder's front panel. A tide correction may be introduced without altering the analog record in

Data Acquisition and Processing Report
OPR-K387-KR



any way. A line is added to the chart to indicate where the bottom would be if corrected for water level.

Recording resolutions of the HYDROTRAC, ranging from 8 mm to 4 meters dependent upon the selected scale width, permit detailed assessments of local water depths. Reference to a tidal datum permits the evaluation of navigable waterways, subsidence and scour features around seafloor based structures, and pre/post dredging or construction water bottom conditions.

Specifications:

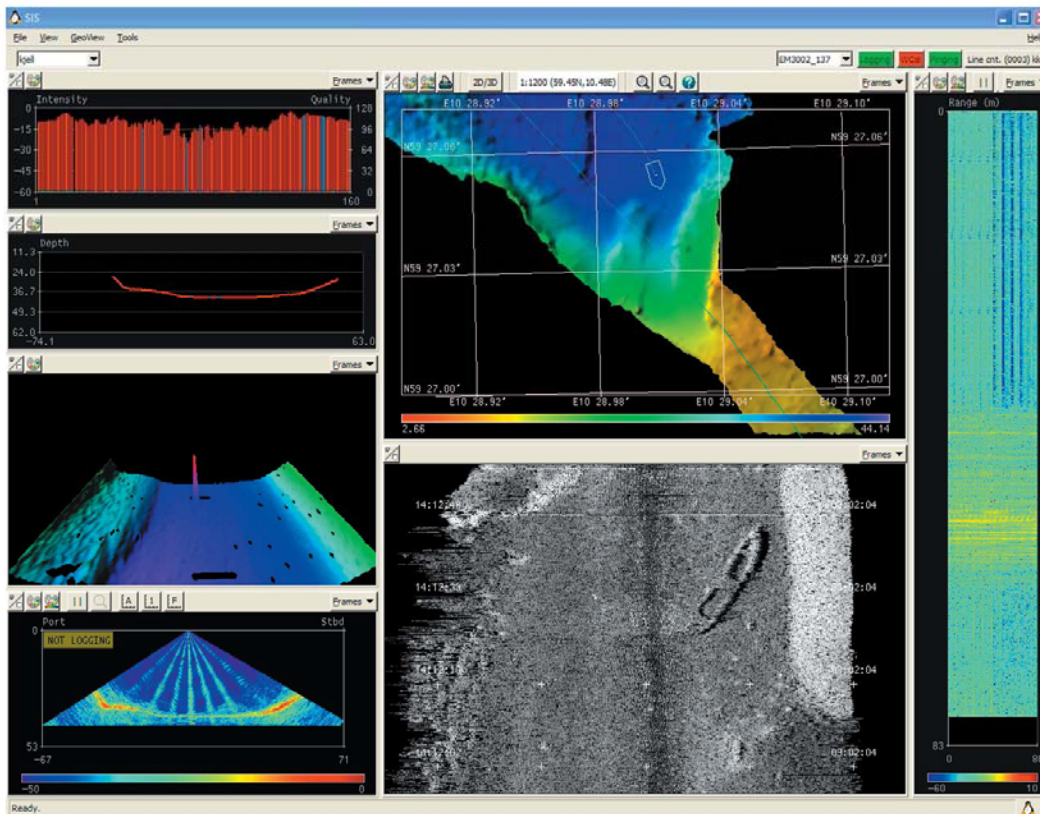
Frequency	200 kHz
Output Power	500 Watts
Power Requirement	11-28 VDC 110/220 VAC (Optional)
Ports	RS 232

EM 3002



Multibeam echo sounder

The new generation high performance shallow water multibeam



System description

Key facts

The EM 3002 is a new advanced multibeam echo sounder with extremely high resolution and dynamically focused beams. It is very well suited for detailed seafloor mapping and inspection with water depths from less than 1 meter up to typically 150 meters in the ocean. Maximum depth capability is strongly dependant on water temperature and salinity, up to 300 meters is possible under favorable conditions. Due to its electronic pitch compensation system and roll stabilized beams, the system performance is stable also in foul weather conditions.

The spacing between soundings as well as the acoustic footprints can be set nearly constant over the swath in order to provide a uniform and high detection and mapping performance. Dynamic focusing of all receive beams optimizes the system performance and resolution for short range applications such as underwater inspections.

Typical applications

- Mapping of harbours, inland waterways and shipping channels with critical keel clearance
- Inspection of underwater infrastructure
- Detection and mapping of debris and other underwater objects
- Detailed surveys related to underwater construction work or dredging
- Environmental seabed and habitat mapping
- Mapping of biomass in the water column

Features

The EM 3002 system uses one of three available frequencies in the 300 kHz band. This is an ideal frequency for shallow water applications, as the high frequency ensures narrow beams with small physical dimensions. At the same time, 300 kHz secures a high maximum range capability and robustness under conditions with high contents of particles in the water.

EM 3002 uses a new and very powerful sonar processor in combination with the same sonar head used with the popular and highly acclaimed EM 3000

system. The increase in processing power makes it possible to apply sophisticated and exact signal processing algorithms for beamforming, beam stabilisation, and bottom detection. The bottom detection algorithm is capable of extracting and processing the signals from only a part of each beam, thus making it possible to obtain independent soundings even when beams are overlapping.

EM 3002 will in addition to bathymetric soundings, produce an acoustic image of the seabed. The image is obtained by combining the acoustic return signals inside each beam, thus improving signal to noise ratio considerably, as well as eliminating several artifacts related to conventional sidescan sonars. The acoustic image is compensated for the transmission source level, receiver sensitivity and signal attenuation in the water column, so that reliable bottom backscatter levels in dB are obtained.

The acoustic seabed image is compensated for acoustic raybending and thus completely geo-referenced, so that preparation of a sonar mosaic for a survey area based upon data from several survey lines is easy. Objects observed on the seabed image are correctly located and their positions can be readily derived.

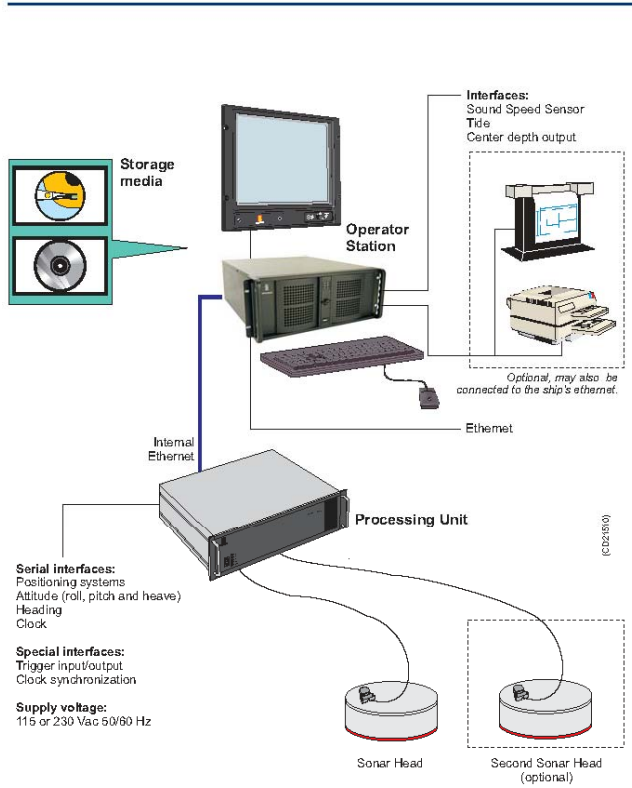
Operator Station

The Operator Station is a ruggedized PC workstation running on either Linux[®] or Microsoft Windows XP[®]. The Operator Station software, SIS, has been completely redesigned and expanded compared to the EM 3000 software, adding 3D graphics, real-time data cleaning and electronic map background.

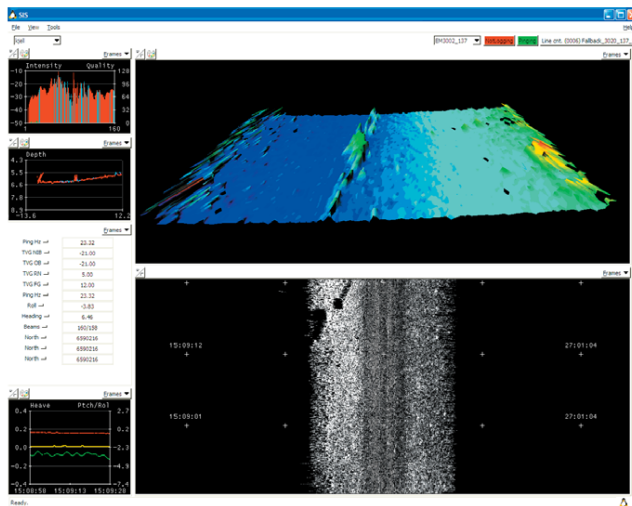
The EM 3002 can be set up to use other operational software than SIS, for example QPS "QINCY" or Coastal Oceanographics "HYPACK Max", and is also supported by software from Triton Elies International, EIVA and others.

Note that Kongsberg Maritime AS does not take any responsibility for system malfunction caused by third-party software.

- Full swath width accuracy to the latest IHO standard
- Swath width up to 10 x water depth or 200 m
- Depth range from < 1 meter to > 150 meters
- Bottom detection by phase or amplitude
- 100% bottom coverage even at more than 10 knots vessel speed
- Real-time ray bending and attitude compensation
- Seabed image (sidescan) data output
- Sonar heads for 500 or 1500 meters depth rating



Typical system configuration with desktop Operator Station, Processing Unit and one or two Sonar Heads.



This is an example on how the SIS software can be used.

Advanced functions

- Bottom detection uses a combination of amplitude and phase processing in order to provide a high sounding accuracy over the whole swath width.
- All beams are stabilized for pitch and roll movements of the survey vessel, by electronically steering the transmit beam as well as all receive beams.
- Dynamic focusing of the receive beams is applied in order to obtain improved resolution inside the acoustic near-field of the transducer.
- Swath coverage with one sonar head reaches 130 degrees, but can be manually limited while still maintaining all beams inside the active swath. For deeper waters the swath width will be reduced due to reduced signal-to-noise margin. The system will automatically re-locate all beams to be within the active swath.
- With two sonar heads the swath width will reach 200 degrees to allow for inspection of constructions up to the water surface, as well as for efficient mapping of beaches, rivers and canals.
- Operator controlled equidistant or equiangular beam spacing.
- Real time compensation for acoustic raybending is applied.
- Imaging of objects in the water column is offered as an option.

Technical specifications

Operational specifications

Frequencies 293, 300, 307 kHz
 Number of soundings per ping:
 Single sonar head Max 254
 Dual sonar heads Max 508
 Maximum ping rate 40 Hz
 Maximum angular coverage:
 Single sonar head 130 degrees
 Dual sonar heads 200 degrees
 Pitch stabilisation Yes
 Roll stabilisation Yes
 Heave compensation Yes
 Pulse length 150 µs
 Range sampling rate 14, 14.3, 14.6 kHz
 Depth resolution 1 cm
 Transducer geometry Mills cross
 Beam pattern Equidistant or equiangular
 Beamforming:
 • Time delay with shading
 • Dynamically focused receive beams

Seabed image data

- Composed from beamformed signal amplitudes
- Range resolution 5 cm.
- Compensated for source level and receiver sensitivity, as well as attenuation and spherical spreading in the water column.
- Amplitude resolution: 0.5 dB.

External sensors

- Position
- Heading
- Motion sensor (Pitch, roll and heave)
- Sound velocity profile
- Sound velocity at transducer.
- Clock synchronisation (1 PPS)

Environmental and EMC specifications

The system meets all requirements of the IACS E10 specification. The Operator Station, LCD monitor and Processing Unit are all IP22 rated.

Dimensions and weights

Sonar head:
 Shape Cylindrical
 Housing material Titanium
 Diameter 332 mm
 Height 119 mm
 Weight 25 kg in air, 15 kg in water
 Pressure rating 500 m (1500 m option)

Sonar Processing Unit:
 Width 427 mm
 Depth 392 mm
 Height 177 mm
 Weight 14.5 kg

Operator Station:
 Width 427 mm
 Depth 480 mm
 Height 127 mm
 Weight 20 kg

17.4" industrial LCD monitor:
 Width 460 mm
 Depth 71 mm
 Height 400 mm
 Weight 9.2 kg
 Resolution 1280 x 1024 pixels

All surface units are rack mountable. Dimensions exclude handles and brackets.

Kongsberg Maritime is engaged in continuous development of its products, and reserves the right to alter the specifications without further notice. "HYPACK Max" is a trademark of Coastal Oceanographics Inc. "QINSY" is a trademark of QPS.

Kongsberg Maritime AS		
Strandpromenaden 50 P.O.Box 111 N-3191 Horten, Norway	Telephone: +47 33 02 38 00 Telefax: +47 33 04 47 53 www.kongsberg.com E-mail: subsea@kongsberg.com	



KLEIN 5500 SIDE SCAN SONAR

Conventional side scan sonar systems use a single sonar beam per side to generate an image of the seafloor. The physics of this type of sonar results in degradation of image resolution with range and requires speeds of 5 knots or less to insure 100 percent bottom coverage. From a design perspective, both of these shortcomings can be eliminated by designing a side scan sonar that, through beam steering and focussing techniques, simultaneously generates several adjacent, parallel beams per side. This design approach, principally employed by military side scan sonar systems designed for high-speed mine hunting applications, has been prohibitively expensive for commercial operations. Klein Associates is the first commercial company to offer a multi-beam side scan sonar using similar design techniques to military sonars, but at a fraction of the cost.

The two main benefits of the high-speed, high-resolution 5500 systems are: higher towing speeds with no loss of bottom coverage and range independent high-resolution imagery capability. Since operation costs are dependent on the amount of at-sea time required to complete a survey, the new Klein 5500 Multi-Beam Side Scan Sonar Systems with survey speeds more than twice that of conventional side scan sonars, minimize at-sea time, thus greatly reducing survey costs.

The sonar system consists of a towfish, tow cable, transceiver/processor unit (TPU), and a PC display and control unit for viewing data. The stainless steel towfish incorporates two multi-channel acoustic arrays and a pressure bottle that houses all of the electronics and sensors necessary for sonar data acquisition, attitude sensing, system control and telemetry. The sonar and sensor data is transmitted up the tow cable via a high-speed digital telemetry link, requiring only a single coaxial or fiber-optic cable. The surface mounted TPU receives this data, performs all necessary digital processing functions on the acoustic data, and relays control command to the towfish. Processed data is then distributed to one or multiple PC Display and Control Units (DCU) via a 100 Base T



Ethernet LAN Network where the tasks of data viewing, storage and analysis can be accomplished.

The Klein 5500 is a 5-beam side scan sonar designed for hydrographic applications requiring high- resolution images of the seafloor and bottom obstructions while operating at tow speeds up to 10 knots and with an overall swath width of 300 meters. Applications of the side scan sonar include hydrographic surveys, mine hunting, pipeline surveys, debris searches, archaeological surveys, geologic surveys and autonomous underwater vehicle surveys. Specifications for the Klein 5000 are outlined below:

Towfish

- Number of beams: 5 Port / 5 Starboard
- Frequency: 455 kHz
- Pulse Length: 50 to 200 usec. (operator selectable)
- Resolution Along Track: 20 cm @ 75 meter range, thereafter increasing to a maximum of 36 cm @ 150 meter maximum range
- Resolution Across Track: Determined by selected pulse length
- Operating Speed Envelope: 2 – 10 knots @ 150 meter maximum range
- Sonar Digitization: 12 bit / channel
- Maximum Operating Range: 150 meters (300-meter swath)
- Array Length: 120 centimeters (47.2 inches)
- Body Length: 194 centimeters (76.4 inches)
- Body Diameter: 15.2 centimeters (6 inches)
- Weight in air: 70 kg (155 lbs.)
- Sensors: Heading, pitch, roll, temperature and pressure
- Tow Cable: Coaxial or fiber

Transceiver Processor Unit

- Width: 19-inch rack mount
- Height: 13.2 centimeters (5.2 inches)
- Depth: 54.6 centimeters (21.5 inches)
- Weight: 12.7 kilograms (28 pounds)
- Voltage: 115/240 VAC; 50/60 Hz
- Power: 120 Watts
- Navigation Input: NMEA 0183
- Data Output: 100 Base-T Ethernet LAN
- PC Display/Control Unit: Klein ruggedized or customer supplied PC



CODA OCTOPUS F180 INERTIAL ATTITUDE AND POSITIONING SYSTEM

The Coda Octopus F180 is a highly accurate inertial attitude, heading and positioning system that provides high- speed vessel motion data including heave, pitch, roll, heading and position in real time. The system uses the fastest Kalman filter on the market enabling it to track small and fast changes in orientation and calculate their overall error contribution and correct for them much faster. Mobilization is minimal due to the automatic self-alignment between the IMU and GPS antenna and automatic calculation of GPS lever arms and GAMS angles. The F180 uses velocity rather than acceleration to measure heave, thus reducing heave drift.

The technical specifications of the system are provided below.

PERFORMANCE*	RTK	DGPS
Position accuracy (CEP)	0.02 / 0.2**	0.5 – 4.0m
Velocity	0.03ms-1	0.03ms-1
Roll and pitch	<0.025°	<0.025°
True heading	1m baseline – 0.1° 2m baseline – 0.05° 4m baseline – 0.025°	1m baseline – 0.1° 2m baseline – 0.05° 4m baseline – 0.025°
Heave	5% of heave amplitude or 5 cm	5% of heave amplitude or 5 cm
PHYSICAL	Component	Specification

Data Acquisition and Processing Report
 OPR-K387-KR



Weight	Splash-proof 'one-box' solution	2.5kg
Power	Splash-proof 'one-box' solution	9 – 18Vdc, 25 Watts
Antennas	Novatel Pinwheel Technology with integral choke rings to reduce multipath effects	

INTERFACES	Function	Output
Ethernet Interface (100base-T)	Control, set-up and diagnosis of F180 using F180 windows application software.	High data rate comprehensive information output packet (100Hz) for high speed interfacing.
Serial 1	Attitude data	TSS1, Simrad EM3000 and other standard attitude strings.
Serial 2	NMEA position data	GGA position, HDT heading.
Serial 3	RTK / Differential correction input	RS232 (DB9) up to 115k baud

*All performance errors to within 1 sigma

**0.02m performance requires optional L1/L2 upgrade

C-NAV DIFFERENTIAL GPS

C-Nav is a globally corrected differential GPS system owned and operated by C & C Technologies, Inc. The C-Nav GPS Receiver combines a dual-frequency, geodetic grade, GPS Receiver with an integrated L-BAND communication RF detector and decoder all linked by an internal microprocessor. C-Nav uses monitoring stations strategically located around the globe to provide worldwide accuracies in the order of 0.25m (1 sigma)*.



The technique, developed by the Jet Propulsion Lab for the National Aeronautics Space Administration, uses a global network of reference stations to track the entire constellation of GPS satellites. The raw GPS observations are transmitted via the Internet back to the Network Control Center where the GPS constellation satellite orbital corrections and clock-offset values are calculated and modeled in real-time. These corrections are universally valid and can be applied to GPS measurements from any location on earth.

The multi-function antenna assembly is capable of receiving the L1 and L2 GPS frequencies as well as the Inmarsat L-BAND receive frequency band. The gain pattern of this antenna is designed to be relatively constant even at lower elevations. This allows for an efficient link budget when the unit is operated at higher latitudes where the

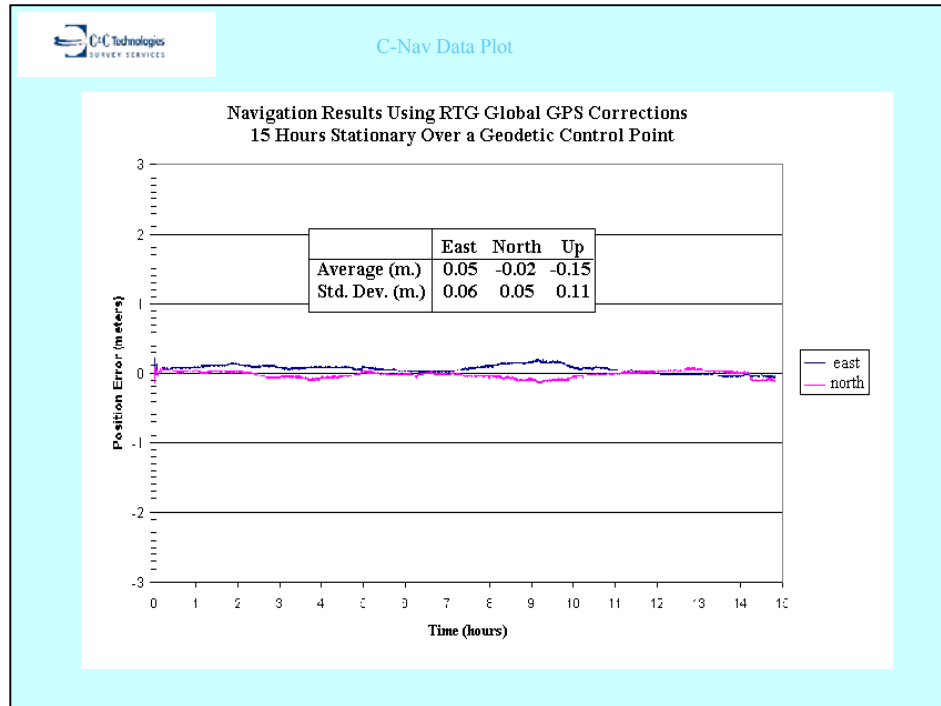
Data Acquisition and Processing Report
OPR-K387-KR



elevation of the geo-stationary communication satellite is low and close to the horizon. Atmospheric delays are eliminated from local measurements by comparing the L1 and L2 frequencies in the internal GPS receiver.

The C-Nav GPS System provides an output of RTCM (Type 1) pseudorange differential correction messages via a second RS232 interface. Raw GPS observation information can be collected from the C-Nav GPS Receiver system for recording and analysis. The raw GPS observation information can be converted to RINEX ASCII data (observation and navigation) file format as and when required.

The C-Nav GPS Receiver requires at least four (4) usable GPS satellites to compute a three dimensional (3D) solution. The C-Nav GPS Receiver will yield an autonomous horizontal position accuracy of 2 to 5 meters (1 sigma), depending on the GPS satellite geometry configuration and tracking (DOP index values).





Receiver Specifications:

Features

- Real-time sub meter accuracy
- Single integrated package – simple installation
- Rugged, waterproof housing
- Wide-range (10-40VDC) power supply
- RTCM and NMEA {GGA, GSA, RMC, VTG, ZDA) outputs
- Patented multipath mitigation significantly reduces noise
- Geodetic quality dual frequency GPS virtually eliminates ionospheric effects

Performance

- L-band receiver frequency
- Automatically selected 1525 to 1560 MHz
- GcGPS Accuracy:
 - Position (H): <30cm
 - Position (V): <70cm
 - {1-sigma and HDOP ≤ 1 }
 - Velocity <0.02m/s
- Time to first fix: Cold Start: 90 sec(typical)
- Reacquisition
 - Coast for 30 sec with GPS lock <2sec
 - L-band loss with less than 30 sec with GPS lock <30 sec

Physical/Environmental

- Size: 9.2 in (H) x 7.2 in (D) (24.8 x 18.7 cm)
- Weight: 5.5 lbs (2.4 kg)
- Power: Input voltages: 10-40 VDC
 - Consumption: <10W average power
 - 1.2 A max @12 VDC
- I/O Connector 8 pin waterproof connector
- Temperature: Operating: -20°C to +70°C
 - Storage: -40°C to 85°C
- Humidity: 100% non-condensing

Display Unit Specifications:

Features

- 4 x 20 character LCD screen
- 12 key membrane button input pad
- Rugged, stainless steel housing
- Wide-range (20-40VDC) power supply
- RTCM and NMEA and raw data outputs



Physical/Environmental

- Size: 9.6 in (L) x 6.7 in (W) x 3.3 in (H) (24.4 x 17.0 x 3.3 cm)
- Weight: 3.8 lbs (1.75 kg)
- Power: Input voltages: 20-40 VDC
Consumption: <1W average power
100 mA max @28 VDC typical
- I/O Connectors: 3 db-9, 1 cat-5 and 1 8 pin waterproof connector
- Temperature: Operating: -20°C to +70°C
Storage: -40°C to 85°C
- Humidity: 100% non-condensing

Data Acquisition and Processing Report
OPR-K387-KR



APPENDIX C – CALIBRATION RECORDS

Data Acquisition and Processing Report
OPR-K387-KR



LETTER OF APPROVAL

Data Acquisition and Processing Report
F00546

This report is respectfully submitted.

Field operations contributing to the accomplishment of this survey were conducted under my direct supervision with frequent personal checks of progress and adequacy. This report has been closely reviewed and is considered complete and adequate as per the Statement of Work.

Joseph Burke
Chief of Party
C&C Technologies
February 2008