

**Data
Acquisition and Processing
Report**

OPR-M905-NRT3-07

Table of Contents

A. EQUIPMENT	- 3 -
1. Sounding Equipment.....	- 3 -
a. Single-Beam Echosounder (SBES).....	- 3 -
b. Shallow Water Multibeam (SWMB)	- 3 -
c. Side Scan Sonar (SSS)	- 4 -
d. Diver Least-Depth Gauge	- 5 -
2. Positioning and Orientation Equipment.....	- 5 -
a. Trimble DSM212L.....	- 5 -
b. Applanix Position and Orientation System for Marine Vessels (POS MV)	- 5 -
B. DATA PROCESSING AND QUALITY CONTROL	- 6 -
1. SBES and SWMB Data	- 6 -
2. Side Scan Sonar (SSS) Data.....	- 6 -
3. Processing Software.....	- 6 -
4. Data Decimation and Field Sheet Production	- 7 -
C. CORRECTIONS TO ECHO SOUNDINGS	- 7 -
1. Sound Velocity	- 7 -
2. Vessel Offsets, Dynamic Draft, and True Heave Correctors	- 7 -
a. Static Draft	- 7 -
b. Dynamic Draft	- 8 -
c. TPE	- 8 -
d. True Heave.....	- 8 -
3. Tide Correctors.....	- 8 -
D. APPROVAL	- 9 -

Data Acquisition and Processing Report

OPR-M905-NRT3-07

Coos Bay, Oregon

Hydrographic Letter Instructions dated July 24, 2007

Team Leader: Kathryn Simmons

This report includes descriptions of equipment used and methods employed by Navigation Response Team 3 during acquisition and processing of hydrographic survey data. It does not necessarily apply to fast-track data – a separate report will accompany data submitted directly to the Marine Chart Division.

A. EQUIPMENT

NOAA Survey Launch S1212 is used to acquire single-beam and multibeam echosounder data, side scan sonar data, and detached positions.

Launch S1212, a 27-foot, SeaArk Commander (SAMA115510000), was acquired in January 2001. In August 2004 the hull was extended to 30 feet to accommodate the weight of the two 150-horsepower Yamaha four-stroke outboards which power the vessel. The launch is eight feet wide, displaces 4.8 tons, has a static draft of 0.4 meters and is equipped with a Dell Pentium IV PC which runs the primary acquisition software.

1. Sounding Equipment

a. Single-Beam Echosounder (SBES)

An Odom Echotrac CV vertical beam echosounder (VBES) employing a single-frequency transducer with beam width set at eight degrees is used for single beam data collection. The echosounder, which is operated at 200 kHz, records both analog and digital data which may be acquired in feet or meters. Soundings are acquired in meters with an assumed speed of sound through water of 1500 m/sec. During data collection the echosounder is controlled and the trace is monitored via an Ethernet driver connection to the HYPACK Survey program. The echosounder trace is recorded to .BIN files which are logged automatically alongside HYPACK line files during acquisition. These files are used for reference during digital data processing.

Leadline checks are performed periodically throughout the project to verify fathometer accuracy. A new leadline was fabricated and calibrated on February 23, 2007.

Coastal Oceanographic's HYPACK Max Survey Software is used for vessel navigation and line tracking during hydrographic data acquisition. The HYPACK software is also used to log "raw" VBES data and to record detached positions in the form of .tgt files.

b. Shallow Water Multibeam (SWMB)

In July 2006, installation of a Kongsberg Simrad EM3000 shallow water multibeam (SWMB) echosounder was completed. The system consists of a sonar head and a processing unit. The EM3000 operates at a single-frequency of 300 kHz; it has a maximum ping rate of 40 Hz and 127 beams per ping. Each beam has a fore-aft width of 1.5° and a port-starboard width of 1.5°. Depth range from the sonar

head is 1 to 150+ meters, depth resolution is 1 cm and depth accuracy is 5 cm RMS. Range sampling rate is 14 kHz.

The sonar head is fixed-mounted to the aft hull of the vessel at the keel, directly beneath inertial measurement unit (IMU). The head contains a flat-face transducer (Mills Cross configuration) and transmitter and receiver elements all encased in an acoustically transparent medium. The transmit beam is steerable to compensate for mounting angle and vessel pitch.

Beam forming and bottom detection are performed by the processing unit which controls the sonar head with respect to gain, ping rate and transmit angle. The processing unit also contains the interfaces for all time-critical external sensors such as attitude data, position, and the pulse per second (PPS) signal.

EM3000 controller software, operating on the HYPACK computer and communicating via Ethernet connection, is used to control adjustable parameters such as range scale, power, gain and pulse width. Real time sound velocity measurements are acquired by a Digibar Pro sound velocity probe mounted on the transom and are transmitted by the controller software to the processing unit for initial beamforming and steering.

On September 5, 2006, a patch test was performed with the EM3000 to determine residual biases of the system. The results are included in Appendix V.

To verify proper operation of the MBES, lead line comparison tests are performed periodically.

Coastal Oceanographic's HYPACK Max Survey and Hysweep programs are used for vessel navigation and line tracking, as well as swath and coverage monitoring during SWMB data acquisition. Device parameters are monitored during acquisition with the EM3000 and POS controller software programs operating on the HYPACK computer. MBES data are logged in the HYPACK "raw" format, with files ending in the .HSX extension.

c. Side Scan Sonar (SSS)

The vessel is equipped with a Klein 3000 sonar system. The system includes:

- Dual frequency (100 kHz, 500 kHz) towfish with 300 PSI pressure sensor
- Transceiver Processing Unit (TPU)
- Workstation Display and Control Unit (WDCU)
- Thirty-five meters of Kevlar reinforced tow cable
- SonarPro software and VX Works TPU operating system

The horizontal beam widths for the low and high frequencies are 1° and 2°, respectively; vertical beam width is 40°. Maximum range scale for the Klein 3000 is 150 meters at high frequency, 500 meters at low frequency. Only the high-frequency data are recorded and stored in the data base; the low frequency image is monitored during data collection but not converted separately.

A range scale of 100 meters is maintained except in very deep water, when the scale is increased to 150 meters, or in very shallow water or during development of submerged obstructions, when the scale may be reduced to 75 or 50 meters. The towfish height above the bottom is maintained at 8 to 20 percent of the range scale whenever possible. Exceptions occur in very shallow areas or in areas where rapidly changing terrain raises the risk of hitting the towfish on the bottom.

Side scan sonar lines are spaced according to the range scale appropriate for water depth to assure overlap of at least 25 meters and to assure 200% coverage.

Vessel speed is maintained at or below five knots to ensure that an object one meter square could be detected across the sonar swath. Confidence checks are performed by observing the outer edges of the sonargram while moving alongside pier faces or known submerged targets.

All SSS data collection is controlled with SonarPro software operating in a Microsoft Windows 2000 environment on the WDCU. Signals are sent to the towfish and data is received from the towfish via the TPU. The sonar data are recorded digitally and stored on the WDCU in the Klein SDF format.

Launch S1212 is equipped with a Dynapar cable counter that logs the length of deployed towfish cable to the WDCU via the HYPACK Delph signal. The measurements are made by counting revolutions of the towing block on the J-frame. Before each use, the cable counter is calibrated by adjusting the readout to reflect the measured marking on the towfish cable at the tow point.

A certification test of the system for object detection and positioning will be performed ASAP and the results will be included in Appendix.

d. Diver Least-Depth Gauge

Not applicable

2. Positioning and Orientation Equipment

a. Trimble DSM212L

The launch is equipped with a Trimble DSM212L integrated 12-channel GPS receiver and a dual-channel DGPS beacon receiver. The beacon receiver can simultaneously monitor two independent U.S. Coast Guard (USCG) DGPS beacons. There are three modes: Auto-Range, which locks onto the beacon nearest the vessel; Auto-Power, which locks onto the beacon with the greatest signal strength; and Manual, which allows the user to select the desired beacon. Additionally, the DSM212L can accept differential correctors (RTCM messages) from an external source such as a user-established DGPS reference station.

The following parameters are monitored in real-time through Trimble's TSIP Talker software to ensure position data quality: 1) number of satellites used in the solution, 2) horizontal dilution of precision (HDOP), 3) latency of correctors, and 4) beacon signal strength. The DSM212L is configured to the auto-power mode, to go off-line if the age of DGPS correctors exceeds 20 seconds, and to exclude satellites with an altitude below eight degrees.

The Trimble DSM212L supplies only DGPS correctors to the POS-MV system.

b. Applanix Position and Orientation System for Marine Vessels (POS MV)

The POS MV includes the following components which work together to provide position and attitude information to the data acquisition systems on S1212:

- POS MV rack mount POS Computer System (PCS)
- Inertial Measurement Unit (IMU)
- Two Identical Trimble Zephyr GPS Antennas

The PCS contains the two GPS receivers, primary and secondary, along with interface cards to communicate with and process the IMU and GPS data.

The primary GPS receiver is a 24-channel Trimble BD950 which receives differential (RTCM) correctors through the PCS and provides position and velocity information. The secondary receiver provides the information necessary to compute heading using carrier phase differential measurements between the two receivers. Two Trimble Zephyr antennas, corresponding to the two receiver cards, are mounted 1.90 meters apart atop the launch cabin. The port side antenna is the primary antenna.

The IMU comprises three solid-state linear accelerometers and three solid state gyros which work together with electronics to provide digital measurements of acceleration in three directions and motion measurements around all three axes of the IMU.

The POS MV is operated and monitored with the POS MV Controller software operating on the HYPACK computer and sends position and orientation data through the Simrad EM3000 processing unit to the HYPACK data files.

Tables listing data acquisition hardware and software are included in Appendix I.

B. DATA PROCESSING AND QUALITY CONTROL

1. SBES and SWMB Data

Both SBES and SWMB raw data are converted from HYPACK to the CARIS HDCS format using the CARIS HIPS conversion wizard. Navigation and attitude data are examined using CARIS HIPS attitude and navigation editors. Evident fliers are rejected and the track line between good navigation points is either interpolated or rejected. The digital SBES depths are compared with the trace recorded in the echosounder .Bin files. The digital record is edited when warranted to ensure that peaks of shoals and abrupt changes in slope are properly depicted. SWMB swath data are examined and edited when necessary in Subset Editor and in Swath Editor.

Corrections to soundings (see Section C below) are applied during the final merge process in HIPS.

2. Side Scan Sonar (SSS) Data

Raw SSS data are also converted to the CARIS HDCS format using the CARIS HIPS conversion wizard and then reviewed with the attitude and navigation editors in the same manner as the sounding data. The CARIS Sensor Layout tool is used to examine the values of the active sensors, cleaning where necessary. Towfish navigation is recomputed, bottom tracking (fish height) is corrected if necessary, and the sonargram is slant-range corrected. The sonargram is then examined for significant contacts (shadow height of 1.0 meter or greater). Contacts selected for development are exported to Mapinfo, where the HydroMI program is used to generate HYPACK target and line files. Assurance that adequate side scan coverage has been acquired is achieved through the generation of mosaics in a CARIS field sheet – one mosaic for the first 100% and one for the second 100%.

3. Processing Software

CARIS HIPS and SIPS software is used to convert, edit and analyze all sounding and side scan data and to apply vertical and horizontal correctors,

NOAA's Pydro software supplied by the Hydrographic Systems and Technology Program (HSTP) is used for analyzing sounding data and SSS contacts, for processing and editing detached positions, and for decimating data in the creation of preliminary smooth sheet (PSS) files.

HSTP's HydroMI Mapbasic program is used in combination with MapInfo software for a number of Pre and Post-Survey applications.

HSTP's VelocWin program is used to process sound velocity data obtained with a Seacat SBE-19 CTD, and an Odom Digibar profiler.

4. Data Decimation and Field Sheet Production

SWMB data acquired for H11744 will be compiled into one Field Sheet containing two CARIS BASE surfaces. See Section B4 in the Descriptive Report for this survey.

Data are inserted into a Pydro Preliminary Smooth Sheet (PSS) using the weighted grid generated from the CARIS base surfacel.

Tables listing data processing hardware and software are included in Appendix I.

Data processing flow diagrams are included in Appendix II.

C. CORRECTIONS TO ECHO SOUNDINGS

1. Sound Velocity

The speed of sound through the water is determined by sound velocity casts conducted in accordance with the NOS Hydrographic Surveys Specifications and Deliverables (HSSD) Manual

Corrections for speed of sound through the water column are computed from data obtained with an SBE-19 Seacat CTD. NOAA's VelocWin software is used to process casts and generate sound velocity files for CARIS HIPS. Sound velocity correctors are applied to sounding data in CARIS HIPS using the 'nearest in distance and within time' sound velocity cast.

Calibration reports for the Odom Digibar and SBE-19 Seacat are included in Appendix IV of this report. Dates and locations of the sound velocity casts are included in Separate II of the survey descriptive report.

2. Vessel Offsets, Dynamic Draft, and True Heave Correctors

a. Static Draft

Static draft measurements for the multibeam and single beam transducers were calculated on August 16, 2006 (DN 228) employing the following procedure.

First, the depth of each transducer face from the top of the blue paint line above the respective transducer was measured. Next, with the launch in the water, fuel tanks half full and two persons aboard, the distance from this reference mark to the waterline was measured. By subtracting the second measurement from the first a static draft of 0.5 meters was calculated for the SWMB transducer and 0.3 meters for the single beam transducer.

b. Dynamic Draft

Dynamic draft measurements were calculated on August 16, 2006 (DN 228), using the single beam echosounder and the method described in FPM 1.4.2.1. Data for the measurements were acquired over a region selected for minimum cross-track error.

Offsets measured from the reference point to the transducer, sensors and antenna were, together with static and dynamic draft correctors, incorporated into the 'vessel config' files and applied during the merge process in CARIS. Offset diagrams and CARIS vessel config files are included in Appendix III.

c. TPE

Measured sound speed TPE for H11744 was entered in CARIS as 4 m/s. This number is based on frequency of casts (one cast every four hours) acquired during data acquisition. Surface sound speed values were entered in CARIS as 0.2 m/s. Tide zoning uncertainty values were provided by CO-OPS in the project instructions and divided by 2 to approximate the required 1 sigma error level.

d. True Heave

During data collection, true heave corrections were logged through the POS MV Controller to a separate data file and applied to the hydro data during post-processing.

3. Tide Correctors

The operating National Water Level Observation Network (NWLON) station at Charleston, OR (943-2780) served as datum control for the survey area.

Verified, six-minute water levels relative to Mean Lower Low Water were downloaded from the NOAA, NOS, Center for Operational Oceanographic Products and Services (CO-OPS) web site: (<http://tidesandcurrents.noaa.gov/olddata>). These were imported into a text file on a local computer and appended to the CARIS tide file, 9432780.tid.

There are eleven tide zones within the project limits. Time and range correctors, referenced to the tide station at Charleston, OR, are provided in the zoning file *S-M905NRT32007CORP.zdf* which is included with the project data.

Using the CARIS HIPS Load Tide process, soundings are sorted into the appropriate tide zone; time and range adjustments are computed and applied to the verified tides in each zone.

All correctors are finally applied to the data using the CARIS "Merge" utility. The corrected depths are then used by Pydro for the generation of preliminary smooth sheets (PSS).

D. APPROVAL

As Chief of Party, I have ensured that standard field surveying and processing procedures were used during this project in accordance with the Hydrographic Manual, Fourth Edition; Hydrographic Survey Guidelines; Field Procedures Manual, and the NOS Hydrographic Surveys Specifications and Deliverables Manual, as updated for 2004.

I acknowledge that all of the information contained in this report is complete and accurate to the best of my knowledge.

A handwritten signature in cursive script, reading "Kathryn Simmons". The signature is written in black ink and is positioned above a horizontal line.

Approved and Forwarded:

Kathryn Simmons
Navigation Response Team 3

OPR-M905-NRT3-07
Data Acquisition and Processing Report

APPENDICES

APPENDIX I
Software Versions and Hardware Serial Numbers

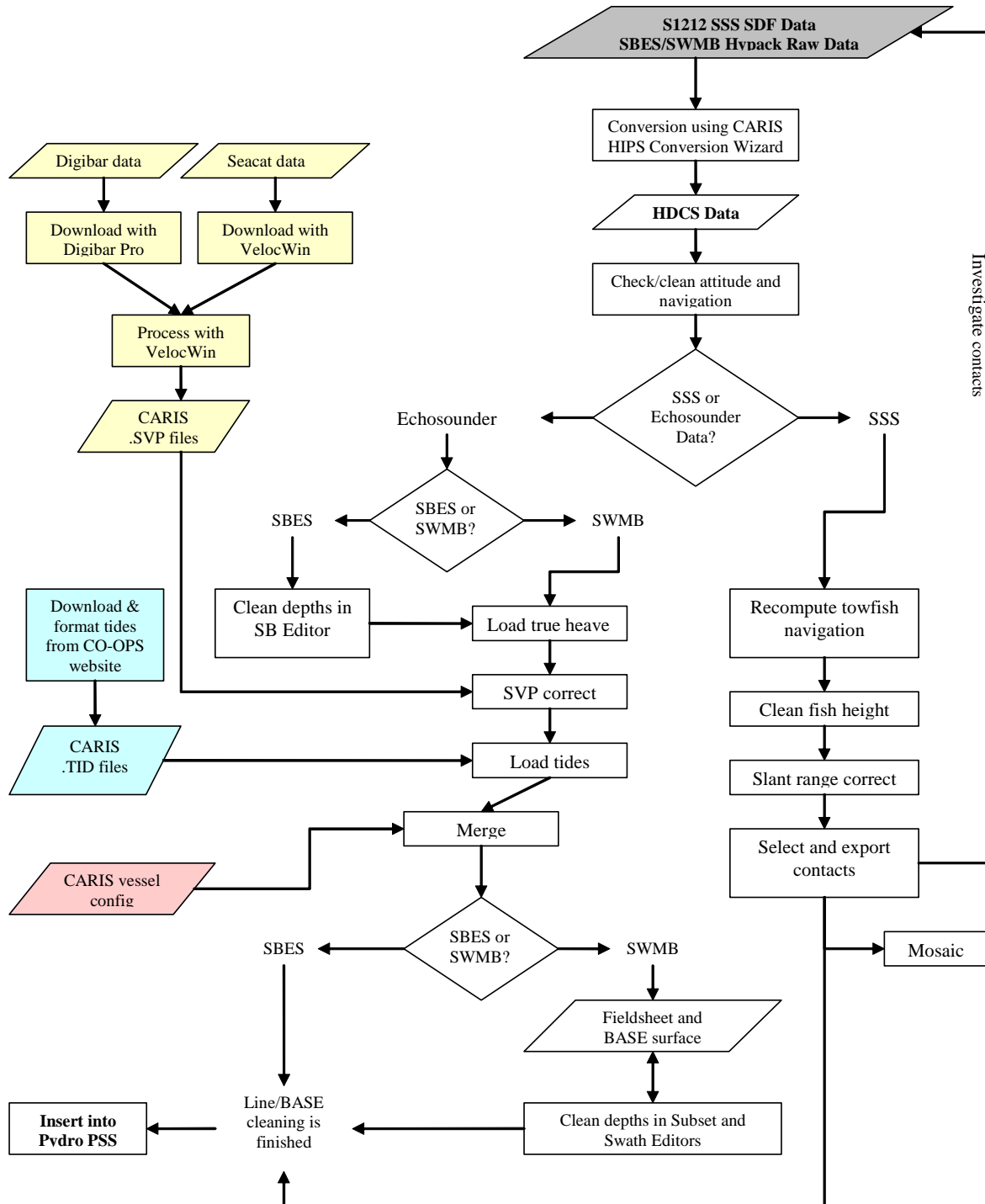
In-service date	Software	Version
	Acquisition	
08/01/2006	<u>Hypack Max</u>	6.22
07/14/2005	Klein 3000 Sonar Pro	9.6
08/01/2006	TSIP Talker	2.0
08/01/2006	POS MV Controller	3.3.0.1
08/01/2006	EM3000 Controller	1.0.91
08/01/2006	Echotrac Control Software	3.08
	Processing	
12/12/2006		6.10.1
01/29/2007	Pydro	7.1.0
05/07/2007		7.3.0
08/01/2006	KapConv	5.7.3
08/01/2006		8.5
09/24/2007	MapInfo	9.0
10/24/2006		6.8.1
01/29/2007	HydroMI	6.10.2
08/01/2006	Vertical Mapper	2.0
07/16/2007	Caris HIPS/SIPS	6.1 SP1
03/03/2004	CARIS GIS	4.4a
07/19/2007	Nobeltec Tides & Currents	3.5.107
	Sound Velocity	
08/01/2006		8.80
01/29/2007	VelocWin	8.83
03/31/2005	Digibar Pro Log	2.3

In-service date	Equipment	Serial Number
Survey Launch 1212		
03/03/2004	Klein 3000 Dual Frequency Towfish (Model 3210)	456
03/03/2004	Klein 3000 TPU	312
03/03/2004	Klein 3000 Workstation	22-291
03/07/2005 to 03/03/2006	Hypack Computer (Dell Pentium IV)	N/A
03/03/2004	Trimble DSM212L	0220164491
03/03/2004	Trimble Antenna	0220330095
03/03/2004	Dynapar Max Count Cable Counter	N/A
03/05/2006	SBE 19 Seacat	1913768-2039
03/31/2005	Odom Digibar Pro DB-200 Controller	98308
08/13/2007 to 08/14/2007	Odom Digibar Pro DB-200 Controller	98314
08/01/2006	Odom Digibar Pro DB-200 Probe	98314
05/18/2007 to 08/01/2007	Odom Digibar Pro DB-200 Probe	98206
10/24/2005	Odom ETCVX2 (Echotrac CV)	23015
08/01/2006	POS MV Controller	2245
08/01/2006	POS MV IMU	Unknown
08/01/2006	Trimble Zephyr Antennas	Port 60080830 Stbd 60069001
08/01/2006	Simrad EM 3000 Multibeam Sonar	358
08/01/2006	Simrad EM 3000 Controller	1534 Dongle 040131
08/01/2006	New Hypack Computer from PHB	B7F8M41
09/05/2006	SBE 19 Seacat #2	1913768-2039
10/10/2006	SBE 19 Plus Seacat	19P44126-4778
NRT3 Office		
08/01/2006	NRT3-1 Data Processing CPU	9VQLKB1
08/01/2006	NRT3-2 Data Processing CPU	BVQLKB1
08/01/2006	NRT3-3 Data Processing CPU	H5TYT61
Trimble Backpack Units		
07/26/2006	Pro XRS 12 Channel DGPS Receiver #1	SN 0224062536 / PN 33302-51
07/26/2006	Combined L1 GPS/Beacon/Satellite Differential Antenna #1	SN 0220284591 / PN 33580-50
07/26/2006	Trimble TSC1 Datalogger #1	SN 0220262979 / PN 29673-50
07/26/2006	Pro XRS 12 Channel DGPS Receiver #2	SN 0224024875 / PN 33302-51
07/26/2006	Combined L1 GPS/Beacon/Satellite Differential Antenna #2	SN 0220257168 / PN 33580-50
07/26/2006	Trimble TSC1 Datalogger #2	SN 0220276706 / PN 29673-50
07/26/2006	GeoXT 12 Channel GPS Receiver/Handheld	SN 4428E01847 / PN 50950-20
07/26/2006	Beacon-on-a-Belt Differential Receiver/Antenna	SN 0440111069 / PN 38508-00

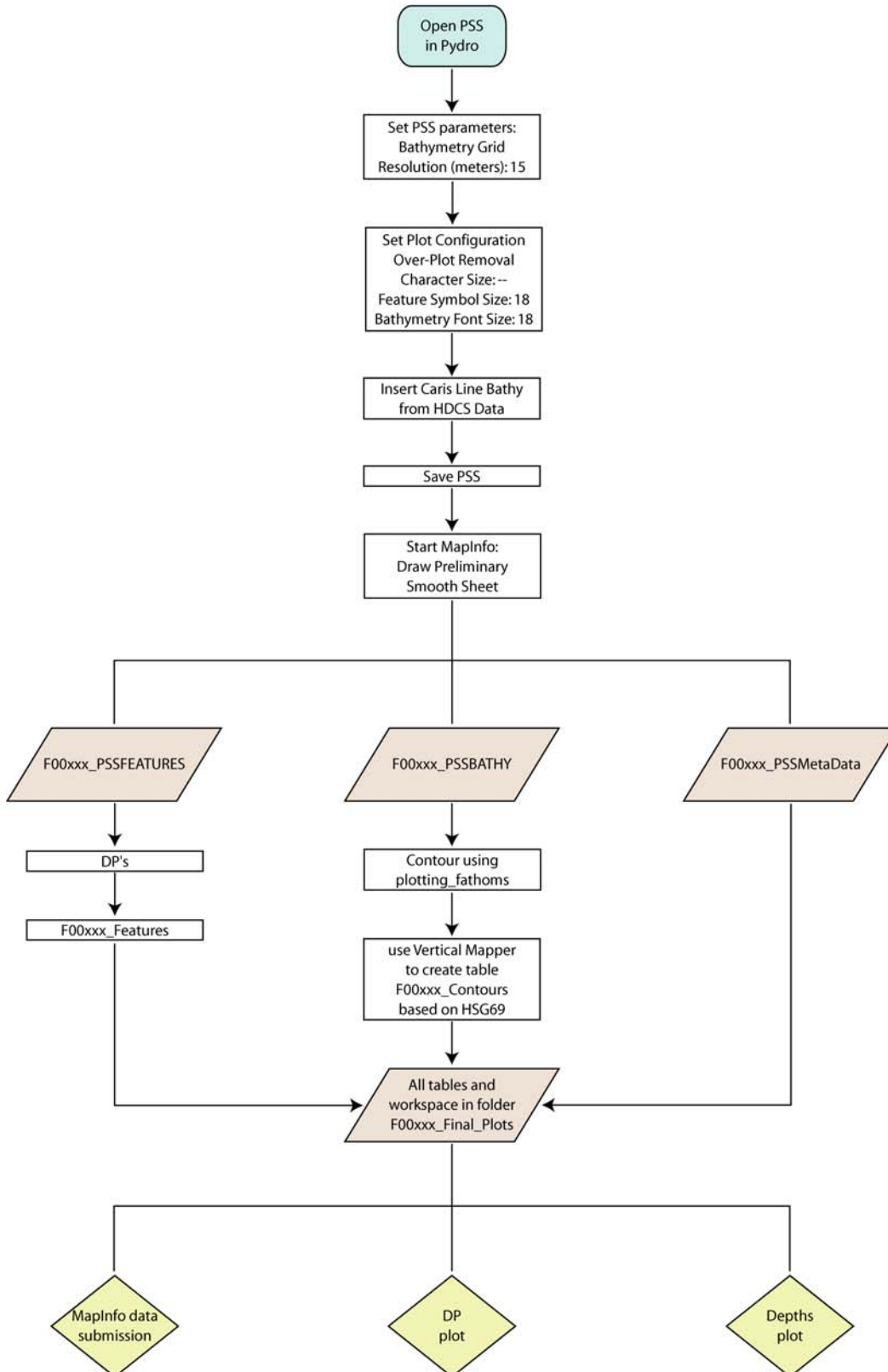
APPENDIX II

Processing Flow Diagrams

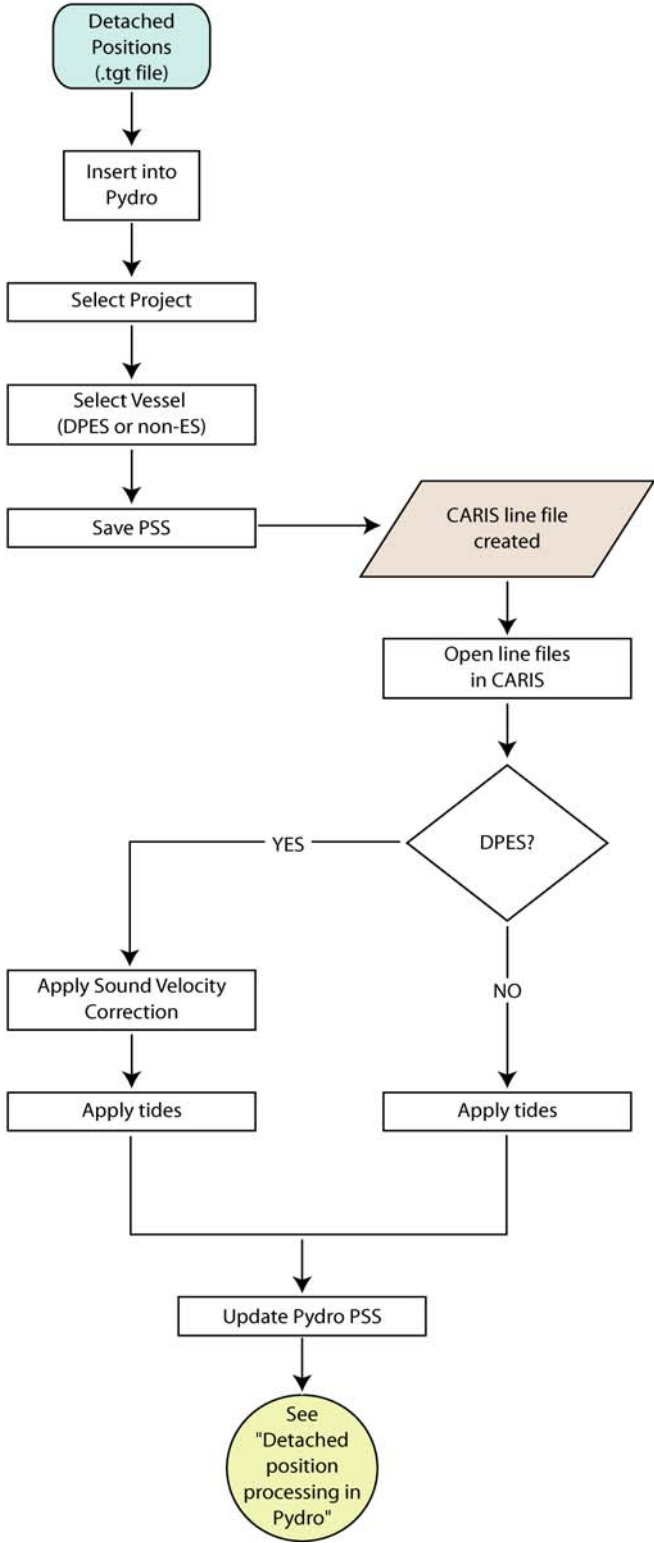
Raw SSS/Hypack Data to Pydro



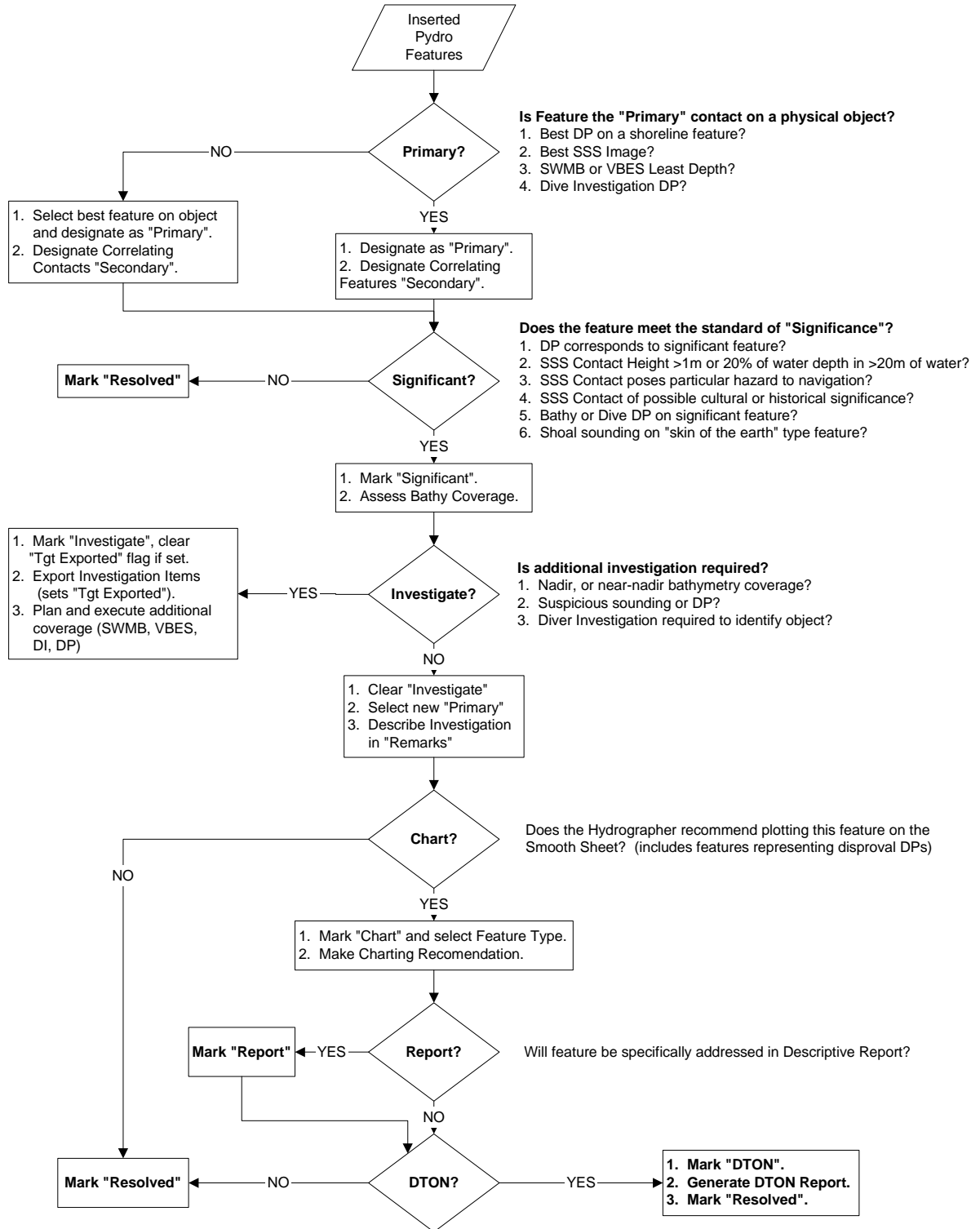
Caris Data to MapInfo Plot



Detached Position Processing

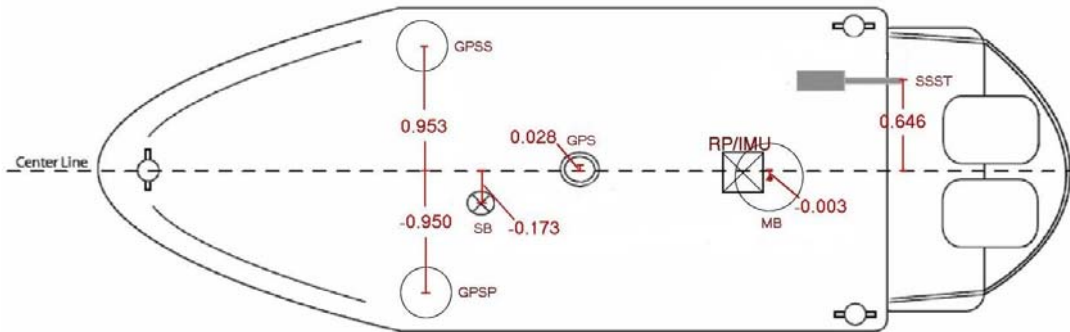


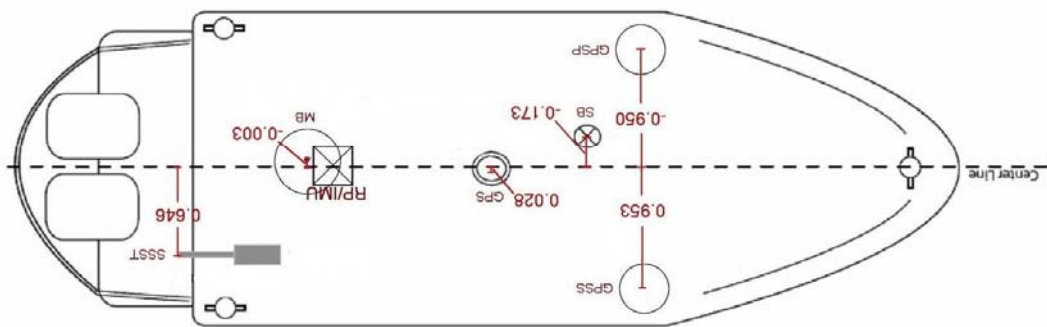
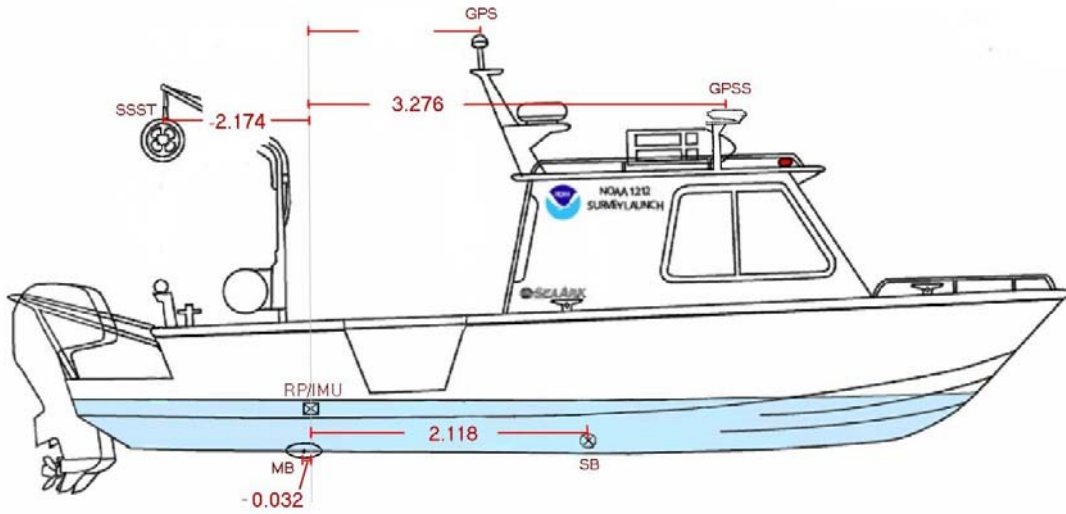
Detached Position processing in Pydro



APPENDIX III

Vessel Offsets





CARIS HIPS Vessel Configuration Files

S1212 SBES HIPS Vessel File

Vessel Name: 1212sb.hvf

Vessel created: August 22, 2006

Depth Sensor:

Sensor Class: Swath
Time Stamp: 2004-274 00:00

Transducer #1:

Pitch Offset: 0.000
Roll Offset: 0.000
Azimuth Offset: 0.000

DeltaX: 0.000
DeltaY: 0.000
DeltaZ: 0.000

Manufacturer:
Model: Unknown
Serial Number:

Depth Sensor:

Sensor Class: Swath
Time Stamp: 2006-228 00:00

Transducer #1:

Pitch Offset: 0.000
Roll Offset: 0.000
Azimuth Offset: 0.000

DeltaX: -0.173
DeltaY: 2.118
DeltaZ: 0.419

Manufacturer: Odom
Model: Unknown
Serial Number: Echotrac CV--23015

Navigation Sensor:

Time Stamp: 2004-274 00:00

Comments

Latency 0.000

DeltaX: 0.170

DeltaY: -0.720

DeltaZ: -3.940

Manufacturer:

Model:

Serial Number:

Time Stamp: 2006-103 00:00

Comments

Latency 0.000

DeltaX: 0.170

DeltaY: -0.720

DeltaZ: -3.940

Manufacturer:

Model:

Serial Number:

Time Stamp: 2006-228 00:00

Comments RP to IMU

Latency 0.000

DeltaX: 0.000

DeltaY: 0.000

DeltaZ: 0.000

Manufacturer: Trimble/Applanix

Model: Zephyr/POSMV4

Serial Number:

Gyro Sensor:

Time Stamp: 2004-274 00:00

Comments

Latency 0.000

Time Stamp: 2006-228 00:00

Comments

Latency 0.000

Heave Sensor:

Time Stamp: 2006-228 00:00

Comments

Apply Yes

Latency 0.000

DeltaX: 0.000

DeltaY: 0.000

DeltaZ: 0.000

Manufacturer: Applanix

Model: POSMV4

Serial Number:

Pitch Sensor:

Time Stamp: 2006-228 00:00

Comments

Apply Yes

Latency 0.000

Pitch offset: 0.000

Manufacturer: Applanix

Model: POSMV4

Serial Number:

Roll Sensor:

Time Stamp: 2006-228 00:00

Comments

Apply Yes

Latency 0.000

Roll offset: 0.000

Manufacturer: Applanix

Model: POSMV4

Serial Number:

Draft Sensor:

Time Stamp: 2004-274 00:00

Apply Yes

Comments

Entry 1) Draft: 0.000 Speed: 3.100

Entry 2) Draft: 0.045	Speed: 4.900
Entry 3) Draft: 0.099	Speed: 5.500
Entry 4) Draft: 0.149	Speed: 6.300
Entry 5) Draft: 0.128	Speed: 7.000
Entry 6) Draft: 0.117	Speed: 7.600
Entry 7) Draft: 0.098	Speed: 8.100
Entry 8) Draft: 0.091	Speed: 8.300
Entry 9) Draft: 0.079	Speed: 8.700
Entry 10) Draft: 0.043	Speed: 9.400
Entry 11) Draft: 0.029	Speed: 10.100
Entry 12) Draft: 0.025	Speed: 10.800
Entry 13) Draft: -0.023	Speed: 11.800
Entry 14) Draft: -0.063	Speed: 12.900
Entry 15) Draft: -0.058	Speed: 13.800
Entry 16) Draft: -0.073	Speed: 15.000
Entry 17) Draft: -0.044	Speed: 15.800

Time Stamp: 2006-228 00:00

Apply Yes

Comments

Entry 1) Draft: 0.000	Speed: 4.599
Entry 2) Draft: -0.003	Speed: 5.171
Entry 3) Draft: 0.029	Speed: 5.853
Entry 4) Draft: 0.028	Speed: 6.685
Entry 5) Draft: 0.044	Speed: 7.361
Entry 6) Draft: 0.014	Speed: 8.013
Entry 7) Draft: 0.032	Speed: 8.421
Entry 8) Draft: -0.013	Speed: 9.251
Entry 9) Draft: -0.064	Speed: 10.503
Entry 10) Draft: -0.048	Speed: 11.848
Entry 11) Draft: -0.140	Speed: 14.153

Svp Sensor:

Time Stamp: 2004-274 00:00

Comments

Svp #1:

Pitch Offset:	0.000
Roll Offset:	0.000
Azimuth Offset:	0.000

DeltaX:	0.000
DeltaY:	0.000
DeltaZ:	0.000

SVP #2:

Pitch Offset:	0.000
---------------	-------

Roll Offset: 0.000
Azimuth Offset: 0.000

DeltaX: 0.000
DeltaY: 0.000
DeltaZ: 0.000

Time Stamp: 2006-228 00:00

Comments

Svp #1:

Pitch Offset: 0.000
Roll Offset: 0.000
Azimuth Offset: 0.000

DeltaX: -0.173
DeltaY: 2.118
DeltaZ: 0.419

SVP #2:

Pitch Offset: 0.000
Roll Offset: 0.000
Azimuth Offset: 0.000

DeltaX: 0.000
DeltaY: 0.000
DeltaZ: 0.000

WaterLine:

Time Stamp: 2004-274 00:00

Comments

Apply Yes
WaterLine -0.400

Time Stamp: 2006-228 00:00

Comments RP to "mean water level" as surveyed

Apply Yes
WaterLine 0.022

S1212 SSS HIPS Vessel File

Vessel Name: 1212sss_100.hvf

Vessel created: August 22, 2006

Depth Sensor:

Sensor Class: Swath
Time Stamp: 2004-274 00:00

Transducer #1:

Pitch Offset: 0.000
Roll Offset: 0.000
Azimuth Offset: 0.000

DeltaX: 0.000
DeltaY: 0.000
DeltaZ: 0.000

Manufacturer:
Model: Unknown
Serial Number:

Depth Sensor:

Sensor Class: Swath
Time Stamp: 2006-228 00:00

Transducer #1:

Pitch Offset: 0.000
Roll Offset: 0.000
Azimuth Offset: 0.000

DeltaX: -0.173
DeltaY: 2.118
DeltaZ: 0.419

Manufacturer: Odom
Model: Unknown
Serial Number: Echotrac CV--23015

Navigation Sensor:

Time Stamp: 2004-274 00:00

Comments

Latency 0.000
DeltaX: 0.170
DeltaY: -0.720
DeltaZ: -3.940

Manufacturer:
Model:
Serial Number:

Time Stamp: 2006-103 00:00

Comments
Latency 0.000
DeltaX: 0.170
DeltaY: -0.720
DeltaZ: -3.940

Manufacturer:
Model:
Serial Number:

Time Stamp: 2006-228 00:00

Comments RP to IMU
Latency 0.000
DeltaX: 0.000
DeltaY: 0.000
DeltaZ: 0.000

Manufacturer: Trimble/Applanix
Model: Zephyr/POSMV4
Serial Number:

Gyro Sensor:

Time Stamp: 2004-274 00:00

Comments
Latency 0.000

Time Stamp: 2006-228 00:00

Comments
Latency 0.000

Heave Sensor:

Time Stamp: 2006-228 00:00

Comments

Apply Yes

Latency 0.000

DeltaX: 0.000

DeltaY: 0.000

DeltaZ: 0.000

Manufacturer: Applanix

Model: POSMV4

Serial Number:

Pitch Sensor:

Time Stamp: 2006-228 00:00

Comments

Apply Yes

Latency 0.000

Pitch offset: 0.000

Manufacturer: Applanix

Model: POSMV4

Serial Number:

Roll Sensor:

Time Stamp: 2006-228 00:00

Comments

Apply Yes

Latency 0.000

Roll offset: 0.000

Manufacturer: Applanix

Model: POSMV4

Serial Number:

Draft Sensor:

Time Stamp: 2004-274 00:00

Apply Yes

Comments

Entry 1) Draft: 0.000 Speed: 3.100

Entry 2) Draft: 0.045 Speed: 4.900

Entry 3) Draft: 0.099	Speed: 5.500
Entry 4) Draft: 0.149	Speed: 6.300
Entry 5) Draft: 0.128	Speed: 7.000
Entry 6) Draft: 0.117	Speed: 7.600
Entry 7) Draft: 0.098	Speed: 8.100
Entry 8) Draft: 0.091	Speed: 8.300
Entry 9) Draft: 0.079	Speed: 8.700
Entry 10) Draft: 0.043	Speed: 9.400
Entry 11) Draft: 0.029	Speed: 10.100
Entry 12) Draft: 0.025	Speed: 10.800
Entry 13) Draft: -0.023	Speed: 11.800
Entry 14) Draft: -0.063	Speed: 12.900
Entry 15) Draft: -0.058	Speed: 13.800
Entry 16) Draft: -0.073	Speed: 15.000
Entry 17) Draft: -0.044	Speed: 15.800

Time Stamp: 2006-228 00:00

Apply Yes

Comments

Entry 1) Draft: 0.000	Speed: 4.599
Entry 2) Draft: -0.003	Speed: 5.171
Entry 3) Draft: 0.029	Speed: 5.853
Entry 4) Draft: 0.028	Speed: 6.685
Entry 5) Draft: 0.044	Speed: 7.361
Entry 6) Draft: 0.014	Speed: 8.013
Entry 7) Draft: 0.032	Speed: 8.421
Entry 8) Draft: -0.013	Speed: 9.251
Entry 9) Draft: -0.064	Speed: 10.503
Entry 10) Draft: -0.048	Speed: 11.848
Entry 11) Draft: -0.140	Speed: 14.153

Tow Point:

Time Stamp: 2004-274 00:00

Comments

Latency 0.000

DeltaX: 0.760

DeltaY: -4.200

DeltaZ: -2.800

Manufacturer:

Model:

Serial Number:

Time Stamp: 2006-228 00:00

Comments

Latency 0.000

DeltaX: 0.646
DeltaY: -2.174
DeltaZ: -2.567

Manufacturer:
Model:
Serial Number:

Svp Sensor:

Time Stamp: 2004-274 00:00

Comments

Svp #1:

Pitch Offset: 0.000
Roll Offset: 0.000
Azimuth Offset: 0.000

DeltaX: 0.000
DeltaY: 0.000
DeltaZ: 0.000

SVP #2:

Pitch Offset: 0.000
Roll Offset: 0.000
Azimuth Offset: 0.000

DeltaX: 0.000
DeltaY: 0.000
DeltaZ: 0.000

Time Stamp: 2006-228 00:00

Comments

Svp #1:

Pitch Offset: 0.000
Roll Offset: 0.000
Azimuth Offset: 0.000

DeltaX: -0.173
DeltaY: 2.118
DeltaZ: 0.419

SVP #2:

Pitch Offset: 0.000
Roll Offset: 0.000

Azimuth Offset: 0.000

DeltaX: 0.000

DeltaY: 0.000

DeltaZ: 0.000

WaterLine:

Time Stamp: 2004-274 00:00

Comments

Apply Yes

WaterLine -0.400

Time Stamp: 2006-228 00:00

Comments RP to "mean water level" as surveyed

Apply Yes

WaterLine 0.022

S1212 SWMB HIPS Vessel File

Vessel Name: S1212_Simrad.hvf

Vessel created: September 05, 2006

Depth Sensor:

Sensor Class: Swath
Time Stamp: 2006-234 00:00

Transducer #1:

Pitch Offset: 0.000
Roll Offset: -0.060
Azimuth Offset: 0.000

DeltaX: -0.003
DeltaY: -0.032
DeltaZ: 0.631

Manufacturer: Kongsberg
Model: em3000
Serial Number:

Navigation Sensor:

Time Stamp: 2006-234 00:00

Comments RP to IMU

Latency 0.000
DeltaX: 0.000
DeltaY: 0.000
DeltaZ: 0.000

Manufacturer: Applanix
Model: POS/MV4
Serial Number: (null)

Gyro Sensor:

Time Stamp: 2006-234 00:00

Comments (null)
Latency 0.000

Heave Sensor:

Time Stamp: 2006-234 00:00

Comments (null)

Apply Yes

Latency 0.000

DeltaX: 0.000

DeltaY: 0.000

DeltaZ: 0.000

Manufacturer: Applanix

Model: POS/MV4

Serial Number: (null)

Pitch Sensor:

Time Stamp: 2006-234 00:00

Comments (null)

Apply Yes

Latency 0.000

Pitch offset: 0.000

Manufacturer: Applanix

Model: POS/MV4

Serial Number: (null)

Roll Sensor:

Time Stamp: 2006-234 00:00

Comments (null)

Apply Yes

Latency 0.000

Roll offset: 0.000

Manufacturer: Applanix

Model: POS/MV4

Serial Number: (null)

Draft Sensor:

Time Stamp: 2006-234 00:00

Apply Yes

Comments (null)

Entry 1) Draft: 0.000 Speed: 4.599

Entry 2) Draft: -0.003 Speed: 5.171

Entry 3) Draft: 0.029 Speed: 5.853

Entry 4) Draft: 0.028	Speed: 6.685
Entry 5) Draft: 0.044	Speed: 7.361
Entry 6) Draft: 0.014	Speed: 8.013
Entry 7) Draft: 0.032	Speed: 8.421
Entry 8) Draft: -0.013	Speed: 9.251
Entry 9) Draft: -0.064	Speed: 10.503
Entry 10) Draft: -0.048	Speed: 11.848
Entry 11) Draft: -0.140	Speed: 14.153

TPE

Time Stamp: 2006-234 00:00

Comments

Offsets

Motion sensing unit to the transducer 1

X Head 1 -0.003

Y Head 1 -0.032

Z Head 1 0.631

Motion sensing unit to the transducer 2

X Head 2 0.000

Y Head 2 0.000

Z Head 2 0.000

Navigation antenna to the transducer 1

X Head 1 -0.947

Y Head 1 3.288

Z Head 1 3.376

Navigation antenna to the transducer 2

X Head 2 0.000

Y Head 2 0.000

Z Head 2 0.000

Roll offset of transducer number 1 0.000

Roll offset of transducer number 2 0.000

Heave Error: 0.050 or 5.000" of heave amplitude.

Measurement errors: 0.020

Motion sensing unit alignment errors

Gyro:1.000 Pitch:1.000 Roll:1.000

Gyro measurement error: 0.020

Roll measurement error: 0.020

Pitch measurement error: 0.020

Navigation measurement error: 0.700

Transducer timing error: 0.010

Navigation timing error: 0.001

Gyro timing error: 0.001

Heave timing error: 0.001

PitchTimingStdDev: 0.001

Roll timing error: 0.001

Sound Velocity speed measurement error: 0.000

Surface sound speed measurement error: 0.000
Tide measurement error: 0.000
Tide zoning error: 0.000
Speed over ground measurement error: 0.030
Dynamic loading measurement error: 0.030
Static draft measurement error: 0.050
Delta draft measurement error: 0.010

Svp Sensor:

Time Stamp: 2006-234 00:00

Comments

Svp #1:

Pitch Offset: 0.000

Roll Offset: 0.000

Azimuth Offset: 0.000

DeltaX: -0.003

DeltaY: -0.032

DeltaZ: 0.631

SVP #2:

Pitch Offset: 0.000

Roll Offset: 0.000

Azimuth Offset: 0.000

DeltaX: 0.000

DeltaY: 0.000

DeltaZ: 0.000

Time Stamp: 2006-248 00:00

Comments

Svp #1:

Pitch Offset: 0.000

Roll Offset: 0.000

Azimuth Offset: 0.000

DeltaX: -0.003

DeltaY: -0.032

DeltaZ: 0.631

SVP #2:

Pitch Offset: 0.000

Roll Offset: 0.000

Azimuth Offset: 0.000

DeltaX: 0.000

DeltaY: 0.000

DeltaZ: 0.000

S1212 Non-Echosounder DP HIPS Vessel File

Vessel Name: 1212DPnonES.hvf

Vessel created: August 22, 2006

Depth Sensor:

Sensor Class: Swath
Time Stamp: 2004-274 00:00

Transducer #1:

Pitch Offset: 0.000
Roll Offset: 0.000
Azimuth Offset: 0.000

DeltaX: 0.000
DeltaY: 0.000
DeltaZ: 0.000

Manufacturer:
Model: Unknown
Serial Number:

Depth Sensor:

Sensor Class: Swath
Time Stamp: 2006-228 00:00

Transducer #1:

Pitch Offset: 0.000
Roll Offset: 0.000
Azimuth Offset: 0.000

DeltaX: -0.173
DeltaY: 2.118
DeltaZ: 0.419

Manufacturer: Odom
Model: Unknown
Serial Number: Echotrac CV--23015

Navigation Sensor:

Time Stamp: 2004-274 00:00

Comments
Latency 0.000

DeltaX: 0.170
DeltaY: -0.720
DeltaZ: -3.940

Manufacturer:
Model:
Serial Number:

Time Stamp: 2006-103 00:00

Comments
Latency 0.000
DeltaX: 0.170
DeltaY: -0.720
DeltaZ: -3.940

Manufacturer:
Model:
Serial Number:

Time Stamp: 2006-228 00:00

Comments RP to IMU
Latency 0.000
DeltaX: 0.000
DeltaY: 0.000
DeltaZ: 0.000

Manufacturer: Trimble/Applanix
Model: Zephyr/POSMV4
Serial Number:

Gyro Sensor:

Time Stamp: 2004-274 00:00

Comments
Latency 0.000

Time Stamp: 2006-228 00:00

Comments
Latency 0.000

Heave Sensor:

Time Stamp: 2006-228 00:00

Comments

Apply Yes
Latency 0.000
DeltaX: 0.000
DeltaY: 0.000
DeltaZ: 0.000

Manufacturer: Applanix
Model: POSMV4
Serial Number:

Pitch Sensor:

Time Stamp: 2006-228 00:00

Comments
Apply Yes
Latency 0.000
Pitch offset: 0.000

Manufacturer: Applanix
Model: POSMV4
Serial Number:

Roll Sensor:

Time Stamp: 2006-228 00:00

Comments
Apply Yes
Latency 0.000
Roll offset: 0.000

Manufacturer: Applanix
Model: POSMV4
Serial Number:

Draft Sensor:

Time Stamp: 2004-274 00:00

Apply Yes
Comments

Entry 1) Draft: 0.000	Speed: 3.100
Entry 2) Draft: 0.045	Speed: 4.900
Entry 3) Draft: 0.099	Speed: 5.500

Entry 4) Draft: 0.149	Speed: 6.300
Entry 5) Draft: 0.128	Speed: 7.000
Entry 6) Draft: 0.117	Speed: 7.600
Entry 7) Draft: 0.098	Speed: 8.100
Entry 8) Draft: 0.091	Speed: 8.300
Entry 9) Draft: 0.079	Speed: 8.700
Entry 10) Draft: 0.043	Speed: 9.400
Entry 11) Draft: 0.029	Speed: 10.100
Entry 12) Draft: 0.025	Speed: 10.800
Entry 13) Draft: -0.023	Speed: 11.800
Entry 14) Draft: -0.063	Speed: 12.900
Entry 15) Draft: -0.058	Speed: 13.800
Entry 16) Draft: -0.073	Speed: 15.000
Entry 17) Draft: -0.044	Speed: 15.800

Time Stamp: 2006-228 00:00

Apply No

Comments

Entry 1) Draft: 0.000	Speed: 4.599
Entry 2) Draft: -0.003	Speed: 5.171
Entry 3) Draft: 0.029	Speed: 5.853
Entry 4) Draft: 0.028	Speed: 6.685
Entry 5) Draft: 0.044	Speed: 7.361
Entry 6) Draft: 0.014	Speed: 8.013
Entry 7) Draft: 0.032	Speed: 8.421
Entry 8) Draft: -0.013	Speed: 9.251
Entry 9) Draft: -0.064	Speed: 10.503
Entry 10) Draft: -0.048	Speed: 11.848
Entry 11) Draft: -0.140	Speed: 14.153

Svp Sensor:

Time Stamp: 2004-274 00:00

Comments

Svp #1:

Pitch Offset:	0.000
Roll Offset:	0.000
Azimuth Offset:	0.000

DeltaX: 0.000

DeltaY: 0.000

DeltaZ: 0.000

SVP #2:

Pitch Offset:	0.000
Roll Offset:	0.000
Azimuth Offset:	0.000

DeltaX: 0.000
DeltaY: 0.000
DeltaZ: 0.000

Time Stamp: 2006-228 00:00

Comments

Svp #1:

Pitch Offset: 0.000
Roll Offset: 0.000
Azimuth Offset: 0.000

DeltaX: -0.173
DeltaY: 2.118
DeltaZ: 0.419

SVP #2:

Pitch Offset: 0.000
Roll Offset: 0.000
Azimuth Offset: 0.000

DeltaX: 0.000
DeltaY: 0.000
DeltaZ: 0.000

WaterLine:

Time Stamp: 2004-274 00:00

Comments

Apply Yes

WaterLine -0.400

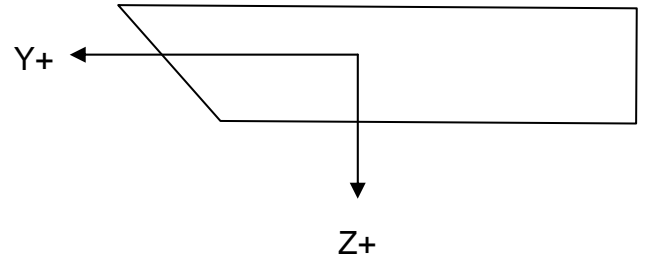
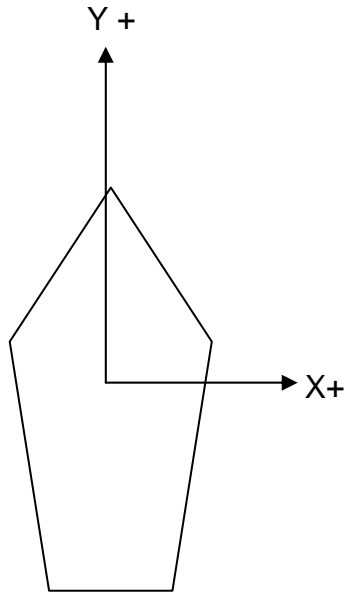
Time Stamp: 2006-228 00:00

Comments RP to "mean water level" as surveyed

Apply No

WaterLine 0.022

CARIS Offset Sign Conventions



APPENDIX IV

Calibration Reports



Sea-Bird Electronics, Inc.

1808 136th Place NE, Bellevue, Washington 98005 USA
Website: <http://www.seabird.com>

FAX: (425) 643-9954

Tel: (425) 643-9866
Email: seabird@seabird.com

Service Report

SBE Job Number: 42655

Date: 19 April 2006

Customer: Atlantic Marine Center

Customer Identified Problem:

1. Calibrate SBE 19 SEACAT Profiler, S/N 1913768-2039.

Services Performed:

1. Calibrations and services performed on SBE 19 SEACAT Profiler, S/N 1913768-2039.
Post calibrated the temperature and conductivity sensors.
Calibrated the pressure sensor.
Performed full diagnostic evaluation.

SEA-BIRD ELECTRONICS, INC.

1808 136th Place N.E., Bellevue, Washington, 98005 USA
 Phone: (425) 643 - 9866 Fax (425) 643 - 9954 Email: seabird@seabird.com

SENSOR SERIAL NUMBER: 2039
 CALIBRATION DATE: 07-Apr-06

SBE19 TEMPERATURE CALIBRATION DATA
 ITS-90 TEMPERATURE SCALE

ITS-90 COEFFICIENTS

g = 4.17041229e-003
 h = 5.93627062e-004
 i = 2.55696272e-006
 j = -2.19779670e-006
 f0 = 1000.0

ITS-68 COEFFICIENTS

a = 3.64763453e-003
 b = 5.84049201e-004
 c = 8.42718145e-006
 d = -2.19746316e-006
 f0 = 2426.891

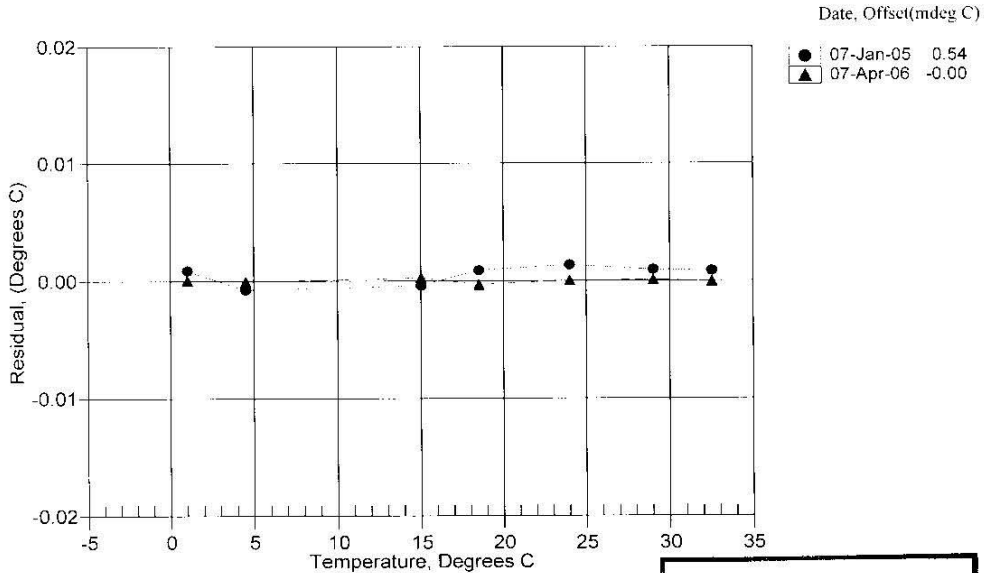
BATH TEMP (ITS-90)	INSTRUMENT FREQ (Hz)	INST TEMP (ITS-90)	RESIDUAL (ITS-90)
1.0000	2426.891	1.0000	0.00003
4.4999	2625.956	4.4998	-0.00008
14.9999	3292.248	15.0002	0.00028
18.5000	3538.448	18.4997	-0.00032
23.9999	3951.072	23.9999	0.00004
29.0000	4354.363	29.0001	0.00010
32.5000	4653.159	32.4999	-0.00005

Temperature ITS-90 = $1/g \{ h [ln(f_0/f)] + i [ln^2(f_0/f)] + j [ln^3(f_0/f)] \} - 273.15$ (°C)

Temperature ITS-68 = $1/a \{ b [ln(f_0/f)] + c [ln^2(f_0/f)] + d [ln^3(f_0/f)] \} - 273.15$ (°C)

Following the recommendation of JPOTS: T_{68} is assumed to be $1.00024 * T_{90}$ (-2 to 35 °C)

Residual = instrument temperature - bath temperature



**POST CRUISE
 CALIBRATION**



SEA-BIRD ELECTRONICS, INC.

1808 - 136th Place Northeast, Bellevue, Washington 98005 USA
Phone: (425) 643-9866 Fax: (425) 643-9954 www.seabird.com

Temperature Calibration Report

Customer:	Atlantic Marine Center		
Job Number:	42655	Date of Report:	4/7/2006
Model Number:	SBE 19	Serial Number:	1913768-2039

Temperature sensors are normally calibrated 'as received', without adjustments, allowing a determination sensor drift. If the calibration identifies a problem, then a second calibration is performed after work is completed. The 'as received' calibration is not performed if the sensor is damaged or non-functional, or by customer request.

An 'as received' calibration certificate is provided, listing coefficients to convert sensor frequency to temperature. Users must choose whether the 'as received' calibration or the previous calibration better represents the sensor condition during deployment. In SEASOFT enter the chosen coefficients using the program SEACON. The coefficient 'offset' allows a small correction for drift between calibrations (consult the SEASOFT manual). Calibration coefficients obtained after a repair apply only to subsequent data.

'AS RECEIVED CALIBRATION'

Performed Not Performed

Date:

Drift since last cal: Degrees Celsius/year

Comments:

'CALIBRATION AFTER REPAIR'

Performed Not Performed

Date:

Drift since Last cal: Degrees Celsius/year

Comments:

SEA-BIRD ELECTRONICS, INC.
 1808 136th Place N.E., Bellevue, Washington, 98005 USA
 Phone: (425) 643 - 9866 Fax (425) 643 - 9954 Email: seabird@seabird.com

SENSOR SERIAL NUMBER: 2039
 CALIBRATION DATE: 07-Apr-06

SBE19 CONDUCTIVITY CALIBRATION DATA
 PSS 1978: C(35,15,0) = 4.2914 Siemens/meter

GHJJ COEFFICIENTS

g = -3.94380852e+000
 h = 4.70247301e-001
 i = 1.31269273e-003
 j = -3.62813561e-005
 CPcor = -9.5700e-008 (nominal)
 CTcor = 3.2500e-006 (nominal)

ABCDM COEFFICIENTS

a = 4.84359493e-002
 b = 4.18624542e-001
 c = -3.93189662e+000
 d = -1.41460217e-004
 m = 2.1
 CPcor = -9.5700e-008 (nominal)

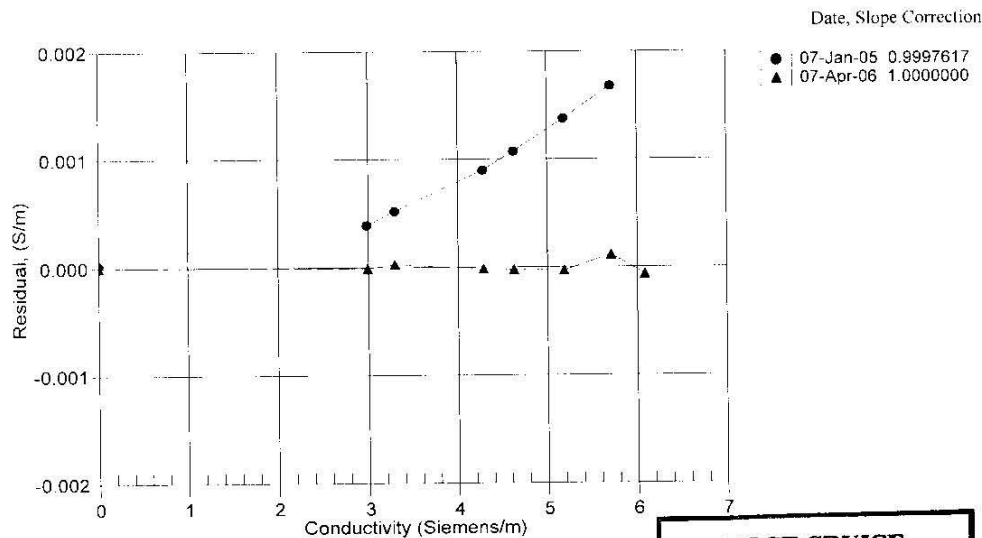
BATH TEMP (ITS-90)	BATH SAL (PSU)	BATH COND (Siemens/m)	INST FREQ (kHz)	INST COND (Siemens/m)	RESIDUAL (Siemens/m)
22.0000	0.0000	0.00000	2.88530	0.00000	0.00000
1.0000	34.9499	2.98629	8.40354	2.98628	-0.00001
4.4999	34.9298	3.29437	8.77583	3.29439	0.00003
14.9999	34.8670	4.27936	9.87120	4.27934	-0.00001
18.5000	34.8779	4.62566	10.22820	4.62563	-0.00002
23.9999	34.8682	5.18548	10.78011	5.18545	-0.00003
29.0000	34.8631	5.70912	11.27187	5.70923	0.00011
32.5000	34.8600	6.08275	11.60967	6.08268	-0.00006

Conductivity = $(g + hf^2 + if^3 + jr^4) / 10(1 - \delta t - \epsilon p)$ Siemens/meter

Conductivity = $(a1^m + bf^2 + c + dt) / [10(1 + \epsilon p)]$ Siemens/meter

t = temperature[°C]; p = pressure[decibars]; δ = CTcor; ϵ = CPcor;

Residual = (instrument conductivity - bath conductivity) using g, h, i, j coefficients



**POST CRUISE
 CALIBRATION**



SEA-BIRD ELECTRONICS, INC.

1808 - 136th Place Northeast, Bellevue, Washington 98005 USA
Phone: (425) 643-9866 Fax: (425) 643-9954 www.seabird.com

Conductivity Calibration Report

Customer:	Atlantic Marine Center		
Job Number:	42655	Date of Report:	4/7/2006
Model Number:	SBE 19	Serial Number:	1913768-2039

Conductivity sensors are normally calibrated 'as received', without cleaning or adjustments, allowing a determination of sensor drift. If the calibration identifies a problem or indicates cell cleaning is necessary, then a second calibration is performed after work is completed. The 'as received' calibration is not performed if the sensor is damaged or non-functional, or by customer request.

An 'as received' calibration certificate is provided, listing the coefficients used to convert sensor frequency to conductivity. Users must choose whether the 'as received' calibration or the previous calibration better represents the sensor condition during deployment. In SEASOFT enter the chosen coefficients using the program SEACON. The coefficient 'slope' allows small corrections for drift between calibrations (consult the SEASOFT manual). Calibration coefficients obtained after a repair or cleaning apply only to subsequent data.

'AS RECEIVED CALIBRATION'

Performed Not Performed

Date:

Drift since last cal: PSU/month*

Comments:

'CALIBRATION AFTER CLEANING & REPLATINIZING'

Performed Not Performed

Date:

Drift since Last cal: PSU/month*

Comments:

*Measured at 3.0 S/m

Cell cleaning and electrode replatinizing tend to 'reset' the conductivity sensor to its original condition. Lack of drift in post-cleaning-calibration indicates geometric stability of the cell and electrical stability of the sensor circuit.

SEA-BIRD ELECTRONICS, INC.

1808 136th Place N.E., Bellevue, Washington, 98005 USA

Phone: (425) 643 - 9866 Fax (425) 643 - 9954 Email: seabird@seabird.com

SENSOR SERIAL NUMBER: 2039
CALIBRATION DATE: 10-Apr-06

SBE19 PRESSURE CALIBRATION DATA
300 psia S/N 133248 TCY: 489

QUADRATIC COEFFICIENTS:
PA0 = 1.484621e+002
PA1 = -3.905807e-002
PA2 = 2.490046e-008

STRAIGHT LINE FIT:
M = -3.905568e-002
B = 1.486022e+002

PRESSURE PSIA	INST OUTPUT(N)	COMPUTED PSIA	ERROR %FS	LINEAR PSIA	ERROR %FS
14.54	3437.0	14.51	-0.01	14.37	-0.06
59.67	2281.0	59.50	-0.06	59.52	-0.05
119.68	743.0	119.46	-0.07	119.58	-0.03
179.67	-795.0	179.53	-0.05	179.65	-0.01
239.67	2329.0	239.56	-0.03	239.56	-0.04
299.66	-3860.0	299.60	-0.02	299.36	-0.10
239.66	-2336.0	239.84	0.06	239.84	0.06
179.65	-804.0	179.88	0.08	180.00	0.12
119.65	735.0	119.77	0.04	119.90	0.08
59.66	2274.0	59.77	0.04	59.79	0.04
14.54	3434.0	14.63	0.03	14.48	-0.02

Straight Line Fit:

$$\text{Pressure (psia)} = M * N + B \text{ (N = binary output)}$$

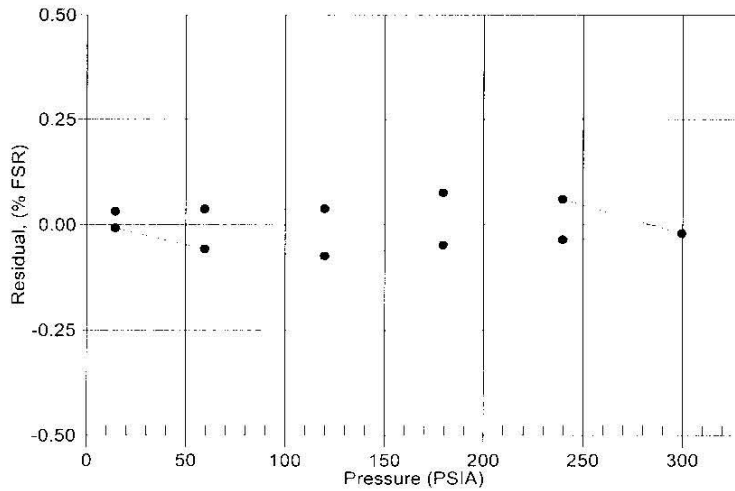
Quadratic Fit:

$$\text{pressure (psia)} = PA0 + PA1 * N + PA2 * N^2$$

$$\text{Residual} = (\text{instrument pressure} - \text{true pressure}) * 100 / \text{Full Scale Range}$$

Date, Avg Delta P %FS

10-Apr-06 0.00



Date:
Sep 22, 2004

Serial #:
SN:98308-092204

DIGIBAR CALIBRATION REPORT

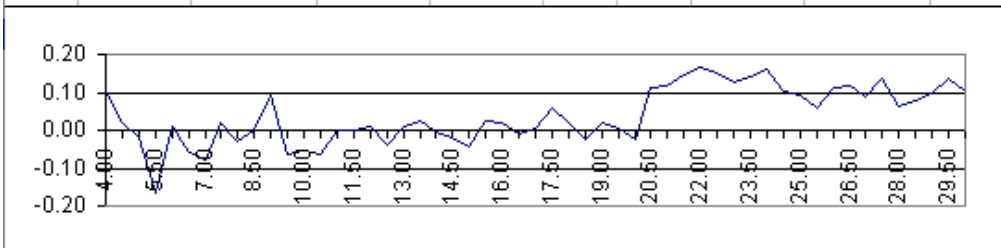
version 1.0 (c) 2004

ODOM HYDROGRAPHIC SYSTEMS, Inc.



STANDARD DEL GROSSO H²O

TEMP	VELOCITY	MEASURED	RES_VEL	OBS-CAL	TEMP	VELOCITY	MEASURED	RES_VEL	OBS-CAL
		FREQUENCY					FREQUENCY		
4.00	1421.62	5544.91	1421.73	0.11	17.50	1474.38	5745.84	1474.44	0.06
4.50	1423.90	5553.27	1423.92	0.02	18.00	1476.01	5751.90	1476.03	0.02
5.00	1426.15	5561.71	1426.13	-0.02	18.50	1477.62	5757.86	1477.59	-0.02
5.50	1428.38	5569.64	1428.21	-0.16	19.00	1479.21	5764.08	1479.22	0.02
6.00	1430.58	5578.68	1430.59	0.01	19.50	1480.77	5769.99	1480.78	0.00
6.50	1432.75	5586.71	1432.69	-0.06	20.00	1482.32	5775.78	1482.29	-0.02
7.00	1434.90	5594.83	1434.82	-0.08	20.50	1483.84	5782.11	1483.95	0.11
7.50	1437.02	5603.28	1437.04	0.02	21.00	1485.35	5787.86	1485.46	0.12
8.00	1439.12	5611.08	1439.09	-0.03	21.50	1486.83	5793.63	1486.98	0.15
8.50	1441.19	5619.09	1441.19	0.00	22.00	1488.29	5799.27	1488.46	0.16
9.00	1443.23	5627.24	1443.33	0.09	22.50	1489.74	5804.73	1489.89	0.15
9.50	1445.25	5634.36	1445.19	-0.06	23.00	1491.16	5810.06	1491.29	0.13
10.00	1447.25	5642.00	1447.20	-0.05	23.50	1492.56	5815.47	1492.71	0.14
10.50	1449.22	5649.47	1449.16	-0.07	24.00	1493.95	5820.83	1494.11	0.16
11.00	1451.17	5657.15	1451.17	0.00	24.50	1495.32	5825.80	1495.42	0.10
11.50	1453.09	5664.47	1453.09	0.00	25.00	1496.66	5830.90	1496.75	0.09
12.00	1454.99	5671.75	1455.00	0.01	25.50	1497.99	5835.82	1498.05	0.06
12.50	1456.87	5678.73	1456.83	-0.04	26.00	1499.30	5841.02	1499.41	0.11
13.00	1458.72	5685.98	1458.74	0.01	26.50	1500.59	5845.95	1500.70	0.12
13.50	1460.55	5693.00	1460.58	0.02	27.00	1501.86	5850.69	1501.95	0.09
14.00	1462.36	5699.78	1462.36	0.00	27.50	1503.11	5855.65	1503.25	0.14
14.50	1464.14	5706.52	1464.12	-0.02	28.00	1504.35	5860.07	1504.41	0.06
15.00	1465.91	5713.14	1465.86	-0.05	28.50	1505.56	5864.77	1505.64	0.08
15.50	1467.65	5720.03	1467.67	0.02	29.00	1506.76	5869.41	1506.86	0.10
16.00	1469.36	5726.56	1469.38	0.02	29.50	1507.94	5874.05	1508.07	0.13
16.50	1471.06	5732.91	1471.05	-0.01	30.00	1509.10	5878.37	1509.21	0.10
17.00	1472.73	5739.33	1472.73	0.00					



Odom Hydrographic Systems, Inc.

1450 SeaBoard Avenue, Baton Rouge, Louisiana 70810-6261, USA

Telephone: (225)-763-3051, Facsimile: (225)-766-5122

E-mail: email@odomhydrographic.com, HTTP: www.odomhydrographic.com

Date:
Sep 22, 2004

Serial #:
SN:dbp092204

DIGIBAR CALIBRATION REPORT

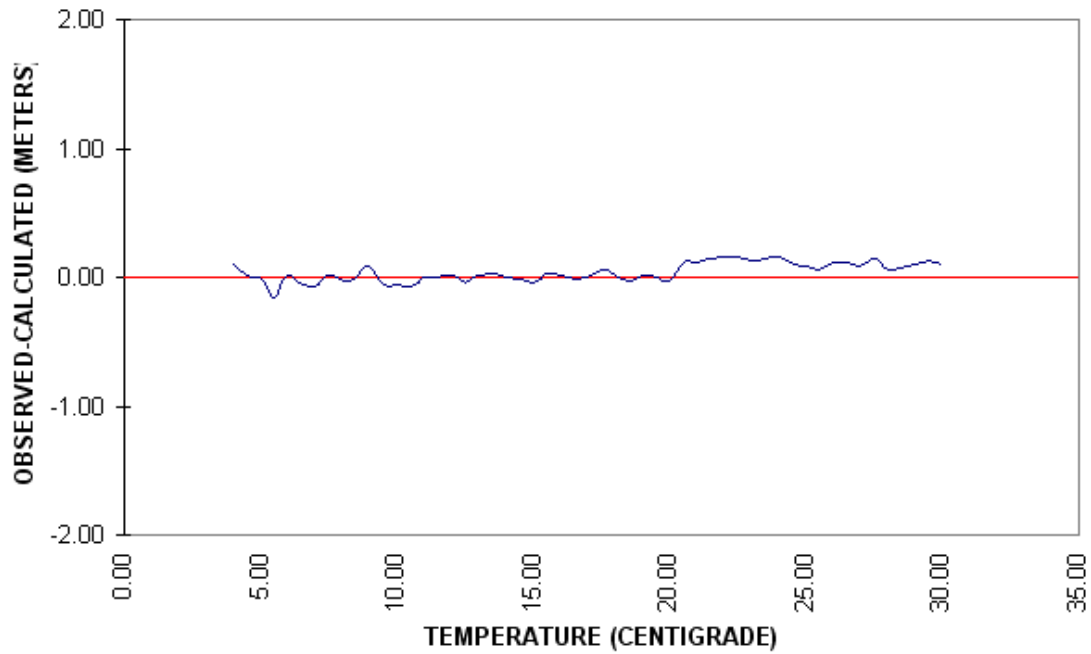
version 1.0 (c) 2004

ODOM HYDROGRAPHIC SYSTEMS, Inc.



Burn these numbers to EPROM:	Gradient	3359
	Intercept	330

Calibration Graph



Odom Hydrographic Systems, Inc.

1450 Seaboard Avenue, Baton Rouge, Louisiana 70810-6261, USA

Telephone: (225)-763-3051, Facsimile: (225)-766-5122

E-mail: email@odomhydrographic.com, [HTTP: www.odomhydrographic.com](http://www.odomhydrographic.com)

Date:
Oct 22, 2004

Serial #:
SN:98314-102204

DIGIBAR CALIBRATION REPORT

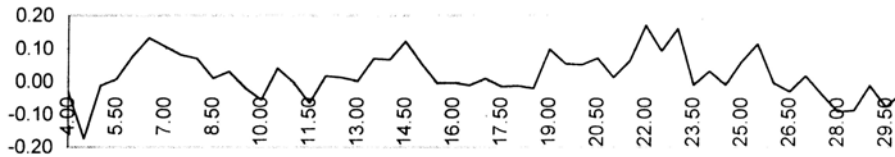
version 1.0 (c) 2004

ODOM HYDROGRAPHIC SYSTEMS, Inc



STANDARD DEL GROSSO H²O

TEMP	VELOCITY	MEASURED	RES_VEL	OBS-CAL	TEMP	VELOCITY	MEASURED	RES_VEL	OBS-CAL
FREQUENCY					FREQUENCY				
4.00	1421.62	5545.09	1421.59	-0.03	17.50	1474.38	5745.58	1474.37	-0.01
4.50	1423.90	5553.21	1423.73	-0.17	18.00	1476.01	5751.78	1476.00	-0.01
5.00	1426.15	5562.38	1426.14	-0.01	18.50	1477.62	5757.86	1477.60	-0.02
5.50	1428.38	5570.91	1428.39	0.01	19.00	1479.21	5764.34	1479.30	0.10
6.00	1430.58	5579.53	1430.66	0.08	19.50	1480.77	5770.12	1480.83	0.06
6.50	1432.75	5588.00	1432.89	0.13	20.00	1482.32	5775.98	1482.37	0.05
7.00	1434.90	5596.06	1435.01	0.11	20.50	1483.84	5781.85	1483.91	0.07
7.50	1437.02	5604.02	1437.10	0.08	21.00	1485.35	5787.34	1485.36	0.01
8.00	1439.12	5611.94	1439.19	0.07	21.50	1486.83	5793.17	1486.89	0.06
8.50	1441.19	5619.58	1441.20	0.01	22.00	1488.29	5799.14	1488.47	0.17
9.00	1443.23	5627.43	1443.26	0.03	22.50	1489.74	5804.33	1489.83	0.10
9.50	1445.25	5634.92	1445.24	-0.02	23.00	1491.16	5810.00	1491.32	0.16
10.00	1447.25	5642.37	1447.20	-0.05	23.50	1492.56	5814.68	1492.56	-0.01
10.50	1449.22	5650.22	1449.26	0.04	24.00	1493.95	5820.10	1493.98	0.03
11.00	1451.17	5657.46	1451.17	0.00	24.50	1495.32	5825.13	1495.31	-0.01
11.50	1453.09	5664.53	1453.03	-0.06	25.00	1496.66	5830.51	1496.72	0.06
12.00	1454.99	5672.06	1455.01	0.02	25.50	1497.99	5835.76	1498.11	0.12
12.50	1456.87	5679.17	1456.88	0.01	26.00	1499.30	5840.28	1499.29	0.00
13.00	1458.72	5686.17	1458.73	0.00	26.50	1500.59	5845.08	1500.56	-0.03
13.50	1460.55	5693.38	1460.63	0.07	27.00	1501.86	5850.09	1501.88	0.02
14.00	1462.36	5700.23	1462.43	0.07	27.50	1503.11	5854.64	1503.08	-0.04
14.50	1464.14	5707.22	1464.27	0.12	28.00	1504.35	5859.13	1504.26	-0.09
15.00	1465.91	5713.65	1465.96	0.05	28.50	1505.56	5863.76	1505.48	-0.09
15.50	1467.65	5720.03	1467.64	0.00	29.00	1506.76	5868.60	1506.75	-0.01
16.00	1469.36	5726.56	1469.36	0.00	29.50	1507.94	5872.84	1507.87	-0.07
16.50	1471.06	5732.97	1471.05	-0.01	30.00	1509.10	5877.42	1509.07	-0.03
17.00	1472.73	5739.40	1472.74	0.01					



Odom Hydrographic Systems, Inc.

1450 SeaBoard Avenue, Baton Rouge, Louisiana 70810-6261, USA

Telephone: (225)-769-3051, Facsimile: (225)-766-5122

E-mail: email@odomhydrographic.com, HTTP: www.odomhydrographic.com

Date:
Oct 22, 2004

Serial #:
SN:dbp102204

DIGIBAR CALIBRATION REPORT

version 1.0 (c) 2004

ODOM HYDROGRAPHIC SYSTEMS, Inc.

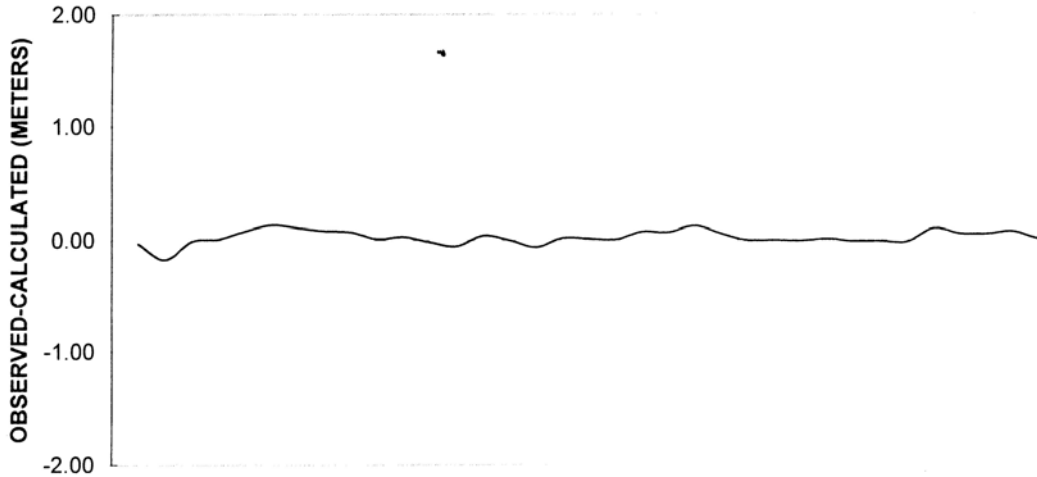


Burn these numbers to EPROM:

Gradient
Intercept

3370
381

Calibration Graph



TEMPERATURE (CENTIGRADE)



Odom Hydrographic Systems, Inc.

1450 SeaBoard Avenue, Baton Rouge, Louisiana 70810-6261 USA
Telephone (225)-769-3051, Facsimile (225)-766-5122
E-mail: email@odomhydrographic.com, HTTP: www.odomhydrographic.com