

D00166

NOAA Form 76-35A

U.S. Department of Commerce  
National Oceanic and Atmospheric Administration  
National Ocean Survey

**DESCRIPTIVE REPORT**

Type of Survey: Investigation

Registry Number: D00166

**LOCALITY**

State: Alabama

General Locality: Mobile

Sub-locality: Mobile River

**2012**

CHIEF OF PARTY  
Mark J. McMann

LIBRARY & ARCHIVES

Date:

**HYDROGRAPHIC TITLE SHEET**

**D00166**

**INSTRUCTIONS:** The Hydrographic Sheet should be accompanied by this form, filled in as completely as possible, when the sheet is forwarded to the Office.

State: **Alabama**

General Locality: **Mobile**

Sub-Locality: **Mobile River**

Scale: **1: 10,000**

Dates of Survey: **5/11/2012 – 5/12/2012**

Instructions Dated: **4/27/2012**

Project Number: **S-J920-NRT1-12**

Field Unit: **Navigation Response Team 1**

Chief of Party: **Mark J. McMann**

Soundings by: **Single Beam Echosounder Odom CV2**

Imagery by: **Side Scan Sonar, Edgetech 4125**

Verification by: **Pacific Hydrographic Branch**

Soundings Acquired in: **meters at Mean Lower Low Water**

H-Cell Compilation Units: **N/A**

**Remarks:**

*The purpose of this survey was a demonstration to the port of Mobile, AL. All separates are filed with the hydrographic data. Any revisions to the Descriptive Report memo (DR) generated during office processing are shown in bold red italic text. The processing branch maintains the DR as a field unit product, therefore, all information and recommendations within the body of the DR memo are considered preliminary unless otherwise noted. The final disposition of surveyed features is represented in the OCS nautical chart update products. All pertinent records for this survey, including the DR, are archived at the National Geophysical Data Center (NGDC) and can be retrieved via <http://www.ngdc.noaa.gov/>.*



U.S. Department of Commerce  
National Oceanic and Atmospheric Administration  
Office of Coast Survey  
Navigation Services Division

**MEMORANDUM FOR:** Chief, Pacific Hydrographic Branch

**FROM:** Mark J. McMann  
Team Lead NRT-1

**SUBJECT:** Submission of Survey D00166

Survey D00166 was conducted by NRT-1 in response to a request from Patrick Fink, the NOAA contractor acting as a Navigation Assistant, in Mobile, AL. The survey was a demonstration for the Port of Mobile to show NOAA capabilities for response surveys and to ensure no obstructions existed outside of the Corps maintained channels. Side Scan Sonar and Single Beam Echosounder data was collected in the areas adjacent to the U.S. Army Corps of Engineers project channels in the port.

NRT-1 provided paper sounding plots to Patrick Fink and the Port of Mobile that contained depths corrected with preliminary water levels.

Soundings were reduced to MLLW (MLLW) using preliminary tides from station 873-7048, Mobile State Docks, using a zero tide corrector due to the close proximity of the station.

All survey systems and methods utilized were as described in S-J910-NRT1-11\_DAPR. The data contained in the DAPR for Survey launch 3004 is applicable to this survey without any changes.

This survey does not meet charting specifications and is not adequate to supersede charted data.<sup>1</sup>





U.S. Department of Commerce  
National Oceanic and Atmospheric Administration  
Office of Coast Survey  
Navigation Services Division

Meta Data for D00166	
Project	S-J920-NRT1-12
Survey	D00116
State	Alabama
Locality	Mobile
Sub Locality	Mobile River
Scale of Survey	1:10000
Sonars Used	Edgetech 4125, Odom CV2
Horizontal Datum	North American Datum of 1983 (NAD83)
Vertical Datum	Mean Lower Low Water (MLLW)
Vertical Datum Correction	Preliminary Observed Tides from Gauge 873-7048
Projection	Latitude-Longitude (NAD83) - UTM Zone 16N
Field Unit	NRT-1
Survey Dates	05/11/2012 – 05/12/2012
Chief of Party	Mark J McMann
Submission Date	12/15/14

<sup>1</sup> Select updates were approved for specific charted features as listed in the appended chart letter submitted to MCD on April 30, 2105.





UNITED STATES DEPARTMENT OF COMMERCE  
National Oceanic and Atmospheric Administration  
NATIONAL OCEAN SERVICE  
OFFICE OF COAST SURVEY  
Pacific Hydrographic Branch  
Seattle, Washington 98115-6349

April 30, 2015

MEMORANDUM FOR: Tara Wallace  
Chief, Nautical Data Branch

THROUGH: CDR Benjamin K Evans, NOAA  
Chief, Pacific Hydrographic Branch

FROM: Kurt Brown  
Physical Scientist, Pacific Hydrographic Branch

SUBJECT: Recommendation for chart updates

*Mr. K. Evans*  
Digitally signed by EVANS.BENJAMIN.K.1237217094  
Reason: I am approving this document  
Date: 2015.04.30 09:16:23 -07'00'

*Kurt Brown*  
Digitally signed by BROWN.KURT.E.1156712800  
Reason: I am approving this document  
Date: 2015.04.30 09:16:23 -07'00'

Survey D00166 (Project S-J920-NRT1-12, Mobile Bay) was a demonstration survey and not intended for compilation. The survey data, BAG, and GeoImage will be archived at NGDC, but no HCell will be submitted. After review of survey the following updates to raster chart 11376 (Edition 57, 1/1/2014) were deemed appropriate use of the survey's side scan sonar and single-beam data coverage, despite the survey not fully meeting NOAA's charting specifications.

Delete charted wreck PA at position: 30-43-27N, 088-02-33W (Figure 1).

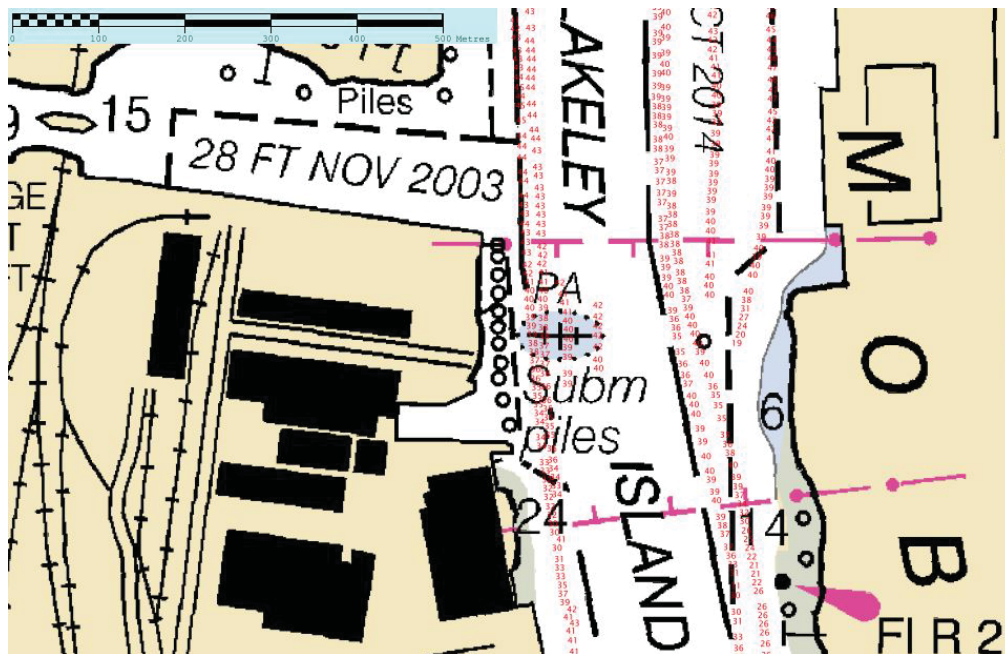


Figure 1



Delete Obstruction PA (20 ft. rep 2005) at position 30-42-38N, 88-02-19W (Figure 2).

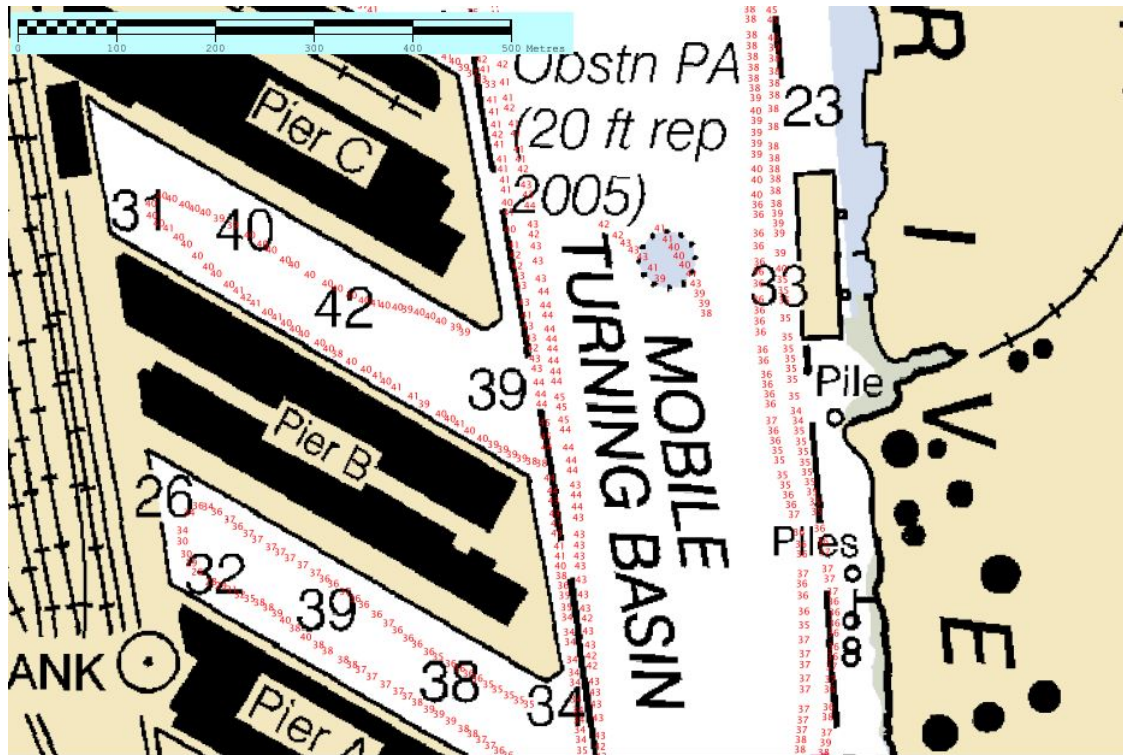


Figure 2

Delete wreck PA at position 30-40-54N, 88-02-14W (Figure 3).

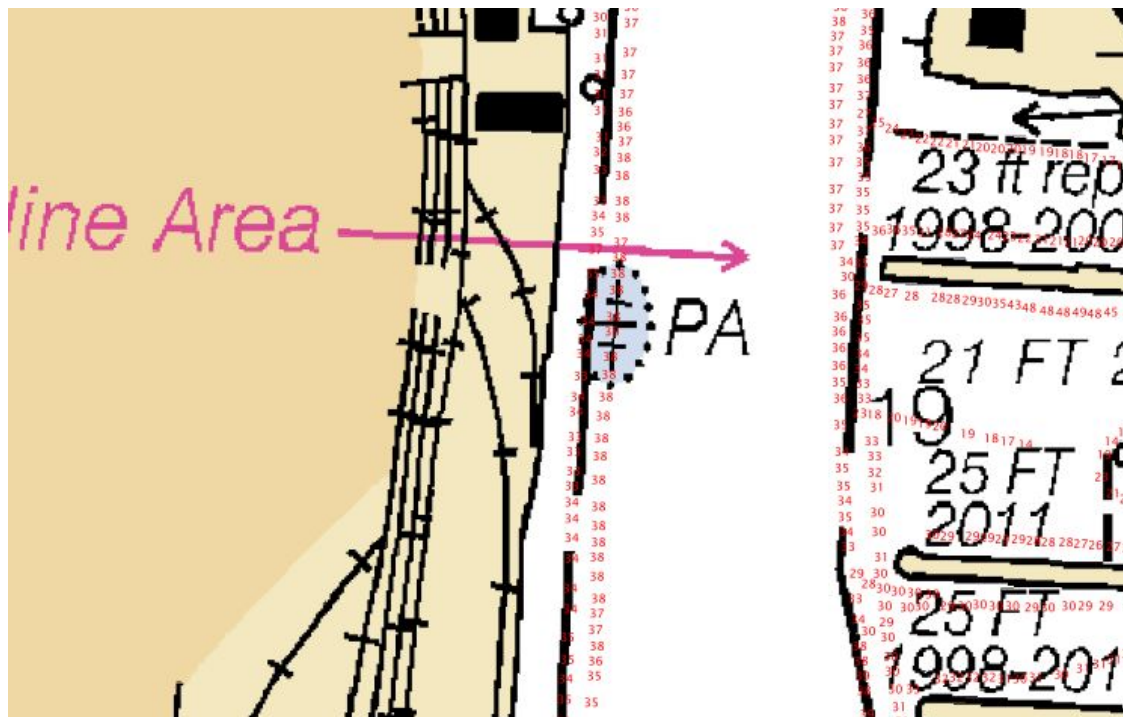


Figure 3

Sounding data from the survey conflicts with three of the charted notes at approximate position 30-40-54N, 088-02-03W (Figure 4).

17 ft. soundings were surveyed in the basin with the “23 ft. rep 1998-2005” note. This note’s depth and date should be updated to “17 ft. rep 2012”.

14 ft. and 10 ft. soundings were surveyed in the basins with “21 FT 2014” and “25 FT 2011” notes. The “21 FT 2014” note should be retained as long as its source is deemed more accurate than the survey data. The “25 FT 2011” note should be updated to “14 FT rep 2012”.

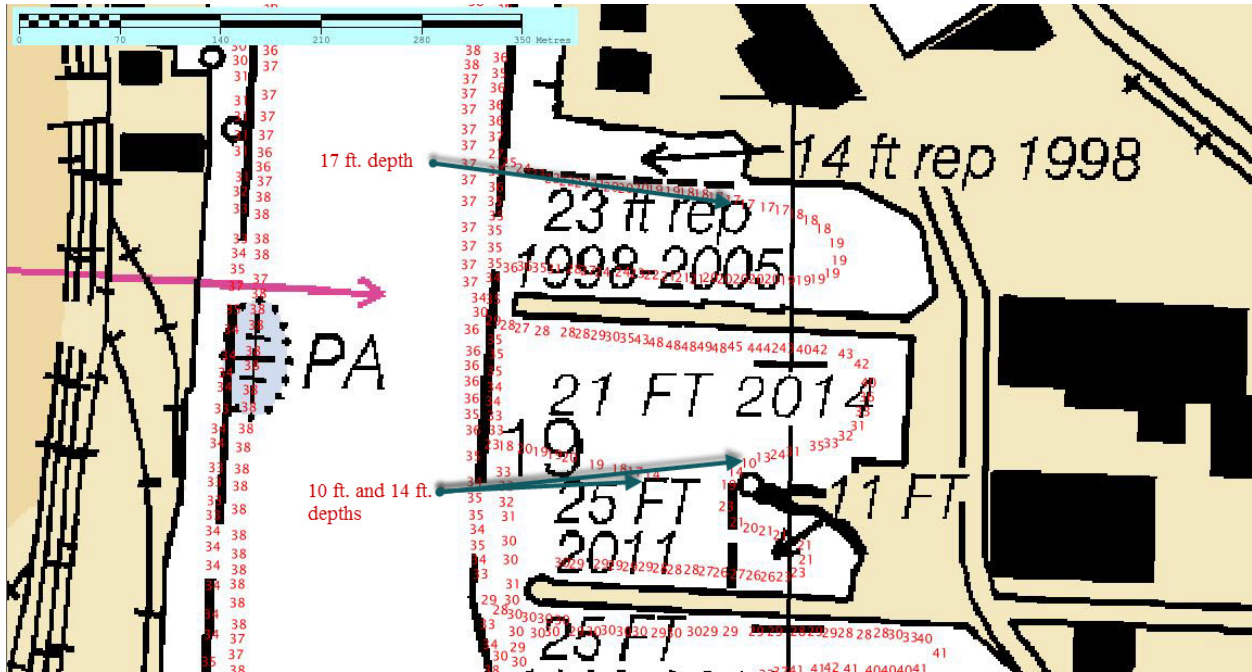


Figure 4

APPROVAL PAGE

D00166

Data did not meet current specifications as determined by the OCS survey acceptance review process. By design the survey was acquired as a demonstration project, thus it does not meet coverage and object detection requirements necessary to wholly supersede charted data. With the exception of the specific features documented in the chart letter, this survey will not be used to update NOAA charting products.

The following products will be sent to NGDC for archive:

- D00166\_DR\_Memo.pdf
- Processed survey data and records
- D00166\_GeoImage.pdf

The survey evaluation and verification has been conducted according to current OCS specifications and procedures.

Approved: \_\_\_\_\_

**Peter Holmberg**

Cartographic Team Lead, Pacific Hydrographic Branch

The survey has been approved for public dissemination. Select data from the survey are approved for limited usage of updating NOAA's suite of nautical charts.

Approved: \_\_\_\_\_

**CDR Benjamin K. Evans, NOAA**

Chief, Pacific Hydrographic Branch