

Subm buoy (66 fms) 65

**NOT FOR NAVIGATION**  
NATIONAL OCEANIC AND ATMOSPHERIC ADMINISTRATION  
NATIONAL OCEAN SERVICE  
OFFICE OF COAST SURVEY

**M-R908-FA-12, D00169**  
Bristol Bay, Alaska  
Unimak Island

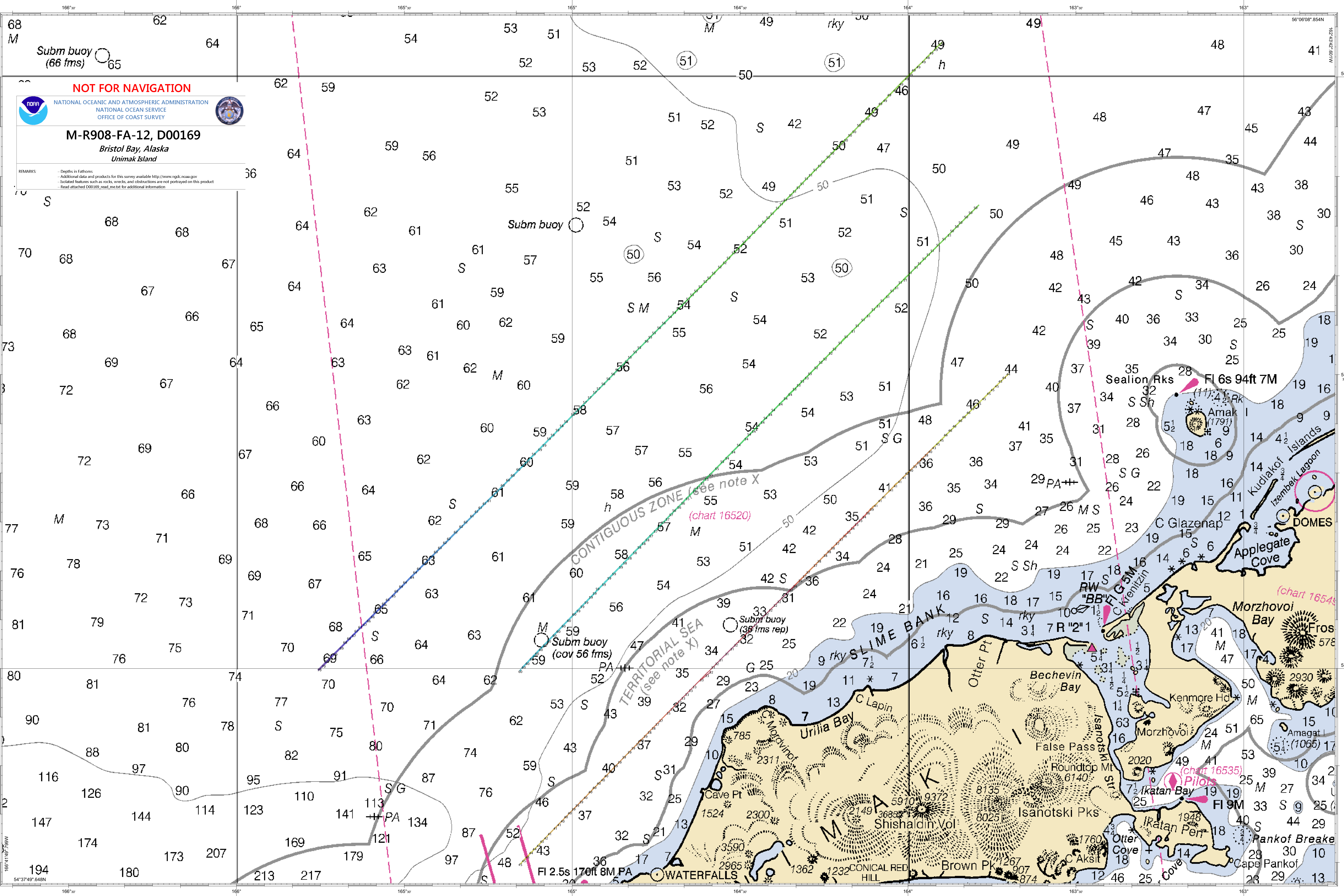
REMARKS  
- Depths in Fathoms  
- Additional data and products for this survey available <http://www.ngdc.noaa.gov>  
- Isolated features such as rocks, wrecks, and obstructions are not portrayed on this product  
- Read attached D00169\_read\_me.txt for additional information

CONTIGUOUS ZONE (see note X)  
(chart 16520)

TERRITORIAL SEA (see note X)

(chart 1654)

(chart 16535)



Subm buoy (66 fms) 65

**NOT FOR NAVIGATION**  
NATIONAL OCEANIC AND ATMOSPHERIC ADMINISTRATION  
NATIONAL OCEAN SERVICE  
OFFICE OF COAST SURVEY

**M-R908-FA-12, D00169**  
Bristol Bay, Alaska  
Unimak Island

REMARKS  
- Depths in Fathoms  
- Additional data and products for this survey available <http://www.ngdc.noaa.gov>  
- Isolated features such as rocks, wrecks, and obstructions are not portrayed on this product  
- Read attached D00169\_read\_me.txt for additional information

CONTIGUOUS ZONE (see note X)  
(chart 16520)

TERRITORIAL SEA (see note X)

(chart 1654)

(chart 16535)