

97°21'W 97°18'W 97°15'W 97°12'W 97°09'W 97°06'W 97°03'W

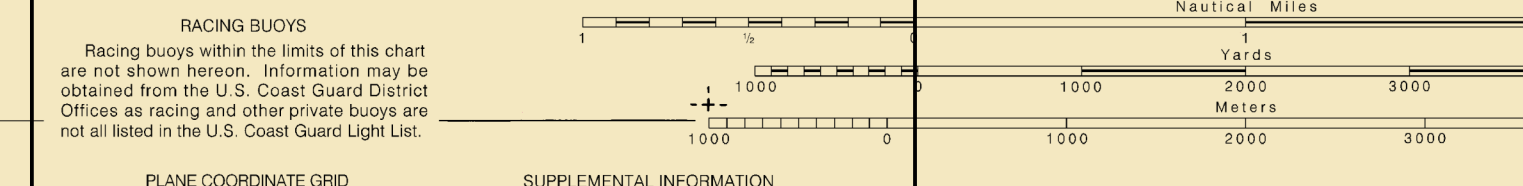
TIDAL INFORMATION

PLACE	HEIGHT REFERRED TO DATUM OF SOUNDINGS (MLLW)	MEAN HIGH WATER		MEAN LOW WATER	
		Mean	Mean	Mean	Mean
Aransas Pass Channel	07°50'N 097°03'W	1.4

HORIZONTAL DATUM
The horizontal reference datum of this chart is North American Datum of 1983 (NAD 83), which for charting purposes is considered equivalent to the World Geodetic System 1984 (WGS 84). Geographic positions referred to the North American Datum of 1927 must be corrected an average of 1.100' northward and 0.860' westward to agree with this chart.

AUTHORITIES
Hydrography and topography by the National Ocean Service, Coast Survey, with additional data from the Corps of Engineers, Geographical Survey, and U.S. Coast Guard.

RADAR REFLECTORS
Radar reflectors have been placed on many floating aids to navigation. Individual radar reflector identification on these aids has been omitted from this chart.



RACING BUOYS
Racing buoys within the limits of this chart are not shown hereon. Information may be obtained from the U.S. Coast Guard District Office as racing and other private buoys are not listed in the U.S. Coast Guard Light List.

PLANE COORDINATE GRID
Based on NAD 1983
The Texas State Grid, south zone, is indicated on this chart at 20,000 foot intervals thus:

NOTE A
Additional regulations are published in Chapter 2, U.S. Pilot 5. Additions or revisions to Chapter 2 are published in the Notice to Mariners. Information concerning the regulations may be obtained at the Office of the Commander, Coast Guard District in New Orleans, LA, or at the Office of the Engineer, Corps of Engineers in Galveston, TX. Refer to chart for additional section numbers.

NOTE
La Quinta Channel A, Inner Sector A/C
FR 282.9° to 283.3°
FR 282.9° to 283.3°
FR 282.9° to 283.3°
FR 282.9° to 283.3° (centered on channel)
FR 282.9° to 283.3°
FR 282.9° to 283.3°
FR 282.9° to 283.3°

TABLE 1
CORPUS CHRISTI CHANNEL DEPTHS
BASED ON SURVEYS BY THE CORPS OF ENGINEERS - REPORT OF MAR 2015

NAME OF CHANNEL	DEPTH (FEET)	DATE OF SURVEY	PROJECT DIMENSIONS	
			WIDTH (FEET)	DEPTH (FEET)
ARANSAS PASS	48.0	48.0	318	70000
JETTY CHANNEL	51.0	50.0	44.0	600
INNER BAY AT HARBOUR BARRAGE	51.0	52.0	54.0	600
HARBOR BARRAGE CHANNEL	45.0	45.0	37.0	600
LA QUINCY AT LA QUINCY	45.0	45.0	45.0	600
TURNING BAY	45.0	45.0	318	400
TURNING BAY CHANNEL EXTENSION	45.0	45.0	318	400

CAUTION
The prudent mariner will not rely solely on any single aid to navigation, particularly on floating aids. See U.S. Coast Guard Light List and U.S. Coast Pilot for details.

CAUTION
Limitations on the use of radio signals as aids to marine navigation can be found in the U.S. Coast Guard Light Lists and National Geospatial-Intelligence Agency Publication 117. Radio direction-finder equipment used for commercial broadcasting stations are subject to error and should be used with caution.

CAUTION
Temporary changes or defects in aids to navigation are not indicated on this chart. See Local Notice to Mariners.

NOTE
La Quinta Channel A - Outer Sector A/C
FR 101.9° to 102.7°
FR 102.7° to 102.9°
FR 102.7° to 102.9°
FR 102.7° to 102.9° (centered on channel)
FR 102.7° to 102.9°
FR 102.7° to 102.9°
FR 102.7° to 102.9°

NOAA WEATHER RADIO BROADCASTS
The NOAA Weather Radio stations listed below provide continuous weather broadcasts. The reception range is typically 20 to 40 nautical miles from the antenna site, but can be as much as 100 nautical miles for stations at high elevations.
Corpus Christi, TX KHB-41 162.550 MHz VHF-699
Pinesburg, TX WNC-609

NOTE
The position of sea plane lights, each showing FR 2.5s and marking mooring facilities, are not shown.

CAUTION
Improved channels shown by broken lines are subject to shoaling, particularly at the edges.

NOTE
INTRACASTAL WATERWAY
The project depth is 12 feet from Carrabelle, Florida, to Brownsville, Texas.
The controlling depths are published in the U.S. Coast Guard Light List.

CAUTION
ARANSAS PASS
Strong currents may be encountered in the vicinity of the jetty at the entrance to the harbor.

POLLUTION REPORTS
Report all spills of oil and hazardous substances to the National Response Center via 1-800-424-8802 (24 hours) or to the nearest U.S. Coast Guard facility by telephone communication in impossible (30 CFR 155).

RESTRICTED AREA
354,802 (see note A)
Port Ingress
No aircraft or other craft are permitted to enter or leave the area without the express permission of the U.S. Coast Guard.

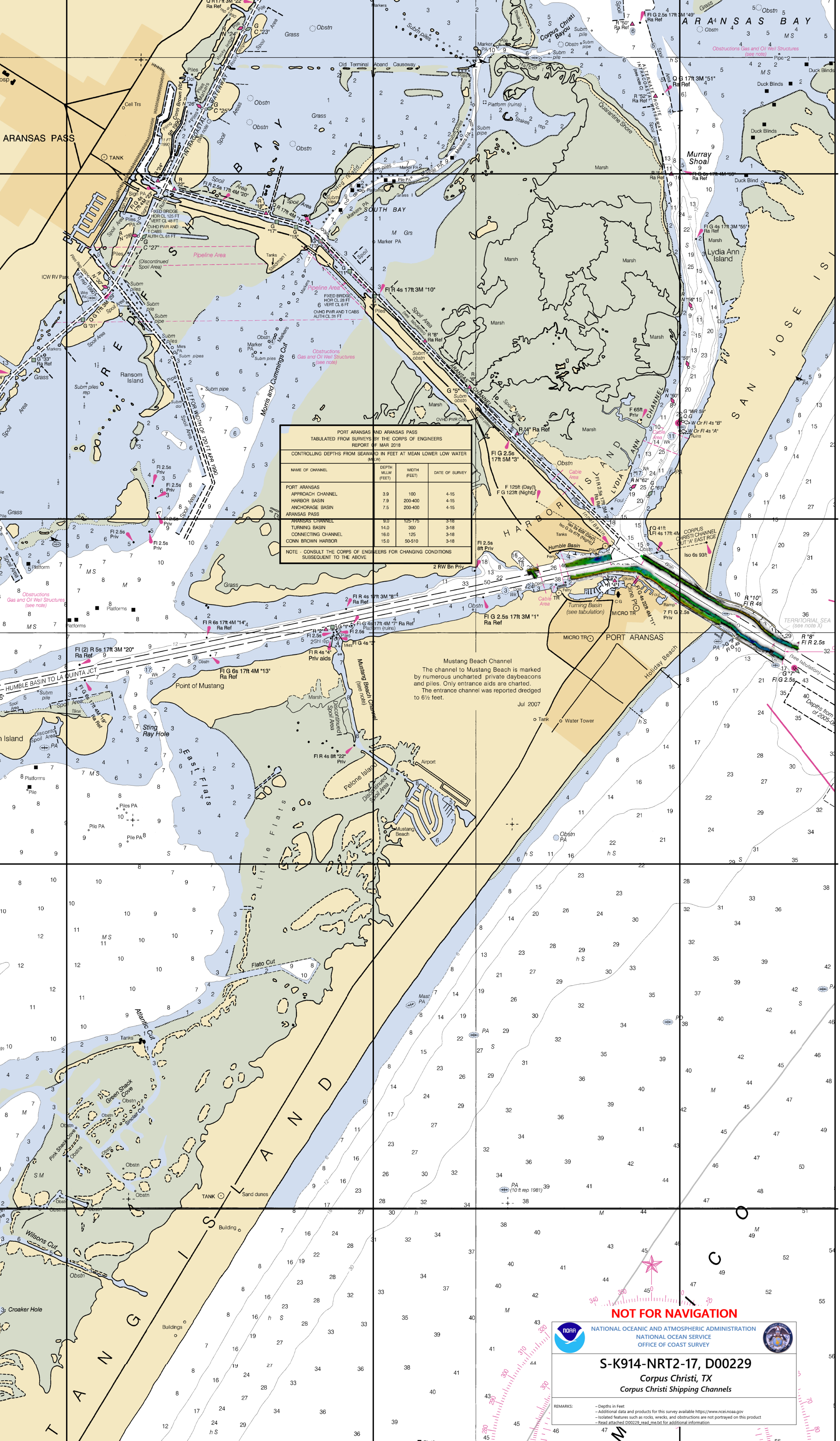


TABLE 2
PORT ARANSAS AND ARANSAS PASS
CONTROLLING DEPTHS FROM SURVEYS BY THE CORPS OF ENGINEERS - REPORT OF MAR 2015

NAME OF CHANNEL	DEPTH (FEET)	DATE OF SURVEY	PROJECT DIMENSIONS	
			WIDTH (FEET)	DEPTH (FEET)
PORT ARANSAS APPROACH CHANNEL	3.0	190	4.15	
HARBOR BARRAGE CHANNEL	1.0	200-400	4.15	
ANCHORAGE BAY	1.0	200-400	4.15	
ARANSAS PASS	1.0	100-150	3.18	
TURNING BAY	1.0	200	3.18	
CONDUIT CHANNEL	1.0	100	3.18	
CONN BROWN HARBOR	1.0	50-100	3.18	

NOTE
CONSULT THE CORPS OF ENGINEERS FOR CHANGING CONDITIONS INDEPENDENT TO THE ABOVE.

Mustang Beach Channel
The channel to Mustang Beach is marked by numerous uncharted private daybeacons and piles. Only entrance aids are charted. The entrance channel was reported dredged to 6.5 feet.
Jul 2007

97°21'W 97°18'W 97°15'W 97°12'W 97°09'W 97°06'W 97°03'W

NOT FOR NAVIGATION

NATIONAL OCEANIC AND ATMOSPHERIC ADMINISTRATION
NATIONAL OCEAN SERVICE
OFFICE OF COAST SURVEY

S-K914-NRT-17, D00229
Corpus Christi, TX
Corpus Christi Shipping Channels

REMARKS:
- Depth in Feet
- Additional aids and products for this survey available through NOAA's nautical charting website
- Material between each set of ovals, asterisks, and parentheses are not part of the product
- Some electronic charting software may not display all information on this chart