

82°36'W

82°33'W

27° 48' N

27° 48' N

27° 45' N

27° 45' N

27° 42' N

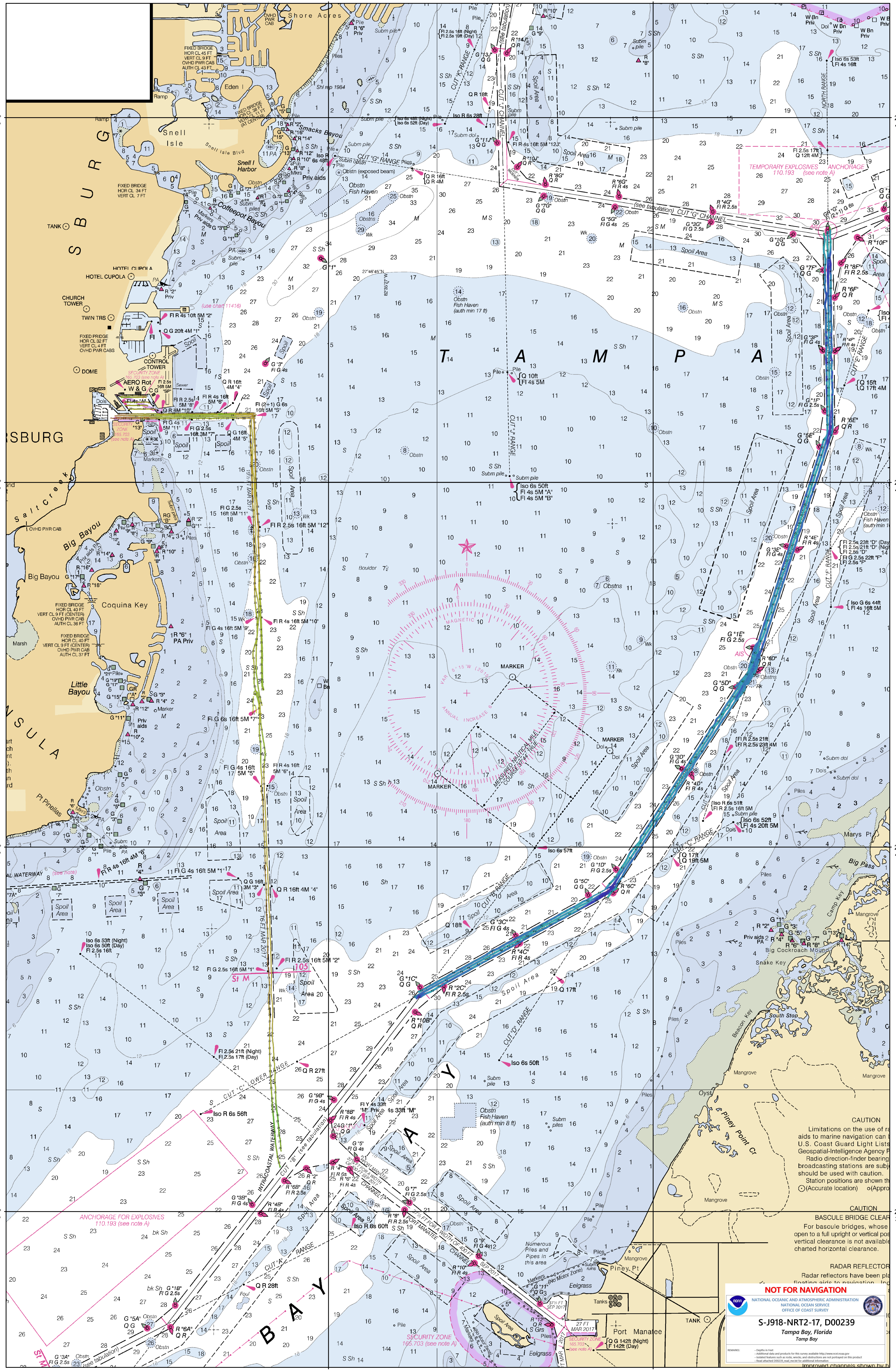
27° 42' N

27° 39' N

27° 39' N

82°36'W

82°33'W



CAUTION
 Limitations on the use of radio aids to marine navigation can be found in the U.S. Coast Guard Light Lists, Geospatial-Intelligence Agency Publications, and other sources. Radio direction-finder bearing stations are subject to change without notice. Station positions are shown in () for approximate location and (o) for approximate location.

CAUTION
 BASCULE BRIDGE CLEARANCE
 For bascule bridges, whose openings are full upright or vertical position, vertical clearance is not available. Charted horizontal clearance.

CAUTION
 RADAR REFLECTOR
 Radar reflectors have been placed in this area to aid in navigation.

NOT FOR NAVIGATION
 NATIONAL OCEANIC AND ATMOSPHERIC ADMINISTRATION
 NATIONAL OCEAN SERVICE
 OFFICE OF COAST SURVEY

S-J918-NRT2-17, D00239
 Tampa Bay, Florida
 Tampa Bay

27 FEB 2017
 MAR 2017
 165 703 (see note A)

REMARKS:
 - Depth in feet
 - Additional data and products for this survey available at <http://www.nce.noaa.gov>
 - Included features such as rocks, wrecks, and obstructions are not portrayed on this product
 - Detail changed 02/03/2017 and 03/2017 for additional information

Improved channels shown by...