

76°45'W

76°42'W

76°39'W

76°36'W

34° 57' N

34° 57' N

34° 54' N

34° 54' N

34° 51' N

34° 51' N

34° 48' N

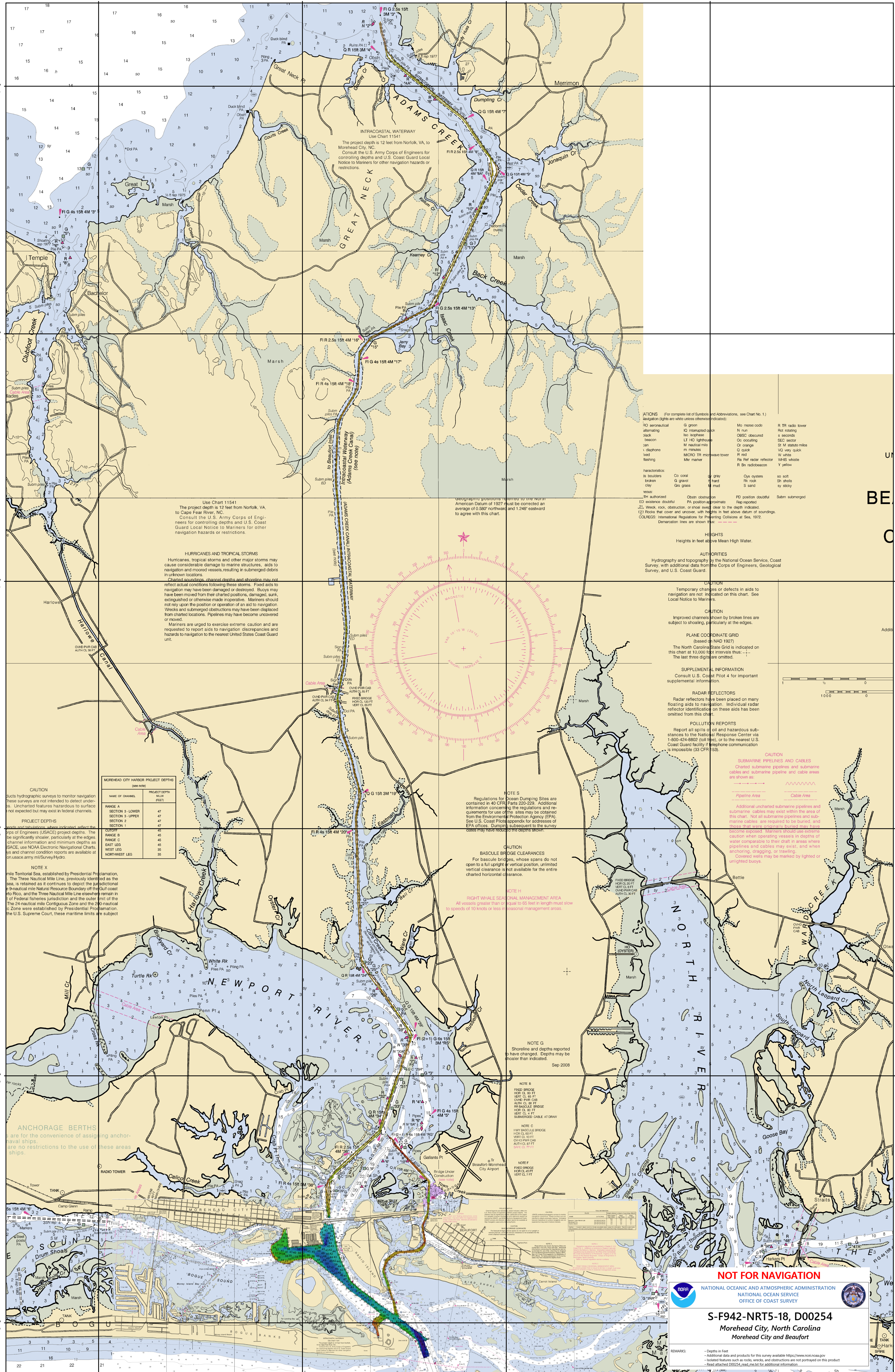
34° 48' N

34° 45' N

34° 45' N

34° 42' N

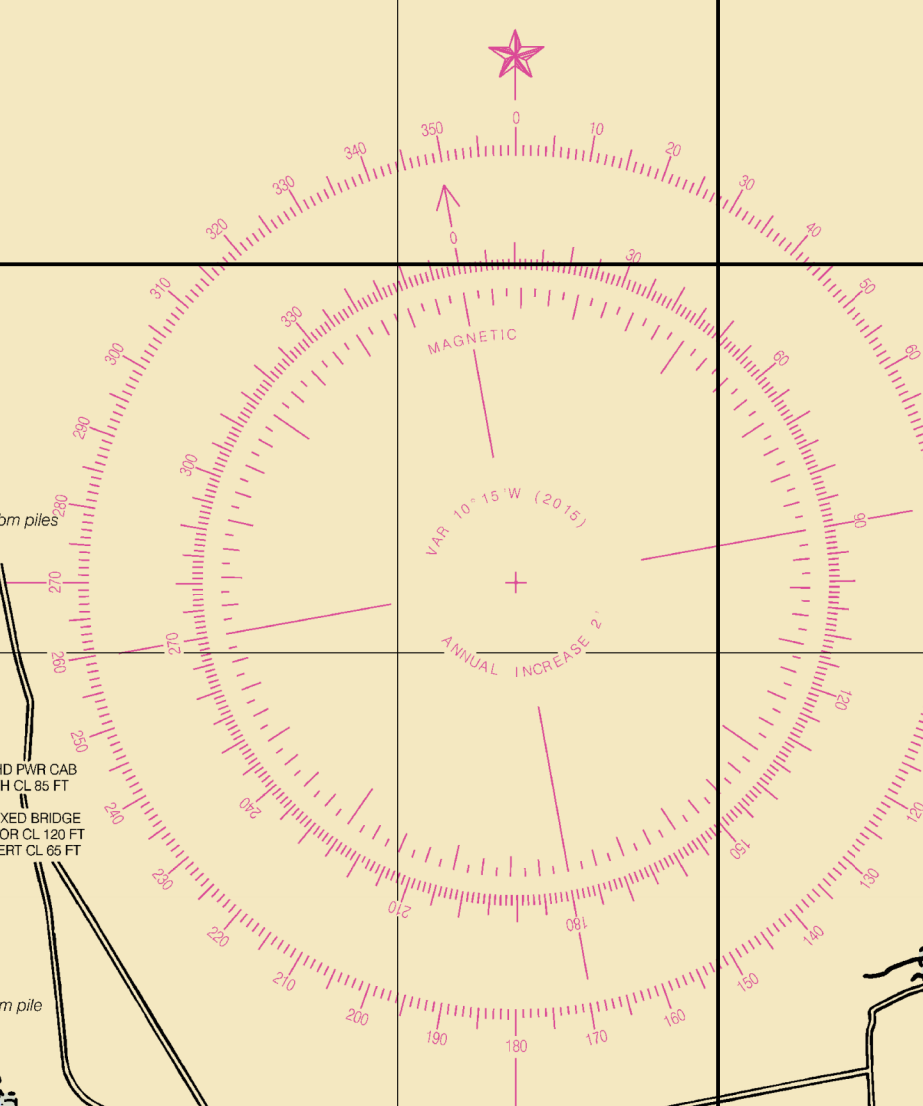
34° 42' N



Use Chart 11541. The project depth is 12 feet from Norfolk, VA, to Cape Fear River, NC. Consult the U.S. Army Corps of Engineers for controlling depths and U.S. Coast Guard Local Notice to Mariners for other navigation hazards or restrictions.

HURRICANES AND TROPICAL STORMS
Hurricanes, tropical storms and other major storms may cause considerable damage to marine structures, aids to navigation and moored vessels, resulting in submerged obstructions in unknown locations.
Charted soundings, channel depths and shoaling may not reflect actual conditions following these storms. Fixed aids to navigation may have been damaged or destroyed. Buoys may have been moved from their charted positions, damaged, sunk, extinguished or otherwise made inoperative. Mariners should not rely upon the position or operation of an aid to navigation. Wrecks and submerged obstructions may have been displaced from charted locations. Pipelines may have become uncovered or moved.
Mariners are urged to exercise extreme caution and are requested to report aids to navigation discrepancies and hazards to navigation to the nearest United States Coast Guard unit.

Geographic positions referred to the North American Datum of 1927 must be corrected an average of 0.980' northward and 1.246' eastward to agree with this chart.



ABBREVIATIONS (For complete list of Symbols and Abbreviations, see Chart No. 1.)

| | | | |
|-----------------|--------------------------|------------------------|-------------------|
| AO aeronautical | G grass | Mo moose code | R TR radio tower |
| alt alternating | IO interrupted quick | N nun | Rot rotating |
| back heacon | Is isophase | OC obscured | S seconds |
| can | LT HO light house | Co occulting | SEC sector |
| diaphano lead | M nautical miles | Cr orange | St M status miles |
| flashing | m minutes | Q quick | VQ very quick |
| Mer marker | MICRO TR microwave tower | R red | W white |
| | | Ra Ref radar reflector | WHIS whistle |
| | | R Br radiobeacon | Y yellow |

HEIGHTS
Heights in feet above Mean High Water.

AUTHORITIES
Hydrography and topography by the National Ocean Service, Coast Survey, with additional data from the U.S. Coast Guard.

CAUTION
Temporary changes or defects in aids to navigation are not indicated on this chart. See Local Notice to Mariners.

CAUTION
Improved channels shown by broken lines are subject to shoaling, particularly at the edges.

PLANE COORDINATE GRID
(Based on NAD 1927)
The North Carolina State Grid is indicated on this chart at 10,000 foot intervals thus: ---
The last three digits are omitted.

SUPPLEMENTAL INFORMATION
Consult U.S. Coast Pilot 4 for important supplemental information.

RADAR REFLECTORS
Radar reflectors have been placed on many floating aids to navigation. Individual radar reflector identification on these aids has been omitted from this chart.

POLLUTION REPORTS
Report all spills of oil and hazardous substances to the National Response Center via 1-800-424-8802 (toll free), or to the nearest U.S. Coast Guard facility if telephone communication is impossible (33 CFR 153).

CAUTION
SUBMARINE PIPELINES AND CABLES
Charted submarine pipelines and submarine cables and submarine pipeline and cable areas are shown as:
--- Pipeline Area
--- Cable Area
Additional uncharted submarine pipelines and submarine cables may exist within the area of this chart. Not all submarine pipelines and submarine cables are required to be buried, and those that were originally buried may have become unburied. Mariners should use extreme caution when operating vessels in depths of water comparable to their draft in areas where pipelines and cables may exist, and when anchoring, dragging, or trawling. Covered wells may be marked by lighted or unlighted buoys.

MOREHEAD CITY HARBOR PROJECT DEPTHS
(See Note)

| NAME OF CHANNEL | PROJECT DEPTH | WLLM | FEET |
|-------------------|---------------|------|------|
| RANGE A | 47 | | |
| SECTION 3 - LOWER | 47 | | |
| SECTION 3 - UPPER | 47 | | |
| SECTION 2 | 47 | | |
| SECTION 1 | 47 | | |
| CHOFFE | 45 | | |
| RANGE B | 45 | | |
| RANGE C | 45 | | |
| EAST LEG | 45 | | |
| WEST LEG | 35 | | |
| NORTHWEST LEG | 35 | | |

NOTE S
Regulations for Ocean Dumping Sites are contained in 40 CFR Parts 220-229. Additional information concerning the regulations and requirements for use of the sites may be obtained from the Environmental Protection Agency (EPA). See U.S. Coast Pilot 4 for addresses of EPA offices. Dumping subsequent to the survey dates may have occurred.

CAUTION
BASCULE BRIDGE CLEARANCES
For bascule bridges, whose spans do not open to a full upright vertical position, unimpaired vertical clearance is not available for the entire charted horizontal clearance.

NOTE H
RIGHT WHALE SEASONAL MANAGEMENT AREA
All vessels greater than or equal to 65 feet in length must show to speeds of 10 knots or less in seasonal management areas.

NOTE G
Shoreline and depths reported to have changed. Depths may be shallower than indicated.
Sep 2008

NOTE B
FIXED BRIDGE
NON CL 90 FT
VERT CL 65 FT
CHOFFE PIKE CAB
AULT CL 65 FT
BR BASCULE BRIDGE
NON CL 90 FT
VERT CL 65 FT
SUBMERGED CABLE AT DRAW

NOTE C
HIW BASCULE BRIDGE
NON CL 90 FT
VERT CL 65 FT
CHOFFE PIKE CAB
AULT CL 65 FT
SUB CL 72 FT

NOTE F
FIXED BRIDGE
NON CL 90 FT
VERT CL 65 FT

NOT FOR NAVIGATION

NATIONAL OCEANIC AND ATMOSPHERIC ADMINISTRATION
NATIONAL OCEAN SERVICE
OFFICE OF COAST SURVEY

S-F942-NRT5-18, D00254
Morehead City, North Carolina
Morehead City and Beaufort

REMARKS:
- Depths in Feet
- Additional data and products for this survey available <http://www.nce.noaa.gov>
- Isolated features such as rocks, wrecks and obstructions are not portrayed on this product
- Read attached D00254_read.me.txt for additional information