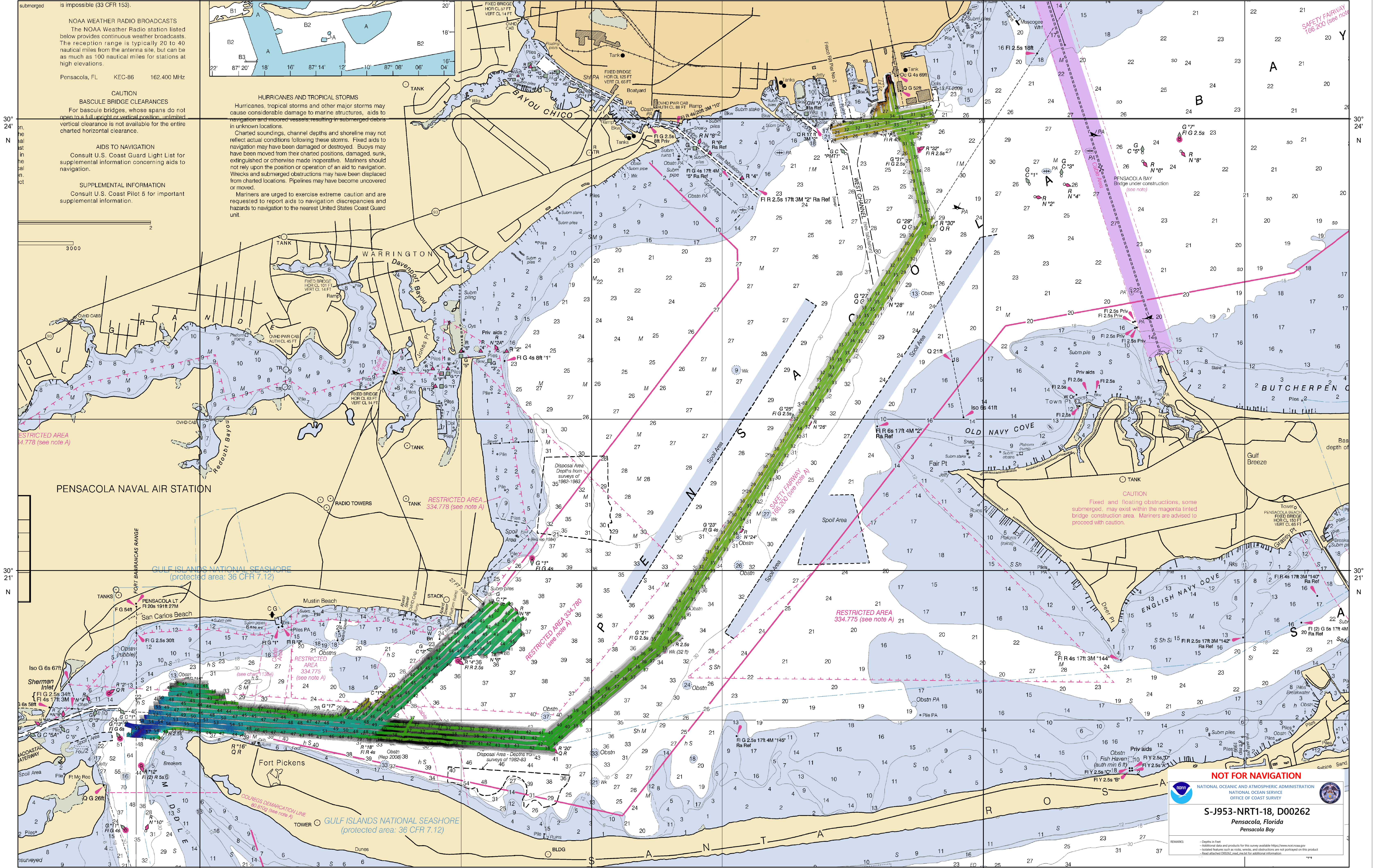


87°18'W

87°15'W

87°12'W



submerged is impossible (33 CFR 153).

**NOAA WEATHER RADIO BROADCASTS**  
 The NOAA Weather Radio station listed below provides continuous weather broadcasts. The reception range is typically 20 to 40 nautical miles from the antenna site, but can be as much as 100 nautical miles for stations at high elevations.

Pensacola, FL KEC-86 162.400 MHz

**CAUTION BASCULE BRIDGE CLEARANCES**  
 For bascule bridges, whose spans do not open to a full upright or vertical position, unlimited vertical clearance is not available for the entire charted horizontal clearance.

**AIDS TO NAVIGATION**  
 Consult U.S. Coast Guard Light List for supplemental information concerning aids to navigation.

**SUPPLEMENTAL INFORMATION**  
 Consult U.S. Coast Pilot 5 for important supplemental information.

**HURRICANES AND TROPICAL STORMS**  
 Hurricanes, tropical storms and other major storms may cause considerable damage to marine structures, aids to navigation and moored vessels, resulting in submerged debris in unknown locations.

Charted soundings, channel depths and shoreline may not reflect actual conditions following these storms. Fixed aids to navigation may have been damaged or destroyed. Buoys may have been moved from their charted positions, damaged, sunk, extinguished or otherwise made inoperative. Mariners should not rely upon the position or operation of an aid to navigation. Wrecks and submerged obstructions may have been displaced from charted locations. Pipelines may have become uncovered or moved.

Mariners are urged to exercise extreme caution and are requested to report aids to navigation discrepancies and hazards to navigation to the nearest United States Coast Guard unit.

**SAFETY FAIRWAY**  
 166-200 (see note A)

**RESTRICTED AREA**  
 4.773 (see note A)

**RESTRICTED AREA**  
 334.778 (see note A)

**RESTRICTED AREA**  
 334.780 (see note A)

**RESTRICTED AREA**  
 334.775 (see note A)

**CAUTION**  
 Fixed and floating obstructions, some submerged, may exist within the magenta limited bridge construction area. Mariners are advised to proceed with caution.

**NOT FOR NAVIGATION**

NATIONAL OCEANIC AND ATMOSPHERIC ADMINISTRATION  
 NATIONAL OCEAN SERVICE  
 OFFICE OF COAST SURVEY

**S-J953-NRT1-18, D00262**  
 Pensacola, Florida  
 Pensacola Bay

REMARKS:  
 - Depths in feet  
 - Additional data and products for this survey available: <https://www.nce.noaa.gov>  
 - Isolated features such as rocks, wrecks, and obstructions are not portrayed on this product  
 - Best-attached D00262.mxd.mxd for additional information.

87°18'W

87°15'W

87°12'W

30° 24' N

30° 21' N

30° 24' N

30° 21' N