

FE 199

Diagrams 1278 & 1279

NOAA FORM 76-35A

U.S. DEPARTMENT OF COMMERCE
NATIONAL OCEANIC AND ATMOSPHERIC ADMINISTRATION
NATIONAL OCEAN SURVEY

DESCRIPTIVE REPORT (HYDROGRAPHIC)

Type of Survey ... Field Examination
Field No. HY-20-1-64
Office No. FE-199 (1964)

LOCALITY

State Louisiana
General Locality ... Gulf Coast
Locality Calcasieu Pass

1964

CHIEF OF PARTY
V.R. Sobieralski

LIBRARY & ARCHIVES

DATE April 5, 1965

☆ U.S. GOV. PRINTING OFFICE: 1976-669-441

NOTE: A new system for registering Field Examinations (FE's) was established in 1980. All FE's are now consecutively numbered as shown hereon. The date shown in the new format is the actual date of survey. This material was previously registered as;

FE No.2 1965

FE 199

F E No. 2 1965

FE-199

Diag. Cht. Nos. 1278 and 1279.

Form 504 U. S. DEPARTMENT OF COMMERCE COAST AND GEODETIC SURVEY DESCRIPTIVE REPORT	
Type of Survey	HYDROGRAPHIC
Field No. HY-20-1-64	Office No. F.E.No.2 (1965)
LOCALITY	
State	LOUISIANA
General locality	GULF COAST
Locality	CALCASTIEU PASS
19 64	
CHIEF OF PARTY	
V. RALPH SOBIERALSKI, CDR, USC&GS	
LIBRARY & ARCHIVES	
DATE	APR 5 1965

USCOMM-DC 5087

F E No. 2
1965

7-10632

HYDROGRAPHIC TITLE SHEET

FE 2 (1965)

INSTRUCTIONS - The Hydrographic Sheet should be accompanied by this form, filled in as completely as possible, when the sheet is forwarded to the Office.

FIELD NO.

HY-20-1-64

State Louisiana

General locality Gulf Coast

Locality Calcasieu Pass

Scale 1:20,000 Date of survey September 18, 19, 20 & October 6, 1964

Original Instr. dtd 5/15/62, Supp. Instr. dtd _____

Instructions dated 7/15/63, Rev. Instr. dtd 8/9/63, Project No. _____

Supp. Instr. dtd 3/27/64, Proj. Letter dtd 5/12/64, Supp. Instr. dtd 8/13/64

Vessel Launch HY-1

Chief of party V. Ralph Sobieralski

Surveyed by S. J. Ruden, W. Y. S. Williams

Soundings taken by echo sounder, ~~and by~~ DE-723 Serial 555

Graphic record scaled by Ship Personnel

Graphic record checked by Ship Personnel

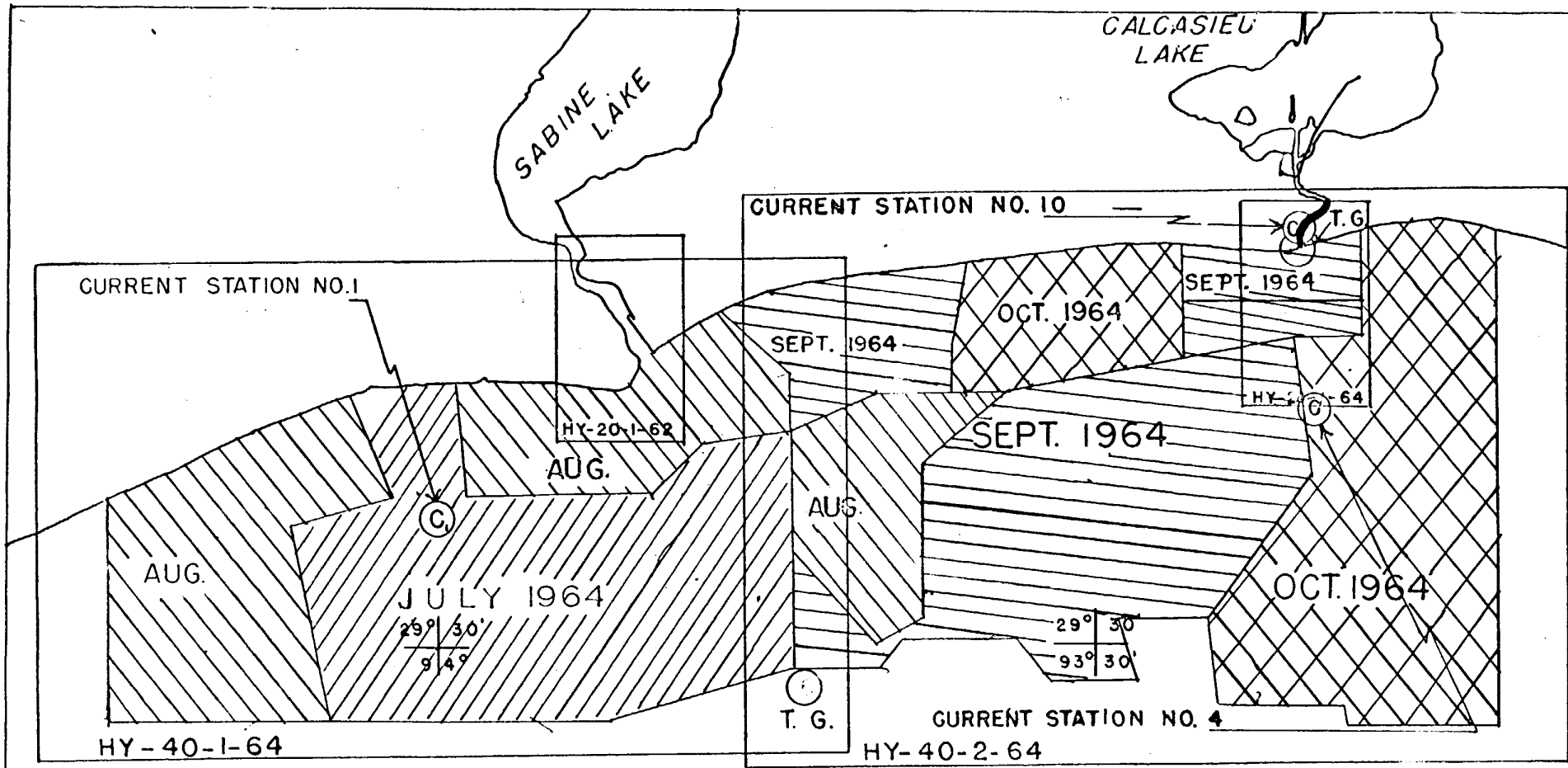
Protracted by W. Y. S. Williams

Soundings penciled by W. Y. S. Williams

Soundings in ~~XXXXXX~~ feet at MLW ~~XXXXXX~~

REMARKS: This survey is a channel survey using three point sextant fixes for control.

All data recorded in sounding volumes during 1964 field season.



1964 PROGRESS SKETCH
 USC&GSS HYDROGRAPHER
 GULF OF MEXICO
 PROJECT OPR-427
 COMBINED OPERATION
 TEXAS - LOUISIANA
 JULY 13 - OCT. 23
 V.R. SOBIERALSKI, CDR, COM'D'G.
 SCALE OF C&GS CHART 1116

DESCRIPTIVE REPORT

TO ACCOMPANY

HYDROGRAPHIC SURVEY (HY-20-1-64)

1964

USC&GS SHIP HYDROGRAPHER - LAUNCH HY-1

SCALE 1:20,000

V. RALPH SOBIERALSKI, CDR, USC&GS

CHIEF OF PARTY

A. PROJECT

This survey was accomplished under Project OPR-427, Sabine Bank, Texas - Louisiana. Original Instructions dated May 15, 1962; Supplemental Instructions dated July 15, 1963; Revised Instructions dated August 9, 1963; Supplemental Instructions dated March 27, 1964; Project Instructions Letter dated May 12, 1964; Supplemental Instructions dated August 13, 1964.

B. AREA SURVEYED

This survey covers an area from jetty entrance to Calcasieu Pass, Latitude 29°44.6' North, Longitude 93°20.4' West, up the pass to Latitude 29°48.1' North, Longitude 93°20.8' West, and the Old Calcasieu River, between Monkey Island and Cameron.

All hydrography was accomplished during the period September 18 through October 6, 1964.

This survey junctions with prior survey H-4365 scale 1:40,000, 1923-24, and overlaps prior survey H-5334 scale 1:10,000, 1933, and junctions and overlaps with prior survey H-4372 scale 1:40,000, 1924.

This survey joins contemporary survey H-8796 (Field No. HY-40-2-64) to the south.

C. SOUNDING VESSEL

All hydrography on this survey was accomplished by Launch HY-1.

DESCRIPTIVE REPORT - HYDROGRAPHIC SURVEY (HY-20-1-64) - LAUNCH HY-1
USC&GS SHIP HYDROGRAPHER - 1964 - cont'd.

D. SOUNDING EQUIPMENT ✓

All hydrography was in a depth of less than 55 feet using the Raytheon Survey Fathometer, Model DE-723, Serial Number 555. The initial setting on the echo sounder was maintained at 0.0 throughout the entire survey.

Depths encountered ranged from 3 feet to 55 feet.

Corrections to echo soundings were determined as follows:

- (a) Depth corrections were derived from bar checks made twice daily - at the beginning and end of each day
- (b) Settlement & Squat corrections were determined from tests made on September 1, 1964
- (c) DE-723 Phase corrections were derived from phase comparisons made in the channel

E. SMOOTH SHEET ✓

The smooth sheet has been plotted by one of the ship's officers. The projection was constructed by the Washington Office and checked by ship's officers. To comply with Paragraph 6-4 of the Hydrographic Manual, the original projection limit of the sheet was moved down 1' of latitude. Otherwise soundings would have been plotted on the margin of the sheet.

F. CONTROL ✓

All control on this survey was by sextant fixes. Control was established by photogrammetric methods. Natural objects and signals built by the Photogrammetry Party were used. Refer to T-Sheet T-10632.

G. SHORELINE ✓

A shoreline was run along both banks of Calcasieu Pass and of the Old Calcasieu River. (See RS 810) (bp. 64557)

DESCRIPTIVE REPORT - HYDROGRAPHIC SURVEY (HY-20-1-64) - LAUNCH HY-1

USC&GS SHIP HYDROGRAPHER - 1964 - cont'd.

H. CROSSLINES ✓

Approximately 14% of all sounding lines were run as crosslines. All crossings are in good agreement.

I. JUNCTIONS ✓

No junctions were made with the contemporary survey as the survey terminated at the entrance to Calcasieu Pass.

J. COMPARISON WITH PRIOR SURVEYS ✓

No comparison could be made with prior surveys due to the complete alteration of the area involved since 1933.

K. COMPARISON WITH CHARTS ✓

Comparison was made with C&GS Chart 591, 3rd Edition, Sept. 5, 1944, Revised July 22, 1963, indicating generally good agreement with one notable exception: the channel to the north of Monkey Island, which has a charted depth of 12 feet, has filled in to a depth of 10 feet from Longitude 93°20.7' West to Longitude 93°23.2' West. Beyond that, to the eastward, the channel is at its charted depth.

L. ADEQUACY OF SURVEY ✓

This survey is complete and adequate to supersede prior surveys of the area for charting.

M. AIDS TO NAVIGATION ✓

The entrance range lights shown on the chart have been relocated. The new location of these structures is as follows:

Calcasieu Pass Entrance Front Range Light -	Latitude	29°46'45.035"N.
	Longitude	93°20'48.002"W.
Calcasieu Pass Entrance Rear Range Light -	Latitude	29°47'14.464"N.
	Longitude	93°20'52.867"W.
Calcasieu Pass Light No. 52 -----	Latitude	29°46'37.222"N.
	Longitude	93°20'39.824" W.

DESCRIPTIVE REPORT - HYDROGRAPHIC SURVEY (HY-20-1-64) - LAUNCH HY-1
USC&GS SHIP HYDROGRAPHER - 1964 - cont'd.

For further information regarding aids to navigation refer to "Report On Landmarks For Charts And Fixed Aids To Navigation - OPR-427 (Sabine Bank, Texas - Louisiana) 1964, USC&GS Ship HYDROGRAPHER."

N. STATISTICS

Number of Positions -----	299
Miles of Sounding Line -----	46.4
Area in Square Nautical Miles -----	2
Number of Bottom Samples -----	13

Within the area of this survey one Current Station (No. 10) was observed - Position - Latitude 29°46.4' North, Longitude 93°20.7' West.

O. MISCELLANEOUS

The corrections to echo soundings were entered in the sounding volumes in the following manner:

Under the columns with the heading "CORRECTIONS"

Left Column - Velocity (Bar Check) corrections

Center Column - Tide Reducer corrections

Right Column - Settlement & Squat corrections

The Initial Correction remained at 0.0 throughout the survey and is entered at the top of each page.

Within the area of this survey there is a mud slush layer that may be detected by hand lead. Gain and stylus needle length settings on the echo sounder are especially critical because of this condition. Gain checks were made to determine the proper gain settings.

P. RECOMMENDATION

A larger scale boatsheet would have provided for a more complete survey in that a greater number of soundings would have been plotted giving a better delineation of bottom contours.

DESCRIPTIVE REPORT - HYDROGRAPHIC SURVEY (HY-20-1-64) - LAUNCH HY-1
USC&GS SHIP HYDROGRAPHER - 1964 - cont'd.

Q. REFERENCES TO REPORTS

The reports listed below are necessary for a complete evaluation and understanding of this survey and have been submitted to the Washington Office:

<u>Title of Report</u>	<u>Date Forwarded</u>
Report on Corrections to Echo Soundings, 1964 Field Season, Project OPR-427, Sabine Bank, Texas - Louisiana	
Report on Landmarks for Charts and Fixed Aids to Navigation, OPR-427, Sabine Bank, Texas - Louisiana	2/2/65
Season's Report, USC&GS Ship HYDROGRAPHER 1964 Field Season	1/19/65

Submitted:

William J. S. Williams
William J. S. Williams, LTJG, USC&GS

Approved and Forwarded: MAR 11 1965

Ralph Sobieralski
V. Ralph Sobieralski, CDR, USC&GS

DESCRIPTIVE REPORT - HYDROGRAPHIC SURVEY (HY-20-1-64) - LAUNCH HY-1
USC&GS SHIP HYDROGRAPHER - 1964 - cont'd.

SIGNAL NAMES

<u>Signal Name</u>	<u>T-Sheet or Triangulation</u>
AMY	T-10632
BOX	T-10632
CAL	R BN CALCASIEU, 1955
DUO	T-10632
EGG	T-10632
FOP	T-10632
FRY	T-10632
GAG	T-10632
HAG	T-10632
HUG	T-10632
IDA	T-10632
ITS	T-10632
JAP	T-10632
JUG	T-10632
LIZ	T-10632
NUT	T-10632
NIT	T-10632
ORA	T-10632
QUO	T-10632
ROT	T-10632
SUE	T-10632
THY	T-10632
USE	T-10632
WOO	T-10632
YAK	T-10632

DESCRIPTIVE REPORT - HYDROGRAPHIC SURVEY (HY-20-1-64) - LAUNCH HY-1
USC&GS SHIP HYDROGRAPHER - 1964 - cont'd.

INDEX OF BOTTOM SAMPLES

LAUNCH HY-1

<u>Day Number</u>	<u>Date</u>	<u>Position Number</u>	<u>Volume</u>
280	October 6	300	II
280	October 6	301	II
280	October 6	303	II
280	October 6	304	II
280	October 6	305	II
280	October 6	306	II
280	October 6	307	II
280	October 6	309	II
280	October 6	310	II
280	October 6	311	II
280	October 6	312	II

DESCRIPTIVE REPORT - HYDROGRAPHIC SURVEY (HY-20-1-64) - LAUNCH HY-1

USC&GS SHIP HYDROGRAPHER - 1964 - cont'd.

VELOCITY CORRECTIONS

ABSTRACT OF BAR CHECKS

All entries in feet.

September 18, 19, 20

<u>Depth</u>	<u>Correction</u>
3.5 to 3.8	0.0
3.9 to 4.0	+ 0.1
4.1 to 4.2	+ 0.2
4.3 to 4.6	+ 0.3
4.7 to 5.0	+ 0.4
5.1 to 5.4	+ 0.5
5.5 to 6.0	+ 0.6
6.1 to 6.7	+ 0.7
6.8 to 7.5	+ 0.8
7.6 to 8.6	+ 0.9
8.7 to 9.7	+ 1.0
9.8 to 11.2	+ 1.1
11.3 to 12.9	+ 1.2
13.0 to 15.0	+ 1.3
15.1 to 17.6	+ 1.4
17.7 to 19.5	+ 1.5
19.6 to 21.2	+ 1.6
21.3 to 22.9	+ 1.7
23.0 to 24.5	+ 1.8
24.6 to 26.9	+ 1.9
27.0 to 30.0	+ 2.0
30.1 to 34.2	+ 2.1
34.3 to 40.5	+ 2.2
40.6 to 48.0	+ 2.3
48.1 to 58.8	+ 2.4

DESCRIPTIVE REPORT - HYDROGRAPHIC SURVEY (HY-20-1-64) - LAUNCH HY-1
USC&GS SHIP HYDROGRAPHER - 1964 - cont'd.

TIDE NOTE

Field No. HY-20-1-64

Tide Station: Calcasieu Pass, La. (Portable Gage)
 (Hydrographic Signal - THY)
 Latitude 29°45.5' North
 Longitude 93°20.7' West

Plane of Reference: MLW

Time Meridian: 90° West

Time Correction: None

Height Correction: None

Area Covered: Entire area of Boatsheet HY-20-1-64

An abstract of tide corrections is appended to this report.

A copy of Chief, Marine Data Division memorandum 2321-19-CSS 4 dated January 26, 1965 and Form 362 Tides: Hourly Heights, listing the final tide reducers is also appended to this report.

DESCRIPTIVE REPORT - HYDROGRAPHIC SURVEY (HY-20-1-64) - LAUNCH HY-1

USC&GS SHIP HYDROGRAPHER - 1964 - cont'd.

ABSTRACT OF TIDE CORRECTIONS

September 18

September 19

<u>From</u>	<u>To</u>	<u>Correction</u>	<u>From</u>	<u>To</u>	<u>Correction</u>
0700	- 0710	- 1.8 (ft)	0700	- 0840	- 1.7 (ft)
0711	- 0800	- 1.7	0841	- 0912	- 1.8
0801	- 0855	- 1.6	0913	- 0940	- 1.9
0856	- 0925	- 1.7	0941	- 1005	- 2.0
0926	- 0955	- 1.8	1006	- 1038	- 2.1
0956	- 1020	- 1.9	1039	- 1115	- 2.2
1021	- 1050	- 2.0	1116	- 1300	- 2.3
1051	- 1125	- 2.1	1301	- 1325	- 2.2
1126	- 1235	- 2.0	1326	- 1350	- 2.1
1236	- 1315	- 1.9	1351	- 1405	- 2.0
1316	- 1340	- 1.8	1406	- 1423	- 1.9
1341	- 1400	- 1.7	1424	- 1438	- 1.8
1401	- 1420	- 1.6	1439	- 1455	- 1.7
1421	- 1438	- 1.5	1456	- 1508	- 1.6
1439	- 1455	- 1.4	1509	- 1525	- 1.5
1456	- 1505	- 1.3	1526	- 1540	- 1.4
1506	- 1520	- 1.2	1541	- 1555	- 1.3
1521	- 1532	- 1.1	1556	- 1610	- 1.2
1533	- 1542	- 1.0	1611	- 1625	- 1.1
1543	- 1555	- 0.9	1626	- 1640	- 1.0
1556	- 1605	- 0.8	1641	- 1656	- 0.9
1606	- 1618	- 0.7	1657	- 1710	- 0.8
1619	- 1627	- 0.6	1711	- 1725	- 0.7
1628	- 1640	- 0.5	1726	- 1740	- 0.6
1641	- 1655	- 0.4	1741	- 1755	- 0.5
1656	- 1720	- 0.3	1756	- 1810	- 0.4
1721	- 1840	- 0.2	1811	- 1835	- 0.3
1841	- 1905	- 0.3	1836	- 1930	- 0.2
1906	- 1930	- 0.4	1931	- 1950	- 0.3

DESCRIPTIVE REPORT - HYDROGRAPHIC SURVEY (HY-20-1-64) - LAUNCH HY-1
USC&GS SHIP HYDROGRAPHER - 1964 - cont'd.

Abstract of Tide Corrections (cont'd.)

September 20

<u>From</u>	<u>To</u>	<u>Correction</u>
0600	- 0630	- 1.8 (ft)
0631	- 0705	- 1.7
0706	- 0835	- 1.6
0836	- 0920	- 1.7
0921	- 0950	- 1.8
0951	- 1015	- 1.9
1016	- 1035	- 2.0
1036	- 1055	- 2.1
1056	- 1116	- 2.2
1117	- 1137	- 2.3

Memorandum

TO : The Commanding Officer
USC&GSS HYDROGRAPHER
P.O. Box 1259
St. Petersburg, Florida 33731

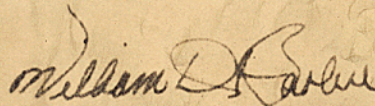
DATE: January 26, 1965

In reply refer to: 2321-19-CSS 4

FROM : Chief, Marine Data Division

SUBJECT: Calcasieu Pass, La. tide reducers

Enclosed are tide reducers for Calcasieu Pass, La.
for dates requested, September 18, 19, 20, 1964.


William D. Barbee

Enclosures

PORTABLE

Form 302
24 May 1956
U. S. DEPARTMENT OF COMMERCE
COAST AND GEODETIC SURVEY

TIDES: HOURLY HEIGHTS

Station: CALCASIEU PASS LA. Year: 1964
 Observer: USCGSS HYDROGRAPHER Lat. 29°45.5'N. Long. 93°20.7'W.
 Time Meridian: 90°W Height datum is MLW which is _____ ft. below B. M.

Month and Day	mo. d.		d.		d.		d.		d.		Horizontal Sum
	SEPT. 18		SEPT. 19		SEPT. 20						
Day of Series											
Hour	Feet		Feet		Feet		Feet		Feet		Feet
0	2.7	.	2.5	.	2.6
1	2.7	.	2.7	.	2.8
2	2.7	.	2.8	.	2.8
3	2.8	.	2.9	.	2.7
4	2.6	.	2.8	.	2.7
5	2.6	.	2.6	.	2.5
6	2.3	.	2.3	.	2.3
7	2.3	.	2.1	.	2.1
8	2.0	.	2.1	.	2.0
9	1.9	.	2.2	.	2.1
10	2.3	.	2.5	.	2.3
11	2.4	.	2.6	.	2.7
Noon	2.4	.	2.8	.	2.7
13	2.0	.	2.6	.	2.7
14	2.2	.	2.4	.	2.5
15	1.8	.	2.0	.	2.3
16	1.3	.	1.5	.	1.9
17	0.7	.	1.1	.	1.6
18	0.5	.	0.8	.	1.2
19	0.8	.	0.6	.	1.1
20	1.1	.	0.8	.	1.0
21	1.3	.	1.3	.	1.5
22	1.9	.	1.7	.	1.9
23	2.3	.	2.2	.	2.0
Sum					- 13 -						

Sum for _____ = Divisor = (28d) 672; (29d) 696; (30d) 720; (31d) 744. Mean for month = _____

Tabulated by SCB Date 1/26/65 Summed by _____ Date _____

USCOMM-DC 6713-P64

Memorandum

TO : Commanding Officer
USC&GSS HYDROGRAPHER

FROM : Chief, Operations Division

SUBJECT: Registry numbers, OPR-427, request for

DATE: October 23, 1964

In reply refer to: WSC-211

In compliance with your request of October 20, 1964, registry number H-8795 has been assigned HY-40-1-64, and number H-8796 assigned to HY-40-2-64, Sabine Bank, Texas.

It is requested processing be completed on HY-20-1-64, Sabine Pass, and sheet submitted to the Washington Office before assignment of registry number.

Calcasieu

Horace G. Conerly
Horace G. Conerly

FEZ (65)



APPROVAL SHEET

Field No. HY-20-1-64

The smooth sheet and all accompanying records, as submitted to the Washington Office, have been reviewed and are approved.

The survey is complete and adequate for charting purposes.

V. Ralph Sobieralski

V. Ralph Sobieralski, CDR, USC&GS
Commanding Officer
USC&GS Ship HYDROGRAPHER

APR 25 1966

TIDE NOTE FOR HYDROGRAPHIC SHEET

Nautical Chart Division:

Plane of reference approved in
2 volumes of sounding records for

HYDROGRAPHIC SHEET FE 2 1965

Locality: Calcasieu Pass, Louisiana

Chief of Party: V. R. Sobieralski in 1964

Plane of reference is mean low water

Tide Station Used (Form C&GS-681):

Calcasieu Pass (West Jetty)

Height of Mean High Water above Plane of Reference is as follows:

2.3 feet

Remarks

L. C. Wharton

for/ Chief, Tides and Currents Branch

HYDROGRAPHIC SURVEY STATISTICS
HYDROGRAPHIC SURVEY NO. F.E.No. 2--1965

RECORDS ACCOMPANYING SURVEY: To be completed when survey is registered.

RECORD DESCRIPTION		AMOUNT	RECORD DESCRIPTION		AMOUNT	
SMOOTH SHEET		1	BOAT SHEETS		1	
DESCRIPTIVE REPORT		1	OVERLAYS			
DESCRIPTION	DEPTH RECORDS	HORIZ. CONT. RECORDS	PRINTOUTS	TAPE ROLLS	PUNCHED CARDS	ABSTRACTS/SOURCE DOCUMENTS
ENVELOPES	3					
CAHIERS	2					
VOLUMES						
BOXES						
T-SHEET PRINTS (List)						
SPECIAL REPORTS (List)						

OFFICE PROCESSING ACTIVITIES

The following statistics will be submitted with the cartographer's report on the survey

PROCESSING ACTIVITY	AMOUNTS			
	PRE-VERIFICATION	VERIFICATION	REVIEW	TOTALS
POSITIONS ON SHEET				299
POSITIONS CHECKED				75
POSITIONS REVISED				0
DEPTH SOUNDINGS REVISED				15
DEPTH SOUNDINGS ERRONEOUSLY SPACED				0
SIGNALS ERRONEOUSLY PLOTTED OR TRANSFERRED				0
	TIME (MANHOURS)			
TOPOGRAPHIC DETAILS				5
JUNCTIONS				0
VERIFICATION OF SOUNDINGS FROM GRAPHIC RECORDS				2
SPECIAL ADJUSTMENTS				3
ALL OTHER WORK				30
TOTALS				40
PRE-VERIFICATION BY		BEGINNING DATE		ENDING DATE
VERIFICATION BY		BEGINNING DATE		ENDING DATE
REVIEW BY		BEGINNING DATE		ENDING DATE

Lewis M. Taylor
Lewis M. Taylor

3/21/66 3/25/66
3/28/66 4/4/66

Field Examination No. 2, 1965
Louisiana Gulf Coast
Calcasieu Pass

1. The field examination was made in compliance with instructions for Project OPR-427, original instructions dated 5/15/62, supplemental instructions dated 8/13/64.
2. The purpose of the examination was to show basic hydrography in the southern part of Calcasieu Channel from the jetty entrance up the pass to Lat. $29^{\circ}48.1'$, Long. $93^{\circ}20.8'$, and the old Calcasieu River between Monkey Island and Cameron.
3. The results of the examination are shown on the accompanying smooth sheet.
4. A comparison between the field examination and Chart 591 4th edition May 3, 1965 reveals maximum differences of 5 ft. with 2 prior depths obtained in the old Calcasieu River. The charted hydrography originates largely with the Boat Sheet HY-20-1-64 BP 67033, and will be superseded by application of the present survey. Only minor differences are noted between the boat sheet and smooth sheet soundings. The 6-ft sounding charted approximately Lat. $93^{\circ}19.8'$, Long. $29^{\circ}49.8'$ is a hand correction from the penciled smooth sheet and was revised in position during verification.

The charted hydrography in the Calcasieu Channel shows a controlling depth of 34 ft. and is in agreement with the present field examination.

Attention is directed to the following items:

- a. The island charted in the vicinity of Lat. $29^{\circ}47.0'$, Long. $93^{\circ}19.8'$ was not found by the hydrographer during the field examination, nor does it appear on the photo revision, R 5-810, of the surveyed area. It is recommended that this feature be removed from the next printing of the chart.

- b. The charted shoreline originates with air photographs 61S-4544-4558 dated September 1961. Only minor differences are noted with revision survey RS-810 (Bp 64557 dated July 1963), the source of the present survey shoreline.

The Descriptive Report covers all other matters pertaining to this examination. No further discussion is considered necessary.

Reviewed by - D. M. Taylor

4/4/66

R. H. Carstens

Inspected by - R. H. Carstens

Approved by:

D. M. Taylor

Chief Marine Charts Division

93° 20'

29° 48'

CAMERON

JUG
(TANK)
(landmark)
148H)

MONKEY ISLAND

29° 47'

RBN, CALCASIEU, 1955
(landmark)

29° 46'

No. 42	HYDROGRAPHIC SURVEY	
Field No.	HY-20-1-64	Reg. No. FE.No2(1965)
Scale 1:	20,000	Plotted: Vertical
Projection	PJD, WYSW	
Tri. Sta.	WYSW	
Topo. Sta.	WYSW	
Hydro. Sta.		
Datum	NORTH AMERICAN 1927	
Ref. Sta.	RBN CALCASIEU, 1955	
Lat.	29° 46' 12.74	46
Long.	93° 20' 90.47	W. Time

29° 45'

F. E. No. 2 (1965)
LOUISIANA
GULF COAST
CALCASIEU PASS

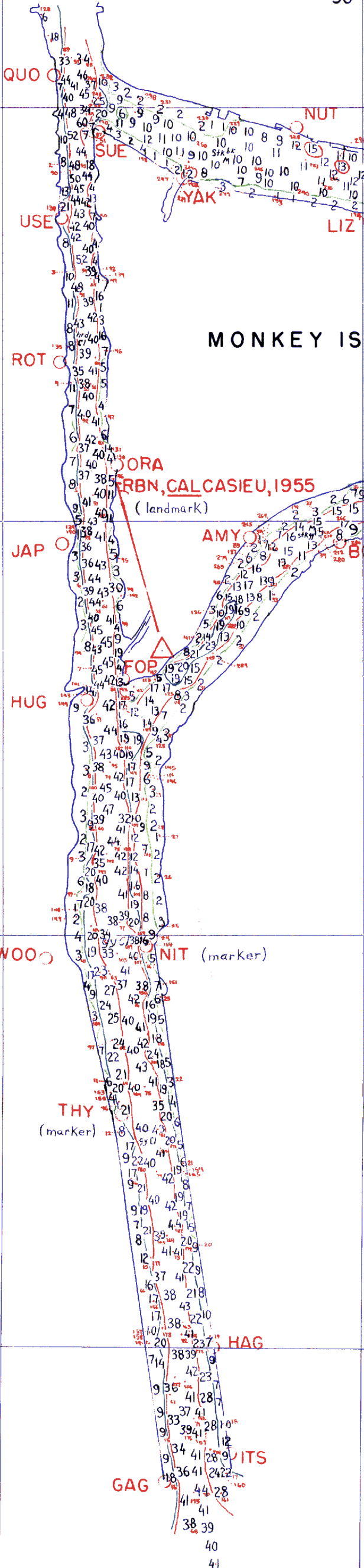
Date of Survey Sept. - Oct. 1964
 Chief of Party V. R. Sobieralski
 Surveyed by S. J. Ruden & W. Y. S. Williams

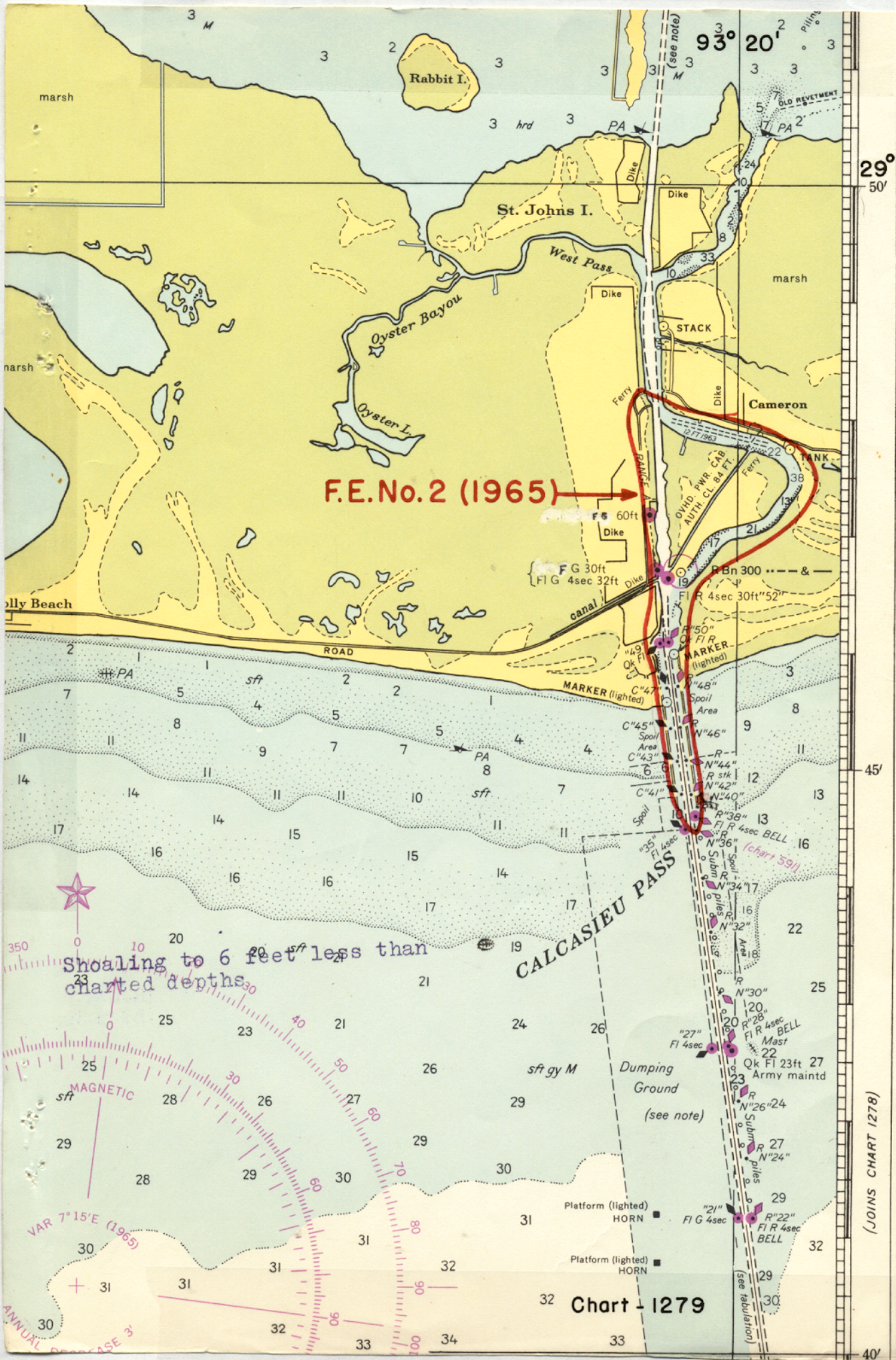
29° 44'

Soundings in feet at MLW

29° 43'

93° 20'





F.E.No.2 (1965)

Shoaling to 6 feet less than charted depths

MAGNETIC
VAR 7° 15' E (1965)

Chart - 1279

(JOINS CHART 1278)

