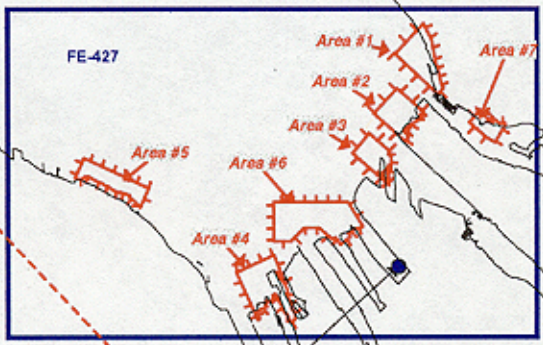


**Final Zoning for  
OPR N903-PHP-96  
Tacoma, WA**

**Zone PS12  
Time Corrector 0 mins  
Range Corrector X 1.00  
Reference Station 9446484**



**9446484 TACOMA, COMMENCEMENT BAY**

## Tide Correctors ✓

In compliance with Section 5.8 of the Project Instructions a tide station was established to provide information on zoning, tidal datums (reducers), and harmonic constants for predictions. A real time portable acoustic gauge was installed by Pacific Operations Section at the following station:

<u>Station #</u>	<u>Station Name</u>	<u>Latitude</u>	<u>Longitude</u>	
944-6484	Tacoma	47°16.0"N	122°24. <sup>75'</sup> W	Newly established site

---

The operating tide stations at Seattle, WA (944-7130), will serve as control for datum determination at the subordinate station.

Unprocessed data from the Seattle gauges (raw water levels above or below mean lower low water) were acquired and entered into predicted tide tables with the following correctors:

Time Corrector

+6 minutes

Range Ratio

x1.05

This data was applied to the soundings during processing using the HDAPS Reapply program. Approved Tide Note dated March 14, 1997 is attached.