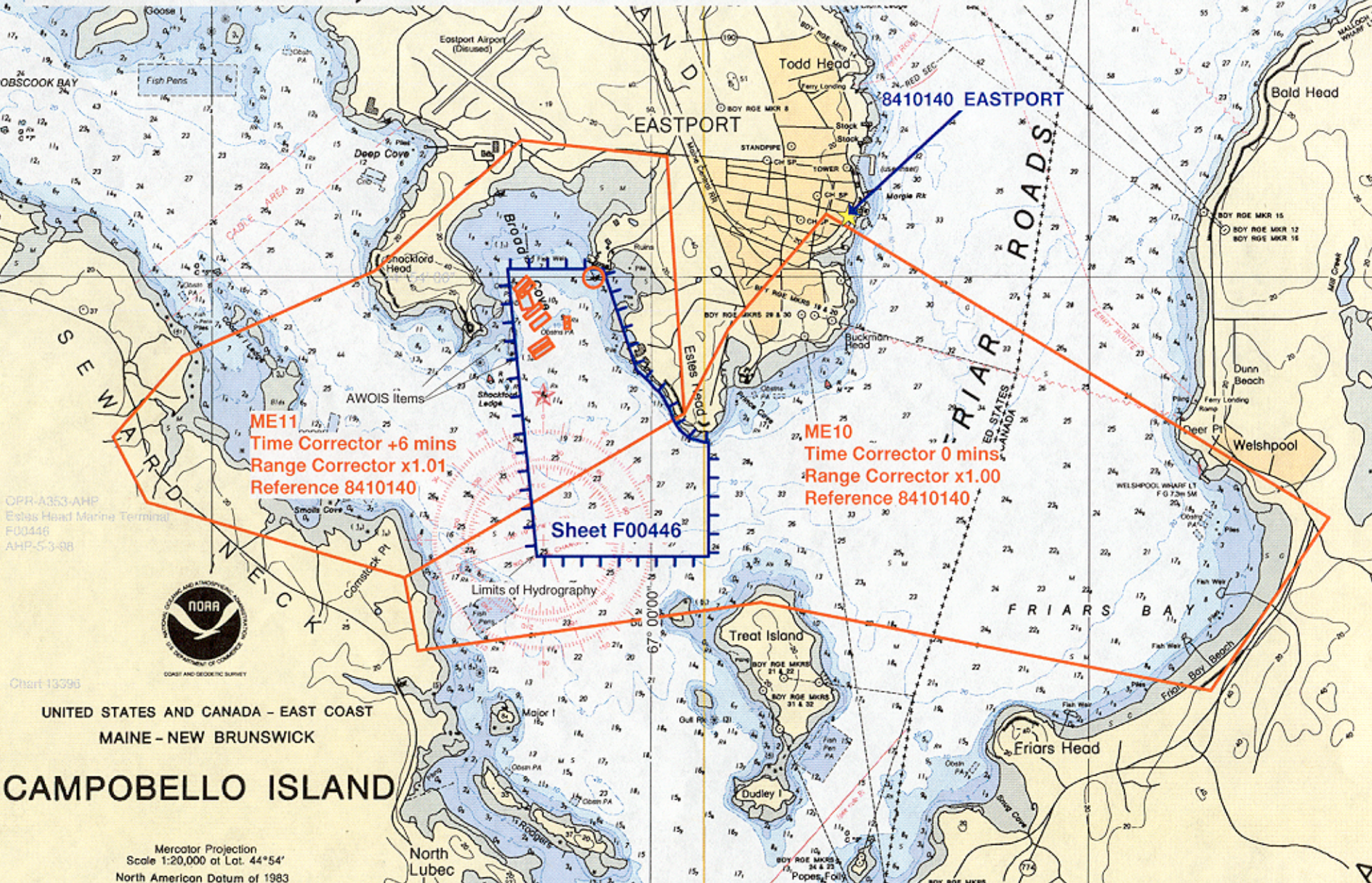


Final Zoning for OPR A353-AHP-98 Eastport, ME, Marine Terminal, Estes Head - Sheet F00446



OPR-A353-AHP
Estes Head Marine Terminal
F00446
AHP-53-98



Chart 1339B
UNITED STATES AND CANADA - EAST COAST
MAINE - NEW BRUNSWICK

CAMPOBELLO ISLAND

Mercator Projection
Scale 1:20,000 at Lat. 44°54'
North American Datum of 1983

The Eastport, ME tide station No. 841-0140 served as control for datum determination. Unverified actual water level heights from this gauge were downloaded from the NOAA web site (<http://www.opsd.nos.noaa.gov/ftp/pwldata.html>) and used for correcting the soundings for this survey. This station is also the reference station for the predicted tides. This survey required two tide zones. A time corrector of zero minutes and a range corrector ratio of x1.00 in zone ME 10, and a time corrector of +6 minutes and a range corrector ratio of x1.01 in zone ME 11 were applied to the actual tides for the reference station.

Approved tides were requested from the Requirements and Engineering Branch, N/CS41, in a letter dated January 5, 1999. *A copy of the letter is appended to this report.

Approved tides and zoning have been applied during office processing.