

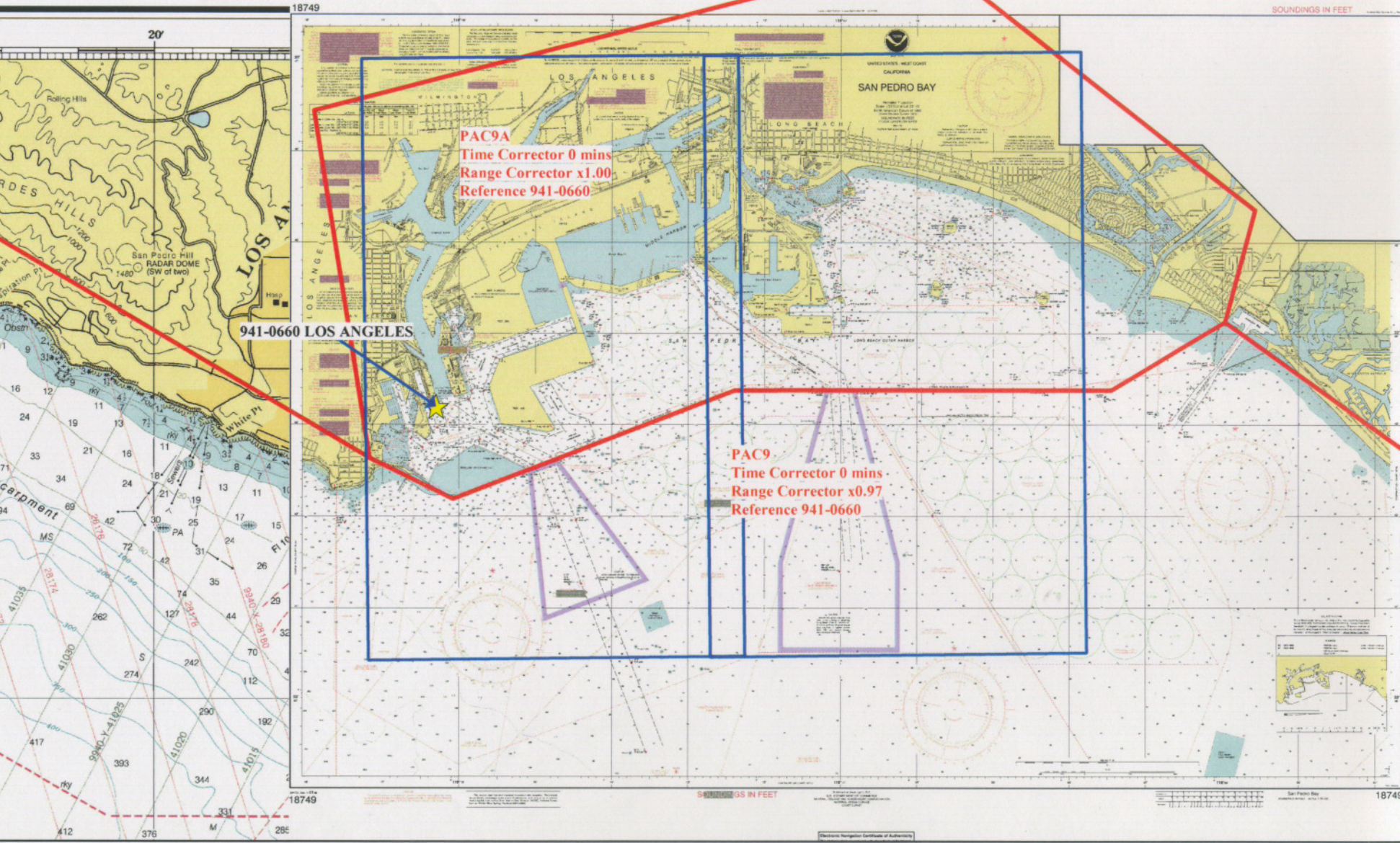
# Final Tidal Zoning for OPR-L418-NRB-2002

## Los Angeles and Long Beach, CA

the points involved. They have been designed to aid in the prevention of collisions at line approaches to major harbors and along heavily traveled coastal waters, but are not intended in any way to supersede or to alter the applicable Rules of the Road. Separation zones are intended to separate inbound and outbound traffic and to be free of ship traffic. Separation zones should not be used except for crossing purposes. When crossing traffic lanes and separation zones use extreme caution. The normal Pilot Operating Areas are outlined by trapezoidal magenta bands recommended that vessels

**NOTE D**  
**VESSEL TRAFFIC MANAGEMENT SYSTEM (VTMS)**  
 The Vessel Traffic Service of Los Angeles - Long Beach, jointly operated by the U.S. Coast Guard and Marine Exchange, has been established within the approaches to San Pedro Bay. The working frequency for the VTS is channel 14 "F"/FM (156.7 MHz) and the call sign is "San Pedro Traffic." Upon entering the VTS area, within a 25 nautical mile radius of Pt. Fermin (LAT 33°42.3'N, LONG 118°17.6'W), all inbound vessels shall report on channel 14 their vessel name, call sign, position, course and speed, destination, estimated time of arrival to their destination and whether or not their vessel will be taking on a pilot. Outbound vessels shall report 15 minutes prior to reaching the breakwater to obtain information on the movement of deep draft vessels inside the Federal Breakwater contact the Los Angeles Pilot Station on channel 22 (156.575 MHz) or (156.770/565 MHz) of Long Beach.

**NOTICE**  
 Navigation regulations are published in the Notice to Mariners. Regulations may be obtained at the 11th Coast Guard District Office of the District Engineer, San Pedro, California.



**PAC9A**  
 Time Corrector 0 mins  
 Range Corrector x1.00  
 Reference 941-0660

941-0660 LOS ANGELES

**PAC9**  
 Time Corrector 0 mins  
 Range Corrector x0.97  
 Reference 941-0660

SOUNDINGS IN FEET

SOUNDINGS IN FEET

Electronic Navigator Certificate of Authorization