

**Final Tidal Zoning
for OPR-L418-NRT6-2005, F00507_Rev**

**San Pedro Bay, Los Angeles and Long Beach Harbor, CA
Preliminary Zoning Accepted as Final Zoning**

Additional uncharted submarine pipelines and submarine cables may exist within the area of this chart. Not all submarine pipelines and submarine cables are required to be buried, and those that were originally buried may have become exposed. Mariners should use extreme caution when operating vessels in depths of water comparable to their draft in areas where pipelines and cables may exist, and when anchoring, dragging, or trawling. Covered wells may be marked by lighted or unlighted buoys.

- M.....Master
- W.....Secondary
- X.....Secondary
- Y.....Secondary
- Z.....Secondary

EXAMPLE: 9940-X

RATES ON THIS CHART

9940-X 9940-Y

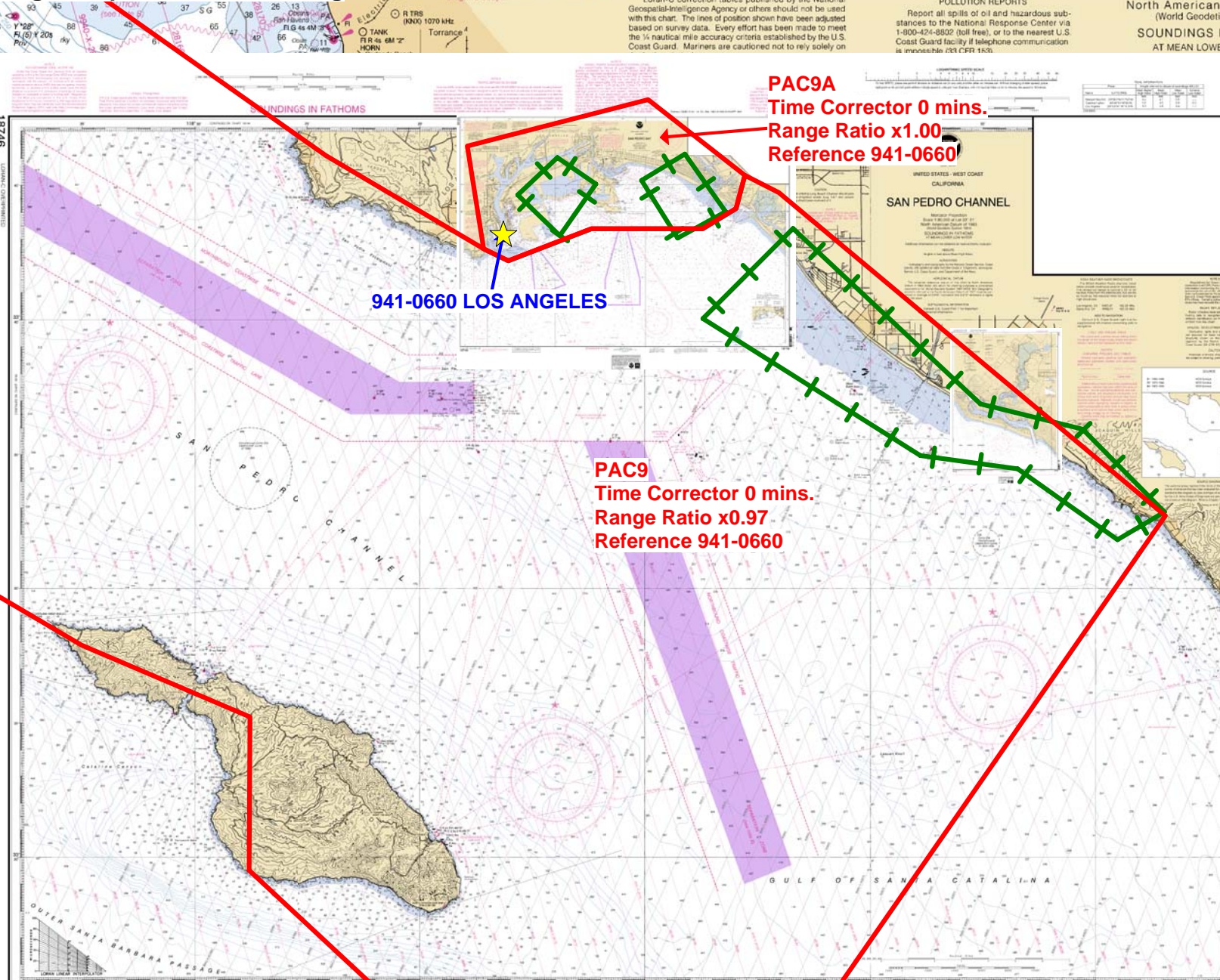
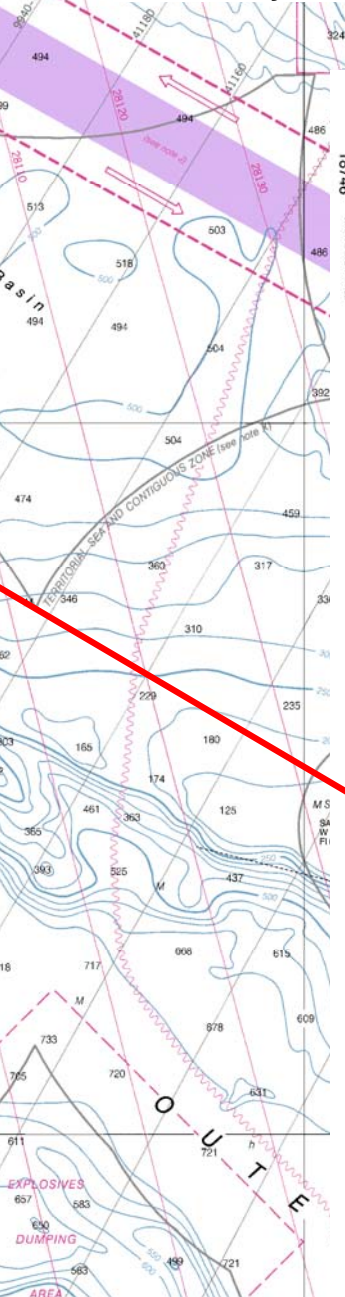
Loran-C correction tables published by the National Geospatial-Intelligence Agency or others should not be used with this chart. The lines of position shown have been adjusted based on survey data. Every effort has been made to meet the 1/4 nautical mile accuracy criteria established by the U.S. Coast Guard. Mariners are cautioned not to rely solely on

SAN DIEGO TO SAN

RADIO TOWERS
(M/F) 640 kHz

POLLUTION REPORTS
Report all spills of oil and hazardous substances to the National Response Center via 1-800-424-8802 (toll free), or to the nearest U.S. Coast Guard facility if telephone communication is impossible (33 CFR 154).

Mercator Projection
Scale 1:234,270
North American
(World Geodetic System 1983)
SOUNDINGS IN FATHOMS
AT MEAN LOW WATER



PAC9A
Time Corrector 0 mins.
Range Ratio x1.00
Reference 941-0660

941-0660 LOS ANGELES

PAC9
Time Corrector 0 mins.
Range Ratio x0.97
Reference 941-0660

UNITED STATES - WEST COAST
CALIFORNIA
SAN PEDRO CHANNEL
Magnetic Variation
Report all spills of oil and hazardous substances to the National Response Center via 1-800-424-8802 (toll free), or to the nearest U.S. Coast Guard facility if telephone communication is impossible (33 CFR 154).

EXPLOSIVES
DUMPING
AREA