

PAC205
Time Corrector -42 mins.
Range Corrector x1.02
Reference 943-7540

Preliminary as Final Tidal Zoning for S-N908-NRT3-2010, F00571 Tillamook Bay, OR

PAC601
Time Corrector -18 mins.
Range Corrector x1.00
Reference 943-7540

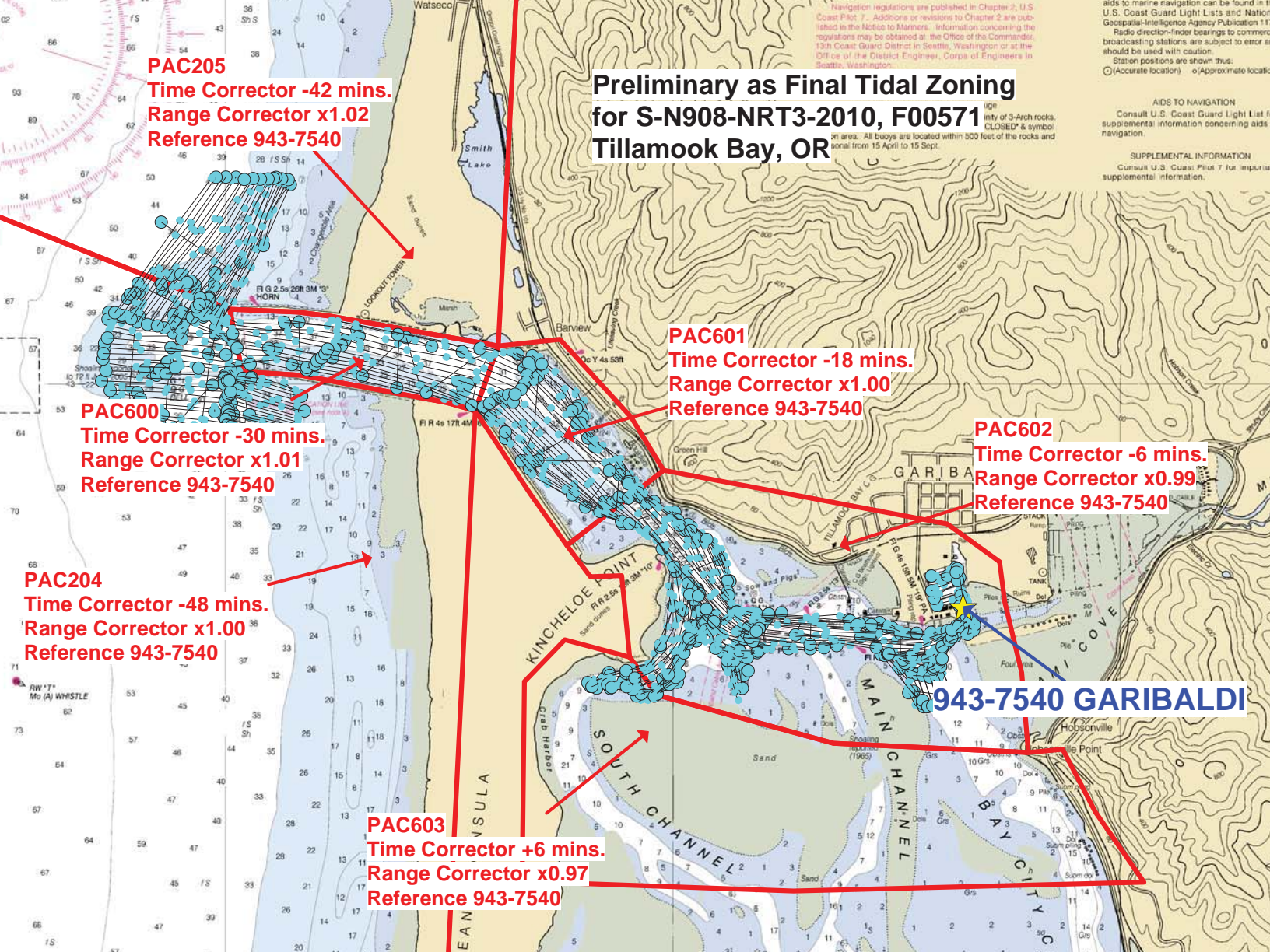
PAC600
Time Corrector -30 mins.
Range Corrector x1.01
Reference 943-7540

PAC602
Time Corrector -6 mins.
Range Corrector x0.99
Reference 943-7540

PAC204
Time Corrector -48 mins.
Range Corrector x1.00
Reference 943-7540

PAC603
Time Corrector +6 mins.
Range Corrector x0.97
Reference 943-7540

943-7540 GARIBALDI



Navigation regulations are published in Chapter 2, U.S. Coast Pilot 7. Additions or revisions to Chapter 2 are published in the Notice to Mariners. Information concerning the regulations may be obtained in the Office of the Commander, 13th Coast Guard District in Seattle, Washington or at the Office of the District Engineer, Corps of Engineers in Seattle, Washington.

Radio direction-finder bearings to commercial broadcasting stations are subject to error and should be used with caution. Station positions are shown thus: (Accurate location) (Approximate location)

AIDS TO NAVIGATION
Consult U.S. Coast Guard Light List for supplemental information concerning aids to navigation.

SUPPLEMENTAL INFORMATION
Consult U.S. Coast Pilot 7 for important supplemental information.