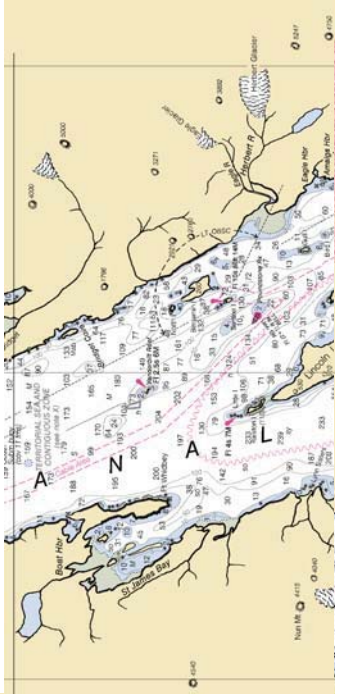
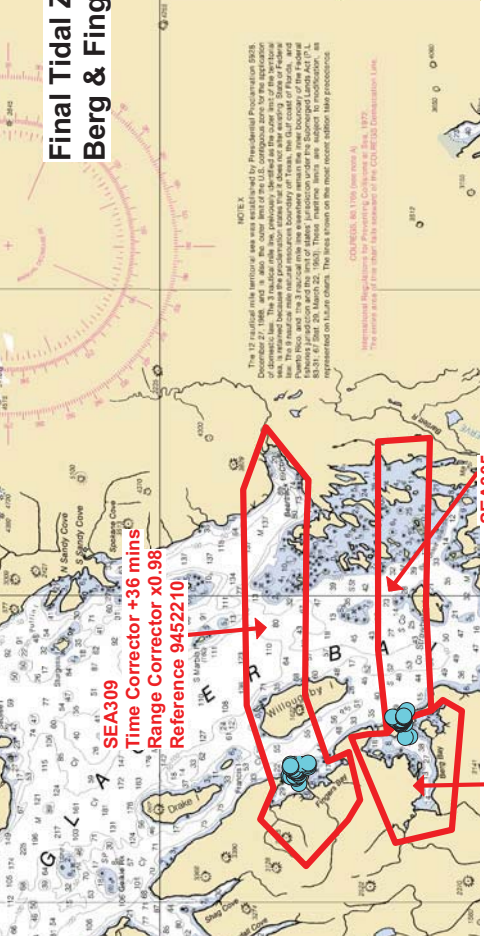


Final Tidal Zoning for OPR-O351-FA-2010, F00577 Berg & Fingers Bay, Northern Glacier Bay



LYNN CA

Mercator Projection
Scale 1:209,978 at Lat.
North American Datum
(World Geodetic System)
SOUNDINGS IN FATHOMS
(FATHOMS AND FEET TO ELEVEN
AT MEAN LOWER LOW WATER)

For Symbols and Abbreviations
Additional information can be obtained at:
HDS-1175
Exemptions of roads, bridges, landmarks and
other features are shown in red and refer to Mean Sea Level.
AUGUST 1975
Hydrography and Topography Survey
Survey with additional data from Geologic
Coast Guard.

NOTE:
The 12 radial mile territorial sea was established by Presidential Proclamation 5928, December 27, 1988, and is also the outer limit of the U.S. contiguous zone for the application of the law of the sea. The 12 radial mile territorial sea is shown in red on this chart. It is assumed because the proclamation states that it does not alter existing State of Idaho law. This 9 radial mile natural resource boundary of Texas, the Gulf coast of Florida, and the Gulf of Mexico is shown in blue on this chart. The 12 radial mile territorial sea is shown in blue on this chart and the rest of states' jurisdiction under the Submerged Lands Act (42 U.S.C. 83-31, 67 Stat. 25, March 22, 1953). These maritime limits are subject to modification, as represented on U.S. charts. The lines shown on the most recent edition take precedence.

COUNTRIES 65 1196 (see text p. 1197)
The entire area of this chart is a member of the COG-85230 Communication Line.

9452210 JUNEAU

