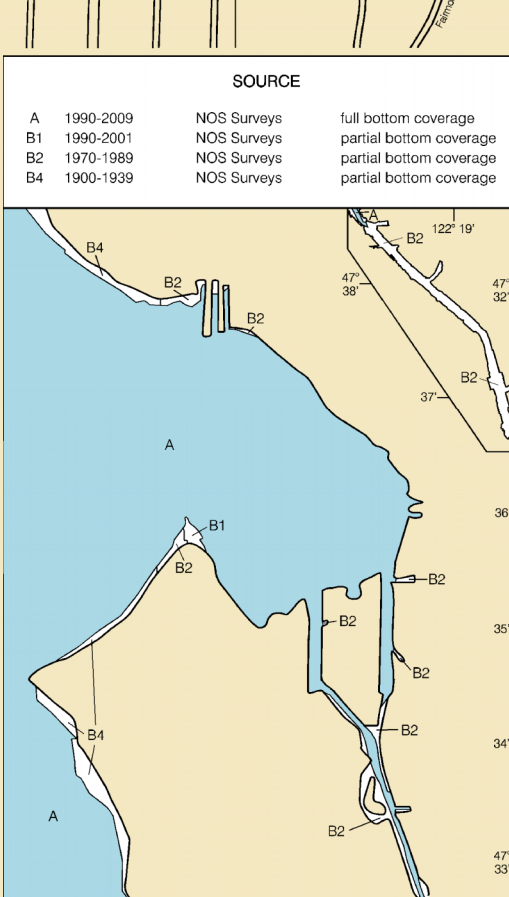
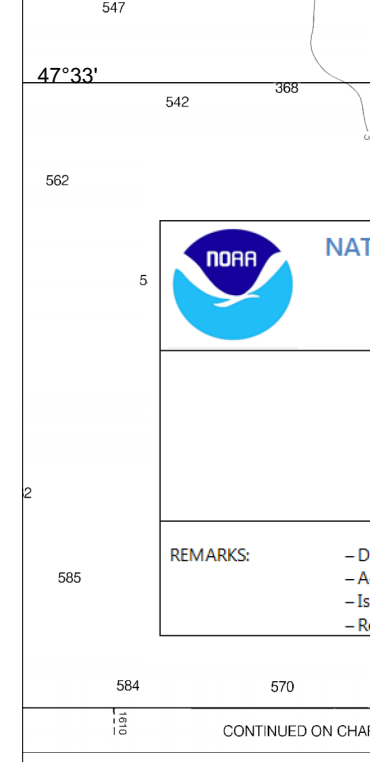
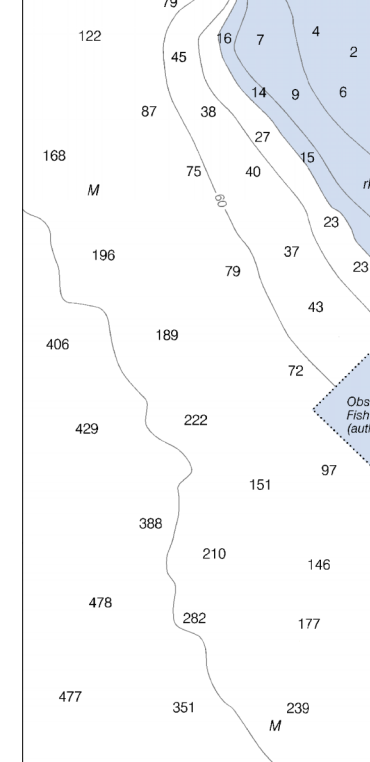
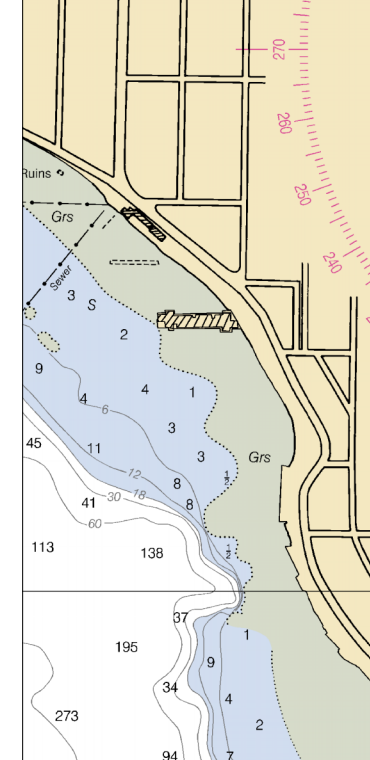
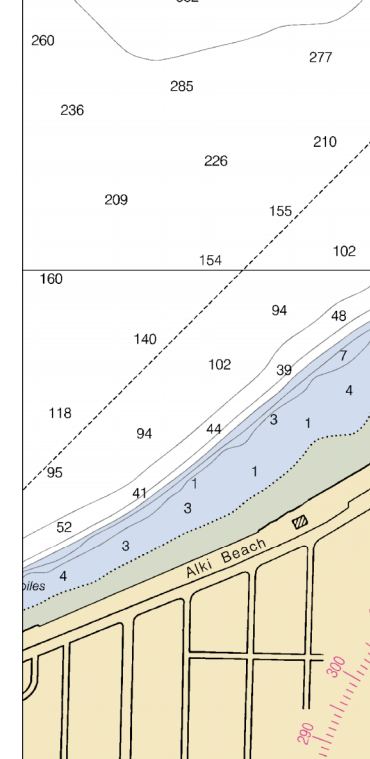
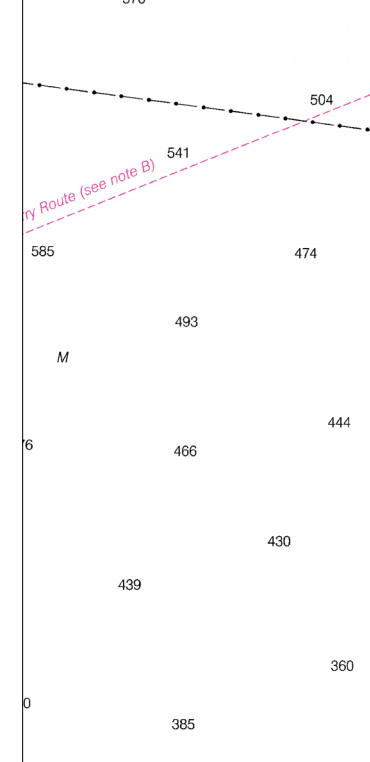
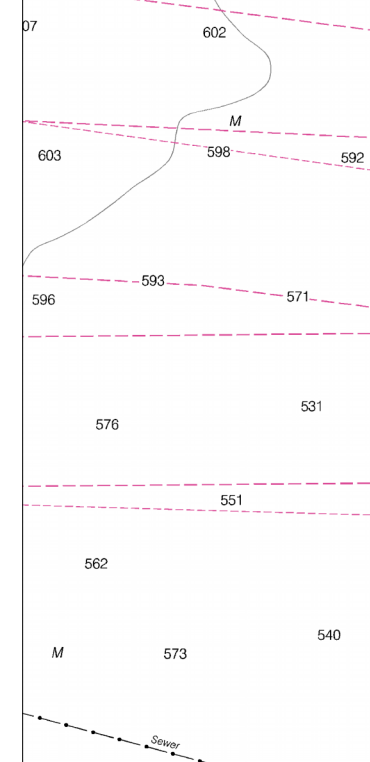
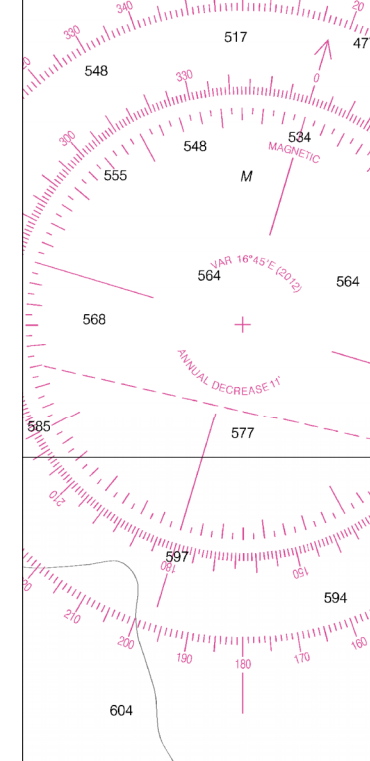


ANCHORAGE AREA 110 230 (see note A)



NOTE D
One-way traffic lanes established in the Puget Sound area. They have been designated to aid in the prevention of collisions. Vessels are not intended in any way to supersede or alter the applicable Rules of the Road. Separation zones are intended to separate vessels and are not to be used for anchorage. When crossing, traffic rules and regulations apply.

NOTE E
The prudent mariner will not rely on any single aid to navigation, particularly on a light, but will use all aids available. For details concerning the Puget Sound Light List and the National Coastal Guard District Light List, see the Puget Sound Light List and the National Coastal Guard District Light List, respectively, published by the U.S. Coast Guard.

NOTE F
Navigation regulations are published in Chapter 2 of the U.S. Coast Pilot 7. Additional regulations to Chapter 2 are published in the Puget Sound area. Information concerning the Puget Sound Light List and the National Coastal Guard District Light List is published in the Puget Sound Light List and the National Coastal Guard District Light List, respectively, published by the U.S. Coast Guard.

NOTE G
The U.S. Coast Guard system of Vessel Traffic Services (VTS) is in the Puget Sound area. Vessel traffic procedures and regulations are published in the Puget Sound Light List and the National Coastal Guard District Light List, respectively, published by the U.S. Coast Guard.

NOTE H
Limitations on the use of radio signals as aids to navigation can be found in the U.S. Coast Pilot 7, Volume 1, Part 1, Section 1.1.1. For details concerning the Puget Sound Light List and the National Coastal Guard District Light List, see the Puget Sound Light List and the National Coastal Guard District Light List, respectively, published by the U.S. Coast Guard.

NOTE I
Station positions are shown true. (Nautical location) (Opposite location)



UNITED STATES - WEST COAST
WASHINGTON

SEATTLE HARBOR

ELLIOTT BAY AND DUWAMISH WATERWAY

Mercator Projection
Scale 1:10,000 at Lat 47° 35'
North American Datum of 1983
SOUNDINGS IN FEET
AT MEAN LOWER LOW WATER

Additional information can be obtained at nauticalcharts.noaa.gov.

TOTAL INFORMATION

NAME	PLACE	Height referred to datum of soundings (M/LW)
Duwamish Waterway, Eight Mile Slough	Seattle	11.4
Seattle	Seattle	10.5
Seattle	Seattle	2.8

ABBREVIATIONS

Abbreviation	Meaning
ALR	Aluminum Light
ALR	Aluminum Light
ALR	Aluminum Light
ALR	Aluminum Light
ALR	Aluminum Light

LOGARITHMIC SPEED SCALE

SCALE 1:10,000

HEIGHTS

Height	Mean High Water	Mean Low Water
100	10.5	2.8
100	10.5	2.8
100	10.5	2.8

CAUTION
Improved channels shown by broken lines are subject to shoaling, particularly at the edges.

CAUTION
Temporary changes or defects in aids to navigation are not indicated on this chart. See Local Notices to Mariners.

PLANE COORDINATE GRID
(Based on NAD 1983)
Washington State Grid, north zone is indicated by dashed ticks at 5000-foot intervals. The last three digits are omitted.

ADDS TO NAVIGATION
Consult U.S. Coast Pilot 7 for important supplemental information.

SUPPLEMENTAL INFORMATION
Consult U.S. Coast Pilot 7 for important supplemental information.

NOAA WEATHER RADIO BROADCASTS
The NOAA Weather Radio station listed below provides continuous weather broadcasts. The reception range is typically 20 to 40 nautical miles from the antenna site, but can be as much as 100 nautical miles for stations at high elevations.

RADAR REFLECTORS
Radar reflectors have been placed on many floating aids to navigation. Individual radar reflector identification numbers on these aids has been omitted from this chart.

DUWAMISH WATERWAY

NAME OF CHANNEL	DEPTH	DATE OF SURVEY
HARBOR ISLAND REACH	33.3	20.1
WEST END BRIDGE REACH	16.7	20.1
EAST END BRIDGE REACH	6.4	20.1
TARRANTS REACH	6.1	11.3

NOTE J
Manned are cautioned that the Washington State Ferry may deviate from the published standard routes due to inclement weather, traffic conditions, navigational hazards or other emergency conditions.

NOTE K
BACULUS BRIDGE
Baculus Bridge is open to a full depth of vertical clearance at a charted horizontal clearance.

NOTE L
POLLUTION REPORTS
Report all spills of oil and hazardous substances to the National Response Center via 1-800-254-8802 (hot line), or to the nearest U.S. Coast Guard facility. Telephone communication is prohibited (33 CFR 153).

NOTE M
ANCHORING STANDARDS OF CARE
Anchoring Standards of Care have been established for this area. The Safety Plan, These Standards of Care supplement existing marine practices for anchoring, and are separated into different parts. If your vessel does not have a copy of the Anchoring Standards of Care, download one at <http://www.marine.gov.au> or contact (206) 443-385.

NOTE N
ADDITIONAL UNCHARTED OBSTRUCTIONS
Additional uncharted obstructions may be located in this area. Not all uncharted obstructions are shown on this chart. Those that were original obstructions are shown on this chart. Those that were original obstructions are shown on this chart. Those that were original obstructions are shown on this chart.

NOTE O
PIPING AREAS
Piping areas are shown on this chart. Those that were original piping areas are shown on this chart. Those that were original piping areas are shown on this chart.

NOTE P
CAUTION
SUBMERGED PIPELINE
Submerged pipelines are shown on this chart. Those that were original pipelines are shown on this chart. Those that were original pipelines are shown on this chart.

NOTE Q
ADDITIONAL UNCHARTED OBSTRUCTIONS
Additional uncharted obstructions may be located in this area. Not all uncharted obstructions are shown on this chart. Those that were original obstructions are shown on this chart. Those that were original obstructions are shown on this chart.

NOTE R
ADDITIONAL UNCHARTED OBSTRUCTIONS
Additional uncharted obstructions may be located in this area. Not all uncharted obstructions are shown on this chart. Those that were original obstructions are shown on this chart. Those that were original obstructions are shown on this chart.

NOTE S
ADDITIONAL UNCHARTED OBSTRUCTIONS
Additional uncharted obstructions may be located in this area. Not all uncharted obstructions are shown on this chart. Those that were original obstructions are shown on this chart. Those that were original obstructions are shown on this chart.

NOT FOR NAVIGATION

NATIONAL OCEANIC AND ATMOSPHERIC ADMINISTRATION
NATIONAL OCEAN SERVICE
OFFICE OF COAST SURVEY

S-N923-FA-12, F00613
Elliott Bay, WA
Elliott Bay

REMARKS:
- Depths in Feet
- Additional data and products for this survey available <http://www.nauticalcharts.noaa.gov>
- Isolated features such as rocks, wrecks, and obstructions are not portrayed on this product
- Read attached F00613_read_me.txt for additional information

CONTINUED ON CHART 18449