

81°18'W

81°17'W

81°16'W

O R T H

57

60 62 65 59 58 56 57

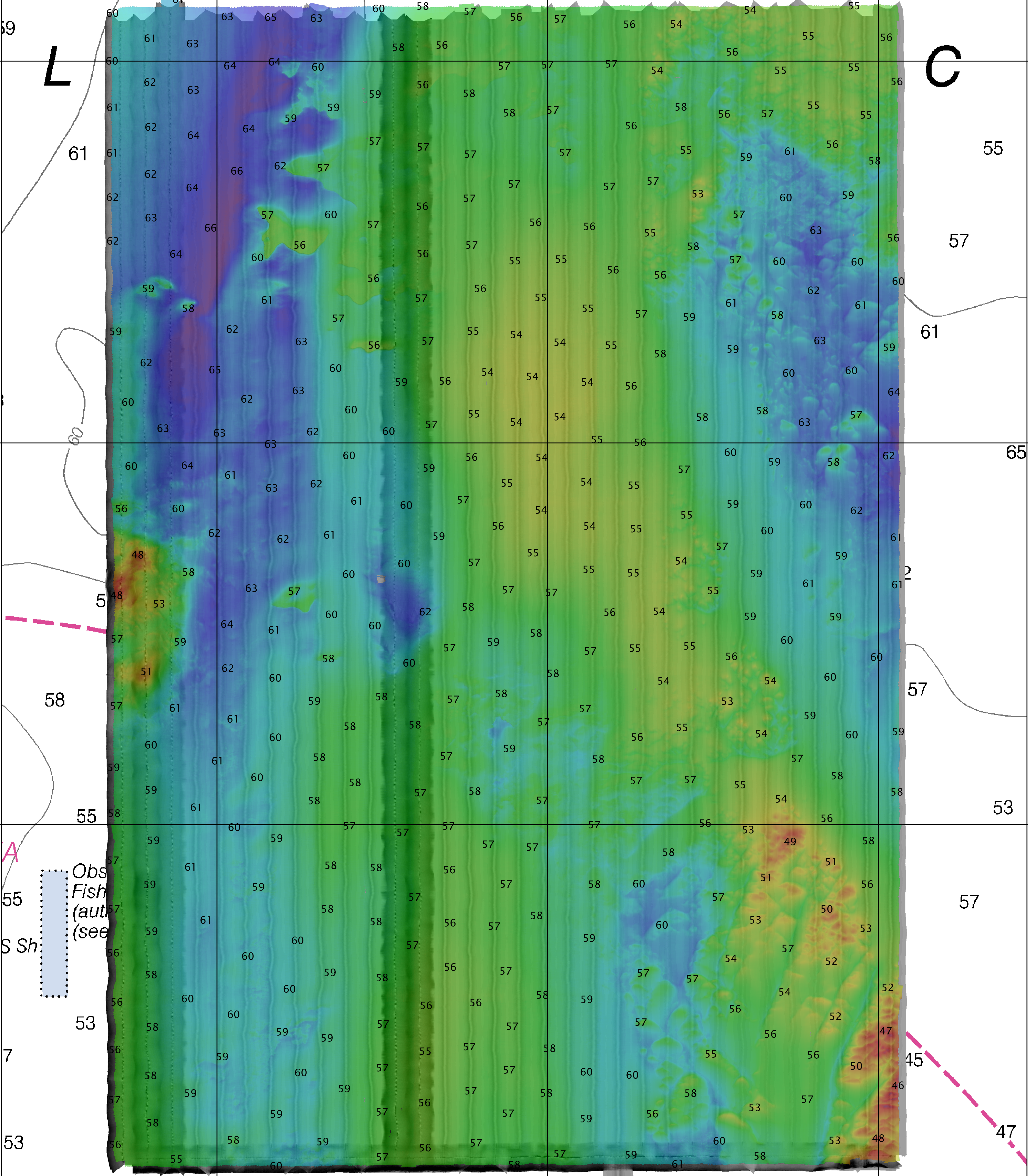
57

30° 29' N

L

C

30° 29' N



30° 28' N

30° 28' N

30° 27' N

30° 27' N

30° 26' N

30° 26' N

81°18'W

81°17'W

81°16'W

NOT FOR NAVIGATION

NATIONAL OCEANIC AND ATMOSPHERIC ADMINISTRATION
NATIONAL OCEAN SERVICE
OFFICE OF COAST SURVEY

S-G925-NRT2-13, F00636
*Proposed Anchorage Offshore
Mayport/St Johns River, Florida
7 NM NE of St Johns Point*

REMARKS:
- Depths in feet
- Additional data and products for this survey available <http://www.ngdc.noaa.gov>
- Isolated features such as rocks, wrecks, and obstructions are not portrayed on this product
- Read attached 1000S, and, read for additional information