

80°50'W

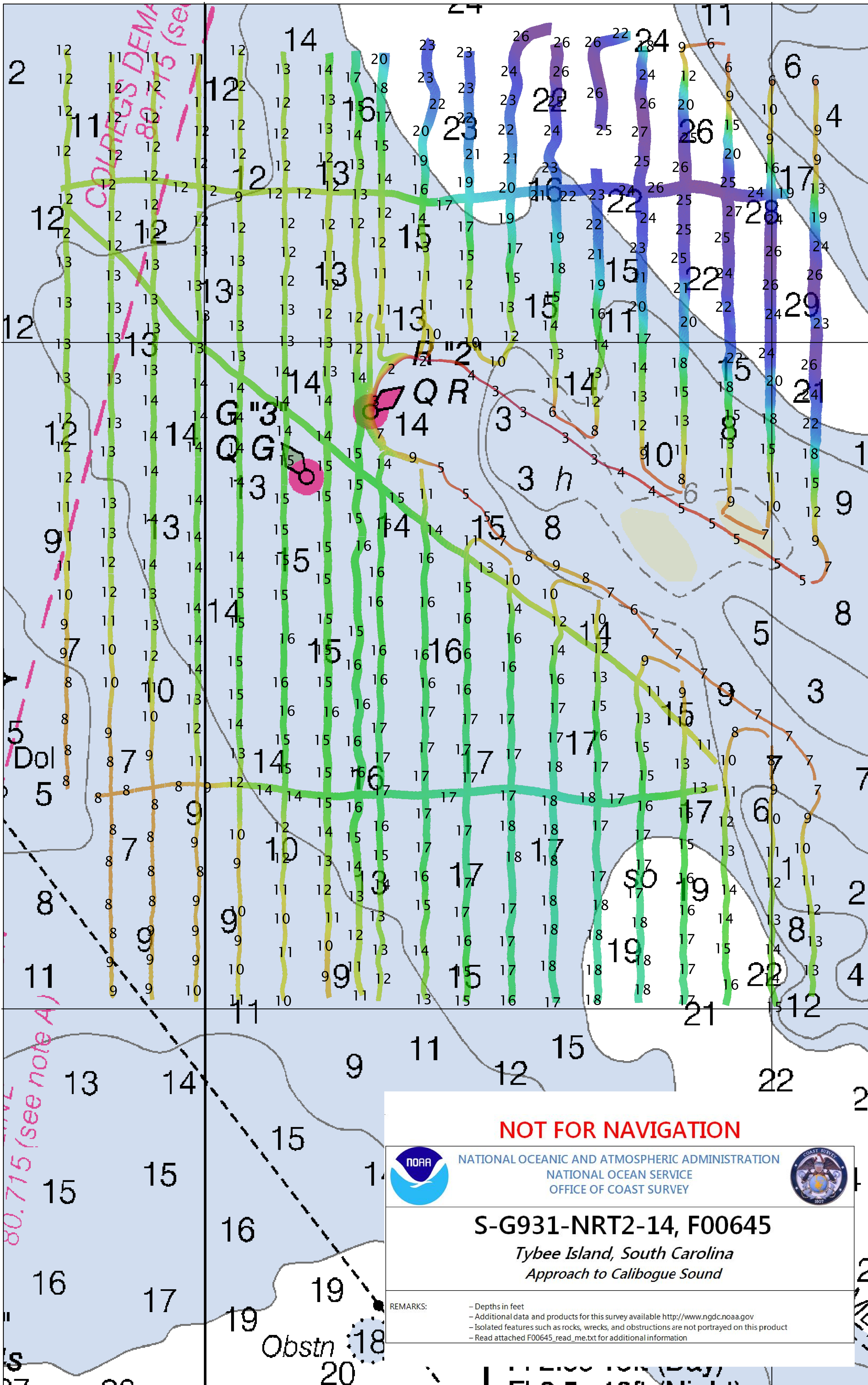
80°49'W

32° 04' N

32° 04' N

32° 03' N

32° 03' N



NOT FOR NAVIGATION



NATIONAL OCEANIC AND ATMOSPHERIC ADMINISTRATION
NATIONAL OCEAN SERVICE
OFFICE OF COAST SURVEY



S-G931-NRT2-14, F00645

*Tybee Island, South Carolina
Approach to Calibogue Sound*

REMARKS:

- Depths in feet
- Additional data and products for this survey available <http://www.ngdc.noaa.gov>
- Isolated features such as rocks, wrecks, and obstructions are not portrayed on this product
- Read attached F00645_read_me.txt for additional information

80°50'W

80°49'W