

156°09'W 156°06'W 156°03'W 156°W 155°57'W 155°54'W 155°51'W 155°48'W 155°45'W 155°42'W 155°39'W

71° 27' N

71° 27' N

**NOT FOR NAVIGATION**



NATIONAL OCEANIC AND ATMOSPHERIC ADMINISTRATION  
NATIONAL OCEAN SERVICE  
OFFICE OF COAST SURVEY

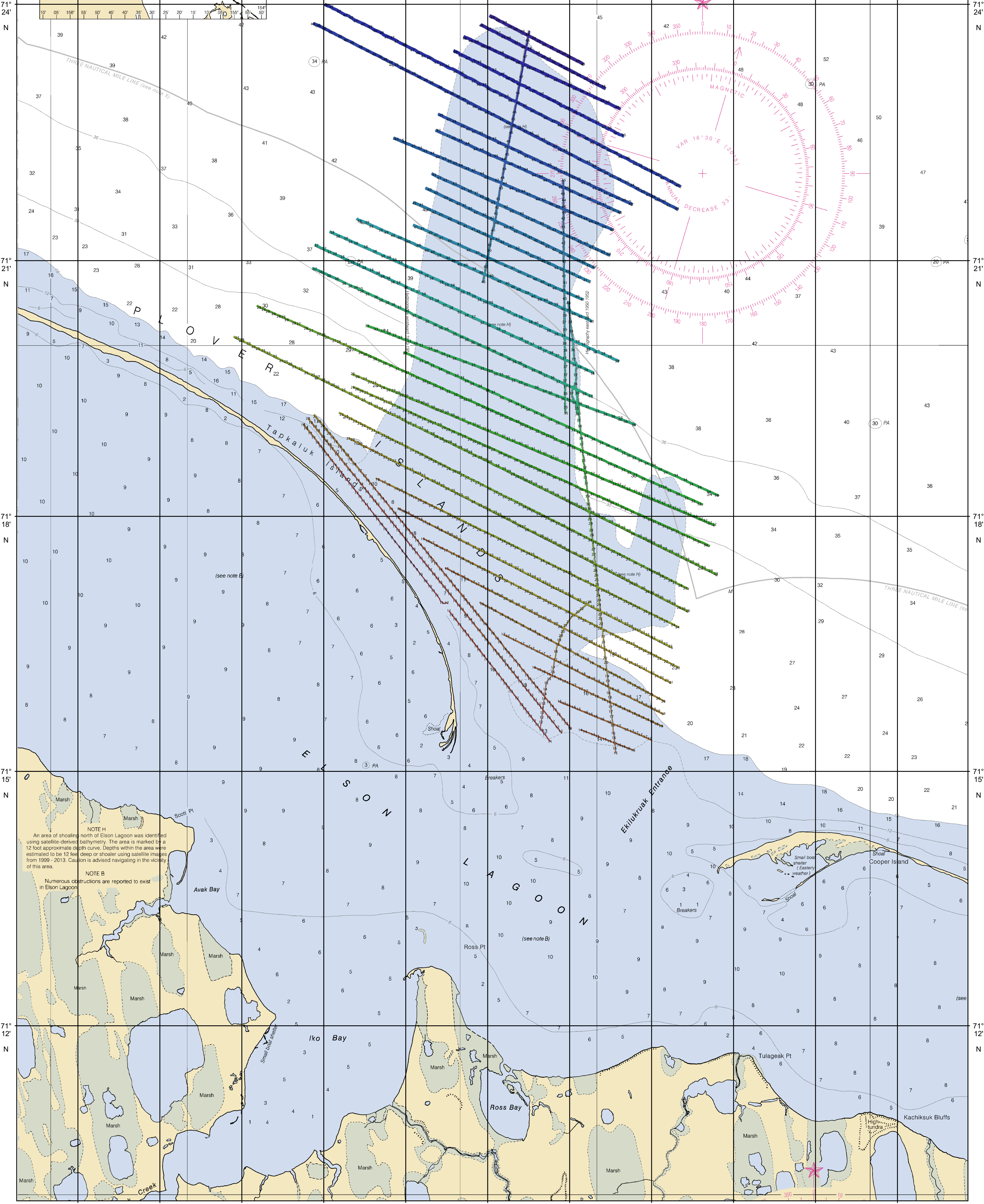
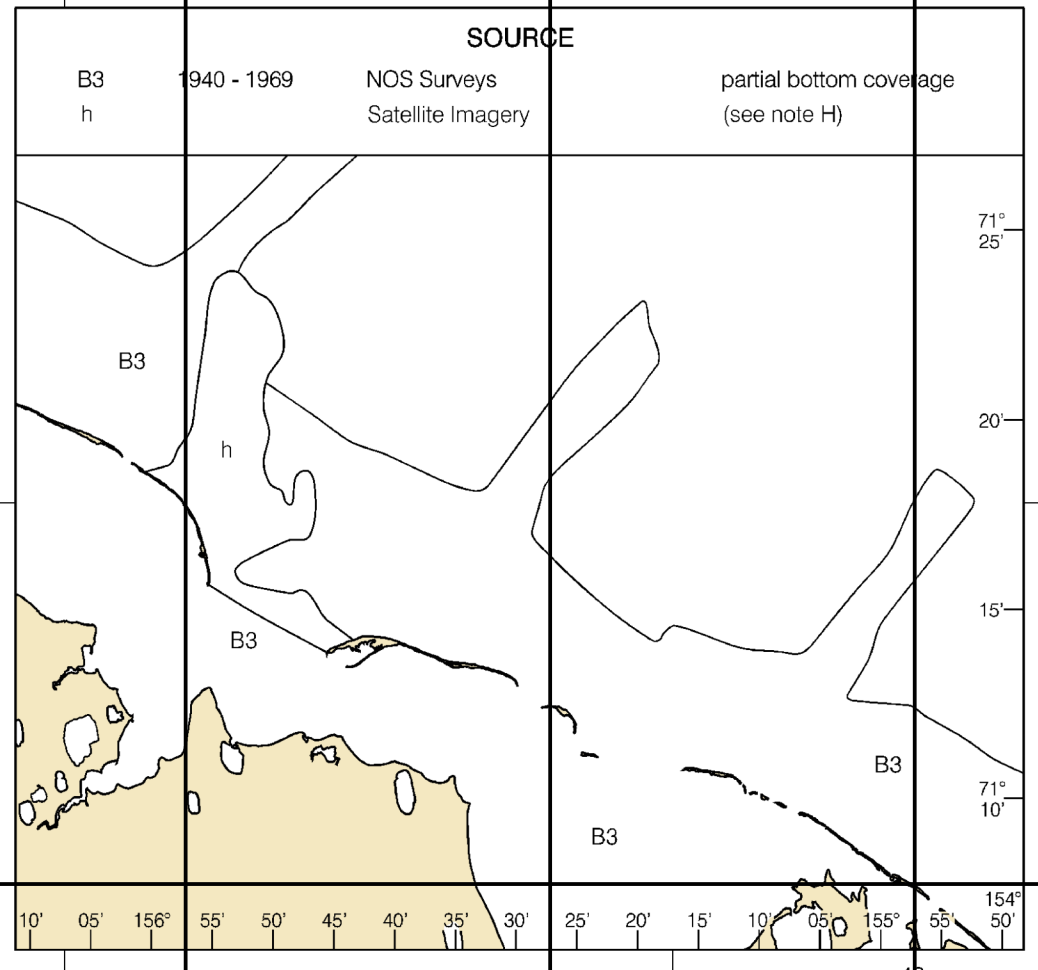


**S-S922-FA-15, F00666**

*Beaufort Sea  
Point Barrow*

REMARKS:  
- Depths in Feet  
- Additional data and products for this survey available <http://www.ncei.noaa.gov>  
- Isolated features such as rocks, wrecks, and obstructions are not portrayed on this product  
- Read attached F00666\_read\_me.txt for additional information

**SOURCE DIAGRAM**  
The outlined areas represent the limits of the most recent hydrographic survey information that has been evaluated for charting. Surveys have been banded in this diagram by date and type of survey. Channels maintained by the U.S. Army Corps of Engineers are periodically resurveyed and are not shown on this diagram. Refer to Chapter 1, United States Coast Pilot.



**NOTE H**  
An area of shoaling north of Elson Lagoon was identified using satellite-derived bathymetry. The area is marked by a 12 foot approximate depth curve. Depths within the area were estimated to be 12 feet deep or shallower using satellite images from 1999 - 2013. Caution is advised navigating in the vicinity of this area.

**NOTE B**  
Numerous obstructions are reported to exist in Elson Lagoon.

156°09'W 156°06'W 156°03'W 156°W 155°57'W 155°54'W 155°51'W 155°48'W 155°45'W 155°42'W 155°39'W

71° 12' N

71° 12' N