

149°27'W

149°24'W

149°21'W

149°18'W

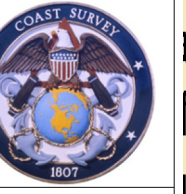
037

outer limit of the territorial sea
 limit of the other laws. The
 of Florida, Texas, and Puer
 most cases the inner limit
 jurisdiction of the states.
 mile Exclusive Economic
 Unless fixed by treaty or t
 to modification.

NOT FOR NAVIGATION



NATIONAL OCEANIC AND ATMOSPHERIC ADMINISTRATION
 NATIONAL OCEAN SERVICE
 OFFICE OF COAST SURVEY



S-P936-RA-16, F00683

Seward, Alaska
Resurrection Bay

REMARKS:
 - Depths in Fathoms
 - Additional data and products for this survey available <http://www.ncei.noaa.gov>
 - Isolated features such as rocks, wrecks, and obstructions are not portrayed on this product
 - Read attached F00683_read_me.txt for additional information

60° 06' N

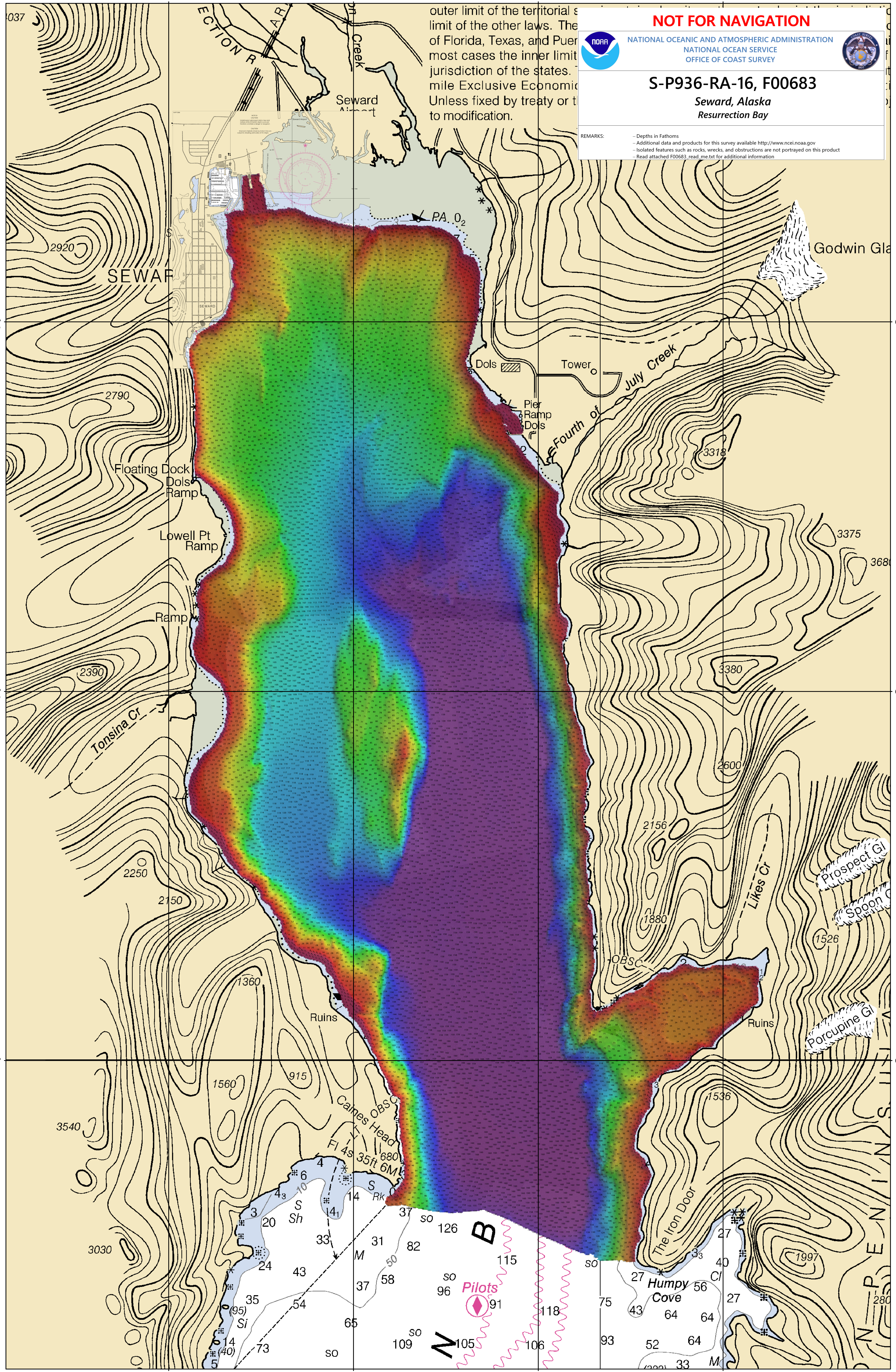
60° 03' N

60° N

60° 06' N

60° 03' N

60° N



149°27'W

149°24'W

149°21'W

149°18'W