

F00759

U.S. Department of Commerce
National Oceanic and Atmospheric Administration
National Ocean Survey

DESCRIPTIVE REPORT

Type of Survey: Navigable Area

Registry Number: F00759

LOCALITY

State(s): US Virgin Islands

General Locality: St John

Sub-locality: Enighed Pond

2018

CHIEF OF PARTY
Christiaan van Westendorp, CAPT/NOAA

LIBRARY & ARCHIVES

Date:

HYDROGRAPHIC TITLE SHEET

F00759

INSTRUCTIONS: The Hydrographic Sheet should be accompanied by this form, filled in as completely as possible, when the sheet is forwarded to the Office.

State(s): **US Virgin Islands**

General Locality: **St John**

Sub-Locality: **Enighed Pond**

Scale: **10,000**

Dates of Survey: **October 30, 2018**

Project Number: **OPR-I369-TJ-18**

Data Source: **NOAA Ship *Thomas Jefferson***

Chief of Party: **Christiaan van Westendorp, CAPT/NOAA**

Soundings by: **multibeam**

Imagery by: **multibeam**

Verification by: **Atlantic Hydrographic Branch**

Soundings Acquired in: **Meters at Mean Lower Low Water**

Remarks:

Any revisions to the Descriptive Report (DR) applied during office processing are shown in red italic text. The DR is maintained as a field unit product, therefore all information and recommendations within this report are considered preliminary unless otherwise noted. The final disposition of survey data is represented in the NOAA nautical chart products. All pertinent records for this survey are archived at the National Centers for Environmental Information (NCEI) and can be retrieved via <https://www.ncei.noaa.gov/>.

Products created during office processing were generated in NAD83 UTM 20N, MLLW. All references to other horizontal or vertical datums in this report are applicable to the processed hydrographic data provided by the field unit.

Descriptive Report Summary F00759	
Project	OPR-I369-TJ-18
Survey	F00759
State	US Virgin Islands
Locality	St John
Sub Locality	Enighed Pond
Scale of Survey	1:5000
Sonars Used	Kongsberg Maritime EM 2040 (MBES)
Horizontal Datum	North American Datum 1983
Vertical Datum	Mean Lower Low Water
Vertical Datum Correction	VDatum
Projection	UTM 20N
Field Unit	NOAA Ship <i>Thomas Jefferson</i>
Survey Dates	10/30/2018
Chief of Party	Christiaan van Westendorp, CAPT/NOAA

A. Area Surveyed

F00759 is located in Turner Bay and Enighed Pond on the west coast of St. John Island, U.S. Virgin Islands (Figures 1 and 2). The survey was conducted in accordance with requests from local stakeholders and directions from the project manager.

Data were acquired within the following survey limits (Table 1):

Table 1: Survey limits

Northwest Limit	Southeast Limit
18° 19' 32.18" N 64° 48' 29.34" W	18° 19' 37.54" N 64° 47' 36.46" W

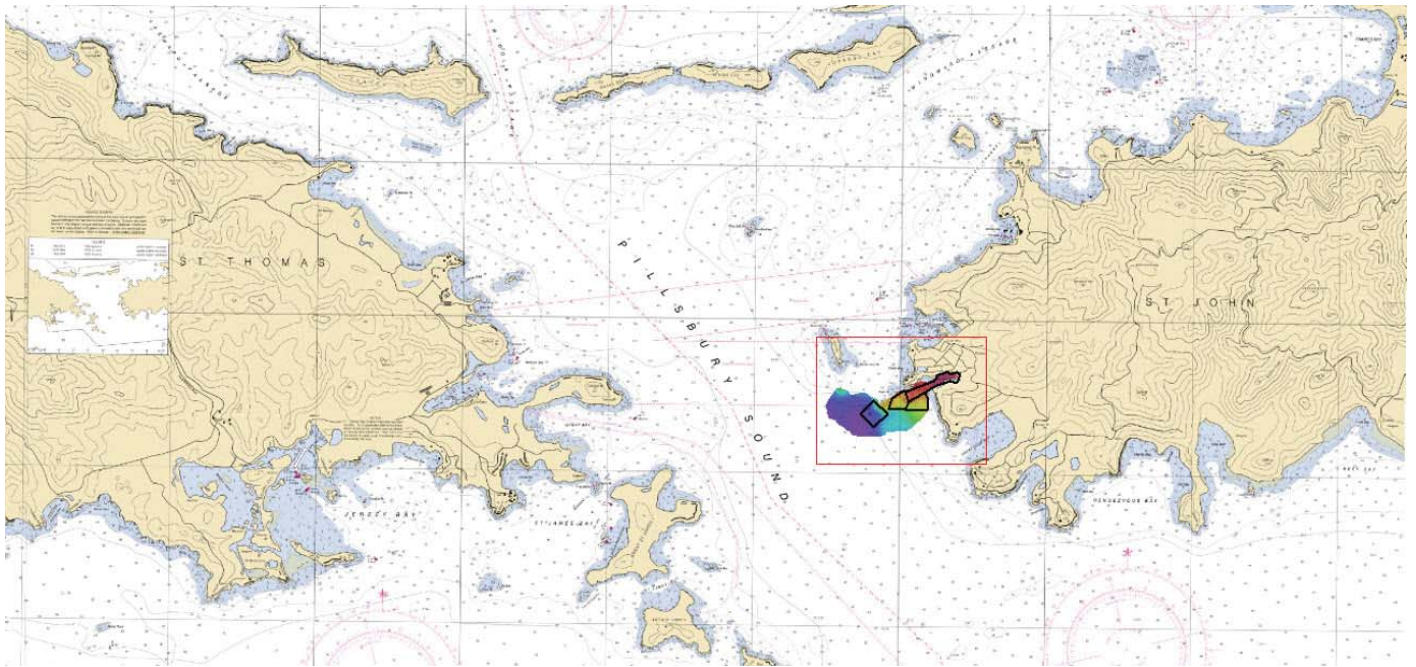


Figure 1: Survey F00759 area overview

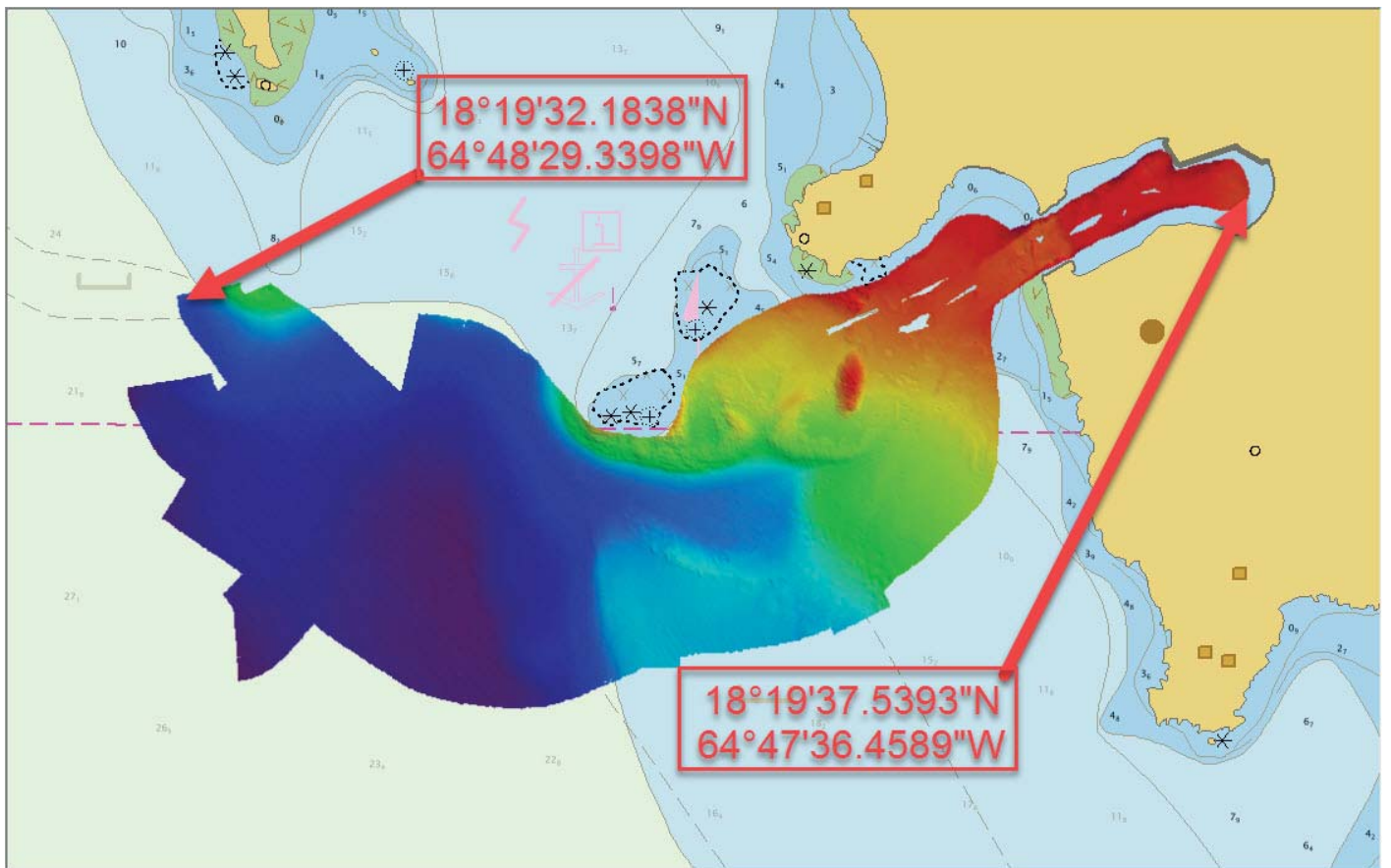


Figure 2: Survey F00759 plotted over ENC US5PR16M

B. Survey Purpose

The NOAA Ship Thomas Jefferson (TJ) surveyed Enighed Pond in 2017 following Hurricane Maria (Figure 3); Survey F00759 complements and validates the 2017 survey (Figures 4 and 5). Survey F00759 supports requests from local stakeholders to provide updated survey data in support of local marine supply vessels. TJ also used the survey as an opportunity to investigate two charted dangerous wrecks with least depth unknown in the vicinity of the approach into Enighed Pond.

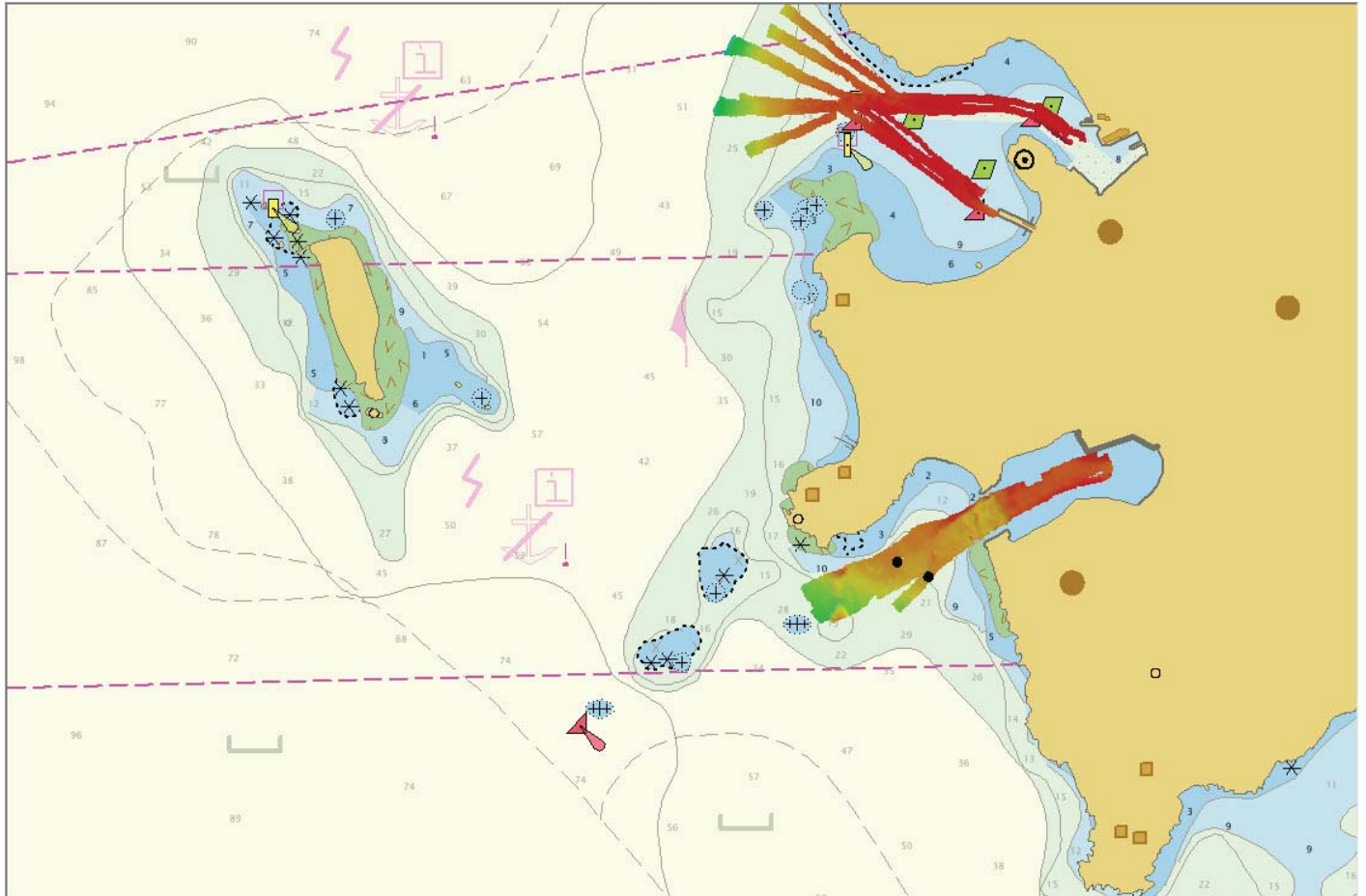


Figure 3: Overview of areas surveyed by TJ in 2017

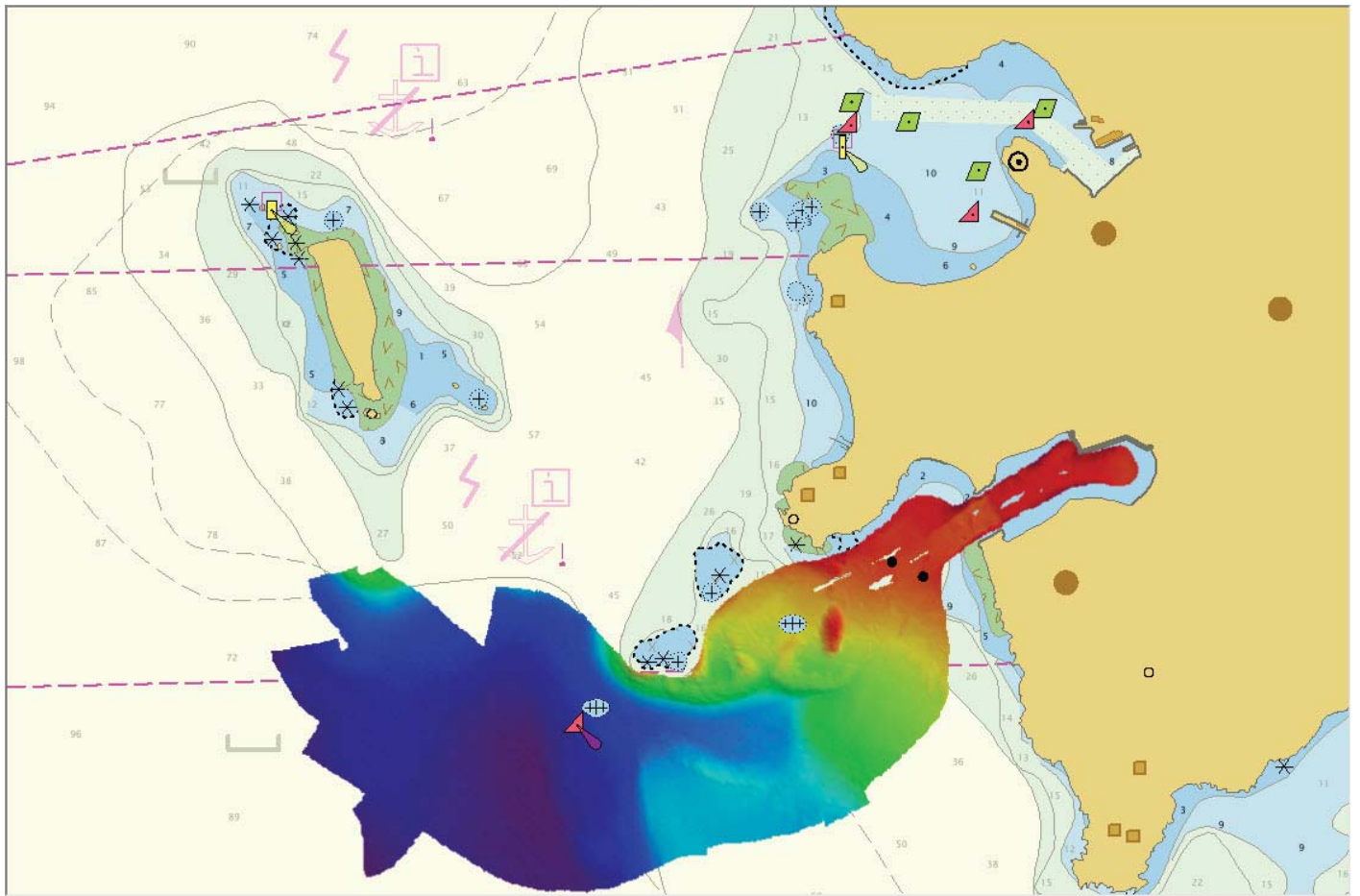


Figure 4: Overview of areas surveyed by TJ in 2018

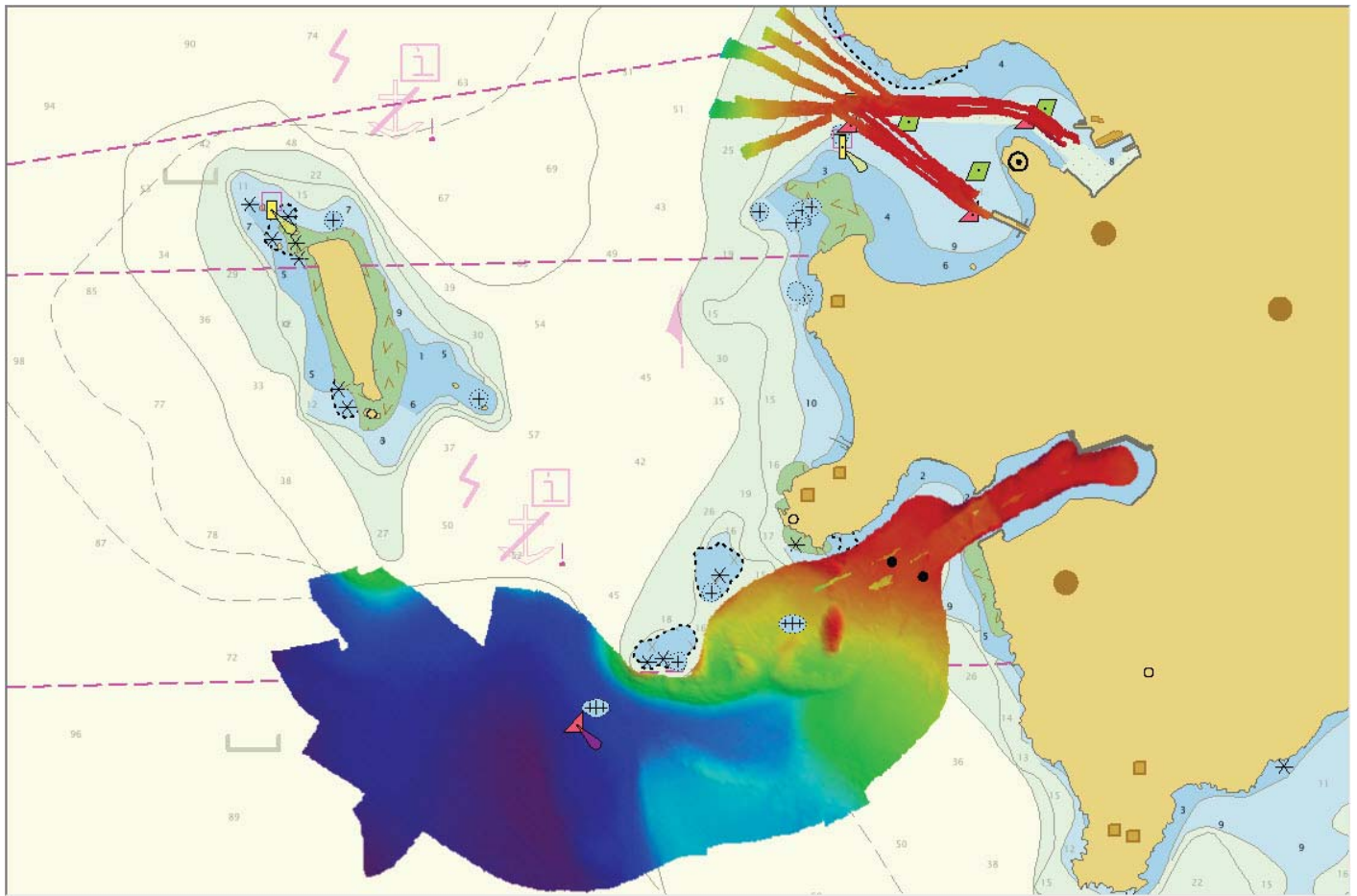


Figure 5: Overview of areas surveyed by TJ in both 2017 and 2018

C. Intended Use of Survey

The entire survey is adequate to supersede previous data.

Survey F00759 is adequate to use for charting purposes.

D. Data Acquisition and Processing

Reference the Data Acquisition and Processing Report (DAPR) for a complete description of data acquisition and processing systems, survey vessels, quality control procedures and data processing methods.

Survey operations and planning for F00759 were designed to complement and validate F00704 (NOAA Ship Thomas Jefferson, 2017) survey coverage in accordance with instructions from the Project Manager. Full Coverage MBES data were acquired in all areas not covered by MBES data from F00704 in and around Enighed Pond. Holidays exists

within the F00759 MBES surface; however, no MBES holidays exist when data from Survey F00759 and Survey F00704 are combined.

Data were collected and processed in accordance with Object Detection MBES standards. Variable Resolution (VR) Combined Uncertainty and Bathymetric Estimator (CUBE) bathymetric grid was generated for the entire survey area and all depth ranges.

One cast was taken within the survey area (Figure 6) and applied to MBES data in CARIS HIPS in accordance with the DAPR.

10.0 linear nautical miles of mainscheme data and 1.5 linear nautical miles of crossline data were collected. Crossline mileage amounted to 13.6 % of mainscheme mileage.

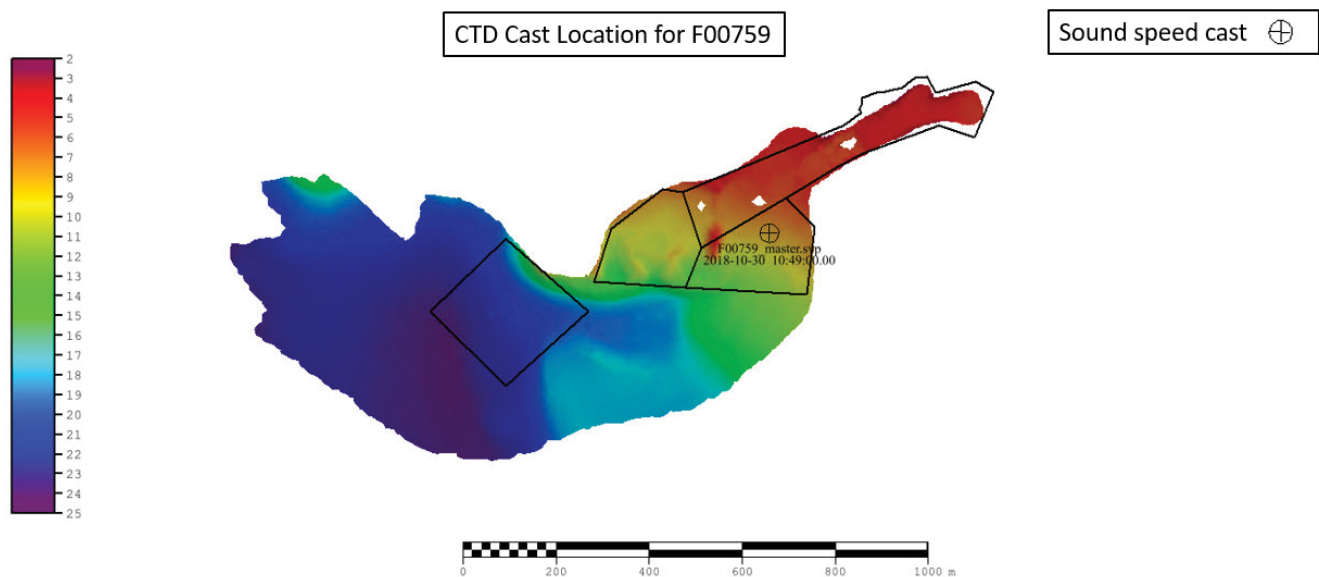


Figure 6: F00759 sound speed cast location

E. Uncertainty

F00759 data were reduced to Mean Lower Low Water (MLLW) using Vertical Datum (VDatum) methods.

The values used to calculate Total Propagated Uncertainty (TPU) are listed below.

- Ellipsoidal Referenced Survey (ERS) separation model uncertainty (via VDatum): 0.12 m
- Sound speed measured: 4.000 m/s
- Sound speed surface: 0.200 m/s

A single resolution 50cm surface from Survey F00759 was compared with the single resolution 50cm CUBE surface from Survey F00704; the two surveys are in general agreement. A difference surface analysis resulted in a mean difference of 0.15m with a standard deviation of 0.09m (Figure 7). More than 99.5% of nodes passed expected uncertainty standards (Figure 8).

Crosslines were acquired and a Mainscheme-Crossline comparison was conducted in accordance with procedures outlines in the DAPR. A difference surface analysis resulted in a mean difference of 0.02m with a standard deviation of 0.04m (Figure 9). More than 99.5% of nodes passed expected uncertainty standards (Figure 10).

The final VR CUBE bathymetric grid for F00759 is compliant with HSSD 2018 uncertainty and density standards (Figures 11 and 12).

Refer to the DAPR for more information about the methods used to assess uncertainty.

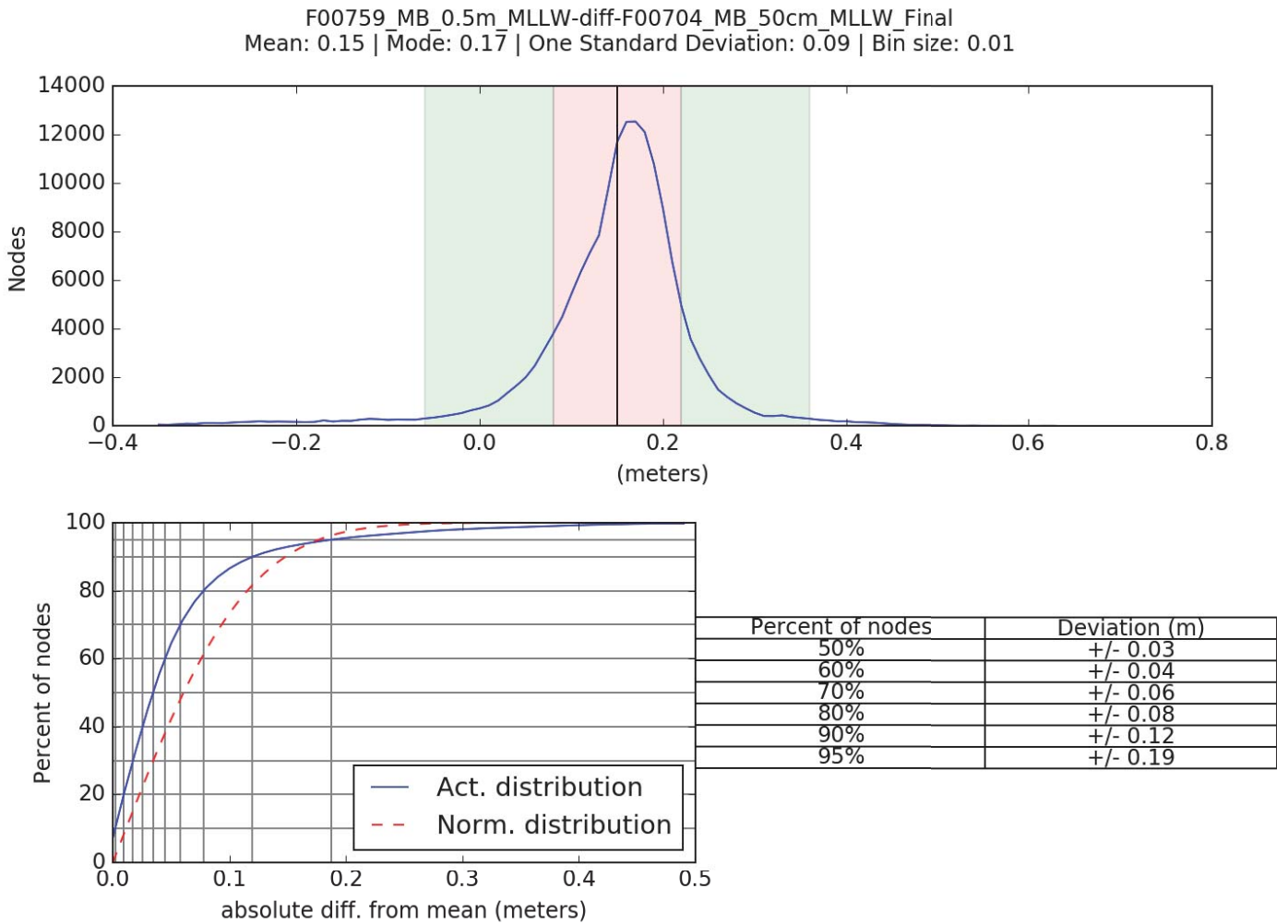


Figure 7: F00759 vs. F00704 difference surface statistics - summary statistics and distribution

Comparison Distribution

Per Grid: F00759_MB_0.5m_MLLW-F00704_MB_50cm_MLLW_Final_fracAllowErr.csar

99.5+% nodes pass (162788), min=0.0, mode=0.2 mean=0.2 max=3.1

Percentiles: 2.5%=0.0, Q1=0.2, median=0.2, Q3=0.3, 97.5%=0.4

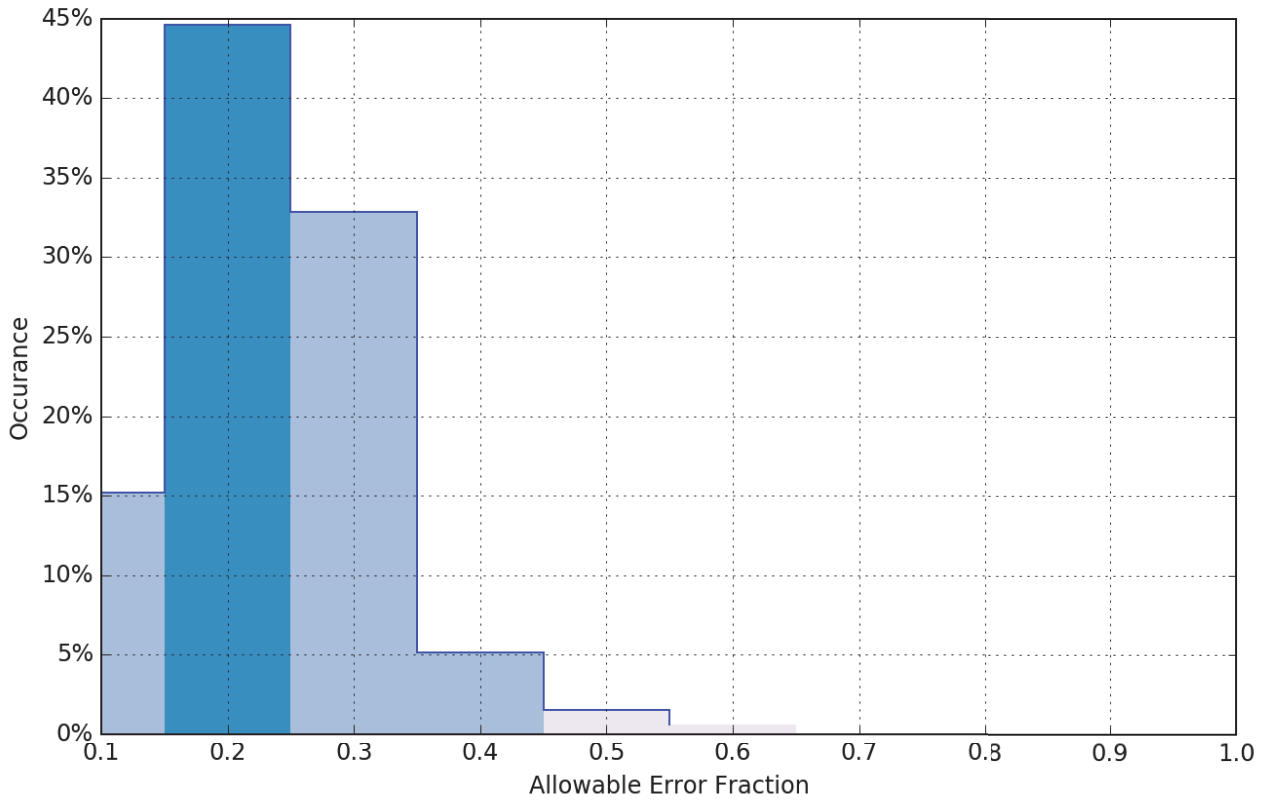


Figure 8: F00759 vs. F00704 difference surface statistics - observed difference values as a fraction of expected allowable difference values

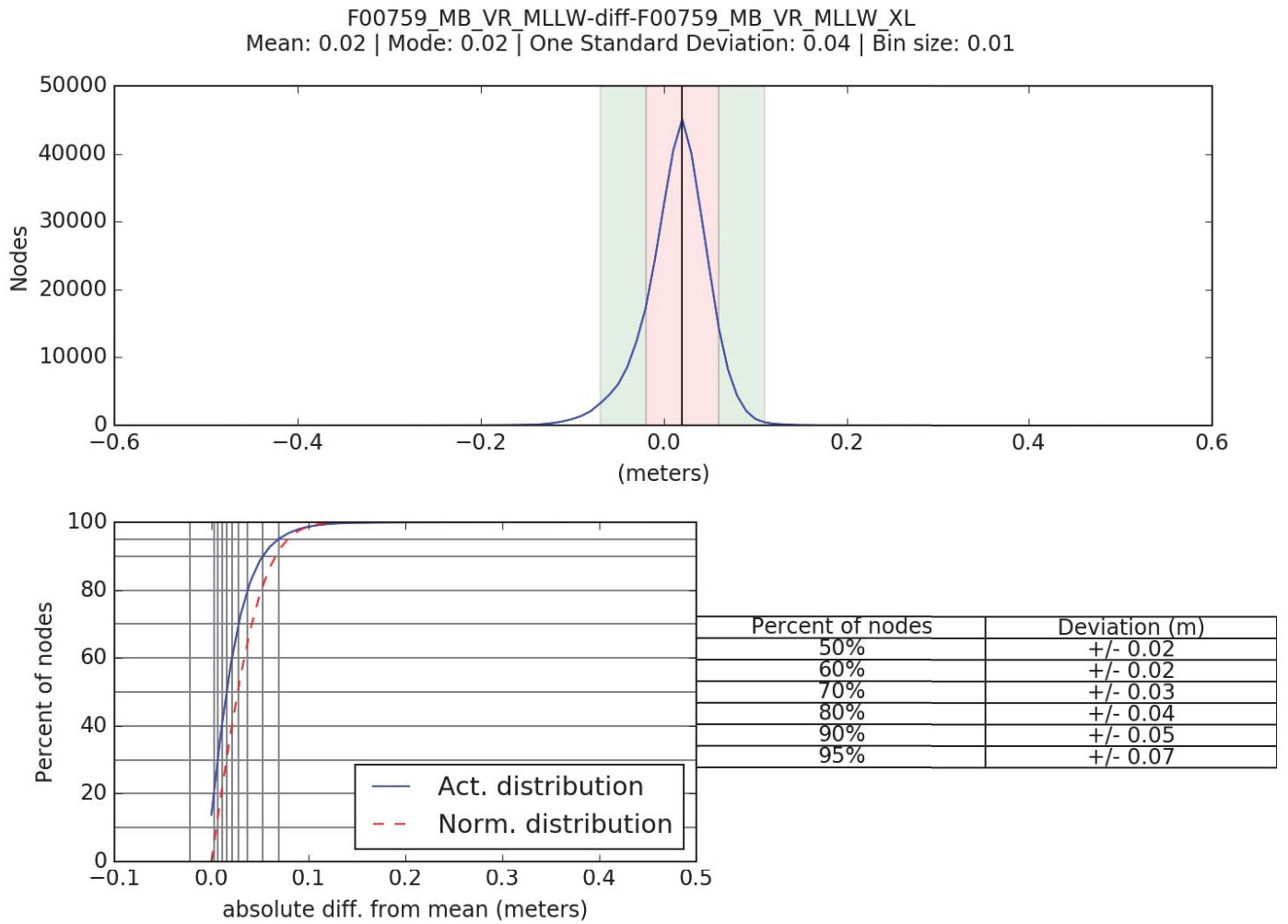


Figure 9: F00759 Mainscheme vs. F00759 Crossline difference surface statistics - summary statistics and distribution

Comparison Distribution

Per Grid: F00759_MB_VR_MLLW-F00759_MB_VR_MLLW_XL_fracAllowErr.csar

99.5+% nodes pass (325308), min=0.00, mode=0.03 mean=0.04 max=2.38

Percentiles: 2.5%=0.00, Q1=0.02, median=0.04, Q3=0.06, 97.5%=0.11

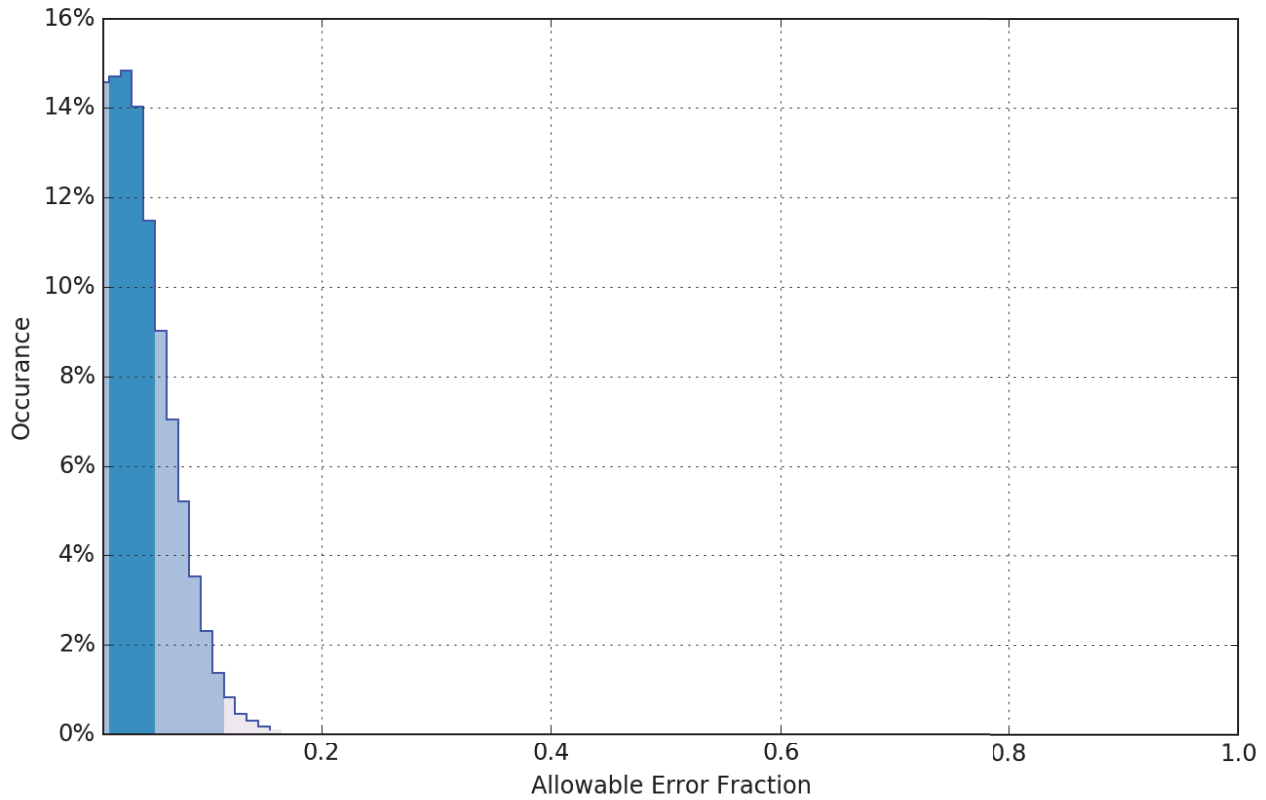


Figure 10: F00759 Mainscheme vs. F00759 Crossline difference surface statistics - observed difference values as a fraction of expected allowable difference values

Uncertainty Standards

Grid source: F00759_MB_VR_MLLW_Final

99.5+% pass (1,597,123 of 1,597,491 nodes), min=0.04, mode=0.15, max=2.53

Percentiles: 2.5%=0.07, Q1=0.13, median=0.15, Q3=0.18, 97.5%=0.33

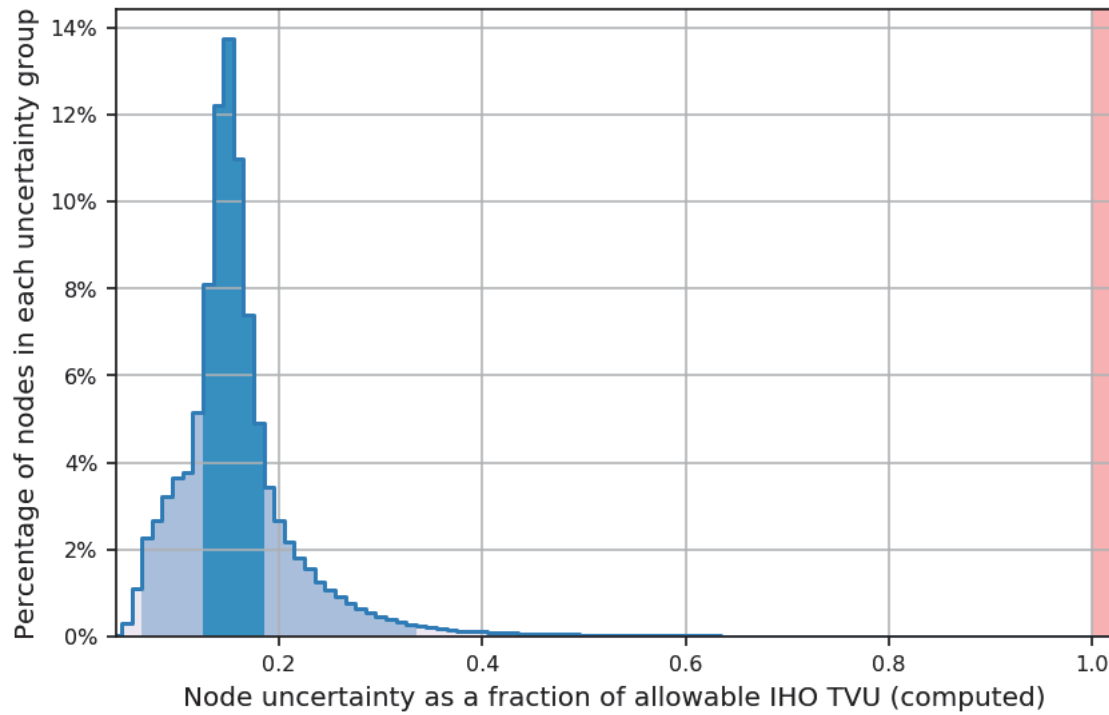


Figure 11: F00759 total vertical uncertainty (TVU) analysis

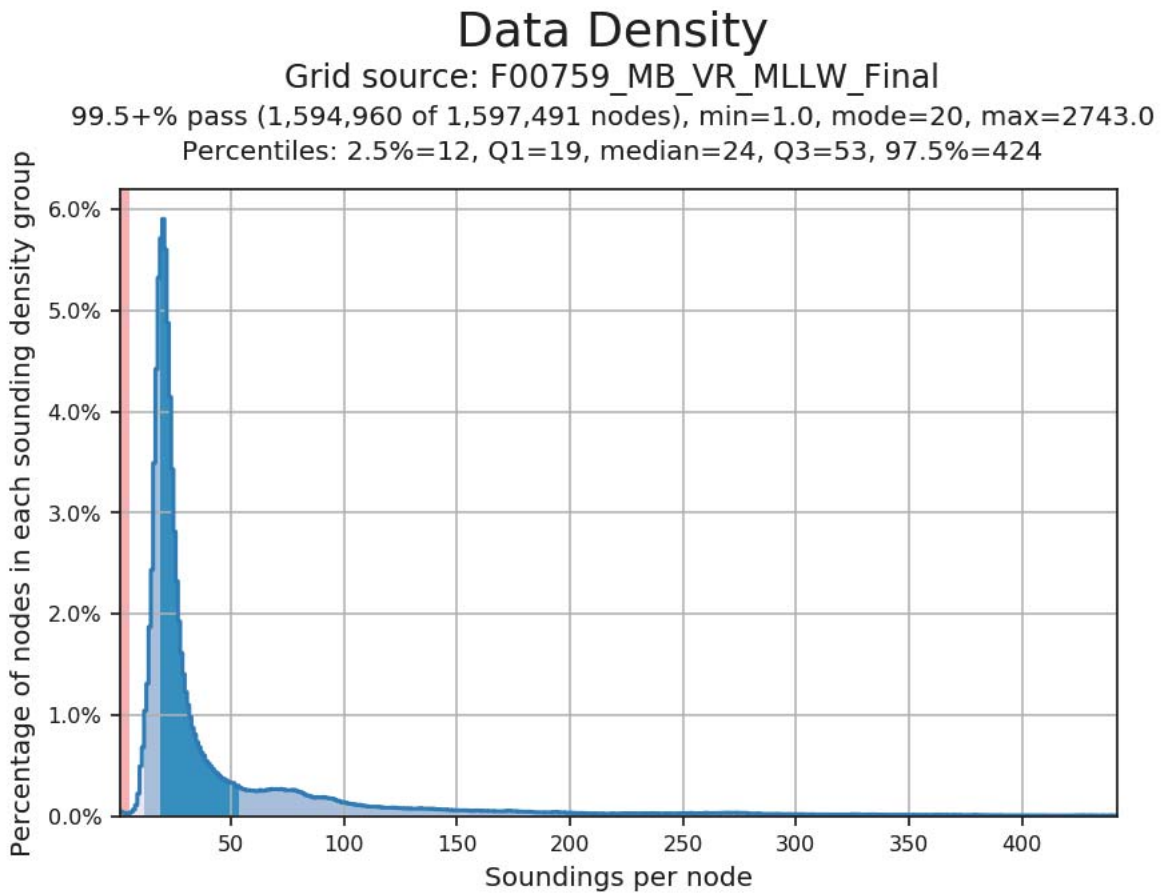


Figure 12: F00759 surface density analysis

F. Results and Recommendations

The following is the largest scale ENC that covers the survey area (Table 2):

Table 2: Largest scale ENC that covers the survey area

ENC	Scale	Edition	Update Application Date	Issue Date	Preliminary?
US5PR16M	1:15000	12	08/16/2016	08/16/2016	NO

A comparison was made between F00759 survey data and Electronic Navigation Chart (ENC) US5PR16M in accordance with methods outlined in the DAPR.

Soundings generated from F00759 survey data generally agree with the ENC charted soundings (Figures 13 and 14). Depth contours generated from F00759 survey data disagreed with the ENC, particularly in the vicinity of Enighed Pond: the 3.6 and 5.4 meter survey contours extend into Enighed Pond whereas the charted depth curves do not; the 9.4m survey contours lie 20-60m inshore of the charted 9.4m depth curve; and the actual 18.4m survey contour

extends 200m inshore of the charted depth curve (Figure 15). The hydrographer recommends that the contours and soundings for ENC US5PR16M be reviewed and updated.

Two charted dangerous wrecks with least depths unknown are located in the vicinity of the approach into Enighed Pond. The areas around the two charted wrecks were surveyed in an effort to verify the existence of the wrecks. Neither wreck was found. The hydrographer recommends that both wrecks be removed from the chart.

All other charted features were positioned accurately. Reference the Final Feature File for further information.

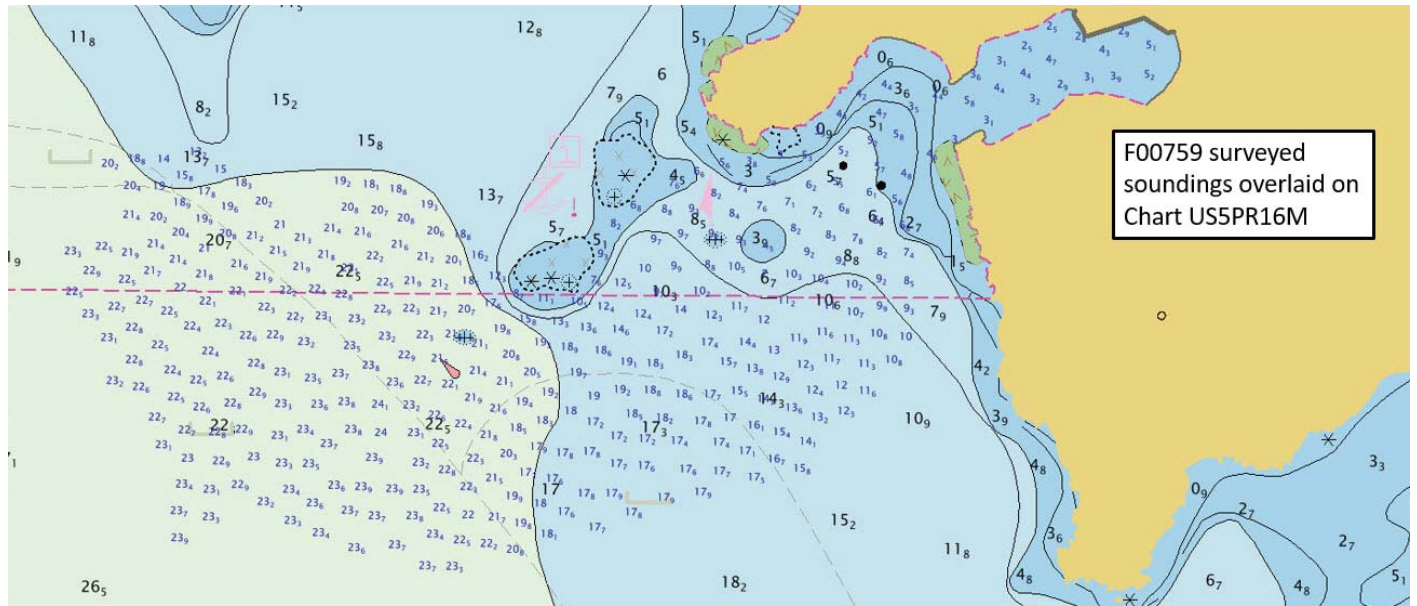


Figure 13: F00759 surveyed soundings overlaid on ENC US5PR16M - F00759 soundings shown in blue and charted soundings shown in black

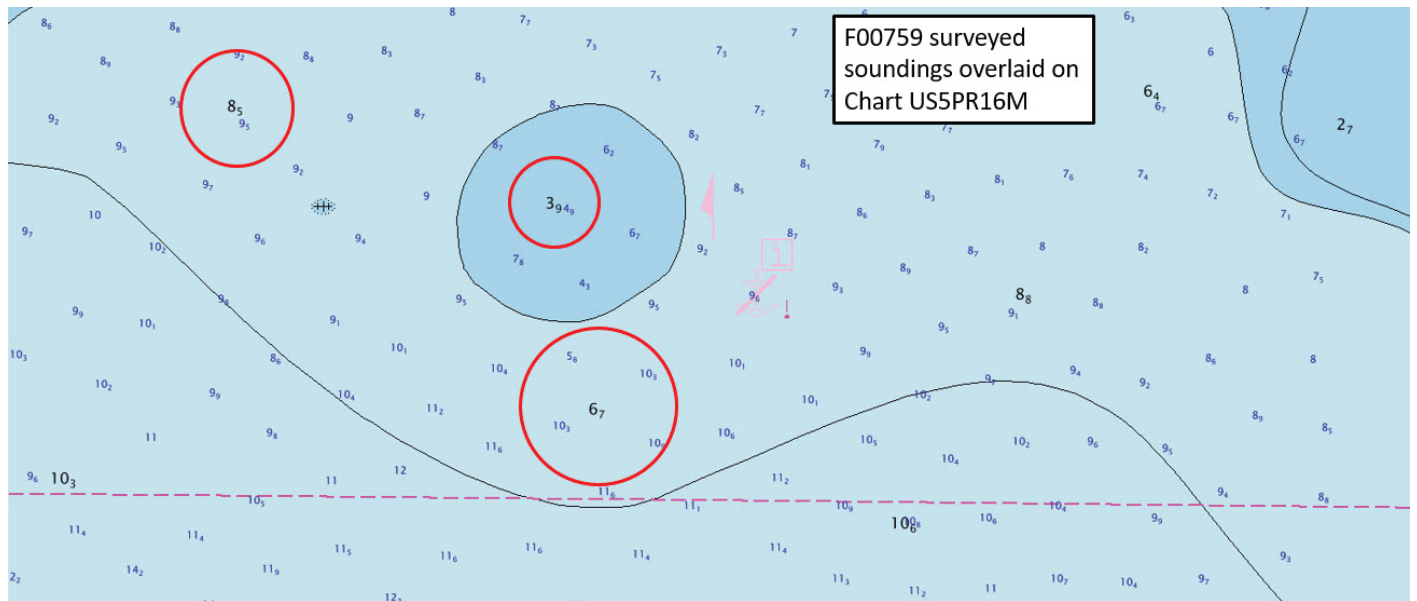


Figure 14: F00759 surveyed soundings showing disagreement to ENC charted soundings

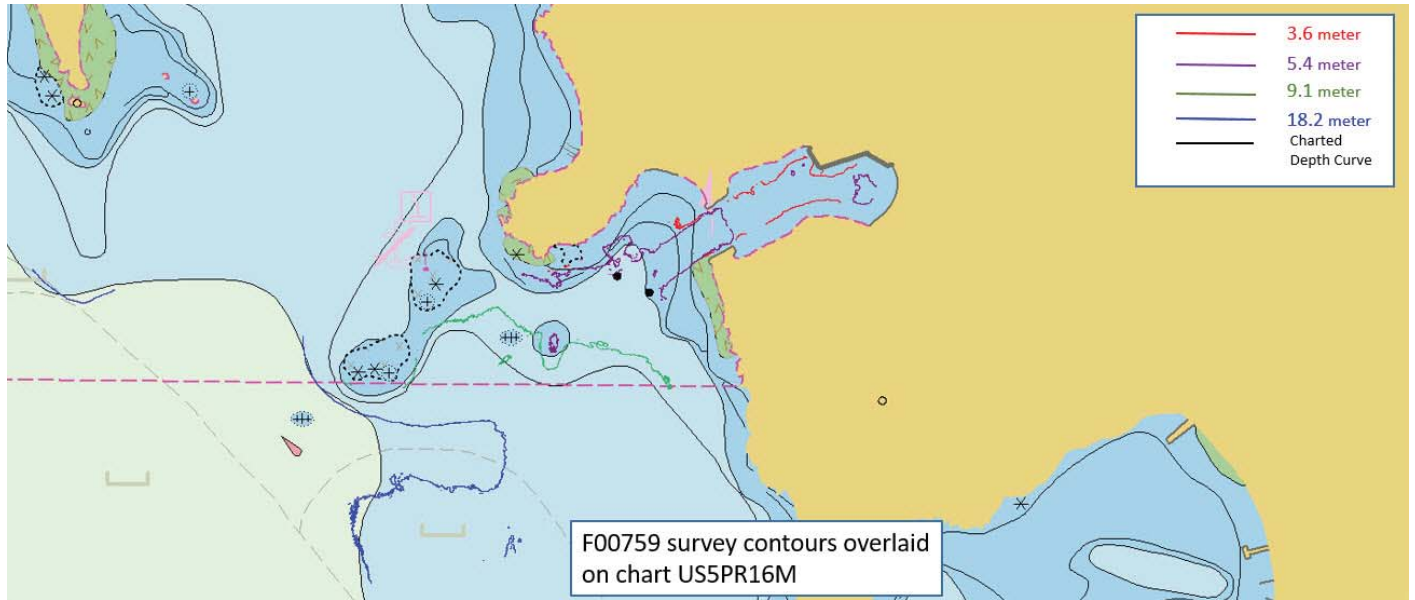


Figure 15: ENC chart US5PR16M comparison - F00759 survey contours are shown in colors comparing to charted depth curves, shown in black

The following surfaces and/or BAGs were submitted to the Processing Branch (Table 3):

Table 3: List of surfaces submitted

Surface Name	Surface Type	Resolution	Depth Range	Surface Parameter	Purpose
F00759_MB_VR_MLLW	CARIS VR Raster Surface (CUBE)	VR m	2.479 m - 24.445 m	NOAA_VR	Object Detection MBES
F00759_MB_VR_MLLW_Final	CARIS VR Raster Surface (CUBE)	VR m	2.479 m - 24.445 m	NOAA_VR	Object Detection MBES
F00759_MBAB_1m_TJ2904_1of1	Backscatter	1.0 m	2.479 m - 24.445 m	N/A	MBES Backscatter

G. Vertical and Horizontal Control

The vertical datum for this project is Mean Lower Low Water.

The vertical control method used for this survey was VDatum.

All F00759 survey data were reduced to MLLW using VDatum methods. The ellipsoid to chart datum separation file used is VDatum_Outline_ACHARE_Polygon_xyWGS84-MLLW_geoid12b.

The horizontal datum for this project is North American Datum 1983. The projection used for this survey is UTM 20N.

Horizontal and vertical positioning were achieved in accordance with practices outlined in the DAPR. Processing and products for Survey F00759 were conducted and completed in NAD 83 per HSSD specification.

H. Additional Results



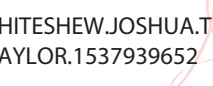
None

I. Approval

As Chief of Party, field operations for this hydrographic survey were conducted under my direct supervision, with frequent personal checks of progress and adequacy. I have reviewed the attached survey data and reports.

All field sheets, this Survey Summary Report, and all accompanying records and data are approved. All records are forwarded for final review and processing to the Processing Branch.

The survey data meets or exceeds requirements as set forth in the NOS Hydrographic Surveys Specifications and Deliverables, Field Procedures Manual, Standing and Letter Instructions, and all HSD Technical Directives. These data are adequate to supersede charted data in their common areas. This survey is complete and no additional work is required with the exception of deficiencies noted in the Survey Summary Report.

Approver Name	Title	Date	Signature
CAPT, Christiaan van Westendorp, NOAA	Commanding Officer / Chief of Party	03/26/2019	 VAN WESTENDORP.CHRISTIAAN.HENRY.1012828175 c=US, o=U.S. Government, ou=DoD, ou=PKI, ou=NOAA, cm=VAN WESTENDORP.CHRISTIAAN.HENRY.1012828175 2019.04.03 15:52:13 -0400'
LT Charles J. Wisotzkey, NOAA	Field Operations Officer	03/26/2019	 Digitally signed by WISOTZKEY.CHARLES.JUSTIN.1300 819660 Date: 2019.04.08 08:31:14 -0400'
Joshua Hiteshew	Chief Hydrographic Survey Technician	03/26/2019	HITESHEW.JOSHUA.TAYLOR.1537939652  Digitally signed by HITESHEW.JOSHUA.TAYLOR .1537939652 Date: 2019.04.03 20:05:16 Z



Charles Wisotzkey - NOAA Federal <charles.j.wisotzkey@noaa.gov>

OPR-I369-TJ_18 F00758 and F00759

1 message

Christina Belton - NOAA Federal <christina.belton@noaa.gov>

Thu, Oct 25, 2018 at 12:54 PM

To: _OMAO MOA CO Thomas Jefferson <co.thomas.jefferson@noaa.gov>, "XO.Thomas Jefferson - NOAA Service Account" <xo.thomas.jefferson@noaa.gov>

Cc: "OPS.Thomas Jefferson - NOAA Service Account" <ops.thomas.jefferson@noaa.gov>, Kyle Ward - NOAA Federal <kyle.ward@noaa.gov>, Jay Nunenkamp - NOAA Federal <jay.nunenkamp@noaa.gov>, Corey Allen - NOAA Federal <corey.allen@noaa.gov>

CO TJ,

Please find attached the F sheet area maps, survey tracker registry numbers, and shape file polygons for Isla de Culebra, P.R. and St John, USVI surveys.

Modified Pls are to follow next week.

We are still working on the environmental compliance, but you will hear from us again as soon as that is complete.

Thank You,

Christina

Christina Belton
Physical Scientist
Operations Branch
Hydrographic Surveys Division
Office of Coast Survey, NOAA

240-533-0057

christina.belton@noaa.gov

3 attachments



EnighedPond.zip

3K



CULEBRA.zip

4K



OPR-I369-PR_18_NewFsheets_2510_2018.zip

677K



Charles Wisotzkey - NOAA Federal <charles.j.wisotzkey@noaa.gov>

Adjustment #2 to sheet acquisition plan & prioritization (OPR-I369-TJ-18 - Puerto Rico)

3 messages

CO Thomas Jefferson <co.thomas.jefferson@noaa.gov>

Mon, Aug 27, 2018 at 12:33 PM

To: Christina Belton - NOAA Federal <christina.belton@noaa.gov>

Cc: Kyle Ward - NOAA Federal <kyle.ward@noaa.gov>, Corey Allen - NOAA Federal <corey.allen@noaa.gov>, Douglas Wood - NOAA Affiliate <douglas.wood@noaa.gov>, "OPS.Thomas Jefferson - NOAA Service Account" <ops.thomas.jefferson@noaa.gov>, Kathryn Pridgen - NOAA Federal <kathryn.pridgen@noaa.gov>

Christina, et al,

FYSA, we hosted Capt Alex Cruz (Puerto Rico South Coast pilot) aboard for a ship tour and project discussion on 22 August 2018. After hearing his thoughts and recommendations on our work along the south shore, as well as consulting with PS Pridgen, we intend/propose to accomplish the following in order of priority:

- Complete Bahia de Guayanilla (H13141, in progress, expected completion sometime next week)
- Acquire critical UKC zones as outlined by PR South Coast pilots in the following order:
 - Ponce (H13143, Bahia de Ponce)
 - Approaches to and channel/pier basin of Jobos (H13147, Bahia de Jobos)
 - Approach channel and pier basin of Las Mareas (H13147, Bahia de Jobos)
 - Yabucoa (F00729)
- Complete acquisition in Bahia de Ponce sheet (H13143)
- Complete acquisition in Bahia de Jobos sheet (H13147)
- Continue acquisition of sheets in remaining PI order of priority with one exception:
 - Guanica (Punta Brea to Punta Verraco, H13142) shifted to last in project priority

Supporting notes:

- The subsidiary bays of each primary UKC area are very exposed to prevailing weather and seas, as well as generally too shallow/confined for effective ship survey. Additionally, daily weather patterns have forced us to begin launch operations early (~0615) in order to take advantage of a limited 3-hour window of reduced wind/seas for less protected work (safety and data quality consideration).
- The above conditions elevate the risk of TJ not completing pilot-priority areas prior to departure in November if we collect/complete surveys in the current PI order.
- Our intended approach shifts the Guanica survey priority, as well as opens multiple survey sheets with a possibility of not completing each sheet's coverage as originally assigned. However, it does virtually guarantee that areas of prime local concern are covered prior to our planned departure.

This plan does not change our intentions for San Juan (H13141, first project priority), to be completed per the waiver re: incorporating Lidar coverage.

Please let us know if you have any questions/concerns. If desired, we can discuss over the phone.

R/

Chris

--

CDR Chris van Westendorp, NOAA

Commanding Officer, NOAA Ship *Thomas Jefferson* (S-222)

co.thomas.jefferson@noaa.gov

Ship Cell1: (757)647-0187 Cell2: (757)418-0629

VoIP: (541)867-8927/8928 Iridium: (808)434-2706

In-Port Norfolk: (757)441-6322/6323

Christina Belton - NOAA Federal <christina.belton@noaa.gov>

Thu, Aug 30, 2018 at 6:01 PM

To: CO Thomas Jefferson <co.thomas.jefferson@noaa.gov>

Cc: Kyle Ward - NOAA Federal <kyle.ward@noaa.gov>, "OPS.Thomas Jefferson - NOAA Service Account" <ops.thomas.jefferson@noaa.gov>, Corey Allen - NOAA Federal <corey.allen@noaa.gov>, Kathryn Pridgen - NOAA Federal <kathryn.pridgen@noaa.gov>, Douglas Wood - NOAA Affiliate <douglas.wood@noaa.gov>

Chris, et al,

It all makes sense to me.

A bit of background: the pilotage areas were added very late in the planning process. When we had the project pre-brief on June 14, I had only just received the areas a couple of days prior.

In the follow-up report to *TJ* on June 19th, I included a map of the areas there. the Project Instructions were also completed and signed on the June 18th.

Based on the traffic patterns plus the pilotage areas, it was clear to me that sheet priority 8, H13147, could have had equal or greater priority to H13141 and H13143. Without knowing which direction *TJ* may travel around the island, I planned the sheets in a logical order based on the O.D., Hydrohealth, and distance efficiency. The middle of the south side, H13150, had the lowest priority all along.

Thank you for taking care of the local high priority ares.

Good luck and let me know if you need anything.

Christina

Christina Belton
Physical Scientist
Operations Branch
Hydrographic Surveys Division
Office of Coast Survey, NOAA
240-533-0057
christina.belton@noaa.gov

[Quoted text hidden]

CO Thomas Jefferson <co.thomas.jefferson@noaa.gov>

Mon, Sep 3, 2018 at 7:48 PM

To: Christina Belton - NOAA Federal <christina.belton@noaa.gov>

Cc: Kyle Ward - NOAA Federal <kyle.ward@noaa.gov>, "OPS.Thomas Jefferson - NOAA Service Account" <ops.thomas.jefferson@noaa.gov>, Corey Allen - NOAA Federal <corey.allen@noaa.gov>, Kathryn Pridgen - NOAA Federal <kathryn.pridgen@noaa.gov>, Douglas Wood - NOAA Affiliate <douglas.wood@noaa.gov>, Olivia Hauser - NOAA Federal <olivia.hauser@noaa.gov>

Copy all, Christina, and thank you for the background. We will proceed as planned below.

V/r,

Chris

CDR Chris van Westendorp, NOAA

Commanding Officer, NOAA Ship *Thomas Jefferson* (S-222)

co.thomas.jefferson@noaa.gov

Ship Cell1: (757)647-0187 Cell2: (757)418-0629

VoIP: (541)867-8927/8928 Iridium: (808)434-2706

In-Port Norfolk: (757)441-6322/6323

[Quoted text hidden]



Charles Wisotzkey - NOAA Federal <charles.j.wisotzkey@noaa.gov>

Blog entry - PR South Coast HSSC meeting

5 messages

CO Thomas Jefferson <co.thomas.jefferson@noaa.gov>

Sun, Sep 9, 2018 at 6:44 PM

To: Kyle Ward - NOAA Federal <kyle.ward@noaa.gov>, Christina Belton - NOAA Federal <christina.belton@noaa.gov>
Cc: "OPS.Thomas Jefferson - NOAA Service Account" <ops.thomas.jefferson@noaa.gov>, Sydney Catoire - NOAA Federal <sydney.catoire@noaa.gov>, Kristen Crossett <kristen.crossett@noaa.gov>, Julia Wallace - NOAA Affiliate <julia.wallace@noaa.gov>, Briana Hillstrom <briana.hillstrom@noaa.gov>

Kyle / Christina,

Please see the attached proposed blog entry for my presentation at the PR South Coast Harbor Safety & Security Committee meeting in Salinas, PR. Many thanks to HSD/AHB for lending me ERT Wallace to attend and support the visit. She's done an outstanding job supporting the ship over the last year or so, and her assistance on this day trip was no exception.

V/R,

Chris

--

CDR Chris van Westendorp, NOAA

Commanding Officer, NOAA Ship *Thomas Jefferson* (S-222)

co.thomas.jefferson@noaa.gov

Ship Cell1: (757)647-0187 Cell2: (757)418-0629

VoIP: (541)867-8927/8928 Iridium: (808)434-2706

In-Port Norfolk: (757)441-6322/6323



20180907 - PR Harbor Safety & Security Meeting blog entry.docx

3115K

Kristen Crossett - NOAA Federal <kristen.crossett@noaa.gov>

Mon, Sep 10, 2018 at 8:14 AM

To: CO Thomas Jefferson <co.thomas.jefferson@noaa.gov>

Cc: Kyle Ward - NOAA Federal <kyle.ward@noaa.gov>, Christina Belton - NOAA Federal <christina.belton@noaa.gov>, "OPS.Thomas Jefferson - NOAA Service Account" <ops.thomas.jefferson@noaa.gov>, Sydney Catoire - NOAA Federal <sydney.catoire@noaa.gov>, Julia Wallace - NOAA Affiliate <julia.wallace@noaa.gov>, Briana Hillstrom <briana.hillstrom@noaa.gov>

Hi Chris,

Thank you for sending! I would like to post this to the blog this week and use it for the Coast Survey newsletter and NOAA AA weekly email. Please let me know if anyone has major edits to the write-up before I proceed.

Thanks again,
Kristen

[Quoted text hidden]

--

Kristen Crossett

Communications Specialist

Office of Coast Survey, NOAA

Office phone: 240-533-0113

Cell phone: 301-325-2113

Like us on [Facebook](#). Follow us on [Twitter](#). Check out our [blog](#).

Christina Belton - NOAA Federal <christina.belton@noaa.gov>

Mon, Sep 10, 2018 at 1:06 PM

To: Kristen Crossett - NOAA Federal <kristen.crossett@noaa.gov>

Cc: CO Thomas Jefferson <co.thomas.jefferson@noaa.gov>, Kyle Ward - NOAA Federal <kyle.ward@noaa.gov>, "OPS.Thomas Jefferson - NOAA Service Account" <ops.thomas.jefferson@noaa.gov>, Sydney Catoire - NOAA Federal <sydney.catoire@noaa.gov>, Julia Wallace - NOAA Affiliate <julia.wallace@noaa.gov>, Briana Hillstrom <briana.hillstrom@noaa.gov>, Corey Allen - NOAA Federal <corey.allen@noaa.gov>

All,

Thank you for sharing your newsletter article. I don't have any editing suggestions. I do see further development stories from this one. For instance, referencing the third and fourth paragraphs, how new nautical chart data helps to recover businesses effected by the storm. This being DOC, there ought to be someone covering those metrics if not already within OCS. Do we know who that is? Will they include the specific work of *TJ*?

My second thought has to do with the concluding sentence. Perhaps there is another blurb, to include with the economics blog that can be written specifically from the point of view of a local business person and there direct experience with *TJ* data effecting their business. Those are follow up ideas.

Regards,
Christina

Christina Belton
Physical Scientist
Operations Branch
Hydrographic Surveys Division
Office of Coast Survey, NOAA
240-533-0057
christina.belton@noaa.gov

[Quoted text hidden]

Kristen Crossett - NOAA Federal <kristen.crossett@noaa.gov>

Wed, Sep 12, 2018 at 1:40 PM

To: CO Thomas Jefferson <co.thomas.jefferson@noaa.gov>

Cc: Kyle Ward - NOAA Federal <kyle.ward@noaa.gov>, Christina Belton - NOAA Federal <christina.belton@noaa.gov>, "OPS.Thomas Jefferson - NOAA Service Account" <ops.thomas.jefferson@noaa.gov>, Sydney Catoire - NOAA Federal <sydney.catoire@noaa.gov>, Julia Wallace - NOAA Affiliate <julia.wallace@noaa.gov>, Briana Hillstrom <briana.hillstrom@noaa.gov>

Chris,

Thanks again for the great blog post. It is now [live](#) and highlighted in our [newsletter](#). We also shared it on [FB](#) and [Twitter](#).

Kristen

On Sun, Sep 9, 2018 at 6:44 PM, CO Thomas Jefferson <co.thomas.jefferson@noaa.gov> wrote:

[Quoted text hidden]

[Quoted text hidden]

CO Thomas Jefferson <co.thomas.jefferson@noaa.gov>

Wed, Sep 12, 2018 at 2:28 PM

To: Kristen Crossett - NOAA Federal <kristen.crossett@noaa.gov>

Cc: Kyle Ward - NOAA Federal <kyle.ward@noaa.gov>, Christina Belton - NOAA Federal <christina.belton@noaa.gov>, "OPS.Thomas Jefferson - NOAA Service Account" <ops.thomas.jefferson@noaa.gov>, Sydney Catoire - NOAA Federal <sydney.catoire@noaa.gov>, Julia Wallace - NOAA Affiliate <julia.wallace@noaa.gov>, Briana Hillstrom <briana.hillstrom@noaa.gov>

Many thanks, Kristen!

V/R,

Chris

CDR Chris van Westendorp, NOAA
Commanding Officer, NOAA Ship *Thomas Jefferson* (S-222)

4/12/2019

National Oceanic and Atmospheric Administration Mail - Blog entry - PR South Coast HSSC meeting

co.thomas.jefferson@noaa.gov

Ship Cell1: (757)647-0187 Cell2: (757)418-0629

VoIP: (541)867-8927/8928 Iridium: (808)434-2706

In-Port Norfolk: (757)441-6322/6323

[Quoted text hidden]



Charles Wisotzkey - NOAA Federal <charles.j.wisotzkey@noaa.gov>

Coast Pilot Review Report for OPR-I369-TJ-18 Puerto Rico Ports

1 message

Charles Wisotzkey - NOAA Federal <charles.j.wisotzkey@noaa.gov> Fri, Apr 12, 2019 at 10:54 AM
To: OCS NDB - NOAA Service Account <ocs.ndb@noaa.gov>, _NOS OCS NSD Coast Pilot <coast.pilot@noaa.gov>
Cc: Christina Belton - NOAA Federal <christina.belton@noaa.gov>, _OMAO MOA OPS Thomas Jefferson <ops.thomas.jefferson@noaa.gov>, _OMAO MOA ChiefST Thomas Jefferson <chiefst.thomas.jefferson@noaa.gov>

All,

Please see attached Coast Pilot Review Notes (OPR-I369-TJ-18_Coast Pilot Review Report.pdf).

The only suggested edits concern the entry for the port of Las Mareas and are in Paragraph 508.

Entries referencing depths should be updated in accordance with submitted bathy grids.

--

LT Charles J. Wisotzkey, NOAA
NOAA Ship Thomas Jefferson (S-222)

2 attachments

 **OPR-I369-TJ-18CoastPilotReport_original.pdf**
2311K

 **OPR-I369-TJ-18_Coast Pilot Review Report.pdf**
2264K



ChiefST.Thomas Jefferson - NOAA Service Account <chiefst.thomas.jefferson@noaa.gov>

Survey Outlines for project OPR_I369_TJ_18

1 message

Charles Wisotzkey - NOAA Federal <charles.j.wisotzkey@noaa.gov>

Wed, Nov 7, 2018 at 7:30 PM

To: survey.outlines@noaa.gov

Cc: Christina Belton - NOAA Federal <christina.belton@noaa.gov>, _OMAO MOA OPS Thomas Jefferson <ops.thomas.jefferson@noaa.gov>, _OMAO MOA ChiefST Thomas Jefferson <chiefst.thomas.jefferson@noaa.gov>, michael hewlett - NOAA Federal <michael.hewlett@noaa.gov>, Joshua Hiteshew - NOAA Federal <joshua.hiteshew@noaa.gov>, Kevin Brown - NOAA Federal <kevin.w.brown@noaa.gov>, Sydney Catoire - NOAA Federal <sydney.catoire@noaa.gov>, Jacquelyn Putnam - NOAA Federal <jacquelyn.putnam@noaa.gov>

All concerned,

Survey outlines for all surveys conducted by TJ on project OPR_I369_TJ_18 attached; the files can also be downloaded from the following link:

<https://drive.google.com/open?id=1QDb9YsXRQvIXX8y6o0ct2bMhJjQ-uhfm>

- Charles

--

LT Charles J. Wisotzkey, NOAA
NOAA Ship Thomas Jefferson (S-222)

 **OPR_I369_TJ_18_Survey_Outlines_20181107.zip**
8471K



Charles Wisotzkey - NOAA Federal <charles.j.wisotzkey@noaa.gov>

Fwd: CO of TJ presenting at PR Harbor Safety & Security Committee tomorrow

3 messages

Kyle Ward - NOAA Federal <kyle.ward@noaa.gov>

Thu, Sep 6, 2018 at 4:02 PM

To: _NMAO MOA OPS Thomas Jefferson <CO.Thomas.Jefferson@noaa.gov>, _NMAO MOA OPS Thomas Jefferson <OPS.Thomas.Jefferson@noaa.gov>

FYI.

Kyle R. Ward
Southeast Navigation Manager
NOAA Office of Coast Survey
301.651.4852 cell

----- Forwarded message -----

From: **Kyle Ward - NOAA Federal** <kyle.ward@noaa.gov>

Date: Thu, Sep 6, 2018 at 3:58 PM


Subject: Re: CO of TJ presenting at PR Harbor Safety & Security Committee tomorrow

To: Kristen Crossett - NOAA Federal <kristen.crossett@noaa.gov>

Cc: Richard T Brennan <richard.t.brennan@noaa.gov>, Shep Smith <shep.smith@noaa.gov>

Kristen,

I presented to this committee at their last meeting. They were very thankful for the work the TJ did post storm and were very excited to learn about the planned surveys. I don't think there are any red flags. Two items that may come are getting access to preliminary plots of the data and use of CiraCOOS survey assets being used to open ports after a storm.

We have already received request for preliminary data from [Inchcape Shipping Services](#)  and I am working with Christina Belton to meet their request.

The USCG has close ties the [CariCOOS](#). They are doing some pretty cool operational forecasting for the pilots. They also have a nice recreational SSS system. The USCG wants to be able to use it to open port after an storm. I had a chance to look at their set up on my last visit and did not feel it was worth pursuing based on the type of gear they had.

The Ships command has already met the South Coast Pilot Capt. Cruz and I provided them info and pictures of the USCG command and staff that may be at the meeting. I think this meeting should go well and build a lot of goodwill.

Let me know if you have any questions.

Regards,

Kyle R. Ward
Southeast Navigation Manager
NOAA Office of Coast Survey
301.651.4852 cell

On Thu, Sep 6, 2018 at 1:37 PM Kristen Crossett - NOAA Federal <kristen.crossett@noaa.gov> wrote:

TJ CO emailed to see if there are any specific points OCS HQ feels need to be made during his presentation of TJ's survey work in PR as well as any sensitive issues he should be aware of. I am not aware of any but wanted to check in with you before responding.

Thanks,
Kristen

--

Kristen Crossett
Communications Specialist
[Office of Coast Survey, NOAA](#)
Office phone: 240-533-0113
Cell phone: 301-325-2113
Like us on [Facebook](#). Follow us on [Twitter](#). Check out our [blog](#).

 **image001.png**
1K

CO Thomas Jefferson <co.thomas.jefferson@noaa.gov>

Sun, Sep 9, 2018 at 7:09 PM

To: Kyle Ward - NOAA Federal <kyle.ward@noaa.gov>, Christina Belton - NOAA Federal <christina.belton@noaa.gov>

Cc: "OPS.Thomas Jefferson - NOAA Service Account" <ops.thomas.jefferson@noaa.gov>, Richard Brennan - NOAA Federal <Richard.T.Brennan@noaa.gov>, Corey Allen - NOAA Federal <corey.allen@noaa.gov>

Kyle / Christina,

Some additional notes (not for public consumption) from my visit to the PR South Coast HSSC meeting:

- Very productive meeting and a worthwhile visit. Very tight group of attendees that appear to communicate and coordinate well with each other
- My presentation was the last of the morning (just before lunch) but appeared to garner the most interest/attention (not tooting my own horn here - ask Julia)
- South Coast stakeholders were interested in our preliminary products, and I broadcast that we would be happy to provide similar preliminary / not for navigation use products upon completion and shipboard QA/QC of each survey
- Gave a brief overview of our intended plan to survey pilot-identified critical areas before going back and filling in remainder of the applicable open survey sheets.
- I did mention the overlapping LIDAR surveys that would likely complete bottom coverage in the areas not picked up by TJ on this project.
- CariCOOS was only lightly represented at the meeting by Capt Cruz and Mr Torres. No questions from them or USCG re: suitability of recreational SSS for port surveys. However, I spoke with Dr. Miguel Canals Silander over the phone, and we will try to find an in-port Friday for he and members of his team to come and tour the ship; very thankful (along with Mr. Torres) for recovering their buoy last year.
- Mr. Ernesto Diaz (PR DNER Director of Coastal Zone Management Program) was very excited about our work and its applicability to shoreline erosion, the topic of his presentation to the group (more specifically Climate Change impact on PR)
- Coast Guard Captain of the Port and staff interested in potentially getting some sort of basic channel clearance survey capability, as pre-storm communication and resource planning from USCG D7 is normally behind real-time needs on the island and normally conflicts with higher priority resource needs and staging on mainland U.S.
- Numerous industry representatives and other port stakeholders offered their services to us and our small boats if needed.
- Maritime and economic politics here are a bit interesting. As San Juan is the power center for the island, the South Coast, while very tight knit, seems to harbor a bit of competition bordering on resentment for the North Coast. Lots of talk of corruption in the capital. No action required, just an observation.
- One Customs and Border Protection officer described to me a privately-funded (XPrize?) local competition with a \$6M prize to develop autonomous underwater survey technology for deep water work.
- One gentleman (owns a cable laying/finding business I believe) solicited me for possible recommendations on a good deep water system to find underwater cables. I told him that TJ is very happy with our current Kongsberg systems, but they would likely not be sufficient for his needs (>3000 meters). Sounds like he is looking at ROV systems, supported by his Dynamic Positioning vessel(s).

Please let me know if you have any questions / concerns.

V/R,

Chris

CDR Chris van Westendorp, NOAA

Commanding Officer, NOAA Ship *Thomas Jefferson* (S-222)

co.thomas.jefferson@noaa.gov

Ship Cell1: (757)647-0187 Cell2: (757)418-0629

VoIP: (541)867-8927/8928 Iridium: (808)434-2706

In-Port Norfolk: (757)441-6322/6323

[Quoted text hidden]

Christina Belton - NOAA Federal <christina.belton@noaa.gov>

Sun, Sep 9, 2018 at 8:17 PM

To: _OMAO MOA CO Thomas Jefferson <co.thomas.jefferson@noaa.gov>

Cc: Kyle Ward - NOAA Federal <kyle.ward@noaa.gov>, "OPS.Thomas Jefferson - NOAA Service Account"

<ops.thomas.jefferson@noaa.gov>, Richard Brennan <richard.t.brennan@noaa.gov>, Corey Allen - NOAA Federal <corey.allen@noaa.gov>

CO,

I recognize Mr. Ernesto Diaz's name from the Planning Board's CZMA concurrence I received in July (attached). I am relieved to know he was present at the South Coast HSSC meeting and even more so that he was enthusiastic. The environmental compliance HSD sought for NHPA, CZMA, and USFWS took longer than usual and Jay Nunenkamp told me that Office of Coast Survey had never sought EC with Puerto Rico until this project. Concurrence was not automatic as it often has been in other states. The agencies had additional questions and some additional forms to complete. I was asked to correspond by USPS. Letters from P.R. were stamped six weeks prior to me receiving them. I sought concurrence three times: once initially through our standard email procedures; a second time to follow up on their additional question and to reply by USPS, and a third time for Yabucoa because that was an additional area added several weeks later. After the third determination, we received concurrence.

Your meeting seems very positive. Thank you for the update.

Christina

Christina Belton

Physical Scientist

Operations Branch

Hydrographic Surveys Division

Office of Coast Survey, NOAA

240-533-0057christina.belton@noaa.gov

[Quoted text hidden]

**CZ-2018-0611-040 (FCC).pdf**

769K



Charles Wisotzkey - NOAA Federal <charles.j.wisotzkey@noaa.gov>

Fwd: RE: PROGRESS NOAA SHIP THOMAS JEFFERSON

5 messages

Kyle Ward - NOAA Federal <kyle.ward@noaa.gov>

Fri, Aug 31, 2018 at 9:45 AM

To: Christina Belton - NOAA Affiliate <christina.belton@noaa.gov>, _NMAO MOA OPS Thomas Jefferson
<CO.Thomas.Jefferson@noaa.gov>, _NMAO MOA OPS Thomas Jefferson <OPS.Thomas.Jefferson@noaa.gov>

Hi Christina,

We are getting some good feedback from our maritime stake holders on the South Coast of PR. I forwarded the progress sketch and folks are already itching for the data. What is our current policy for providing preliminary data so I can get back with them?

Best Regards,
Kyle

Kyle R. Ward
Southeast Navigation Manager
NOAA Office of Coast Survey
301.651.4852 cell

----- Forwarded message -----

From: **ISS San Juan ISS-San Juan** <ISS.SanJuan@iss-shipping.com>

Date: Thu, Aug 30, 2018 at 4:48 PM

Subject: RE: RE: PROGRESS NOAA SHIP THOMAS JEFFERSON

To: kyle.ward@noaa.gov <kyle.ward@noaa.gov>

Cc: Recursos Externos Municipio Ponce <ponce_externalresources@yahoo.com>, ISS San Juan ISS-San Juan <ISS.SanJuan@iss-shipping.com>, Eric Gonzalez ISS-San Juan <Eric.Gonzalez@iss-shipping.com>

Good Afternoon Kyle,

Trust everything is going well.

We are wondering when could we expect final reports for sounding in Guayanilla area.

We have a few clients asking for the updated soundings and we would like to give the estimated date for the availability of the same.

Looking forward to hear from you soon

Best regards,

Ángel T. Colón González

Marine Service Coordinator

Inchcape Shipping Services 

(As Agents Only)

Office: +1 787 620 2030

Fax: +1 787 620 0001

Mobile: +1 787 679 3151

Email: iss.sanjuan@iss-shipping.com

Website: www.iss-shipping.com

Address: 1064 Ave.Ponce de Leon,

Suite 301 San Juan, PR 00907



From: Recursos Externos Municipio Ponce [mailto:ponce_externalresources@yahoo.com]

Sent: Thursday, August 30, 2018 2:55 PM

To: ISS San Juan ISS-San Juan <ISS.SanJuan@iss-shipping.com>

Subject: Re: RE: PROGRESS NOAA SHIP THOMAS JEFFERSON

Hello!

You will have to ask Mr. Kyle Ward, Southeast Navigation Manager from NOAA Office of Coast Survey. His email is kyle.ward@noaa.gov

V/r

Maria

RECURSOS EXTERNOS

MUNICIPIO AUTONOMO DE PONCE

PO BOX 331709

PONCE, PUERTO RICO 00733-1709

TEL. (787) 284-4141 Tere Ext. 2013

FAX. (787)842-4282

E-MAIL: ponce_externalresources@yahoo.com

NOTICE OF CONFIDENTIALITY: This e-mail, including any attachments, is intended only for the use of the individual or entity to which it is addressed and may contain confidential information that is legally privileged and exempt from disclosure under applicable law. If the reader of this message is not the intended recipient, you are notified that any review, use, disclosure, distribution or copying of this communication is strictly prohibited. If you have received this communication in error, please contact the sender by reply e-mail and destroy all copies of the original message.

AVISO DE CONFIDENCIALIDAD: El uso de este correo electrónico, incluyendo cualquier anexo, está permitido solamente para el individuo u entidad a la cual fue dirigido y puede contener información confidencial cuyo uso y divulgación están protegidos por ley. Si la persona que lee este mensaje no es la persona a la cual éste fue dirigido, se le notifica que cualquier revisión, uso, divulgación, distribución o copia de esta comunicación está estrictamente prohibido. Si usted ha recibido esta comunicación por error, por favor notifique al remitente por correo electrónico y destruya todas las copias del mensaje original.

On Thursday, August 30, 2018, 2:18:26 PM AST, ISS San Juan ISS-San Juan <ISS.SanJuan@iss-shipping.com> wrote:

Good Day Maria,

Below noted and well received.


When could we expect final reports?

Thanks for usual cooperation

Best regards,

Ángel T. Colón González

Marine Service Coordinator

Inchcape Shipping Services 

(As Agents Only)

Office: +1 787 620 2030

Fax: +1 787 620 0001

Mobile: +1 787 679 3151

Email: iss.sanjuan@iss-shipping.com

Website: www.iss-shipping.com

Address: 1064 Ave.Ponce de Leon,

Suite 301 San Juan, PR 00907



From: Recursos Externos Municipio Ponce [mailto:ponce_externalresources@yahoo.com]
Sent: Thursday, August 30, 2018 9:16 AM
To: Hans Rutzen <hnutzen@buckeye.com>; r.iglesias@bts-pr.com; Luis O Marini <lmardini67@hotmail.com>; papoacosta46@hotmail.com; jbanch@gmail.com; pedrofrivera@americantugspr.com; Gilberto Espinosa <ponce@gulpharbor.com>; ponce@gulpharbor.com; Daniel Montes <capitanmontes@yahoo.com>; operpce@ayacol.com; charlietequila@yahoo.com; Eric Gonzalez ISS-San Juan <Eric.Gonzalez@ISS-Shipping.com>; Zaham Rubio <zaham_rubio@hotmail.com>; ocatinchi.uscgaux@gmail.com; agency.mgr.pce@ayacol.com; Julito Martinez <agency.pce@ayacol.com>; southeastpilots@gmail.com; hector.colon@ponce.pr.gov; cepadillarodz@hotmail.com; sea1dragon@aol.com; rafael_rafael53@hotmail.com; sprtowing@coqui.net; operations@bts-pr.com; Luis A. Delgado-Guzmán <luis.delgado@ponce.pr.gov>; ISS San Juan ISS-San Juan <ISS.SanJuan@iss-shipping.com>; jeff@matspr.com; e.braffett@perezyciapr.com; Juan B. Nieves <jbnieves16@gmail.com>; Jose A Martinez <mtzcspr@gmail.com>; Nestor Rivera <riverane@esi-energy.com>; cxacosta@gmail.com; jim@matspr.com; Luis H Gonzalez <l.gonzalez@bts-pr.com>; ehbusquets@gmail.com; tomp@morantug.com; capt.iglesias@bts-pr.com; anavitatemarine@aol.com
Subject: PROGRESS NOAA SHIP THOMAS JEFFERSON

Good morning,

Included please find a PDF document provided by Mr. Kyle Ward, Southeast Navigation Manager from NOAA Office of Coast Survey, of the progress made so far by the crew of the NOAA Ship Thomas Jefferson.

Best regards,

Maria T. Vicens

Secretary SCHSSC

OFICINA DE RECURSOS EXTERNOS

MUNICIPIO AUTONOMO DE PONCE

PO BOX 331709

PONCE, PUERTO RICO 00733-1709

TEL. (787) 284-4141 Tere Ext. 2013

FAX. (787)842-4282

E-MAIL: ponce_externalresources@yahoo.com

NOTICE OF CONFIDENTIALITY: This e-mail, including any attachments, is intended only for the use of the individual or entity to which it is addressed and may contain confidential information that is legally privileged and exempt from disclosure under applicable law. If the reader of this message is not the intended recipient, you are notified that any review, use, disclosure, distribution or copying of this communication is strictly prohibited. If you have received this communication in error, please contact the sender by reply e-mail and destroy all copies of the original message.

AVISO DE CONFIDENCIALIDAD: El uso de este correo electrónico, incluyendo cualquier anexo, está permitido solamente para el individuo u entidad a la cual fue dirigido y puede contener información confidencial cuyo uso y divulgación están protegidos por ley. Si la persona que lee este mensaje no es la persona a la cual éste fue dirigido, se le notifica que cualquier revisión, uso, divulgación, distribución o copia de esta comunicación está estrictamente prohibido. Si usted ha recibido esta comunicación por error, por favor notifique al remitente por correo electrónico y destruya todas las copias del mensaje original.

(As Agents Only)

Inchcape Shipping Services - A Smoother, Smarter Ocean

This e-mail (including any attachments) may contain confidential, proprietary or privileged information. It may be read, copied and used only by the intended recipient. If you are not the intended recipient of this message you must not use, disseminate or copy it in any form or take any action in reliance on it. If you have received this e-mail in error, please notify the sender immediately by return e-mail. Please then delete the e-mail and any copies of it and do not disclose the contents to any person. We believe but do not warrant, that this e-mail and any attachments are virus free. You should take full responsibility for virus checking. Inchcape Shipping Services and its affiliated companies reserve the right to monitor all email communications through their internal and external networks.

ISS may contact you from time to time about products and services that we feel are relevant to your business. If you do not want to receive marketing emails from ISS, please [Email Us!](#)

v1.02 MC-EOL iss-shipping.com default

CO Thomas Jefferson <co.thomas.jefferson@noaa.gov>

Wed, Sep 5, 2018 at 8:48 PM

To: Kyle Ward - NOAA Federal <kyle.ward@noaa.gov>, Christina Belton - NOAA Affiliate <christina.belton@noaa.gov>

Cc: [_NMAO MOA OPS Thomas Jefferson](#) <OPS.Thomas.Jefferson@noaa.gov>

Hi, Kyle,

I will be attending the South Coast Harbor Safety & Security Meeting this coming Friday (7 Sept), and I intend to bring a couple of plots of our preliminary data for Bahia de Guayanilla and Bahia de Tallaboa. We usually provide a chartlet that incorporates a transparent DTM and preliminary sounding set labeled NOT FOR NAVIGATION or something to that effect. If there are specific requests, we can certainly work with Christina to determine what's appropriate and releasable.

Thanks,

Chris

CDR Chris van Westendorp, NOAA

Commanding Officer, NOAA Ship *Thomas Jefferson* (S-222)

co.thomas.jefferson@noaa.gov

Ship Cell1: (757)647-0187 Cell2: (757)418-0629

VoIP: (541)867-8927/8928 Iridium: (808)434-2706

In-Port Norfolk: (757)441-6322/6323

[Quoted text hidden]

Christina Belton - NOAA Federal <christina.belton@noaa.gov>

Wed, Sep 5, 2018 at 9:48 PM

To: CO Thomas Jefferson <co.thomas.jefferson@noaa.gov>, Kyle Ward - NOAA Federal <kyle.ward@noaa.gov>, _NMAO MOA OPS Thomas Jefferson <OPS.Thomas.Jefferson@noaa.gov>

Good Evening All,

If there are normal products you provide, and comfortable the products are safe to deliver publicly, then it seems it would be very helpful and good for future project communication as well.

I did follow up on standard policy for HSD to release data early. It would depend on the data but the the formal policy is CAPT Brennan would have to sign a release statement. He will want to know who are the exact stakeholders and what exactly is being released. But then again, that is without know what data HSD is considering.

In hurricane response situations, the data will goes to stakeholders directly from the ship. For an early release of data that is not response, data would still come from the ship because AHB will not have received he data yet to generate products in an early release.

But it seems you are providing standard printed products only in this case.

You might also consider providing a GeoPDFs or GEOTiff that is correctly referenced to the location, if you have not already, if you want to provide survey area electronically.

If you have data you are not sure about releasing, and wish for HSD OPS to consider, then please let me know and I will follow up.

Regards,
Christina

Christina Belton
Physical Scientist
Operations Branch
Hydrographic Surveys Division
Office of Coast Survey, NOAA
240-533-0057
christina.belton@noaa.gov

[Quoted text hidden]

Kyle Ward - NOAA Federal <kyle.ward@noaa.gov>

Thu, Sep 6, 2018 at 8:04 AM

To: Christina Belton - NOAA Affiliate <christina.belton@noaa.gov>

Cc: _NMAO MOA OPS Thomas Jefferson <co.thomas.jefferson@noaa.gov>, _NMAO MOA OPS Thomas Jefferson <OPS.Thomas.Jefferson@noaa.gov>

CO,

I think the normal (Not for Navigation) plots with DTM and soundings will meet their needs. The meeting goes for awhile so there is time during the breaks to look over plotter sized images. They also usually have a projector so you could put together a few slides if you have found anything interesting. The food is always good, most everyone speaks English but if you have a Spanish speaker on board to bring with you it would build plenty of good will and make it easier to mingle.

FYI on some personnel you may meet. The command staff know me but have not spend much time with them. The other USCG staff know me well and they were the ones I was passing most of your information to during the storm last year. You will probably have lots to talk about with them. I will give them a heads up you will be in attendance and send you a picture so you can put names with faces.

[USCG Sector San Juan Command](#)

Prevention Chief is CDR Janet Espino-Young
Waterways Chief LCDR David Otani
USCG Port Recovery Specialist Civilian (he know everyone) Izzy Torrez

Kyle R. Ward

Southeast Navigation Manager
NOAA Office of Coast Survey
301.651.4852 cell

[Quoted text hidden]

2 attachments



image002.jpg
7K

 **image001.png**
1K

Kyle Ward - NOAA Federal <kyle.ward@noaa.gov>

Thu, Sep 6, 2018 at 9:25 PM

To: Christina Belton - NOAA Affiliate <christina.belton@noaa.gov>

Cc: _NMAO MOA OPS Thomas Jefferson <co.thomas.jefferson@noaa.gov>, _NMAO MOA OPS Thomas Jefferson <OPS.Thomas.Jefferson@noaa.gov>

They have a new Prevention Chief as of today. The new one is [LCDR Jose Rosario](#).

Kyle R. Ward
Southeast Navigation Manager
NOAA Office of Coast Survey
301.651.4852 cell

[Quoted text hidden]



Charles Wisotzkey - NOAA Federal <charles.j.wisotzkey@noaa.gov>

Maersk 2pm 10/26

8 messages

Christina Belton - NOAA Federal <christina.belton@noaa.gov>

Fri, Oct 26, 2018 at 11:18 AM

To: _OMAO MOA CO Thomas Jefferson <co.thomas.jefferson@noaa.gov>

Cc: "XO.Thomas Jefferson - NOAA Service Account" <xo.thomas.jefferson@noaa.gov>, Corey Allen - NOAA Federal <corey.allen@noaa.gov>, Kyle Ward - NOAA Federal <kyle.ward@noaa.gov>, Charles Wisotzkey - NOAA Federal <charles.j.wisotzkey@noaa.gov>, Anthony Klemm - NOAA Federal <anthony.r.klemm@noaa.gov>

CO,

Rob Towley from Maersk will join a call with James Miller, Kyle Ward and myself at 2pm.

James will present his data findings on what exists for the two new F sheets already.

Our aim is to find out a bit more about what Maersk needs for data.

Maybe we already have much of what they need.

According to AIS ship traffic, *TJ* is alongside in San Juan right now. I am not sure how accurate that is.

Would you like to join the call today at 2pm, or would you prefer to receive a summary after the call?

Thank You,
Christina Belton

Christina Belton
Physical Scientist
Operations Branch
Hydrographic Surveys Division
Office of Coast Survey, NOAA
240-533-0057
christina.belton@noaa.gov

Christina Belton - NOAA Federal <christina.belton@noaa.gov>

Fri, Oct 26, 2018 at 11:20 AM

To: _OMAO MOA CO Thomas Jefferson <co.thomas.jefferson@noaa.gov>

Cc: "XO.Thomas Jefferson - NOAA Service Account" <xo.thomas.jefferson@noaa.gov>, Corey Allen - NOAA Federal <corey.allen@noaa.gov>, Kyle Ward - NOAA Federal <kyle.ward@noaa.gov>, Charles Wisotzkey - NOAA Federal <charles.j.wisotzkey@noaa.gov>, Anthony Klemm - NOAA Federal <anthony.r.klemm@noaa.gov>

** Townley

Christina Belton
Physical Scientist
Operations Branch
Hydrographic Surveys Division
Office of Coast Survey, NOAA
240-533-0057
christina.belton@noaa.gov

[Quoted text hidden]

CO Thomas Jefferson <co.thomas.jefferson@noaa.gov>

Fri, Oct 26, 2018 at 11:31 AM

To: Christina Belton - NOAA Federal <christina.belton@noaa.gov>

Cc: "XO.Thomas Jefferson - NOAA Service Account" <xo.thomas.jefferson@noaa.gov>, Corey Allen - NOAA Federal <corey.allen@noaa.gov>, Kyle Ward - NOAA Federal <kyle.ward@noaa.gov>, Charles Wisotzkey - NOAA Federal <charles.j.wisotzkey@noaa.gov>, Anthony Klemm - NOAA Federal <anthony.r.klemm@noaa.gov>

Christina,

I'm going on leave at 1400, but I will pass on to Meghan (ACO) to call-in. She will be monitoring the CO email account while I'm away.

Thanks,

Chris

CAPT Chris van Westendorp, NOAA

Commanding Officer, NOAA Ship *Thomas Jefferson* (S-222)

co.thomas.jefferson@noaa.gov

Ship Cell1: (757)647-0187 Cell2: (757)418-0629

VoIP: (541)867-8927/8928 Iridium: (808)434-2706

In-Port Norfolk: (757)441-6322/6323

[Quoted text hidden]

Christina Belton - NOAA Federal <christina.belton@noaa.gov>

Fri, Oct 26, 2018 at 11:33 AM

To: _OMAO MOA CO Thomas Jefferson <co.thomas.jefferson@noaa.gov>

Cc: "XO.Thomas Jefferson - NOAA Service Account" <xo.thomas.jefferson@noaa.gov>, Corey Allen - NOAA Federal <corey.allen@noaa.gov>, Kyle Ward - NOAA Federal <kyle.ward@noaa.gov>, Charles Wisotzkey - NOAA Federal <charles.j.wisotzkey@noaa.gov>, Anthony Klemm - NOAA Federal <anthony.r.klemm@noaa.gov>, James Miller - NOAA Federal <james.j.miller@noaa.gov>

Ok, sounds good. James is setting up the call.

[Quoted text hidden]

Charles Wisotzkey - NOAA Federal <charles.j.wisotzkey@noaa.gov>

Fri, Oct 26, 2018 at 11:35 AM

To: _OMAO MOA CO Thomas Jefferson <co.thomas.jefferson@noaa.gov>

Cc: Christina Belton - NOAA Federal <christina.belton@noaa.gov>, "XO.Thomas.Jefferson" <xo.thomas.jefferson@noaa.gov>, Corey Allen - NOAA Federal <corey.allen@noaa.gov>, Kyle Ward - NOAA Federal <kyle.ward@noaa.gov>, Anthony Klemm <anthony.r.klemm@noaa.gov>

Christina,

I doubt we will make that call.

From an ops perspective, it makes most sense for us to try these surveys on Tuesday 30 OCT. We can leave as scheduled on Monday and be back on project south of Ponce on Wednesday morning. Waiting until later in the leg will mean an extra night off project. We have personnel transfers in Ponce on 05 NOV before departing Puerto Rico, so we can't do it then. Please factor this in for planning and EC purposes.

- Charles

On Fri, Oct 26, 2018 at 11:31 AM CO Thomas Jefferson <co.thomas.jefferson@noaa.gov> wrote:

[Quoted text hidden]

--

LT Charles J. Wisotzkey, NOAA

[Quoted text hidden]

Christina Belton - NOAA Federal <christina.belton@noaa.gov>

Fri, Oct 26, 2018 at 11:54 AM

To: Charles Wisotzkey - NOAA Federal <charles.j.wisotzkey@noaa.gov>

Cc: _OMAO MOA CO Thomas Jefferson <co.thomas.jefferson@noaa.gov>, "XO.Thomas Jefferson - NOAA Service Account" <xo.thomas.jefferson@noaa.gov>, Corey Allen - NOAA Federal <corey.allen@noaa.gov>, Kyle Ward - NOAA Federal <kyle.ward@noaa.gov>, Anthony Klemm - NOAA Federal <anthony.r.klemm@noaa.gov>, James Miller - NOAA Federal <james.j.miller@noaa.gov>

Received.

Given that FEMA is requesting, we'll assume EC concurrence by Monday. We've reached out to all concerned.

Christina Belton
Physical Scientist
Operations Branch
Hydrographic Surveys Division
Office of Coast Survey, NOAA
240-533-0057
christina.belton@noaa.gov

[Quoted text hidden]

Christina Belton - NOAA Federal <christina.belton@noaa.gov> Mon, Oct 29, 2018 at 11:12 AM
To: Charles Wisotzkey - NOAA Federal <charles.j.wisotzkey@noaa.gov>
Cc: _OMAO MOA CO Thomas Jefferson <co.thomas.jefferson@noaa.gov>, "XO.Thomas Jefferson - NOAA Service Account" <xo.thomas.jefferson@noaa.gov>, Corey Allen - NOAA Federal <corey.allen@noaa.gov>, Kyle Ward - NOAA Federal <kyle.ward@noaa.gov>, Anthony Klemm - NOAA Federal <anthony.r.klemm@noaa.gov>

All,
Here is our finalized NEPA compliance for the new areas east of the main island Puerto Rico.
Thank you for addressing this short-order work.
Let us know we can help.
Christina

Christina Belton
Physical Scientist
Operations Branch
Hydrographic Surveys Division
Office of Coast Survey, NOAA
240-533-0057
christina.belton@noaa.gov

On Fri, Oct 26, 2018 at 11:35 AM Charles Wisotzkey - NOAA Federal <charles.j.wisotzkey@noaa.gov> wrote:
[Quoted text hidden]

 **Env Review - Fuel Delivery PR-USVI Maria response.Signed.pdf**
2049K

Charles Wisotzkey - NOAA Federal <charles.j.wisotzkey@noaa.gov> Mon, Oct 29, 2018 at 11:45 AM
To: Christina Belton - NOAA Federal <christina.belton@noaa.gov>
Cc: _OMAO MOA CO Thomas Jefferson <co.thomas.jefferson@noaa.gov>, "XO.Thomas.Jefferson" <xo.thomas.jefferson@noaa.gov>, Corey Allen - NOAA Federal <corey.allen@noaa.gov>, Kyle Ward - NOAA Federal <kyle.ward@noaa.gov>, Anthony Klemm <anthony.r.klemm@noaa.gov>

Got it. Thanks Christina. - Charles
[Quoted text hidden]



Charles Wisotzkey - NOAA Federal <charles.j.wisotzkey@noaa.gov>

OPR-I369-TJ_18 Puerto Rico CHANGE 1_Project Instructions

1 message

Christina Belton - NOAA Federal <christina.belton@noaa.gov> Tue, Nov 6, 2018 at 3:13 PM

To: ChiefOps MOA - NOAA Service Account <chiefops.moa@noaa.gov>, DeputyOps MOA - NOAA Service Account <DeputyOps.MOA@noaa.gov>

Cc: OMAO MOA CO Thomas Jefferson <co.thomas.jefferson@noaa.gov>, "XO.Thomas Jefferson - NOAA Service Account" <xo.thomas.jefferson@noaa.gov>, "OPS.Thomas Jefferson - NOAA Service Account" <ops.thomas.jefferson@noaa.gov>, "ChiefST.Thomas Jefferson - NOAA Service Account" <chiefst.thomas.jefferson@noaa.gov>, Kyle Ward - NOAA Federal <kyle.ward@noaa.gov>, Jay Nunenkamp - NOAA Federal <jay.nunenkamp@noaa.gov>, James Crocker - NOAA Federal <james.m.crocker@noaa.gov>, Rachel Medley - NOAA Federal <rachel.medley@noaa.gov>, Richard Brennan <richard.t.brennan@noaa.gov>, Lorraine Robidoux - NOAA Federal <lorraine.robidoux@noaa.gov>, Corey Allen - NOAA Federal <corey.allen@noaa.gov>, Castle Parker - NOAA Federal <castle.e.parker@noaa.gov>, Briana Welton <Briana.Hillstrom@noaa.gov>, John Nyberg - NOAA Federal <john.nyberg@noaa.gov>, Tara Wallace - NOAA Federal <tara.wallace@noaa.gov>, David Lane - NOAA Federal <david.lane@noaa.gov>, Jerry Hovis <gerald.hovis@noaa.gov>, "_NOS.CO-OPS.HPT" <NOS.COOPS.HPT@noaa.gov>, Christopher Hare - NOAA Federal <Christopher.Hare@noaa.gov>, Kristen Crossett - NOAA Federal <kristen.crossett@noaa.gov>, Douglas Wood - NOAA Affiliate <douglas.wood@noaa.gov>

Good Afternoon Chief Ops MOA, Deputy Ops MOA,

I am following up with some recently changed project instructions. Please find attached the Change 1 Project Instructions for OPR-I369-TJ_18 Puerto Rico.

The change is that we added two last minute urgent surveys for FEMA/MAERSK: F00758 and F00759. *Thomas Jefferson* conducted these surveys last week.

Otherwise there are only a couple of minor edits in the document title and PS Support.

Please be in touch with any questions.

Best Regards,
Christina Belton

Christina Belton
Physical Scientist
Operations Branch
Hydrographic Surveys Division
Office of Coast Survey, NOAA
240-533-0057
christina.belton@noaa.gov

 **OPR-I369-TJ-18_PuertoRico_ProjectInstructions_Change1_signed.pdf**
2054K



Charles Wisotzkey - NOAA Federal <charles.j.wisotzkey@noaa.gov>

OPR-I369-TJ_18 Puerto Rico Follow up Points to TJ from OCS conference call with Maersk Group

3 messages

Christina Belton - NOAA Federal <christina.belton@noaa.gov> Fri, Oct 26, 2018 at 5:43 PM
To: _OMAO MOA CO Thomas Jefferson <co.thomas.jefferson@noaa.gov>, "XO.Thomas Jefferson - NOAA Service Account" <xo.thomas.jefferson@noaa.gov>, Charles Wisotzkey - NOAA Federal <charles.j.wisotzkey@noaa.gov>, Anthony Klemm - NOAA Federal <anthony.r.klemm@noaa.gov>
Cc: Kyle Ward - NOAA Federal <kyle.ward@noaa.gov>, Briana Welton <Briana.Hillstrom@noaa.gov>, James Miller - NOAA Federal <james.j.miller@noaa.gov>, Corey Allen - NOAA Federal <corey.allen@noaa.gov>

Good Evening *TJ*,
These are the points of discussion from our call today with Rob Townley from Maersk.

Conference Call Attendees:

Rob Townley, Maersk Group
Kyle Ward, Southeast Navigation Manager, Customer Affairs Branch
James Miller, HSD AHB
Christina Belton, PM, HSD OPS

Follow up Points from Maersk con call:

1) Bahia de Sardinias polygon, Culebra Survey F00758

- i. There is a revised polygon extending approximately 45 meters to the northwest in Bahia de Sardinias capturing deeper channel portions. Please cover this area. Revised polygon is attached to this email with the suffix R1.
- ii. The most important area to survey is the pier face in the area 2017 TJ MBES did not reach, to the extent TJ launch can safely survey.
- iii. In all other areas within polygon, it is acceptable to only fill in 2017 gaps in the MBES coverage.
- iv. Please see the three accompanying graphics of Sardinias, generated by James. MBES coverage is visible but all soundings shown are from the 2018 USACE LiDAR data. The LiDAR data is served publicly on Digital Coast <https://coast.noaa.gov/digitalcoast/>.

2) Enighed Pond, USVI, Survey F00759

- i. As in Sardinias, the pier faces within the polygon are the most important areas to cover to the extent that TJ launch can safely survey.
- ii. In all other areas within polygon, it is acceptable to only fill in 2017 gaps in the MBES coverage

3) Ensenada Honda – South Coast Pilot Request Survey F00758

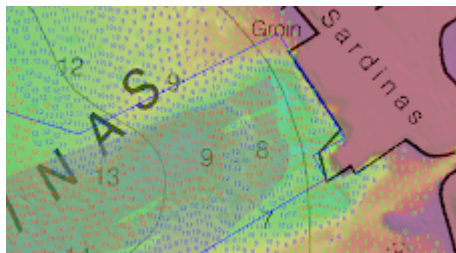
- i. The LiDAR coverage for this area is good and the 2018 LiDAR depths match well to chart.
- ii. The priority area is the deeper channel portion within the polygon, outside of the blue tint seen on 1:6,500 RNC 25654 Ensenada Honda.
- iii. Within the blue tint area, please only survey as much as extra time allows and to the extent that is safe to survey.

Please be in touch with any questions.

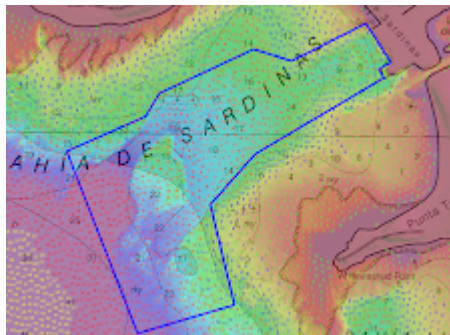
Have a nice weekend,
Christina

Christina Belton
Physical Scientist
Operations Branch
Hydrographic Surveys Division
Office of Coast Survey, NOAA
240-533-0057
christina.belton@noaa.gov

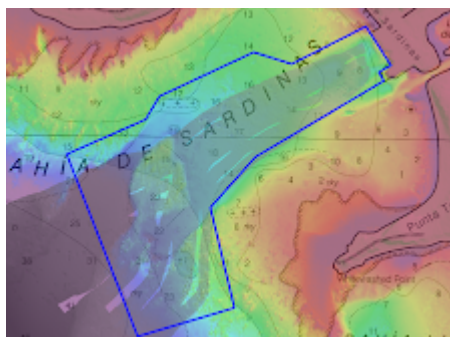
6 attachments



F00758 - Bahia de Sardinias - lidar soundings along pier.png
1242K



F00758 - Bahia de Sardinias - lidar soundings overview.png
1699K



F00758 - Bahia de Sardinias - multibeam and lidar coverage.png
1404K

 **SardiniasHonda_R1.zip**
4K

 **OPR-I369-TJ-18_SardiniasHonda_R1.pdf**
353K

 **Follow Up Points from Maersk con call.pdf**
287K

Charles Wisotzkey - NOAA Federal <charles.j.wisotzkey@noaa.gov> Mon, Oct 29, 2018 at 9:19 AM
To: _OMAO MOA OPS Thomas Jefferson <ops.thomas.jefferson@noaa.gov>, Anthony Klemm
<anthony.r.klemm@noaa.gov>

Anthony,

Can you try to download this? I can't get the new shape file to download to my computer.

[Quoted text hidden]

--

LT Charles J. Wisotzkey, NOAA
NOAA Ship Thomas Jefferson (S-222)

Anthony Klemm - NOAA Federal <anthony.r.klemm@noaa.gov> Mon, Oct 29, 2018 at 10:07 AM
To: Charles Wisotzkey <charles.j.wisotzkey@noaa.gov>
Cc: _OMAO MOA OPS Thomas Jefferson <ops.thomas.jefferson@noaa.gov>

4/12/2019

National Oceanic and Atmospheric Administration Mail - OPR-I369-TJ_18 Puerto Rico Follow up Points to TJ from OCS conference call ...

Done. K:\Project_Instructions\2018\OPR-I369-TJ-18_PuertoRico\GIS Files\Culebra updated polygons

LT Anthony Klemm, NOAA

Field Operations Officer

NOAA Ship *Thomas Jefferson*

439 W York Street

Norfolk, VA 23510

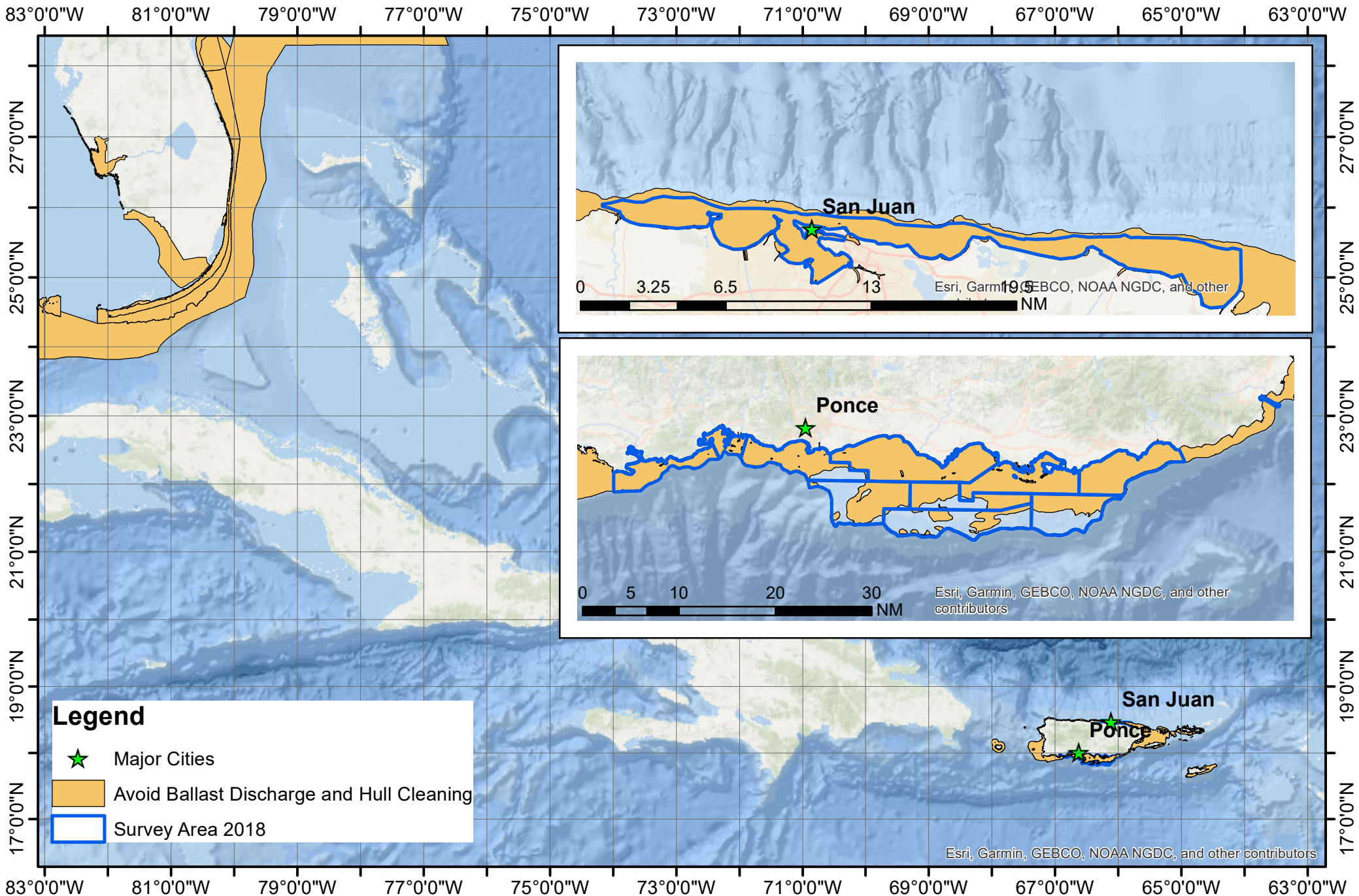
757-647-0187

Learn about NOAA nautical charts - www.nauticalcharts.noaa.gov

[Quoted text hidden]

OPR-I369-TJ_18
Puerto Rico Hydrographic Survey
Total SNM 309
August 13 - November 5, 2018

Endangered Species Act (ESA) and
Marine Mammal Protection Act (MMPA)
Compliance for
National Marine Fisheries Service Species (NMFS).





Charles Wisotzkey - NOAA Federal <charles.j.wisotzkey@noaa.gov>

OPR-I369-TJ-18 NCEI Data

2 messages

Calandria DeCastro <calandria.m.decastro@noaa.gov>

Thu, Mar 21, 2019 at 1:43 PM

To: _NODC Submissions <nodc.submissions@noaa.gov>

Cc: ops.thomas.jefferson@noaa.gov, Christina Belton - NOAA Federal <christina.belton@noaa.gov>


Good afternoon,

Attached is the NCEI Sound Speed Data for Project OPR-I369-TJ-18.

V/r,

--

LT Calandria DeCastro, NOAA
OPS in Training, NOAA Ship *Thomas Jefferson*
Ship Land Line: 757-441-6322
Ship Cell: 757-647-0187
Ship Iridium: 808-434-2706

 **OPR-I369_TJ-18_20190321.zip**
1582K

Charles Wisotzkey - NOAA Federal <charles.j.wisotzkey@noaa.gov>


Fri, Apr 5, 2019 at 10:58 AM

To: _OMAO MOA ChiefST Thomas Jefferson <chiefst.thomas.jefferson@noaa.gov>

[Quoted text hidden]

--

LT Charles J. Wisotzkey, NOAA
NOAA Ship Thomas Jefferson (S-222)

 **OPR-I369_TJ-18_20190321.zip**
1582K



UNITED STATES DEPARTMENT OF COMMERCE
National Oceanic and Atmospheric Administration
Office of Marine and Aviation Operations
NOAA Ship *Thomas Jefferson* (S222)
439 West York St, Norfolk, VA 23510

August 7, 2018

MEMORANDUM FOR: Christina Belton
Project Manager, OPR-I369-TJ-18
Hydrographic Surveys Division Operations Branch

FROM: Commander Chris van Westendorp, NOAA
Commanding Officer, NOAA Ship *Thomas Jefferson*

SUBJECT: Waiver request to modify OPR-I369-TJ-18 sheet extents

Thomas Jefferson requests a waiver of Project Instructions OPR-I369-TJ-18 based on available lidar.

Justification

In consultation with the Chief of AHB and with assistance from AHB's PS James Miller in planning for OPR-I369-TJ-18 (Puerto Rico), we discovered high quality topobathy lidar datasets (1m DEMs) from the USACE CZMIL system, flown in 2016. Combined with the RSD lidar datasets also available on NOAA's Digital Coast data repository, we created a 5m lidar DEM in common areas with our assigned project. We assess that existing lidar coverage satisfies Coast Survey's requirements in non-object detection areas of OPR-I369-TJ-18 due to observed high quality of existing and relatively recently acquired datasets available, especially in 200m set line spacing requirement areas (outlined green in Figure 1).

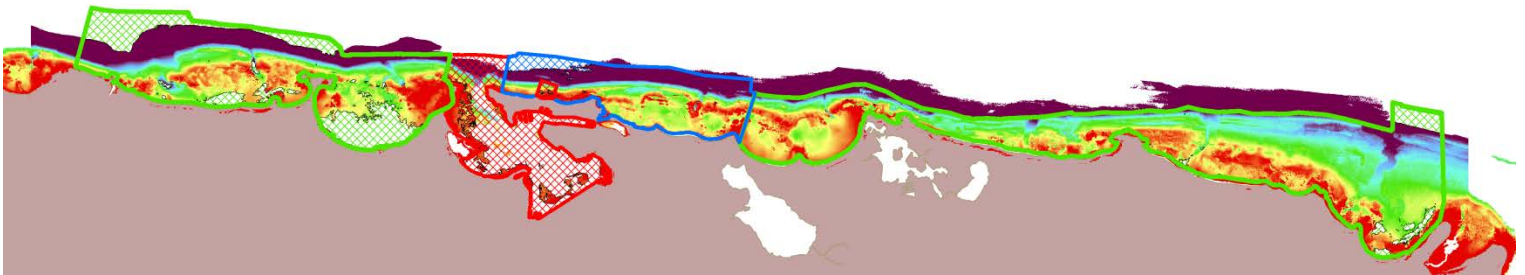


Figure 1: Extents of USACE and RSD lidar coverage overlapping H13041

We intend/propose to clip the assigned sheets with set line spacing and complete coverage requirements to existing lidar coverage extents that have been preliminarily reviewed (ESDRed) by PS James Miller and deemed suitable for charting. For sheets with object detection requirements, the lidar will be used for reconnaissance and to outline the 3.5m NALL. In the areas clipped to lidar coverage, we will identify assigned features to investigate where safe and practicable to do so, more fully developing significant features and providing proper hydrographic feature attribution.



We also intend to collect adequate overlap in junction areas, and identify lidar data areas for small reference surfaces and further empirical accuracy evaluation.

Similarly, one southern assigned complete coverage sheet significantly overlaps with the eastern edge of recently acquired EM710 MBES from a *Nancy Foster* mapping project (NCCOS, preliminary products shared by Tim Battista). We intend to junction with the NF survey data and clip our sheet extent accordingly (Figure 2):

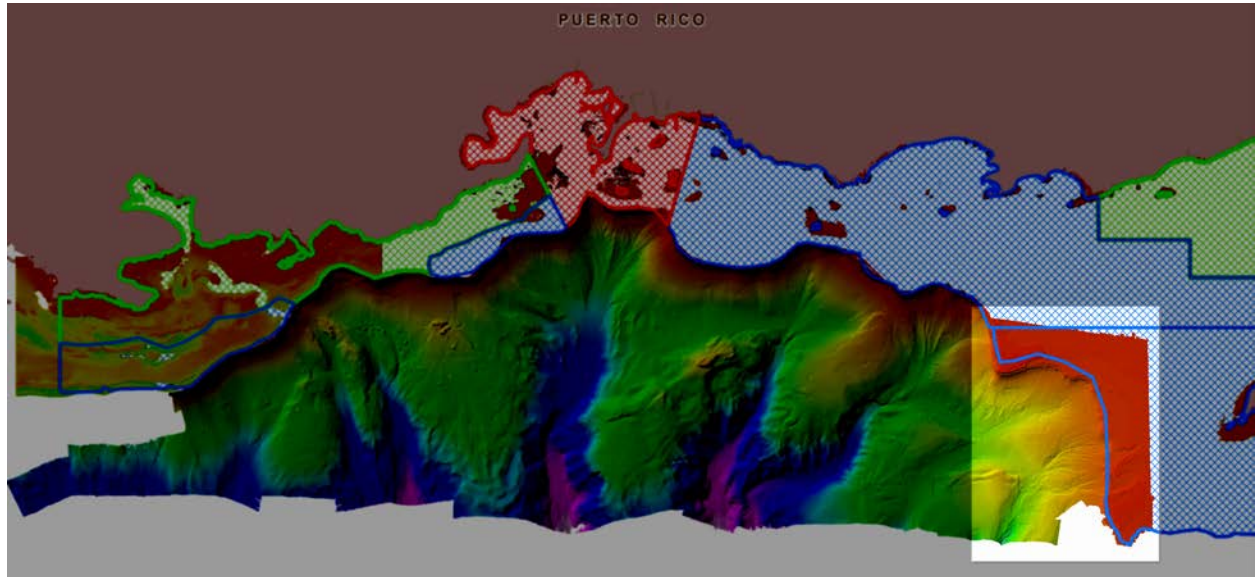


Figure 2: *Nancy Foster* survey extents overlapping H13144

These actions will reduce the assigned project area from 308 SNM to ~250 SNM. The Chief of AHB and I agree that using this existing high quality data increases operational safety, efficiency, and overall productivity.

Decision

Waiver is:

Granted

Denied

cc: Chief, HSD OPS
Chief, AHB
OPS, *Thomas Jefferson*
HCST, *Thomas Jefferson*



Charles Wisotzkey - NOAA Federal <charles.j.wisotzkey@noaa.gov>

Coast Pilot Review Report for OPR-I369-TJ-18 Puerto Rico Ports

1 message

Charles Wisotzkey - NOAA Federal <charles.j.wisotzkey@noaa.gov> Fri, Apr 12, 2019 at 10:54 AM
To: OCS NDB - NOAA Service Account <ocs.ndb@noaa.gov>, _NOS OCS NSD Coast Pilot <coast.pilot@noaa.gov>
Cc: Christina Belton - NOAA Federal <christina.belton@noaa.gov>, _OMAO MOA OPS Thomas Jefferson <ops.thomas.jefferson@noaa.gov>, _OMAO MOA ChiefST Thomas Jefferson <chiefst.thomas.jefferson@noaa.gov>

All,

Please see attached Coast Pilot Review Notes (OPR-I369-TJ-18_Coast Pilot Review Report.pdf).

The only suggested edits concern the entry for the port of Las Mareas and are in Paragraph 508.

Entries referencing depths should be updated in accordance with submitted bathy grids.

--

LT Charles J. Wisotzkey, NOAA
NOAA Ship Thomas Jefferson (S-222)

2 attachments



OPR-I369-TJ-18CoastPilotReport_original.pdf
2311K



OPR-I369-TJ-18_Coast Pilot Review Report.pdf
2264K



UNITED STATES DEPARTMENT OF COMMERCE
National Oceanic and Atmospheric Administration
Office of Marine and Aviation Operations,
Marine Operation Center-Atlantic, NOAA Ship *Thomas Jefferson*
Norfolk, Virginia 23510

April 16, 2018

MEMORANDUM FOR: Jay Nunenkamp
Environmental Compliance Coordinator, NOAA Office of Coast
Survey

FROM: ENS Jacquelyn Putnam, NOAA
Junior Officer, NOAA Ship *Thomas Jefferson*

SUBJECT: Recipients of Marine Species Awareness Training

The following personnel of NOAA Ship *Thomas Jefferson* completed the required Marine Species Awareness Training (MSAT) on April 4, 2018:

- LCDR Meghan McGovern
- LT Anthony Klemm
- LT Charles Wisotzkey
- ENS Dale Gump
- ENS Sydney Catoire
- ENS Garrison Grant
- ENS Jacquelyn Putnam
- ENS Taylor Krabiell
- JUE Sharon Gilliam
- EU Andy Medina
- WP Michael Wilson
- ET Thomas Loftin
- ET Richard Conway
- CHST Allison Stone
- HST Kim Glomb
- HST Joshua Hiteshew
- HST Tracey McMillan
- HAST Kevin Brown
- CB Bernard Pouser
- BGL Robert Bayliss
- SS Francine Grains
- SS James Brzostek



- AB Patrick Osborn
- AB Tom Bascom
- AB Stephen Lovett
- GVA Joshua Thompson
- CC Ace Burke
- 2C Patrick Fennel
- 2C Nester Poblete



Charles Wisotzkey - NOAA Federal <charles.j.wisotzkey@noaa.gov>

TJ-18-03: San Juan, Ponce and Vicinities, Puerto Rico Final Signed Instructions

2 messages

ChiefOps MOA - NOAA Service Account <chiefops.moa@noaa.gov> Wed, Jun 27, 2018 at 3:55 PM

To: _OMAO MOA CO Thomas Jefferson <co.thomas.jefferson@noaa.gov>
Cc: _OMAO MOA OPS Thomas Jefferson <ops.thomas.jefferson@noaa.gov>, "CO.MOC Atlantic" <co.moc.atlantic@noaa.gov>, Corey Allen - NOAA Federal <corey.allen@noaa.gov>, DeputyOps MOA - NOAA Service Account <deputyops.moa@noaa.gov>, Richard Brennan <richard.t.brennan@noaa.gov>, Christina Belton - NOAA Federal <christina.belton@noaa.gov>

CDR,

Attached are your signed and final project instructions for Puerto Rico.

Respectfully,
Joe

Joseph K. Carrier III, LCDR/NOAA
Chief of Operations
Marine Operations Center - Atlantic
439 West York Street
Norfolk, VA 23510
Office: (757) 441-6842
Alt Email: joseph.carrier@noaa.gov
<http://www.moc.noaa.gov/MOC-A/index.html>

 **TJ-18-03 v3.1 Final project instruction, OPR-I369-TJ-18 (Puerto Rico) sk.pdf**
7417K

CO Thomas Jefferson <co.thomas.jefferson@noaa.gov> Wed, Jun 27, 2018 at 10:41 PM

To: DeputyOps MOA - NOAA Service Account <deputyops.moa@noaa.gov>
Cc: "OPS.Thomas Jefferson - NOAA Service Account" <ops.thomas.jefferson@noaa.gov>

MOC-A,

PIs received and acknowledged.

R/

CO TJ

CDR Chris van Westendorp, NOAA
Commanding Officer, NOAA Ship Thomas Jefferson (S-222)
co.thomas.jefferson@noaa.gov
Ship Cell1: (757)647-0187 Cell2: (757)418-0629
VoIP: (541)867-8927/8928 Iridium: (808)434-2706
In-Port Norfolk: (757)441-6322/6323

[Quoted text hidden]



UNITED STATES DEPARTMENT OF COMMERCE
National Oceanic and Atmospheric Administration
Office of Marine and Aviation Operations
NOAA Ship *Thomas Jefferson* (S222)
439 West York St, Norfolk, VA 23510

3/29/2018

MEMORANDUM FOR: Corey Allen
Acting Chief, Operations Branch
Hydrographic Surveys Division

FROM: Commander Christiaan van Westendorp, NOAA
Commanding Officer, NOAA Ship *Thomas Jefferson*

SUBJECT: Waiver request – WGS84 Datum, CY2018 Projects

Thomas Jefferson requests a waiver of the HSSD 2017 and HSSD 2018 Section 2.2 Horizontal Datum requirement to acquire and submit survey data in WGS84 rather than NAD83 for all projects in calendar year 2018.

Justification

Retaining the current procedure and configurations will reduce the possibility of errors.

Decision

Waiver is: Granted Denied

cc: OPS, *Thomas Jefferson*
HCST, *Thomas Jefferson*





Charles Wisotzkey - NOAA Federal <charles.j.wisotzkey@noaa.gov>

OPR-I369-TJ-PuertoRico_FinalProject Instructions

1 message

Christina Belton - NOAA Federal <christina.belton@noaa.gov> Tue, Jun 19, 2018 at 6:03 PM

To: ChiefOps MOA - NOAA Service Account <chiefops.moa@noaa.gov>, DeputyOps MOA - NOAA Service Account <DeputyOps.MOA@noaa.gov>

Cc: _OMAO MOA CO Thomas Jefferson <co.thomas.jefferson@noaa.gov>, "XO.Thomas Jefferson - NOAA Service Account" <xo.thomas.jefferson@noaa.gov>, "OPS.Thomas Jefferson - NOAA Service Account" <ops.thomas.jefferson@noaa.gov>, "ChiefST.Thomas Jefferson - NOAA Service Account" <chiefst.thomas.jefferson@noaa.gov>, Kyle Ward - NOAA Federal <kyle.ward@noaa.gov>, Jay Nunenkamp - NOAA Federal <jay.nunenkamp@noaa.gov>, James Crocker - NOAA Federal <james.m.crocker@noaa.gov>, Rachel Medley - NOAA Federal <rachel.medley@noaa.gov>, Richard Brennan <richard.t.brennan@noaa.gov>, Lorraine Robidoux - NOAA Federal <lorraine.robidoux@noaa.gov>, Corey Allen - NOAA Federal <corey.allen@noaa.gov>, Kathryn Pridgen - NOAA Federal <kathryn.pridgen@noaa.gov>, Briana Welton <Briana.Hillstrom@noaa.gov>, John Nyberg - NOAA Federal <john.nyberg@noaa.gov>, Tara Wallace - NOAA Federal <tara.wallace@noaa.gov>, David Lane - NOAA Federal <david.lane@noaa.gov>, Jerry Hovis <gerald.hovis@noaa.gov>, "_NOS.CO-OPS.HPT" <NOS.COOPS.HPT@noaa.gov>, Christopher Hare - NOAA Federal <Christopher.Hare@noaa.gov>, Kristen Crossett - NOAA Federal <kristen.crossett@noaa.gov>

Good Evening Chief Ops MOA, Deputy Ops MOA,

I attached the Final Project Instructions for the project OPR-I369-TJ-18_Puerto Rico to this email.

Please let us know if you have any questions.

Best Regards,
Christina

Christina Belton
Physical Scientist
Operations Branch
Hydrographic Surveys Division
Office of Coast Survey, NOAA

240-533-0057

christina.belton@noaa.gov

2 attachments



OPR-I369-TJ-18_PuertoRico_ProjectInstructions_Final_signed.pdf
3413K



TJ-18-03_OMAO_ProjectInstruction_Final.docx
129K



Charles Wisotzkey - NOAA Federal <charles.j.wisotzkey@noaa.gov>

PR Priorities

1 message

Corey Allen - NOAA Federal <corey.allen@noaa.gov>

Mon, Aug 13, 2018 at 5:42 PM

To: "CO.Thomas Jefferson - NOAA Service Account" <co.thomas.jefferson@noaa.gov>

Cc: Christina Belton - NOAA Federal <christina.belton@noaa.gov>, "OPS.Thomas Jefferson - NOAA Service Account" <ops.thomas.jefferson@noaa.gov>

CO,

Thank you for your call today. In summary, we discussed the 1. shift in order of planned survey completion and 2. likelihood for planned operations in Sheet 1 to occur with ship pier-side.

1. CO acknowledged sheet 1 as highest priority for project, requested ability to begin operations in sheet 2 and save sheet 1 in the event staffing, weather or mechanical results in the ship alongside in San Juan harbor. Ops agrees as long as ship commits to completing Sheet 1 prior to departing at end of season.

2. No concerns.

Regards, Corey

--

J. Corey Allen

Chief (acting), Operations Branch

Office of Coast Survey, NOAA

Corey.Allen@noaa.gov

240.533.0037 (Office)

301.717.7271 (Cell)

[Click here for information on our planned survey activities](#)

Find us on [Facebook](#), [Twitter](#) and the [NOAA Coast Survey](#) blog



Charles Wisotzkey - NOAA Federal <charles.j.wisotzkey@noaa.gov>

Puerto Rico

12 messages

Joshua Witmer - NOAA Federal <joshua.d.witmer@noaa.gov> Sat, Jul 28, 2018 at 1:56 PM
To: Anthony Klemm <anthony.r.klemm@noaa.gov>, Charles Wisotzkey <charles.j.wisotzkey@noaa.gov>, _OMAO MOA XO Thomas Jefferson <xo.thomas.jefferson@noaa.gov>
Cc: Max Andersen - NOAA Federal <max.andersen@noaa.gov>, Gretchen Imahori <gretchen.imahori@noaa.gov>, "Stephen A. White" <Stephen.A.White@noaa.gov>

Hello all,

Max and I got the go ahead to both join the TJ during your 04-14Sep cruise. This is with the understanding that RSD will pay for my travel and OMAO/TJ will pay for Max's travel as an augmenter.

I know we initially talked about joining you in August, so does this plan still interest you if we join in September instead?

Regards,
Josh

--

Joshua D. Witmer
Remote Sensing Specialist
NOAA Affiliate - Data Solutions & Technology
National Geodetic Survey
717-799-4673

Anthony Klemm - NOAA Federal <anthony.r.klemm@noaa.gov> Mon, Jul 30, 2018 at 3:55 PM
To: Joshua Witmer - NOAA Federal <joshua.d.witmer@noaa.gov>
Cc: Charles Wisotzkey <charles.j.wisotzkey@noaa.gov>, _OMAO MOA XO Thomas Jefferson <xo.thomas.jefferson@noaa.gov>, Max Andersen - NOAA Federal <max.andersen@noaa.gov>, Gretchen Imahori <gretchen.imahori@noaa.gov>, "Stephen A. White" <Stephen.A.White@noaa.gov>

Hi Josh,

This is great news. We are definitely still interested in having you on board in September. I'm not sure how the travel \$\$\$ works. XO would know best, and if we have bunk spaces available for both of you. Charles mentioned you may be able to send us some preliminary coverage products of some of your more recent flights. That'd be helpful for sure.

Best,
Anthony

LT Anthony Klemm, NOAA
Field Operations Officer
NOAA Ship *Thomas Jefferson*
439 W York Street
Norfolk, VA 23510
757-647-0187

Learn about NOAA nautical charts - www.nauticalcharts.noaa.gov

[Quoted text hidden]

XO.Thomas Jefferson - NOAA Service Account <xo.thomas.jefferson@noaa.gov> Thu, Aug 2, 2018 at 8:35 PM
To: Anthony Klemm - NOAA Federal <anthony.r.klemm@noaa.gov>
Cc: Joshua Witmer - NOAA Federal <joshua.d.witmer@noaa.gov>, Charles Wisotzkey <charles.j.wisotzkey@noaa.gov>, Max Andersen - NOAA Federal <max.andersen@noaa.gov>, Gretchen Imahori <gretchen.imahori@noaa.gov>, "Stephen A.

White" <Stephen.A.White@noaa.gov>

That sounds great. The September 4-14 can fit both, and we should be able to fund Max through the Augmenter pool - barring sticky problems EOFY.

R
XO

LCDR Meghan McGovern, NOAA
Executive Officer, NOAA Ship Thomas Jefferson
Ship Land Line: 757-441-6322
Ship Cell: 757-647-0187
Ship Iridium: 808-434-2706
Ship VOIP: 541-867-8927

Follow NOAA Ship Thomas Jefferson on Facebook
<https://www.facebook.com/NOAAShipThomasJefferson>

[Quoted text hidden]

Joshua Witmer - NOAA Federal <joshua.d.witmer@noaa.gov> Fri, Aug 3, 2018 at 4:26 PM
To: "XO.Thomas Jefferson - NOAA Service Account" <xo.thomas.jefferson@noaa.gov>
Cc: Anthony Klemm - NOAA Federal <anthony.r.klemm@noaa.gov>, Charles Wisotzkey <charles.j.wisotzkey@noaa.gov>, Max Andersen - NOAA Federal <max.andersen@noaa.gov>, Gretchen Imahori <gretchen.imahori@noaa.gov>, "Stephen A. White" <Stephen.A.White@noaa.gov>

Excellent. We will start preparing our travel requests and work at getting them pushed through.

Anthony,
Do you mind sending your P.R. survey blocks extents? Shapefile or whatever format you have is fine. Just want to make sure we have the latest planned survey areas.

We are inquiring about some shoreline imagery recently collected in P.R. and trying to see if we can get it to you in time. Would this be worth it to you, or is the other imagery you have sufficient enough for you?

Also, once we have your survey sheet areas, we will work at getting you some lidar GeoTiffs that you can hopefully use in Hypack to help navigate the launches in the shallow water areas.

Of course, please let me know of anything else you think of that we can provide to you and let's stay in touch. Looking forward to the trip.

Regards,

Joshua D. Witmer
Remote Sensing Specialist
NOAA Affiliate - Data Solutions & Technology
National Geodetic Survey
717-799-4673

[Quoted text hidden]

Anthony Klemm - NOAA Federal <anthony.r.klemm@noaa.gov> Sat, Aug 4, 2018 at 12:32 PM
To: Joshua Witmer - NOAA Federal <joshua.d.witmer@noaa.gov>, Max Andersen - NOAA Federal <max.andersen@noaa.gov>, Gretchen Imahori - NOAA Federal <gretchen.imahori@noaa.gov>, "Stephen A. White" <stephen.a.white@noaa.gov>
Cc: _OMAO MOA OPS Thomas Jefferson <ops.thomas.jefferson@noaa.gov>

Hi Josh,

See attached for the sheet boundaries. Just to let you know, we did some more data discovery on DigitalCoast and found some beautiful USACE lidar datasets from 2014 and 2016 (CZMIL) that work very well with the datasets you sent us

earlier. All combined, it may turn out that we won't have to do much work on the north side, except for inside San Juan Harbor. On the first sheet on the north, there are some areas that don't require object detection. They are requiring only 200m set line spacing in some areas, and complete coverage in others. We intend to see how willing HSD Ops is to allow the existing lidar coverage to be good enough in those non-object detection required areas. I believe that this may be the strongest use case for lidar compared to traditional launch survey.

I think any extra high res shoreline imagery would be helpful, especially in resolving some of the dangerous-to-get-to features assigned to us by Ops.

I'll keep you all in touch once we hear back.

Best,
Anthony

LT Anthony Klemm, NOAA
Field Operations Officer
NOAA Ship *Thomas Jefferson*
439 W York Street
Norfolk, VA 23510
757-647-0187


Learn about NOAA nautical charts - www.nauticalcharts.noaa.gov

[Quoted text hidden]

3 attachments

 **OPR-I369-TJ-18_PuertoRico_ProjectInstructions_Final_signed.pdf**
952K

 **CSF_PRF_PR.zip**
2136K

 **TJ_Puerto_Rico_Sheets_2018.zip**
586K

Joshua Witmer - NOAA Federal <joshua.d.witmer@noaa.gov>

Fri, Aug 10, 2018 at 11:34 AM

To: Anthony Klemm - NOAA Federal <anthony.r.klemm@noaa.gov>

Cc: _OMAO MOA OPS Thomas Jefferson <ops.thomas.jefferson@noaa.gov>, Gretchen Imahori - NOAA Federal <gretchen.imahori@noaa.gov>, Max Andersen - NOAA Federal <max.andersen@noaa.gov>

Anthony,

I am glad that you found the USACE lidar datasets on DigitalCoast. I wanted to bring that to your attention, hoping that it could be useful for you.

Are you planning to use the datasets as a background in Hypack to aid in navigating the survey launches in the shallow water areas? If so, do you have the proper files you need to do so? Or, should we try to generate something for you?

From what I understand, the lidar DEMs that we sent you are gridded to 5m, shoal biased, and referenced to vertical = MLLW, horizontal = NAD83.

When downloading the USACE DEMs from DigitalCoast, I don't believe you have the option to select grid size or shoal biased. However, I don't see that being an issue to help navigate in Hypack. Perhaps something to consider if doing more in depth comparisons with multibeam that you collect.

Regarding imagery; in the event that processing takes longer than anticipated on our end and it takes until the end of September to complete, is that still of significant value to you? Or, not really so much at that point?

Regards,
Josh

Joshua D. Witmer
Remote Sensing Specialist
NOAA Affiliate - Data Solutions & Technology
National Geodetic Survey
717-799-4673

On Wed, Aug 8, 2018 at 3:09 PM, Anthony Klemm - NOAA Federal <anthony.r.klemm@noaa.gov> wrote:
Hi Gretchen,

We've been able to download some WV2/3 data, and also have access to the post Maria imagery you guys posted for the immediate response. Between the two of them, we should be OK, but it wouldn't be as good as what you guys have. I understand if it'll be too heavy of a lift to provide that to us right now. You guys have done so much for us already.

Best,
Anthony

On Aug 8, 2018, at 11:53, Gretchen Imahori - NOAA Federal <gretchen.imahori@noaa.gov> wrote:

Hi Anthony,

When do you need the new PR imagery? Mike is pushing back (I think because folks were burned out from Hx response) but Sellars may go rogue for you ;)

g

[Quoted text hidden]

--

Gretchen Imahori
Remote Sensing Division
National Geodetic Survey
(o): 240-533-9586
(tw): 240-515-6263

<http://www.ngs.noaa.gov/>

XO.Thomas Jefferson - NOAA Service Account <xo.thomas.jefferson@noaa.gov>

Mon, Aug 27, 2018 at 8:16 AM

To: Joshua Witmer - NOAA Federal <joshua.d.witmer@noaa.gov>

Cc: Anthony Klemm - NOAA Federal <anthony.r.klemm@noaa.gov>, Charles Wisotzkey <charles.j.wisotzkey@noaa.gov>, Max Andersen - NOAA Federal <max.andersen@noaa.gov>, Gretchen Imahori <gretchen.imahori@noaa.gov>, "Stephen A. White" <Stephen.A.White@noaa.gov>

All,

Unfortunately OMAO cannot fund travel for LTJG Andersen. We've tried various hoops and pots of money but the end of the fiscal year has everybody operating on emergency/no-sail requirements only.

I actually have not been able to get a solid 'no' from shoreside, but given our timeline I'm 99% sure we can't make it happen. I'm really sorry; we were pressing on, thinking we might be able to make it work. No joy.

R
XO

LCDR Meghan McGovern, NOAA
Executive Officer, NOAA Ship Thomas Jefferson
Ship Land Line: 757-441-6322

Ship Cell: 757-647-0187
Ship Iridium: 808-434-2706
Ship VOIP: 541-867-8927

Follow NOAA Ship Thomas Jefferson on Facebook
<https://www.facebook.com/NOAAShipThomasJefferson>

[Quoted text hidden]

Joshua Witmer - NOAA Federal <joshua.d.witmer@noaa.gov> Tue, Aug 28, 2018 at 5:10 PM
To: Anthony Klemm <anthony.r.klemm@noaa.gov>
Cc: Charles Wisotzkey <charles.j.wisotzkey@noaa.gov>, Gretchen Imahori <gretchen.imahori@noaa.gov>

Anthony,

How is the survey progress going during this first leg? Do you anticipate spending all of the next leg working on the Northern sheet near San Juan?

I'm just trying to get an idea of which areas we may be working during the next Cruise.

Thank you,
Josh

[Quoted text hidden]

[Quoted text hidden]

Anthony Klemm - NOAA Federal <anthony.r.klemm@noaa.gov> Tue, Aug 28, 2018 at 5:12 PM
To: Joshua Witmer - NOAA Federal <joshua.d.witmer@noaa.gov>
Cc: Charles Wisotzkey <charles.j.wisotzkey@noaa.gov>, Gretchen Imahori - NOAA Federal <gretchen.imahori@noaa.gov>

Hi Josh,

Things are going well. We are working in the south right now, and will work in the south all next leg. The areas we intend to survey next leg are Ponce, button up Guayanilla, and Bahia de Jobos.

Best,
Anthony

LT Anthony Klemm, NOAA
Field Operations Officer
NOAA Ship *Thomas Jefferson*
439 W York Street
Norfolk, VA 23510
757-647-0187

Learn about NOAA nautical charts - www.nauticalcharts.noaa.gov

[Quoted text hidden]

Gretchen Imahori - NOAA Federal <gretchen.imahori@noaa.gov> Thu, Sep 6, 2018 at 4:56 PM
To: "XO.Thomas Jefferson - NOAA Service Account" <xo.thomas.jefferson@noaa.gov>, Max Andersen - NOAA Federal <max.andersen@noaa.gov>
Cc: Joshua Witmer - NOAA Federal <joshua.d.witmer@noaa.gov>, Anthony Klemm - NOAA Federal <anthony.r.klemm@noaa.gov>, Charles Wisotzkey <charles.j.wisotzkey@noaa.gov>, "Stephen A. White" <Stephen.A.White@noaa.gov>

Hi All,

I just spoke to Mike A. about Max's travel (I was on leave so didn't know about Max). He said he would pay for it. So ...

Max - if you still want to go - you need to get your travel stuff in tomorrow. Mike said he would pay for it.

XO - if this doesn't work/its too late - please let us know.

Thanks,

g

[Quoted text hidden]

[Quoted text hidden]

XO.Thomas Jefferson - NOAA Service Account <xo.thomas.jefferson@noaa.gov> Thu, Sep 6, 2018 at 5:30 PM

To: Gretchen Imahori - NOAA Federal <gretchen.imahori@noaa.gov>

Cc: Max Andersen - NOAA Federal <max.andersen@noaa.gov>, Joshua Witmer - NOAA Federal <joshua.d.witmer@noaa.gov>, Anthony Klemm - NOAA Federal <anthony.r.klemm@noaa.gov>, Charles Wisotzkey <charles.j.wisotzkey@noaa.gov>, "Stephen A. White" <Stephen.A.White@noaa.gov>

Greetings Gretchen,

Regarding the current leg, it is probably too late as we are already operating on the south side of Puerto Rico and returning to port next Friday.

However - in discussing with CO, FOOs - if Mike A is still willing to pay for travel, we would absolutely get a huge benefit from having Max here next leg: 9/17-9/28 (San Juan to San Juan). FOO was telling me about the positive work Josh has been doing here already, and having that continue with Max next leg would be fantastic. In addition, we will be down one OOD (our Nav-O, which coincidentally used to be Max); it might be a good opportunity for Max to get in some of his required augmentation time while here, and do some mentoring with our new officers. I really do think it would be time & money well spent, and mutually beneficial.

If it sounds like it will work out on your end, best travel dates would probably be 9/16 arriving San Juan, departing 9/29 from San Juan. Let me know what you think!

R

Meghan

LCDR Meghan McGovern, NOAA
Executive Officer, NOAA Ship Thomas Jefferson
Ship Land Line: 757-441-6322
Ship Cell: 757-647-0187
Ship Iridium: 808-434-2706
Ship VOIP: 541-867-8927

Follow NOAA Ship Thomas Jefferson on Facebook
<https://www.facebook.com/NOAAShipThomasJefferson>

[Quoted text hidden]

XO.Thomas Jefferson - NOAA Service Account <xo.thomas.jefferson@noaa.gov> Fri, Sep 7, 2018 at 11:19 AM

To: "OPS.Thomas Jefferson - NOAA Service Account" <ops.thomas.jefferson@noaa.gov>, Anthony Klemm - NOAA Federal <anthony.r.klemm@noaa.gov>, Charles Wisotzkey - NOAA Federal <Charles.J.Wisotzkey@noaa.gov>

FYI 😊

LCDR Meghan McGovern, NOAA
Executive Officer, NOAA Ship Thomas Jefferson
Ship Land Line: 757-441-6322
Ship Cell: 757-647-0187
Ship Iridium: 808-434-2706
Ship VOIP: 541-867-8927

Follow NOAA Ship Thomas Jefferson on Facebook
<https://www.facebook.com/NOAAShipThomasJefferson>

----- Forwarded message -----

From: **Gretchen Imahori - NOAA Federal** <gretchen.imahori@noaa.gov>
Date: Fri, Sep 7, 2018 at 11:11 AM
Subject: Re: Puerto Rico
To: "XO.Thomas Jefferson - NOAA Service Account" <xo.thomas.jefferson@noaa.gov>

Hi Meghan,

Max doesn't think he can make those dates work. Sorry :(

Hope all goes well with the surveying,

g

[Quoted text hidden]



Charles Wisotzkey - NOAA Federal <charles.j.wisotzkey@noaa.gov>

Re: Future PR lidar

11 messages

Anthony Klemm - NOAA Federal <anthony.r.klemm@noaa.gov>

Tue, Jul 3, 2018 at 11:48 AM

To: Gretchen Imahori - NOAA Federal <gretchen.imahori@noaa.gov>, xo.thomas.jefferson@noaa.gov, OPS.Thomas.Jefferson@noaa.gov

Yes, please. This is great news.

On Jul 3, 2018, at 09:36, Gretchen Imahori - NOAA Federal <gretchen.imahori@noaa.gov> wrote:

Hi Anthony,

Just wanted to touch base with re. our discussion about support from RSD. Mike approved Josh coming to the TJ to help.

Should I touch base with your XO to see if we can make this work?

Thanks and happy 4th!

g

On Tue, May 29, 2018 at 8:05 PM, Anthony Klemm - NOAA Federal <anthony.r.klemm@noaa.gov> wrote:

Sorry.... yes, Thursday at 10:30. I routinely forget what day it is out here.... they all seem the same.

LT Anthony Klemm, NOAA
Field Operations Officer
NOAA Ship *Thomas Jefferson*
[439 W York Street](#)
[Norfolk, VA 23510](#)
[757-647-0187](tel:757-647-0187)

Learn about NOAA nautical charts - www.nauticalcharts.noaa.gov

On Tue, May 29, 2018 at 7:03 PM, Gretchen Imahori - NOAA Federal <gretchen.imahori@noaa.gov> wrote:

Hi Anthony,

Sorry for any confusion - I can't do Wed at 10:30am. Can you do Thursday or Friday (Thursday at 10:30am or on Friday at 11am or 2pm) to talk to me and Stephen?

Thanks,

g

On Tue, May 29, 2018 at 3:12 PM, Anthony Klemm - NOAA Federal <anthony.r.klemm@noaa.gov> wrote:

Hi Gretchen,

I'm available tomorrow at 10:30am (Eastern time, right?)

You can best reach me on the ship through our VOIP system:

541-867-8927

541-867-8928

Best,

Anthony

LT Anthony Klemm, NOAA
Field Operations Officer
NOAA Ship *Thomas Jefferson*

439 W York Street
Norfolk, VA 23510
757-647-0187

Learn about NOAA nautical charts - www.nauticalcharts.noaa.gov

On Tue, May 29, 2018 at 8:06 AM, Gretchen Imahori - NOAA Federal
<gretchen.imahori@noaa.gov> wrote:

Hi Anthony,

Do you have time Thursday at 10:30am or on Friday at 11am or 2pm to talk to me and Stephen?

Thanks,
g

On Wed, May 23, 2018 at 4:03 PM, Anthony Klemm - NOAA Federal
<anthony.r.klemm@noaa.gov> wrote:

Hi Gretchen,

I will be on the TJ for the Puerto Rico work this fall. It'd be great to hear updates about the work you're doing.

Best regards,
Anthony

LT Anthony Klemm, NOAA
Field Operations Officer
NOAA Ship *Thomas Jefferson*
[439 W York Street](http://www.noaa.gov)
[Norfolk, VA 23510](http://www.noaa.gov)
[757-647-0187](http://www.noaa.gov)

Learn about NOAA nautical charts - www.nauticalcharts.noaa.gov

On Mon, May 21, 2018 at 11:42 AM, Gretchen Imahori - NOAA Federal
<gretchen.imahori@noaa.gov> wrote:

Hi Anthony,

Are you going to be FOO during the PR surveys this year? Would like to keep you in the loop with our discussions with HSD on the survey project if you are able/interested. Please let me know.

thanks,
g

----- Forwarded message -----

From: **Martha Herzog - NOAA Federal** <martha.herzog@noaa.gov>

Date: Mon, May 21, 2018 at 12:14 PM

Subject: Re: Future PR lidar

To: Christina Belton - NOAA Federal <christina.belton@noaa.gov>

Cc: Stephen White - NOAA Federal <stephen.a.white@noaa.gov>, Gretchen Imahori - NOAA Federal <gretchen.imahori@noaa.gov>, Corey Allen <corey.allen@noaa.gov>

Thanks Christina. Didn't know (er, or maybe forgot) we had the file.

Stephen and Gretchen - we are planning on setting our inshore limit to 6m depth for hydro acquisition with the hopes the new data will be consistent up to that depth and we can easily junction with it. Please let me know if you think otherwise.

Thanks,
Martha

On Mon, May 21, 2018 at 11:48 AM, Christina Belton - NOAA Federal
<christina.belton@noaa.gov> wrote:

All,

In the polygon Stephan sent to us on May 15, the future LiDAR was for the entire island. I think there was a question of funding, but assuming that is all OK - the plan is for the pink Polygon?

<image.png>

Thank You!

Christina

Christina Belton
Physical Scientist
Operations Branch
Hydrographic Surveys Division
Office of Coast Survey, NOAA

240-533-0057

christina.belton@noaa.gov

On Mon, May 21, 2018 at 11:38 AM, Martha Herzog - NOAA Federal

<martha.herzog@noaa.gov> wrote:

Hey Stephen,

My memory is fuzzy of where RSD is planning topo-bathy lidar data collection later this year around Puerto Rico. For some reason, I thought it was all of the PR coastline, but checking the RSD plans, it looks like it is just for the area around Vieques. Is this correct?

Thanks,
Martha

<image.png>

--

Gretchen Imahori
Remote Sensing Division
National Geodetic Survey
(o): 240-533-9586
(tw): 240-515-6263

<http://www.ngs.noaa.gov/>

--

Gretchen Imahori
Remote Sensing Division
National Geodetic Survey
(o): 240-533-9586
(tw): 240-515-6263

<http://www.ngs.noaa.gov/>

--

Gretchen Imahori
Remote Sensing Division
National Geodetic Survey
(o): 240-533-9586
(tw): 240-515-6263

<http://www.ngs.noaa.gov/>

--

Gretchen Imahori
Remote Sensing Division
National Geodetic Survey
(o): 240-533-9586
(tw): 240-515-6263

<http://www.ngs.noaa.gov/>

XO.Thomas Jefferson - NOAA Service Account <xo.thomas.jefferson@noaa.gov> Tue, Jul 3, 2018 at 12:38 PM
To: Anthony Klemm - NOAA Federal <anthony.r.klemm@noaa.gov>
Cc: Gretchen Imahori - NOAA Federal <gretchen.imahori@noaa.gov>, "OPS.Thomas Jefferson - NOAA Service Account" <OPS.Thomas.Jefferson@noaa.gov>

Hi all,


Just let me know who/gender and when you would like to join and I'll see if we can accommodate berthing. We're happy to get all the help we can get and we usually have rooms available. Latest schedule attached. Thank you.

R
Meghan

LCDR Meghan McGovern, NOAA
Executive Officer, NOAA Ship Thomas Jefferson
Ship Land Line: 757-441-6322
Ship Cell: 757-647-0187
Ship Iridium: 808-434-2706
Ship VOIP: 541-867-8927

Follow NOAA Ship Thomas Jefferson on Facebook
<https://www.facebook.com/NOAAShipThomasJefferson>

[Quoted text hidden]

 **20180627 - TJ Schedule.pdf**
14K

Gretchen Imahori - NOAA Federal <gretchen.imahori@noaa.gov> Tue, Jul 3, 2018 at 12:50 PM
To: "XO.Thomas Jefferson - NOAA Service Account" <xo.thomas.jefferson@noaa.gov>

Cc: Anthony Klemm - NOAA Federal <anthony.r.klemm@noaa.gov>, "OPS.Thomas Jefferson - NOAA Service Account" <OPS.Thomas.Jefferson@noaa.gov>, Joshua Witmer - NOAA Federal <joshua.d.witmer@noaa.gov>, Max Andersen - NOAA Federal <max.andersen@noaa.gov>

Hi Meghan,

Thanks so much! The visitor will be male and we will work on dates and get those to you.

Happy 4th!

g

[Quoted text hidden]

Gretchen Imahori - NOAA Federal <gretchen.imahori@noaa.gov>

Tue, Jul 10, 2018 at 11:02 AM

To: Charles Wisotzkey - NOAA Federal <charles.j.wisotzkey@noaa.gov>

Cc: Joshua Witmer - NOAA Federal <joshua.d.witmer@noaa.gov>, Max Andersen - NOAA Federal <max.andersen@noaa.gov>, "Stephen A. White" <stephen.a.white@noaa.gov>

Hi Charles,

Will Anthony be back next week? Just saw his on leave message.

Thank you,

g

----- Forwarded message -----

From: **Gretchen Imahori - NOAA Federal** <gretchen.imahori@noaa.gov>

Date: Tue, Jul 10, 2018 at 10:59 AM

Subject: Re: Future PR lidar

To: Anthony Klemm - NOAA Federal <anthony.r.klemm@noaa.gov>

Cc: Joshua Witmer - NOAA Federal <joshua.d.witmer@noaa.gov>, "Stephen A. White" <stephen.a.white@noaa.gov>, Max Andersen - NOAA Federal <max.andersen@noaa.gov>

Hi Anthony,

Do you have time this week or next to talk about logistics?

Thanks,

g

[Quoted text hidden]

[Quoted text hidden]

Charles Wisotzkey - NOAA Federal <charles.j.wisotzkey@noaa.gov>

Tue, Jul 10, 2018 at 11:19 AM

To: Gretchen Imahori - NOAA Federal <gretchen.imahori@noaa.gov>

Cc: Joshua Witmer - NOAA Federal <joshua.d.witmer@noaa.gov>, Max Andersen - NOAA Federal <max.andersen@noaa.gov>, "Stephen A. White" <stephen.a.white@noaa.gov>

Gretchen,

No, Anthony will be out until 30 JUL. Is there anything I can help you out with?

- Charles

[Quoted text hidden]

--

LT Charles J. Wisotzkey, NOAA

NOAA Ship Thomas Jefferson (S-222)

Gretchen Imahori - NOAA Federal <gretchen.imahori@noaa.gov>

Fri, Jul 13, 2018 at 12:11 PM

To: Charles Wisotzkey - NOAA Federal <charles.j.wisotzkey@noaa.gov>

Cc: Joshua Witmer - NOAA Federal <joshua.d.witmer@noaa.gov>, Max Andersen - NOAA Federal <max.andersen@noaa.gov>, "Stephen A. White" <stephen.a.white@noaa.gov>, "XO.Thomas Jefferson - NOAA Service

Account" <xo.thomas.jefferson@noaa.gov>

Hi Charles,

Thanks for your offer of help. Could Josh, Stephen, Max and I have a quick call conference with you and the XO today or sometime next week?

Thanks,

g

[Quoted text hidden]

Charles Wisotzkey - NOAA Federal <charles.j.wisotzkey@noaa.gov>

Thu, Jul 19, 2018 at 5:04 PM

To: Gretchen Imahori - NOAA Federal <gretchen.imahori@noaa.gov>

Cc: Joshua Witmer - NOAA Federal <joshua.d.witmer@noaa.gov>, Max Andersen - NOAA Federal

<max.andersen@noaa.gov>, "Stephen A. White" <stephen.a.white@noaa.gov>, "XO.Thomas Jefferson - NOAA Service Account" <xo.thomas.jefferson@noaa.gov>

Gretchen,

Apologies for not getting back to you sooner. Can we try for something tomorrow morning?

- Charles

[Quoted text hidden]

Joshua Witmer - NOAA Federal <joshua.d.witmer@noaa.gov>

Fri, Jul 20, 2018 at 7:06 AM

To: Charles Wisotzkey - NOAA Federal <charles.j.wisotzkey@noaa.gov>

Cc: Gretchen Imahori - NOAA Federal <gretchen.imahori@noaa.gov>, Max Andersen - NOAA Federal

<max.andersen@noaa.gov>, "Stephen A. White" <stephen.a.white@noaa.gov>, "XO.Thomas Jefferson - NOAA Service Account" <xo.thomas.jefferson@noaa.gov>

Hi Charles,

Any chance you would have 15-30 minutes this morning at 1130 for a quick call? If not, let me know what time will work for you.

Thanks,

Josh

Joshua D. Witmer
Remote Sensing Specialist
NOAA Affiliate - Data Solutions & Technology
National Geodetic Survey
717-799-4673

[Quoted text hidden]

Charles Wisotzkey - NOAA Federal <charles.j.wisotzkey@noaa.gov>

Fri, Jul 20, 2018 at 7:23 AM

To: Joshua Witmer - NOAA Federal <joshua.d.witmer@noaa.gov>

Cc: Gretchen Imahori - NOAA Federal <gretchen.imahori@noaa.gov>, Max Andersen - NOAA Federal

<max.andersen@noaa.gov>, "Stephen A. White" <stephen.a.white@noaa.gov>, "XO.Thomas Jefferson - NOAA Service Account" <xo.thomas.jefferson@noaa.gov>

Josh,

Works for me.

XO, will 1030 ship time work for you?

- Charles

[Quoted text hidden]

XO.Thomas Jefferson - NOAA Service Account <xo.thomas.jefferson@noaa.gov>

Fri, Jul 20, 2018 at 8:40 AM

To: Charles Wisotzkey - NOAA Federal <charles.j.wisotzkey@noaa.gov>
Cc: Joshua Witmer - NOAA Federal <joshua.d.witmer@noaa.gov>, Gretchen Imahori - NOAA Federal <gretchen.imahori@noaa.gov>, Max Andersen - NOAA Federal <max.andersen@noaa.gov>, "Stephen A. White" <stephen.a.white@noaa.gov>

Yup

LCDR Meghan McGovern, NOAA
Executive Officer, NOAA Ship Thomas Jefferson
Ship Land Line: 757-441-6322
Ship Cell: 757-647-0187
Ship Irridium: 808-434-2706
Ship VOIP: 541-867-8927

Follow NOAA Ship Thomas Jefferson on Facebook
<https://www.facebook.com/NOAAShipThomasJefferson>

[Quoted text hidden]

Joshua Witmer - NOAA Federal <joshua.d.witmer@noaa.gov>
To: Charles Wisotzkey - NOAA Federal <charles.j.wisotzkey@noaa.gov>

Mon, Jul 23, 2018 at 7:27 PM

Charles,

I have a couple follow-up questions from our phone call last week.

Since you all will be a little short-handed during that first P.R. cruise in August, how much nearshore launch ops do you think you will actually end up doing? Are you going to be short on watchstanders and coxswains that maybe only send out one launch periodically?

Also, if you had to guess, how long do you think it will take to finish the north coast sheets before moving to the south coast sheets?

I am asking because trying to gauge what impact it may have if RSD is not able to send someone until the first September cruise, instead of the August cruise.

Thanks. Appreciate the help.
Josh

Joshua D. Witmer
Remote Sensing Specialist
NOAA Affiliate - Data Solutions & Technology
National Geodetic Survey
717-799-4673

[Quoted text hidden]



Charles Wisotzkey - NOAA Federal <charles.j.wisotzkey@noaa.gov>

TJ-18-03: San Juan, Ponce and Vicinities, Puerto Rico Final Signed Instructions

2 messages

ChiefOps MOA - NOAA Service Account <chiefops.moa@noaa.gov>

Wed, Jun 27, 2018 at 3:55 PM

To: _OMAO MOA CO Thomas Jefferson <co.thomas.jefferson@noaa.gov>

Cc: _OMAO MOA OPS Thomas Jefferson <ops.thomas.jefferson@noaa.gov>, "CO.MOC Atlantic"

<co.moc.atlantic@noaa.gov>, Corey Allen - NOAA Federal <corey.allen@noaa.gov>, DeputyOps MOA - NOAA Service Account <deputyops.moa@noaa.gov>, Richard Brennan <richard.t.brennan@noaa.gov>, Christina Belton - NOAA Federal <christina.belton@noaa.gov>

CDR,

Attached are your signed and final project instructions for Puerto Rico.

Respectfully,
Joe

Joseph K. Carrier III, LCDR/NOAA
Chief of Operations
Marine Operations Center - Atlantic
439 West York Street
Norfolk, VA 23510
Office: (757) 441-6842
Alt Email: joseph.carrier@noaa.gov
<http://www.moc.noaa.gov/MOC-A/index.html>

 **TJ-18-03 v3.1 Final project instruction, OPR-I369-TJ-18 (Puerto Rico) sk.pdf**
7417K

CO Thomas Jefferson <co.thomas.jefferson@noaa.gov>

Wed, Jun 27, 2018 at 10:41 PM

To: DeputyOps MOA - NOAA Service Account <deputyops.moa@noaa.gov>

Cc: "OPS.Thomas Jefferson - NOAA Service Account" <ops.thomas.jefferson@noaa.gov>

MOC-A,

Pls received and acknowledged.

R/

CO TJ

CDR Chris van Westendorp, NOAA

Commanding Officer, NOAA Ship *Thomas Jefferson* (S-222)

co.thomas.jefferson@noaa.gov

Ship Cell1: (757)647-0187 Cell2: (757)418-0629

VoIP: (541)867-8927/8928 Iridium: (808)434-2706

In-Port Norfolk: (757)441-6322/6323

[Quoted text hidden]



Charles Wisotzkey - NOAA Federal <charles.j.wisotzkey@noaa.gov>

Waiver request for OPR-I369-TJ-18 sheet limit modification

2 messages

Anthony Klemm - NOAA Federal <anthony.r.klemm@noaa.gov> Tue, Aug 7, 2018 at 7:25 PM
To: Christina Belton - NOAA Affiliate <christina.belton@noaa.gov>, Corey personal cell Allen <corey.allen@noaa.gov>
Cc: _OMAO MOA OPS Thomas Jefferson <ops.thomas.jefferson@noaa.gov>, Briana Welton - NOAA Federal <Briana.Hillstrom@noaa.gov>, James Miller <james.j.miller@noaa.gov>

Christina and Corey,

Attached is the waiver request we discussed earlier over the phone. Please let me know if you have any questions or would like more information.

Best regards,
Anthony

LT Anthony Klemm, NOAA
Field Operations Officer
NOAA Ship *Thomas Jefferson*
439 W York Street
Norfolk, VA 23510
757-647-0187

Learn about NOAA nautical charts - www.nauticalcharts.noaa.gov

 **OPR-I369-TJ-18 sheet limit waiver request.pdf**
282K

Christina Belton - NOAA Federal <christina.belton@noaa.gov> Mon, Aug 13, 2018 at 7:04 AM
To: Anthony Klemm - NOAA Federal <anthony.r.klemm@noaa.gov>
Cc: Corey personal cell Allen <corey.allen@noaa.gov>, _OMAO MOA OPS Thomas Jefferson <ops.thomas.jefferson@noaa.gov>, Briana Welton - NOAA Federal <Briana.Hillstrom@noaa.gov>, James Miller <james.j.miller@noaa.gov>

Hi Anthony,
Looks good. The signed waiver is attached.
Many Thanks,
Christina

Christina Belton
Physical Scientist
Operations Branch
Hydrographic Surveys Division
Office of Coast Survey, NOAA

240-533-0057
christina.belton@noaa.gov

[Quoted text hidden]


 **OPR-I369-TJ-18 sheet limit waiver request_signed.pdf**
298K



**UNITED STATES DEPARTMENT OF COMMERCE
National Oceanic and Atmospheric Administration**

Office of Marine and Aviation Operations
NOAA Ship *Thomas Jefferson* (S222)
439 West York St, Norfolk, VA 23510

3/29/2018

MEMORANDUM FOR: Corey Allen
Acting Chief, Operations Branch
Hydrographic Surveys Division 

FROM: Commander Christiaan van Westendorp, NOAA
Commanding Officer, NOAA Ship *Thomas Jefferson*

SUBJECT: Waiver request – WGS84 Datum, CY2018 Projects

VAN
WESTENDORP.CHRISTIAAN.HENRY.1012828175
c=US, ou=U.S. Government, ou=DoD, ou=PKI,
ou=NOAA, cn=VAN
WESTENDORP.CHRISTIAAN.HENRY.1012828175
2018.03.30 09:57:32 -0400

Thomas Jefferson requests a waiver of the HSSD 2017 and HSSD 2018 Section 2.2 Horizontal Datum requirement to acquire and submit survey data in WGS84 rather than NAD83 for all projects in calendar year 2018.

Justification

Retaining the current procedure and configurations will reduce the possibility of errors.

Decision



Waiver is: Granted

Denied

cc: OPS, *Thomas Jefferson*
HCST, *Thomas Jefferson*



APPROVAL PAGE

F00759

Data meet or exceed current specifications as certified by the OCS survey acceptance review process. Descriptive Report and survey data except where noted are adequate to supersede prior surveys and nautical charts in the common area.

The following products will be sent to NCEI for archive

- Descriptive Report
- Data Acquisition and Processing Report
- Collection of Bathymetric Attributed Grids (BAGs)
- Processed survey data and records
- Geospatial PDF of survey products
- Backscatter mosaic

The survey evaluation and verification has been conducted according to current OCS Specifications, and the survey has been approved for dissemination and usage of updating NOAA's suite of nautical charts.

Approved: _____

Commander Meghan McGovern, NOAA
Chief, Atlantic Hydrographic Branch