

119°42'W 119°41'30"W 119°41'W 119°40'30"W 119°40'W 119°39'30"W 119°39'W

34° 25' N
30° N
34° 25' N
34° 24' N
30° N
34° 24' N
30° N
34° 24' N
30° N

34° 25' N
30° N
34° 25' N
34° 24' N
30° N
34° 24' N
30° N

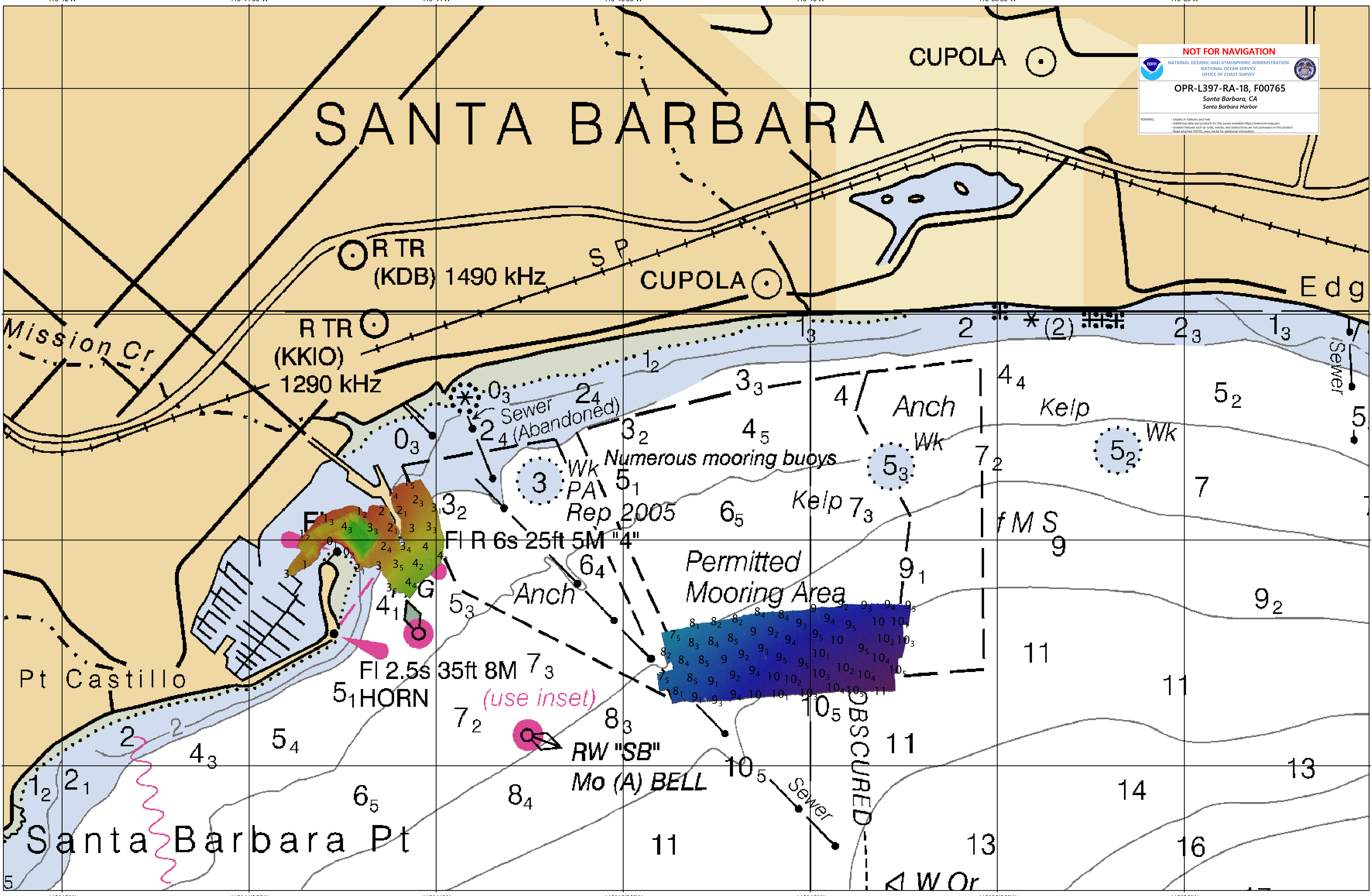
NOT FOR NAVIGATION

NATIONAL OCEANIC AND ATMOSPHERIC ADMINISTRATION
NATIONAL OCEAN SERVICE
OFFICE OF COAST SURVEY

OPR-L397-RA-18, F00765
Santa Barbara, CA
Santa Barbara Harbor

REMARKS:
- Depths in fathoms and feet
- Additional data and products for this survey available <http://www.ncei.noaa.gov>
- Isolated features such as rocks, wrecks, and obstructions are not portrayed on this product
- Read attached USCGC vessel report for additional information

SANTA BARBARA



119°42'W 119°41'30"W 119°41'W 119°40'30"W 119°40'W 119°39'30"W 119°39'W