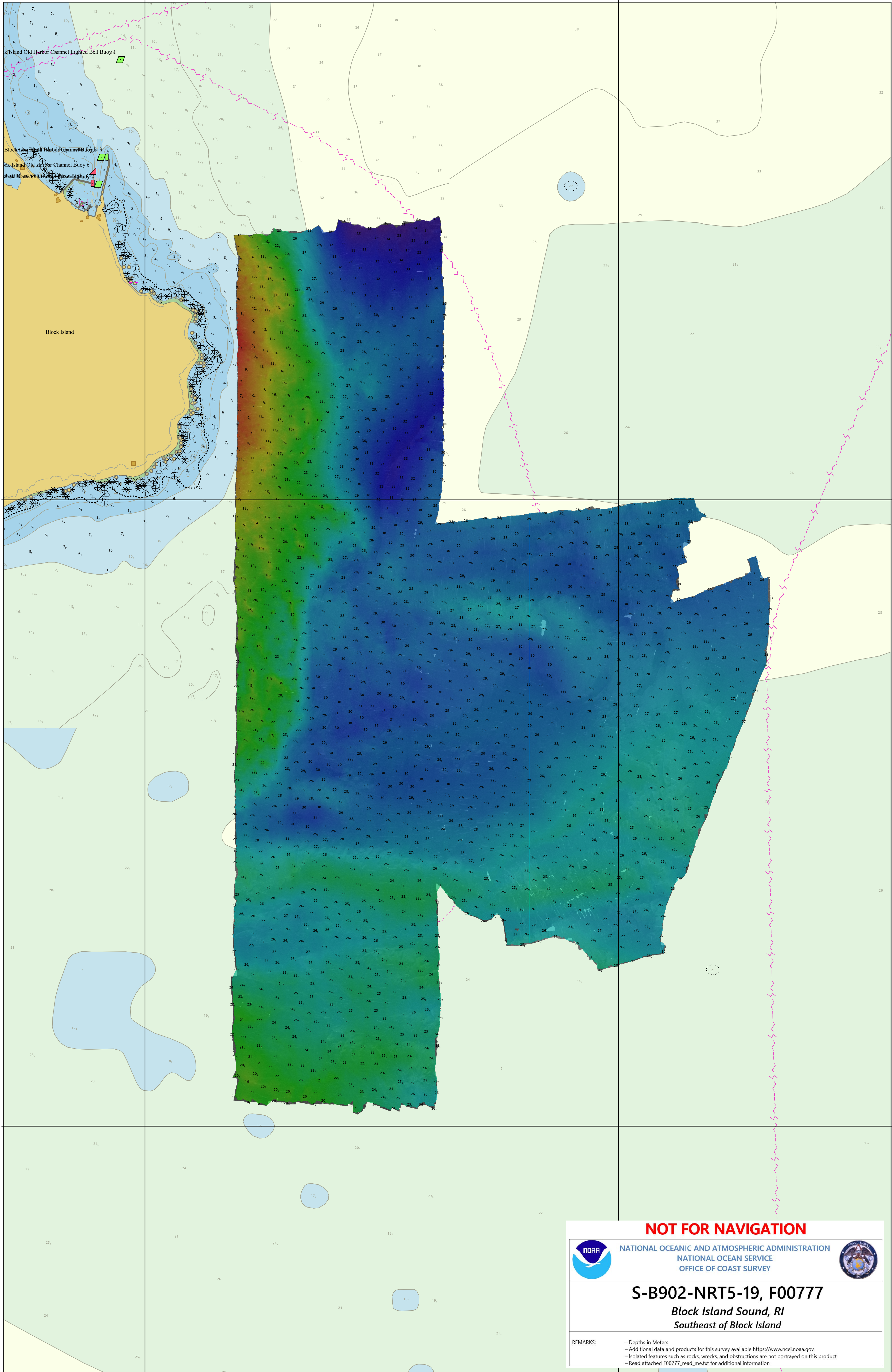


71°33'W

71°30'W



41° 09' N

41° 09' N

41° 06' N

41° 06' N

71°33'W

71°30'W

NOT FOR NAVIGATION



NATIONAL OCEANIC AND ATMOSPHERIC ADMINISTRATION
 NATIONAL OCEAN SERVICE
 OFFICE OF COAST SURVEY



S-B902-NRT5-19, F00777

*Block Island Sound, RI
 Southeast of Block Island*

REMARKS:

- Depths in Meters
- Additional data and products for this survey available <https://www.ncei.noaa.gov>
- Isolated features such as rocks, wrecks, and obstructions are not portrayed on this product
- Read attached F00777_read_me.txt for additional information