


74°00'30"W

74°W

73°59'30"W

40°  
34'  
30"  
N

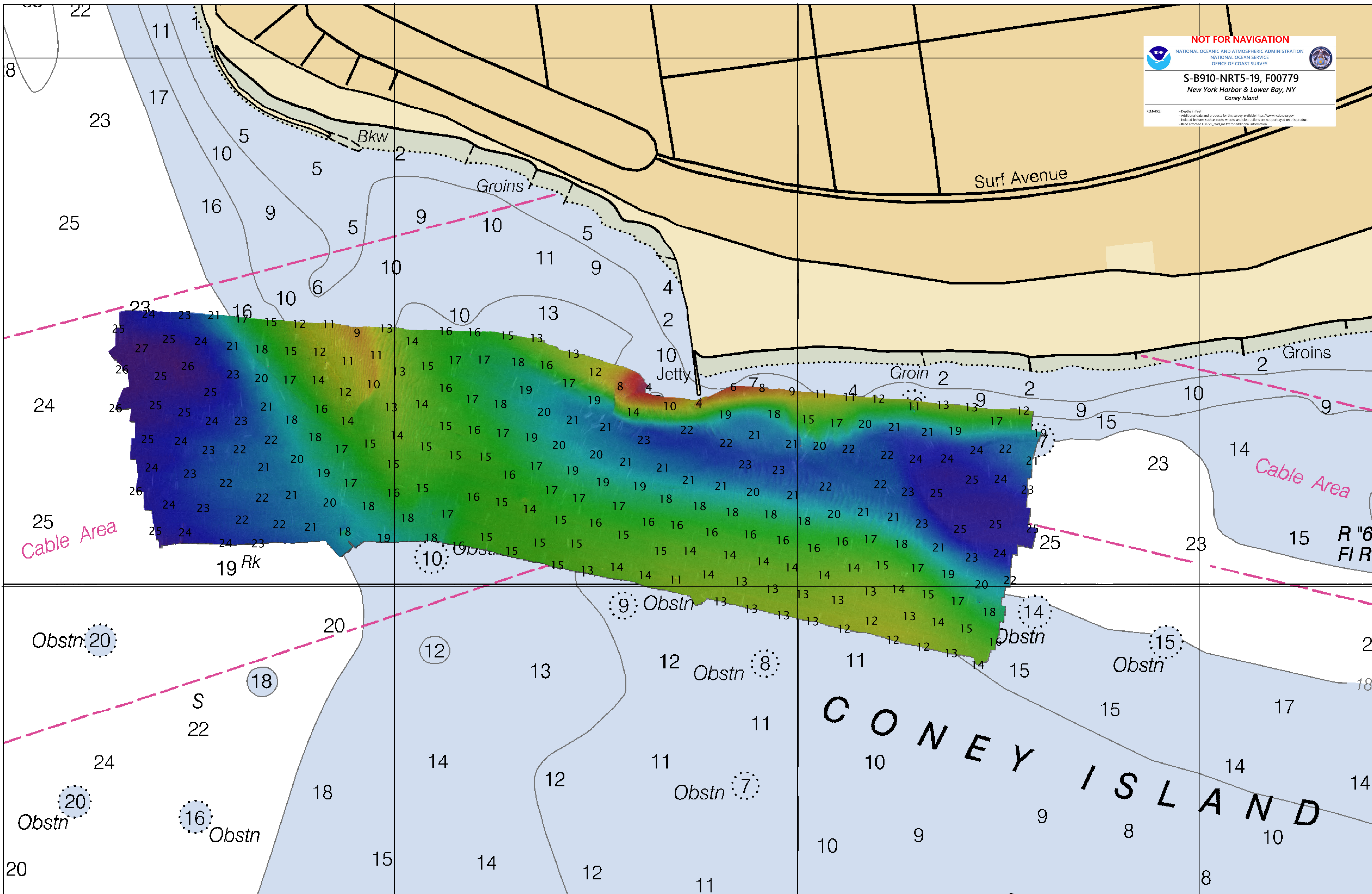
40°  
34'  
30"  
N



**NOT FOR NAVIGATION**  
NATIONAL OCEANIC AND ATMOSPHERIC ADMINISTRATION  
NATIONAL OCEAN SERVICE  
OFFICE OF COAST SURVEY

S-B910-NRT5-19, F00779  
New York Harbor & Lower Bay, NY  
Coney Island

REMARKS:  
- Depths in Feet  
- Additional data and products for this survey available <https://www.ncei.noaa.gov>  
- Isolated features such as rocks, wrecks, and obstructions are not portrayed on this product  
- Read attached F00779\_sed\_mn.txt for additional information



74°00'30"W

74°W

73°59'30"W

40°  
34'  
N

40°  
34'  
N