

122°23'W

122°22'W

122°21'W

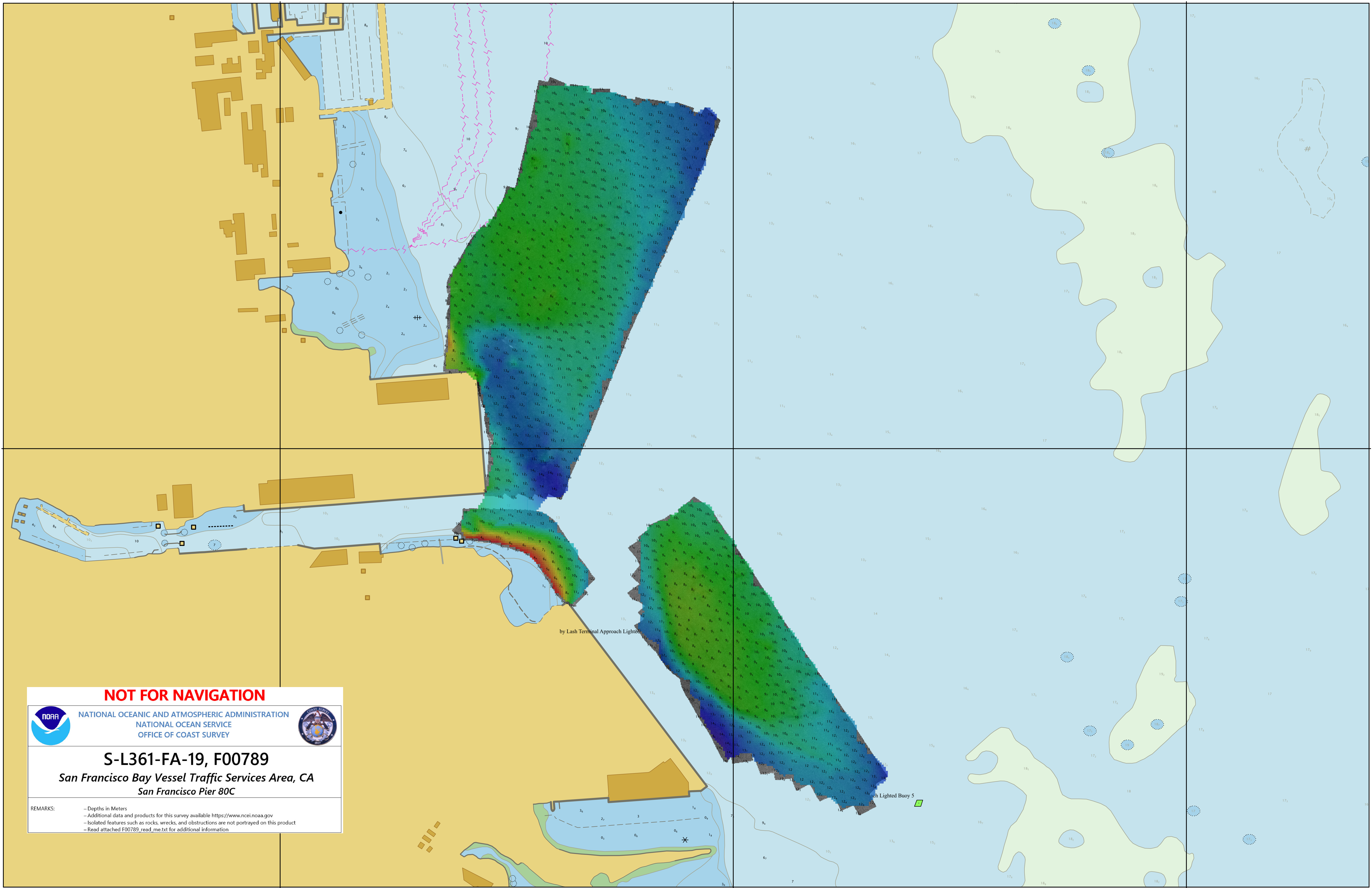
37° 45' N

37° 45' N

122°23'W

122°22'W

122°21'W



NOT FOR NAVIGATION



NATIONAL OCEANIC AND ATMOSPHERIC ADMINISTRATION
 NATIONAL OCEAN SERVICE
 OFFICE OF COAST SURVEY



S-L361-FA-19, F00789

San Francisco Bay Vessel Traffic Services Area, CA
San Francisco Pier 80C

REMARKS:
 - Depths in Meters
 - Additional data and products for this survey available <https://www.ncei.noaa.gov>
 - Isolated features such as rocks, wrecks, and obstructions are not portrayed on this product
 - Read attached F00789_read_me.txt for additional information