

87°20'0"W

87°18'0"W

87°16'0"W

87°14'0"W

87°12'0"W

NOT FOR NAVIGATION



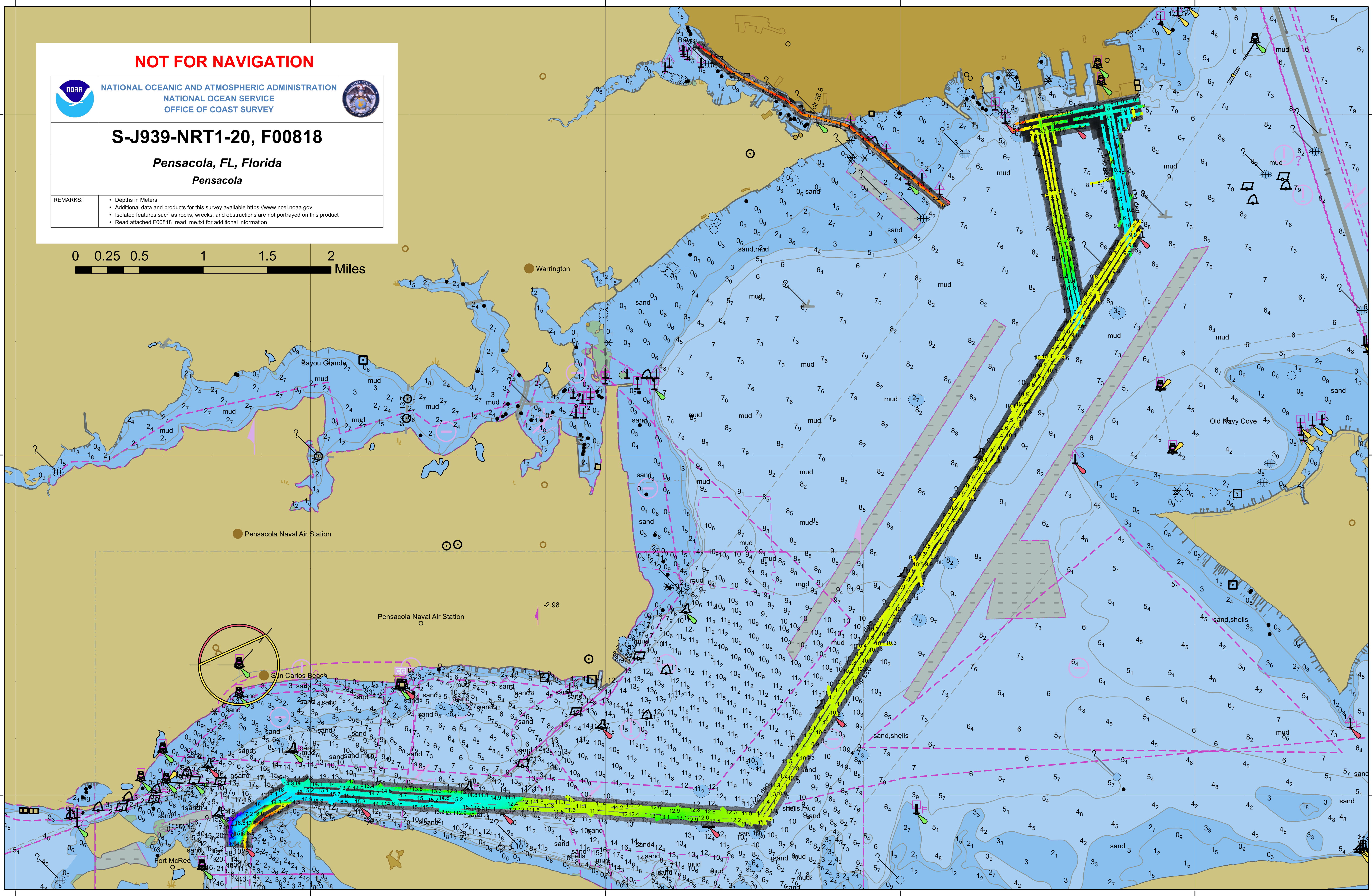
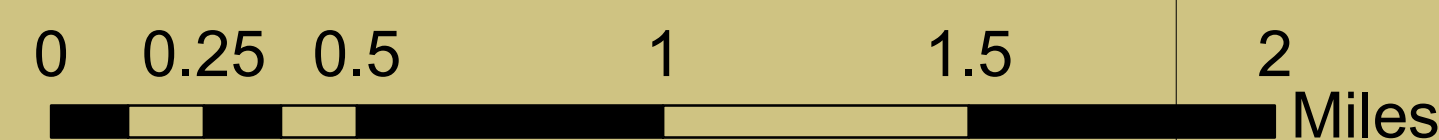
NATIONAL OCEANIC AND ATMOSPHERIC ADMINISTRATION
NATIONAL OCEAN SERVICE
OFFICE OF COAST SURVEY



S-J939-NRT1-20, F00818

Pensacola, FL, Florida
Pensacola

- REMARKS:
- Depths in Meters
 - Additional data and products for this survey available <https://www.ncei.noaa.gov>
 - Isolated features such as rocks, wrecks, and obstructions are not portrayed on this product
 - Read attached F00818_read_me.txt for additional information



87°20'0"W

87°18'0"W

87°16'0"W

87°14'0"W

87°12'0"W

30°24'0"N

30°24'0"N

30°22'0"N

30°22'0"N

30°20'0"N

30°20'0"N