

89°06'W

89°05'W

89°04'W

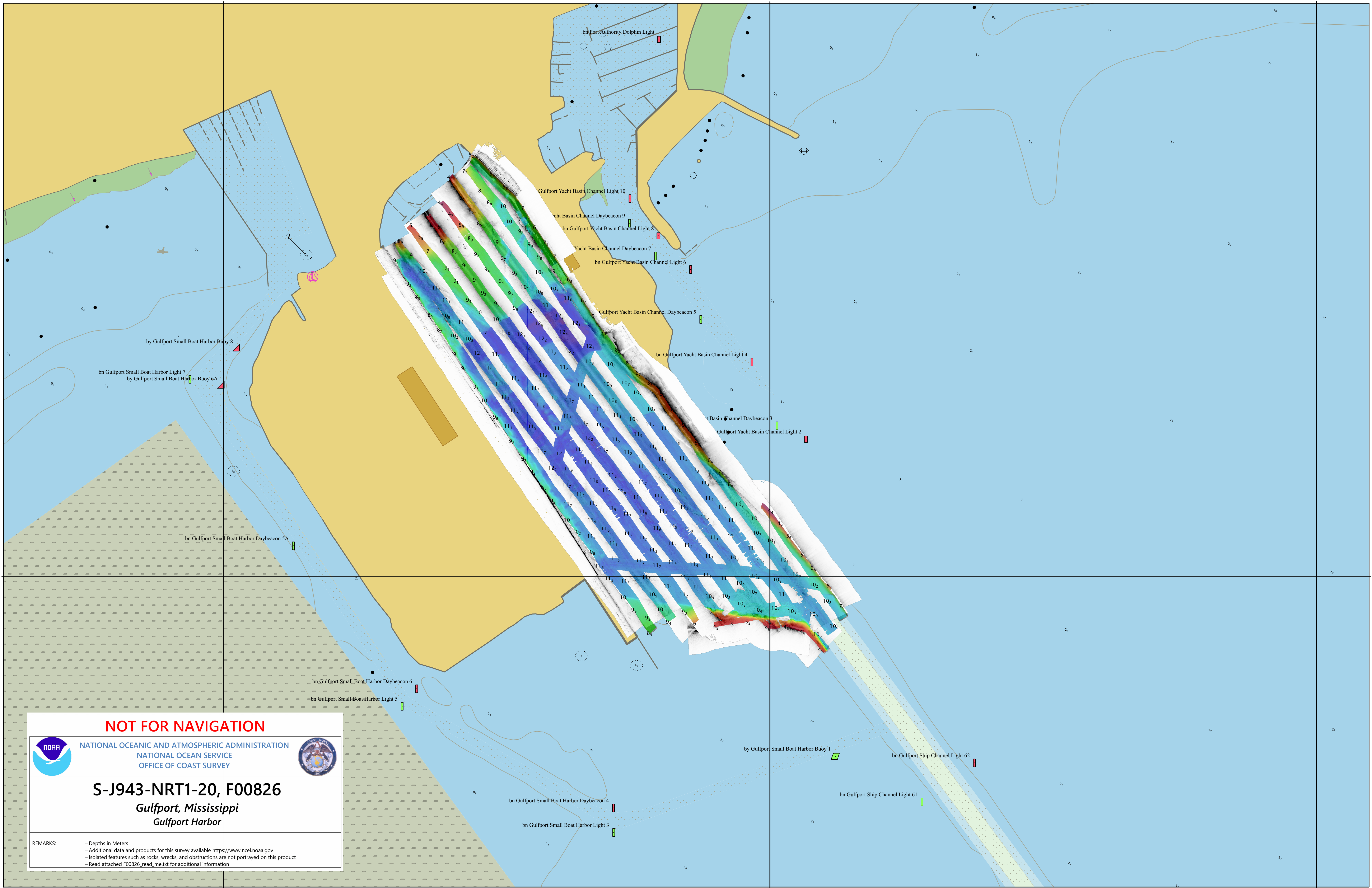
30° 21' N

30° 21' N

89°06'W

89°05'W

89°04'W



NOT FOR NAVIGATION



NATIONAL OCEANIC AND ATMOSPHERIC ADMINISTRATION
NATIONAL OCEAN SERVICE
OFFICE OF COAST SURVEY



S-J943-NRT1-20, F00826

*Gulfport, Mississippi
Gulfport Harbor*

REMARKS:
- Depths in Meters
- Additional data and products for this survey available <https://www.ncei.noaa.gov>
- Isolated features such as rocks, wrecks, and obstructions are not portrayed on this product
- Read attached F00826_read_me.txt for additional information