

71°24'0"W

NOT FOR NAVIGATION



NATIONAL OCEANIC AND ATMOSPHERIC ADMINISTRATION
NATIONAL OCEAN SERVICE
OFFICE OF COAST SURVEY



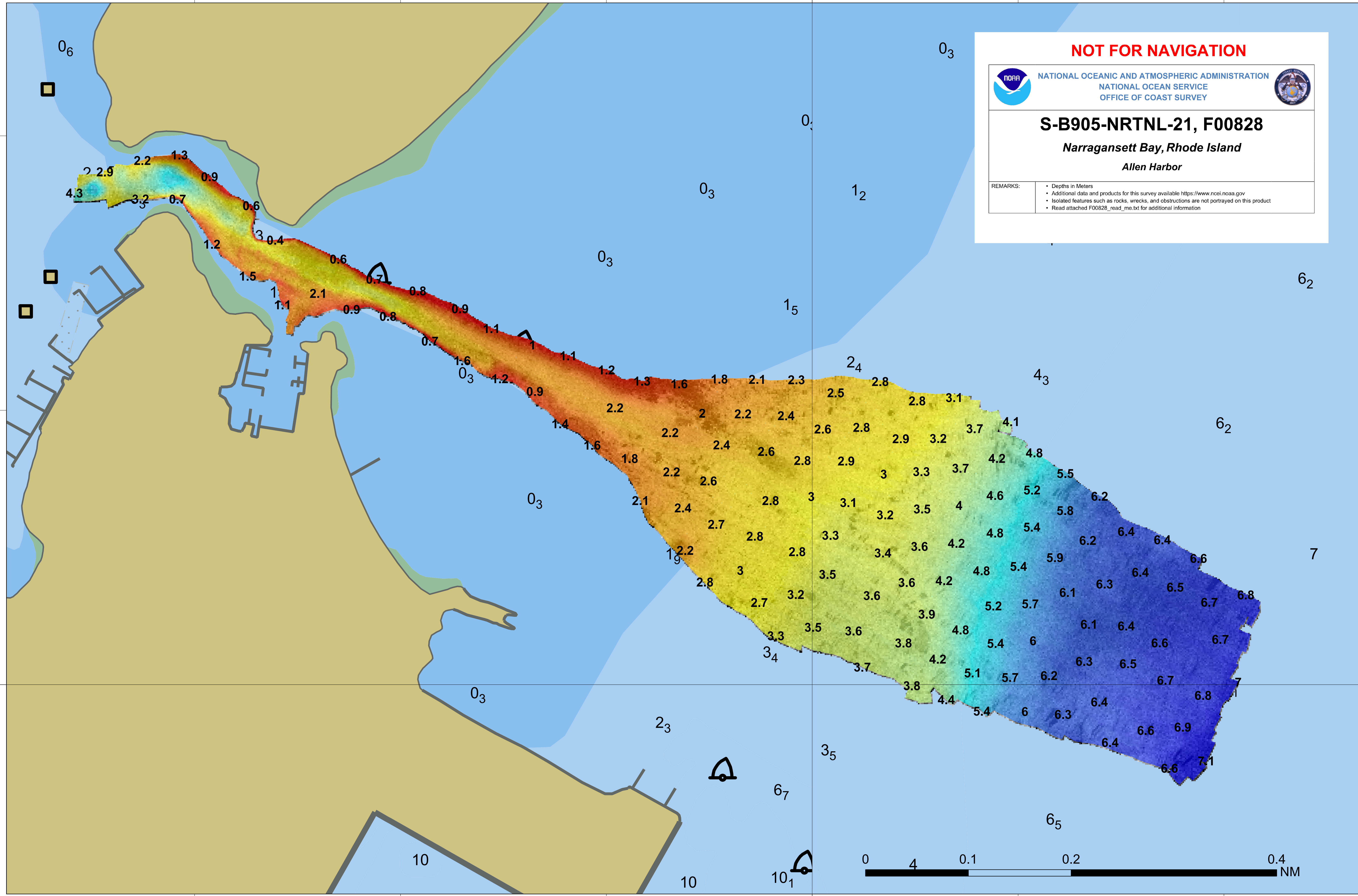
S-B905-NRTNL-21, F00828

Narragansett Bay, Rhode Island

Allen Harbor

REMARKS:

- Depths in Meters
- Additional data and products for this survey available <https://www.ncei.noaa.gov>
- Isolated features such as rocks, wrecks, and obstructions are not portrayed on this product
- Read attached F00828_read_me.txt for additional information



41°37'0"N

41°37'0"N

71°24'0"W

