

132°51'W

132°48'W

NOT FOR NAVIGATION



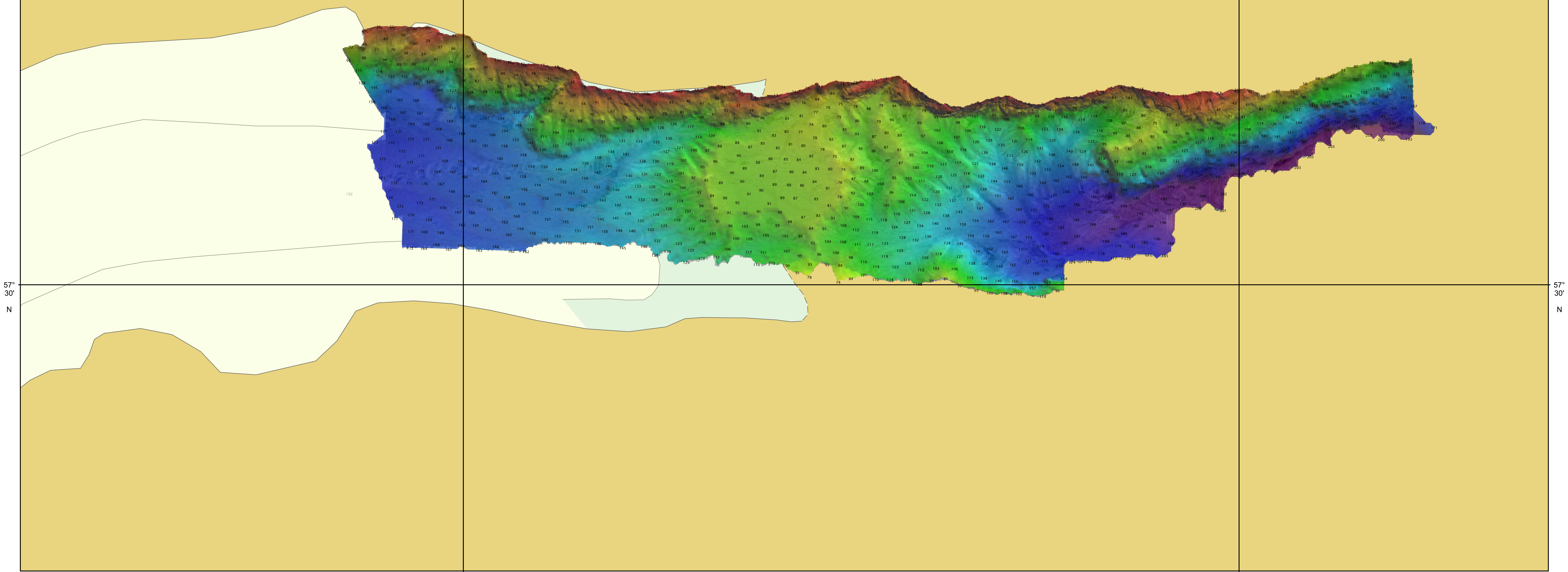
NATIONAL OCEANIC AND ATMOSPHERIC ADMINISTRATION
NATIONAL OCEAN SERVICE
OFFICE OF COAST SURVEY



OPR-O190-RA-21, F00833

*West Prince of Wales Island, AK
Dawes Glacier*

REMARKS: - Depths in Meters
- Additional data and products for this survey available <https://www.ncei.noaa.gov>
- Isolated features such as rocks, wrecks, and obstructions are not portrayed on this product
- Read attached F00833_read_me.txt for additional information



57°
30'
N

57°
30'
N

132°51'W

132°48'W