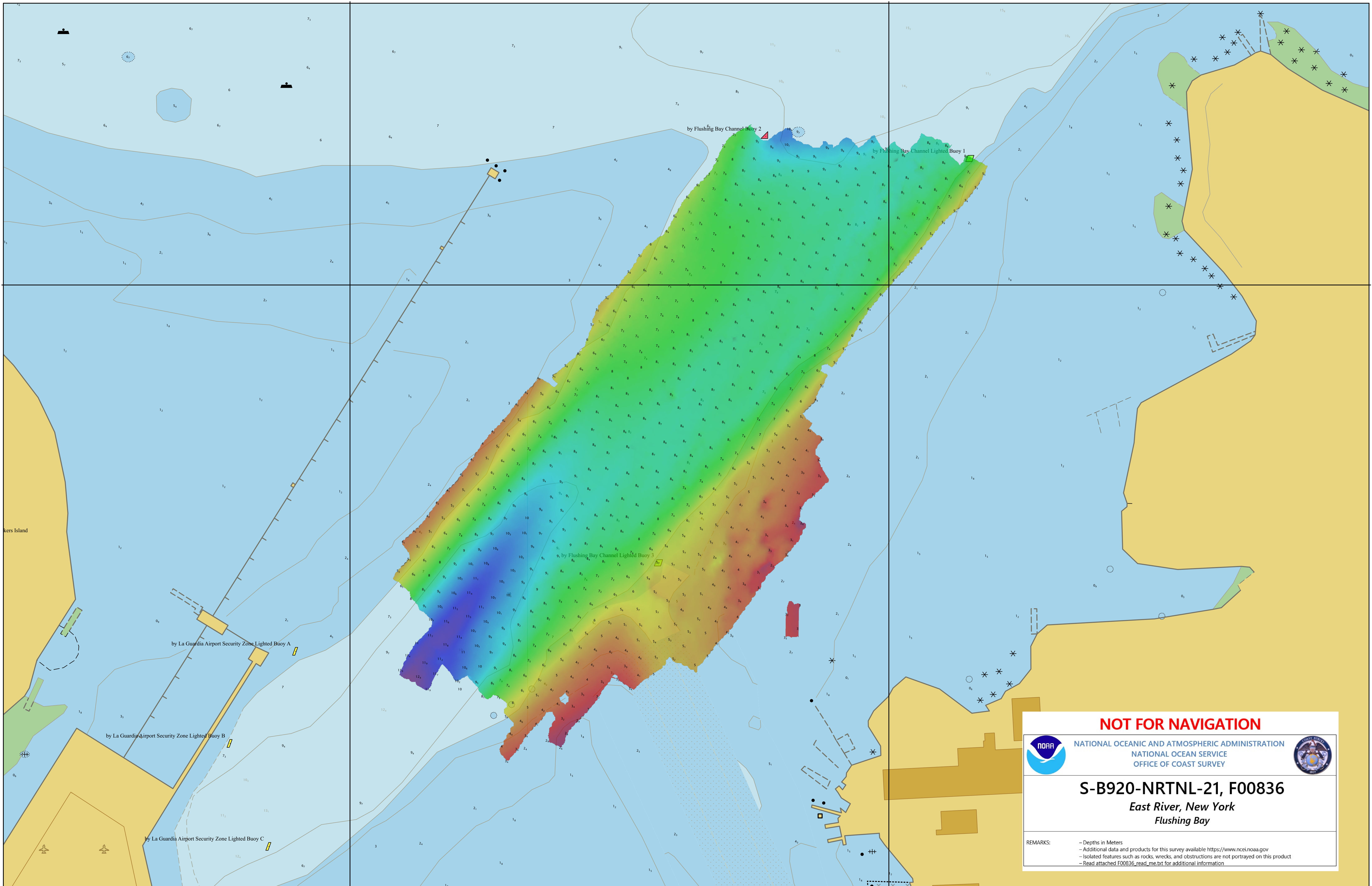


73°52'W

73°51'30"W

40° 47' 30" N

40° 47' 30" N



NOT FOR NAVIGATION



NATIONAL OCEANIC AND ATMOSPHERIC ADMINISTRATION
NATIONAL OCEAN SERVICE
OFFICE OF COAST SURVEY



S-B920-NRTNL-21, F00836

*East River, New York
Flushing Bay*

REMARKS:

- Depths in Meters
- Additional data and products for this survey available <https://www.ncei.noaa.gov>
- Isolated features such as rocks, wrecks, and obstructions are not portrayed on this product
- Read attached F00836_read_me.txt for additional information

73°52'W

73°51'30"W