

90°38'0"W

90°31'0"W

90°24'0"W

90°17'0"W

29°14'0"N

29°14'0"N

29°7'0"N

29°7'0"N

29°0'0"N

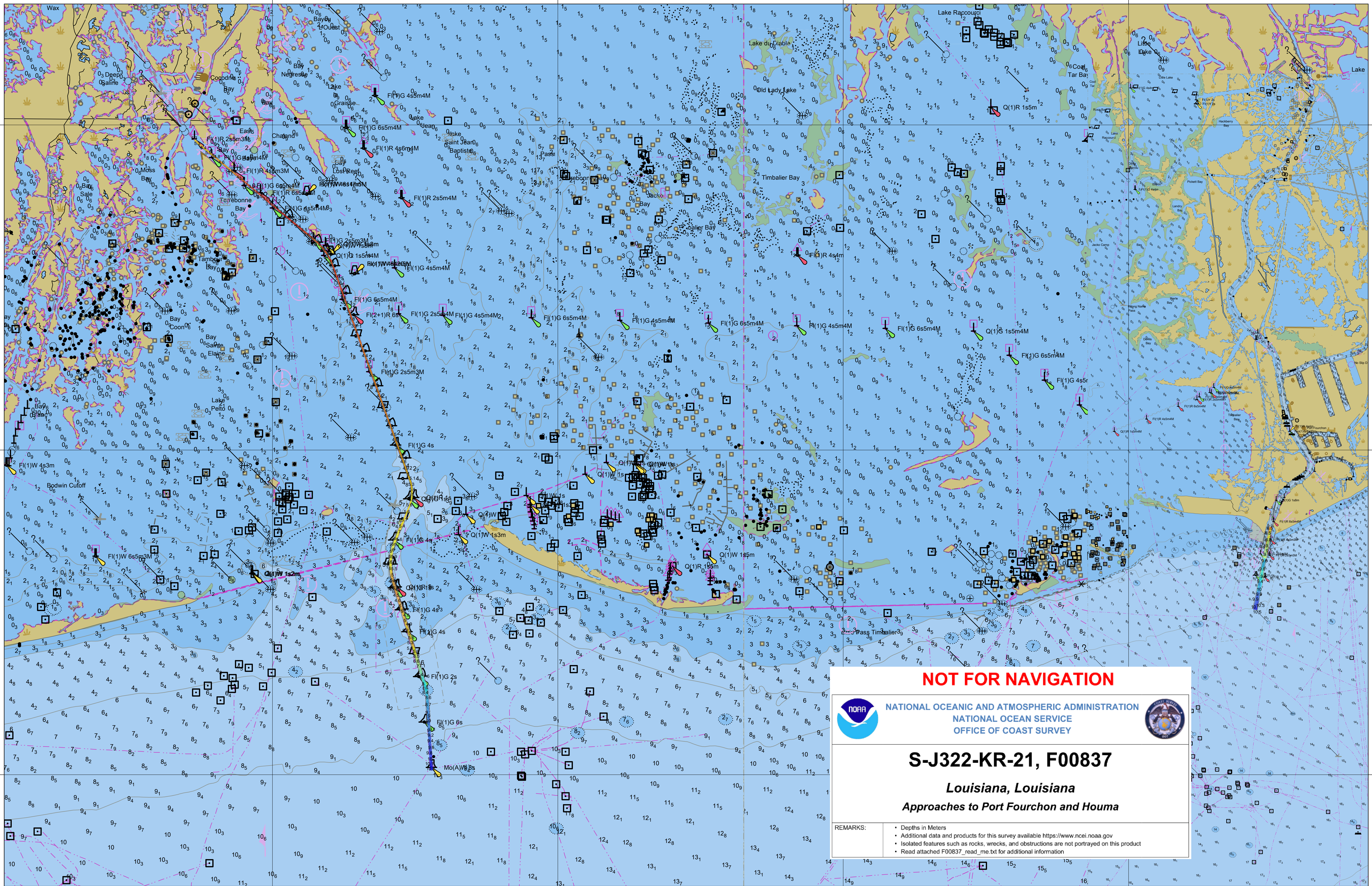
29°0'0"N

90°38'0"W

90°31'0"W

90°24'0"W

90°17'0"W



NOT FOR NAVIGATION



NATIONAL OCEANIC AND ATMOSPHERIC ADMINISTRATION
 NATIONAL OCEAN SERVICE
 OFFICE OF COAST SURVEY



S-J322-KR-21, F00837

Louisiana, Louisiana
 Approaches to Port Fourchon and Houma

REMARKS:

- Depths in Meters
- Additional data and products for this survey available <https://www.ncei.noaa.gov>
- Isolated features such as rocks, wrecks, and obstructions are not portrayed on this product
- Read attached F00837_read_me.txt for additional information