

119°33'0"W

119°30'0"W

119°27'0"W

119°24'0"W

34°21'0"N

34°21'0"N

34°18'0"N

34°18'0"N

34°15'0"N

34°15'0"N

34°12'0"N

34°12'0"N

34°9'0"N

34°9'0"N

NOT FOR NAVIGATION



NATIONAL OCEANIC AND ATMOSPHERIC ADMINISTRATION
NATIONAL OCEAN SERVICE
OFFICE OF COAST SURVEY

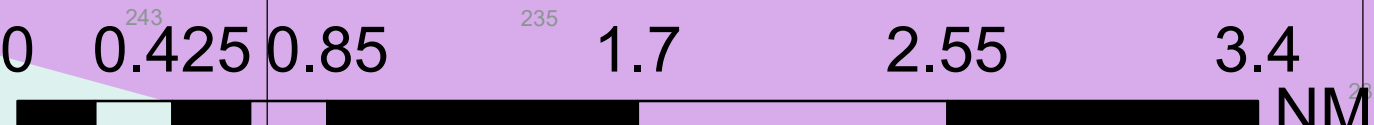


OPR-L397-FA-21, F00844

CINMS and BOEM Investigations, California
BOEM Platforms and Pipeline Investigation

REMARKS:

- Depths in Meters
- Additional data and products for this survey available <https://www.ncei.noaa.gov>
- Isolated features such as rocks, wrecks, and obstructions are not portrayed on this product
- Read attached F00844_read_me.txt for additional information

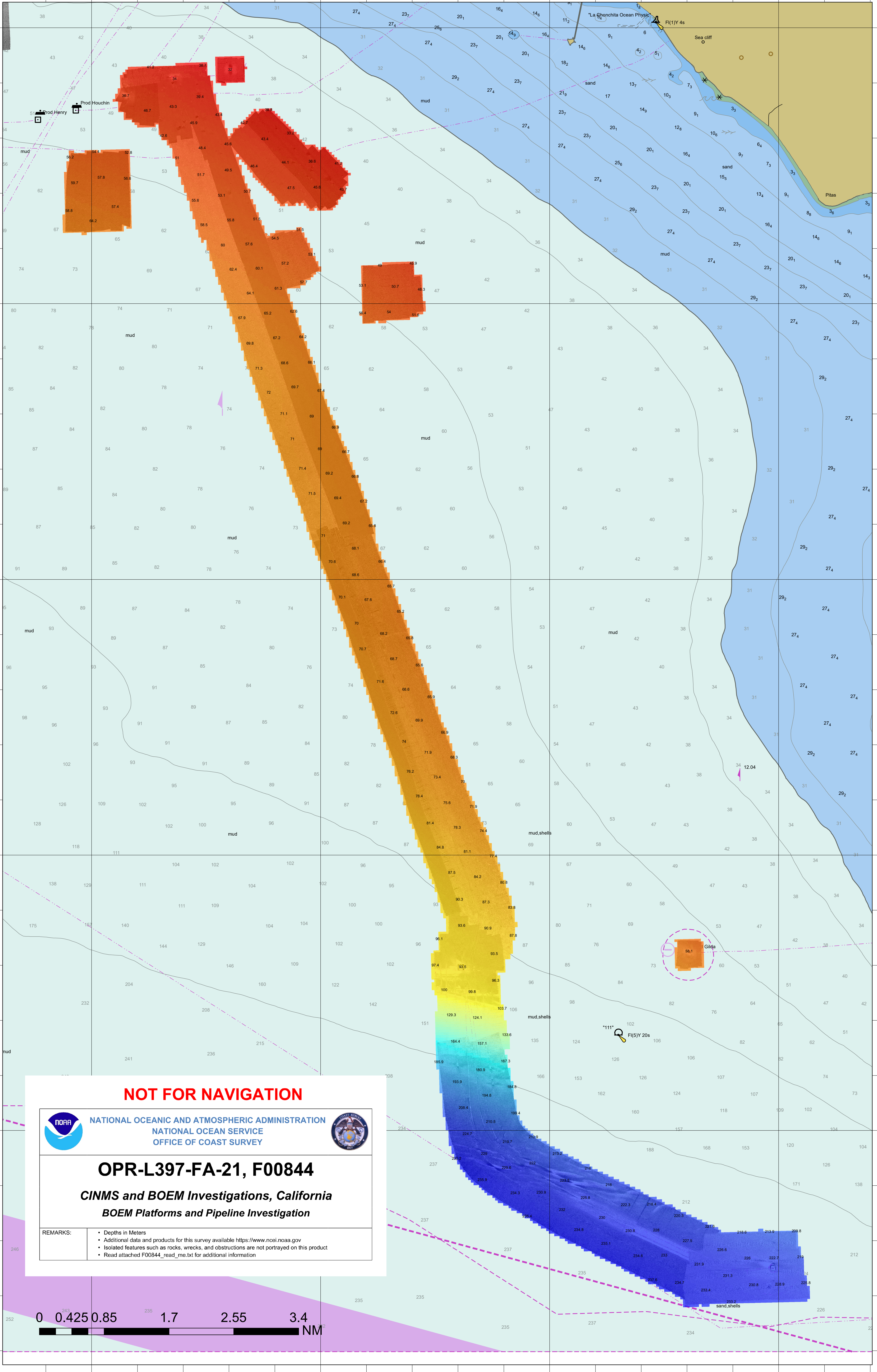


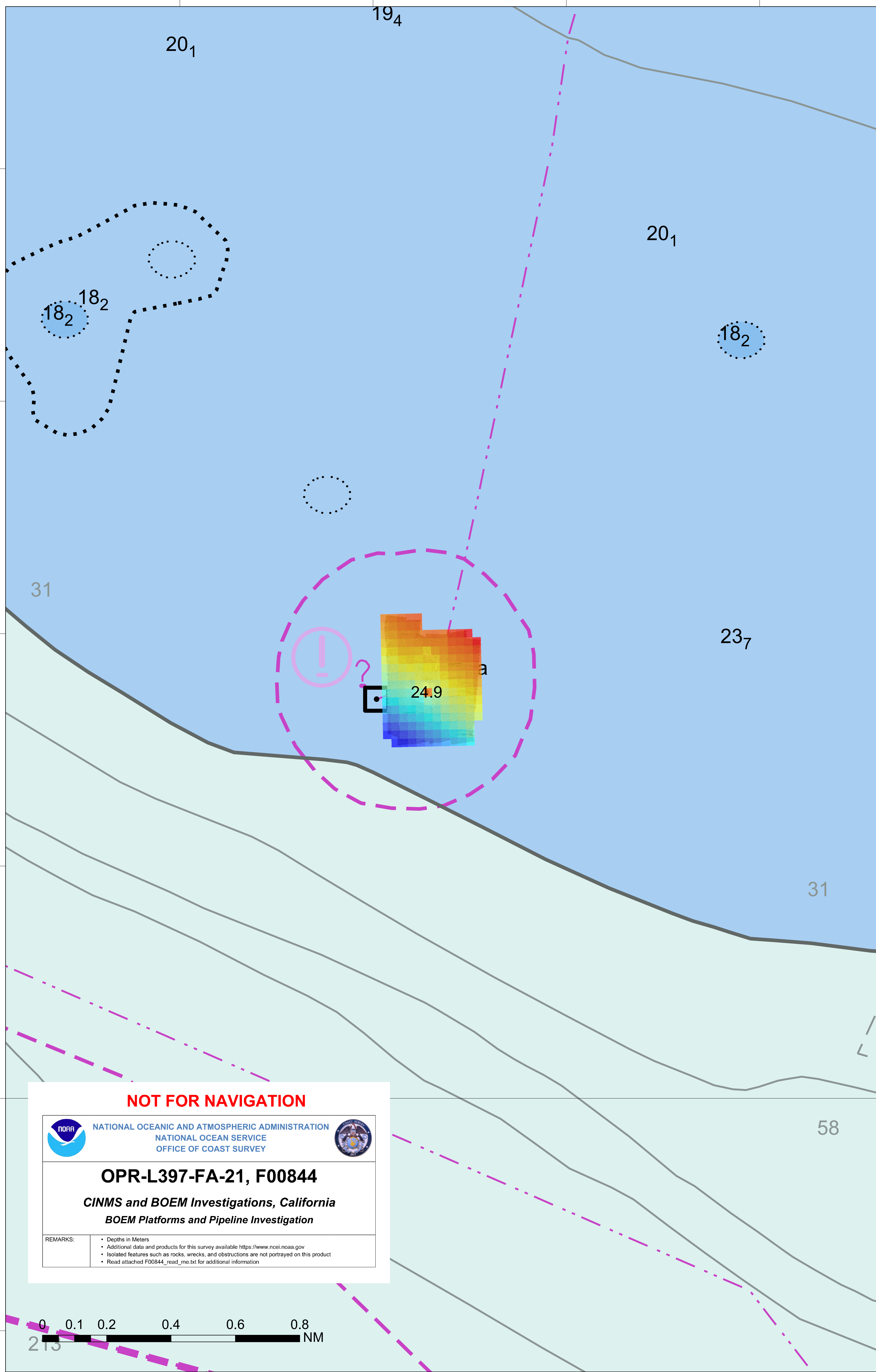
119°33'0"W

119°30'0"W

119°27'0"W

119°24'0"W





NOT FOR NAVIGATION



NATIONAL OCEANIC AND ATMOSPHERIC ADMINISTRATION
NATIONAL OCEAN SERVICE
OFFICE OF COAST SURVEY



OPR-L397-FA-21, F00844

CINMS and BOEM Investigations, California
BOEM Platforms and Pipeline Investigation

REMARKS:

- Depths in Meters
- Additional data and products for this survey available <https://www.ncei.noaa.gov>
- Isolated features such as rocks, wrecks, and obstructions are not portrayed on this product
- Read attached F00844_read_me.txt for additional information

0 0.1 0.2 0.4 0.6 0.8 NM

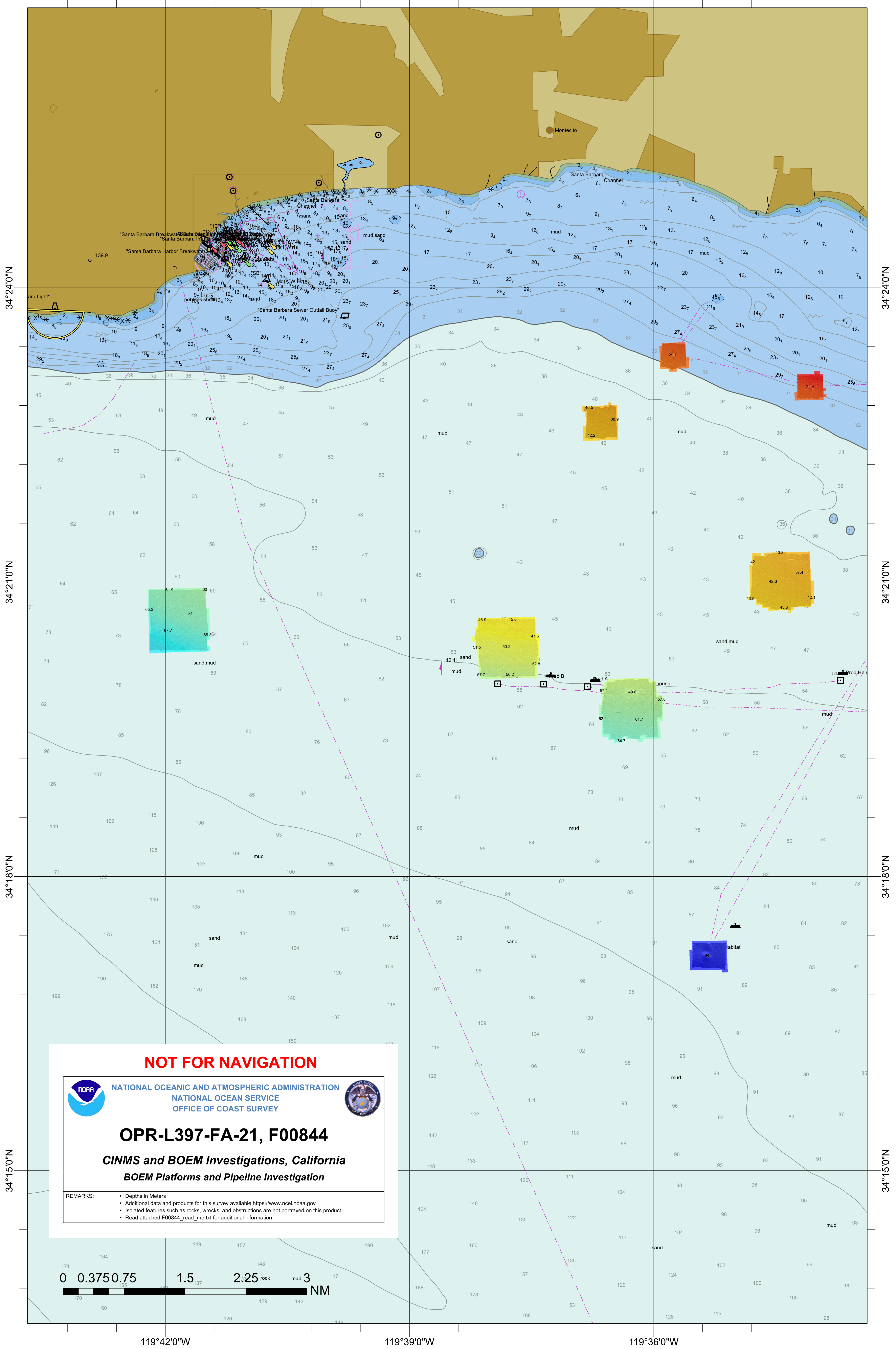
34°6'0"N

34°6'0"N

119°42'0"W

119°39'0"W

119°36'0"W



34°24'0"N

34°24'0"N

34°21'0"N

34°21'0"N

34°18'0"N

34°18'0"N

34°15'0"N

34°15'0"N

NOT FOR NAVIGATION



NATIONAL OCEANIC AND ATMOSPHERIC ADMINISTRATION
NATIONAL OCEAN SERVICE
OFFICE OF COAST SURVEY



OPR-L397-FA-21, F00844

CINMS and BOEM Investigations, California
BOEM Platforms and Pipeline Investigation

REMARKS:

- Depths in Meters
- Additional data and products for this survey available <https://www.ncei.noaa.gov>
- Isolated features such as rocks, wrecks, and obstructions are not portrayed on this product
- Read attached F00844_read_me.txt for additional information

0 0.375 0.75 1.5 2.25 rock mud 3 171
170 160 126 129 142 NM

119°42'0"W

119°39'0"W

119°36'0"W

120°42'0"W

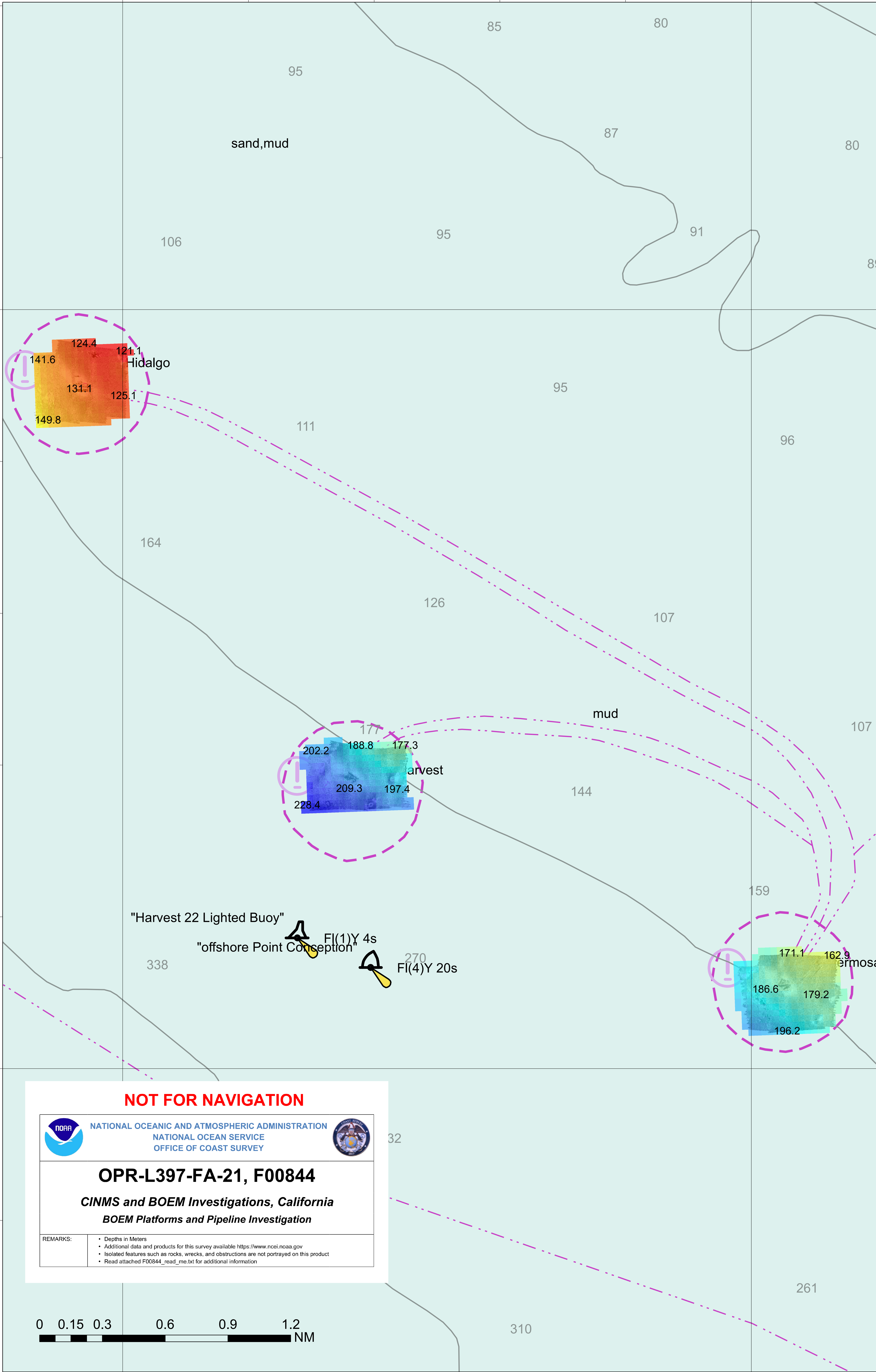
120°39'0"W

34°30'0"N

34°30'0"N

34°27'0"N

34°27'0"N



NOT FOR NAVIGATION



NATIONAL OCEANIC AND ATMOSPHERIC ADMINISTRATION
NATIONAL OCEAN SERVICE
OFFICE OF COAST SURVEY

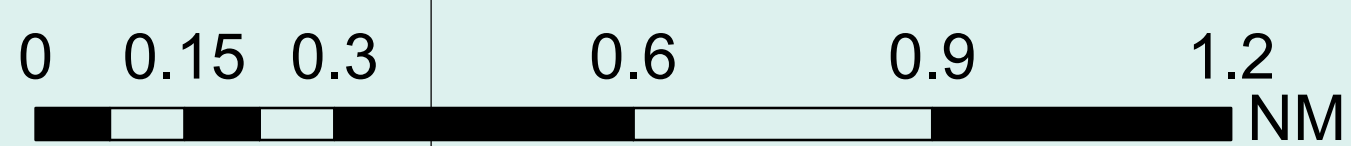


OPR-L397-FA-21, F00844

CINMS and BOEM Investigations, California
BOEM Platforms and Pipeline Investigation

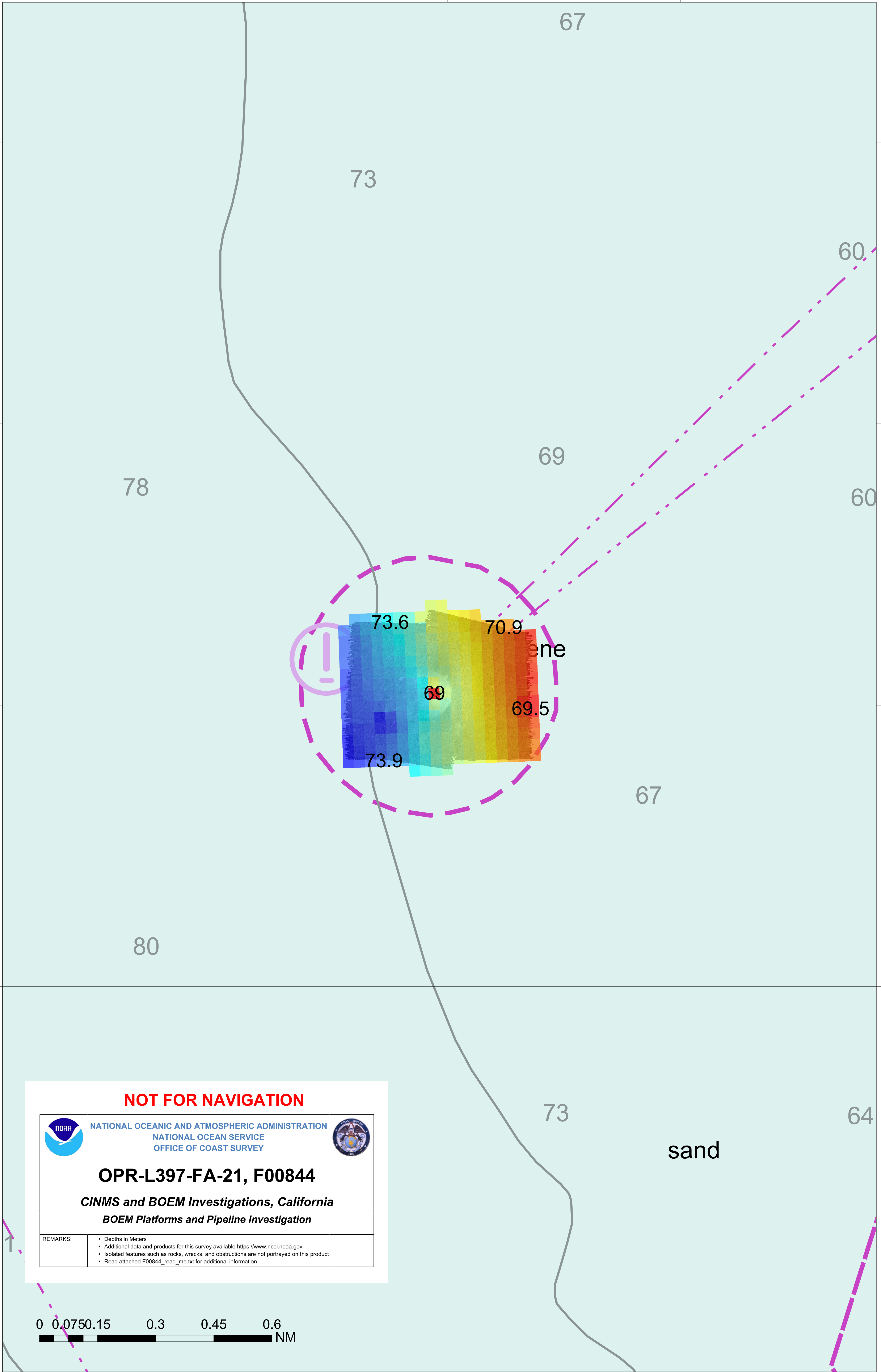
REMARKS:

- Depths in Meters
- Additional data and products for this survey available <https://www.ncei.noaa.gov>
- Isolated features such as rocks, wrecks, and obstructions are not portrayed on this product
- Read attached F00844_read_me.txt for additional information



120°42'0"W

120°39'0"W



NOT FOR NAVIGATION



NATIONAL OCEANIC AND ATMOSPHERIC ADMINISTRATION
NATIONAL OCEAN SERVICE
OFFICE OF COAST SURVEY



OPR-L397-FA-21, F00844

CINMS and BOEM Investigations, California
BOEM Platforms and Pipeline Investigation

REMARKS:

- Depths in Meters
- Additional data and products for this survey available <https://www.ncei.noaa.gov>
- Isolated features such as rocks, wrecks, and obstructions are not portrayed on this product
- Read attached F00844_read_me.txt for additional information

