

94°54'0"W

94°51'0"W

94°48'0"W

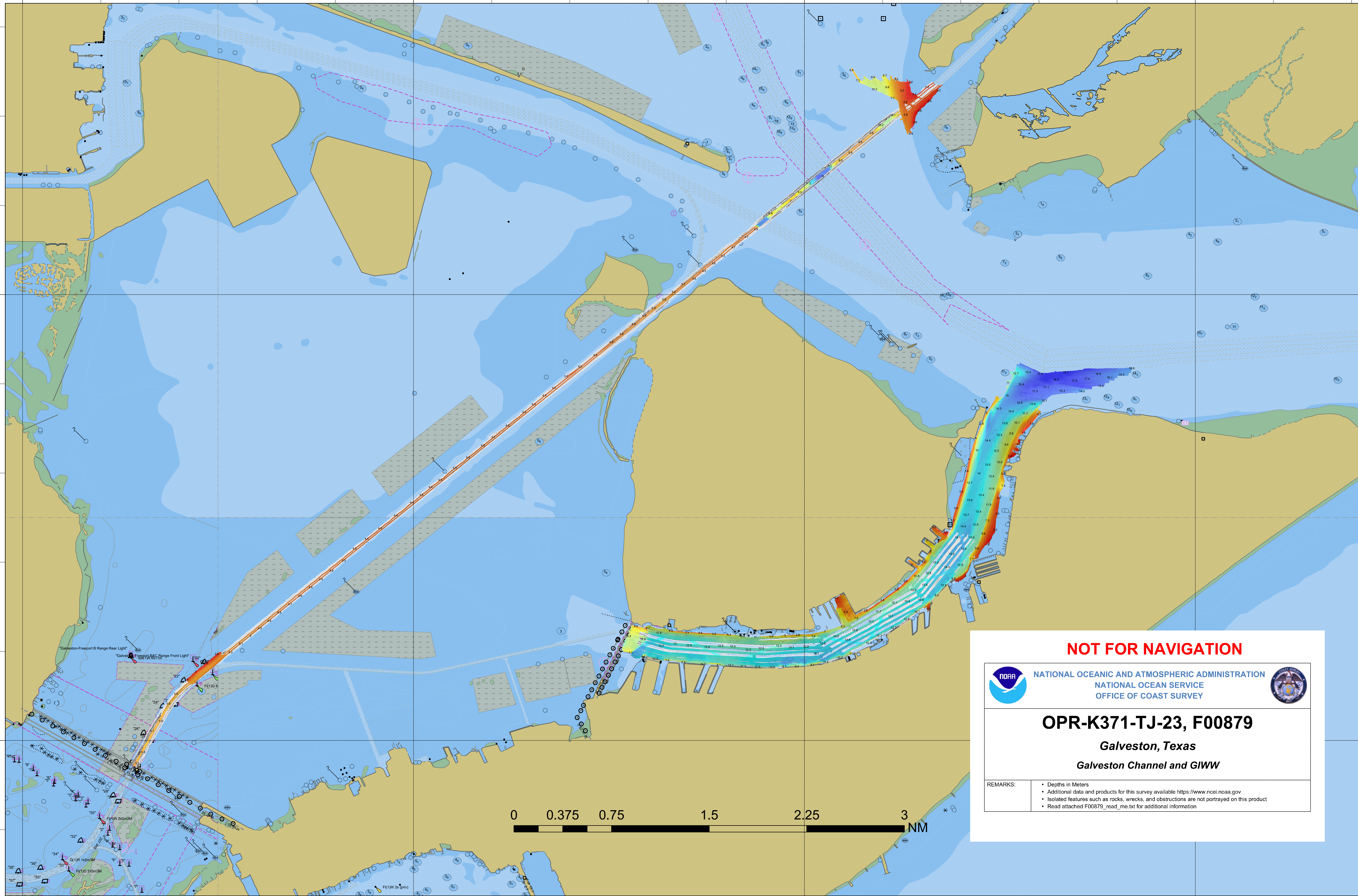
94°45'0"W

29°21'0"N

29°21'0"N

29°18'0"N

29°18'0"N



**NOT FOR NAVIGATION**



NATIONAL OCEANIC AND ATMOSPHERIC ADMINISTRATION  
NATIONAL OCEAN SERVICE  
OFFICE OF COAST SURVEY



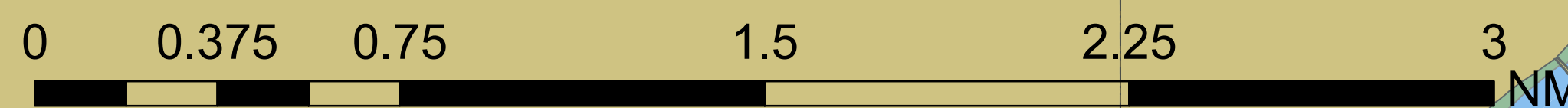
**OPR-K371-TJ-23, F00879**

**Galveston, Texas**

**Galveston Channel and GIWW**

REMARKS:

- Depths in Meters
- Additional data and products for this survey available <https://www.noel.noaa.gov>
- Isolated features such as rocks, wrecks, and obstructions are not portrayed on this product
- Read attached F00879\_read\_me.txt for additional information



94°54'0"W

94°51'0"W

94°48'0"W

94°45'0"W

94°42'0"W

94°39'0"W

29°21'0"N

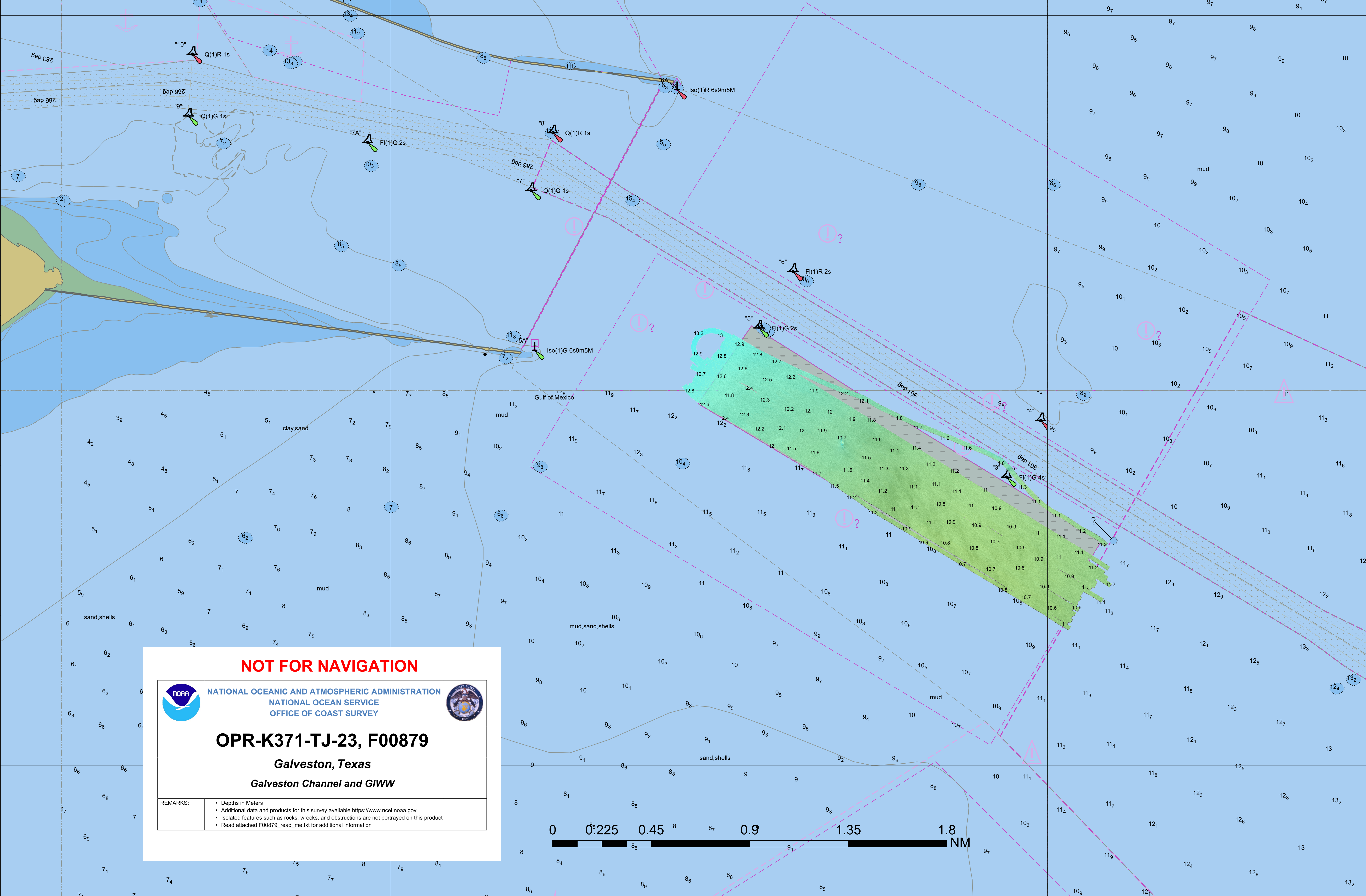
29°21'0"N

29°18'0"N


29°18'0"N

94°42'0"W


94°39'0"W



**NOT FOR NAVIGATION**



**NATIONAL OCEANIC AND ATMOSPHERIC ADMINISTRATION**  
**NATIONAL OCEAN SERVICE**  
**OFFICE OF COAST SURVEY**



**OPR-K371-TJ-23, F00879**

**Galveston, Texas**

**Galveston Channel and GIWW**

REMARKS:	<ul style="list-style-type: none"> <li>• Depths in Meters</li> <li>• Additional data and products for this survey available <a href="https://www.ncei.noaa.gov">https://www.ncei.noaa.gov</a></li> <li>• Isolated features such as rocks, wrecks, and obstructions are not portrayed on this product</li> <li>• Read attached F00879_read_me.txt for additional information</li> </ul>
----------	--

