

76°25'0"W

76°24'0"W

76°23'0"W

38°58'0"N

38°58'0"N

38°57'0"N

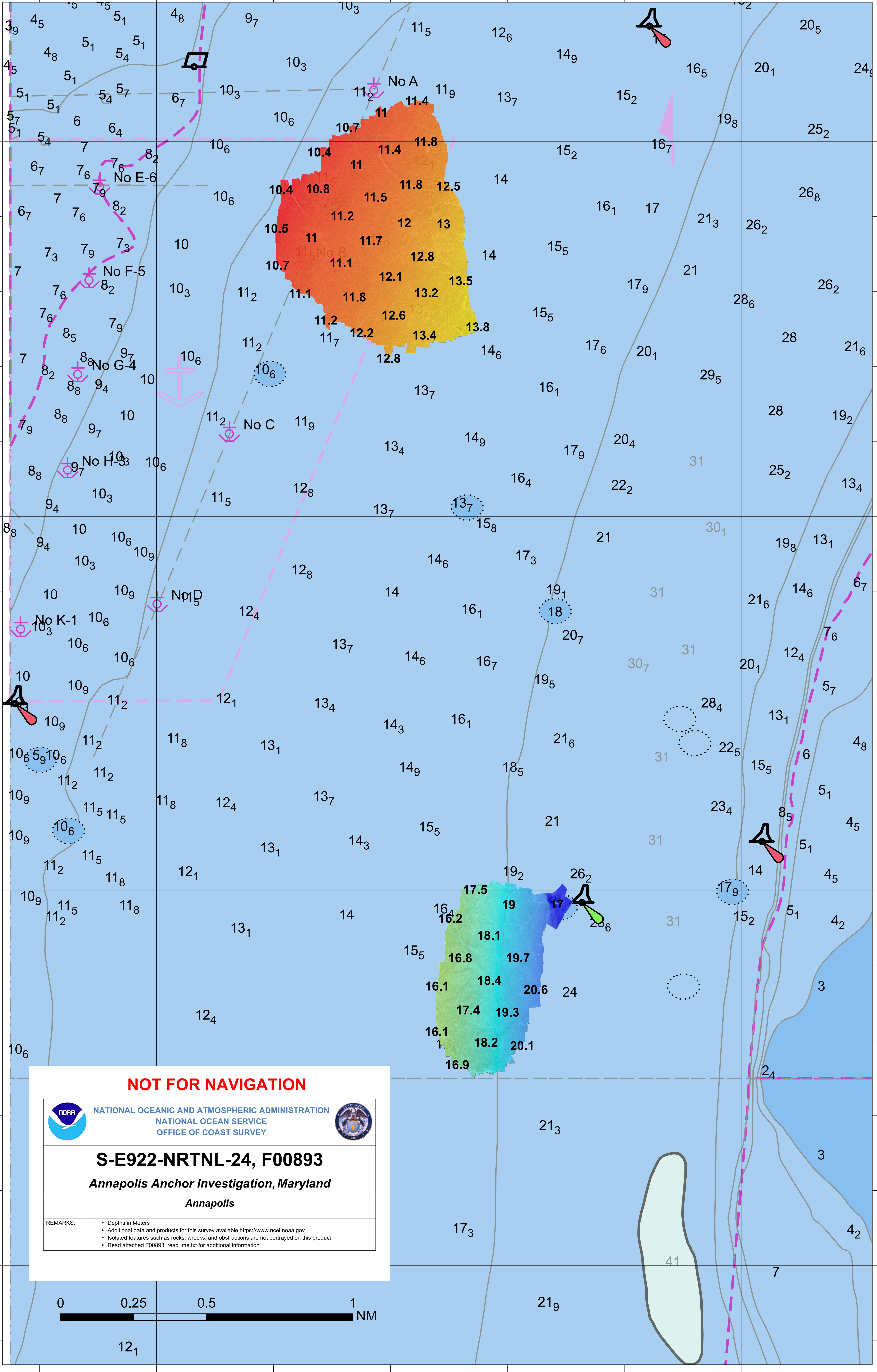
38°57'0"N

38°56'0"N

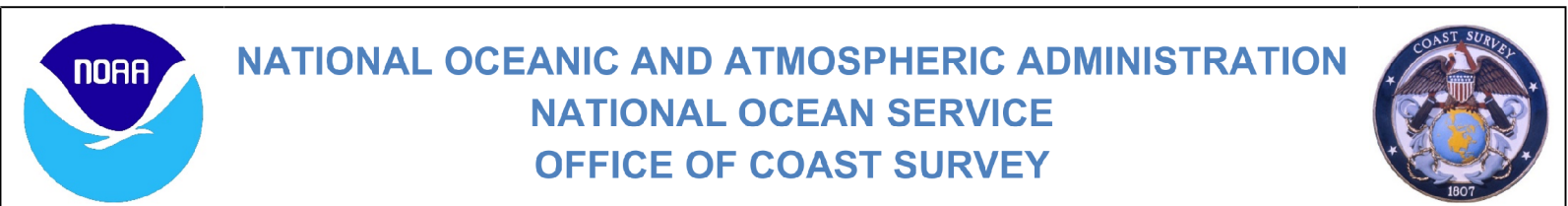
38°56'0"N

38°55'0"N

38°55'0"N

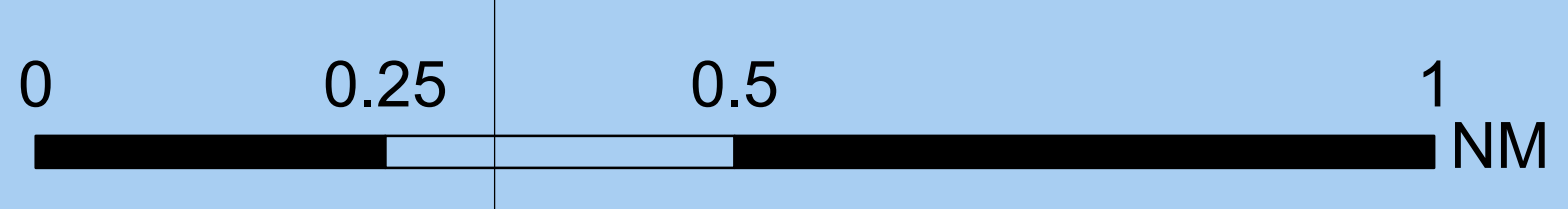


NOT FOR NAVIGATION



S-E922-NRTNL-24, F00893
Annapolis Anchor Investigation, Maryland
Annapolis

REMARKS:
 • Depths in Meters
 • Additional data and products for this survey available <https://www.ncei.noaa.gov>
 • Isolated features such as rocks, wrecks, and obstructions are not portrayed on this product
 • Read attached F00893_read_me.txt for additional information



76°25'0"W

76°24'0"W

76°23'0"W