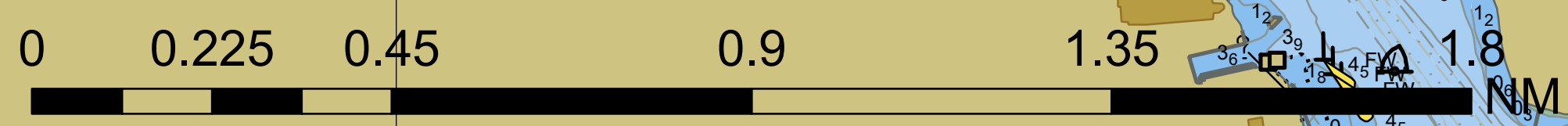
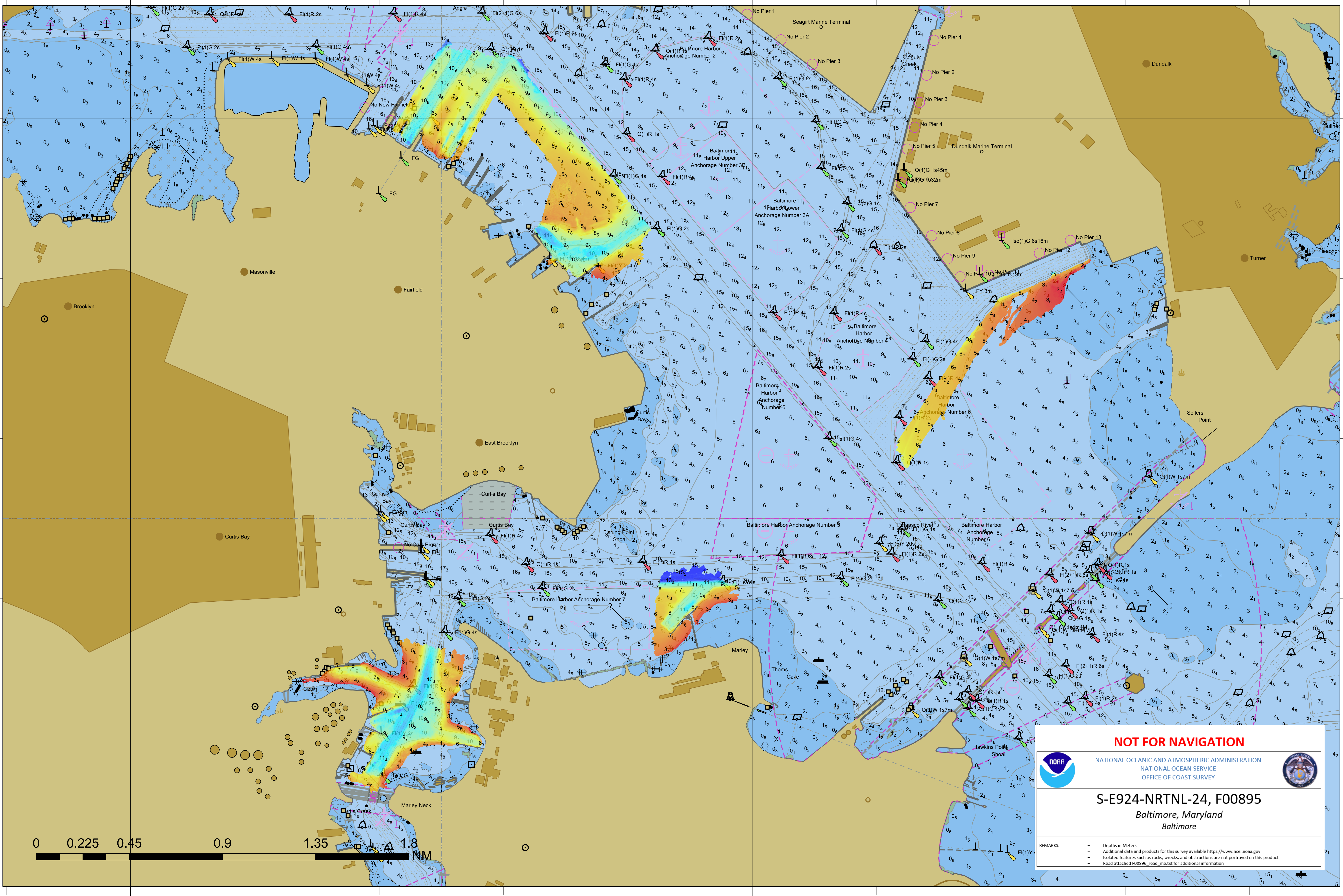


76°36'0"W

76°33'0"W

39°15'0"N

39°15'0"N



NOT FOR NAVIGATION

NATIONAL OCEANIC AND ATMOSPHERIC ADMINISTRATION
NATIONAL OCEAN SERVICE
OFFICE OF COAST SURVEY

S-E924-NRTNL-24, F00895
Baltimore, Maryland
Baltimore

REMARKS:

- Depths in Meters
- Additional data and products for this survey available <https://www.ncei.noaa.gov>
- Isolated features such as rocks, wrecks, and obstructions are not portrayed on this product
- Read attached F00895_read_me.txt for additional information

76°36'0"W

76°33'0"W