

# 3038

Diag. Cht. No. 17-2



17

Department of Commerce and Labor  
COAST AND GEODETIC SURVEY

*J. H. Littmann*  
Superintendent.

State: *Virginia*

### DESCRIPTIVE REPORT.

*Hydro* Sheet No. *3038*

LOCALITY:

*Rappahannock River, Snickers  
Creek to Dangerfield Short  
Turn, Hydro Topo.*

1909

CHIEF OF PARTY:

*O. W. Ferguson*

# 3038

# 3038

COAST AND  
GEODETIC SURVEY

JAN 17 1910

REFERRED TO:

DEPARTMENT OF COMMERCE AND LABOR.

COAST AND GEODETIC SURVEY.

O. H. TITTMANN, Superintendent.

C. & G. SURVEY,  
LIBRARY AND ARCHIVES

JAN 17 1910

Acc No.

Resurvey of the Chesapeake Bay, Virginia.

Revision of the Rappahannock River.

TITLE SHEET.

Descriptive Report of Topographic & Hydrographic

Sheet , Register Number. ~~435~~ 3038

Western Shore Chesapeake Bay, between

Latitude 38 14 40 to 38 19 30 N.

Longitude 77 22 55 to 77 28 23 W.

SCALE 1:10000.

From November 4, 1909 to December 16, 1909.

SCHOONER "MATCHLESS".

O. W. Ferguson, Assistant, C. & S. In Command.

OBSERVERS.

O. W. Ferguson, Assistant; James E. Marsh, Mate;

E. E. Smith, Aid; John W. Clift, Chief Writer.

RECORDERS.

John W. Clift, C.W.; H. W. Godsey, Wr. 2cl.

LEADSMEN.

M. L. Tabor, S.M.M.; W.W. Holland, Q.M. 3c.

TIDE OBSERVERS.

C. P. Holland, Chief Boatswains Mt.

W. W. Holland, Qr. Mr. 3d. cl.

N. E. Lusby, S e a m a n.

POST-OFFICE ADDRESS: TAPPAHANNOCK, VA.

TELEGRAPH ADDRESS:

EXPRESS OFFICE:

RECEIVED  
BY ASSISTANT IN CHARGE  
AND REFERRED TO  
JAN 27 1910

*L. S. ...*

COAST AND  
GEODETIC SURVEY

JAN 27 1910

REFERRED TO  
*Assistant in Charge*

Department of Commerce and Labor  
COAST AND GEODETIC SURVEY

SCHOONER "MATCHLESS",

TAPPAHANNOCK, VA.,

JANUARY 24, 1910.

Mr. O. H. Tittmann,  
Superintendent, C. & G. Survey,  
Washington, D. C.

Sir:-

I have the honor to inform you that an error was made putting the limits of the work on the Descriptive Report of Sheet 435 and it should be changed as follows:

Latitude 38 13 15 to 38 15 30 N.

Longitude 77 15 20 to 77 23 15 W.

Respectfully yours,

*O. W. Ferguson*

Assistant, C. & G. Survey,

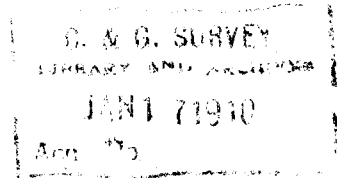
Commanding.

POST-OFFICE ADDRESS:

TELEGRAPH ADDRESS:

EXPRESS OFFICE:

# 3038



Department of Commerce and Labor  
COAST AND GEODETIC SURVEY

SCHOONER "MATCHLESS",

FREDERICKSBURG, VA.,

JANUARY 8, 1910/

DESCRIPTIVE REPORT OF THE ~~TOPOGRAPHIC AND~~ HYDROGRAPHIC  
3038  
SHEET REGISTER NUMBER.

No old stations were recovered on this sheet. But the topography is of a pretty permanent nature- the river is narrow being from 100 to 300 metres wide, and though one side or the other is usually swampy the opposite is of high land and furnishes location from its contours, bends, creeks, and points.

Isolated surveys each of about a half mile in length have been made by the U. S. Engineers at six different places on this sheet namely 8.5, 9.5, 10.5, 12.5, 13.5 and 17 miles respectively below the railroad bridge at Fredericksburg, Va. At the 1st., 4th., and 5th. of these places dikes have been built and the channel dredged.

These dikes were located by the plane table and stretches of topography was run at seven other places where there seemed to be some new development.

### SURFACE.

There are ~~many~~ areas of swampy land from side to side along the river, opposite these there is higher land, undulating, rising from a few feet to 100 feet above mean tide.

The bottom of the river is mud silt or sand.

# 2. O.W.F. Desc. Rept. ~~T. & H. Sheet 435~~<sup>3038</sup> 1/8/1910.

The sub soil is of yellowish clay and the soil is of silt free from gravel and stone and works and washes easily.

There are patches of timber everywhere and the banks of the river and land near by is very commonly covered with trees and brush.

The land is all occupied as farms and a considerable portion of it cultivated.

#### TOPOGRAPHY.

The tracing is an exact copy of the skeleton of the old original sheet. All features not now appearing are left off and the new features put on this tracing. The shore lines, topography and conventional signs covering areas with grass, marsh, wood, etc., not disturbed by new work will be the same as on old sheets- this also refers to the contours.

#### HYDROGRAPHY.

The hydrography consists of cross lines about every 170 metres and one channel line. These lines were quite well located by the topography and the lines run on compass course and range under even speed from bank to bank, thus giving the location of the soundings.

#### LANDINGS.

Arnolds on the North bank 16 1/2 miles below Fredericksburg and Hayfield on the South bank 10 miles below Fredericksburg are the only landings on this sheet and the latter seems to be a private landing and not much used.

#### CREEKS.

The creeks such as Lambs, Denophans, Moss Neck, W. P.

Taylor's and Muddy Creek are all shallow having low shores and are of small consequence.

#### PRODUCTS.

The products are miscellaneous and moderate in quantity, such as corn, wheat, peas, poultry, eggs, cattle, sheep and lumber.

This is a good river for navigation, but it has not made the people living along it and shipping by it particularly prosperous. It is a tidal river to the head of navigation and over this sheet the highest currents approach 2 miles an hour.

#### SAILING DIRECTIONS.

The channel of this river is quite Canal like and permanent, by consulting the printed charts as one progresses the deep water can be easily located.

*O. W. Ferguson*

Assistant.

# 3038

LIBRARY AND ARCHIVES  
JAN 1 7 1910  
Acc. No.

LIST OF PLANE TABLE POINTS FROM OLD & NEW TOPOGRAPHY FURNISHING THE CONTROL OF WORK ON SHEET NUMBER <sup>3038</sup> ~~435~~

Point	Latitude	Longitude	Point Located by
CORBIN Corbins House			Old & New T.
BARN Granary on bluff			New Topy.
GOULDIN Goulding House			" "
SNOWDEN House on bluff			" "
EMERSON Emersons House			" "
HAYFIELD Lewis' wharf			" "
DIKE N. E. corner of dike about one mile above Hayfield			" "
FERRY Ferry Farm House			" "

# 3038

C. & G. SURVEY,  
LIBRARY AND ARCHIVES  
JAN 17 1910  
Acc. No.

*Hyd C* 3038  
STATISTICS Sheet No. ~~436~~

DATE 1909.	Letter	Vols.	Positions	Soundings	Miles Statute	Vessel.
November 4	a a	1	20	100	1.5	Whaleboat
8	b b	1	77	450	7.8	
22	c c	1	103	468	10.7	
December 16	d d	1	7	39	0.1	
Total	4	1	207	1057	20.1	

*Soundings plotted in feet.*

*Plotted & inked by R. L. Johnston.*



V.E.C.  
Feb. 14, 1910.

HYDROGRAPHIC SHEET NO. 3038.

*H. E. Dwin*  
*2/14/10*

Rappahannock River, Skinkers to Belvedere, Virginia.  
By Asst. O. W. Ferguson in 1909.

Lat. 38°13'15" to 38°15'30" N.

Long. 77 15 20 " 77 23 15 W.

TIDES.

	Front Royal ft.	Fredericksburg ft.
Mean low water, or plane of reference on staff	3.3	2.2
Lowest tide observed " "	-1.0	0.2
Highest " " " "	9.0	35.0
Mean range of tide	1.9	2.8

Coast and Geodetic Survey

FEB 14 1910

TIDAL DIVISION

Hyd Sheet 3038

This work is not reliable, due mostly to poor control

As no sextant <sup>angle,</sup> were taken and the positions were not described, the position of lines as placed on the sheet by field party had to be accepted without question, although some lines are shown in different positions on the boat sheet than on the tracing.

Some of the crossings were poor, especially on the line from 85c to 92c, which was adjusted to improve them.

In running the channel line, at least the approximate distance to the nearest bank, could have been given at intervals.

R. L. Johnston

Draftsman.

7/26/10.