

83
SHA
1910
D

3212

C. & G. SURVEY
LIBRARY AND ARCHIVES
JAN 9 1911
Acad. Div.

Diag. Cit. No. 8201-2

Department of Commerce and Labor
COAST AND GEODETIC SURVEY

Superintendent.

State: *Alaska*

DESCRIPTIVE REPORT.

Hyd. Sheet No. *3212*

LOCALITY:

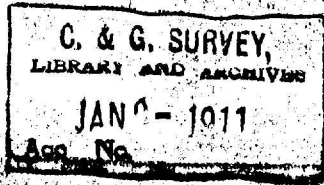
Wrangell Strait
Green Pt. to Woody

19*10*

CHIEF OF PARTY:

R. B. Erickson

3212



3212

Hydrographic Sheet No. 4.3212

Wrangell Straits,

S.E. Alaska.

From ~~Vexation Point~~ to Green Point. *to Hovey I.*

Scale 1:5000

Launch No. 117.

From August 15, to October 12,

1910.

U.S.S. "GEDNEY"

R.B. Derickson, Asst., Comdg. J.M. Coleman, Mate.

Chief of Party.

In charge of Sounding Pty.

*Soundings plotted & ranked by W.S.
" verified by R.L.J.*

3212

COAST AND
GEODETIC SURVEY

JAN -9 1911

RECEIVED TO:

C. & G. SURVEY,
LIBRARY AND ARCHIVES

JAN -9 1911

Acc. No.

Descriptive Report
to
accompany
Hydrographic Sheet No. 4. 3212
Wrangell Straits,
S.E. Alaska.
U.S.S. "GEDNEY"
1910.
R.B. Derickson, Asst., Comdg.
Chief of Party.

Descriptive Report to accompany Hydrographic

Sheet No. 4. 3212

3212

Wrangell Straits, S.E. Alaska.

This sheet covers the portion of Wrangell Narrows between Woody Island and Green Point, and the signals used in this work are as follows: 43, 41, 39, 37, 35, 31, 28, 30, 32, 34, 36, 38, which are old stations determined by the Army Engineers in 1902. and which are recovered and rebuilt. Fog and Red are new signals built for the hydrography only, and determined by the Plane-table. Isle is the Beacon on False Island Point determined by plane-table. Dol, Vex, Dor, and Jud, are four new dolphins which were erected by the Light-House Department. These were determined by the topographic party and transferred to Hydrographic Sheet. Mar, and Eld, are the two beacons on Green Rocks, determined by plane-table. Gabe is the gable of a house determined by the topographic party; there is some uncertainty about the position of this signal as transferred and its position on the hydrographic sheet should be checked from the topographic sheet now in the Office at Washington. For this reason positions nine in all which contained this signal are plotted but are not inked in on the smooth sheet. They will be found on pages 2, 4, 6, 18, 19, 26, of Vol. 9. "

SOUNDINGS.

All soundings are with the hand lead. As many soundings as possible were taken between positions. Sounding lines

were carried in as close as possible to the shore and in many cases there will be minus soundings at the end of the lines.

CURRENTS.

The velocity of the tidal currents is less here than any part of the Straits, as it is in this locality that the tides meet. The published chart and Pacific Coast Pilot both give Finger Point as the place where the tides meet, but it was found during this work that the tides meet at Green Point or little north of Green Point. The fishermen and people living in this locality report that the flood tide entering from the south end of the Straits meets the flood from the north end, as observed, between Green Point and Tonka Wharf, and the ebb tide divides at this same point.

DANGERS AND AIDS TO NAVIGATION.

The principal dangers are the rocky shoals off Danger Point and Rock Point, but as these are not marked and the currents are moderate a vessel should have no difficulty in this part of the Straits. In addition to the buoys and other aids to navigation which are already on the published chart and in the Pacific Coast Pilot there are three new dolphins which were driven last summer, the location of these are given on this sheet, the first one off Danger Point is a valuable aid to navigation and was very much needed in this place. A vessel bound north after passing between the red and black buoys off Vexation Point heads so as to pass this dolphin close on her

port side she is then clear of the rocky shoal off Danger Point and may steer so as to pass Green Rocks; and a vessel bound south after passing Green Rocks heads for this dolphin and when close to it changes course so as to pass between the Red and Black buoys off Vexation Point. The next dolphin called Dor in the records is just north of Finger Point and marks a prominent point of the south flat. The foot of this dolphin bares at low water and in passing this a vessel should not go too close to it, probably 100 feet off would be a safe distance, leaving it to port when bound north. A great number of sounding lines were run close together off this point, so the soundings when plotted will show how far it will be safe to pass it. At present the soundings are not plotted or reduced.

The next dolphin called in the records Jud, is on a prominent point of the north flat and is near buoy No. 14. A vessel should pass about 100 feet off this dolphin, leaving it to starboard when bound north.

ANCHORAGES:

There is good anchorage in the wide part of the channel off Finger Point. In anchoring here a vessel should be far enough over to the east side to be clear of the fairway; anchorage can be taken up in 7 to 9 fathoms, mud bottom. The tide is never strong here but there are constant light eddies.

CHARACTER OF THE BOTTOM.

From Rock Point north to the limits of this sheet the

bottom is all mud. South of Rock Point the bottom varies with rock and gravel.

List of Permanent positions determined and table of Statistics attached to this report.

Respectfully submitted,

J. M. Coleman

Mate, C. & G. Survey,

Hydrographer.

Approved,

R. B. Stewart

Asst., Comdg *Ch. Seanev*

Chief of Party.

3212

LIST OF PERMANENT POSITIONS ON HYDROGRAPHIC SHEET

NO. 4. WRANGELL STRAITS.

S.E. ALASKA.

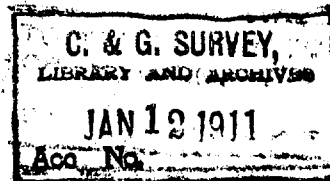
Object	Lat.	D.M.	Long.	D.P.	Height	Remarks.
Jud.	56° 41'	1084	132° 56'	1010	35 ft.	7 Pile Dolph- in Wrangell Flats.
Red	56 41	770	132 57	397	5 ft.	P.T. Flag, not permanent.
Dor.	56 40	1685	132 56	712	35 ft.	7 Pile Dolph.
Gabe.	56 40	---	132 55	---	40 ft.	Gable of House
Mar.	56 40	32	132 56	36	40 ft.	W. Beacon on N. Green Rocks.
Eld.	56 39	1623	132 55	925	40 ft.	W. Beacon on S. Green Rocks.
Isle	56 39	1084	132 56	11	40 ft.	W. Beacon on False Id. P6.
Vex.	56 39	712	132 55	768	35 ft.	7 Pile Dolph.
Dol	56 38	1743	132 55	248	35 ft.	7 Pile Dolph.

For Permanent Marked Positions on this sheet see List
of Geographic Positions rendered with Triangle Computations
of Wrangell Straits.

Post-office address: 412 Federal Building, Seattle, Wash.

ADDRESS ALL COMMUNICATIONS TO
"SUPERINTENDENT, COAST AND GEODETIC SURVEY,
WASHINGTON, D. C."

3212
Department of Commerce and Labor
COAST AND GEODETIC SURVEY



Washington

Eagle Harbor, Wash.

January 2, 1911.

To the Superintendent,
Coast and Geodetic Survey,
Washington, D. C.

Sir:-

I have the honor to forward in one roll, by registered mail, with their respective titles attached, Hydrographic Sheets No's. 2, 3, and 4, of Wrangell Straits, Alaska. These sheets to be completed in the Office in accordance with authority granted in your letter of November 17th.

On December 30th, I forwarded the eight volumes of Sounding Records covering these three sheets.

In making up the List of Permanent Positions to accompany the Descriptive Report I found a discrepancy in the position of "Vex" and "Dol" on sheet No. 4³²¹² and "Vex" on sheet No. 3. As the records have been forwarded I am unable to replot the sounding lines using these signals and I therefor request that the positions using "Vex" "Dol" "41" and "43" on sheet No. 4 be revised, and the positions using signal "Vex" on sheet No. 3 also be revised before the soundings are put on the sheets.

These signals are common to each steet and were used for the terminal positions of the overlapping lines.

Very respectfully,

(Signed) R. B. Derickson.

Asst., Comdg.

C. G. S. SURVEY
 LIBRARY AND RECORDS
 JAN 19 1911
 Ass. No.

3212

STATISTICS OF SHEET 4.

Date.	Letter	Vol.	Pos.	Sdgs.	Mls.	Boat.
Sept. 26,	x	12	66	400	4.75	Launch 117.
Oct. 1,	a'	12	6	28	.3	" "
Oct. 5,	b'	13	84	376	6.75	" "
Oct. 6,	c'	13	11	52	1.0	" "
Oct. 7,	d'	14	59	331	3.75	" "
Oct. 7,	d'	15	62	312	4.5	" "
Oct. 8,	e'	15	89	544	6.25	" "
Sept. 23,	v	11	60	275	4.5	" "
Sept. 24,	w	11	99	560	9.0	" "
Sept. 26,	x	11	134	604	8.75	" "
TOTAL.			670	3482	49.55	

Soundings shown in feet.

V. E. C.
Feb. 28, 1911.

HYDROGRAPHIC SHEET 3212.

Wrangell Strait, Alaska, Green Point to Woody
Island, by Asst. R. B. Derickson in 1910.

TIDES.

	Tonka ft.	Finger Point ft.
3 feet below mean lower low water, or plane of reference on staff	2.3	1.4
Lowest tide observed " "	2.8	1.0
Highest " " " "	23.8	24.8
Mean range of tide	14.3	14.2

Coast and Geodetic Survey

MAR 1 1911

TIDAL DIVISION.

VEC
Jan. 20, 1912.

Duplicate
HYDROGRAPHIC SHEET 3212.

Wrangell Strait, Alaska, Green Point to Woody
Island, by Asst. R. B. Derickson in 1910.

TIDES.

	Tonka, ft.	Finger Point ft.
3 feet below mean lower low water or plane of reference on staff	2.3	1.4
Lowest tide observed " "	2.8	1.0
Highest " " " "	23.8	24.8
Mean range of tide	14.3	14.2

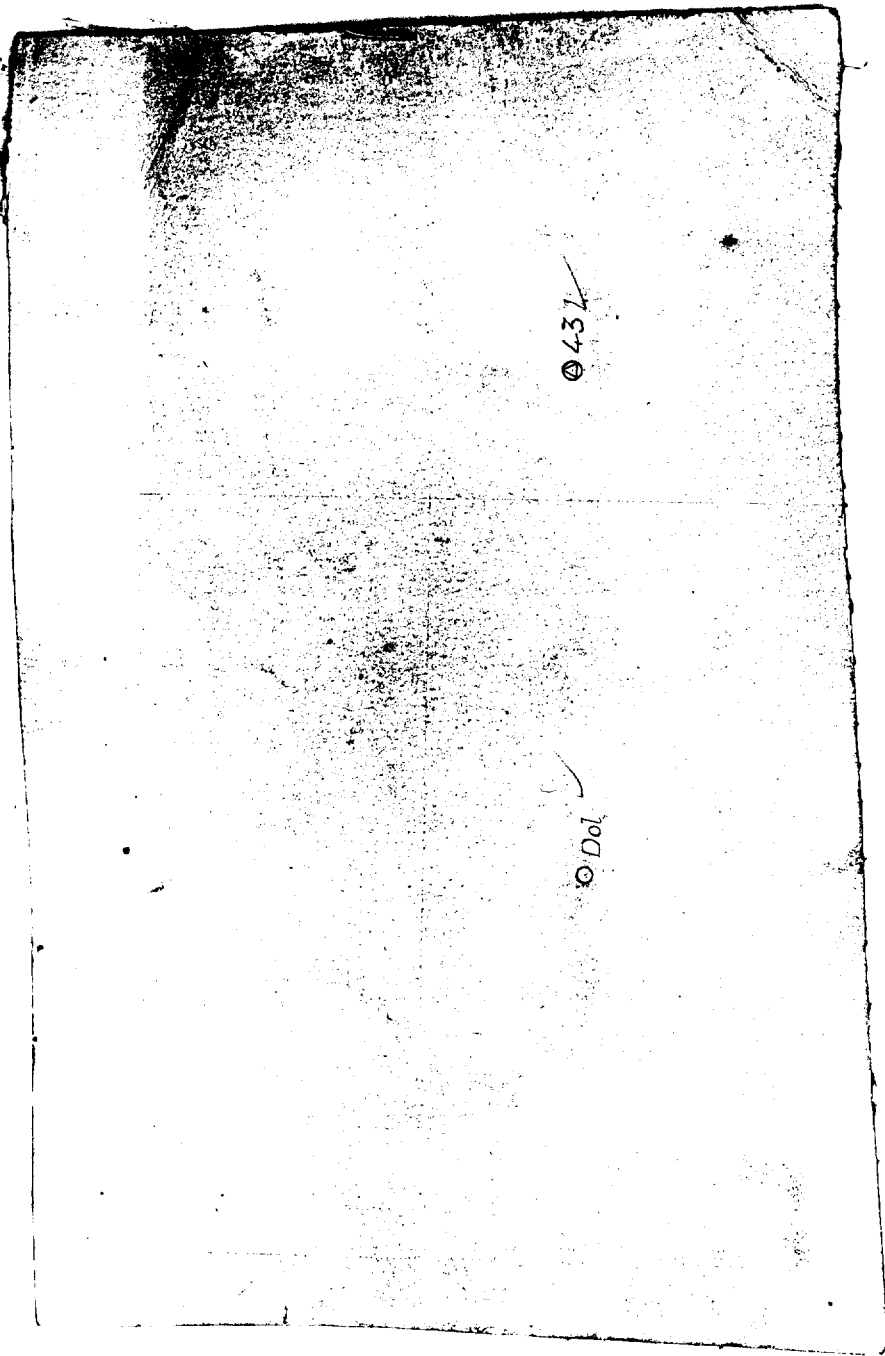
The original note for this sheet was furnished
Feb. 28, 1911. Tidal Division.

Chart and Soundings Survey

JAN 20 1912

TIDAL DIVISION.

3123



431 ✓

Dol ✓

Hyd Sheet No 3212

Apr. 27, 1911.

This survey shows a good development of the ground covered, with the exception of the 12 foot spot, about 150 meters east of $\Delta 36$, which should have been examined.

H. L. Simmons

Verified;

Nov. 21st, 1911.

The sixteen foot spot, between $\Delta 34$ and $\Delta 37$, looks as though it might be an error by the recorder, recording it as one fathom too shoal. There is no grounds upon which it could be rejected however.

Signals "Vex" and "Dol", which were reported in error, were corrected and the hydrography depending upon them also corrected.

The boat sheet was not sent to the office and was therefore not available for use in the verification.

R. L. Johnston