

83
SHA
1911
Q

3318

C. & G. SURVEY.
LIBRARY AND ARCHIVES
JAN 31 1912
Acc. No.

Disq. Ch. Nos. 8502-1 & 8524-1

Department of Commerce and Labor
COAST AND GEODETIC SURVEY

Superintendent.

State: *Alaska*

DESCRIPTIVE REPORT.

Hyd. Sheet No. *3318*

LOCALITY:

*Cook Inlet - West Shore
Harriet Pt. to Chisak
Is.*

1911

CHIEF OF PARTY:

C. J. Gilliam

3318

C. & G. SURVEY
LIBRARY AND RECEIVED
JAN 31 1912
Acc. No.

3318

Sheet.B.

Hyd. 3318

Department of Commerce and Labor

Coast and Geodetic Survey

O.H. Tittmann, Supt.

Hydrography

of

Cook Inlet, Alaska,

From Harriet Point to Chisik Island

by the

party in charge of C.G. Quillian, Asst C. & G.S.

Steamer "McARTHUR",

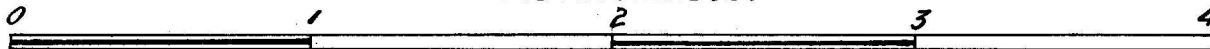
Launch "Delta".

Begun June 21th, 1911.

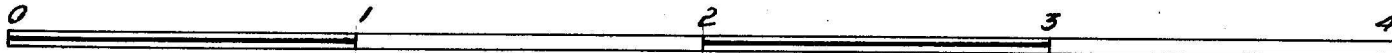
Ended August 5th, 1911.

Scale, $\frac{1}{40000}$.

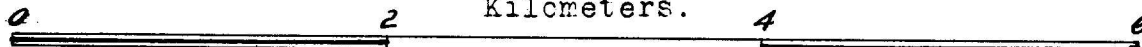
Statute Miles.



Nautical Miles.



Kilometers.



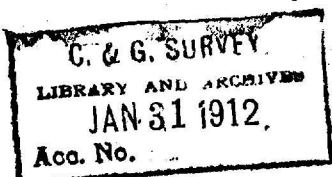
Tide Gauges,

Automatic at Seldovia, Alaska,

Staff Tuxedni Harbor,

Staff Kalgin Island, Party of Asst F.H. Hardy,

*Scale
by O.S.*



3318

Observers.

W.S. Keyes, Mate, in charge, D.X. Shubin, Aid,
L.M. Fisher, Aid.

Recorders.

D.X. Shubin, Aid, L.M. Fisher, Aid,
C.G. Braunlin, Asst Surgeon, H.T. Martin, M at A.

Leadsman.

J. Collins, Sea, T. Agren, Sea, H. Hubner, Sea.

Tide observers.

E.A. McCaleb, Fire 1st class.

Coxswains.

H.T. Martin, M at A, T. Agren, Sea.

3318

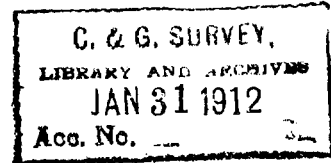
DESCRIPTIVE REPORT

HYDROGRAPHIC

SHEET 3318

HARRIET POINT TO CHISIK ISLAND.

SCALE 1:40 000.



This sheet contains the inshore hydrography of the launch "Delta", executed by a sub-party in charge of Mr. W. S. Keyes, Mate. Unfortunately the records of this sheet and of the 1:20 000 sheet of Tuxedni Harbor and the 1:40 000 sheet Upper Arm of Tuxedni Harbor are confused, and run together in the sounding books.

The following system was used to indicate on which smooth sheet the work was plotted-

Position checked in Red	plotted on Tuxedni Harbor Sheet;
" " " Blue	" " Harriet Point to Chisik Island Sheet;
" " " Green	" " Upper Arm Tuxedni Harbor.

Work extends offshore to the 10 fathom curve where it deepens rapidly to about 20 fathoms.

Harriet Point should not be approached nearer than one mile, as there are a number of glacial boulders around the point, and doubtless some dangerous boulders lie in what appears to be good water. The same warning applies to all parts of this shore line.

Reports by the fishermen at the fish trap just north of

2

Redoubt Point were that no boulders bared near the trap. However, at this place the beach is covered with large boulders, so that landing in rough weather is impossible.

A large rock which bares lies some distance off @ Wood, and a sand shoal which bares at lowest tides is near the rock.

ANCHORAGES.

Good shelter in Southerly winds may be had under Harriet Point on N. side, which is not shown on this sheet. Anchorage may be had in nice weather between A Redoubt and the fish trap in about 5 to 6 fathoms, sandy bottom. This anchorage is uncomfortable in any other than off-shore breezes. Vessels should seek shelter in Tuxedni Harbor or behind Harriet Point.

CURRENTS.

The currents are very swift at Harriet Point, exceeding 5 miles per hour on the spring tides, and with strong southerly breezes bad tidal rips form between Harriet Point and Kalgin Island, and extend some distance southward.

STREAMS.

There are no navigable streams along this coast. At @ Wood a large stream drains, and it can be entered at high water by

light draft boats, say 3 or 4 feet. I do not think boats can go more than a mile up the stream. The same is true of the stream at © Indian and near © Spruce. At low water the flats bare from 1/2 to a mile off-shore at the river mouths.

The sheet itself furnishes nearly all necessary information.

Respectfully submitted
L. G. Quillian,

*Anchorage
Storage to Redoubt Bay*

GEOGRAPHIC POSITIONS

Revised 6-8-48

*V, 5
Accession No. of Computation: G. 11111
North American 1927 Datum, Second-Third - order Triangulation. State A 13283*

STATION	LATITUDE AND LONGITUDE	SCOPES IN SERIES	AZIMUTH	BACK AZIMUTH	TO STATION	HEIGHT (METERS)	DISTANCE (METERS)	FILE
Kasliof, 1908. r. 1910 Elev. 127 m. 22 ft	60 21 56.479 151 22 28.471	17480 43	30 51.74 30 59.85	332 11 331 29	Kustajan East Foreland	46498667 45769733	44454655 3933473	1465045 1271069
East Kalgin, 1908. r. 1911 PL 1944 Elev. 125 m. 21 ft	60 29 08.788 151 50 03.426	7720 52	43 09.39 45 08.82	9 47 32	Kustajan East Foreland	44242127 45454317	2655906 3511007	871358 1151903
3318 Harriet, 1908. r. 1944 Elev. 127 m. 24 ft	60 23 27.453 152 16 08.558	8497 131	26 21.60 51 41.56	37 53 52 36	Kustajan East Foreland	46666223 4774066	4641151 5989721	1522672 1965128
3322 Butte, 1908. r. 1944 Elev. 122 m. 40 ft	60 40 24.954 152 10 38.929	7724 591	05 19.89 38 40.86	77 27 83 19	Kustajan East Foreland	43769159 4628000	2381858 1424619	781448 1393106
North Kalgin, 1908. r. 1944 Elev. 125 m. 24 ft	60 30 32.402 151 56 48.344	10153 676	53 39 45 22	16.97 15.40	Harriet Butte	43451702 43483204	2213968 2223008	726364 737652
Kalgin, 1944	60 21 30.945 152 03 59.607	9577 914	58 39.65 11 59	28.7 84.55	Harriet Butte	44124092 45771443	2258495 3776981	847995 1234165
			58 08.44 58 05.07	11.3 21	East Kalgin North Kalgin	43228385 40696187	665026 1173866	218184 385126
			170 11 201 36	06 42	East Kalgin North Kalgin	45517373 42563368	3562356 1804417	1169750 591949

Abbreviations used: d - described; m - measured; s - sketch; r - re-measured; l - lost; p - probably. (Continuation of G. 11111 - probably lost)

MDH
APR. 8, 1912.

HYDROGRAPHIC SHEET NO. 3316.

Cook Inlet, vicinity of Tuxedni Harbor, Alaska,
by Asst. C. G. Quillian, in 1911.

TIDES

	Tuxedni Harbor
	ft.
Mean lower low water, or plane of reference on staff	5.1
Lowest tide observed	0.9
Highest tide observed	25.4
Mean range of tide	14.0

Coast and Geodetic Survey
APR 8 1912
TIDAL DIVISION

Hyd Sheet No. 3318

Apr. 18, 1912.

The work over this area appears to be very good.

The instructions for hydrographic work state that the sounding records shall be kept separate for each sheet. The records, from which this work is plotted, are those different sheets.

H. L. Simms

Verified by J. D. Torrey