

8714

Diag. Cht. No. 1001-3.

Form 504

U. S. COAST AND GEODETIC SURVEY

DEPARTMENT OF COMMERCE

DESCRIPTIVE REPORT

Type of Survey HYDROGRAPHIC

Field No. TA-0.003 Office No. H-8714

LOCALITY

State FLORIDA

General locality ATLANTIC OCEAN

Locality EAST OF CAPE CANAVERAL

1962

CHIEF OF PARTY

H.W. GEHMAN

LIBRARY & ARCHIVES

DATE

JUN 18 1963

071128

DEPARTMENT OF COMMERCE  
U. S. COAST AND GEODETIC SURVEY

HYDROGRAPHIC TITLE SHEET

The Hydrographic Sheet should be accompanied by this form, filled in as completely as possible, when the sheet is forwarded to the Office.

REGISTER No. H-8714

Field No. TA-0.003

State FLORIDA

General locality ATLANTIC OCEAN

Locality EAST OF CAPE CANAVERAL

Scale 1:100,000 Date of survey 20 Feb. to 12 May 1962

Instructions dated 13 Feb. 1962

Vessel USS TANNER (AGS-15), NAVAL OCEANOGRAPHIC OFFICE

Chief of party H.W. GEHMAN

Surveyed by SHIP PERSONNEL

Soundings taken by ~~fathometer~~ graphic recorder, handhead, ~~with~~ PDR & AN/UQN-1C

Fathograms scaled by SHIP PERSONNEL

Fathograms checked by SHIP PERSONNEL & NORFOLK PROCESSING OFFICE

Protracted by SHIP PERSONNEL

Soundings penciled by A.G. ATWILL (Norfolk Processing Office)

Soundings in fathoms ~~xxx~~ at MLW ~~XXXXX~~

REMARKS:  
.....  
.....  
.....  
.....  
.....

WRS

NORFOLK PROCESSING OFFICE  
ADDENDUM  
To Accompany

HYDROGRAPHIC SURVEYS H-8713 (Ta-0.002) and H-8714 (Ta-0.003)

GENERAL

These surveys were executed by U.S. Naval Oceanographic Office Ship Tanner (AGS-15). Recording methods and some other operational procedures are different from those used by the C&GS and in order to avoid confusion most of these methods were retained.

These are adjoining <sup>surveys</sup> which make a butt junction. Most of the sounding lines overlap both sheets, using common record books and continuous position numbers whose colors vary from day to day.

When received at this office most of the position had been plotted on the smooth sheets. Personnel of this office rescaled all of the fathograms, compiled and entered the corrections, reduced all soundings and entered them on the sheets.

SOUNDINGS

Approximately 90% of the soundings were obtained with a Precision Depth Recorder and the remainder with an AN/UQN-1C fathometer. Both of these fathometers were designed for use in depths greater than some found on the West side of these surveys, however, taking this factor into consideration, agreement of soundings is considered good.

Soundings were plotted to the nearest  $\frac{1}{2}$  fathom in depths less than 101 fathoms in order to make junction with 1200 series charts near the southern end of the area, and to give a better delineation of depth curves in the very smooth bottom found at these depths. In depths over 101 fathoms soundings were plotted to the even two fathoms.

SOUNDING CORRECTIONS

Velocity corrections from temperature and salinity observations, as compiled in Washington Office, were applied to all soundings. A mean draft correction of  $\frac{1}{2}$  2.0 fathoms was used in compliance with the enclosed letter from Chief, Nautical Chart Division, dated Mar. 27, 1963, 8330mts. Tide corrections were not applied as the range is insignificant in the area and depth sounded.

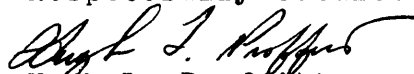
con't.

PROCESSING NOTES  
H-8714

With the exception of the discrepancies listed below, soundings are in good agreement on this survey.

- (1) The two bottom crosslines, comprising positions 1 thru 111BS and 61 thru 109BR, are in disagreement by two to four fathoms with the main scheme. This appears to have been caused by position displacement as depth curves <sup>form</sup> a normal pattern in the smooth bottom area at the West side of the survey when curves are drawn to conform to the main scheme of lines. *May be caused by crossline edge too.*
- (2) Lat. 28-37' and Long. 79-41' -- There is an unaccountable jump of 9 fathoms on position 137BB when changing from the EDO to the PDR, however, soundings on both sides of the change are in agreement with crosslines and surrounding hydrography. *For 119 to 137 BB appears to be a jump*
- (3) A 15% fathometer time correction was applied to the PDR soundings between positions 118 thru 128AN and 1 thru 72AP.
- (4) A -10 fathom correction was applied to EDO soundings between positions 145 thru 164BB, and a -15 fathom correction was applied to EDO soundings between positions 61 thru 118BC, 161 thru 163BC and 189 thru 203BC to bring them into agreement with surrounding hydrography. These corrections were applied on the basis of the statement in paragraph 3-80 of the Manual that dirty contact points in the keying assembly can cause errors of several fathoms in the recorded soundings.

Respectfully submitted,

  
Hugh L. Proffitt  
Cartographer

Norfolk, Va.  
12 June 1963

VELOCITY CORRECTIONS FOR USS TANNER SURVEYS - EAST COAST FLORIDA

TABLE 1, WEST OF LONG. 79-30'

∕	0.1 Fm.	to	4.0 Fm.
	0.2	"	7.0
	0.3	"	9.0
	0.4	"	11.0
	0.5	"	15.0
	0.7	"	19.0
	0.9	"	23.0
	1.1	"	27.0
	1.3	"	31.0
	1.5	"	35.0
	1.7	"	40.0
	1.9	"	44.0
	2.1	"	48.0
	2.3	"	52.0
	2.5	"	57.0
	2.7	"	61.0
	2.9	"	66.0
	3.1	"	71.0
	3.3	"	76.0
	3.5	"	80.0
	3.7	"	86.0
	3.9	"	91.0
	4.1	"	96.0
	4.3	"	101.0
	4.6	"	113.0
	5.0	"	128.0
	5.5	"	145.0
	6.0	"	164.0
	6.7	"	226.0
	8.0	"	280.0
	9.0	"	340.0
	10.0	"	410.0

TABLE 2, EAST OF LONG. 79-30'

∕	0.1 Fm.	to	5.0 Fm.
	0.2	"	7.0
	0.3	"	9.0
	0.4	"	11.0
	0.5	"	13.0
	0.6	"	17.0
	0.8	"	21.0
	1.0	"	25.0
	1.2	"	29.0
	1.4	"	33.0
	1.6	"	37.0
	1.8	"	41.0
	2.0	"	45.0
	2.2	"	49.0
	2.4	"	54.0
	2.6	"	59.0
	2.8	"	62.0
	3.0	"	66.0
	3.2	"	70.0
	3.4	"	75.0
	3.6	"	79.0
	3.8	"	84.0
	4.0	"	88.0
	4.2	"	92.0
	4.4	"	97.0
	4.6	"	102.0
	4.9	"	115.0
	5.5	"	128.0
	6.0	"	141.0
	6.5	"	154.0
	7.0	"	177.0
	8.0	"	207.0
	9.0	"	241.0
	10.0	"	282.0
	11.0	"	326.0
	12.0	"	373.0
	13.0	"	424.0
	14.0	"	480.0

Compiled in Wash. Office

NOTE: See accompanying sheet <sup>of</sup> tabulated corrections for entry in sounding volumes.

UNITED STATES GOVERNMENT

U.S. DEPARTMENT OF COMMERCE  
COAST AND GEODETIC SURVEY

# Memorandum

8330:mts

TO : Norfolk District Officer  
Attn: Mr. H. L. Proffitt

DATE: March 27, 1963

FROM : Chief, Nautical Chart Division

SUBJECT: Transducer depth for ship TANNER

The depth-recorder transducer depth for the Navy ship TANNER on surveys off Florida is reported by the U. S. Naval Oceanographic Office to be 13 feet.

It is requested that the military grid tick marks be inked in black so that the copies to be furnished the Navy will show these.

Prints of the boat sheets used on these surveys will be forwarded soon.

*Marvin T. Paulson*  
Marvin T. Paulson

FINAL VELOCITY CORRECTIONS FOR USS TANNER SURVEYS - EAST COAST FLA.

TABLE 1, WEST OF LONG. 79-30'

✓	0.0 FM.	to	11.0 FM.
	0.5	"	23.0
	1.0	"	32.0
	1.5	"	43.0
	2.0	"	53.0
	2.5	"	65.0
	3.0	"	77.0
	3.5	"	90.0
	4.0	"	118.0
	5.0	"	153.0
	6.0	"	228.0
	7.0	"	271.0
	8.0	"	324.0
	9.0	"	392.0
	10.0	"	End

TABLE 2, EAST OF LONG. 79-30'

✓	0.0	To	11.0 FM.
	0.5	"	22.0
	1.0	"	32.0
	1.5	"	42.0
	2.0	"	53.0
	2.5	"	63.0
	3.0	"	74.0
	3.5	"	85.0
	4.0	"	96.0
	4.5	"	101.0
	4.0	Fm. 102.0 to	108 Fm.
	5.0	"	134.0
	6.0	"	163.0
	7.0	"	199.0
	8.0	"	233.0
	9.0	"	273.0
	10.0	"	314.0
	11.0	"	361.0
	12.0	"	412.0
	13.0	"	466.0
	14.0	"	End.

Compiled by Norfolk Office

NORFOLK PROCESSING OFFICE  
INDEX OF RECORDS

SURVEY H-8714 (Ta-0.003) - PROJECT H-6

<u>DATE</u>	<u>DAYMARK</u>	<u>JOURNAL</u>	<u>POSITIONS</u>
2/21/62	W Br.	2.002	37-125a
2/23/62	Y Gr.	4	1-42
2/24/62	Z Red	5	3a-55
2/26/62	AB Br.	6	2a-61a, 67-129
2/27/62	AC Bl.	7	30-126
2/28/62	AD Gr.	8	54-133
3/ 1/62	AE Red	9	132-160
3/ 2/62	AF Pur.	10	109-140
3/ 8/62	AM Br.	12	71-151
3/ 9/62	AN Bl.	13	1-137, 118a-128
3/10/62	AP Gr.	14	1-72, 176-279
3/11/62	AQ Red	15	1-14, 127-250
3/12/62	AR Pur.	16	97-178, 82-88, 97-178
3/13/62	AS Br.	17	1-149
3/19/62	AY Bl.	18	31-69
3/20/62	AZ Gr.	19	1-37, 125-189
3/21/62	BA Red	20	56-152, 237-284
3/22/62	BB Pur.	21	1-3, 119-164a
3/23/62	BC Br.	22	61-161, 161-203
3/26/62	BF Red	23	1-81
3/27/62	BG Pur.	24	112-212
3/28/62	BH Br.	25	53-136
3/29/62	BJ Bl.	26	35-39, 118-196
3/30/62	BK Gr.	27	9-48, 127-183
4/ 1/62	BM Pur.	29	20-99, 180-253
4/ 2/62	BN Br.	30	47-121, 202-269
4/ 3/62	BP Bl.	31	1-10, 116-186
4/ 4/62	BQ Gr.	32	15-88, 167-245
4/ 5/62	BR Red	33	50-109
4/ 6/62	BS Pur.	34	1-111
4/ 7/62	BT Br.	35	1-147, 238-275 (Fathogram missing Pos. 53-72BT)
4/ 8/62	BU Bl.	36	1-44, 138-149, 222-257
4/ 9/62	CC Pur.	37	35-75
4/10/62	CD Br.	38	1-35, 110-122, 161-227
4/11/62	CE Bl.	39	1-23, 102-174, 247-272
4/12/62	CF Gr.	40	1-146





U. S. NAVAL OCEANOGRAPHIC OFFICE  
WASHINGTON 25, D.C.

Code 3511/PAB:pb  
Serial 2217

MAR 11 1963

From: Commander, U.S. Naval Oceanographic Office  
To: Director, Coast and Geodetic Survey

Subj: Survey Records; forwarding of

Ref: (a) NAVOCRANO ltr ser 2030 of 13 Feb 1962

Encl: (1) Copy of Final Report of the Hydrographic Survey of East  
Coast of Florida  
(2) Index of Survey Records  
(3) Transmittal and Transfer Record of 8 March 1963

1. The U.S. Naval Oceanographic Office conducted Hydrographic Survey operations off the east coast of Florida during February-May 1962 (reference (a)). Enclosures (1) and (2) are forwarded for your information and retention. Enclosure (3) lists field records and smooth sheets which are being forwarded under separate cover. Smooth sheets have been processed through the plotting of boat positions.

2. This Office would appreciate the return of the original field records along with a stable base copy of your completed smooth sheets.

J. L. [unclear]  
By direction

# EAST COAST FLORIDA SURVEY

- FINAL REPORT -

CONDUCTED BY  
USS TANNER (AGS-15)  
FEBRUARY - MAY 1962

PROJECT H-6

ARCHIVE NUMBER B-30201

22/7

ENCL (1)

U.S.S. TANNER (AGS-15)  
UNITED STATES ATLANTIC FLEET  
CARE OF FLEET POST OFFICE  
NEW YORK, NEW YORK

In reply refer to:

AGS15/HWG:rbw  
3160  
Ser: 260  
24 May 1962

From: Commanding Officer, U.S.S. TANNER (AGS-15)  
To: Hydrographer  
Via: Commander Service Force, U.S. Atlantic Fleet (SPSGRU-70)  
Subj: Survey Operations off the East Coast, Florida; report of  
Ref: (a) Specifications, U.S. Navy Survey, off the East Coast  
of Florida, Project H-6, (1962 Season)  
Encl: (1) Subject report

1. In accordance with reference (a), ten copies of subject report are submitted herewith as enclosure (1).

/s/ H. W. Gehman  
H. W. GEHMAN

Copy to:  
CNO (OP-33, 61, 92) (w/c encl (1))  
CINCLANTFLT (w/c encl (1))  
COMSERVLANT (w/c encl (1))  
CO AFMTC PAFB (w/c encl (1))  
CO NOTU PAFB (w/c encl (1))  
CO USS MAURY (AGS-16) (w/c encl (1))  
CO HU-4 (w/c encl (1))

TABLE OF CONTENTS

SECTION	TITLE	PAGE
I	Narrative	1
II	Hydrography	2
III	Positioning	2
IV	Equipment performance Positioning Echo Sounding	2
V	Helicopter Operations	3
VI	Weather and Sea Conditions	3
Plate I	Progress Chart	

SECTION I

NARRATIVE

The specifications for the Hydrographic Survey off the East Coast Florida were contained in Hydrographer's letter serial 2030 of 13 February 1962, and scheduled for accomplishment for February through May 1962.

TANNER arrived in the Survey area 19 February and commenced calibration of Lorac receivers. Initial calibration was obtained over the INDIALANTIC HOTEL and transferred to Buoy 10 off Bethel Shoal. Sounding operations were commenced on 20 February and continued through 21 February. Both inner baseline extensions were crossed on 22 February and calibration transferred to Memory Rock, in the Bahama Bank. The following day the Green outer baseline extension was crossed and observations made over several points along the Florida Coast. Sounding operations were resumed the same day and continued through 2 March with two brief interruptions due to Lorac transmitter failures.

TANNER departed the survey area the evening of 2 March and arrived in Mayport, Florida, for fuel on 3 March. The ship arrived back in the survey area on 6 March. Sounding operations could not be resumed until 7 March however due to Lorac equipment damage on Carter Cay as a result of heavy weather. Sounding work was discontinued late 13 March until 19 March. During this period TANNER visited Fort Lauderdale, Florida for fuel and upkeep.

Sounding operations were resumed 19 March and continued through 22 March. The period 23 through 25 March was devoted to a special investigation of a shoal off Mayport. This investigation was directed by COMSERVLANT message 162346Z (MAR), and reported separately.

Work in the survey area was resumed on 26 March and continued through 8 April at which time TANNER departed for New York after a brief fuel stop at Mayport.

TANNER returned to the survey area 9 May having completed the scheduled inport period in New York, 11-30 April, and another special survey near Key West (reported separately), 4-8 May.

The first day in the survey area was devoted to crossing both inner baseline extensions and calibrating Memory Rock and Matanilla Shoal buoy. Sounding operations were commenced the afternoon of 9 May and continued until the survey was terminated unexpectedly on the afternoon of 12 May by order of COMSERVLANT in order to make the ship available for another special survey of a higher priority of interest.

While TANNER was in the survey area, NOTU, Patrick AFB, was very helpful in coordinating Lorac net activities and assisting with helicopter trips for mail and other logistic matters. Appreciation for these services was expressed officially by the Commanding Officer, USS TANNER.

Smooth plotting was completed prior to TANNER's return to New York.

## SECTION II

### HYDROGRAPHY

Plate one shows the progress made by TANNER through 12 May when the survey ended.

The unforeseen termination of the survey did not allow completing the boat sheets which were being worked on. An examination of these sheets will disclose some holidays which could not be run in the time available.

A total of 6953 miles of an estimated 8400 miles on Boat Sheets 2 and 3 have been completed. Additional work is required in the Florida Straits to complete the specified boat sheets.

No dangers to navigation were discovered which are presently not charted. Comparison of the soundings taken with existing charts of the area indicate no significant differences.

A cursory review of navigational data obtained indicated that the main axis of the Gulf Stream was 5 to 7 miles west of the approximate axis as shown on C&GS chart 1117.

## SECTION III

### POSITIONING

The established Atlantic Missile Range Lorac "B" net with stations on Carter Cay, Northwest Grand Bahama Island and Jupiter, Florida, was employed for position control. TANNER'S Lorac "A" type receivers were modified by the Lorac field engineer aboard prior to arrival in the survey area. The net was on the air from only 0730 to 2330 each day from TANNER's arrival until 2 March when TANNER departed the area. After 6 March 24 hour Lorac service was provided. Transmitters were attended 8 hours per day.

Due to the lack of convenient calibration points. Considerable time was required to effect calibration. The use of lane identifying equipment could have been used to advantage during the survey.

Calibration readings of various geographic points in the area were reported in TANNER letter serial 115 dated 20 March 1962.

## SECTION IV

### EQUIPMENT PERFORMANCE

#### Positioning Equipment:

a. The performance of the Lorac positioning equipment was satisfactory. A Seismograph Service Corporation Field Engineer was assigned to the TANNER during the survey.

b. Lorac receivers aboard operated without any breakdowns.

c. The helicopter Lorac receiver (AN/SRN-2) failed during the initial stage of the survey operation. NOTU, Patrick AFB was able to obtain the required parts on short notice and no additional trouble was encountered. A spare AN/SRN-2 was received from Commander Service Force during the 3-5 March Mayport visit.

Sounding Equipment:

a. The PDR was used throughout the survey. It operated well and required only minor repair and adjustment. The AN/UQN-1C was used during PDR maintenance periods.

SECTION V

HELICOPTER OPERATIONS

The HRS helicopter detachment provided by HU-4 was used primarily for calibration, logistic and training flights. Down time for the aircraft was of a routine nature and never interfered with flight requirements. The personnel of the air detachment were very effective in making repairs and adjustments and keeping the helicopter operational.

The detachment conducted 105 flights, a total of 89.5 hours.

SECTION VI

WEATHER

The weather conditions were not particularly good. During the first half of March strong winds and resulting sea conditions required reduction of ships speed from time to time. During 6 March Lorac equipment at Carter Cay was damaged by heavy weather causing a 24 hour delay in survey operations.

INDEX OF RECORDS

1/2

Archive number: 306164

Spring 1962

Project H-6

Southeast Coast of Florida

U.S.S. TANNER

DATE Daymark	JOURNAL NO.	S.S. 0.002	S.S. 0.003	REMARKS
20 Feb. v-purple	2.001	1-72	none	
21 Feb. w-brown	2.002	1-33, 123-165	37-124a	
22 Feb. x-blue	2.003	1-30	none	
23 Feb. y-green	2.004	none	1-42	
24 Feb. z-red	2.005	55-160	3a-56	
26 Feb. ab-brown	2.006	1-30, 131-177	29-134	
27 Feb. ic-blue	2.007	1-31, 126-146	29a-126	
28 Feb. ad-green	2.008	1-54	54-133	
1 March ae-red	2.009	1-132	132-160	
2 March af-purple	2.010	1-110	109-140	
7 March al-purple	2.011	1-60	none	
8 March am-brown	2.012	61-72	71-151	
9 March an-blue	2.013	36-119	1-37, 118a-128	
10 March ap-green	2.014	71-156, 156-177	1-72, 176-279	
11 March aq-red	2.015	14-127	1-14, 127-250	
12 March ar-purple	2.016	88a-96	97-178	
13 March as-brown	2.017	148-195	1-149	
19 March ay-blue	2.018	1-31	31-69	
20 March az-green	2.019	37-125, 189-222	1-37, 125-159, 159a-189	
21 March ba-red	2.020	1-56, 153-257	56-152, 257-264	
22 March bb-purple	2.021	3-87, 165-184	1-3, 119-169a	
23 March bc-brown	2.022	1-62	61-161, 162-203	
26 March bi-red	2.023	none	1-81	
27 March bg-purple	2.024	1-112, 212-258	112-160	2
28 March bh-brown	2.025	1-55, 156-182 182	55-136	2217

ENCL (2)



INDEX OF RECORDS

Archive number: 300104

Spring 1962

Project H-0

Southeast coast of Florida

U.S.S. TANNER

Date Daymark	JOURNAL NO.	S.S. 0.002	S.S. 0.003	REMARKS
29 March dj-blue	2.026	1-35, 40-118, 195-207	35-39, 118-195	
30 March bk-green	2.027	1-9, 48-127, 183-220	9-48, 127-183	
31 March bi-red	2.028	1-130		
1 April om-purple	2.029	1-20, 99-181, 252-295	20-99, 180-253	
2 April bn-brown	2.030	1-47, 121-202	47-121, 202-269	
3 April bp-blue	2.031	9-116, 186-248	1-9, 116-186	
4 April bq-green	2.032	1-15, 88-167, 245-284	15-88, 167-245	
5 April br-red	2.033	1-50	50-109	61-109 using UQN, poor agreement with PDR
6 April bs-purple	2.034	none	1-111	31-38, 50-70, 71-91 On UQN does not provide good check with PDR
7 April bt-brown	2.035	148-237	1-147, 238-275	UQN with 53-72 missing
8 April bu-blue	2.036	45-137, 138-222	1-44, 138-149, 222-257	
9 May cc-purple	2.037	35-74	1-35	
10 May d brown	2.038	35-110, 122-161	1-35, 110-122, 161-227	
11 May ce blue	2.039	22-102, 174-247	1-22, 102-174, 247-272	
12 May cf green	2.040		1-158	

SECURED SURVEY FLORIDA , SOUTHEAST COAST

*Norton S. Remmer*

Norton S. Remmer  
May 22, 1962



Hydrographic Surveys (Chart Division)

HYDROGRAPHIC SURVEY NO. ...8714...

Records accompanying survey: Smooth sheets ...<sup>1</sup>...;  
 boat sheets ...<sup>1</sup>...; sounding vols. ....; wire drag vols. ....;  
 Descriptive Reports ...<sup>1</sup>...; graphic recorder envelopes ....;  
 special reports, etc. 8-Boxes containing Sounding Journals;  
 Echo Sounder Rolls and Brush Oscillograph Rolls.

The following statistics will be submitted with the cartographer's report on the sheet:

Number of positions on sheet	.....
Number of positions checked	.....
Number of positions revised	.....
Number of soundings revised (refers to depth only)	.....
Number of soundings erroneously spaced	.....
Number of signals erroneously plotted or transferred	.....
Topographic details	Time .....
Junctions	Time .....
Verification of soundings from graphic record	Time .....
Special adjustments	Time .....

Verification by ..... Total time ..... Date .....

Reviewed by ..... Time ..... Date .....

VERIFIER'S REPORT OF HYDROGRAPHIC SURVEY NO. H-8714

The verifier should deal with the present hydrographic survey only, as the reviewer considers its relation to previous surveys and published charts. He should be thoroughly familiar with Chapters 3, 7 and 9 of the Hydrographic Manual.

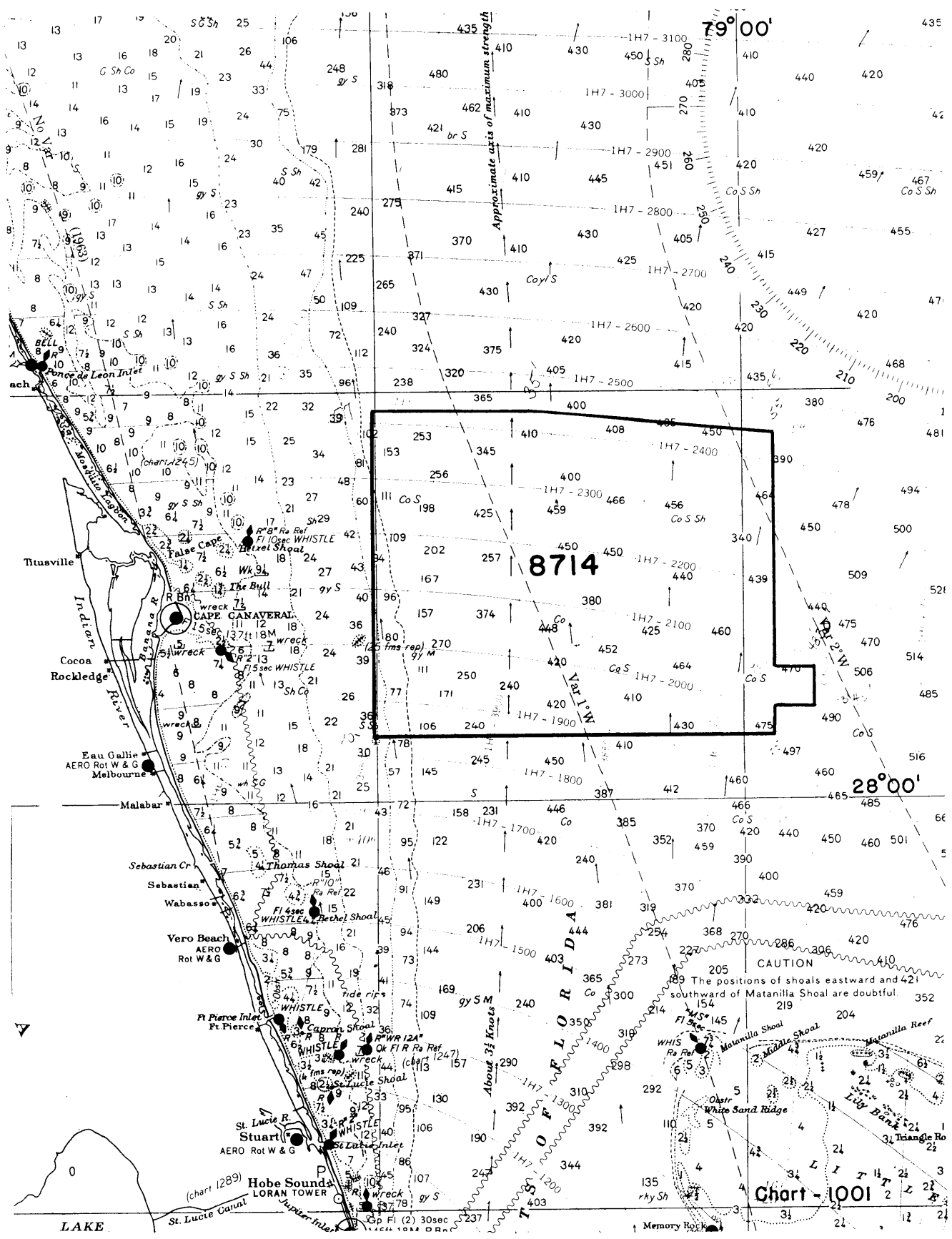
1. The descriptive report was consulted and appropriate notes were made in soft pencil regarding action taken.
2. Soundings originating with the survey and mentioned in the descriptive report have been verified, including latitude and longitude.
3. All reference to survey sheets mentioned in the descriptive report include the registry number and year.
4. Geographic names of hydrographic features if on sheet are in slanting lettering and of topographic features in vertical lettering.
5. All items affecting the plotting of the survey which are entered in the remarks columns of the sounding records were noted and check marked. In all cases appropriate action was taken.
6. All positions verified instrumentally were check marked in the sounding records.
7. All critical soundings are clear and legible and are a little larger than the adjacent soundings.
8. The metal protractor has been checked within the last three months.
9. The protracting and plotting of all bad crossings were verified.
10. All detached positions locating critical soundings, rocks or buoys were verified.
11. The boat sheet was compared with the smooth sheet.

12. The spacing of soundings as recorded in the records was closely followed.
13. The bottom characteristics were shown on outstanding shoals.
14. The reduction and plotting of doubtful soundings were checked.
15. The transfer of contemporary topographic information was carefully examined.
16. All junctions were transferred and overlapping curves made identical.
17. The notation "JOINS H- (19--)" was added in ink for all contemporary adjoining or overlapping sheets now registered. Those not verified are shown in pencil.
18. The depth curves have been inspected before inking.
19. All triangulation stations and transfer of topographic and hydrographic signals were checked.
20. Heights of rocks were checked against range of tide.
21. Rocks transferred from topographic surveys have a dotted curve where shown thereon. Rocks located accurately by hydrographer are encircled by dotted red curve.
22. Unnecessary pencil notes have been removed.
23. Objects on which signals are located and which fall outside of the low water line have been described on the sheet.
24. The low water line and delineation of shoal areas have been properly shown.
25. Degree and minutes values and symbols have been checked.
26. Questionable soundings have been checked on the fathograms

27. Source of shoreline and signals (when not given in report).
28. All notes on sheet are in accordance with figure 171 in the Hydrographic Manual.
29. All aids located, with those on contemporary topographic sheets, have been shown on survey.
30. Depth curves were satisfactory except as follows:
31. Sounding line crossings were satisfactory except as follows:
32. Junctions with contemporary surveys were satisfactory except as follows:
33. Condition of sounding records was satisfactory except as follows:
34. The protracting was satisfactory except as follows:
35. The field plotting of soundings was satisfactory except as follows:
36. Notes to reviewer: .  
:

Verified by

Date



Approximate axis of maximum strength

79°00'

28°00'

FLORIDA

Chart - 1001

LAKE

Memory Book

RECORD OF APPLICATION TO CHARTS

FILE WITH DESCRIPTIVE REPORT OF SURVEY NO. H-8714

INSTRUCTIONS

A basic hydrographic or topographic survey supersedes all information of like nature on the uncorrected chart.

1. Letter all information.
2. In "Remarks" column cross out words that do not apply.
3. Give reasons for deviations, if any, from recommendations made under "Comparison with Charts" in the Review.

CHART	DATE	CARTOGRAPHER	REMARKS
			<i>Adequately before</i> <del>Full Part</del> Before After Verification Review Inspection Signed Via
11480	5-20-80	<i>Allen Dept</i>	Drawing No. <i>32 Adequately</i>
			<i>ADEQUATE</i>
11460	12-27-82	<i>Joe Turner</i>	<del>Full Part</del> Before After Verification Review Inspection Signed Via
			Drawing No.
<del>411</del>	<del>4-8-92</del>	<del><i>Ken Foster</i></del>	
411	4-8-92	<i>Ken Foster</i>	Full Part Before After Verification Review Inspection Signed Via
			Drawing No. <i>Adequately Applied - Cat I.</i>
			Full Part Before After Verification Review Inspection Signed Via
			Drawing No.
			Full Part Before After Verification Review Inspection Signed Via
			Drawing No.
			Full Part Before After Verification Review Inspection Signed Via
			Drawing No.
			Full Part Before After Verification Review Inspection Signed Via
			Drawing No.
			Full Part Before After Verification Review Inspection Signed Via
			Drawing No.
			Full Part Before After Verification Review Inspection Signed Via
			Drawing No.
			Full Part Before After Verification Review Inspection Signed Via
			Drawing No.
			Full Part Before After Verification Review Inspection Signed Via
			Drawing No.
			Full Part Before After Verification Review Inspection Signed Via
			Drawing No.
			Full Part Before After Verification Review Inspection Signed Via
			Drawing No.
			Full Part Before After Verification Review Inspection Signed Via
			Drawing No.
			Full Part Before After Verification Review Inspection Signed Via
			Drawing No.
			Full Part Before After Verification Review Inspection Signed Via
			Drawing No.
			Full Part Before After Verification Review Inspection Signed Via
			Drawing No.
			Full Part Before After Verification Review Inspection Signed Via
			Drawing No.
			Full Part Before After Verification Review Inspection Signed Via
			Drawing No.
			Full Part Before After Verification Review Inspection Signed Via
			Drawing No.
			Full Part Before After Verification Review Inspection Signed Via
			Drawing No.
			Full Part Before After Verification Review Inspection Signed Via
			Drawing No.
			Full Part Before After Verification Review Inspection Signed Via
			Drawing No.
			Full Part Before After Verification Review Inspection Signed Via
			Drawing No.
			Full Part Before After Verification Review Inspection Signed Via
			Drawing No.
			Full Part Before After Verification Review Inspection Signed Via
			Drawing No.



Chart 1112 (11460) 7/30/63 John P. Wein Part. applied before verification  
and review  
" 1111 (11480) 8/19/63 J.H. EATON Part app'd. before V. & R.  
Chart 1007 (111) 8/20/63 John P. Wein Part. applied before V. & R. thru  
(11609)  
1001/12-3-63 O. Svendsen Chart 1112 drawing #23 + Chart 1111 drawing #16  
Part. app. thru Chart 1111 Dwg #16 -- Before verif & review