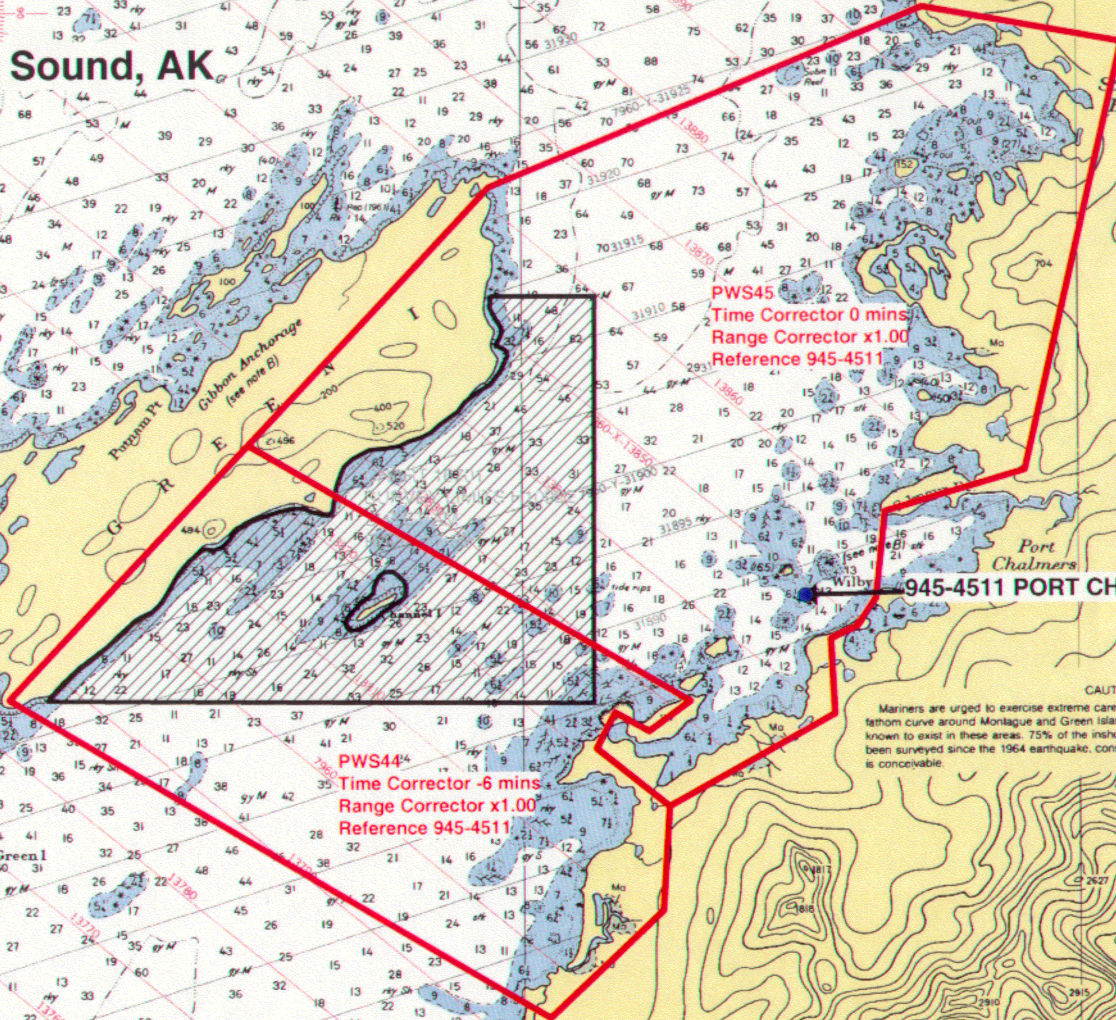


Final Tidal Zoning for OPR-P139-RA-99 Southwest Prince William Sound, AK Sheet H-10922



PWS45
Time Corrector 0 mins
Range Corrector x1.00
Reference 945-4511

PWS44
Time Corrector -6 mins
Range Corrector x1.00
Reference 945-4511

CAUTION
Mariners are urged to exercise extreme care while transiting the waters adjacent to the tatham curve around Montlake and Green Islands. Numerous uncharted rocks and islets known to exist in these areas. 75% of the inshore waters surrounding these islands have been surveyed since the 1964 earthquake, consequently the presence of underwater damage is conceivable.

945-4511 PORT CHALMERS