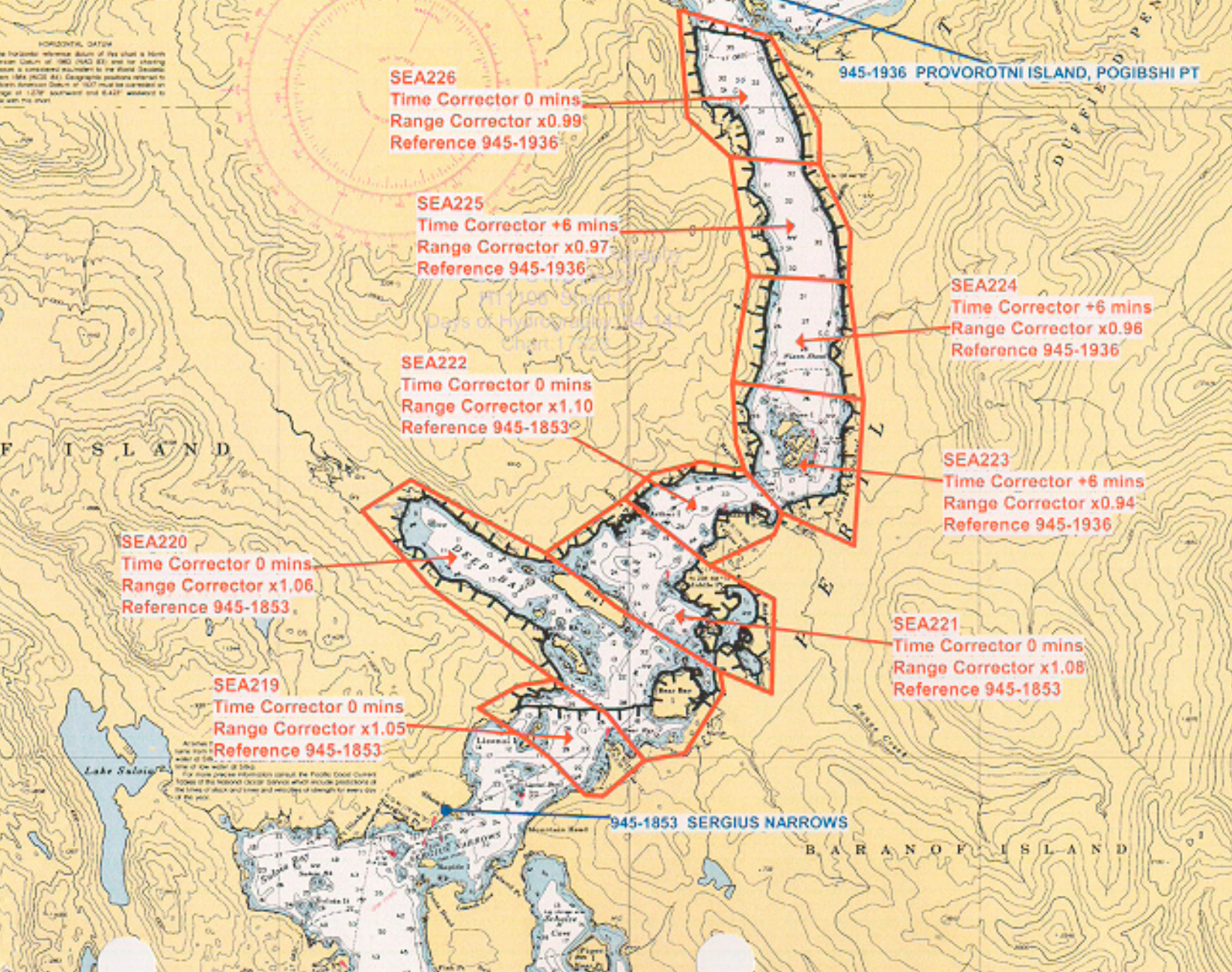


Final Tide Zoning for OPR-O112-RA-2002

Sheet H11108 Sitka, AK

HORIZONTAL DATUM
The horizontal reference datum of this sheet is North American Datum of 1983 (NAD 83) and for charting purposes is considered equivalent to the World Geodetic System 1984 (WGS 84). Geographic positions referred to a North American Datum of 1983 must be corrected an average of 1.22" (northward and 0.42" westward) to give them this sheet.



Lake Salween
All depths here shown are water of 5000 feet or less.
For more precise information consult the Pacific Coast Current Tables of the National Ocean Service which include positions of the lines of slack and flood and velocities of strength for every day of the year.

945-1853 SERGIUS NARROWS

945-1936 PROVOROTNI ISLAND, POGIBSHI PT

SEA224
Time Corrector +6 mins
Range Corrector x0.96
Reference 945-1936

SEA223
Time Corrector +6 mins
Range Corrector x0.94
Reference 945-1936

SEA221
Time Corrector 0 mins
Range Corrector x1.08
Reference 945-1853

SEA220
Time Corrector 0 mins
Range Corrector x1.06
Reference 945-1853

SEA219
Time Corrector 0 mins
Range Corrector x1.05
Reference 945-1853

SEA226
Time Corrector 0 mins
Range Corrector x0.99
Reference 945-1936

SEA225
Time Corrector +6 mins
Range Corrector x0.97
Reference 945-1936

SEA222
Time Corrector 0 mins
Range Corrector x1.10
Reference 945-1853

BARANOF ISLAND

F ISLAND

T R A I L

DUPPEL PENINSULA