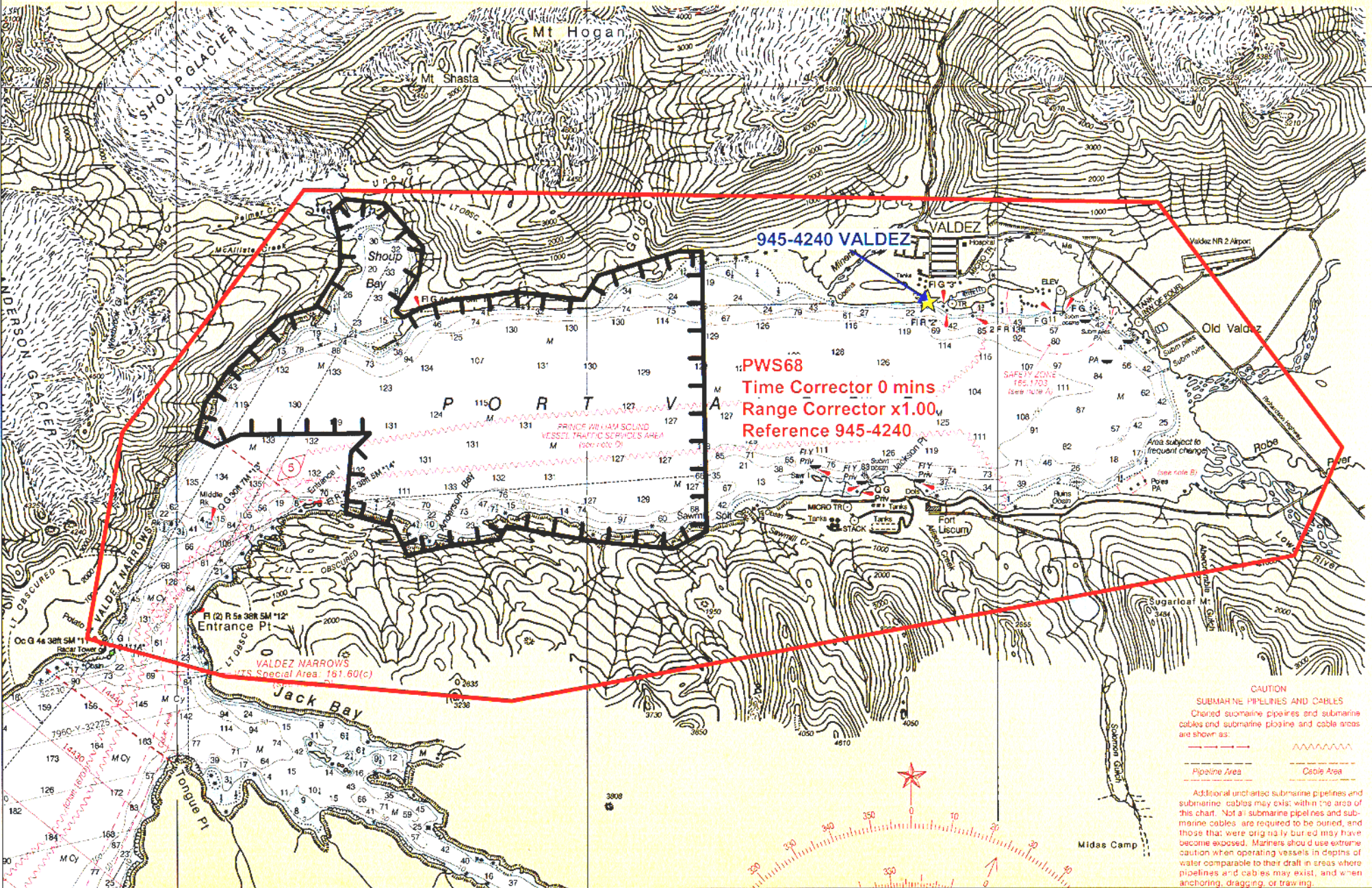


# Final Tidal Zoning for OPR-P151-RA-2003 Western Port Valdez, AK - Sheet H11181

25' 20' 15'



945-4240 VALDEZ

**PWS68**  
Time Corrector 0 mins  
Range Corrector x1.00  
Reference 945-4240

**CAUTION**  
SUBMARINE PIPELINES AND CABLES  
Charged submarine pipelines and submarine cables and submarine piling and cable areas are shown as:

Pipeline Area	Cable Area

Additional uncharted submarine pipelines and submarine cables may exist within the area of this chart. Not all submarine pipelines and submarine cables are required to be surveyed, and those that were originally buried may have become exposed. Mariners should use extreme caution when operating vessels in depths of water comparable to their draft in areas where pipelines and cables may exist, and when anchoring, dragging, or trawling.

