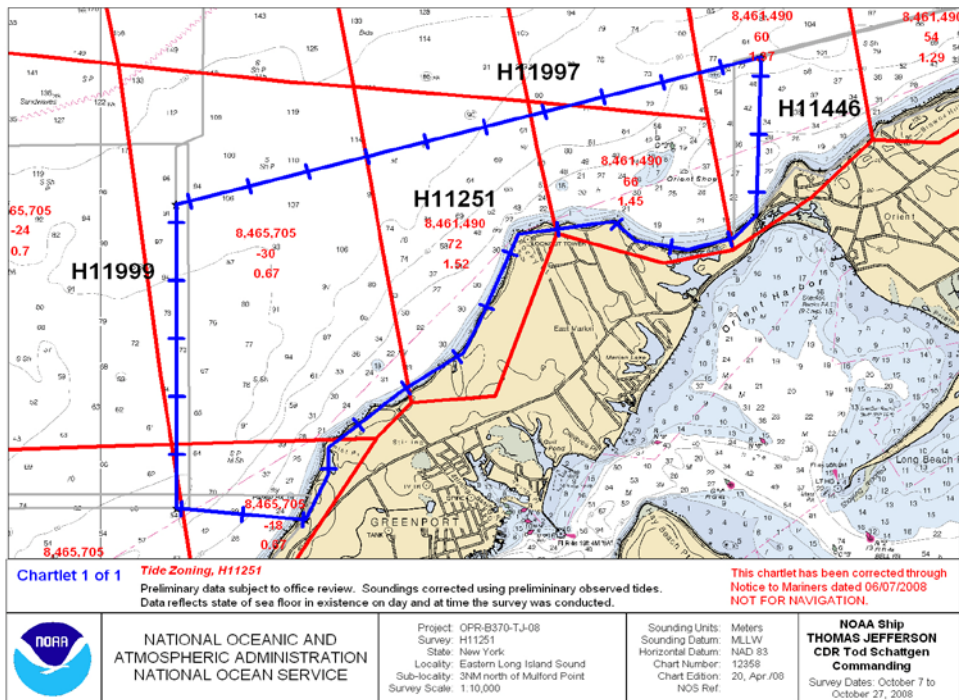


Figure 2 Tide Zoning



All other datum reduction procedures conform to those outlined in the *DAPR*.

All methods and instruments used for sound velocity correction were as described in the *DAPR*. A table detailing all sound velocity casts is located in Separate II* of this Descriptive Report.

**Filed with original field records.*

B.4 DATA PROCESSING

There were 763 raw files and 762 processed files. The extra raw files were false starts.

B.4.1 TOTAL PROPAGATED UNCERTAINTY

For the 2008 field season, Total Propagated Uncertainty is identified as TPE (Total Propagated error) in CARIS. The parameters for sound speed and tides are calculated separately for each project. The project-specific parameters for OPR-B370-TJ-08, Survey H11251 are as follows:

Table 5 TPU Parameters

Vessel	Tide Values		Sound Speed Values		Mode
	Measured	Zoning	Measured	Surface	
3101	0	0.19	4	0.2	CTD
3102	0	0.19	4	0.2	CTD
S222	0	0.19	4	0.2	CTD
S222	0	0.19	1	0.2	MVP