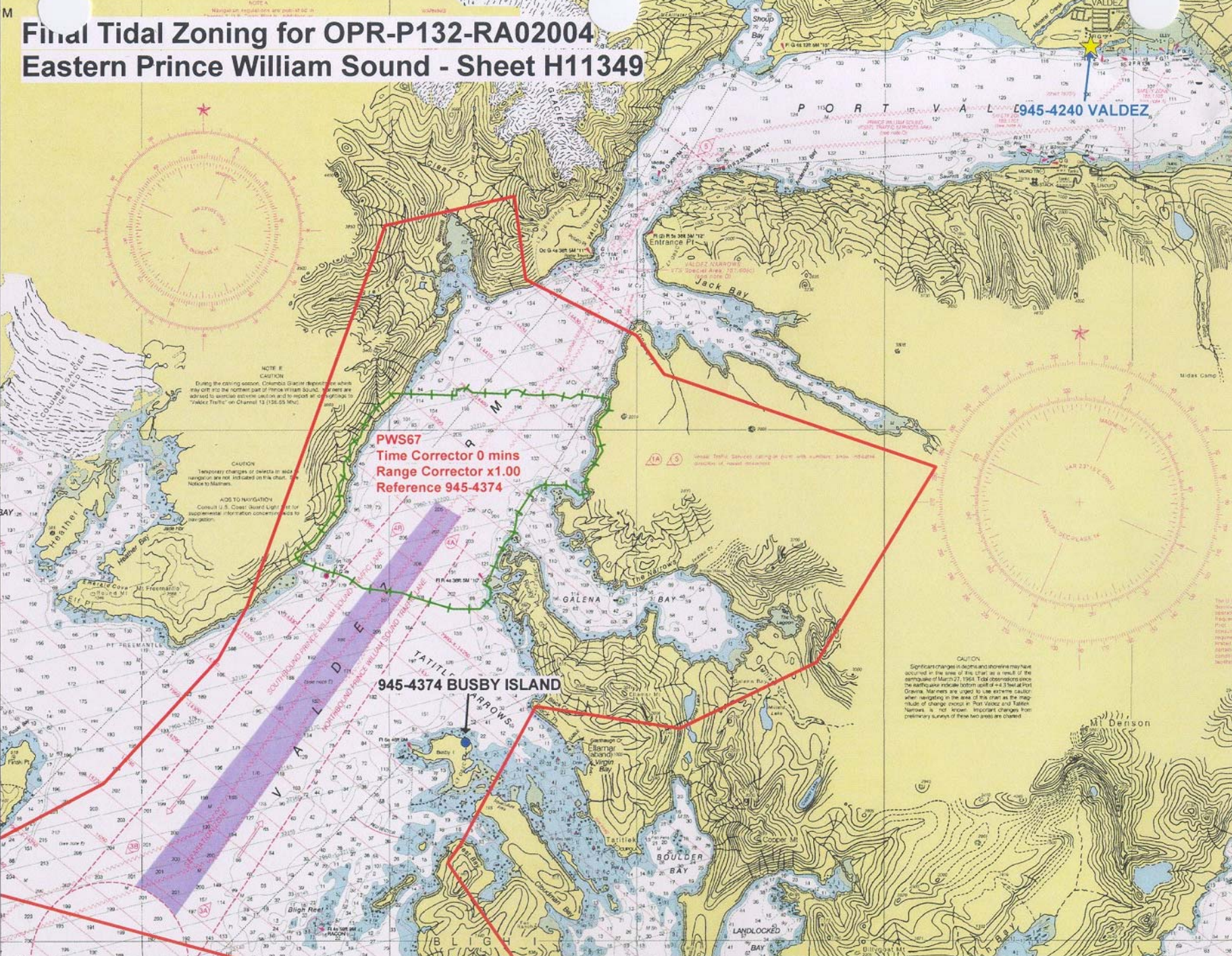


Final Tidal Zoning for OPR-P132-RA02004 Eastern Prince William Sound - Sheet H11349



NOTE E
CAUTION
During the sailing season, Columbia Strait tides and currents which may drift into the northern part of Prince William Sound. Mariners are advised to exercise extreme caution and to report all sightings to "Valdez Traffic" on Channel 13 (158.45 MHz).

CAUTION
Temporary changes or defects in aid navigation are not indicated on this chart. Notice to Mariners.

AIDS TO NAVIGATION
Consult U.S. Coast Guard Light List for supplemental information concerning aids to navigation.

CAUTION
Significant changes in depths and shoreline may have occurred in the area of this chart as a result of the earthquake of March 27, 1964. Total coseismic uplift of the earthquake indicate bottom uplift of +4.3 feet at Port Dena. Mariners are urged to use extreme caution when navigating in the area of this chart as the magnitude of change exceed in Port Valdez and Taffel. Notices is not recent. Important changes from preliminary surveys of these two areas are charted.

PWS67
Time Corrector 0 mins
Range Corrector x1.00
Reference 945-4374

945-4374 BUSBY ISLAND