

**Final Tidal Zoning  
for OPR-O167-FA-2005, H11363  
Southern Portion of Spanish Islands  
Cape Decision, AK**

**SA231**  
Time Corrector 0 mins  
Range Corrector x 0.99  
Reference 945-0913

**SA230**  
Time Corrector 0 mins  
Range Corrector x 1.00  
Reference 945-0913

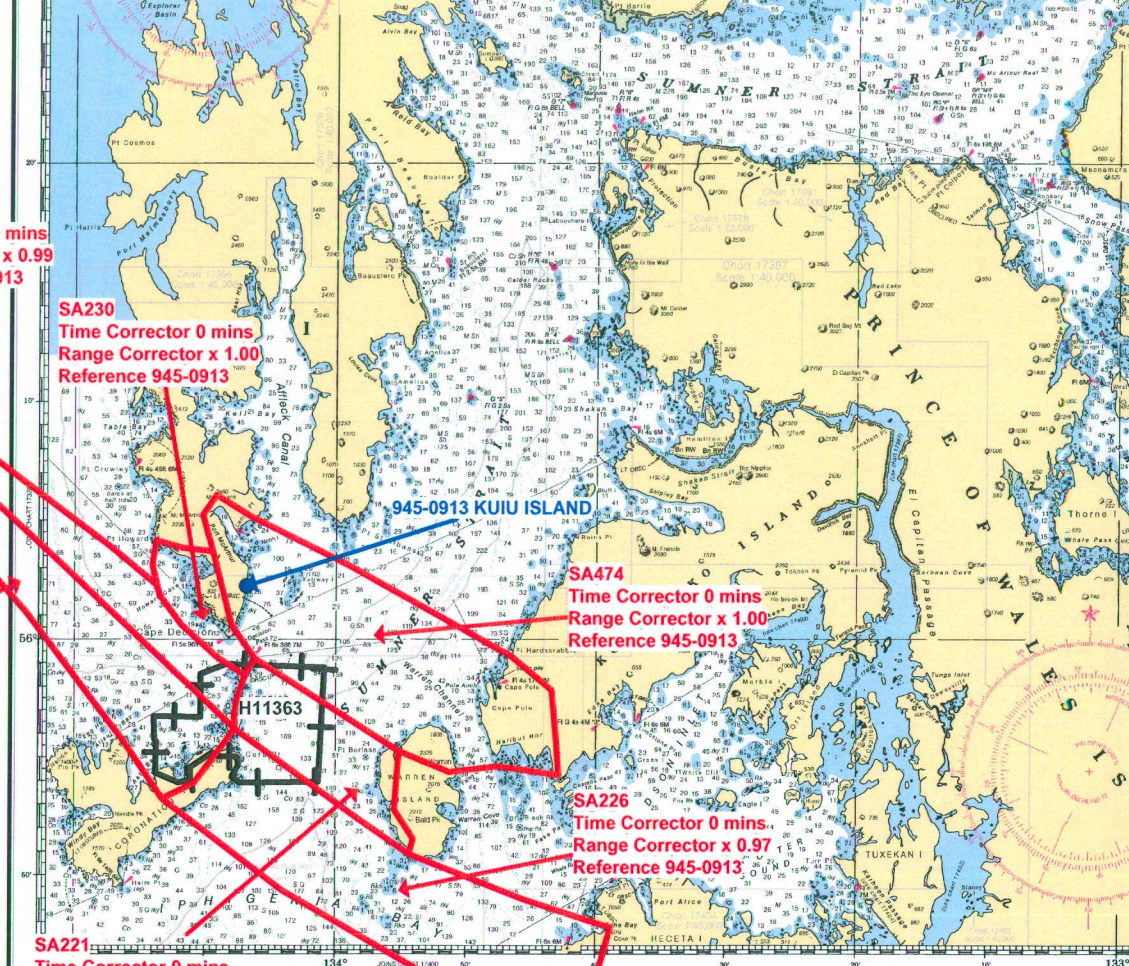
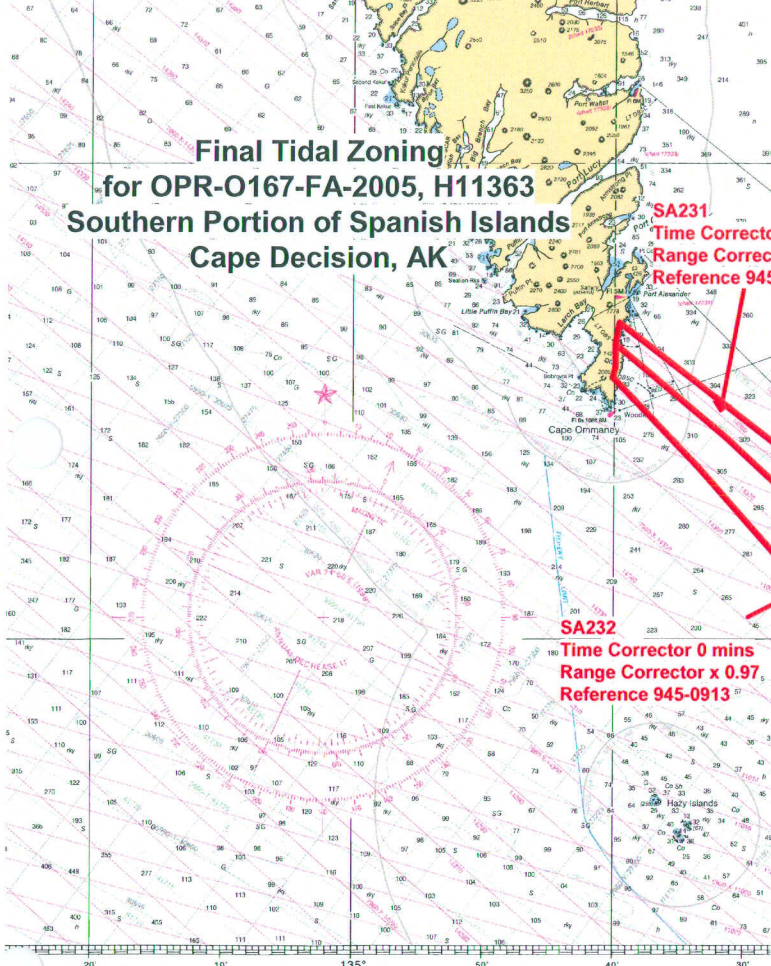
**SA232**  
Time Corrector 0 mins  
Range Corrector x 0.97  
Reference 945-0913

**SA474**  
Time Corrector 0 mins  
Range Corrector x 1.00  
Reference 945-0913

**SA226**  
Time Corrector 0 mins  
Range Corrector x 0.97  
Reference 945-0913

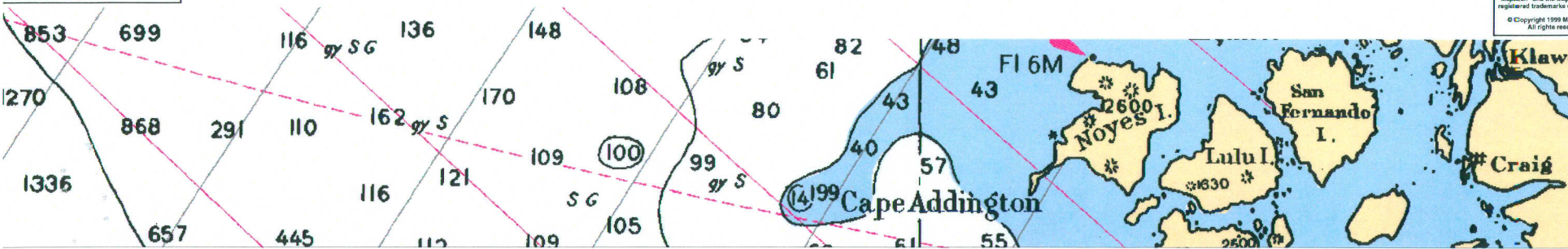
**SA221**  
Time Corrector 0 mins  
Range Corrector x 0.99  
Reference 945-0913

**SOUNDINGS IN FATHOMS**



DEPTH	1	2	3	4	5	6	7	8	9	10
1	1	2	3	4	5	6	7	8	9	10
2	2	3	4	5	6	7	8	9	10	11
3	3	4	5	6	7	8	9	10	11	12
4	4	5	6	7	8	9	10	11	12	13
5	5	6	7	8	9	10	11	12	13	14
6	6	7	8	9	10	11	12	13	14	15
7	7	8	9	10	11	12	13	14	15	16
8	8	9	10	11	12	13	14	15	16	17
9	9	10	11	12	13	14	15	16	17	18
10	10	11	12	13	14	15	16	17	18	19

**Navigation Certificate of Authenticity**  
This chart was produced under the authority of the National Oceanic and Atmospheric Administration (NOAA). NOAA is the national office for the United States of America. The digital data from which this electronic chart was produced has been certified by NOAA for navigation. "NOAA" and the NOAA emblem are registered trademarks of the National Oceanic and Atmospheric Administration. The Maptech emblem are trademarks of Maptech, Inc. © 1999 Maptech, Inc. All rights reserved.



**Electronic Navigation**  
This electronic chart was produced by NOAA's National Oceanic and Atmospheric Administration. It is provided by NOAA from a certified electronic chart provider. NOAA and the NOAA emblem are registered trademarks of the National Oceanic and Atmospheric Administration. The Maptech emblem are trademarks of Maptech, Inc. © 1999 Maptech, Inc. All rights reserved.