

Final Tidal Zoning for OPR-P132-RA-2004 Eastern Prince William Sound - Sheet H11366

LORAN-C

GENERAL EXPLANATION

LORAN-C FREQUENCY 1000KHz
PLATE NUMBER H11366
TIME ZONE PACIFIC STANDARD TIME
TIME ZONE DIFFERENCE FROM GMT -8:00
TIME ZONE ABBREVIATION PST
TIME ZONE REFERENCE See note on page 11366-1

RATES ON THIS CHART

TIME-X 7360-Y
TIME 7360-Y
TIME 7360-Y

HORIZONTAL DATUM
 The horizontal datum of this chart is the North American Datum of 1983 (NAD 83), which is based upon the ellipsoid defined by the Geodetic Reference System of 1980. The datum is based upon the ellipsoid defined by the Geodetic Reference System of 1980.

VERTICAL DATUM
 The vertical datum of this chart is the Mean Sea Level (MSL) datum, which is based upon the mean sea level of the year 1984. The datum is based upon the mean sea level of the year 1984.

NEARLY LEVEL INDICATORS
 Near level indicators are shown on this chart as follows: (1) a small circle with a horizontal line through it, indicating a level of 100 feet; (2) a small circle with a horizontal line through it and a vertical line through it, indicating a level of 200 feet; (3) a small circle with a horizontal line through it and a vertical line through it and a diagonal line through it, indicating a level of 300 feet.

NOTES TO MARINERS
 Charts of the United States Coast and Geodetic Survey are published by the National Oceanic and Atmospheric Administration, Department of Commerce, Washington, D.C. 20541. The charts are published in the United States Coast and Geodetic Survey Catalog, which is published by the National Oceanic and Atmospheric Administration, Department of Commerce, Washington, D.C. 20541.

COLLISION REPORT
 Reports of collisions between vessels are published in the United States Coast and Geodetic Survey Bulletin, which is published by the National Oceanic and Atmospheric Administration, Department of Commerce, Washington, D.C. 20541.

NOTE #1
 During the sailing season, charts of the United States Coast and Geodetic Survey are published in the United States Coast and Geodetic Survey Catalog, which is published by the National Oceanic and Atmospheric Administration, Department of Commerce, Washington, D.C. 20541.

NOTE #2
 The National Oceanic and Atmospheric Administration, Department of Commerce, Washington, D.C. 20541, is the authority for the publication of this chart.

NOTE #3
 The National Oceanic and Atmospheric Administration, Department of Commerce, Washington, D.C. 20541, is the authority for the publication of this chart.

NOTE #4
 The National Oceanic and Atmospheric Administration, Department of Commerce, Washington, D.C. 20541, is the authority for the publication of this chart.

NOTE #5
 The National Oceanic and Atmospheric Administration, Department of Commerce, Washington, D.C. 20541, is the authority for the publication of this chart.

NOTE #6
 The National Oceanic and Atmospheric Administration, Department of Commerce, Washington, D.C. 20541, is the authority for the publication of this chart.

NOTE #7
 The National Oceanic and Atmospheric Administration, Department of Commerce, Washington, D.C. 20541, is the authority for the publication of this chart.

NOTE #8
 The National Oceanic and Atmospheric Administration, Department of Commerce, Washington, D.C. 20541, is the authority for the publication of this chart.

NOTE #9
 The National Oceanic and Atmospheric Administration, Department of Commerce, Washington, D.C. 20541, is the authority for the publication of this chart.

NOTE #10
 The National Oceanic and Atmospheric Administration, Department of Commerce, Washington, D.C. 20541, is the authority for the publication of this chart.

NOTE #11
 The National Oceanic and Atmospheric Administration, Department of Commerce, Washington, D.C. 20541, is the authority for the publication of this chart.

NOTE #12
 The National Oceanic and Atmospheric Administration, Department of Commerce, Washington, D.C. 20541, is the authority for the publication of this chart.

NOTE #13
 The National Oceanic and Atmospheric Administration, Department of Commerce, Washington, D.C. 20541, is the authority for the publication of this chart.

NOTE #14
 The National Oceanic and Atmospheric Administration, Department of Commerce, Washington, D.C. 20541, is the authority for the publication of this chart.

NOTE #15
 The National Oceanic and Atmospheric Administration, Department of Commerce, Washington, D.C. 20541, is the authority for the publication of this chart.

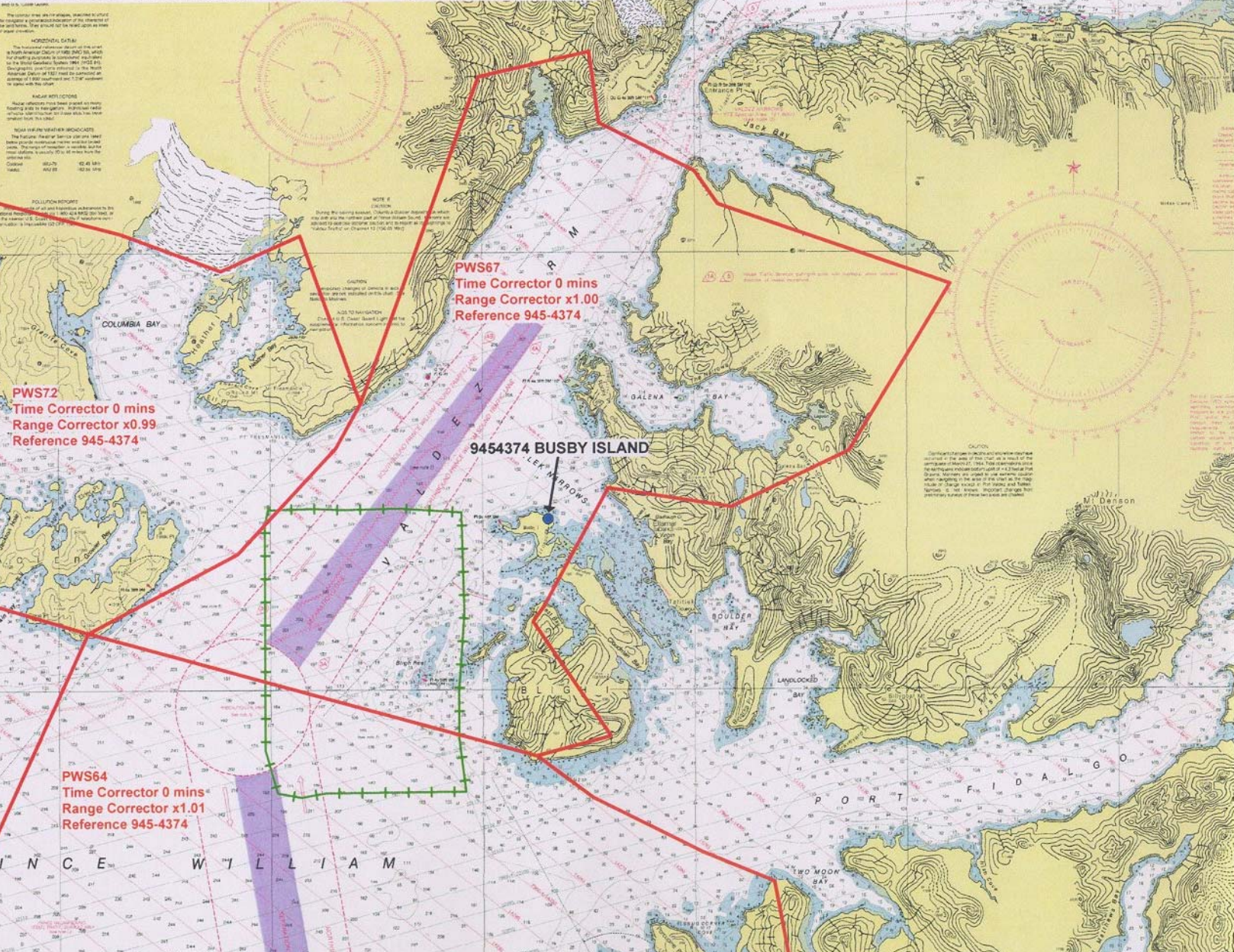
NOTE #16
 The National Oceanic and Atmospheric Administration, Department of Commerce, Washington, D.C. 20541, is the authority for the publication of this chart.

NOTE #17
 The National Oceanic and Atmospheric Administration, Department of Commerce, Washington, D.C. 20541, is the authority for the publication of this chart.

NOTE #18
 The National Oceanic and Atmospheric Administration, Department of Commerce, Washington, D.C. 20541, is the authority for the publication of this chart.

NOTE #19
 The National Oceanic and Atmospheric Administration, Department of Commerce, Washington, D.C. 20541, is the authority for the publication of this chart.

NOTE #20
 The National Oceanic and Atmospheric Administration, Department of Commerce, Washington, D.C. 20541, is the authority for the publication of this chart.



PWS72
 Time Corrector 0 mins
 Range Corrector x0.99
 Reference 945-4374

PWS67
 Time Corrector 0 mins
 Range Corrector x1.00
 Reference 945-4374

PWS64
 Time Corrector 0 mins
 Range Corrector x1.01
 Reference 945-4374

9454374 BUSBY ISLAND

PRINCE WILLIAM

SOUND

PORT VALDEZ

PORT FIDALGO