

Final Tidal Zoning for OPR-P132-RA-2004 Eastern Prince William Sound - Sheet H11368

LOTRAN-C
GENERAL EXPLANATION

SCALE
GRAPHIC INTERVAL: 1:50,000

PROJECTION
TRANSVERSE MERCATOR

UNIT
Meters

VERTICAL DATUM
Mean High Water

WAVE PERIODS
10m, 20m, 30m, 40m, 50m, 60m, 70m, 80m, 90m, 100m, 110m, 120m, 130m, 140m, 150m, 160m, 170m, 180m, 190m, 200m, 210m, 220m, 230m, 240m, 250m, 260m, 270m, 280m, 290m, 300m, 310m, 320m, 330m, 340m, 350m, 360m, 370m, 380m, 390m, 400m, 410m, 420m, 430m, 440m, 450m, 460m, 470m, 480m, 490m, 500m, 510m, 520m, 530m, 540m, 550m, 560m, 570m, 580m, 590m, 600m, 610m, 620m, 630m, 640m, 650m, 660m, 670m, 680m, 690m, 700m, 710m, 720m, 730m, 740m, 750m, 760m, 770m, 780m, 790m, 800m, 810m, 820m, 830m, 840m, 850m, 860m, 870m, 880m, 890m, 900m, 910m, 920m, 930m, 940m, 950m, 960m, 970m, 980m, 990m, 1000m

RATES ON THIS CHART
7960-X 7960-Y

AUTHORITY
Hydrography will be done by the National Ocean Service, Coast Survey with additional data from the Corps of Engineers, Geological Survey, and U.S. Coast Guard.

VERTICAL DATUM
The vertical datum used in this chart is Mean High Water. The datum is a hypothetical surface of the ocean. It is not the same as the datum used in other charts.

WAVE PERIODS
Wave indicators have been placed on many soundings to show the period of the waves. The height of the waves is variable, but the period is usually 10 to 20 seconds.

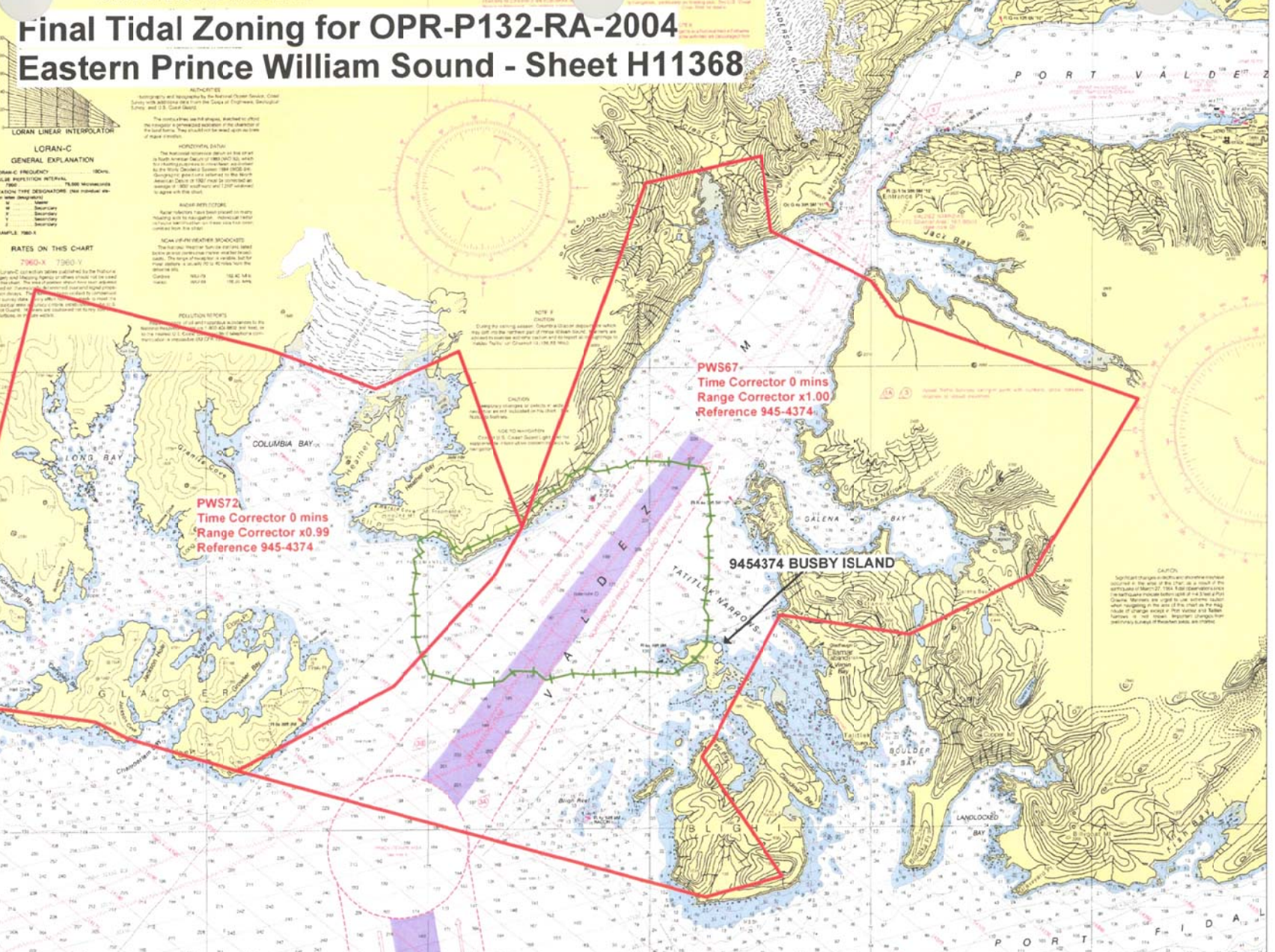
SCALE
1:50,000

PROJECTION
TRANSVERSE MERCATOR

UNIT
Meters

VERTICAL DATUM
Mean High Water

WAVE PERIODS
10m, 20m, 30m, 40m, 50m, 60m, 70m, 80m, 90m, 100m, 110m, 120m, 130m, 140m, 150m, 160m, 170m, 180m, 190m, 200m, 210m, 220m, 230m, 240m, 250m, 260m, 270m, 280m, 290m, 300m, 310m, 320m, 330m, 340m, 350m, 360m, 370m, 380m, 390m, 400m, 410m, 420m, 430m, 440m, 450m, 460m, 470m, 480m, 490m, 500m, 510m, 520m, 530m, 540m, 550m, 560m, 570m, 580m, 590m, 600m, 610m, 620m, 630m, 640m, 650m, 660m, 670m, 680m, 690m, 700m, 710m, 720m, 730m, 740m, 750m, 760m, 770m, 780m, 790m, 800m, 810m, 820m, 830m, 840m, 850m, 860m, 870m, 880m, 890m, 900m, 910m, 920m, 930m, 940m, 950m, 960m, 970m, 980m, 990m, 1000m



PWS72
Time Corrector 0 mins
Range Corrector x0.99
Reference 945-4374

PWS67
Time Corrector 0 mins
Range Corrector x1.00
Reference 945-4374

9454374 BUSBY ISLAND

CAUTION
Significant changes in the chart are shown in red. The chart is based on the work of the Hydrographic Survey of the United States Coast and Geodetic Survey. The chart is not to be used for navigation unless it is used in conjunction with the latest information available from the Hydrographic Survey of the United States Coast and Geodetic Survey.