

H11385

NOAA FORM 76-35A

U.S. DEPARTMENT OF COMMERCE
NATIONAL OCEANIC AND ATMOSPHERIC ADMINISTRATION
NATIONAL OCEAN SURVEY

DESCRIPTIVE REPORT

Type of Survey: **Hydrographic**

Field No.: Sheet B

Registry Number: **H11385**

LOCALITY

State: Mississippi

General Locality: Mississippi Sound

Sub-locality: Bayou Cassotte to
Lower Pascagoula Channel

2005

CHIEF OF PARTY

Mark McMann

LIBRARY & ARCHIVES

DATE

HYDROGRAPHIC TITLE SHEET

H11385

INSTRUCTIONS: The Hydrographic Sheet should be accompanied by this form, filled in as completely as possible, when the sheet is forwarded to the Office.

State: **Mississippi**

General Locality: **Mississippi Sound**

Sub-Locality: **Bayou Cassotte to Lower Pascagoula Channel**

Scale: **1:10,000** Date of Survey: **January 12, 2005 – July 5, 2005**

Instructions Dated: **November 19, 2004** Project Number: **OPR-J376-NRT4**

Vessel: **S1211, S3002**

Chief of Party: **Mark McMann**

Surveyed by: **MJM, LAM, EAL, JRM, JWB, SLB**

Soundings by: **echosounder**

Graphic record scaled by: **MJM, LAM, EAL, JRM, JWB, SLB**

Graphic record checked by: **MJM, LAM, EAL, JRM, JWB, SLB**

Automated Plot by: **HP 750Cplus**

Verification by: **Atlantic Hydrographic Branch Personnel**

Soundings in: **meters *F*et at MLLW**

Remarks: *1) All Times are UTC.*
2) Projection is UTM Zone 16.

Bold italic red notes in the Descriptive Report were made during office processing.

TABLE OF CONTENTS

A. AREA SURVEYED	1
B. DATA ACQUISITION AND PROCESSING	2
B.1. EQUIPMENT	2
B.2. QUALITY CONTROL	3
B.3. CORRECTIONS TO ECHO SOUNDING	4
C. VERTICAL AND HORIZONTAL CONTROL.....	5
D. RESULTS AND RECOMMENDATIONS	6
D.1. CHART COMPARISON	7
D.2. ADDITIONAL RESULTS	7-9
E. APPROVAL SHEET.....	paper copy included (signed)

DESCRIPTIVE REPORT
to accompany
HYDROGRAPHIC SURVEY H-11385

Scale of Survey: 1:10,000
Year of Survey: 2005
Navigation Response Team 1 - Launch 1211& Launch 3001
Mark J. McMann - Team Leader

A. AREA SURVEYED

This hydrographic survey was conducted in accordance with Hydrographic Port Instructions for project OPR-J376-NRT4-04, Pascagoula Bay, Mississippi. The instructions are dated June 19, 2003.

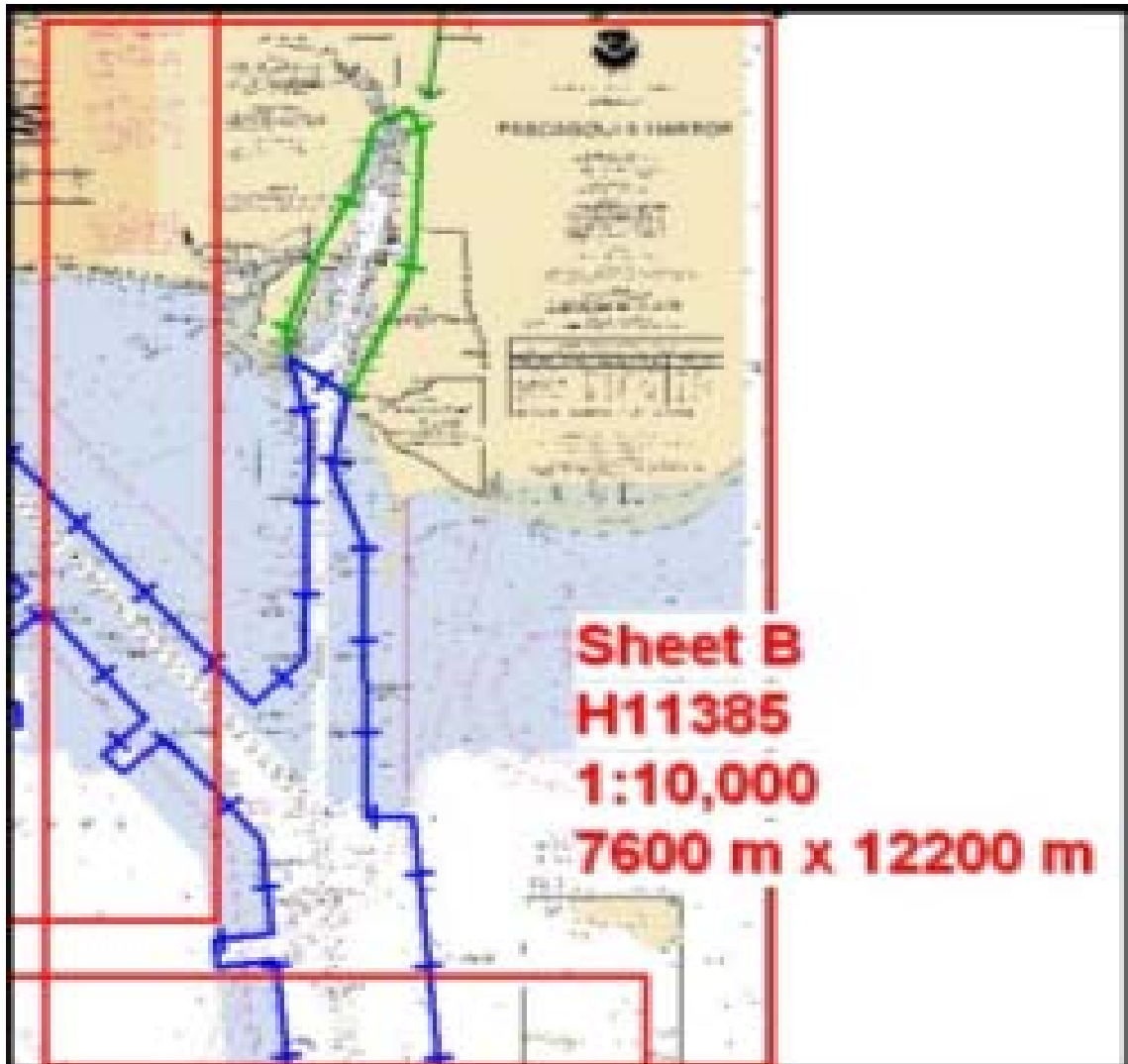
The Port of Pascagoula has been identified by MCD in 2004 as a priority major port ready for Chart Evaluation. Additionally, the U.S. Naval Station Port of Pascagoula is expanding its operations to accommodate larger vessels. Significant changes have occurred in the facilities and shoreline in Pascagoula Harbor both in the Pascagoula River Area and also the East Harbor.

Survey Limits for Sheet "B" H-11385 are as follows:

North 30°22'10"N
East 088°27'49" W
South 30°15'35.0" N
West 088°32'34.4" W

Survey Dates: January 12, 2005 (DN: 012) to ~~June 20~~ **July 5, 2005** (DN: ~~171~~ **186**)

Survey limits are displayed graphically in the chartlet on the following page.



B. DATA ACQUISITION AND PROCESSING *See also the Evaluation Report*

B.1. EQUIPMENT

Data was acquired by Navigation Response Team 1, on board survey Launches 1211 and 3001. These vessels were configured as described in the Data Acquisition and Processing Report (DAPR*) for this project. Major data acquisition systems are summarized below.

An Innerspace model 455 depth sounder was used on Launch 1211 to collect soundings on this survey. An Odom Echotrac C/V model depth sounder was used on Launch 3001 to collect echo soundings on this survey. A standard lead line calibrated in meters, S/N 1211, was used during this survey for comparison with the echo sounders. No problems were encountered with any of the sounding equipment.

** Data filed at the Atlantic Hydrographic Branch.*

Two Klein 3110 side scan sonar recorders with model 3210 towfish were used throughout this survey. The side scan sonar equipment was used to collect 200% bottom coverage and investigate AWOIS items.

Trimble DGPS Beacon Receivers were used as the primary navigation station on both Launch 1211 and Launch 3001.

A Trimble Pathfinder ProXRS (S/N 0224049380) and antenna (S/N 0220284585) were used for all ENC high accuracy positioning and establishment of calibration points.

A Seabird-Seacat Velocity Profiler model 19-03 (S/N 192276-0287) and an Odom Digibar S/N 98294-080904 were used for determining corrections for the speed of sound through the water column on launch 1211. An Odom Digibar S/N 98150-020205 was used on launch 3001.

NOAA launches 1211 and 3001, 27-foot SeaArks with drafts of 0.5 meters, were used to collect survey data. There were no unusual vessel configurations or problems encountered with these vessels.

B.2. QUALITY CONTROL *See also the Evaluation Report*

The integrity of the survey data for H-11385 has been insured by following the Field Procedures Manual and the NOS Hydrographic Surveys Specifications and Deliverables Manual, June 2003.

The lead line for launches 1211 and 3001 was calibrated using a steel tape on April 4, 2003(DN:094). No corrections were necessary. A static draft of 0.5 meters was applied to the sounding plots by the Caris program. Launch 1211's draft was measured by subtracting the difference from a punch mark on the side of the Launch, 0.6 meter above the transducer, to the water surface. Launch 3001's draft was measured by the same method.

Settlement and squat measurements for launch 1211 were taken on April 4, 2003(DN:094) These measurements were conducted in New Orleans, LA on the Gulf Intracoastal Waterway using the level method. Settlement and squat correctors were applied to the sounding plots using the Caris program.

Settlement and squat measurements for launch 3001 were taken on April 4, 2003(DN:094) These measurements were conducted in New Orleans, LA on the Gulf Intracoastal Waterway using the level method. Settlement and squat correctors were applied to the sounding plots using the Caris program

Differential GPS (DGPS) was used for all hydrographic data acquired on this survey. DGPS performance checks were conducted in accordance with FPM 3.4.4 by comparing the DGPS position of the vessel to a high accuracy (1st order) calibration point.

Side Scan Sonar Quality Control

Daily confidence checks were conducted by observing side scan imagery in the vicinity of known contacts, such as buoys or sand waves. Side scan data were considered satisfactory if these contacts could be distinguished throughout the entire range of the side scan trace. The confidence checks were performed daily at both high and low frequency.

As water depth and/or hazards permitted, 200% bottom coverage was obtained wherever possible within the required survey areas and AWOIS item search radiuses. Side scan sonar coverage was conducted to the 12-foot depth curve and single beam reduced line spacing was performed in other areas where warranted. The towfish was deployed off the starboard quarter of the vessel, which proved very stable. All contacts and shadows were scaled and entered into Caris HIPS/SIPS to determine the height off the bottom. The significant contacts were then compared by position, as well as common depth and relationship to channels to determine if further investigations were needed. All areas surveyed were track line/swath line plotted to insure complete coverage.

The system frequencies used were 100kHz and 500 kHz. The recorder was set on the 50-meter range scale. There were no water depths greater than 20 meters.

When operating in shoaler waters (e.g. less than 30 meters deep), a short tow was required for the Klein system. When cable-out was approximately 7 meters or less, minor degradation of the side scan imagery and Innerspace echosounder traces were noted due to cross-talk between the two systems.

Crossline and mainscheme sounding data were compared using MAPINFO 5.1, with no significant discrepancies observed.

Junctions

There were no junction areas to compare. *Concur*

B.3. CORRECTIONS TO ECHO SOUNDING

A table detailing all sound velocity casts is contained in Separates III - Sound Velocity Profile Data. Sound velocity data has been submitted with the digital data package. Cast data is organized on the digital media as follows: vessel / day of cast / cast data.

After collecting 9,999 fixes, the data collection software reset the fix number to 1. This has no effect on data quality.

C. VERTICAL AND HORIZONTAL CONTROL

The instruments used for determining corrections for the speed of sound through the water column were a Seabird-Seacat Velocity Profiler and 2 Odom Digibars. All sound velocity probes were calibrated within the last 12 months. Data quality assurance tests were performed after each cast. Program VELOCWIN was used for computing the correctors. Corrections were applied to the sounding plot using Caris HIPS.

Field tide reduction of soundings is based on actual unverified tides from the Internet NOAA Co-Ops site. The Dauphin Island, AL tidal gauge (873-5180) is the reference station for predicted tides. In addition, two thirty day gauges were installed, one at Horn Island (874-0405), and another at Pascagoula City Pier (874-1196). Values and correctors were applied at the perspective locations of Hydrography from the Zone files provided by CO-OPS/RDD.

All elevations and soundings on survey H-11385 are based on MLLW unless otherwise specified.

A Request for Approved Tides letter was sent to N/OPS1 on July 22, 2005 (Appendix I).

Horizontal Control

The horizontal datum used for this survey is the North American Datum of 1983 (NAD 83), projected using UTM zone 16.

Horizontal dilution of precision (HDOP) was monitored on Hypack daily. The value never exceeded 4.00, and adequate satellite coverage was maintained throughout the survey period. All positioning equipment was operated in a manner consistent with the manufacturer's requirements and as described in the DAPR. There were no equipment malfunctions which affected the positional quality of the data.

D. RESULTS AND RECOMMENDATIONS

D.1. CHART COMPARISON

There are five charts affected by this survey:

<u>Chart Number</u>	<u>Edition</u>	<u>Edition Date</u>	<u>Next Planned Edition*</u>
11363	39th	September, 2003	September 1, 2006
11373	43 rd	September, 2003	March 1, 2005
11374	32 nd	October, 2003	April 1, 2005
11375	35 th	August, 2002	June, 2005 *
11379	2 nd	December, 2002	July, 2005 *

There are three ENC cells affected by this survey:

<u>ENC Cell</u>	<u>Last Updated</u>	<u>Corresponding Chart</u>	<u>Version</u>
US4MS12M	09/29/04	11373	2
US5MS21M	08/13/04	11374	2
US5MS22M	10/26/04	11375	2

General Agreement with Charted soundings

In general survey soundings are in good agreement with the charted soundings with differences of 2-3 feet. The worst agreement is in the shallow areas (inside the charted 12 foot curve) with current survey soundings being 3-5 feet deeper than the charted soundings. The worst discrepancies are in the vicinity of Lat. 30° 17' 33.2"N, Lon. 88° 31' 59.0"W, where current survey soundings were 8 feet versus 13 foot charted soundings, and the east side of the Bayou Cassotte Channel, where many current survey soundings of 15 to 30 feet were inside the charted 12 foot curve. The charted 6 foot curve east of this area was found to be fairly accurate.

The following is a list of charted items that were investigated or disproved by 200% side scan sonar:

- 1.) A charted note "Shoaling 1969" at Lat. 30° 17' 37.7" N, Lon. 88° 31' 50.9" W, was found to have a least depth of 6 feet in the vicinity of 10 foot charted soundings. The hydrographer recommends removal of the note and charting of current survey soundings in the area. ***Do not concur. No sounding lines were run within the boundary of Shoaling 1969. See E&A Report for addition information.***
- 2.) A charted Submerged Pile PA at Lat 30° 16' 48.1"N, Lon. 88° 30' 29.9"W was covered by 200% side scan sonar during main scheme hydrography. Nothing was found. The Hydrographer recommends removal of the Submerged Pile PA note and charting of current survey soundings. ***Do not Concur. Retain as charted.***

- 3.) Three charted shoals at Lat. 30° 16' 48.6"N, Lon. 88° 30' 58.1"W, Lat. 30° 16' 33.4"N, Lon. 88° 30' 56.9"W, and Lat. 30° 16' 19.4"N, Lon. 88° 30' 54.9"W, were covered by 200% side scan sonar during main scheme hydrography and no indication of shoaling was found. The hydrographer recommends removal of the charted shoals and charting of current survey soundings. *Concur.*
- 4.) A charted note "Shoaling 1969" at Lat. 30° 16' 37.2"N, Lon. 88° 31' 04.9"W, was found to have a least depth of 12 feet in an area of 13 *and 14* foot soundings. The hydrographer recommends removal of the note and charting of current survey soundings. *Concur.*

The following is a list of Charted items that were visually investigated.

There were no items visually inspected.

AWOIS Item Investigations

There were ten AWOIS items within the survey limits. Three of the items were too shallow to investigate with side scan sonar. Three of the items were within the limits of hydrography, and were resolved during main scheme operations. Four of the items were only partially completed due to shallow depths. None of the features were found. *Do not concur.*

Dangers to Navigation

There were no Dangers to Navigation reported on H-11385. *Concur.*

D. 2. ADDITIONAL RESULTS

Aids to Navigation and Other Detached Positions

All Navigation Aids serve their intended purpose. *Concur.*

All floating aids were positioned by the survey vessel and are on station. *Concur.*

Ferry Routes

There are no Ferry routes within the confines of H-11385.

Submarine Cables and Pipelines

There are numerous submarine cables and pipelines within the confines of H-11385. None were investigated or positioned.

Bridges

There are no bridge clearances in the area.

H11385 DR Appendix 2

Registry Number: H-11385
State: Ms
Locality: Mississippi Sound
Sub-locality: Bayou Cassotte to Lower Pascagoula Channel
Project Number: OPR-J376-NRT4-04
Survey Dates: 03/30/2005 - 04/06/2009

Charts Affected

Number	Edition	Date	Scale (RNC)	RNC Correction(s)*
11375	36th	01/01/2005	1:20,000 (11375_1)	USCG LNM: 05/13/2008 (05/20/2008) NGA NTM: 11/18/2006 (05/24/2008)
11374	34th	10/01/2007	1:40,000 (11374_1)	USCG LNM: 12/25/2007 (05/20/2008) NGA NTM: 11/18/2006 (05/24/2008)
11374	32nd	10/01/2003	1:40,000 (11374_2)	[L]NTM: ?
11373	46th	07/01/2007	1:80,000 (11373_1)	USCG LNM: 03/18/2008 (05/27/2008) NGA NTM: 11/18/2006 (06/07/2008)
11366	9th	03/01/2005	1:250,000 (11366_1)	[L]NTM: ?
11360	41st	03/01/2005	1:456,394 (11360_1)	[L]NTM: ?
1115A	41st	03/01/2005	1:456,394 (1115A_1)	[L]NTM: ?
11006	31st	09/01/2003	1:875,000 (11006_1)	[L]NTM: ?
411	49th	03/01/2003	1:2,160,000 (411_1)	[L]NTM: ?

* Correction(s) - source: last correction applied (last correction reviewed--"cleared date")

Features

No.	Name	Feature Type	Survey Depth	Survey Latitude	Survey Longitude	AWOIS Item
1.1	DP3140 - priv marker (Chart)	Marker (privately maintained)	[None]	30° 18' 45.2" N	088° 30' 35.9" W	---
1.2	DP3141 - priv marker (Chart)	Marker (privately maintained)	[None]	30° 18' 39.4" N	088° 30' 54.2" W	---
1.3	DP3152 -priv marker (Chart)	Marker (privately maintained)	[None]	30° 16' 40.9" N	088° 30' 34.5" W	---
1.4	DP3153 - priv marker (Chart)	Marker (privately maintained)	[None]	30° 16' 34.3" N	088° 30' 55.7" W	---
1.5	DP3156 - priv marker (Chart)	Marker (privately maintained)	[None]	30° 18' 21.0" N	088° 31' 47.4" W	---
1.6	Subm Pile (retain)	Obstruction	[None]	30° 19' 40.8" N	088° 30' 50.0" W	---
1.7	DP 4854 green can "WR" w/ white light	Green buoy, lighted	3.91 m	30° 16' 50.6" N	088° 31' 08.1" W	---

1.8	10-ft Obstn	Obstruction	3.95 m	30° 17' 08.0" N	088° 30' 27.6" W	---
1.9	AWOIS#12603 Wk PA (disproved)	Wreck	3.87 m	30° 17' 07.1" N	088° 30' 11.2" W	---
1.10	AWOIS #12599 Obstn PA (Retain)	AWOIS	[no data]	[no data]	[no data]	---
1.11	AWOIS #12597 OBSTN PA Subm piles (Retain)	AWOIS	[no data]	[no data]	[no data]	---
1.12	AWOIS #12598 Obstn "Retain"	AWOIS	[no data]	[no data]	[no data]	---
1.13	AWOIS #12600 Obstn PA (Retain)	AWOIS	[no data]	[no data]	[no data]	---
1.14	AWOIS # 12601 Obstn (Retain)	AWOIS	[no data]	[no data]	[no data]	---
1.15	AWOIS #12602 Subm pipe ED (Retain)	AWOIS	[no data]	[no data]	[no data]	---
1.16	AWOIS #12603 Wk PA (Disproved)	AWOIS	[no data]	[no data]	[no data]	---
1.17	AWOIS #12605 Reference 5ft Wk 151/1	AWOIS	[no data]	[no data]	[no data]	---
1.18	AWOIS #12606 Visible Wk PA (Retain)	AWOIS	[no data]	[no data]	[no data]	---
1.19	AWOIS #12604 9ft Obstn 251/1	Obstruction	2.79 m	30° 16' 53.1" N	088° 31' 08.8" W	---
1.20	12ft Obstn 188/1	Obstruction	3.60 m	30° 16' 54.6" N	088° 30' 35.4" W	---
1.21	11ft Wk 225/1	Wreck	3.44 m	30° 15' 56.1" N	088° 30' 58.1" W	---
1.22	AWOIS #12605 5ft Wk 151/1	Wreck	1.69 m	30° 16' 51.4" N	088° 31' 08.2" W	12604
1.23	13ft Obstn 230/1	Obstruction	4.08 m	30° 16' 30.2" N	088° 30' 51.0" W	---
1.24	Rear Range "D" (Revise)	Marker rear dredging range	[None]	30° 15' 47.3" N	088° 30' 46.7" W	---
1.25	Charted Wk ED (disproved)	GP	[None]	30° 17' 14.5" N	088° 30' 51.5" W	---
1.26	Subm Pile PA (retain)	Obstruction	[None]	30° 16' 48.1" N	088° 30' 30.0" W	---
1.27	Charted Subm pile PA	Obstruction	[None]	30° 18' 12.8" N	088° 30' 35.8" W	---

1 - DR Appendix 2

1.1) DP3140 - priv marker (Chart)

Survey Summary

Survey Position: 30° 18' 45.2" N, 088° 30' 35.9" W
Least Depth: [None]
TPU ($\pm 1.96\sigma$): **THU (TPEh)** [None] ; **TVU (TPEv)** [None]
Timestamp: 2005-089.19:26:17.000 (03/30/2005)
DP Dataset: h11385_pascagoula_sheet_b / 3001dp_echosounder / 2005-089 / 03302005
Profile/Beam: 8/1
Charts Affected: 11375_1, 11374_2, 11373_1, 11366_1, 1115A_1, 11360_1, 11006_1, 411_1

Remarks:

CONCRETE PILE W/ yellow LT PRIVATE MAINT. Charted position is 37m southwest of DP. Light still serves its intended purpose. USCG LIGHT LIST # 7400

Feature Correlation

Address	Feature	Range	Azimuth	Status
h11385_pascagoula_sheet_b/3001dp_echosounder/2005-089/03302005	8/1	0.00	000.0	Primary

Hydrographer Recommendations

Hydrographer recommends moving charted marker to surveyed position.

S-57 Data

Geo object 1: Beacon, special purpose/general (BCNSPP)
Attributes: BCNSHP - 5:pole beacon
 CATSPM - 13:private mark
 COLOUR - 9:amber
 INFORM - CONCRETE PILE W/ yellow LT PRIVATE MAINT. Charted position is 37m southwest of DP. Light still serves its intended purpose. USCG LIGHT LIST # 7400
 SORDAT - 20050705
 SORIND - US,US,survey,H11385
Geo object 2: Light (LIGHTS)
Attributes: COLOUR - 6:yellow

INFORM - CONCRETE PILE W/ yellow LT PRIVATE MAINT. Charted position is 37m southwest of DP.
Light still serves its intended purpose. USCG LIGHT LIST # 7400

VERDAT - 12:Mean lower low water

Office Notes

Concur. Recommend to delete FL Y 2.5s 15ft "B" at the charted location. Recommend to chart private beacon at the surveyed location and as per survey documentation.

Feature Images



Figure 1.1.1

1.2) DP3141 - priv marker (Chart)

Survey Summary

Survey Position: 30° 18' 39.4" N, 088° 30' 54.2" W
Least Depth: [None]
TPU ($\pm 1.96\sigma$): **THU (TPEh)** [None] ; **TVU (TPEv)** [None]
Timestamp: 2005-089.19:28:57.000 (03/30/2005)
DP Dataset: h11385_pascagoula_sheet_b / 3001dp_echosounder / 2005-089 / 03302005
Profile/Beam: 9/1
Charts Affected: 11375_1, 11374_2, 11373_1, 11366_1, 1115A_1, 11360_1, 11006_1, 411_1

Remarks:

CONCRETE PILE W/ AMBER LT PRIVATE MAINT. EXP 4M. This Marker is for the Pipeline.
 USCG LIGHT LIST # 7395

Feature Correlation

Address	Feature	Range	Azimuth	Status
h11385_pascagoula_sheet_b/3001dp_echosounder/2005-089/03302005	9/1	0.00	000.0	Primary

Hydrographer Recommendations

Retain as charted.

S-57 Data

Geo object 1: Beacon, special purpose/general (BCNSPP)
Attributes: BCNSHP - 5:pile beacon
 CATSPM - 13:private mark
 COLOUR - 9:amber
 CONRAD - 1:radar conspicuous
 INFORM - CONCRETE PILE W/ AMBER LT PRIVATE MAINT. EXP 4M. USCG LIGHT LIST # 7395
 SORDAT - 20050705
 SORIND - US,US,survey,H11385
 VERDAT - 16:Mean high water
Geo object 2: Light (LIGHTS)

Attributes: COLOUR - 6:yellow
INFORM - CONCRETE PILE W/ AMBER LT PRIVATE MAINT. EXP 4M. USCG LIGHT LIST # 7395
VERDAT - 12:Mean lower low water

Office Notes

Do not concur. Recommend to chart private beacon at the surveyed location and as documented (30°18'39.368"N, 088°30'54.173"W)
. Recommend to delete charted private beacon (Fl Y 2.5s 15ft "A" Priv).

Feature Images



Figure 1.2.1

1.3) DP3152 -priv marker (Chart)

Survey Summary

Survey Position: 30° 16' 40.9" N, 088° 30' 34.5" W
Least Depth: [None]
TPU (±1.96σ): **THU (TPEh)** [None] ; **TVU (TPEv)** [None]
Timestamp: 2005-089.19:51:56.000 (03/30/2005)
DP Dataset: h11385_pascagoula_sheet_b / 3001dp_echosounder / 2005-089 / 03302005
Profile/Beam: 20/1
Charts Affected: 11375_1, 11374_1, 11374_2, 11373_1, 11366_1, 1115A_1, 11360_1, 11006_1, 411_1

Remarks:

STEELE PILE W/ AMBER LT PRIVAT. MAINT. Not charted.

Feature Correlation

Address	Feature	Range	Azimuth	Status
h11385_pascagoula_sheet_b/3001dp_echosounder/2005-089/03302005	20/1	0.00	000.0	Primary

Hydrographer Recommendations

Hydrographer recommends charting marker as located by survey.

S-57 Data

Geo object 1: Beacon, special purpose/general (BCNSPP)
Attributes: BCNSHP - 5:pile beacon
 CATSPM - 13:private mark
 COLOUR - 9:amber
 CONRAD - 1:radar conspicuous
 HEIGHT - 5 m
 INFORM - STEELE PILE W/ AMBER LT PRIVAT. MAINT. Not charted.
 SORDAT - 20050705
 SORIND - US,US,survey,H11385
 STATUS - 1,8:permanent,private
 VERDAT - 16:Mean high water

Geo object 2: Light (LIGHTS)
Attributes: CATLIT - 1:directional function
COLOUR - 6:yellow
HEIGHT - 4 m
INFORM - STEELE PILE W/ AMBER LT PRIVAT. MAINT. Not charted.
STATUS - 1,8:permanent,private

Office Notes

Concur. Recommend to chart Private beacon with amber light and steel pipe. Priv Marker intended use is for marking pipeline.

Feature Images



Figure 1.3.1

1.4) DP3153 - priv marker (Chart)

Survey Summary

Survey Position: 30° 16' 34.3" N, 088° 30' 55.7" W
Least Depth: [None]
TPU ($\pm 1.96\sigma$): **THU (TPEh)** [None] ; **TVU (TPEv)** [None]
Timestamp: 2005-089.19:54:16.000 (03/30/2005)
DP Dataset: h11385_pascagoula_sheet_b / 3001dp_echosounder / 2005-089 / 03302005
Profile/Beam: 21/1
Charts Affected: 11375_1, 11374_1, 11374_2, 11373_1, 11366_1, 1115A_1, 11360_1, 11006_1, 411_1

Remarks:

CONCRETE PILE W/ AMBER LT PRIVAT. MAINT. Charted position is approximately 130m ENE of DP. Light still serves its intended purpose. USCG LIGHT LIST # 7035

Feature Correlation

Address	Feature	Range	Azimuth	Status
h11385_pascagoula_sheet_b/3001dp_echosounder/2005-089/03302005	21/1	0.00	000.0	Primary

Hydrographer Recommendations

Hydrographer recommends moving charted marker to surveyed position.

S-57 Data

Geo object 1: Beacon, special purpose/general (BCNSPP)
Attributes: BCNSHP - 5:pile beacon
 CATSPM - 13:private mark
 COLOUR - 9:amber
 INFORM - CONCRETE PILE W/ AMBER LT PRIVAT. MAINT. Charted position is approximately 130m ENE of DP. Light still serves its intended purpose. USCG LIGHT LIST # 7035
 SORDAT - 20050705
 SORIND - US,US,survey,H11385
 VERDAT - 16:Mean high water
Geo object 2: Light (LIGHTS)

Attributes: INFORM - CONCRETE PILE W/ AMBER LT PRIVAT. MAINT. Charted position is approximately 130m ENE of DP. Light still serves its intended purpose. USCG LIGHT LIST # 7035

Office Notes

Concur. Chart private beacon with amber light and small platform as surveyed. Priv Marker "C" is for Pipeline. Recommend to delete the charted private beacon (Fl Y 2.5s 15ft "C" Priv located in Latitude 30°16'34.6"N, Longitude 088°30'50.4"W).

Feature Images



Figure 1.4.1

1.5) DP3156 - priv marker (Chart)

Survey Summary

Survey Position: 30° 18' 21.0" N, 088° 31' 47.4" W
Least Depth: [None]
TPU ($\pm 1.96\sigma$): **THU (TPEh)** [None] ; **TVU (TPEv)** [None]
Timestamp: 2005-089.20:03:39.000 (03/30/2005)
DP Dataset: h11385_pascagoula_sheet_b / 3001dp_echosounder / 2005-089 / 03302005
Profile/Beam: 24/1
Charts Affected: 11375_1, 11374_1, 11374_2, 11373_1, 11366_1, 1115A_1, 11360_1, 11006_1, 411_1

Remarks:

CONCRETE PILE W/ AMBER LT - PRIVATELY MAINT. - EXP 4M Charted position is approximately 45m NNE of dp. Light still serves its intended purpose. USCG LIGHT LIST # 7110

Feature Correlation

Address	Feature	Range	Azimuth	Status
h11385_pascagoula_sheet_b/3001dp_echosounder/2005-089/03302005	24/1	0.00	000.0	Primary

Hydrographer Recommendations

Hydrographer recommends moving charted marker to surveyed position.

S-57 Data

Geo object 1: Beacon, special purpose/general (BCNSPP)
Attributes: BCNSHP - 5:pile beacon
 CATSPM - 13:private mark
 COLOUR - 9:amber
 HEIGHT - 4 m
 INFORM - CONCRETE PILE W/ AMBER LT - PRIVATELY MAINT. - EXP 4M Charted position is approximately 45m NNE of dp. Light still serves its intended purpose. USCG LIGHT LIST # 7110
 STATUS - 1:permanent
 VERDAT - 16:Mean high water
Geo object 2: Light (LIGHTS)
Attributes: COLOUR - 9:amber

HEIGHT - 4 m

INFORM - CONCRETE PILE W/ AMBER LT - PRIVATELY MAINT. - EXP 4M Charted position is approximately 45m NNE of dp. Light still serves its intended purpose. USCG LIGHT LIST # 7110

STATUS - 1:permanent

VERDAT - 12:Mean lower low water

Office Notes

Concur. Chart private beacon with concrete pile and amber light as surveyed. Priv beacon intended to mark the charted pipeline. Recommend to delete charted beacon (FL Y 2.5s 15ft "F" Priv) located in 30°18'22.17"N, Longitude 088°31'47.01"W.

Feature Images



Figure 1.5.1

1.6) Subm Pile (retain)

Survey Summary

Survey Position: 30° 19' 40.8" N, 088° 30' 50.0" W
Least Depth: [None]
TPU ($\pm 1.96\sigma$): **THU (TPEh)** [None] ; **TVU (TPEv)** [None]
Timestamp: 2005-139.05:24:55 (05/19/2005)
Survey Line: h11385 / 1211sss500k / 2005-024 / p050124172600
Contact/Point: 0009/1
Charts Affected: 11375_1, 11374_2, 11373_1, 11366_1, 1115A_1, 11360_1, 11006_1, 411_1

Remarks:

Unknown contact. Possibly submerged piles. Item not investigated due to shallow depths.

Feature Correlation

Address	Feature	Range	Azimuth	Status
h11385/1211sss500k/2005-024/p050124172600	0009	0.00	000.0	Primary

Hydrographer Recommendations

[None]

S-57 Data

Geo object 1: Obstruction (OBSTRN)
Attributes: INFORM - Subm Pile
 QUASOU - 6:least depth known
 SORDAT - 20020800
 SORIND - US,US,graph,chart 11375
 TECSOU - 1,2:found by echo-sounder,found by side scan sonar
 VERDAT - 12:Mean lower low water
 WATLEV - 3:always under water/submerged

Office Notes

Submerged pile verified by side scan sonar. Retain as charted.

Feature Images



Figure 1.6.1

1.7) DP 4854 green can "WR" w/ white light

Survey Summary

Survey Position: 30° 16' 50.6" N, 088° 31' 08.1" W
Least Depth: 3.91 m (= 12.83 ft = 2.138 fm = 2 fm 0.83 ft)
TPU ($\pm 1.96\sigma$): **THU (TPEh)** [None]; **TVU (TPEv)** [None]
Timestamp: 2005-167.16:26:26.000 (06/16/2005)
DP Dataset: h11385_pascagoula_sheet_b / 1211dp_echosounder / 2005-167 / 06162005
Profile/Beam: 4/1
Charts Affected: 11375_1, 11374_1, 11374_2, 11373_1, 11366_1, 1115A_1, 11360_1, 11006_1, 411_1

Remarks:

DP on green can "WR" w/ white light - temporary bouy. Marks charted wreck PA (w/in radii of AWOIS Items 12605 12604).

Feature Correlation

Address	Feature	Range	Azimuth	Status
h11385_pascagoula_sheet_b/1211dp_echosounder/2005-167/06162005	4/1	0.00	000.0	Primary

Hydrographer Recommendations

Remove "PA". Otherwise retain as charted.

Cartographically-Rounded Depth (Affected Charts):

13ft (11375_1, 11374_1, 11374_2, 11373_1)

2fm (1115A_1, 11360_1, 11006_1, 411_1)

2fm 1ft (11366_1)

S-57 Data

Geo object 1: Buoy, special purpose/general (BOYSPP)

Attributes: BOYSHP - 2:can (cylindrical)

CATSPM - 18:notice mark

COLOUR - 4:green

INFORM - DP on green can "WR" w/ white light - temporary bouy. Marks charted wreck PA (w/in radii of AWOIS Items 12605 12604).

STATUS - 1:permanent

Geo object 2: Light (LIGHTS)

Attributes: COLOUR - 1:white

INFORM - DP on green can "WR" w/ white light - temporary bouy. Marks charted wreck PA (w/in radii of AWOIS Items 12605 12604).

Office Notes

Chart green can "WR" w/ white light - temporary bouy for AWOIS# 12604, 12605 found remove PA. Defer final charting disposition to MCD/NDB.

1.8) 10-ft Obstn

Survey Summary

Survey Position: 30° 17' 08.0" N, 088° 30' 27.6" W
Least Depth: 3.95 m (= 12.96 ft = 2.160 fm = 2 fm 0.96 ft)
TPU (±1.96σ): **THU (TPEh)** [None] ; **TVU (TPEv)** [None]
Timestamp: 2005-167.17:41:53.000 (06/16/2005)
DP Dataset: h11385_pascagoula_sheet_b / 1211dp_echosounder / 2005-167 / 06162005
Profile/Beam: 7/1
Charts Affected: 11375_1, 11374_1, 11374_2, 11373_1, 11366_1, 1115A_1, 11360_1, 11006_1, 411_1

Remarks:

DP unknown submerged contact. Item has been investigated w/ SBES and determined to be insignificant.

Feature Correlation

Address	Feature	Range	Azimuth	Status
h11385_pascagoula_sheet_b/1211dp_echosounder/2005-167/06162005	7/1	0.00	000.0	Primary

Hydrographer Recommendations

Not to be add to chart. Determined to be insignificant.

Cartographically-Rounded Depth (Affected Charts):

13ft (11375_1, 11374_1, 11374_2, 11373_1)
 2fm (1115A_1, 11360_1, 11006_1, 411_1)
 2fm 1ft (11366_1)

S-57 Data

Geo object 1: Obstruction (OBSTRN)
Attributes: OBJNAM - 10-ft Obstn
 QUASOU - 6:least depth known
 SORDAT - 20050705
 SORIND - US,US,nsurf,H11385
 TECSOU - 1,2:found by echo-sounder,found by side scan sonar
 VALSOU - 3.95 m

VERDAT - 12:Mean lower low water

WATLEV - 3:always under water/submerged

Geo object 2: Sounding (SOUNDG)

Office Notes

Do not concur. Chart 10-ft (10.544-ft(3.214m)) Obstruction located in 30°17'07.806"N, 088°30'26.970"W.

Feature Images

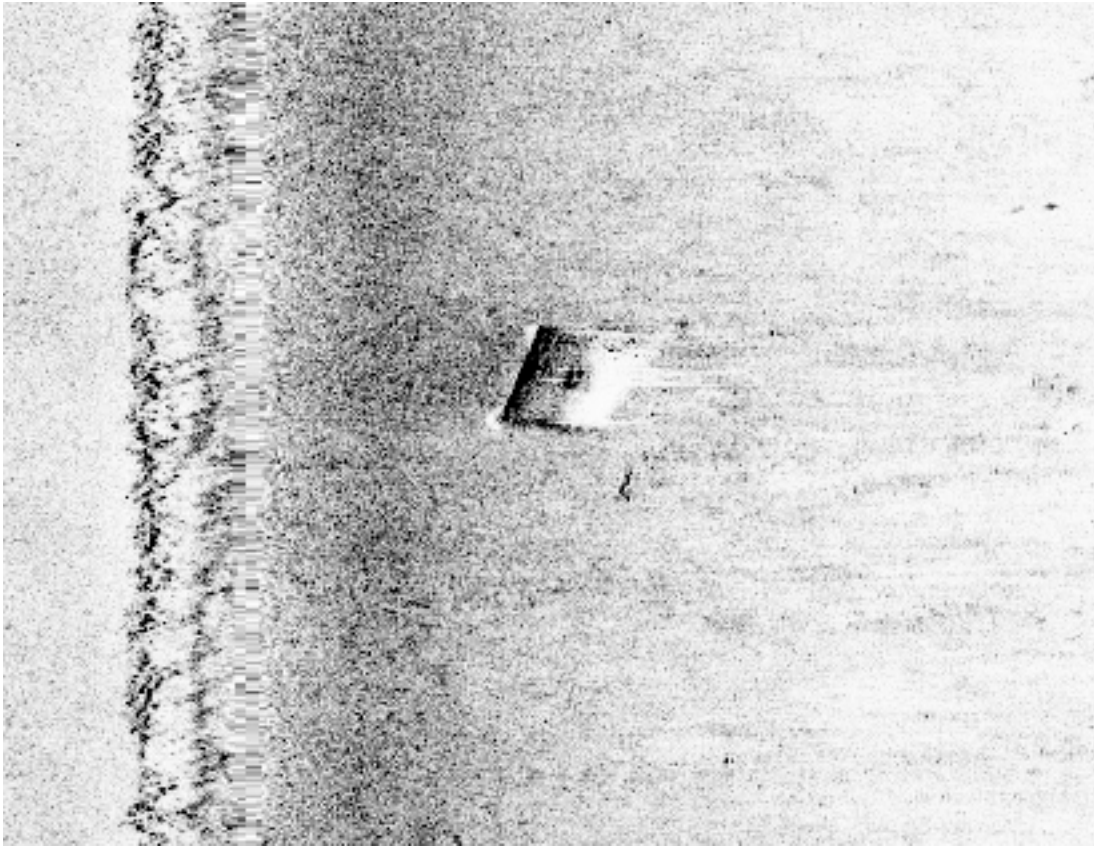


Figure 1.8.1

1.9) AWOIS#12603 Wk PA (disproved)

Survey Summary

Survey Position: 30° 17' 07.1" N, 088° 30' 11.2" W
Least Depth: 3.87 m (= 12.70 ft = 2.116 fm = 2 fm 0.70 ft)
TPU ($\pm 1.96\sigma$): **THU (TPEh)** [None] ; **TVU (TPEv)** [None]
Timestamp: 2005-167.18:00:40.000 (06/16/2005)
DP Dataset: h11385_pascagoula_sheet_b / 1211dp_echosounder / 2005-167 / 06162005
Profile/Beam: 8/1
Charts Affected: 11375_1, 11374_1, 11374_2, 11373_1, 11366_1, 1115A_1, 11360_1, 11006_1, 411_1

Remarks:

DP on AWOIS item 12603.

Feature Correlation

Address	Feature	Range	Azimuth	Status
h11385_pascagoula_sheet_b/1211dp_echosounder/2005-167/06162005	8/1	0.00	000.0	Primary

Hydrographer Recommendations

Recommend to delete charted wreck w/danger curve and chart notation PA. Chart survey soundings within the common area.

Cartographically-Rounded Depth (Affected Charts):

12ft (11375_1, 11374_1, 11374_2, 11373_1)

2fm (1115A_1, 11360_1, 11006_1, 411_1)

2fm 0ft (11366_1)

S-57 Data

Geo object 1: Wreck (WRECKS)
Attributes: CONVIS - 2:not visual conspicuous
 INFORM - DP on AWOIS item 12603.
 TECSOU - 1,2:found by echo-sounder,found by side scan sonar
 VALSOU - 3.87 m
 VERDAT - 12:Mean lower low water
 WATLEV - 3:always under water/submerged

Office Notes

Charted wreck PA considered disproved. Reference AWOIS #12603 for more details. Delete Wreck w/danger curve and PA. Chart soundings within the common area.

1.10) AWOIS #12599 - AWOIS #12599 Obstn PA (Retain)

No Primary Survey Feature for this AWOIS Item

Search Position: 30° 19' 20.7" N, 088° 31' 15.0" W
Historical Depth: [None]
Search Radius: 150
Search Technique: ES,MB,S2,SD,DI,VS
Technique Notes: [None]

History Notes:

LNM 30/87--7/30/87; ADD OBSTRUCTION-UNIDENTIFIED STEEL STRUCTURE AWASH IN 30°19'20"N 88°31'15"W■■■OPR-J376 H-11385 NRT-4■AWOIS Item # 12599 not surveyed due to shallow depths.

Survey Summary

Charts Affected: 11375_1, 11374_2, 11373_1, 11366_1, 1115A_1, 11360_1, 11006_1, 411_1

Remarks:

AWOIS Item # 12599 not surveyed due to shallow depths.

Feature Correlation

Address	Feature	Range	Azimuth	Status
OPR-J376-Pascagoula-AWOIS	AWOIS # 12599	0.00	000.0	Primary

Hydrographer Recommendations

Not surveyed due to shallow depths. Retain as Charted. Obstn PA

S-57 Data

Geo object 1: Obstruction (OBSTRN)
Attributes: QUASOU - 2:depth unknown
 SORDAT - 20020800
 SORIND - US,US_graph,chart 11375
 VERDAT - 12:Mean lower low water
 WATLEV - 3:always under water/submerged

Office Notes

Concur. The feature is outside the surveyed area. Retain as Charted. Obstn PA

1.11) AWOIS #12597 - AWOIS #12597 OBSTN PA Subm piles (Retain)

No Primary Survey Feature for this AWOIS Item

Search Position: 30° 19' 42.7" N, 088° 31' 00.1" W
Historical Depth: [None]
Search Radius: 200
Search Technique: DI,MB,ES,SD,S2
Technique Notes: SEARCH NOT REQUIRED WITHIN SPOIL AREA

History Notes:

LNМ 5/82--"THE VESSEL LITTLE DARLIN PREVIOUSLY REPORTED SUNK IN APPROXIMATE POSITION 30-19.7N, 88-31W APPROXIMATELY ONE HALF MILE SOUTHWEST OF THE MOUTH OF BAYOU CASOTTE HAS BEEN REMOVED, AND AN ANCHOR IS REPORTED TO EXIST IN THE ABOVE POSITION."OB■■■OPR-J376 H-11385 NRT-4■■AWOIS 12597. Not surveyed due to depths too shallow for SSS.

Survey Summary

Charts Affected: 11375_1, 11374_2, 11373_1, 11366_1, 1115A_1, 11360_1, 11006_1, 411_1

Remarks:

Not surveyed due to depths too shallow for SSS.

Feature Correlation

Address	Feature	Range	Azimuth	Status
OPR-J376-Pascagoula-AWOIS	AWOIS # 12597	0.00	000.0	Primary

Hydrographer Recommendations

Retain as charted.

S-57 Data

[None]

Office Notes

Concur. Feature's location is outside the survey area and not addressed. Retain as charted.

1.12) AWOIS #12598 - AWOIS #12598 Obstn "Retain"

No Primary Survey Feature for this AWOIS Item

Search Position: 30° 19' 24.7" N, 088° 30' 49.1" W
Historical Depth: [None]
Search Radius: 150
Search Technique: ES,MB,S2,SD,DI
Technique Notes: [None]

History Notes:

LNM 39/87--"SUBMERGED OBSTRUCTION (PILING - CLEARANCE OVER OBSTRUCTION UNKNOWN) IN 30-19-24N, 88-30-49(PA)"■■■OPR-J376 H-11385 NRT-4■AWOIS item #12598 not found■■■Half of radius surveyed with 200% SSS SBES.■Western half of radius too shallow for SSS.

Survey Summary

Charts Affected: 11375_1, 11374_2, 11373_1, 11366_1, 1115A_1, 11360_1, 11006_1, 411_1

Remarks:

AWOIS item #12598 not found. Half of radius surveyed with 200% SSS SBES. Western half of radius too shallow for SSS.

Feature Correlation

Address	Feature	Range	Azimuth	Status
OPR-J376-Pascagoula-AWOIS	AWOIS # 12598	0.00	000.0	Primary

Hydrographer Recommendations

Only half of radius for AWOIS# 12598 was surveyed. Retain as charted.

S-57 Data

Geo object 1: Obstruction (OBSTRN)
Attributes: OBJNAM - Obstn PA
 QUASOU - 2:depth unknown
 SORDAT - 19870930
 SORIND - US,US,reprt,8thCGD,LNM39/87
 VERDAT - 12:Mean lower low water

WATLEV - 3:always under water/submerged

Office Notes

Concur. Not considered disproved due to incomplete search coverage. Retain as charted.

1.13) AWOIS #12600 - AWOIS #12600 Obstn PA (Retain)

No Primary Survey Feature for this AWOIS Item

Search Position: 30° 19' 13.7" N, 088° 30' 41.1" W
Historical Depth: [None]
Search Radius: 150
Search Technique: MB,ES,S2,SD,DI,VS
Technique Notes: [None]

History Notes:

LNM 42/80--"THE 38FT FISHING VESSEL SEA BEE PREVIOUSLY REPORTED SUNK IN APPROXIMATE POSITION 30-18.2N, 88-30.5W WITH 2FT OF THE VESSEL SHOWING ABOVE WATER HAS BEEN SALVAGED. PORTIONS OF THE VESSEL HAVE BEEN REPORTED IN AN AREA 300 FEET NORTHEAST OF BAYOU CASOTTE LIGHT 8."■■■OPR-J376 H-11385 NRT-4■■■AWOIS #12600. Western half of radius surveyed w/ 200% SSS and SBES. No items found. Hydrographer recommends to remove from AWOIS list.

Survey Summary

Charts Affected: 11375_1, 11374_2, 11373_1, 11366_1, 1115A_1, 11360_1, 11006_1, 411_1

Remarks:

Western half of radius surveyed w/ 200% SSS and SBES. No items found.

Feature Correlation

Address	Feature	Range	Azimuth	Status
OPR-J376-Pascagoula-AWOIS	AWOIS # 12600	0.00	000.0	Primary

Hydrographer Recommendations

Western half of radius surveyed w/ 200% SSS and SBES. Retain as charted.

S-57 Data

Geo object 1: Obstruction (OBSTRN)
Attributes: SORDAT - 19810101
 SORIND - US,US,reprt,8thCGD,LNM 01/81
 WATLEV - 3:always under water/submerged

Office Notes

Concur. Not considered disproved due to incomplete search coverage. Retain as charted.

1.14) AWOIS #12601 - AWOIS # 12601 Obstrn (Retain)

No Primary Survey Feature for this AWOIS Item

Search Position: 30° 19' 00.2" N, 088° 31' 06.5" W
Historical Depth: [None]
Search Radius: 150
Search Technique: MB,ES,S2,SD,DI,VS
Technique Notes: [None]

History Notes:

LNM 26/87--"SUBMERGED OBSTRUCTION (STEEL BUOY) IN 30-18-36N, 88-30-54W(PA)"■■■ LNM 49/87--"RELOCATE SUBMERGED OBSTRUCTION (STEEL BOUY) 30-18-36N, 88-30-54W(PA) TO 30-18-59.5N, 88-31-06.5W(PA)"■■■OPR-J376 H-11385 NRT-4■■AWOIS #12601 Item not surveyed due to shallow depths.

Survey Summary

Charts Affected: 11375_1, 11374_2, 11373_1, 11366_1, 1115A_1, 11360_1, 11006_1, 411_1

Remarks:

Item not surveyed due to shallow depths.

Feature Correlation

Address	Feature	Range	Azimuth	Status
OPR-J376-Pascagoula-AWOIS	AWOIS # 12601	0.00	000.0	Primary

Hydrographer Recommendations

Item not surveyed due to shallow depths. Retain as charted.

S-57 Data

Geo object 1: Obstruction (OBSTRN)
Attributes: OBJNAM - Obstrn PA
 QUASOU - 2:depth unknown
 SORDAT - 19871201
 SORIND - US,US,reprt,8thCGD,LNM 49/87
 VERDAT - 12:Mean lower low water

WATLEV - 3:always under water/submerged

Office Notes

Concur. Charted feature is located outside of the survey area and not addressed by the survey. Retain as charted.

1.15) AWOIS #12602 - AWOIS #12602 Subm pipe ED (Retain)

No Primary Survey Feature for this AWOIS Item

Search Position: 30° 18' 01.7" N, 088° 31' 33.0" W
Historical Depth: [None]
Search Radius: 150
Search Technique: MB,ES,S2,S4,SD,DI,VS
Technique Notes: [None]

History Notes:

LNM 51/84--"A 36IN STEEL PIPE 25FT IN LENGTH HAS BEEN REPORTED PARTIALLY SUBMERGED MIDWAY BETWEEN BUOY NUMBERS 34 AND 36, APPROXIMATELY 50FT NORTH OF THE CHANNEL IN APPROXIMATE POSITION 30-18-01N, 88-31-33W AND IS NOT MARKED." ■ LNM 5/85--"THE 36IN STEEL PIPE 25FT IN LENGTH, PREVIOUSLY REPORTED PARTIALLY SUBMERGED MIDWAY BETWEEN BUOY 34 AND 36, APPROXIMATELY 50FT NORTH OF THE CHANNEL IN APPROXIMATE POSITION 30-18-01N, 88-31-33W, COULD NOT BE FOUND." ■■■ OPR-376 H-11385 NRT-4 ■ AWOIS item #12602 not found. ■ Most of radius surveyed with 200% SSS and SBES. Eastern 1/4 not surveyed due to shallow depth. ■ Remove "Subm pipe ED" from chart.

Survey Summary

Charts Affected: 11375_1, 11374_1, 11374_2, 11373_1, 11366_1, 1115A_1, 11360_1, 11006_1, 411_1

Remarks:

AWOIS item #12602 not found. Most of radius surveyed with 200% SSS and SBES. Eastern 1/4 not surveyed due to shallow depth.

Feature Correlation

Address	Feature	Range	Azimuth	Status
OPR-J376-Pascagoula-AWOIS	AWOIS # 12602	0.00	000.0	Primary

Hydrographer Recommendations

Not all of the radius was survey for AWOIS# 12602. Retain as chated.

S-57 Data

Geo object 1: Obstruction (OBSTRN)
Attributes: CATOBS - 1:snag / stump
 OBJNAM - Subm pipe ED
 SORDAT - 19841201

SORIND - US,US,reprt,8thCGD,LNM 51/84

WATLEV - 3:always under water/submerged

Office Notes

Concur with clarification. Side Scan mosaic indicates the search area was complete. However, the poor data quality can not be interpreted adequately in order to consider the feature's existence or for disproval. Recommend to retain the charted Subm pipe ED.

1.16) AWOIS #12603 - AWOIS #12603 Wk PA (Disproved)

No Primary Survey Feature for this AWOIS Item

Search Position: 30° 17' 06.7" N, 088° 30' 12.0" W
Historical Depth: [None]
Search Radius: 200
Search Technique: MB,ES,S2,SD,DI,VS
Technique Notes: SEARCH NOT REQUIRED WITHIN SPOIL AREA

History Notes:

LNМ 49/85--"THE 56FT F/V BLUE SEAS HAS BEEN REPORTED SUNK APPROXIMATELY 1/2 MILE EAST OF PASCAGOULA CHANNEL BUOY 30(LLP 196), IN APPROXIMATELY 12 FEET OF WATER WITH 2 FEET OF WATER OVER THE WRECK, IN APPROXIMATE POSITION 30-17-06N, 88-30-12W."■■■OPR- J376 H-11385 NRT-4■■AWOIS item # 12603 'BLUE SEAS' Search criteria met w/ 200% SSS and SBES w/in surveyable area. Contacts found and investigated w/ SBES. Chart obstruction.

Survey Summary

Charts Affected: 11375_1, 11374_1, 11374_2, 11373_1, 11366_1, 1115A_1, 11360_1, 11006_1, 411_1

Remarks:

Search criteria met w/ 200% SSS and SBES w/in surveyable area. Contacts found and investigated w/ SBES.

Feature Correlation

Address	Feature	Range	Azimuth	Status
OPR-J376-Pascagoula-AWOIS	AWOIS # 12603	0.00	000.0	Primary

Hydrographer Recommendations

Contacts found and investigated w/ SBES, but insignificant. Remove Wreck w/danger curve and PA, use soundings in common area.

S-57 Data

Geo object 1: Sounding (SOUNDG)
Geo object 2: Wreck (WRECKS)

Office Notes

Concur. Consider Wreck PA disproved by side scan sonar. Chart survey depths within the common area. Recommend to delete charted dangerous Wreck PA from chart.

1.17) AWOIS #12605 - AWOIS #12605 Reference 5ft Wk 151/1

No Primary Survey Feature for this AWOIS Item

Search Position: 30° 16' 50.0" N, 088° 31' 08.0" W
Historical Depth: [None]
Search Radius: 100
Search Technique: MB,ES,S2,SD,DI,VS
Technique Notes: SEARCH NOT REQUIRED WITHIN SPOIL AREA

History Notes:

LNМ 43/94--"SYMBOL: VISIBLE WRECK (PA) 30 16 50.0N, 88 31 08.0W" ■ ■ LNМ 14/95--"SUBSTITUTE VISIBLE WRECK (PA) WITH DANGEROUS WRECK (PA) IN 30 16 50.0N, 88 31 08.0W" ■ ■ OPR-J363 H-11385 NRT4-04 ■ AWOIS #12605. Search criteria met w/ 200% SSS and SBES w/in surveyable area. Contacts found and investigated w/ SBES.

Survey Summary

Charts Affected: 11375_1, 11374_1, 11374_2, 11373_1, 11366_1, 1115A_1, 11360_1, 11006_1, 411_1

Remarks:

Search criteria met w/ 200% SSS and SBES w/in surveyable area. Contacts found and investigated w/ SBES.

Feature Correlation

Address	Feature	Range	Azimuth	Status
OPR-J376-Pascagoula-AWOIS	AWOIS # 12605	0.00	000.0	Primary

Hydrographer Recommendations

Chart obstruction.

S-57 Data

Geo object 1: Obstruction (OBSTRN)
Geo object 2: Sounding (SOUNDG)

Office Notes

Chart; See AWOIS #12605 5-ft Wk (151/1) for description and results.

1.18) AWOIS #12606 - AWOIS #12606 Visible Wk PA (Retain)

No Primary Survey Feature for this AWOIS Item

Search Position: 30° 16' 49.2" N, 088° 30' 09.0" W
Historical Depth: [None]
Search Radius: 150
Search Technique: MB,ES,S2,SD,DI,VS
Technique Notes: [None]

History Notes:

LNM 42/94--"ADD SYMBOL VISIBLE WRECK (PA) (67FT F/V CHRISTINE LYNN) 30 16 49.2N, 88 30 09.0W"■■■OPR-J376 H-11385 NRT-4■AWOIS #12606 radius mostly surveyed w/ 200% SSS SBES.■Item not found. Remove from chart.

Survey Summary

Charts Affected: 11375_1, 11374_1, 11374_2, 11373_1, 11366_1, 1115A_1, 11360_1, 11006_1, 411_1

Remarks:

AWOIS #12606 radius mostly surveyed w/ 200% SSS SBES. Item not found.

Feature Correlation

Address	Feature	Range	Azimuth	Status
OPR-J376-Pascagoula-AWOIS	AWOIS # 12606	0.00	000.0	Primary

Hydrographer Recommendations

Radius mostly surveyed w/ 200% SSS SBES. The complete radius wasn't survey therefore. Retain as charted.

S-57 Data

Geo object 1: Wreck (WRECKS)
Attributes: CATWRK - 5:wreck showing any portion of hull or superstructure
 CONVIS - 1:visual conspicuous
 OBJNAM - 20.42 meters/67 feet F/V Christine Lynn
 QUASOU - 2:depth unknown
 SORDAT - 19941018
 SORIND - US,US,reprt,8thCGD,LNM 42/94

WATLEV - 1:partly submerged at high water

Office Notes

Search radius incomplete, thus the feature was not disproved. Field records do not contain any notes related to the visible wreck as to whether the feature is visible or not. Recommend to retain Wreck PA as charted.

1.19) AWOIS #12604 9ft Obstn 251/1**Survey Summary**

Survey Position: 30° 16' 53.1" N, 088° 31' 08.8" W
Least Depth: 2.79 m (= 9.16 ft = 1.527 fm = 1 fm 3.16 ft)
TPU ($\pm 1.96\sigma$): **THU (TPEh)** [None] ; **TVU (TPEv)** [None]
Timestamp: 2005-167.16:34:54.938 (06/16/2005)
Survey Line: h11385 / 1211sb / 2005-167 / 099a1634
Profile/Beam: 251/1
Charts Affected: 11375_1, 11374_1, 11374_2, 11373_1, 11366_1, 1115A_1, 11360_1, 11006_1, 411_1

Remarks:

Least depth acquired from SBES bathy.

Obstruction located w/ SSS SBES. Investigated w/ SBES. AWOIS item #12604.

Feature Correlation

Address	Feature	Range	Azimuth	Status
h11385/1211sb/2005-167/099a1634	251/1	0.00	000.0	Primary
h11385/1211sss500k/2005-066/p050307203400	0003	3.61	245.9	Secondary

Hydrographer Recommendations

Add Obstn. to chart.

Cartographically-Rounded Depth (Affected Charts):

9ft (11375_1, 11374_1, 11374_2, 11373_1)

1 ½fm (1115A_1, 11360_1, 11006_1, 411_1)

1fm 3ft (11366_1)

S-57 Data

Geo object 1: Obstruction (OBSTRN)
Attributes: OBJNAM - AWOIS item #12604 Unknown OBSTN
 QUASOU - 6:least depth known
 SORDAT - 20050705
 SORIND - US,US,nsurf,H11385

TECSOU - 1,2:found by echo-sounder,found by side scan sonar

VALSOU - 2.792 m

VERDAT - 12:Mean lower low water

WATLEV - 3:always under water/submerged

Office Notes

Chart 9ft Obsn at the surveyed location. Update AWOIS database for item #12604.

1.20) 12ft Obstn 188/1**Survey Summary**

Survey Position: 30° 16' 54.6" N, 088° 30' 35.4" W
Least Depth: 3.60 m (= 11.82 ft = 1.970 fm = 1 fm 5.82 ft)
TPU ($\pm 1.96\sigma$): **THU (TPEh)** [None]; **TVU (TPEv)** [None]
Timestamp: 2005-167.16:57:43.730 (06/16/2005)
Survey Line: h11385 / 1211sb / 2005-167 / 121_1657
Profile/Beam: 188/1
Charts Affected: 11375_1, 11374_1, 11374_2, 11373_1, 11366_1, 1115A_1, 11360_1, 11006_1, 411_1

Remarks:

Bathy feature determined to be least depth on dp 4893

Feature Correlation

Address	Feature	Range	Azimuth	Status
h11385/1211sb/2005-167/121_1657	188/1	0.00	000.0	Primary
h11385/1211sss500k/2005-025/p050125071400	0002	3.36	229.7	Secondary
h11385/3001sss500k/2005-082/p050323181200	0003	5.08	261.9	Secondary

Hydrographer Recommendations

Add to chart.

Cartographically-Rounded Depth (Affected Charts):

12ft (11375_1, 11374_1, 11374_2, 11373_1)

2fm (1115A_1, 11360_1, 11006_1, 411_1)

2fm 0ft (11366_1)

S-57 Data

Geo object 1: Obstruction (OBSTRN)
Attributes: OBJNAM - 12-ft Obstn
 QUASOU - 6:least depth known
 SORDAT - 20050705
 SORIND - US,US,nsurf,H11385

TECSOU - 1,2:found by echo-sounder,found by side scan sonar

VALSOU - 3.603 m

VERDAT - 12:Mean lower low water

WATLEV - 3:always under water/submerged

Office Notes

Chart 12ft Obsn at the surveyed location.

Feature Images

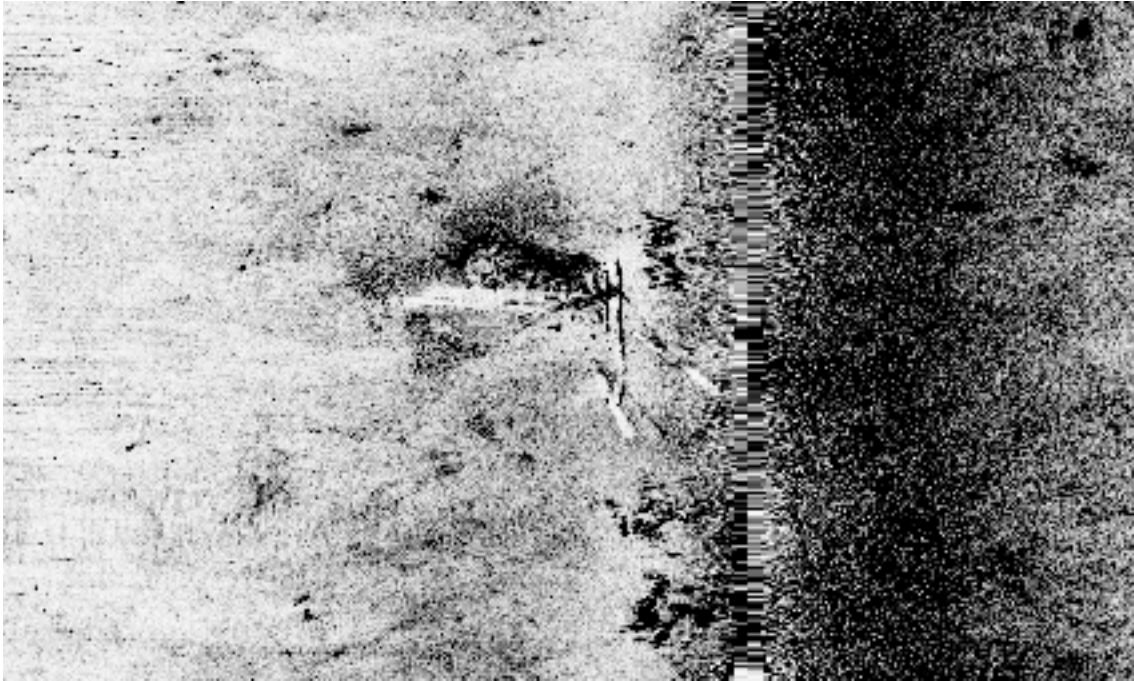


Figure 1.20.1

1.21) 11ft Wk 225/1**Survey Summary**

Survey Position: 30° 15' 56.1" N, 088° 30' 58.1" W
Least Depth: 3.44 m (= 11.28 ft = 1.880 fm = 1 fm 5.28 ft)
TPU ($\pm 1.96\sigma$): **THU (TPEh)** [None]; **TVU (TPEv)** [None]
Timestamp: 2005-167.14:15:06.861 (06/16/2005)
Survey Line: h11385 / 1211sb / 2005-167 / 184_1414
Profile/Beam: 225/1
Charts Affected: 11375_1, 11374_1, 11373_1, 11366_1, 1115A_1, 11360_1, 11006_1, 411_1

Remarks:

Bathy feature on wreck found w/ 200% SSS SBES. Investigated w/ SBES.

Feature Correlation

Address	Feature	Range	Azimuth	Status
h11385/1211sb/2005-167/184_1414	225/1	0.00	000.0	Primary
h11385/1211sss500k/2005-066/p050307202100	0001	1.63	222.8	Secondary
h11385/1211sss500k/2005-066/p050307202100	0002	2.45	066.2	Secondary

Hydrographer Recommendations

add to chart

Cartographically-Rounded Depth (Affected Charts):

11ft (11375_1, 11374_1, 11373_1)

1 ¾fm (1115A_1, 11360_1, 11006_1, 411_1)

1fm 5ft (11366_1)

S-57 Data

Geo object 1: Wreck (WRECKS)
Attributes: CATWRK - 2:dangerous wreck
 OBJNAM - 11-ft Wreck
 QUASOU - 6:least depth known
 SORDAT - 20050705

SORIND - US,US,nsurf,H11385

TECSOU - 1,2:found by echo-sounder,found by side scan sonar

VALSOU - 3.439 m

VERDAT - 12:Mean lower low water

WATLEV - 3:always under water/submerged

Office Notes

Chart dangerous Wk with least depth of 11-ft at the surveyed location.

Feature Images

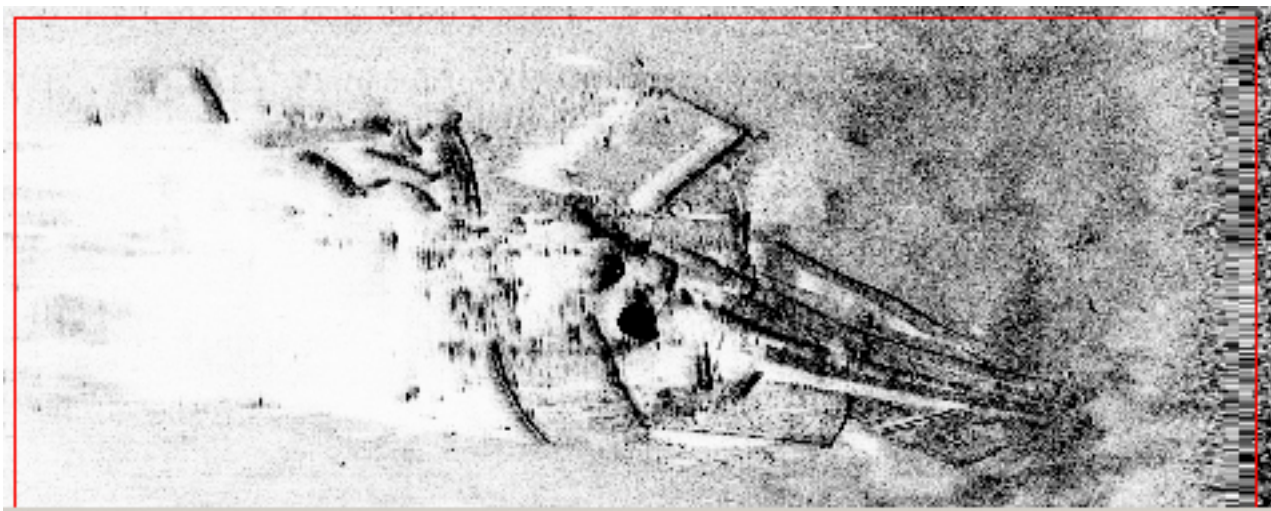


Figure 1.21.1

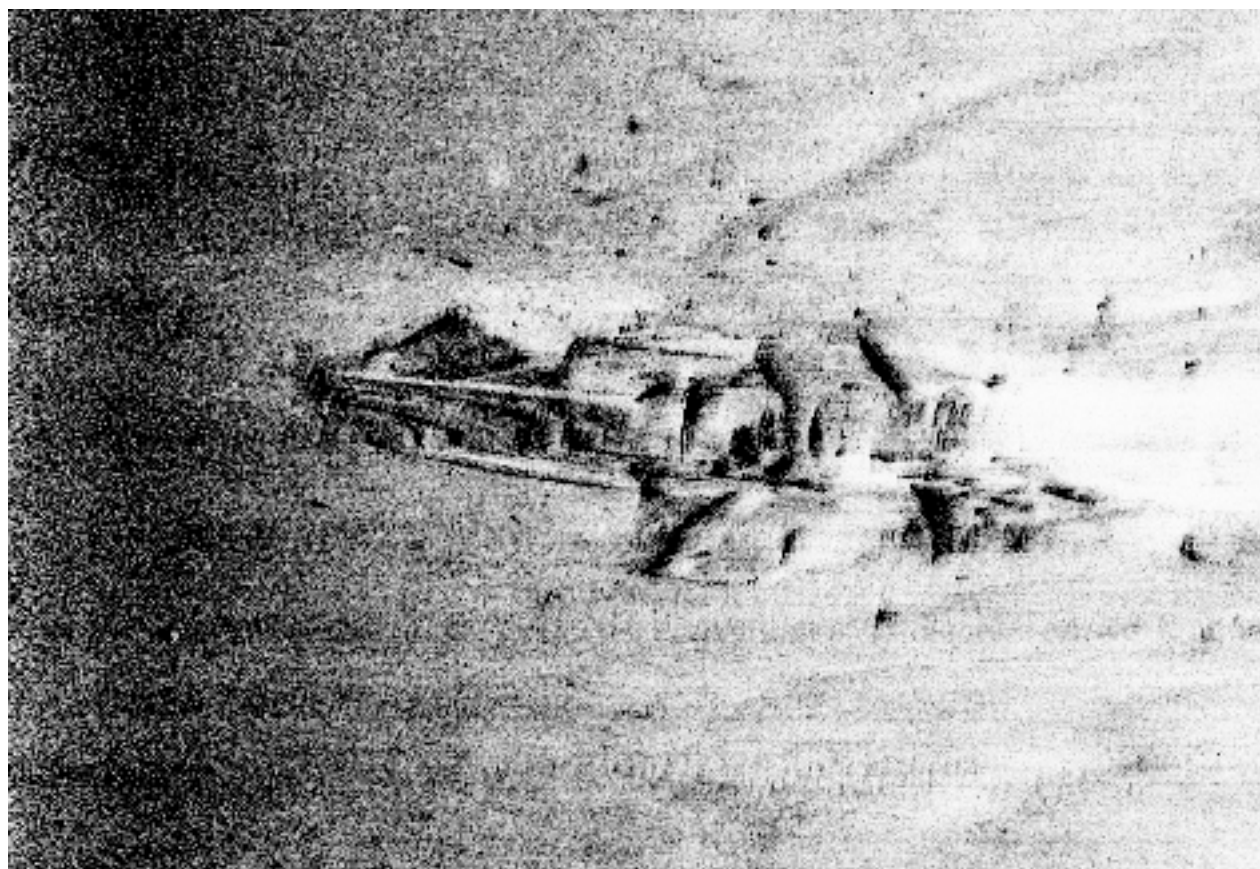


Figure 1.21.2

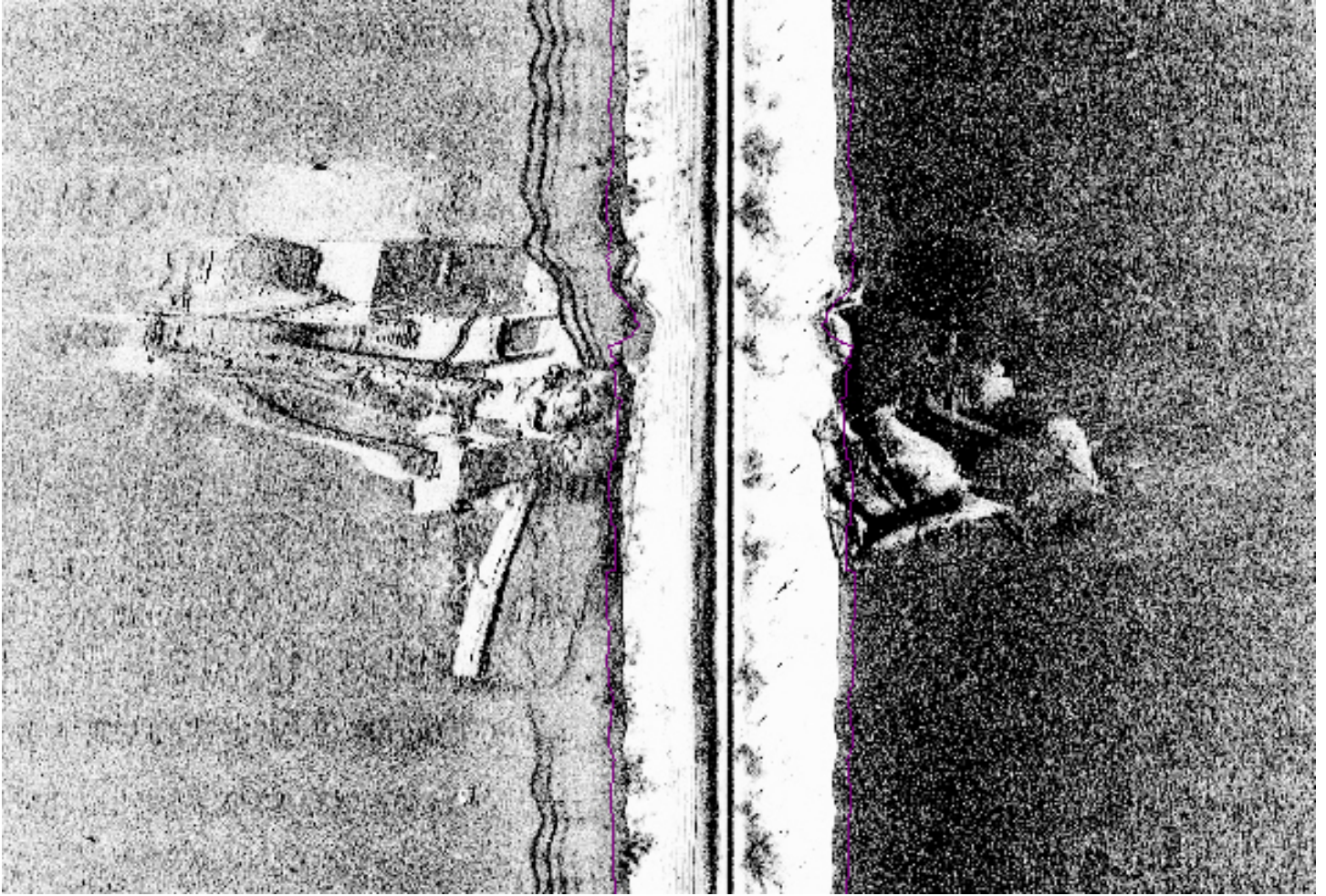


Figure 1.21.3

1.22) AWOIS #12605 5ft Wk 151/1**Primary Feature for AWOIS Item #12604**

Search Position: 30° 16' 50.8" N, 088° 31' 08.1" W
Historical Depth: [None]
Search Radius: 100
Search Technique: MB,ES,S2,SD,DI,VS
Technique Notes: SEARCH NOT REQUIRED WITHIN SPOIL AREA

History Notes:

LNM 28/95--7/11/95; RELOCATE "SUBMERGED OBSTRUCTION SYMBOL (PA)" TO 30°16'50.8"N 88°31'08.1"W. ■■■OPR-J376 H-11385 NRT-4■■AWOIS #12604 Search criteria met w/ 200% SSS and SBES w/in surveyable area. Contacts found and investigated w/ SBES.

Survey Summary

Survey Position: 30° 16' 51.4" N, 088° 31' 08.2" W
Least Depth: 1.69 m (= 5.54 ft = 0.924 fm = 0 fm 5.54 ft)
TPU (±1.96σ): THU (TPEh) [None] ; TVU (TPEv) [None]
Timestamp: 2005-167.16:24:53.424 (06/16/2005)
Survey Line: h11385 / 1211sb / 2005-167 / 108_1624
Profile/Beam: 151/1
Charts Affected: 11375_1, 11374_1, 11374_2, 11373_1, 11366_1, 1115A_1, 11360_1, 11006_1, 411_1

Remarks:

Least depth on AWOIS item #12605 as determined from SBES bathy.

Feature Correlation

Address	Feature	Range	Azimuth	Status
h11385/1211sb/2005-167/108_1624	151/1	0.00	000.0	Primary
h11385/1211sss500k/2005-069/p050310203800	0001	7.51	219.3	Secondary
h11385/1211sss500k/2005-066/p050307203400	0001	9.00	350.3	Secondary
OPR-J376-Pascagoula-AWOIS	AWOIS # 12604	18.11	355.1	Secondary

Hydrographer Recommendations

Remove "PA" ,otherwise exists as charted.

Cartographically-Rounded Depth (Affected Charts):

5ft (11375_1, 11374_1, 11374_2, 11373_1)

0 ¾fm (1115A_1, 11360_1, 11006_1, 411_1)

0fm 5ft (11366_1)

S-57 Data

Geo object 1: Wreck (WRECKS)

Attributes: CATWRK - 2:dangerous wreck

OBJNAM - 5-ft Wreck AWOIS #12605

QUASOU - 6:least depth known

SORDAT - 20050705

SORIND - US,US,nsurf,H11385

TECSOU - 1,2:found by echo-sounder,found by side scan sonar

VALSOU - 1.689 m

VERDAT - 12:Mean lower low water

WATLEV - 3:always under water/submerged

Office Notes

Concur. Chart 5ft Wk w/danger curve (AWOIS #12605) at the surveyed location. Recommend to delete the chart notation "PA".

Feature Images

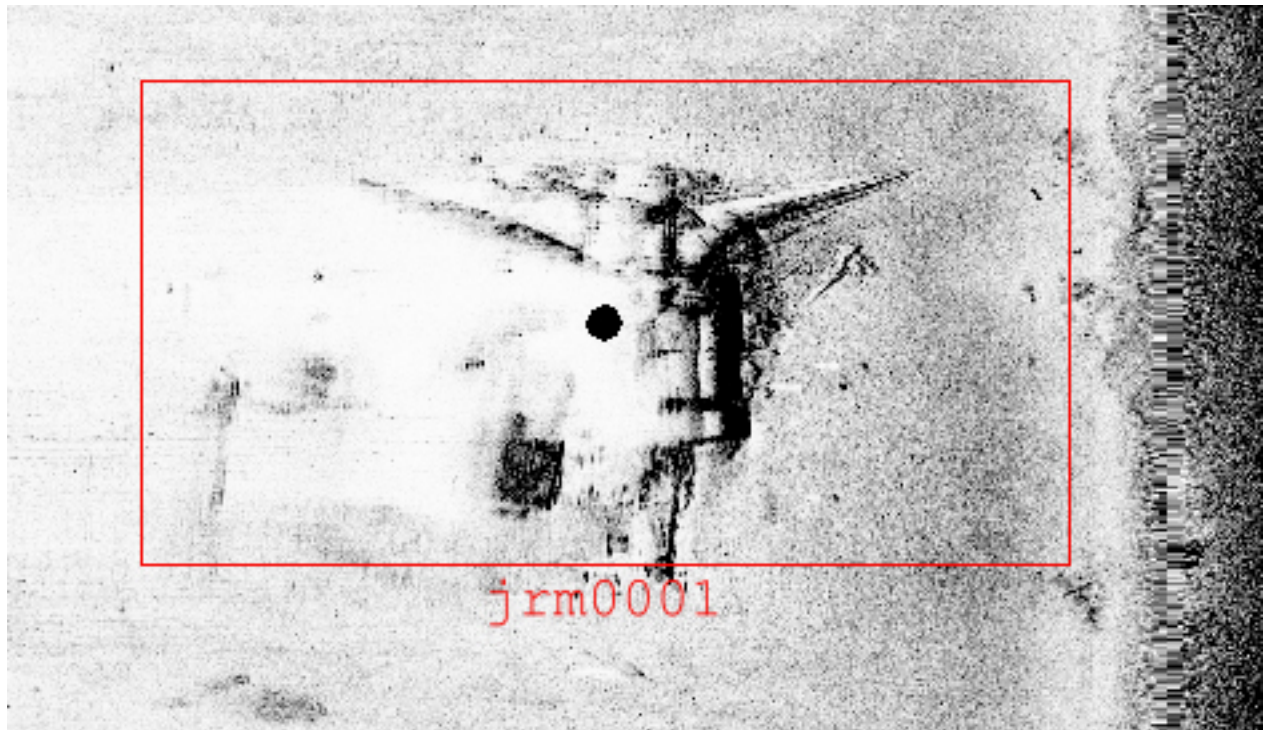


Figure 1.22.1

1.23) 13ft Obstrn 230/1

Survey Summary

Survey Position: 30° 16' 30.2" N, 088° 30' 51.0" W
Least Depth: 4.08 m (= 13.38 ft = 2.230 fm = 2 fm 1.38 ft)
TPU ($\pm 1.96\sigma$): **THU (TPEh)** [None]; **TVU (TPEv)** [None]
Timestamp: 2005-167.15:43:58.998 (06/16/2005)
Survey Line: h11385 / 1211sb / 2005-167 / 142_1543
Profile/Beam: 230/1
Charts Affected: 11375_1, 11374_1, 11374_2, 11373_1, 11366_1, 1115A_1, 11360_1, 11006_1, 411_1

Remarks:

Least depth as determined from SBES bathy data.

Feature Correlation

Address	Feature	Range	Azimuth	Status
h11385/1211sb/2005-167/142_1543	230/1	0.00	000.0	Primary
h11385/1211sss500k/2005-069/p050310182000	0003	2.96	144.7	Secondary
h11385/1211sss500k/2005-066/p050307180900	0004	3.93	002.1	Secondary

Hydrographer Recommendations

Hydrographer recommends adding obstruction to chart.

Cartographically-Rounded Depth (Affected Charts):

13ft (11375_1, 11374_1, 11374_2, 11373_1)

2 ¼fm (1115A_1, 11360_1, 11006_1, 411_1)

2fm 1ft (11366_1)

S-57 Data

Geo object 1: Obstruction (OBSTRN)
Attributes: NINFOM - Least depth as determined from SBES bathy data.
 SORDAT - 20050505
 SORIND - US,US,nsurf,H11385
 TECSOU - 1,2:found by echo-sounder,found by side scan sonar

VALSOU - 4.079 m

VERDAT - 12:Mean lower low water

WATLEV - 3:always under water/submerged

Office Notes

Chart 13ft Obsn w/danger curve at the surveyed location.

Feature Images

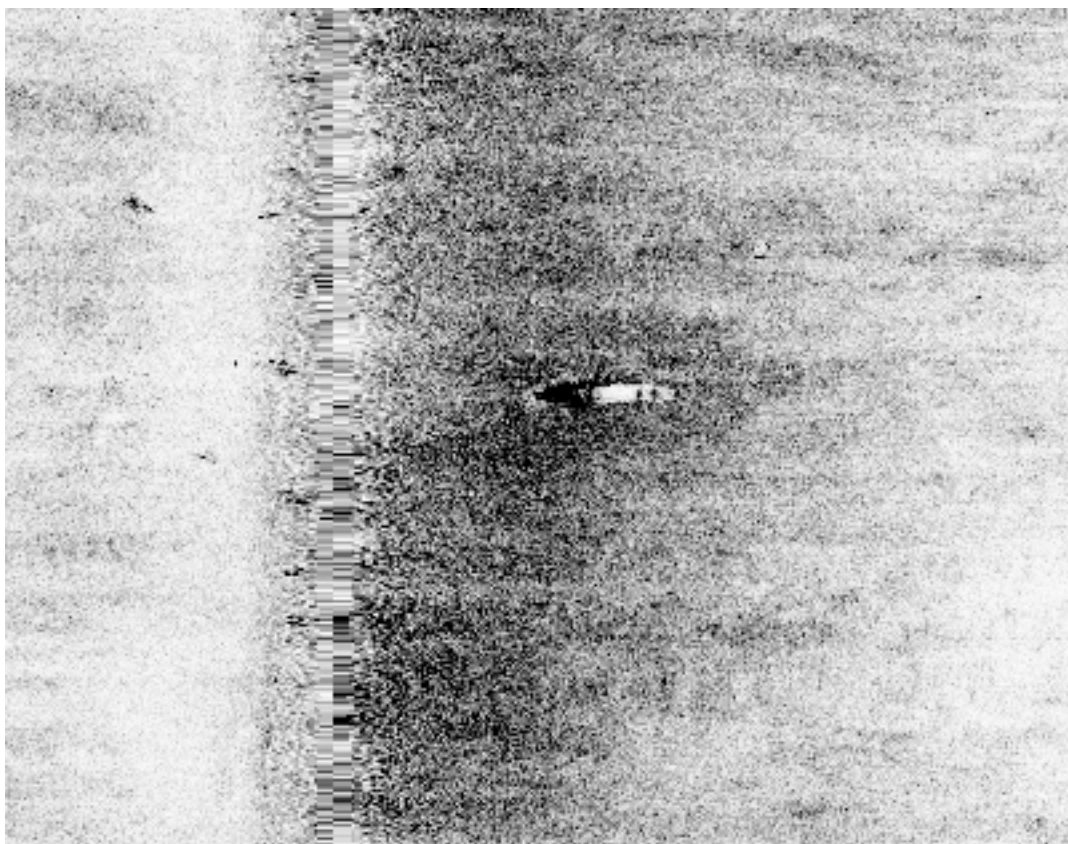


Figure 1.23.1



Figure 1.23.2

1.24) Rear Range "D" (Revise)

Survey Summary

Survey Position: 30° 15' 47.3" N, 088° 30' 46.7" W
Least Depth: [None]
TPU ($\pm 1.96\sigma$): **THU (TPEh)** [None] ; **TVU (TPEv)** [None]
Timestamp: 2005-186.14:52:33.000 (07/05/2005)
DP Dataset: h11385_pascagoula_sheet_b / 3001dp_non_echosounder / 2005-186 / sheet_b_07052005
Profile/Beam: 2/1
Charts Affected: 11375_1, 11374_1, 11373_1, 11366_1, 1115A_1, 11360_1, 11006_1, 411_1

Remarks:

Rear Range "D". Exposed 18 m. USCG LL # 6935. Surveyed position located 50m North of charted position - serves intended purpose.

Feature Correlation

Address	Feature	Range	Azimuth	Status
h11385_pascagoula_sheet_b/3001dp_non_echosounder/2005-186/sheet_b_07052005	2/1	0.00	000.0	Primary

Hydrographer Recommendations

Hydrographer recommends relocating charted position to surveyed position.

S-57 Data

Geo object 1: Beacon, special purpose/general (BCNSPP)
Attributes: BCNSHP - 3:beacon tower
 CATSPM - 42:control mark
 HEIGHT - 18 m
 INFORM - Rear Range "D". Exposed 18 m. USCG LL # 6935. Surveyed position located 50m North of charted position - serves intended purpose.
 STATUS - 1:permanent
 VERDAT - 12:Mean lower low water

Geo object 2: Light (LIGHTS)
Attributes: CATLIT - 13:rear
 COLOUR - 1:white

HEIGHT - 20 m

INFORM - Rear Range "D". Exposed 18 m. USCG LL # 6935. Surveyed position located 50m North of charted position - serves intended purpose.

LITCHR - 7:isophased

STATUS - 1:permanent

Office Notes

Concur. Feature excluded from H11385 H-Cell as per H-Cell specifications.

1.25) Charted Wk ED (disproved)

Survey Summary

Survey Position: 30° 17' 14.5" N, 088° 30' 51.5" W
Least Depth: [None]
TPU ($\pm 1.96\sigma$): **THU (TPEh)** [None] ; **TVU (TPEv)** [None]
Timestamp: 2009-092.15:14:36 (04/02/2009)
GP Dataset: ChartGPs - Digitized
GP No.: 1
Charts Affected: 11375_1, 11374_1, 11374_2, 11373_1, 11366_1, 1115A_1, 11360_1, 11006_1, 411_1

Remarks:

[None]

Feature Correlation

Address	Feature	Range	Azimuth	Status
ChartGPs - Digitized	1	0.00	000.0	Primary

Hydrographer Recommendations

[None]

S-57 Data

[None]

Office Notes

No recommendations made by field unit. Charted Wreck ED considered disproved by 200% side scan sonar. Recommend to deleted the Wreck ED from the chart.

1.26) Subm Pile PA (retain)

Survey Summary

Survey Position: 30° 16' 48.1" N, 088° 30' 30.0" W
Least Depth: [None]
TPU ($\pm 1.96\sigma$): **THU (TPEh)** [None] ; **TVU (TPEv)** [None]
Timestamp: 2009-096.12:23:57 (04/06/2009)
GP Dataset: ChartGPs - Digitized
GP No.: 2
Charts Affected: 11375_1, 11374_1, 11374_2, 11373_1, 11366_1, 1115A_1, 11360_1, 11006_1, 411_1

Remarks:

[None]

Feature Correlation

Address	Feature	Range	Azimuth	Status
ChartGPs - Digitized	2	0.00	000.0	Primary

Hydrographer Recommendations

[None]

S-57 Data

Geo object 1: Obstruction (OBSTRN)
Attributes: CATOBS - 1:snag / stump
 INFORM - Pile
 OBJNAM - Subm pile PA
 QUASOU - 2:depth unknown
 SORDAT - 20001114
 SORIND - US,US,reprt,8thCGD,LNM 46/00
 WATLEV - 3:always under water/submerged

Office Notes

Field records contained no information concerning charted submerged pile PA. Side scan sonar records do not allow for disproval. SS records contains surface noise and water column disturbances. Can not disprove the existence of pile based upon poor record quality. Recommend to retain submerged pile PA as charted.

1.27) Charted Subm pile PA

Survey Summary

Survey Position: 30° 18' 12.8" N, 088° 30' 35.8" W
Least Depth: [None]
TPU ($\pm 1.96\sigma$): **THU (TPEh)** [None] ; **TVU (TPEv)** [None]
Timestamp: 2009-096.12:44:20 (04/06/2009)
GP Dataset: ChartGPs - Digitized
GP No.: 3
Charts Affected: 11375_1, 11374_1, 11374_2, 11373_1, 11366_1, 1115A_1, 11360_1, 11006_1, 411_1

Remarks:

[None]

Feature Correlation

Address	Feature	Range	Azimuth	Status
ChartGPs - Digitized	3	0.00	000.0	Primary

Hydrographer Recommendations

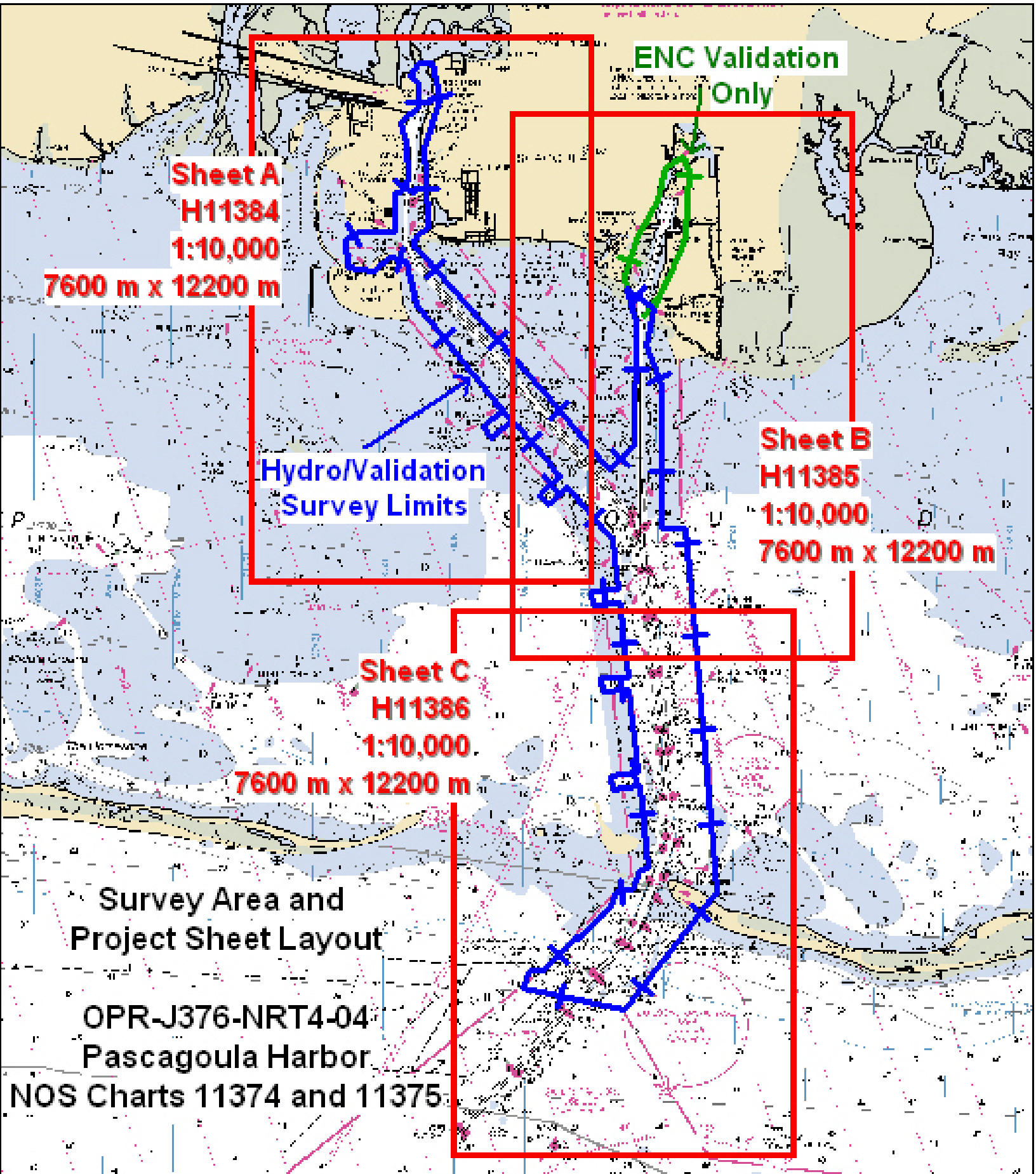
[None]

S-57 Data

Geo object 1: Obstruction (OBSTRN)
Attributes: CATOBS - 1:snag / stump
 OBJNAM - Subm pile PA
 QUASOU - 2:depth unknown
 SORDAT - 19900801
 SORIND - US,US,reprt,8thCGD,LNM 35/80
 VERDAT - 12:Mean lower low water
 WATLEV - 3:always under water/submerged

Office Notes

Not discussed nor investigated by the field unit. No side scan sonar coverage within the common area. Recommend to retain charted submerged pile PA as charted.



**ENC Validation
Only**

**Sheet A
H11384
1:10,000
7600 m x 12200 m**

**Hydro/Validation
Survey Limits**

**Sheet B
H11385
1:10,000
7600 m x 12200 m**

**Sheet C
H11386
1:10,000
7600 m x 12200 m**

**Survey Area and
Project Sheet Layout**

**OPR-J376-NRT4-04
Pascagoula Harbor**

NOS Charts 11374 and 11375

July 22, 2005

MEMORANDUM FOR: Chief, Requirements and Development Division, N/OPS1

FROM: Mark McMann, NRT1, 4

SUBJECT: Request for Approved Tides/Water Levels

Please provide the following data:

1. Tide Note
2. Final zoning in MapInfo and .MIX format
3. Six Minute Water Level data (Co-ops web site)

Transmit data to:

NOAA/NOS/Atlantic Hydrographic Branch
N/CS33, Building #2
439 West York Street
Norfolk, VA 23510
ATTN: Chief AHB

These data are required for the processing of the following hydrographic survey:

Project No.: OPR-J376-NRT4-04
Registry No.: H-11385
State: Ms
Locality: Mississippi Sound
Sublocality: Bayou Cassotte to Lower Pascagoula Channel

Attachments containing:

- 1) an Abstract of Times of Hydrography,
- 2) digital MID MIF files of the track lines from pydro on CD/diskette

cc: N/CS33

Year_DOY	Min Time	Max Time
2005_012	12:51:42	13:31:01
2005_020	15:45:49	16:17:12
2005_024	16:23:21	20:24:03
2005_025	16:38:43	19:28:24
2005_066	16:55:12	20:45:25
2005_068	15:07:04	16:59:22
2005_069	15:05:18	20:50:16
2005_073	18:17:54	20:20:36
2005_074	15:36:59	17:05:48
2005_080	15:44:12	16:20:35
2005_082	15:09:25	18:26:47
2005_089	19:12:05	20:06:09
2005_094	15:14:46	18:00:44
2005_117	18:32:39	19:21:41
2005_167	13:55:38	19:03:26
2005_171	17:38:00	20:28:01
2005_186	14:44:54	15:44:12



UNITED STATES DEPARTMENT OF COMMERCE
National Oceanic and Atmospheric Administration
National Ocean Service
Silver Spring, Maryland 20910

TIDE NOTE FOR HYDROGRAPHIC SURVEY

DATE : October 11, 2005

HYDROGRAPHIC BRANCH: Atlantic Hydrographic Branch
HYDROGRAPHIC PROJECT: OPR-J376-NRT4-2004
HYDROGRAPHIC SHEET: H11385

LOCALITY: Bayou Cassotte to Lower Pascagoula Channel, MS
TIME PERIOD: January 12 - July 5, 2005>

TIDE STATION USED: Pascagoula Point, MS 874-1196
Lat. 30 20.4' N Long. 088 32.0' W
PLANE OF REFERENCE (MEAN LOWER LOW WATER): 0.000 meters
HEIGHT OF HIGH WATER ABOVE PLANE OF REFERENCE: 0.442 meters


TIDE STATION USED: Horn Island, MS 874-2221
Lat. 30 14.3' N Long. 088 40.0' W
PLANE OF REFERENCE (MEAN LOWER LOW WATER): 0.000 meters
HEIGHT OF HIGH WATER ABOVE PLANE OF REFERENCE: 0.456 meters

REMARKS: RECOMMENDED ZONING
Use zone(s) identified as: CGM65A

Refer to attachments for zoning information.

Note 1: Provided time series data are tabulated in metric units (meters), relative to MLLW and on Greenwich Mean Time on the 1983-2001 National Tidal Datum Epoch (NTDE).

Note 2: Use tide data from the appropriate station with applicable zoning correctors for each zone according to the order in which they are listed in the Tidezone corrector file (*.ZDF). For example, tide station one (TS1) would be the first choice for an applicable zone followed by TS2, etc. when data are not available.


CHIEF, REQUIREMENTS AND DEVELOPMENT DIVISION



H11385 Aids to Navigation Report

Registry Number: H-11385
State: Mississippi
Locality: Mississippi Sound
Sub-locality: Bayou Cassotte to Lower Pascagoula Channel
Project Number: OPR-J376-NRT4-04
Survey Dates: 03/30/2005 - 07/05/2005

Charts Affected

Number	Edition	Date	Scale (RNC)	RNC Correction(s)*
11375	36th	01/01/2005	1:20,000 (11375_1)	USCG LNM: 05/13/2008 (05/20/2008) NGA NTM: 11/18/2006 (05/24/2008)
11374	34th	10/01/2007	1:40,000 (11374_1)	USCG LNM: 12/25/2007 (05/20/2008) NGA NTM: 11/18/2006 (05/24/2008)
11374	32nd	10/01/2003	1:40,000 (11374_2)	[L]NTM: ?
11373	46th	07/01/2007	1:80,000 (11373_1)	USCG LNM: 03/18/2008 (05/27/2008) NGA NTM: 11/18/2006 (06/07/2008)
11366	9th	03/01/2005	1:250,000 (11366_1)	[L]NTM: ?
11360	41st	03/01/2005	1:456,394 (11360_1)	[L]NTM: ?
1115A	41st	03/01/2005	1:456,394 (1115A_1)	[L]NTM: ?
11006	31st	09/01/2003	1:875,000 (11006_1)	[L]NTM: ?
411	49th	03/01/2003	1:2,160,000 (411_1)	[L]NTM: ?

* Correction(s) - source: last correction applied (last correction reviewed--"cleared date")

Features

No.	Name	Feature Type	Survey Depth	Survey Latitude	Survey Longitude	AWOIS Item
1.1	G DBN "11"	Daybeacon (green)	[None]	30° 19' 39.5" N	088° 30' 49.3" W	---
1.2	R DBN "10"	Daybeacon (red)	[None]	30° 19' 25.8" N	088° 30' 42.7" W	---
1.3	R DBN "8"	Daybeacon (red)	[None]	30° 19' 11.9" N	088° 30' 42.5" W	---
1.4	G DBN "7"	Daybeacon (green)	[None]	30° 19' 11.7" N	088° 30' 49.7" W	---
1.5	RANGE C FRONT LT	Daybeacon, front range	[None]	30° 19' 19.5" N	088° 30' 51.8" W	---
1.6	G DBN "5"	Daybeacon (green)	[None]	30° 18' 43.9" N	088° 30' 49.8" W	---
1.7	R DBN "6"	Daybeacon (red)	[None]	30° 18' 43.9" N	088° 30' 42.5" W	---

1.8	G DBN "3"	Daybeacon (green)	[None]	30° 18' 13.4" N	088° 30' 50.1" W	---
1.9	R DBN "4"	Daybeacon (red)	[None]	30° 18' 13.2" N	088° 30' 42.7" W	---
1.10	R DBN "2"	Daybeacon (red)	[None]	30° 17' 44.1" N	088° 30' 42.5" W	---
1.11	G DBN "1"	Daybeacon (green)	[None]	30° 17' 44.0" N	088° 30' 50.2" W	---
1.12	DP3146 Buoy R/G "BC"	Horizontally banded buoy, lighted	[None]	30° 17' 20.5" N	088° 30' 53.4" W	---
1.13	G Buoy "37"	Green buoy, lighted	[None]	30° 17' 13.5" N	088° 30' 53.5" W	---
1.14	G Buoy "35"	Green buoy, lighted	[None]	30° 17' 05.4" N	088° 30' 49.2" W	---
1.15	R Buoy "36"	Red buoy, lighted	[None]	30° 17' 10.8" N	088° 30' 42.3" W	---
1.16	G Buoy "33"	Green buoy, lighted	[None]	30° 16' 39.5" N	088° 30' 45.9" W	---
1.17	R Buoy "34"	Red buoy, lighted	[None]	30° 16' 40.0" N	088° 30' 39.9" W	---
1.18	R NUN "40" - Temp	Red buoy, lighted	[None]	30° 17' 46.3" N	088° 31' 16.8" W	---
1.19	G CAN "39"	Green buoy, lighted	[None]	30° 17' 42.4" N	088° 31' 22.2" W	---
1.20	R DBN "42"	Daybeacon (red)	[None]	30° 18' 19.0" N	088° 31' 48.1" W	---
1.21	G DBN "41"	Daybeacon (green)	[None]	30° 18' 12.9" N	088° 31' 52.3" W	---
1.22	Rear Range "B"	Daybeacon, rear range	[None]	30° 16' 15.5" N	088° 29' 53.4" W	---
1.23	Front Range "D"	Daybeacon, front range	[None]	30° 16' 25.4" N	088° 30' 46.7" W	---
1.24	Front Range "B"	Daybeacon, front range	[None]	30° 16' 56.6" N	088° 30' 33.2" W	---
1.25	Front Range "A"	Daybeacon, front range	[None]	30° 17' 55.8" N	088° 30' 52.1" W	---
1.26	Rear Range "A"	Daybeacon, rear range	[None]	30° 18' 26.0" N	088° 30' 55.9" W	---
1.27	Rear Range "C"	Daybeacon, rear range	[None]	30° 18' 55.6" N	088° 30' 58.0" W	---
1.28	Red Daybeacon "10A"	Daybeacon (red)	[None]	30° 19' 47.5" N	088° 30' 39.7" W	---
1.29	Front Range "A"	Marker front dredging range	[None]	30° 20' 08.2" N	088° 30' 45.8" W	---
1.30	Front Range "B"	Daybeacon, front range	[None]	30° 21' 07.3" N	088° 30' 22.4" W	---
1.31	Front Range	Daybeacon, front range	[None]	30° 21' 08.4" N	088° 30' 25.0" W	---
1.32	Rear range	Daybeacon, rear range	[None]	30° 21' 21.5" N	088° 30' 21.7" W	---
1.33	Rear Range "B"	Daybeacon, rear range	[None]	30° 21' 33.1" N	088° 30' 15.3" W	---

1 - DR AtoNs

1.1) G DBN "11"

Survey Summary

Survey Position: 30° 19' 39.5" N, 088° 30' 49.3" W
Least Depth: [None]
TPU ($\pm 1.96\sigma$): THU (TPEh) [None] ; TVU (TPEv) [None]
Timestamp: 2005-089.19:12:05.000 (03/30/2005)
DP Dataset: h11385_pascagoula_sheet_b / 3001dp_echosounder / 2005-089 / 03302005
Profile/Beam: 1/1
Charts Affected: 11375_1, 11374_2, 11373_1, 11366_1, 1115A_1, 11360_1, 11006_1, 411_1

Remarks:

G DBN "11" G LT - EXP 5M USCG LIGHT LIST # 7430

Feature Correlation

Address	Feature	Range	Azimuth	Status
h11385_pascagoula_sheet_b/3001dp_echosounder/2005-089/03302005	1/1	0.00	000.0	Primary

Hydrographer Recommendations

Retain as charted.

S-57 Data

Geo object 1: Beacon, lateral (BCNLAT)
Attributes: BCNSHP - 5:pole beacon
 CATLAM - 2:starboard-hand lateral mark
 COLOUR - 4:green
 HEIGHT - 5 m
 INFORM - G DBN "11" G LT - EXP 5M USCG LIGHT LIST # 7430
 STATUS - 1:permanent
 VERDAT - 12:Mean lower low water

Geo object 2: Daymark (DAYMAR)
Attributes: COLOUR - 4:green
 COLPAT - 6:border stripes

INFORM - G DBN "11" G LT - EXP 5M USCG LIGHT LIST # 7430

TOPSHP - 19:square

Geo object 3: Light (LIGHTS)

Attributes: CATLIT - 1:directional function

COLOUR - 4:green

INFORM - G DBN "11" G LT - EXP 5M USCG LIGHT LIST # 7430

Office Notes

QUA: GPSmode=2, SVs=8, HDOP=1.00 Chart

1.2) R DBN "10"

Survey Summary

Survey Position: 30° 19' 25.8" N, 088° 30' 42.7" W
Least Depth: [None]
TPU ($\pm 1.96\sigma$): THU (TPEh) [None] ; TVU (TPEv) [None]
Timestamp: 2005-089.19:14:38.000 (03/30/2005)
DP Dataset: h11385_pascagoula_sheet_b / 3001dp_echosounder / 2005-089 / 03302005
Profile/Beam: 2/1
Charts Affected: 11375_1, 11374_2, 11373_1, 11366_1, 1115A_1, 11360_1, 11006_1, 411_1

Remarks:

R DBN "10" R LT EXP 5M USCG LIGHT LIST # 7427

Feature Correlation

Address	Feature	Range	Azimuth	Status
h11385_pascagoula_sheet_b/3001dp_echosounder/2005-089/03302005	2/1	0.00	000.0	Primary

Hydrographer Recommendations

Retain as charted.

S-57 Data

Geo object 1: Beacon, lateral (BCNLAT)
Attributes: CATLAM - 2:starboard-hand lateral mark
 COLOUR - 3:red
 HEIGHT - 5 m
 INFORM - R DBN "10" R LT EXP 5M USCG LIGHT LIST # 7427
 STATUS - 1:permanent
 VERDAT - 12:Mean lower low water
Geo object 2: Daymark (DAYMAR)
Attributes: COLOUR - 3:red
 HEIGHT - 5 m
 INFORM - R DBN "10" R LT EXP 5M USCG LIGHT LIST # 7427

STATUS - 1:permanent

TOPSHP - 24:triangle, point up

VERDAT - 12:Mean lower low water

Geo object 3: Light (LIGHTS)

Attributes: COLOUR - 3:red

INFORM - R DBN "10" R LT EXP 5M USCG LIGHT LIST # 7427

Office Notes

USCG AToN exluded from H-Cell.

1.3) R DBN "8"

Survey Summary

Survey Position: 30° 19' 11.9" N, 088° 30' 42.5" W
Least Depth: [None]
TPU ($\pm 1.96\sigma$): THU (TPEh) [None] ; TVU (TPEv) [None]
Timestamp: 2005-089.19:16:43.000 (03/30/2005)
DP Dataset: h11385_pascagoula_sheet_b / 3001dp_echosounder / 2005-089 / 03302005
Profile/Beam: 3/1
Charts Affected: 11375_1, 11374_2, 11373_1, 11366_1, 1115A_1, 11360_1, 11006_1, 411_1

Remarks:

R DBN "8" R LT EXP 5M USCG LIGHT LIST # 7420

Feature Correlation

Address	Feature	Range	Azimuth	Status
h11385_pascagoula_sheet_b/3001dp_echosounder/2005-089/03302005	3/1	0.00	000.0	Primary

Hydrographer Recommendations

Retain as charted.

S-57 Data

Geo object 1: Beacon, lateral (BCNLAT)
Attributes: BCNSHP - 5:pile beacon
 CATLAM - 2:starboard-hand lateral mark
 COLOUR - 3:red
 HEIGHT - 5 m
 INFORM - R DBN "8" R LT EXP 5M USCG LIGHT LIST # 7420
 STATUS - 1:permanent
 VERDAT - 12:Mean lower low water

Geo object 2: Daymark (DAYMAR)
Attributes: COLOUR - 3:red
 INFORM - R DBN "8" R LT EXP 5M USCG LIGHT LIST # 7420

TOPSHP - 24:triangle, point up

Geo object 3: Light (LIGHTS)

Attributes: INFORM - R DBN "8" R LT EXP 5M USCG LIGHT LIST # 7420

Office Notes

USCG AToN exluded from H-Cell.

1.4) G DBN "7"

Survey Summary

Survey Position: 30° 19' 11.7" N, 088° 30' 49.7" W
Least Depth: [None]
TPU ($\pm 1.96\sigma$): THU (TPEh) [None] ; TVU (TPEv) [None]
Timestamp: 2005-089.19:18:15.000 (03/30/2005)
DP Dataset: h11385_pascagoula_sheet_b / 3001dp_echosounder / 2005-089 / 03302005
Profile/Beam: 4/1
Charts Affected: 11375_1, 11374_2, 11373_1, 11366_1, 1115A_1, 11360_1, 11006_1, 411_1

Remarks:

G DBN G LT 7 EXP 5M USCG LIGHT LIST # 7415

Feature Correlation

Address	Feature	Range	Azimuth	Status
h11385_pascagoula_sheet_b/3001dp_echosounder/2005-089/03302005	4/1	0.00	000.0	Primary

Hydrographer Recommendations

Retain as charted.

S-57 Data

Geo object 1: Beacon, lateral (BCNLAT)
Attributes: BCNSHP - 5:pole beacon
 CATLAM - 1:port-hand lateral mark
 COLOUR - 4:green
 INFORM - G DBN G LT 7 EXP 5M USCG LIGHT LIST # 7415

Geo object 2: Daymark (DAYMAR)
Attributes: COLOUR - 4:green
 INFORM - G DBN G LT 7 EXP 5M USCG LIGHT LIST # 7415
 TOPSHP - 19:square

Geo object 3: Light (LIGHTS)
Attributes: COLOUR - 4:green

HEIGHT - 5 m

INFORM - G DBN G LT 7 EXP 5M USCG LIGHT LIST # 7415

STATUS - 1:permanent

VERDAT - 12:Mean lower low water

Office Notes

USCG AToN exluded from H-Cell.

1.5) RANGE C FRONT LT

Survey Summary

Survey Position: 30° 19' 19.5" N, 088° 30' 51.8" W
Least Depth: [None]
TPU ($\pm 1.96\sigma$): THU (TPEh) [None] ; TVU (TPEv) [None]
Timestamp: 2005-089.19:20:10.000 (03/30/2005)
DP Dataset: h11385_pascagoula_sheet_b / 3001dp_echosounder / 2005-089 / 03302005
Profile/Beam: 5/1
Charts Affected: 11375_1, 11374_2, 11373_1, 11366_1, 1115A_1, 11360_1, 11006_1, 411_1

Remarks:

RANGE C FRONT LT USCG LIGHT LIST # 7465

Feature Correlation

Address	Feature	Range	Azimuth	Status
h11385_pascagoula_sheet_b/3001dp_echosounder/2005-089/03302005	5/1	0.00	000.0	Primary

Hydrographer Recommendations

Retain as charted.

S-57 Data

Geo object 1: Beacon, special purpose/general (BCNSPP)
Attributes: BCNSHP - 3:beacon tower
 CATSPM - 16:leading mark
 COLOUR - 1,3:white,red
 INFORM - RANGE C FRONT LT USCG LIGHT LIST # 7465
 STATUS - 1:permanent
 VERDAT - 12:Mean lower low water

Office Notes

QUA: GPSmode=2, SVs=8, HDOP=1.00 Chart

1.6) G DBN "5"

Survey Summary

Survey Position: 30° 18' 43.9" N, 088° 30' 49.8" W
Least Depth: [None]
TPU ($\pm 1.96\sigma$): THU (TPEh) [None] ; TVU (TPEv) [None]
Timestamp: 2005-089.19:23:32.000 (03/30/2005)
DP Dataset: h11385_pascagoula_sheet_b / 3001dp_echosounder / 2005-089 / 03302005
Profile/Beam: 6/1
Charts Affected: 11375_1, 11374_2, 11373_1, 11366_1, 1115A_1, 11360_1, 11006_1, 411_1

Remarks:

G DBN "5" G LT EXP 5M USCG LIGHT LIST # 7405

Feature Correlation

Address	Feature	Range	Azimuth	Status
h11385_pascagoula_sheet_b/3001dp_echosounder/2005-089/03302005	6/1	0.00	000.0	Primary

Hydrographer Recommendations

Retain as charted.

S-57 Data

Geo object 1: Beacon, lateral (BCNLAT)
Attributes: BCNSHP - 5:pole beacon
 CATLAM - 1:port-hand lateral mark
 COLOUR - 4:green
 HEIGHT - 4.5 m
 INFORM - G DBN "5" G LT EXP 5M USCG LIGHT LIST # 7405
 STATUS - 1:permanent
 VERDAT - 12:Mean lower low water

Geo object 2: Daymark (DAYMAR)
Attributes: COLOUR - 4:green
 INFORM - G DBN "5" G LT EXP 5M USCG LIGHT LIST # 7405

TOPSHP - 19:square

Geo object 3: Light (LIGHTS)

Attributes: INFORM - G DBN "5" G LT EXP 5M USCG LIGHT LIST # 7405

Office Notes

USCG AToN exluded from H-Cell.

1.7) R DBN "6"**Survey Summary**

Survey Position: 30° 18' 43.9" N, 088° 30' 42.5" W
Least Depth: [None]
TPU ($\pm 1.96\sigma$): **THU (TPEh)** [None] ; **TVU (TPEv)** [None]
Timestamp: 2005-089.19:24:53.000 (03/30/2005)
DP Dataset: h11385_pascagoula_sheet_b / 3001dp_echosounder / 2005-089 / 03302005
Profile/Beam: 7/1
Charts Affected: 11375_1, 11374_2, 11373_1, 11366_1, 1115A_1, 11360_1, 11006_1, 411_1

Remarks:

R DBN "6" R LT EXP 5M USCG LIGHT LIST # 7410

Feature Correlation

Address	Feature	Range	Azimuth	Status
h11385_pascagoula_sheet_b/3001dp_echosounder/2005-089/03302005	7/1	0.00	000.0	Primary

Hydrographer Recommendations

Retain as charted.

S-57 Data

Geo object 1: Beacon, lateral (BCNLAT)
Attributes: BCNSHP - 5:pile beacon
 CATLAM - 2:starboard-hand lateral mark
 COLOUR - 3:red
 INFORM - R DBN "6" R LT EXP 5M USCG LIGHT LIST # 7410

Geo object 2: Daymark (DAYMAR)
Attributes: COLOUR - 3:red
 HEIGHT - 5 m
 INFORM - R DBN "6" R LT EXP 5M USCG LIGHT LIST # 7410
 STATUS - 1:permanent
 TOPSHP - 24:triangle, point up

VERDAT - 12:Mean lower low water

Geo object 3: Light (LIGHTS)

Attributes: INFORM - R DBN "6" R LT EXP 5M USCG LIGHT LIST # 7410

Office Notes

USCG AToN exluded from H-Cell.

1.8) G DBN "3"

Survey Summary

Survey Position: 30° 18' 13.4" N, 088° 30' 50.1" W
Least Depth: [None]
TPU ($\pm 1.96\sigma$): THU (TPEh) [None] ; TVU (TPEv) [None]
Timestamp: 2005-089.19:31:28.000 (03/30/2005)
DP Dataset: h11385_pascagoula_sheet_b / 3001dp_echosounder / 2005-089 / 03302005
Profile/Beam: 10/1
Charts Affected: 11375_1, 11374_1, 11374_2, 11373_1, 11366_1, 1115A_1, 11360_1, 11006_1, 411_1

Remarks:

G DBN "3" G LT EXP 5M USCG LIGHT LIST # 7385

Feature Correlation

Address	Feature	Range	Azimuth	Status
h11385_pascagoula_sheet_b/3001dp_echosounder/2005-089/03302005	10/1	0.00	000.0	Primary

Hydrographer Recommendations

Retain as charted.

S-57 Data

Geo object 1: Beacon, lateral (BCNLAT)
Attributes: BCNSHP - 5:pole beacon
 CATLAM - 1:port-hand lateral mark
 COLOUR - 4:green
 INFORM - G DBN "3" G LT EXP 5M USCG LIGHT LIST # 7385
Geo object 2: Daymark (DAYMAR)
Attributes: COLOUR - 4:green
 HEIGHT - 5 m
 INFORM - G DBN "3" G LT EXP 5M USCG LIGHT LIST # 7385
 STATUS - 1:permanent
 TOPSHP - 19:square

VERDAT - 12:Mean lower low water

Geo object 3: Light (LIGHTS)

Attributes: INFORM - G DBN "3" G LT EXP 5M USCG LIGHT LIST # 7385

Office Notes

USCG AToN exluded from H-Cell.

1.9) R DBN "4"

Survey Summary

Survey Position: 30° 18' 13.2" N, 088° 30' 42.7" W
Least Depth: [None]
TPU ($\pm 1.96\sigma$): THU (TPEh) [None] ; TVU (TPEv) [None]
Timestamp: 2005-089.19:33:23.000 (03/30/2005)
DP Dataset: h11385_pascagoula_sheet_b / 3001dp_echosounder / 2005-089 / 03302005
Profile/Beam: 11/1
Charts Affected: 11375_1, 11374_1, 11374_2, 11373_1, 11366_1, 1115A_1, 11360_1, 11006_1, 411_1

Remarks:

R DBN "4" R LT EXP 5M USCG LIGHT LIST # 7390

Feature Correlation

Address	Feature	Range	Azimuth	Status
h11385_pascagoula_sheet_b/3001dp_echosounder/2005-089/03302005	11/1	0.00	000.0	Primary

Hydrographer Recommendations

Exists as charted.

S-57 Data

Geo object 1: Beacon, lateral (BCNLAT)
Attributes: BCNSHP - 5:pole beacon
 CATLAM - 2:starboard-hand lateral mark
 COLOUR - 3:red
 HEIGHT - 5 m
 INFORM - R DBN "4" R LT EXP 5M USCG LIGHT LIST # 7390
 STATUS - 1:permanent
 VERDAT - 12:Mean lower low water

Geo object 2: Daymark (DAYMAR)
Attributes: COLOUR - 3:red
 HEIGHT - 5 m

INFORM - R DBN "4" R LT EXP 5M USCG LIGHT LIST # 7390

STATUS - 1:permanent

TOPSHP - 24:triangle, point up

VERDAT - 12:Mean lower low water

Geo object 3: Light (LIGHTS)

Attributes: INFORM - R DBN "4" R LT EXP 5M USCG LIGHT LIST # 7390

Office Notes

USCG AToN exluded from H-Cell.

1.10) R DBN "2"

Survey Summary

Survey Position: 30° 17' 44.1" N, 088° 30' 42.5" W
Least Depth: [None]
TPU (±1.96σ): THU (TPEh) [None] ; TVU (TPEv) [None]
Timestamp: 2005-089.19:36:55.000 (03/30/2005)
DP Dataset: h11385_pascagoula_sheet_b / 3001dp_echosounder / 2005-089 / 03302005
Profile/Beam: 12/1
Charts Affected: 11375_1, 11374_1, 11374_2, 11373_1, 11366_1, 1115A_1, 11360_1, 11006_1, 411_1

Remarks:

R DBN "2" R LT EXP 5M USCG LIGHT LIST # 7380

Feature Correlation

Address	Feature	Range	Azimuth	Status
h11385_pascagoula_sheet_b/3001dp_echosounder/2005-089/03302005	12/1	0.00	000.0	Primary

Hydrographer Recommendations

Exists as charted.

S-57 Data

Geo object 1: Beacon, lateral (BCNLAT)
Attributes: BCNSHP - 5:pole beacon
 CATLAM - 2:starboard-hand lateral mark
 COLOUR - 3:red
 INFORM - R DBN "2" R LT EXP 5M USCG LIGHT LIST # 7380

Geo object 2: Daymark (DAYMAR)
Attributes: COLOUR - 3:red
 HEIGHT - 5 m
 INFORM - R DBN "2" R LT EXP 5M USCG LIGHT LIST # 7380
 STATUS - 1:permanent
 TOPSHP - 24:triangle, point up

VERDAT - 12:Mean lower low water

Geo object 3: Light (LIGHTS)

Attributes: INFORM - R DBN "2" R LT EXP 5M USCG LIGHT LIST # 7380

Office Notes

USCG AToN exluded from H-Cell.

1.11) G DBN "1"

Survey Summary

Survey Position: 30° 17' 44.0" N, 088° 30' 50.2" W
Least Depth: [None]
TPU ($\pm 1.96\sigma$): THU (TPEh) [None] ; TVU (TPEv) [None]
Timestamp: 2005-089.19:38:14.000 (03/30/2005)
DP Dataset: h11385_pascagoula_sheet_b / 3001dp_echosounder / 2005-089 / 03302005
Profile/Beam: 13/1
Charts Affected: 11375_1, 11374_1, 11374_2, 11373_1, 11366_1, 1115A_1, 11360_1, 11006_1, 411_1

Remarks:

G DBN "1" G LT EXP 5M USCG LIGHT LIST # 7375

Feature Correlation

Address	Feature	Range	Azimuth	Status
h11385_pascagoula_sheet_b/3001dp_echosounder/2005-089/03302005	13/1	0.00	000.0	Primary

Hydrographer Recommendations

Exists as charted.

S-57 Data

Geo object 1: Beacon, lateral (BCNLAT)
Attributes: BCNSHP - 5:pole beacon
 CATLAM - 1:port-hand lateral mark
 COLOUR - 4:green
 HEIGHT - 5 m
 INFORM - G DBN "1" G LT EXP 5M USCG LIGHT LIST # 7375
 STATUS - 1:permanent
 VERDAT - 12:Mean lower low water
Geo object 2: Daymark (DAYMAR)
Attributes: COLOUR - 4:green
 HEIGHT - 5 m

INFORM - G DBN "1" G LT EXP 5M USCG LIGHT LIST # 7375

STATUS - 1:permanent

TOPSHP - 19:square

VERDAT - 12:Mean lower low water

Geo object 3: Light (LIGHTS)

Attributes: INFORM - G DBN "1" G LT EXP 5M USCG LIGHT LIST # 7375

Office Notes

USCG AToN exluded from H-Cell.

1.12) DP3146 Buoy R/G "BC"

Survey Summary

Survey Position: 30° 17' 20.5" N, 088° 30' 53.4" W
Least Depth: [None]
TPU ($\pm 1.96\sigma$): THU (TPEh) [None] ; TVU (TPEv) [None]
Timestamp: 2005-089.19:40:54.000 (03/30/2005)
DP Dataset: h11385_pascagoula_sheet_b / 3001dp_echosounder / 2005-089 / 03302005
Profile/Beam: 14/1
Charts Affected: 11375_1, 11374_1, 11374_2, 11373_1, 11366_1, 1115A_1, 11360_1, 11006_1, 411_1

Remarks:

R LT w/ R NUN W/ G STRIPE "BC" USCG LIGHT LIST # 7060

Feature Correlation

Address	Feature	Range	Azimuth	Status
h11385_pascagoula_sheet_b/3001dp_echosounder/2005-089/03302005	14/1	0.00	000.0	Primary

Hydrographer Recommendations

Exists as charted.

S-57 Data

Geo object 1: Buoy, special purpose/general (BOYSPP)
Attributes: BOYSHP - 1:conical (nun, ogival)
 CATSPM - 54:channel separation mark
 COLOUR - 3,4:red,green
 COLPAT - 1:horizontal stripes
 INFORM - R LT w/ R NUN W/ G STRIPE "BC" USCG LIGHT LIST # 7060
 STATUS - 1:permanent
Geo object 2: Light (LIGHTS)
Attributes: COLOUR - 3,4:red,green
 INFORM - R LT w/ R NUN W/ G STRIPE "BC" USCG LIGHT LIST # 7060
 VERDAT - 12:Mean lower low water

Office Notes

USCG AToN exluded from H-Cell.

1.13) G Buoy "37"

Survey Summary

Survey Position: 30° 17' 13.5" N, 088° 30' 53.5" W
Least Depth: [None]
TPU ($\pm 1.96\sigma$): THU (TPEh) [None] ; TVU (TPEv) [None]
Timestamp: 2005-089.19:42:17.000 (03/30/2005)
DP Dataset: h11385_pascagoula_sheet_b / 3001dp_echosounder / 2005-089 / 03302005
Profile/Beam: 15/1
Charts Affected: 11375_1, 11374_1, 11374_2, 11373_1, 11366_1, 1115A_1, 11360_1, 11006_1, 411_1

Remarks:

G LT w/ G Buoy "37" USCG LIGHT LIST # 7055

Feature Correlation

Address	Feature	Range	Azimuth	Status
h11385_pascagoula_sheet_b/3001dp_echosounder/2005-089/03302005	15/1	0.00	000.0	Primary

Hydrographer Recommendations

Exists as charted.

S-57 Data

Geo object 1: Buoy, lateral (BOYLAT)
Attributes: BOYSHP - 2:can (cylindrical)
 CATLAM - 1:port-hand lateral mark
 COLOUR - 4:green
 INFORM - G LT w/ G Buoy "37" USCG LIGHT LIST # 7055
 STATUS - 1:permanent
Geo object 2: Light (LIGHTS)
Attributes: COLOUR - 4:green
 INFORM - G LT w/ G Buoy "37" USCG LIGHT LIST # 7055
 STATUS - 1:permanent
 VERDAT - 12:Mean lower low water

Office Notes

USCG AToN exluded from H-Cell.

1.14) G Buoy "35"

Survey Summary

Survey Position: 30° 17' 05.4" N, 088° 30' 49.2" W
Least Depth: [None]
TPU ($\pm 1.96\sigma$): THU (TPEh) [None] ; TVU (TPEv) [None]
Timestamp: 2005-089.19:44:10.000 (03/30/2005)
DP Dataset: h11385_pascagoula_sheet_b / 3001dp_echosounder / 2005-089 / 03302005
Profile/Beam: 16/1
Charts Affected: 11375_1, 11374_1, 11374_2, 11373_1, 11366_1, 1115A_1, 11360_1, 11006_1, 411_1

Remarks:

G Buoy "35" W/ G LT USCG LIGHT LIST # 7045

Feature Correlation

Address	Feature	Range	Azimuth	Status
h11385_pascagoula_sheet_b/3001dp_echosounder/2005-089/03302005	16/1	0.00	000.0	Primary

Hydrographer Recommendations

Exists as charted.

S-57 Data

Geo object 1: Buoy, lateral (BOYLAT)
Attributes: BOYSHP - 2:can (cylindrical)
 CATLAM - 1:port-hand lateral mark
 COLOUR - 4:green
 INFORM - G Buoy "35" W/ G LT USCG LIGHT LIST # 7045
 STATUS - 1:permanent
Geo object 2: Light (LIGHTS)
Attributes: COLOUR - 4:green
 INFORM - G Buoy "35" W/ G LT USCG LIGHT LIST # 7045

Office Notes

USCG AToN exluded from H-Cell.

1.15) R Buoy "36"

Survey Summary

Survey Position: 30° 17' 10.8" N, 088° 30' 42.3" W
Least Depth: [None]
TPU (±1.96σ): THU (TPEh) [None] ; TVU (TPEv) [None]
Timestamp: 2005-089.19:46:23.000 (03/30/2005)
DP Dataset: h11385_pascagoula_sheet_b / 3001dp_echosounder / 2005-089 / 03302005
Profile/Beam: 17/1
Charts Affected: 11375_1, 11374_1, 11374_2, 11373_1, 11366_1, 1115A_1, 11360_1, 11006_1, 411_1

Remarks:

R Buoy "36" W/ R LT USCG LIGHT LIST # 7050

Feature Correlation

Address	Feature	Range	Azimuth	Status
h11385_pascagoula_sheet_b/3001dp_echosounder/2005-089/03302005	17/1	0.00	000.0	Primary

Hydrographer Recommendations

Exists as charted.

S-57 Data

Geo object 1: Buoy, lateral (BOYLAT)
Attributes: BOYSHP - 1:conical (nun, ogival)
 CATLAM - 2:starboard-hand lateral mark
 COLOUR - 3:red
 INFORM - R Buoy "36" W/ R LT USCG LIGHT LIST # 7050
 STATUS - 1:permanent
Geo object 2: Light (LIGHTS)
Attributes: COLOUR - 3:red
 INFORM - R Buoy "36" W/ R LT USCG LIGHT LIST # 7050

Office Notes

USCG AToN exluded from H-Cell.

1.16) G Buoy "33"

Survey Summary

Survey Position: 30° 16' 39.5" N, 088° 30' 45.9" W
Least Depth: [None]
TPU ($\pm 1.96\sigma$): THU (TPEh) [None] ; TVU (TPEv) [None]
Timestamp: 2005-089.19:49:19.000 (03/30/2005)
DP Dataset: h11385_pascagoula_sheet_b / 3001dp_echosounder / 2005-089 / 03302005
Profile/Beam: 18/1
Charts Affected: 11375_1, 11374_1, 11374_2, 11373_1, 11366_1, 1115A_1, 11360_1, 11006_1, 411_1

Remarks:

G Buoy "33" W/ G LT USCG LIGHT LIST # 7015

Feature Correlation

Address	Feature	Range	Azimuth	Status
h11385_pascagoula_sheet_b/3001dp_echosounder/2005-089/03302005	18/1	0.00	000.0	Primary

Hydrographer Recommendations

Exists as charted.

S-57 Data

Geo object 1: Buoy, lateral (BOYLAT)
Attributes: BOYSHP - 2:can (cylindrical)
 CATLAM - 1:port-hand lateral mark
 COLOUR - 4:green
 INFORM - G Buoy "33" W/ G LT USCG LIGHT LIST # 7015
 STATUS - 1:permanent
Geo object 2: Light (LIGHTS)
Attributes: COLOUR - 4:green
 INFORM - G Buoy "33" W/ G LT USCG LIGHT LIST # 7015

Office Notes

USCG AToN exluded from H-Cell.

1.17) R Buoy "34"

Survey Summary

Survey Position: 30° 16' 40.0" N, 088° 30' 39.9" W
Least Depth: [None]
TPU (±1.96σ): THU (TPEh) [None] ; TVU (TPEv) [None]
Timestamp: 2005-089.19:50:27.000 (03/30/2005)
DP Dataset: h11385_pascagoula_sheet_b / 3001dp_echosounder / 2005-089 / 03302005
Profile/Beam: 19/1
Charts Affected: 11375_1, 11374_1, 11374_2, 11373_1, 11366_1, 1115A_1, 11360_1, 11006_1, 411_1

Remarks:

R LT w/R Buoy "34" USCG LIGHT LIST # 7020

Feature Correlation

Address	Feature	Range	Azimuth	Status
h11385_pascagoula_sheet_b/3001dp_echosounder/2005-089/03302005	19/1	0.00	000.0	Primary

Hydrographer Recommendations

Exists as charted.

S-57 Data

Geo object 1: Buoy, lateral (BOYLAT)
Attributes: BOYSHP - 1:conical (nun, ogival)
 CATLAM - 2:starboard-hand lateral mark
 COLOUR - 3:red
 INFORM - R LT w/R Buoy "34" USCG LIGHT LIST # 7020
 STATUS - 1:permanent
Geo object 2: Light (LIGHTS)
Attributes: COLOUR - 3:red
 INFORM - R LT w/R Buoy "34" USCG LIGHT LIST # 7020

Office Notes

USCG AToN exluded from H-Cell.

1.18) R NUN "40" - Temp

Survey Summary

Survey Position: 30° 17' 46.3" N, 088° 31' 16.8" W
Least Depth: [None]
TPU (±1.96σ): THU (TPEh) [None] ; TVU (TPEv) [None]
Timestamp: 2005-089.19:59:15.000 (03/30/2005)
DP Dataset: h11385_pascagoula_sheet_b / 3001dp_echosounder / 2005-089 / 03302005
Profile/Beam: 22/1
Charts Affected: 11375_1, 11374_1, 11374_2, 11373_1, 11366_1, 1115A_1, 11360_1, 11006_1, 411_1

Remarks:

WHITE LT w/ R NUN "40" - TEMPORARY USCG Light List # 7090 does not exist. Replaced by temporary bouy.

Feature Correlation

Address	Feature	Range	Azimuth	Status
h11385_pascagoula_sheet_b/3001dp_echosounder/2005-089/03302005	22/1	0.00	000.0	Primary

Hydrographer Recommendations

Retain as charted.

S-57 Data

Geo object 1: Buoy, lateral (BOYLAT)
Attributes: BOYSHP - 1:conical (nun, ogival)
 CATLAM - 2:starboard-hand lateral mark
 COLOUR - 3:red
 INFORM - WHITE LT w/ R NUN "40" - TEMPORARY USCG Light List # 7090 does not exist. Replaced by temporary bouy.
 STATUS - 7:temporary

Geo object 2: Light (LIGHTS)
Attributes: COLOUR - 1:white
 INFORM - WHITE LT w/ R NUN "40" - TEMPORARY USCG Light List # 7090 does not exist. Replaced by temporary bouy.

Office Notes

USCG AToN exluded from H-Cell.

1.19) G CAN "39"

Survey Summary

Survey Position: 30° 17' 42.4" N, 088° 31' 22.2" W
Least Depth: [None]
TPU (±1.96σ): THU (TPEh) [None] ; TVU (TPEv) [None]
Timestamp: 2005-089.20:00:27.000 (03/30/2005)
DP Dataset: h11385_pascagoula_sheet_b / 3001dp_echosounder / 2005-089 / 03302005
Profile/Beam: 23/1
Charts Affected: 11375_1, 11374_1, 11374_2, 11373_1, 11366_1, 1115A_1, 11360_1, 11006_1, 411_1

Remarks:

WHITE LGIHT W/ G CAN "39" - TEMPORARY USCG LIGHT LIST # 7085 DOES NOT EXIST - REPLACED BY TEMPORARY MARKER.

Feature Correlation

Address	Feature	Range	Azimuth	Status
h11385_pascagoula_sheet_b/3001dp_echosounder/2005-089/03302005	23/1	0.00	000.0	Primary

Hydrographer Recommendations

Retain as charted.

S-57 Data

Geo object 1: Buoy, lateral (BOYLAT)
Attributes: BOYSHP - 2:can (cylindrical)
 CATLAM - 1:port-hand lateral mark
 COLOUR - 4:green
 INFORM - WHITE LGIHT W/ G CAN "39" - TEMPORARY USCG LIGHT LIST # 7085 DOES NOT EXIST - REPLACED BY TEMPORARY MARKER.
 STATUS - 7:temporary

Geo object 2: Light (LIGHTS)
Attributes: COLOUR - 1:white
 INFORM - WHITE LGIHT W/ G CAN "39" - TEMPORARY USCG LIGHT LIST # 7085 DOES NOT EXIST - REPLACED BY TEMPORARY MARKER.

STATUS - 7:temporary

VERDAT - 12:Mean lower low water

Office Notes

USCG AToN exluded from H-Cell.

1.20) R DBN "42"**Survey Summary**

Survey Position: 30° 18' 19.0" N, 088° 31' 48.1" W
Least Depth: [None]
TPU ($\pm 1.96\sigma$): **THU (TPEh)** [None] ; **TVU (TPEv)** [None]
Timestamp: 2005-089.20:05:03.000 (03/30/2005)
DP Dataset: h11385_pascagoula_sheet_b / 3001dp_echosounder / 2005-089 / 03302005
Profile/Beam: 25/1
Charts Affected: 11375_1, 11374_1, 11374_2, 11373_1, 11366_1, 1115A_1, 11360_1, 11006_1, 411_1

Remarks:

R LT W/ R DBN "42" - EXP 5M. USCG LIGHT LIST # 7100

Feature Correlation

Address	Feature	Range	Azimuth	Status
h11385_pascagoula_sheet_b/3001dp_echosounder/2005-089/03302005	25/1	0.00	000.0	Primary

Hydrographer Recommendations

EXISTS AS CHARTED

S-57 Data

Geo object 1: Beacon, lateral (BCNLAT)
Attributes: INFORM - R LT W/ R DBN "42" - EXP 5M. USCG LIGHT LIST # 7100

Geo object 2: Daymark (DAYMAR)
Attributes: COLOUR - 3:red
 INFORM - R LT W/ R DBN "42" - EXP 5M. USCG LIGHT LIST # 7100
 TOPSHP - 24:triangle, point up

Geo object 3: Light (LIGHTS)
Attributes: COLOUR - 3:red
 HEIGHT - 5 m
 INFORM - R LT W/ R DBN "42" - EXP 5M. USCG LIGHT LIST # 7100
 VERDAT - 12:Mean lower low water

Office Notes

USCG AToN exluded from H-Cell.

1.21) G DBN "41"

Survey Summary

Survey Position: 30° 18' 12.9" N, 088° 31' 52.3" W
Least Depth: [None]
TPU (±1.96σ): THU (TPEh) [None] ; TVU (TPEv) [None]
Timestamp: 2005-089.20:06:09.000 (03/30/2005)
DP Dataset: h11385_pascagoula_sheet_b / 3001dp_echosounder / 2005-089 / 03302005
Profile/Beam: 26/1
Charts Affected: 11375_1, 11374_1, 11374_2, 11373_1, 11366_1, 1115A_1, 11360_1, 11006_1, 411_1

Remarks:

G DBN "41" W/ G LT - EXP 5M. USCG LIGHT LIST # 7095.

Feature Correlation

Address	Feature	Range	Azimuth	Status
h11385_pascagoula_sheet_b/3001dp_echosounder/2005-089/03302005	26/1	0.00	000.0	Primary

Hydrographer Recommendations

EXISTS AS CHARTED.

S-57 Data

Geo object 1: Beacon, lateral (BCNLAT)
Attributes: BCNSHP - 5:pole beacon
 CATLAM - 1:port-hand lateral mark
 COLOUR - 4:green
 HEIGHT - 5 m
 INFORM - G DBN "41" W/ G LT - EXP 5M. USCG LIGHT LIST # 7095.
 STATUS - 1:permanent
 VERDAT - 12:Mean lower low water
Geo object 2: Daymark (DAYMAR)
Attributes: COLOUR - 4:green
 HEIGHT - 5 m

INFORM - G DBN "41" W/ G LT - EXP 5M. USCG LIGHT LIST # 7095.

STATUS - 1:permanent

TOPSHP - 19:square

VERDAT - 12:Mean lower low water

Geo object 3: Light (LIGHTS)

Attributes: INFORM - G DBN "41" W/ G LT - EXP 5M. USCG LIGHT LIST # 7095.

Office Notes

USCG AToN exluded from H-Cell.

1.22) Rear Range "B"

Survey Summary

Survey Position: 30° 16' 15.5" N, 088° 29' 53.4" W
Least Depth: [None]
TPU ($\pm 1.96\sigma$): THU (TPEh) [None] ; TVU (TPEv) [None]
Timestamp: 2005-186.14:44:54.000 (07/05/2005)
DP Dataset: h11385_pascagoula_sheet_b / 3001dp_non_echosounder / 2005-186 / sheet_b_07052005
Profile/Beam: 1/1
Charts Affected: 11375_1, 11374_1, 11374_2, 11373_1, 11366_1, 1115A_1, 11360_1, 11006_1, 411_1

Remarks:

Rear Range "B", USCG LL # 7070. Exposed 20 m

Feature Correlation

Address	Feature	Range	Azimuth	Status
h11385_pascagoula_sheet_b/3001dp_non_echosounder/2005-186/sheet_b_07052005	1/1	0.00	000.0	Primary

Hydrographer Recommendations

Exists as charted.

S-57 Data

Geo object 1: Beacon, special purpose/general (BCNSPP)
Attributes: BCNSHP - 3:beacon tower
 CATSPM - 17:measured distance mark
 COLOUR - 1,3:white,red
 INFORM - Rear Range "B", USCG LL # 7070. Exposed 20 m
Geo object 2: Light (LIGHTS)
Attributes: CATLIT - 13:rear
 COLOUR - 1:white
 HEIGHT - 20 m
 INFORM - Rear Range "B", USCG LL # 7070. Exposed 20 m
 LITCHR - 8:occluding

Office Notes

Retain as charted.

1.23) Front Range "D"

Survey Summary

Survey Position: 30° 16' 25.4" N, 088° 30' 46.7" W
Least Depth: [None]
TPU ($\pm 1.96\sigma$): THU (TPEh) [None] ; TVU (TPEv) [None]
Timestamp: 2005-186.14:57:37.000 (07/05/2005)
DP Dataset: h11385_pascagoula_sheet_b / 3001dp_non_echosounder / 2005-186 / sheet_b_07052005
Profile/Beam: 3/1
Charts Affected: 11375_1, 11374_1, 11374_2, 11373_1, 11366_1, 1115A_1, 11360_1, 11006_1, 411_1

Remarks:

Range "D" Front Light, Exposed 8 m, USCG LL #6930.

Feature Correlation

Address	Feature	Range	Azimuth	Status
h11385_pascagoula_sheet_b/3001dp_non_echosounder/2005-186/sheet_b_07052005	3/1	0.00	000.0	Primary

Hydrographer Recommendations

Exists as charted.

S-57 Data

Geo object 1: Beacon, special purpose/general (BCNSPP)
Attributes: BCNSHP - 3:beacon tower
 CATSPM - 16:leading mark
 COLOUR - 1,3:white,red
 HEIGHT - 8 m
 INFORM - Range "D" Front Light, Exposed 8 m, USCG LL #6930.
 STATUS - 1:permanent
 VERDAT - 12:Mean lower low water
Geo object 2: Light (LIGHTS)
Attributes: CATLIT - 4:leading light
 COLOUR - 1:white

INFORM - Range "D" Front Light, Exposed 8 m, USCG LL #6930.

LITCHR - 4:quick-flashing

STATUS - 1:permanent

Office Notes

Concur.

1.24) Front Range "B"

Survey Summary

Survey Position: 30° 16' 56.6" N, 088° 30' 33.2" W
Least Depth: [None]
TPU ($\pm 1.96\sigma$): THU (TPEh) [None] ; TVU (TPEv) [None]
Timestamp: 2005-186.15:03:06.000 (07/05/2005)
DP Dataset: h11385_pascagoula_sheet_b / 3001dp_non_echosounder / 2005-186 / sheet_b_07052005
Profile/Beam: 4/1
Charts Affected: 11375_1, 11374_1, 11374_2, 11373_1, 11366_1, 1115A_1, 11360_1, 11006_1, 411_1

Remarks:

Range "B" Front Light, Exposed 8m, USCG LL# 7065.

Feature Correlation

Address	Feature	Range	Azimuth	Status
h11385_pascagoula_sheet_b/3001dp_non_echosounder/2005-186/sheet_b_07052005	4/1	0.00	000.0	Primary

Hydrographer Recommendations

Item exists as charted.

S-57 Data

Geo object 1: Beacon, special purpose/general (BCNSPP)
Attributes: BCNSHP - 3:beacon tower
 CATSPM - 16:leading mark
 COLOUR - 1,3:white,red
 HEIGHT - 8 m
 INFORM - Range "B" Front Light, Exposed 8m, USCG LL# 7065.
 STATUS - 1:permanent

Geo object 2: Light (LIGHTS)
Attributes: CATLIT - 4:leading light
 COLOUR - 1:white
 INFORM - Range "B" Front Light, Exposed 8m, USCG LL# 7065.

Office Notes

Retain as charted.

1.25) Front Range "A"

Survey Summary

Survey Position: 30° 17' 55.8" N, 088° 30' 52.1" W
Least Depth: [None]
TPU ($\pm 1.96\sigma$): THU (TPEh) [None] ; TVU (TPEv) [None]
Timestamp: 2005-186.15:08:58.000 (07/05/2005)
DP Dataset: h11385_pascagoula_sheet_b / 3001dp_non_echosounder / 2005-186 / sheet_b_07052005
Profile/Beam: 5/1
Charts Affected: 11375_1, 11374_1, 11374_2, 11373_1, 11366_1, 1115A_1, 11360_1, 11006_1, 411_1

Remarks:

Range "A" Front Light, Exposed 8m, USCG LL #6955.

Feature Correlation

Address	Feature	Range	Azimuth	Status
h11385_pascagoula_sheet_b/3001dp_non_echosounder/2005-186/sheet_b_07052005	5/1	0.00	000.0	Primary

Hydrographer Recommendations

Exists as charted.

S-57 Data

Geo object 1: Beacon, special purpose/general (BCNSPP)
Attributes: BCNSHP - 3:beacon tower
 CATSPM - 16:leading mark
 COLOUR - 1,3:white,red
 HEIGHT - 8 m
 INFORM - Range "A" Front Light, Exposed 8m, USCG LL #6955.
 STATUS - 1:permanent

Geo object 2: Light (LIGHTS)
Attributes: CATLIT - 4:leading light
 COLOUR - 1:white
 INFORM - Range "A" Front Light, Exposed 8m, USCG LL #6955.

Office Notes

Retain as charted.

1.26) Rear Range "A"

Survey Summary

Survey Position: 30° 18' 26.0" N, 088° 30' 55.9" W
Least Depth: [None]
TPU ($\pm 1.96\sigma$): THU (TPEh) [None] ; TVU (TPEv) [None]
Timestamp: 2005-186.15:13:33.000 (07/05/2005)
DP Dataset: h11385_pascagoula_sheet_b / 3001dp_non_echosounder / 2005-186 / sheet_b_07052005
Profile/Beam: 6/1
Charts Affected: 11375_1, 11374_1, 11374_2, 11373_1, 11366_1, 1115A_1, 11360_1, 11006_1, 411_1

Remarks:

Range "A" Rear Light, Exposed 21m, USCG LL #6960.

Feature Correlation

Address	Feature	Range	Azimuth	Status
h11385_pascagoula_sheet_b/3001dp_non_echosounder/2005-186/sheet_b_07052005	6/1	0.00	000.0	Primary

Hydrographer Recommendations

Exists as charted.

S-57 Data

Geo object 1: Beacon, special purpose/general (BCNSPP)
Attributes: BCNSHP - 3:beacon tower
 CATSPM - 17:measured distance mark
 HEIGHT - 21 m
 INFORM - Range "A" Rear Light, Exposed 21m, USCG LL #6960.
 STATUS - 1:permanent
Geo object 2: Light (LIGHTS)
Attributes: CATLIT - 13:rear
 COLOUR - 1:white
 INFORM - Range "A" Rear Light, Exposed 21m, USCG LL #6960.
 STATUS - 1:permanent

Office Notes

Excluded from h11385 H-cell.

1.27) Rear Range "C"

Survey Summary

Survey Position: 30° 18' 55.6" N, 088° 30' 58.0" W
Least Depth: [None]
TPU ($\pm 1.96\sigma$): THU (TPEh) [None] ; TVU (TPEv) [None]
Timestamp: 2005-186.15:17:53.000 (07/05/2005)
DP Dataset: h11385_pascagoula_sheet_b / 3001dp_non_echosounder / 2005-186 / sheet_b_07052005
Profile/Beam: 7/1
Charts Affected: 11375_1, 11374_2, 11373_1, 11366_1, 1115A_1, 11360_1, 11006_1, 411_1

Remarks:

Range "C" Rear Light, Exposed 11m, USCG LL# 7080.

Feature Correlation

Address	Feature	Range	Azimuth	Status
h11385_pascagoula_sheet_b/3001dp_non_echosounder/2005-186/sheet_b_07052005	7/1	0.00	000.0	Primary

Hydrographer Recommendations

Exists as charted.

S-57 Data

Geo object 1: Beacon, special purpose/general (BCNSPP)
Attributes: BCNSHP - 3:beacon tower
 CATSPM - 17:measured distance mark
 COLOUR - 1,3:white,red
 HEIGHT - 11 m
 INFORM - Range "C" Rear Light, Exposed 11m, USCG LL# 7080.
 STATUS - 1:permanent
 VERDAT - 12:Mean lower low water
Geo object 2: Light (LIGHTS)
Attributes: CATLIT - 13:rear
 COLOUR - 1:white

INFORM - Range "C" Rear Light, Exposed 11m, USCG LL# 7080.

STATUS - 1:permanent

Office Notes

Concur.

1.28) Red Daybeacon "10A"

Survey Summary

Survey Position: 30° 19' 47.5" N, 088° 30' 39.7" W
Least Depth: [None]
TPU ($\pm 1.96\sigma$): THU (TPEh) [None] ; TVU (TPEv) [None]
Timestamp: 2005-186.15:23:08.000 (07/05/2005)
DP Dataset: h11385_pascagoula_sheet_b / 3001dp_non_echosounder / 2005-186 / sheet_b_07052005
Profile/Beam: 8/1
Charts Affected: 11375_1, 11374_2, 11373_1, 11366_1, 1115A_1, 11360_1, 11006_1, 411_1

Remarks:

Red light "10A", exposed 5m, USCG LL# 7427

Feature Correlation

Address	Feature	Range	Azimuth	Status
h11385_pascagoula_sheet_b/3001dp_non_echosounder/2005-186/sheet_b_07052005	8/1	0.00	000.0	Primary

Hydrographer Recommendations

Exists as charted.

S-57 Data

Geo object 1: Beacon, lateral (BCNLAT)
Attributes: BCNSHP - 5:pole beacon
 CATLAM - 2:starboard-hand lateral mark
 COLOUR - 3:red
 INFORM - Red light "10A", exposed 5m, USCG LL# 7427
 STATUS - 1:permanent
 VERDAT - 12:Mean lower low water

Geo object 2: Daymark (DAYMAR)
Attributes: COLOUR - 3:red
 INFORM - Red light "10A", exposed 5m, USCG LL# 7427
 STATUS - 1:permanent

TOPSHP - 24:triangle, point up

VERDAT - 12:Mean lower low water

Office Notes

Concur.

1.29) Front Range "A"

Survey Summary

Survey Position: 30° 20' 08.2" N, 088° 30' 45.8" W
Least Depth: [None]
TPU ($\pm 1.96\sigma$): THU (TPEh) [None] ; TVU (TPEv) [None]
Timestamp: 2005-186.15:26:53.000 (07/05/2005)
DP Dataset: h11385_pascagoula_sheet_b / 3001dp_non_echosounder / 2005-186 / sheet_b_07052005
Profile/Beam: 9/1
Charts Affected: 11375_1, 11374_2, 11373_1, 1115A_1, 11360_1, 11006_1, 411_1

Remarks:

Range Marker "A" Front Light, Exposed 15m, USCG LL #7355.

Feature Correlation

Address	Feature	Range	Azimuth	Status
h11385_pascagoula_sheet_b/3001dp_non_echosounder/2005-186/sheet_b_07052005	9/1	0.00	000.0	Primary

Hydrographer Recommendations

Exists as charted.

S-57 Data

Geo object 1: Beacon, special purpose/general (BCNSPP)
Attributes: BCNSHP - 3:beacon tower
 CATSPM - 16:leading mark
 HEIGHT - 15 m
 INFORM - Range Marker "A" Front Light, Exposed 15m, USCG LL #7355.
 STATUS - 1:permanent
 VERDAT - 12:Mean lower low water

Geo object 2: Light (LIGHTS)
Attributes: CATLIT - 4:leading light
 COLOUR - 1:white
 HEIGHT - 15 m

INFORM - Range Marker "A" Front Light, Exposed 15m, USCG LL #7355.

STATUS - 1:permanent

Office Notes

Concur.

1.30) Front Range "B"

Survey Summary

Survey Position: 30° 21' 07.3" N, 088° 30' 22.4" W
Least Depth: [None]
TPU ($\pm 1.96\sigma$): THU (TPEh) [None] ; TVU (TPEv) [None]
Timestamp: 2005-186.15:35:59.000 (07/05/2005)
DP Dataset: h11385_pascagoula_sheet_b / 3001dp_non_echosounder / 2005-186 / sheet_b_07052005
Profile/Beam: 10/1
Charts Affected: 11375_1, 11374_2, 11373_1, 1115A_1, 11360_1, 11006_1, 411_1

Remarks:

Range "B" Front Light, exposed 7m, USCG LL # 7435.

Feature Correlation

Address	Feature	Range	Azimuth	Status
h11385_pascagoula_sheet_b/3001dp_non_echosounder/2005-186/sheet_b_07052005	10/1	0.00	000.0	Primary

Hydrographer Recommendations

Exists as charted.

S-57 Data

Geo object 1: Beacon, special purpose/general (BCNSPP)
Attributes: BCNSHP - 3:beacon tower
 CATSPM - 16:leading mark
 HEIGHT - 7 m
 INFORM - Range "B" Front Light, exposed 7m, USCG LL # 7435.
 STATUS - 1:permanent
Geo object 2: Light (LIGHTS)
Attributes: CATLIT - 4:leading light
 COLOUR - 1:white
 INFORM - Range "B" Front Light, exposed 7m, USCG LL # 7435.
 STATUS - 1:permanent

Office Notes

Concur.

1.31) Front Range

Survey Summary

Survey Position: 30° 21' 08.4" N, 088° 30' 25.0" W
Least Depth: [None]
TPU ($\pm 1.96\sigma$): THU (TPEh) [None] ; TVU (TPEv) [None]
Timestamp: 2005-186.15:37:22.000 (07/05/2005)
DP Dataset: h11385_pascagoula_sheet_b / 3001dp_non_echosounder / 2005-186 / sheet_b_07052005
Profile/Beam: 11/1
Charts Affected: 11375_1, 11374_2, 11373_1, 1115A_1, 11360_1, 11006_1, 411_1

Remarks:

Light "A", exposed 4m, USCG LL# 7442

Feature Correlation

Address	Feature	Range	Azimuth	Status
h11385_pascagoula_sheet_b/3001dp_non_echosounder/2005-186/sheet_b_07052005	11/1	0.00	000.0	Primary

Hydrographer Recommendations

Exists as charted.

S-57 Data

Geo object 1: Beacon, special purpose/general (BCNSPP)
Attributes: BCNSHP - 3:beacon tower
 CATSPM - 16:leading mark
 COLOUR - 1,3:white,red
 COLPAT - 2:vertical stripes
 HEIGHT - 4 m
 INFORM - Light "A", exposed 4m, USCG LL# 7442
 OBJNAM - Turning Basin Marker
 STATUS - 1:permanent
 VERDAT - 12:Mean lower low water
Geo object 2: Light (LIGHTS)

Attributes: COLOUR - 1:white
INFORM - Light "A", exposed 4m, USCG LL# 7442
STATUS - 1:permanent

Geo object 3: Pile (PILPNT)

Attributes: INFORM - Light "A", exposed 4m, USCG LL# 7442

Office Notes

Concur.

1.32) Rear range

Survey Summary

Survey Position: 30° 21' 21.5" N, 088° 30' 21.7" W
Least Depth: [None]
TPU ($\pm 1.96\sigma$): THU (TPEh) [None] ; TVU (TPEv) [None]
Timestamp: 2005-186.15:40:31.000 (07/05/2005)
DP Dataset: h11385_pascagoula_sheet_b / 3001dp_non_echosounder / 2005-186 / sheet_b_07052005
Profile/Beam: 12/1
Charts Affected: 11375_1, 11374_2, 11373_1, 1115A_1, 11360_1, 11006_1, 411_1

Remarks:

Light "B", Exposed 6m, USCG LL # 7443

Feature Correlation

Address	Feature	Range	Azimuth	Status
h11385_pascagoula_sheet_b/3001dp_non_echosounder/2005-186/sheet_b_07052005	12/1	0.00	000.0	Primary

Hydrographer Recommendations

Exists as charted.

S-57 Data

Geo object 1: Beacon, special purpose/general (BCNSPP)
Attributes: BCNSHP - 3:beacon tower
 CATSPM - 16:leading mark
 COLOUR - 1,3:white,red
 HEIGHT - 6 m
 INFORM - Light "B", Exposed 6m, USCG LL # 7443
 OBJNAM - Rear range
 STATUS - 1:permanent
 VERDAT - 12:Mean lower low water
Geo object 2: Light (LIGHTS)
Attributes: COLOUR - 1:white

INFORM - Light "B", Exposed 6m, USCG LL # 7443

STATUS - 1:permanent

Geo object 3: Pile (PILPNT)

Attributes: INFORM - Light "B", Exposed 6m, USCG LL # 7443

Office Notes

Concur.

1.33) Rear Range "B"

Survey Summary

Survey Position: 30° 21' 33.1" N, 088° 30' 15.3" W
Least Depth: [None]
TPU ($\pm 1.96\sigma$): THU (TPEh) [None] ; TVU (TPEv) [None]
Timestamp: 2005-186.15:44:12.000 (07/05/2005)
DP Dataset: h11385_pascagoula_sheet_b / 3001dp_non_echosounder / 2005-186 / sheet_b_07052005
Profile/Beam: 13/1
Charts Affected: 11375_1, 11374_2, 11373_1, 1115A_1, 11360_1, 11006_1, 411_1

Remarks:

Range "B" Rear Light, Exposed 13m, USCG LL# 7440.

Feature Correlation

Address	Feature	Range	Azimuth	Status
h11385_pascagoula_sheet_b/3001dp_non_echosounder/2005-186/sheet_b_07052005	13/1	0.00	000.0	Primary

Hydrographer Recommendations

Exists as charted.

S-57 Data

Geo object 1: Beacon, special purpose/general (BCNSPP)
Attributes: BCNSHP - 3:beacon tower
 CATSPM - 16:leading mark
 HEIGHT - 13 m
 INFORM - Range "B" Rear Light, Exposed 13m, USCG LL# 7440.
 STATUS - 1:permanent
 VERDAT - 12:Mean lower low water
Geo object 2: Light (LIGHTS)
Attributes: INFORM - Range "B" Rear Light, Exposed 13m, USCG LL# 7440.

Office Notes

Concur.

**ATLANTIC HYDROGRAPHIC BRANCH
EVALUATION REPORT to ACCOMPANY
SURVEY H11385 (2005)**

This Evaluation Report has been written to supplement and/or clarify the original Descriptive Report. Sections in this report refer to the corresponding sections of the Descriptive Report.

B. DATA ACQUISITION AND PROCESSING

B.1 DATA PROCESSING

The following software was used to process data at the Atlantic Hydrographic Branch:

HSTP PYDRO version 8.7 (r2666)
CARIS HIPS/SIPS version 6.1 S21 HF 1-7
CARIS Bathy Manager version 2.1 HF 1-10
DKART INSPECTOR, version 5.0 Build 732 SP1
CARIS HOM version 3.3
CARIS S57 Composer version 1.0

B.2. QUALITY CONTROL

B.2.1. H-Cell

The AHB source depth grid for H11385's nautical chart update product entailed referencing a 2 meter resolution grid generated from the survey's Vertical Beam Echo Sounder (VBES) bathymetric data. The shoal depth and standard deviation child layers were extracted from the Caris BASE Uncertainty grid, then extended to include a Depth child layer for Bathymetric Attributed Grid (BAG) export as per specifications.

All survey scale and chart scale sounding selections were sourced from the grids' shoal depth layer. The survey scale sounding selections were extracted from the source grid using the distance interval of 1.9mm at a 1:10,000 scale. The chart scale selected soundings are a subset of the survey scale selected soundings. The surface model and the raster chart were referenced when selecting the chart scale soundings, ensuring that the selected soundings represented the bathymetry within the common area.

The pre-compilation products or components (Stand Alone HOB files (SAHOB)) that comprise H11385's H-cell (H11385_CS.000) includes chart scale sounding selections (SOUNDG), features including obstructions (OBSTRN), wrecks (WRECKS), seafloor characteristics (SBDARE), special purpose beacons (BCNSPP), Meta objects (M_COVR, M_QUAL), and cartographic Blue Notes (\$CSYMB). The individual SAHOB files were inserted or copied to a single BASE Manager feature layer, then exported to S57 format in order to create the H-Cell deliverable.

The H11385_SS.000 file containing survey scale selected soundings also includes the depth curves (DEPCNT). The depths curves are to be used for reference only and not intended for direct application to the raster and electronic charts.

The completed H-Cell (CS and SS) were exported as a Base Cell File (ENC.000) in S-57 format with all values in metric units. The metric equivalent ENC.000 file was then converted to NOAA chart units (H11385_CS.000) with all values measured in feet following NOAA sounding rounding rules.

All bottom characteristics were captured and copied from ENC US5MS22M as the field unit did not collect any samples. It is recommended to retain the sediment characteristics as currently charted within the common area of survey H11385.

Chart compilation was performed by Atlantic Hydrographic Branch personnel in Norfolk, Virginia. Compilation data will be forwarded to Hydrographic Surveys Division and Marine Chart Division, Silver Spring, Maryland.

The H11385 CARIS H-Cell final deliverables include the following products:

H11385_CS.000	1:20,000 Scale	H11385 H-Cell with Chart Scale Selected Soundings
H11385_SS.000	1:10,000 Scale	H11385 Selected Soundings (Survey Scale)

B.22. Junctions

No contemporary surveys exist for junction.

C. VERTICAL AND HORIZONTAL CONTROL

Final vertical correction processing was completed by the field unit personnel with no additional correction required by Atlantic Hydrographic Branch. The field unit applied verified water levels in conjunction with the preliminary tidal zoning which was accepted and approved by N/OPSI CO-OPS as the final zoning for H11385. Sounding datum is Mean Lower Low Water (MLLW). Vertical datum is Mean High Water (MHW)

Horizontal control used for this survey during data acquisition is based upon the North American Datum of 1983 (NAD83), UTM projection zone XVI. Office ENC processing of this survey required translating the datum to meet S-57 ENC requirements.

D. RESULTS AND RECOMMENDATIONS

D.1 CHART COMPARISON

11375 (36th Edition, 01/01/05)

Corrected through NM 01/08/2005

Corrected through LNM 01/04/2005

Scale 1:20,000

ENC Comparison

US5MS22M

Pascagoula Harbor Mississippi
Edition 16
Application Date 2008-09-24
Issue Date 2008-11-07
Chart 11375

D.1.1 Hydrography

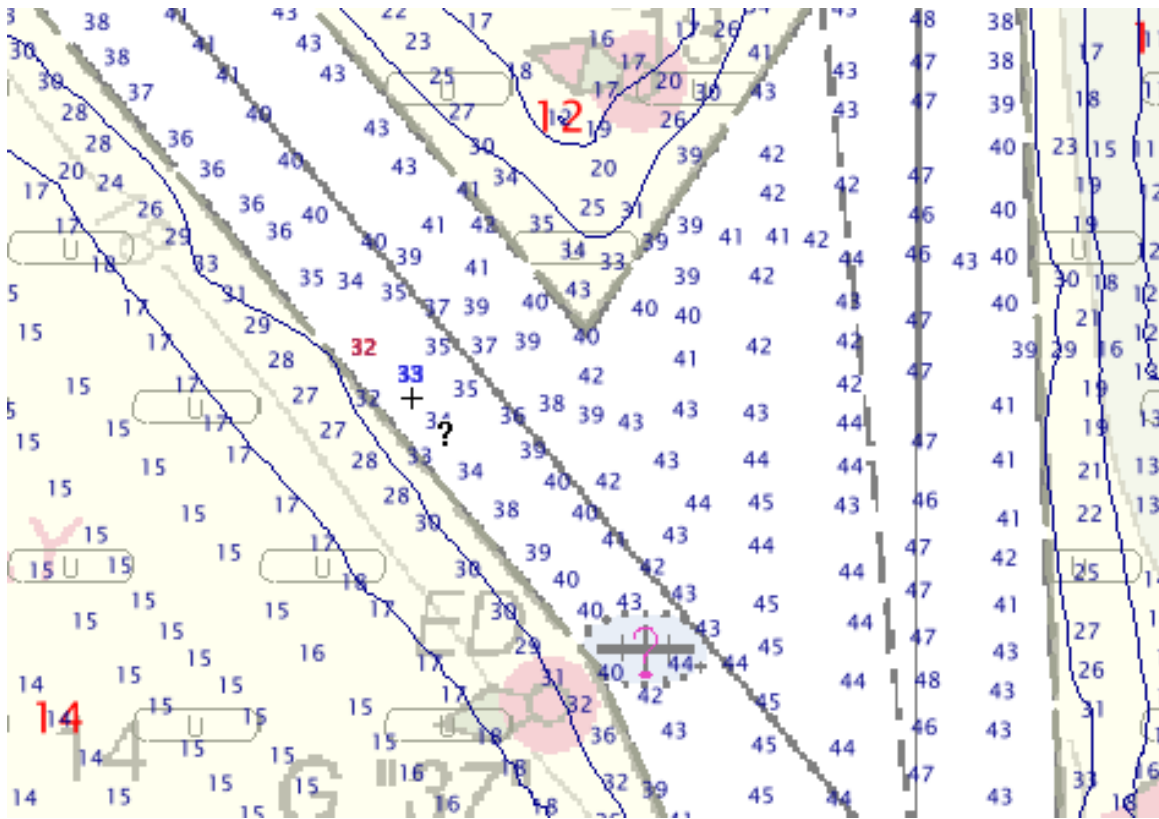
The charted hydrography originates with prior surveys and requires no further consideration. The hydrographer makes adequate chart comparisons in section “D” and Appendix 1&2 of the Descriptive Report. The following exceptions are noted:

a. A charted note Shoaling 1969 in Latitude 30° 16' 37.37" N, Longitude 088° 31' 04.71"W on NOS Chart 11375, 36th edition was disproved with single beam hydro. Recommend note Shoaling 1969 be removed and soundings in commend area be charted.

b. A charted note Shoaling 1969 in Latitude 30° 17' 37.55" N, Longitude 088° 31' 51.06"W on NOS Chart 11375, 36th edition was not disproved. No hydrography was done in the shoaling area. Recommend retaining note Shoaling 1969 .

c. Charted notes Shoaling 1969 in two locations on NOS Chart 11375, 36th edition. One is located in Latitude 30° 19' 27.95" N, Longitude 088° 30' 37.75"W, and the other is located in Latitude 30° 19' 31.97" N, Longitude 088° 30' 51.75"W. The survey is lacking bathymetric coverage in both of these two areas. Recommend both of these two chart notations remain as charted.

d. Tabulated channel depth limits for the Upper Pascagoula Channel has been exceeded as a result of H11385 survey depths. The tabulated limits are documented as 33.8-ft for the left outside quarter for this reach. H11385 sounding selections contain two depths that are shoaler than the tabulated limits. A 32-ft sounding is located at 30°17'19.512"W, 088°30'56.89"W, and a 33-ft sounding is located at 30°17'19.008"N, 088°30'55.985"W. AHB recommends to reference USACE channel surveys that were conducted after 2005. If no later date USACE surveys exist, AHB recommends to revise the tabulated limits to 32.7-ft. AHB recommends to defer the final tabulated limits to MCD/NDB. Reference image on the following page.



D2. ADDITIONAL RESULTS

D.2.1. Aids to Navigation

The field positioned all navigational aids during the present survey. A complete listing can be found in the PYDRO generated ATON Report appended to the Descriptive Report. All of these aids are charted on the current edition of NOS chart 11375 and ENC's US4MS12M, US5MS21M, and US5MS22M within the limits of the present survey. These appear to be marking the safe route for passage through Bayou Cassotte into the Lower Pascagoula Channel. One Private Maintain aid marking Pipeline located in Latitude 30° 16' 40.89" N, Longitude 088° 30' 34.54" W was not charted. AHB recommends deferring the charting disposition of these navigational aids to Marine Chart Division, Nautical Data Branch.

D.3. MISCELLANEOUS

Chart compilation was done by Atlantic Hydrographic Branch personnel, in Norfolk, Virginia. Compilation data will be forwarded to Marine Chart Division, Silver Spring, Maryland. See Section D.1. of this report for a list of the Raster Charts and Electronic Navigation Charts (ENC) used for compiling the present survey:

D.4. ADEQUACY OF SURVEY

The present survey is adequate to supersede the charted bathymetry within the common area. Any features not specifically addressed either in the H-Cell BASE Cell File or the Blue Notes should be retained as charted. Refer to the Descriptive Report for further recommendations by the hydrographer.

**APPROVAL SHEET
H11385**

Initial Approvals:

The completed survey has been inspected with regard to survey coverage, delineation of depth curves, representation of critical depths, cartographic symbolization, and verification or disproof of charted data. All revisions and additions made to the H-Cell files during survey processing have been entered in the digital data for this survey. The survey records and digital data comply with National Ocean Service and Office of Coast Survey requirements except where noted in the Descriptive Report and the Evaluation Report.

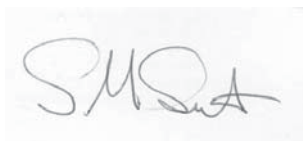
All final products have undergone a comprehensive reviews per the Hydrographic surveys Division Office Processing Manual and are verified to be accurate and complete except where noted.

Reginald L Keene Sr

Digitally signed by Reginald L Keene Sr
DN: cn=Reginald L Keene Sr, o=NOAA/NOS/DOC,
ou=Hydrographic Branch,
email=Reginald.L.Keene@NOAA.GOV, c=US
Date: 2008.12.16 10:52:52 -05'00'

Reginald L. Keene Sr.
Cartographer
Atlantic Hydrographic Branch

I have reviewed the H-Cell files, accompanying data, and reports. This survey and accompanying Marine Chart Division deliverables meet National Ocean Service requirements and standards for products in support of nautical charting except where noted.



Digitally signed by Shepard Smith
DN: cn=Shepard Smith, o=NOAA, ou=AHB,
email=shep.smith@noaa.gov, c=US
Date: 2008.12.16 13:06:07 -05'00'

Approved: _____

Shepard Smith
Lieutenant Commander, NOAA
Chief, Atlantic Hydrographic Branch