

H11398

NOAA FORM 76-35A	
U.S. DEPARTMENT OF COMMERCE NATIONAL OCEANIC AND ATMOSPHERIC ADMINISTRATION NATIONAL OCEAN SURVEY	
DESCRIPTIVE REPORT	
<i>Type of Survey:</i>	Basic Navigable Area
<i>Registry Number:</i>	H11398
LOCALITY	
<i>State:</i>	New York – New Jersey
<i>General Locality:</i>	Arthur Kill
<i>Sub-locality:</i>	Port Socony Reach to Elizabethport
2007	
CHIEF OF PARTY LT(jg) Matthew Jaskoski, NOAA	
DATE	LIBRARY & ARCHIVES

NOAA FORM 77-28 (11-72) <div style="text-align: right; margin-top: -10px;"> U.S. DEPARTMENT OF COMMERCE NATIONAL OCEANIC AND ATMOSPHERIC ADMINISTRATION </div>	REGISTRY NUMBER: <div style="text-align: center; font-size: 1.2em; font-weight: bold;">H11398</div>																																																																
<div style="font-size: 1.5em; font-weight: bold; margin-bottom: 10px;">HYDROGRAPHIC TITLE SHEET</div>																																																																	
INSTRUCTIONS: The Hydrographic Sheet should be accompanied by this form, filled in as completely as possible, when the sheet is forwarded to the Office.																																																																	
<table style="width: 100%; border: none;"> <tr> <td style="width: 30%;">State:</td> <td colspan="3">New York</td> </tr> <tr> <td>General Locality:</td> <td colspan="3">Arthur Kill</td> </tr> <tr> <td>Sub-Locality:</td> <td colspan="3">Port Socony to Elizabethport</td> </tr> <tr> <td>Scale:</td> <td>1:10,000</td> <td>Date of Survey:</td> <td>04/09/07 to 08/30/07</td> </tr> <tr> <td>Instructions Dated:</td> <td>01/05/05</td> <td>Project Number:</td> <td>OPR-B310-NRT5-07</td> </tr> <tr> <td>Change No.1 Dated:</td> <td colspan="3">N/A</td> </tr> <tr> <td>Change No.2 Dated:</td> <td colspan="3">N/A</td> </tr> <tr> <td>Vessel:</td> <td colspan="3">NOAA NRT-5, S3002</td> </tr> <tr> <td>Chief of Party:</td> <td colspan="3">LT(jg) Matthew Jaskoski, NOAA</td> </tr> <tr> <td>Surveyed by:</td> <td colspan="3">NOAA Navigation Response Team 5 Personnel</td> </tr> <tr> <td>Soundings by:</td> <td colspan="3">Kongsberg Simrad EM 3000 multibeam sonar</td> </tr> <tr> <td></td> <td colspan="3">Odom Echotrac CV/200</td> </tr> <tr> <td>Graphic record checked by:</td> <td colspan="3">N/A</td> </tr> <tr> <td>Protracted by:</td> <td>N/A</td> <td>Automated Plot:</td> <td>N/A</td> </tr> <tr> <td>Verification by:</td> <td colspan="3">Atlantic Hydrographic Branch Personnel</td> </tr> <tr> <td>Soundings in:</td> <td colspan="3">Meters at MLLW</td> </tr> </table>		State:	New York			General Locality:	Arthur Kill			Sub-Locality:	Port Socony to Elizabethport			Scale:	1:10,000	Date of Survey:	04/09/07 to 08/30/07	Instructions Dated:	01/05/05	Project Number:	OPR-B310-NRT5-07	Change No.1 Dated:	N/A			Change No.2 Dated:	N/A			Vessel:	NOAA NRT-5, S3002			Chief of Party:	LT(jg) Matthew Jaskoski, NOAA			Surveyed by:	NOAA Navigation Response Team 5 Personnel			Soundings by:	Kongsberg Simrad EM 3000 multibeam sonar				Odom Echotrac CV/200			Graphic record checked by:	N/A			Protracted by:	N/A	Automated Plot:	N/A	Verification by:	Atlantic Hydrographic Branch Personnel			Soundings in:	Meters at MLLW		
State:	New York																																																																
General Locality:	Arthur Kill																																																																
Sub-Locality:	Port Socony to Elizabethport																																																																
Scale:	1:10,000	Date of Survey:	04/09/07 to 08/30/07																																																														
Instructions Dated:	01/05/05	Project Number:	OPR-B310-NRT5-07																																																														
Change No.1 Dated:	N/A																																																																
Change No.2 Dated:	N/A																																																																
Vessel:	NOAA NRT-5, S3002																																																																
Chief of Party:	LT(jg) Matthew Jaskoski, NOAA																																																																
Surveyed by:	NOAA Navigation Response Team 5 Personnel																																																																
Soundings by:	Kongsberg Simrad EM 3000 multibeam sonar																																																																
	Odom Echotrac CV/200																																																																
Graphic record checked by:	N/A																																																																
Protracted by:	N/A	Automated Plot:	N/A																																																														
Verification by:	Atlantic Hydrographic Branch Personnel																																																																
Soundings in:	Meters at MLLW																																																																
Remarks: 1) <i>All Times are UTC.</i> 2) <i>This is a Basic Navigable Area Hydrographic Survey.</i> 3) <i>Projection is UTM Zone 18.</i> <i>Bold, Red, Italic notes were made during office processing.</i>																																																																	

TABLE OF CONTENTS

LIST OF FIGURES	4
LIST OF TABLES	4
A. AREA SURVEYED	5
B. DATA ACQUISITION AND PROCESSING	7
B.1 EQUIPMENT	7
B.2 QUALITY CONTROL	7
B.2.1 Side Scan SONAR Quality Control	7
B.2.2 Shallow Water Multibeam Quality Control	7
B.2.3 Total Propagated Error	8
B.2.4 Fieldsheet and Navigation Surfaces	8
B.2.5 Single Beam Quality Control	8
B.2.6 Crosslines	10
B.2.7 Junctions.	10
B.3 CORRECTIONS TO ECHO SOUNDINGS	10
C. VERTICAL AND HORIZONTAL CONTROL	11
C.1 VERTICAL CONTROL	11
C.2 HORIZONTAL CONTROL	11
D. RESULTS AND RECOMMENDATIONS	12
D.1 CHART COMPARISON	12
D.1.1 General Agreement with Charted soundings	12
D.1.2 AWOIS Items and Significant Contacts	12
D.1.3 Dangers to Navigation (DToN's)	12
D.1.4 Charted Features	13
D.1.5 Charting Recommendations	13
D.2 ADDITIONAL RESULTS	13
D.2.1 Aids to Navigation	13
D.2.2 Bridges and Overhead Cables	13
D.2.3 Submarine Cables and Pipelines	13
E. APPROVAL SHEET	14
APPENDICES	
Appendix I – DToN Report	
Appendix II– Survey Features Report	
Appendix III– Progress Sketch	
Appendix IV– Tides and Water Levels	
Appendix V– Supplemental Survey records and Correspondence	

LIST OF FIGURES

FIGURE A-1: Overview of survey Area	6
FIGURE B-1: Caris QC Report, IHO order Oneness v. Beam Number	10

LIST OF TABLES

TABLE B-1: Total Propagated Error parameters	8
TABLE B-2: Fieldsheets, surfaces and surface resolutions	9

DESCRIPTIVE REPORT
to accompany
HYDROGRAPHIC SURVEY H11398

Scale of Survey: 1:10,000
Year of Survey: 2007
NOAA Navigational Response Team 5
LT(jg) Matthew Jaskoski, OIC

A. AREA SURVEYED

This hydrographic survey was conducted in accordance with Hydrographic Survey Letter Instructions for project OPR-B310-NRT5-04, H11398 New York, NY*. The original instructions are dated January 5, 2005.

This Descriptive Report pertains to an area of approximately 3.52 SNM, of Arthur Kill from Elizabethport in the north to Port Socony in the South. The assigned registry number for this sheet is H11398, as prescribed in the Letter Instructions*.

The purpose of the CY 2007 operations in this area were to provide contemporary surveys to update National Ocean Service (NOS) nautical charts as the Port of New York & New Jersey and approaches have been designated critical survey areas..

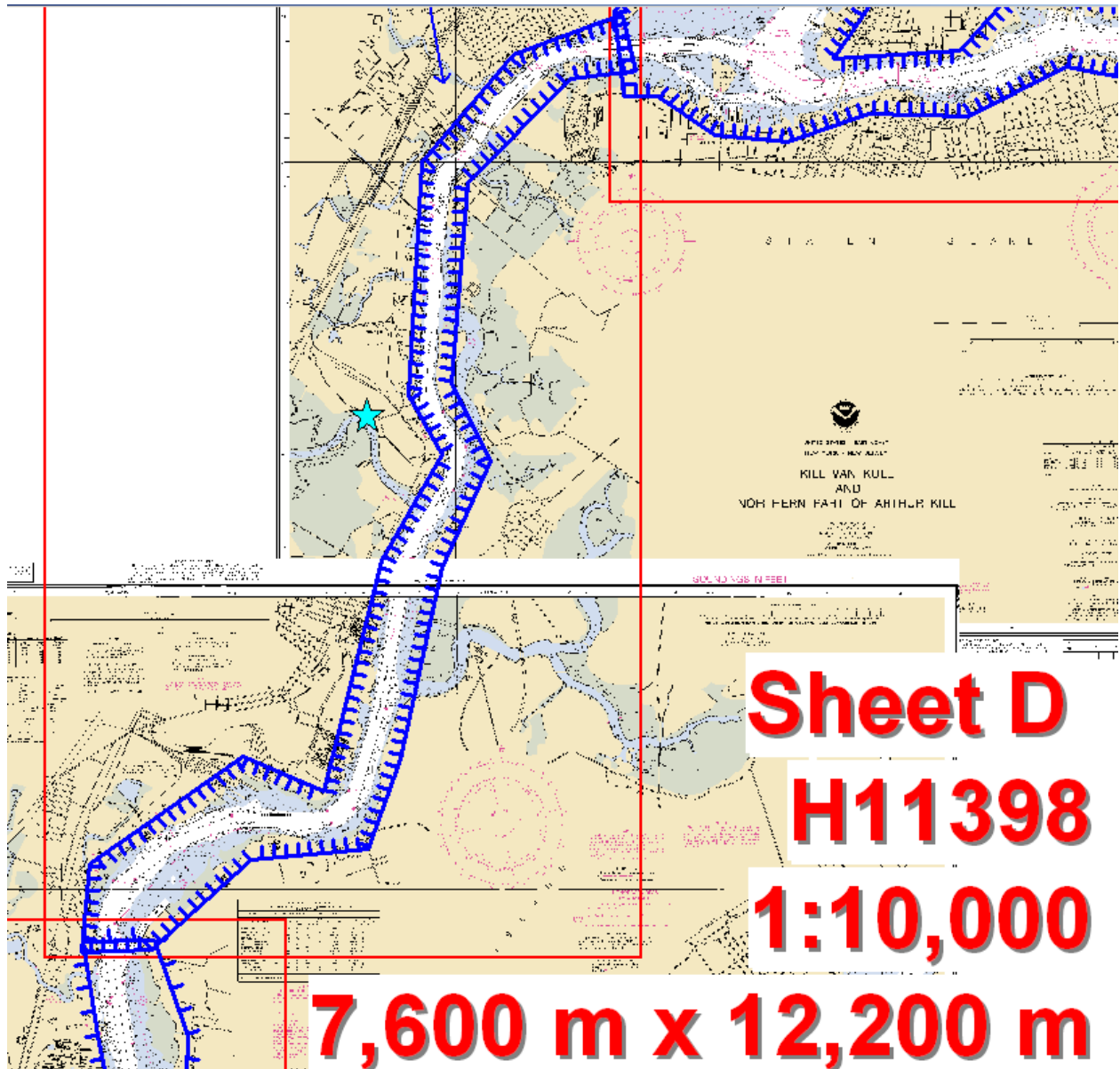
For complete survey limits, see figure A-1 on the following page.

Linear nautical miles of single beam only sounding lines - mainscheme only	27.9
Linear nautical miles of multibeam only sounding lines - mainscheme only	78.1
Linear nautical miles of side scan sonar only lines - mainscheme only	26.1
Linear nautical miles of any combination of the above techniques	26.1
Linear nautical miles of crosslines from single beam and multibeam combined	13.5
Linear nautical miles of developments other than mainscheme lines	1.5
Linear nautical miles of shoreline/nearshore investigation	0
Number of bottom samples collected	0
Number of items investigated that required additional time/effort in the field beyond the above survey operations	0
Total square nautical miles	3.52

Dates of acquisition: April 09, 2007 to August 30, 2007

**Data filed with original field records.*

Figure A-1: Outline of survey area



B. DATA ACQUISITION AND PROCESSING *See also the Evaluation Report.*

B.1 EQUIPMENT

Data were acquired by NOAA NRT-5 S3002. NOAA Survey Vessel S3002 is an approximately 9.12-meter aluminum SeaArk outboard driven vessel with an average multibeam transducer draft of 1.3 meters. *Concur*

NOAA S3002 acquired both bathymetry and imagery data in the project area. Side scan sonar data were acquired with a towed Klein 3000 sonar system (SSS). Bathymetry data were acquired with both an Odom Echotrac C/V 200 vertical beam echosounder (VBES), and a Kongsberg Simrad EM 3000 multibeam echosounder (MBES). Positioning and attitude were determined with a TSS POS/MV 320 (version 4) GPS aided inertial navigation system. *Concur*

Following repair work to the MBES support arm, a patch test was conducted on DN 193. Data collected after this date have the values from this patch test applied to them. Refer to the 2007 Data Acquisition and Processing Report (DAPR) * for detailed equipment and vessel configuration information. *Concur*

**Data filed with original field records.*

B.2 QUALITY CONTROL

B.2.1 Side Scan Sonar Quality Control

Daily confidence checks were made by observing the outer ranges of the side scan sonar images. A good check consisted of distinguishing linear contacts across the entire range of the side scan trace. Navigation data were reviewed, fliers were rejected with interpolation. No unusual problems were encountered. *Concur.*

In accordance with the project instructions, 200% SSS bottom coverage was collected for this survey project at 75 m range scale. A mosaic was created at 1 meter resolution for submission (Table B-2). *Concur.*

B.2.2 Multibeam Echosounder Quality Control

Multibeam echosounder data were acquired at 100% coverage for; SSS contact development, and areas deemed navigationally significant by the hydrographer. In shallow areas, approximately 3m water depth, there was a noticeable data dropout. Areas of data dropout were generally less than 0.5m in the along track. This was observed to be a systemic error that has persisted over the use of the EM3000 and has been noted on other field units using the EM3000. The dropout was mitigated by manually overriding the maximum ping rate of the sonar. Data meets along track resolution requirements for IHO order 1. On DN 2007_115 Line 073_1416 showed signs of a heave artifact in the data. The error was approximately 0.1-0.15m from peak

to trough. This error is less than the allowable maximum heave error of 0.20m, and the line was not rejected from the dataset. On DN 100 a sound speed cast was rejected as erroneous. Due to this rejection MBES data collected on this day were rejected from the dataset. Other than the above, there were no faults with the MBES system which effected data integrity. Navigation data were reviewed, any fliers were rejected with interpolation. Portions of lines had navigation data lapses and were rejected breaking interpolation. The lines with portions of the line rejected were DN 2007_109 line 059_1541, DN 2007_115 line 069_1313, DN 2007_136 line 062_1626, DN 2007_141 line 027_1746. For detailed discussion of MBES system calibrations, data acquisition, and data processing refer to this project's DAPR. *Concur.*

B.2.3 Total Propagated Error

Total Propagated Error (TPE) parameters for sound speed and tide data for H11398 are shown in table B-1. The estimated tidal error contribution to the total survey error budget in the vicinity of New York Harbor is 0.21meters at the 95% confidence level; this value includes the estimated gauge measurement error, tidal datum computation error, and tidal zoning error as provided by CO-OPS. The 1- σ value applied in post-processing was 0.105 meters. Sound speed TPE values were used in accordance with HSTP guidelines regarding frequency of surface and water column sound speed measurements. *Concur.*

Table B-1. Total Propagated Error parameters.

Total Propagated Error Values			
Tide Values		Sound Speed Values	
Measured	Zoning	Measured	Surface
0.0	0.105	4.0	0.2

B.2.4 Fieldsheets and Navigation Surfaces

Caris HIPS uncertainty weighted BASE surfaces were created for this project. For MBES data surfaces were created and submitted at 0.75m resolution. An uncertainty weighted BASE surface was created for VBES data at 5.00m resolution. Based on Caris generated QC reports (see sec B.2.5) beams 125-127 were filtered out of the processed data, and are not included in the base surfaces. The MBES BASE surface finalized weighted grid is included in the digital preliminary smooth sheet. Table B-2 lists all surfaces submitted with this survey. *Concur.*

B.2.5 Single Beam Quality Control

Navigation data were reviewed, fliers were rejected with interpolation. On DN 100 a sound speed cast was rejected as erroneous. Due to this rejection there was a five day gap between a useable cast and data collected on DN 100, VBES data agreed with previous day's data and were

not rejected from the dataset. Other than the above there were no unusual events associated with the collection of the Single Beam data for this project. *Concur.*

Refer to this project's DAPR* for detailed discussion of VBES system calibrations, data acquisition, and data processing. *Concur.*

Table B-2: H11398 bathymetry surfaces, and Side Scan mosaic resolutions.

H11398 Bathymetry surfaces and SSS mosaic			
Fieldsheet	Surface/Mosaic Name	Grid Type	Resolution
H11398	H11398_MBES_BASE_75cm	Uncertainty Weighted	0.75m
H11398	H11398_MBES_BASE_75cm_Final	Uncertainty Weighted	0.75m
H11398	H11398_VBES_BASE_5m	Uncertainty Weighted	5.00m
H11398	H11398_VBES_BASE_5m_Final	Uncertainty Weighted	5.00m
H11398	H11398_1m	SSS Mosaic	1.00m

B.2.6 Crosslines

Approximately 13.5 linear NM of crosslines were acquired, this is 13% of the combined MBES and VBES mainscheme bathymetry linear NM. A total of 7.24 linear NM of MBES crosslines were run; this was approximately 9% of the total linear NM of MBES lines run. A visual examination of approximately 10% of crossline-mainsheme common areas showed general agreement between crosslines and mainscheme lines to within 1-2 feet. With the exception of the outermost beams (125-127), all beams met 90% order one-ness, please refer to the separates* section of this report for Caris generated QC tables. A total of 6.24 linear NM of VBES crosslines were run; this was approximately 17% of the total linear NM of VBES lines run. Visual comparison junction areas showed general agreement to within 1-2 feet between crosslines and mainscheme VBES lines. For a list of all crosslines acquired for this project, tabulated by DN and line file name, please refer to the processing logs located in the separates* section of this report. *Concur.*

B.2.7 Junctions *See also the Evaluation Report.*

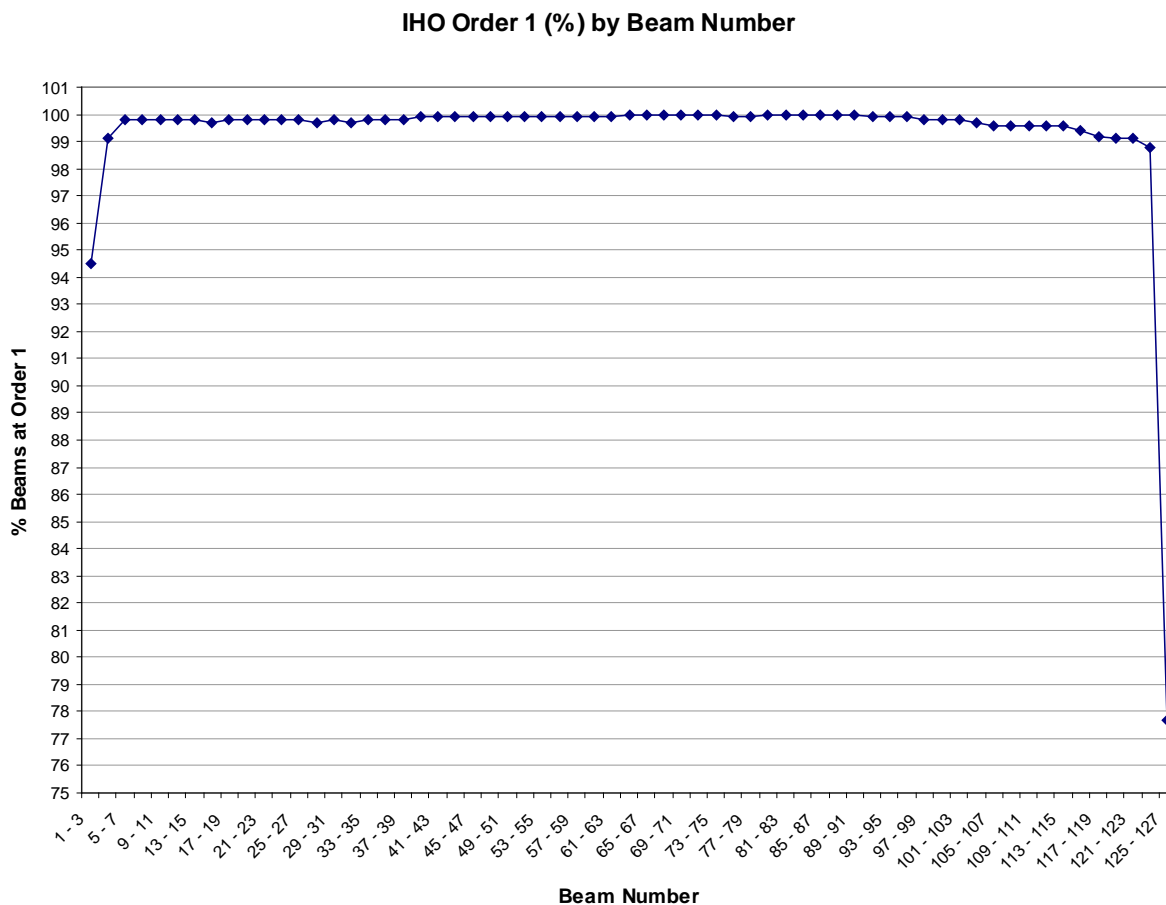
Survey H11398 junctions with contemporary surveys H11399, and H11397. Visual examination of all junction areas showed agreement between bathymetry data to within less than 1 ft. *Concur.*

**Data filed with original field records.*

B.3 CORRECTIONS TO ECHO SOUNDING

All methods or instruments used were as described in the project DAPR*. All sound velocity casts are included in the digital preliminary smooth sheet. *Concur.*

Figure B-1: Caris QC report, IHO order oneness v Beam Number note outer beams 125-127.



**Data filed with original field records.*

C. VERTICAL AND HORIZONTAL CONTROL *See also the Evaluation Report.*

C.1 VERTICAL CONTROL

The tidal datum for this project is Mean Lower Low Water (MLLW). The operating National Water Level Observation Network (NWLON) station at The Battery (851-8750) served as datum control for the survey area. *Concur.*

A Request for Approved Tides was sent to N/OPS1 on February 26, 2008 (Appendix III*). Verified tides from the N/OPS1 CO-OPS website were downloaded and applied to all sounding data. *Preliminary tide and zoning were accepted as final tides and applied by the field unit.*

C.2 HORIZONTAL CONTROL

The horizontal datum used for this survey is the North American Datum of 1983 (NAD 83), projected using UTM zone 18. *Concur.*

Sounding positional control was determined using the Global Positioning System (GPS) corrected by U.S. Coast Guard differential GPS (DGPS) beacon stations. The DGPS beacon used for this survey was Sandy Hook, NJ. No horizontal control stations were established for this survey. *Concur.*

Horizontal dilution of precision (HDOP) was monitored during acquisition, and did not exceed 4.00. Adequate satellite coverage was maintained throughout the survey period. *Concur.*

**Data filed with original field records.*

D. RESULTS AND RECOMMENDATIONS *See also the Evaluation Report.*

D.1 CHART COMPARISON

The charts affected by this survey are:

<i>Chart Number</i>	<i>Edition</i>	<i>Edition Date</i>	<i>Scale</i>
12327	100th	07/01/2007	1:40000
12331	31st	07/01/2005	1:15000
12333	35th	08/01/2007	1:15000

<i>ENC Cell Name</i>
US5NJ11M
US5NJ13M

D.1.1 General Agreement with Charted soundings

Sounding data generally agreed with charted depths to within 1-2 feet, navigationally significant differences from charted depths are addressed in Appendix II. *Concur.*

D.1.2 AWOIS Items and Significant Contacts

There were ~~ten~~ *eleven* AWOIS items within the survey limits of H11398. Of these ten, ~~eight~~ *nine* (AWOIS: 12542, 12543, 12545, 12546, 12548, 12549, 12552, and 12553) were located inshore of the NALL and could not be fully investigated. Of two remaining AWOIS items 12537 was recommend by the hydrographer to be retained as charted, and 12541 was recommended to be moved to reflect current data. For full description and hydrographer recommendations of all assigned AWOIS items see Appendix II. *Concur.*

D.1.3 Dangers to Navigation

Five DToN's were submitted for H11398. One DToN was submitted on August 24, 2007. Four more DToNs were submitted on January 10, 2008. For full description and hydrographer recommendations of the DToN see Appendix I and II *Concur*
Two additional DTONs were submitted by AHB.

D.1.4 Charted Features

Hydrographer recommended changes to charted items are listed in Appendix II of this report as well as in the digital preliminary smooth sheet. All charted items not specifically addressed in Appendix II are recommended to be retained as charted by the hydrographer. *Concur.*

D.1.5 Charting Recommendations

Hydrographer recommendations for discreet items are included in Appendix II of this report as well as in the digital preliminary smooth sheet. Survey H11398 is complete and adequate to supersede charted soundings in their common areas. *Concur.*

D.2 ADDITIONAL RESULTS

D.2.1 Aids to Navigation

Four incorrectly charted AToNs (Gulfport Pile Light A, B, C, and D) were submitted as DToNs on January 10, 2008. No other AToNs within the survey limits of H11398 were found to be significantly off station. See Appendix V*, section V.3. *Concur.*

D.2.2 Bridges and Overhead Cables

There are two bridges and one overhead cable in the survey area. Navigation data were not adversely affected while crossing under overhead objects, and the hydrographer has no charting recommendations regarding these items. *Concur.*

D.2.3 Submarine Cables and Pipelines

There are seven charted submarine cable and pipeline areas. No pipelines or cables were positioned during this survey, nor were any images of these items acquired on SSS. *Concur.*

**Data filed with original field records.*

E. APPROVAL SHEET

**OPR-B310
Arthur Kill
New York**

**Port Socony to Elizabethport
Survey Registry No. H11398**


Field operations for this survey were conducted under my daily supervision with frequent checks of progress and adequacy. All field sheets, bathymetry models, this Descriptive Report, and all accompanying records and data are approved.

Submitted in association with this descriptive report has been a series of reports and data:

2007 Data Acquisition and Processing Report (submitted with this report)
No HVCR submission was required for this survey

This survey is adequate to supersede all prior surveys in common areas, and for application to the relevant NOS nautical charts.

Respectfully,

 Matthew Jaskoski
2008.05.12 12:48:11
-04'00'

LT(jg) Matthew Jaskoski, NOAA
OIC NRT-5

APPENDIX I
DANGERS TO NAVIGATION REPORT

H11398 - Dangers to Navigation

Registry Number: H11398
State: New Jersey
Locality: Arthur Kill
Sub-locality: Port Socony Reach to Elizabethport
Project Number: OPR-B310-NRT5-07
Survey Dates: 04/09/2007 - 01/08/2008

Charts Affected

Number	Edition	Date	Scale (RNC)	RNC Correction(s)*
12331	31st	07/01/2005	1:15,000 (12331_1)	USCG LNM: 03/04/2008 (04/15/2008) CHS NTM: None (01/25/2008) NGA NTM: 02/27/1999 (04/26/2008)
12333	35th	08/01/2007	1:15,000 (12333_1)	NGA NTM: 05/24/2008 (05/31/2008)
12327	100th	07/01/2007	1:40,000 (12327_1)	[L]NTM: ?
12300	46th	07/01/2007	1:400,000 (12300_1)	[L]NTM: ?
5161	13th	10/01/2003	1:1,058,400 (5161_1)	[L]NTM: ?
13003	49th	04/01/2007	1:1,200,000 (13003_1)	[L]NTM: ?
14500	27th	10/01/2002	1:1,500,000 (14500_1)	[L]NTM: ?

* Correction(s) - source: last correction applied (last correction reviewed--"cleared date")

Features

No.	Name	Feature Type	Survey Depth	Survey Latitude	Survey Longitude	AWOIS Item
1.1	352/2 Wreck	Wreck	4.29 m	40° 33' 23.3" N	074° 13' 16.1" W	---
1.2	Gulfport Pile Light A	Shoal	[None]	40° 37' 38.8" N	074° 12' 15.7" W	---
1.3	Gulfport Pile Light C	Shoal	[None]	40° 37' 40.9" N	074° 12' 14.7" W	---
1.4	Gulfport Pile Light D	Shoal	[None]	40° 37' 41.3" N	074° 12' 14.7" W	---
1.5	DtoN - Shoaling in Channel	Shoal	10.53 m	40° 38' 35.9" N	074° 11' 24.7" W	---
1.6	DtoN - Shoaling in Channel	Shoal	10.98 m	40° 38' 33.3" N	074° 11' 28.2" W	---

1.1) 352/2 Wreck

DANGER TO NAVIGATION

Survey Summary

Survey Position: 40° 33' 23.3" N, 074° 13' 16.1" W
Least Depth: 4.29 m (= 14.07 ft = 2.345 fm = 2 fm 2.07 ft)
TPU ($\pm 1.96\sigma$): **THU (TPEh)** ± 1.969 m ; **TVU (TPEv)** ± 0.333 m
Timestamp: 2007-136.16:01:47.515 (05/16/2007)
Survey Line: h11398 / 3002_mbes / 2007-136 / 020_1600
Profile/Beam: 352/2
Charts Affected: 12331_1, 12327_1, 12300_1, 5161_1, 13003_1, 14500_1

Remarks:

The object is a wreck on the edge of a foul area, directly under a charted 20 and charted 30 foot sounding, there is a large number of visible wrecks in the immediate vicinity of the wreck.

Feature Correlation

Address	Feature	Range	Azimuth	Status
h11398/3002_mbes/2007-136/020_1600	352/2	0.00	000.0	Primary
h11398/3002_mbes/2007-136/017_1553	2628/115	63.94	241.1	Secondary (grouped)

Hydrographer Recommendations

The hydrographer recommends the object be charted as a dangerous wreck in location of designated sounding, least depth of 14 feet. -bsh

Cartographically-Rounded Depth (Affected Charts):

14ft (12331_1, 12327_1)
 2 ¼fm (12300_1, 13003_1, 14500_1)
 4.3m (5161_1)

S-57 Data

Geo object 1: Wreck (WRECKS)
Attributes: CATWRK - 2:dangerous wreck
 CONVIS - 1:visual conspicuous

SORDAT - 20070516

VALSOU - 4.288 m

VERDAT - 12:Mean lower low water

WATLEV - 3:always under water/submerged

Office Notes

Concur with clarification - Chart a wreck with a depth of 14 feet in Latitude 40° 33' 23.3" N, Longitude 074° 13' 16.1" W.
Chart 14 Wk and danger curve.

Feature Images

1.2) Gulfport Pile Light A

DANGER TO NAVIGATION

Survey Summary

Survey Position: 40° 37' 38.8" N, 074° 12' 15.7" W
Least Depth: [None]
TPU ($\pm 1.96\sigma$): THU (TPEh) [None] ; TVU (TPEv) [None]
Timestamp: 2008-008.13:49:07.000 (01/08/2008)
DP Dataset: h11398 / 3002_vbes / 2008-008 / h11398_shorelinetgt
Profile/Beam: 3/1
Charts Affected: 12333_1, 12327_1, 12300_1, 5161_1, 13003_1, 14500_1

Remarks:

The object is a charted light incorrectly positioned on the chart, DP taken on dol.

Feature Correlation

Address	Feature	Range	Azimuth	Status
h11398/3002_vbes/2008-008/h11398_shorelinetgt	3/1	0.00	000.0	Primary
ChartGPs - ENC US5NJ13M	AToN 69	38.50	306.9	Secondary (grouped)

Hydrographer Recommendations

The hydrographer recommends the charted light be moved to surveyed location.

S-57 Data

Geo object 1: Light (LIGHTS)
Attributes: COLOUR - 1:white
 LITCHR - 1:fixed
 SORDAT - 20080108

Office Notes

This is a USCG maintained light. The position has been updated on the chart. No further handling required.

1.3) Gulfport Pile Light C

DANGER TO NAVIGATION

Survey Summary

Survey Position: 40° 37' 40.9" N, 074° 12' 14.7" W
Least Depth: [None]
TPU ($\pm 1.96\sigma$): THU (TPEh) [None] ; TVU (TPEv) [None]
Timestamp: 2008-008.13:50:38.000 (01/08/2008)
DP Dataset: h11398 / 3002_vbes / 2008-008 / h11398_shorelinetgt
Profile/Beam: 5/1
Charts Affected: 12333_1, 12327_1, 12300_1, 5161_1, 13003_1, 14500_1

Remarks:

The object is a charted light incorrectly positioned on the chart, DP taken on dol.

Feature Correlation

Address	Feature	Range	Azimuth	Status
h11398/3002_vbes/2008-008/h11398_shorelinetgt	5/1	0.00	000.0	Primary
ChartGPs - ENC US5NJ13M	AToN 71	30.93	284.1	Secondary (grouped)

Hydrographer Recommendations

The hydrographer recommends the charted light be moved to surveyed location.

S-57 Data

Geo object 1: Light (LIGHTS)
Attributes: COLOUR - 1:white
 LITCHR - 1:fixed
 SORDAT - 20080108

Office Notes

This is a USCG maintained light. The position has been updated on the chart. No further handling required.

1.4) Gulfport Pile Light D

DANGER TO NAVIGATION

Survey Summary

Survey Position: 40° 37' 41.3" N, 074° 12' 14.7" W
Least Depth: [None]
TPU ($\pm 1.96\sigma$): THU (TPEh) [None] ; TVU (TPEv) [None]
Timestamp: 2008-008.13:51:22.000 (01/08/2008)
DP Dataset: h11398 / 3002_vbes / 2008-008 / h11398_shorelinetgt
Profile/Beam: 6/1
Charts Affected: 12333_1, 12327_1, 12300_1, 5161_1, 13003_1, 14500_1

Remarks:

The object is a charted light incorrectly positioned on the chart, DP taken on dol.

Feature Correlation

Address	Feature	Range	Azimuth	Status
h11398/3002_vbes/2008-008/h11398_shorelinetgt	6/1	0.00	000.0	Primary
ChartGPs - ENC US5NJ13M	AToN 72	29.77	252.7	Secondary (grouped)

Hydrographer Recommendations

The hydrographer recommends the charted light be moved to surveyed location.

S-57 Data

Geo object 1: Light (LIGHTS)
Attributes: COLOUR - 1:white
 LITCHR - 1:fixed
 SORDAT - 20080108

Office Notes

This is a USCG maintained light. The position has been updated on the chart. No further handling required.

1.5) DtoN - Shoaling in Channel

DANGER TO NAVIGATION

Survey Summary

Survey Position: 40° 38' 35.9" N, 074° 11' 24.7" W
Least Depth: 10.53 m (= 34.55 ft = 5.758 fm = 5 fm 4.55 ft)
TPU ($\pm 1.96\sigma$): **THU (TPEh)** ± 1.978 m ; **TVU (TPEv)** ± 0.258 m
Timestamp: 2007-099.13:15:27.784 (04/09/2007)
Survey Line: h11398 / 3002_vbes / 2007-099 / 003_1308
Profile/Beam: 1758/1
Charts Affected: 12333_1, 12327_1, 12300_1, 5161_1, 13003_1, 14500_1

Remarks:

This sounding marks the shoalest point of a ridge inside the ACOE channel.

Feature Correlation

Address	Feature	Range	Azimuth	Status
h11398/3002_vbes/2007-099/003_1308	1758/1	0.00	000.0	Primary

Hydrographer Recommendations

[None]

Cartographically-Rounded Depth (Affected Charts):

34ft (12333_1, 12327_1)

5 $\frac{3}{4}$ fm (12300_1, 13003_1, 14500_1)

10.5m (5161_1)

S-57 Data

Geo object 1: Sounding (SOUNDG)
Attributes: QUASOU - 1:depth known
 TECSOU - 1:found by echo-sounder

Office Notes

Chart 34 ft depth in channel.

1.6) DtoN - Shoaling in Channel

DANGER TO NAVIGATION

Survey Summary

Survey Position: 40° 38' 33.3" N, 074° 11' 28.2" W
Least Depth: 10.98 m (= 36.02 ft = 6.003 fm = 6 fm 0.02 ft)
TPU ($\pm 1.96\sigma$): **THU (TPEh)** ± 1.980 m ; **TVU (TPEv)** ± 0.259 m
Timestamp: 2007-099.13:15:59.245 (04/09/2007)
Survey Line: h11398 / 3002_vbes / 2007-099 / 003_1308
Profile/Beam: 1888/1
Charts Affected: 12333_1, 12327_1, 12300_1, 5161_1, 13003_1, 14500_1

Remarks:

This point marks the southern portion of the ridge of shoaling in the ACOE channel.

Feature Correlation

Address	Feature	Range	Azimuth	Status
h11398/3002_vbes/2007-099/003_1308	1888/1	0.00	000.0	Primary

Hydrographer Recommendations

[None]

Cartographically-Rounded Depth (Affected Charts):

36ft (12333_1, 12327_1)

6fm (12300_1, 13003_1, 14500_1)

11.0m (5161_1)

S-57 Data

Geo object 1: Sounding (SOUNDG)
Attributes: QUASOU - 1:depth known
 TECSOU - 1:found by echo-sounder

Office Notes

Chart 36 ft depth in channel.

H11398 DToN Report #2

Registry Number: H11398
State: NY
Locality: Arthur Kill
Sub-locality: Port Socony Reach to Elizabethport
Project Number: OPR-B310-NRT5-07
Survey Date: 01/08/2008

Charts Affected

Number	Version	Date	Scale
12333	34th Ed.	12/01/2005	1:15000
12327	98th Ed.	09/01/2005	1:40000
12300	45th Ed.	03/01/2005	1:400000
5161	13th Ed.	10/01/2003	1:1058400
13003	48th Ed.	10/01/2004	1:1200000
14500	27th Ed.	10/01/2002	1:1500000

Features

No.	Name	Feature Type	Survey Depth	Survey Latitude	Survey Longitude
1.1	Gulfport Pile Light A	Sounding	[None]	40° 37' 38.768" N	074° 12' 15.730" W
1.2	Gulfport Pile Light B	Sounding	[None]	40° 37' 39.121" N	074° 12' 15.347" W
1.3	Gulfport Pile Light C	Sounding	[None]	40° 37' 40.863" N	074° 12' 14.724" W
1.4	Gulfport Pile Light D	Sounding	[None]	40° 37' 41.312" N	074° 12' 14.656" W

1.1) Gulfport Pile Light A

DANGER TO NAVIGATION

Survey Summary

Survey Position: 40° 37' 38.768" N, 074° 12' 15.730" W
Least Depth: [None]
Timestamp: 2008-008.13:49:07.000 (01/08/2008)
DP Dataset: h11398 / 3002_vbes / 2008-008 / h11398_shorelinetgt
Profile/Beam: 3/1
Charts Affected: 12333_1, 12327_1, 12300_1, 5161_1, 13003_1, 14500_1

Remarks:

The object is a charted light incorrectly positioned on the chart, DP taken on dol.

Feature Correlation

Address	Feature	Range	Azimuth	Status
h11398/3002_vbes/2008-008/h11398_shorelinetgt	3/1	0.00	000.0	Primary
ChartGPs - ENC US5NJ13M	AToN 69	38.50	306.9	Secondary (grouped)

Hydrographer Recommendations

The hydrographer recommends the charted light be moved to surveyed location.

S-57 Data

Geo object 1: Light (LIGHTS)
Attributes: COLOUR - 1:white
LITCHR - 1:fixed
SORDAT - 20080108

This is a USCG maintained light. The position has been updated on the chart. No further handling required.

1.2) Gulfport Pile Light B

DANGER TO NAVIGATION

Survey Summary

Survey Position: 40° 37' 39.121" N, 074° 12' 15.347" W
Least Depth: [None]
Timestamp: 2008-008.13:49:45.000 (01/08/2008)
DP Dataset: h11398 / 3002_vbes / 2008-008 / h11398_shorelinetgt
Profile/Beam: 4/1
Charts Affected: 12333_1, 12327_1, 12300_1, 5161_1, 13003_1, 14500_1

Remarks:

The object is a charted light incorrectly positioned on the chart, DP taken on dol.

Feature Correlation

Address	Feature	Range	Azimuth	Status
h11398/3002_vbes/2008-008/h11398_shorelinetgt	4/1	0.00	000.0	Primary
ChartGPs - ENC US5NJ13M	AToN 70	37.29	263.4	Secondary (grouped)

Hydrographer Recommendations

The hydrographer recommends the charted light be moved to surveyed location.

S-57 Data

Geo object 1: Light (LIGHTS)
Attributes: COLOUR - 1:white
LITCHR - 1:fixed
SORDAT - 20080108

This is a USCG maintained light. The position has been updated on the chart. No further handling required.

1.3) Gulfport Pile Light C

DANGER TO NAVIGATION

Survey Summary

Survey Position: 40° 37' 40.863" N, 074° 12' 14.724" W
Least Depth: [None]
Timestamp: 2008-008.13:50:38.000 (01/08/2008)
DP Dataset: h11398 / 3002_vbes / 2008-008 / h11398_shorelinetgt
Profile/Beam: 5/1
Charts Affected: 12333_1, 12327_1, 12300_1, 5161_1, 13003_1, 14500_1

Remarks:

The object is a charted light incorrectly positioned on the chart, DP taken on dol.

Feature Correlation

Address	Feature	Range	Azimuth	Status
h11398/3002_vbes/2008-008/h11398_shorelinetgt	5/1	0.00	000.0	Primary
ChartGPs - ENC US5NJ13M	AToN 71	30.93	284.1	Secondary (grouped)

Hydrographer Recommendations

The hydrographer recommends the charted light be moved to surveyed location.

S-57 Data

Geo object 1: Light (LIGHTS)
Attributes: COLOUR - 1:white
 LITCHR - 1:fixed
 SORDAT - 20080108

This is a USCG maintained light. The position has been updated on the chart. No further handling required.

1.4) Gulfport Pile Light D

DANGER TO NAVIGATION

Survey Summary

Survey Position: 40° 37' 41.312" N, 074° 12' 14.656" W
Least Depth: [None]
Timestamp: 2008-008.13:51:22.000 (01/08/2008)
DP Dataset: h11398 / 3002_vbes / 2008-008 / h11398_shorelinetgt
Profile/Beam: 6/1
Charts Affected: 12333_1, 12327_1, 12300_1, 5161_1, 13003_1, 14500_1

Remarks:

The object is a charted light incorrectly positioned on the chart, DP taken on dol.

Feature Correlation

Address	Feature	Range	Azimuth	Status
h11398/3002_vbes/2008-008/h11398_shorelinetgt	6/1	0.00	000.0	Primary
ChartGPs - ENC US5NJ13M	AToN 72	29.77	252.7	Secondary (grouped)

Hydrographer Recommendations

The hydrographer recommends the charted light be moved to surveyed location.

S-57 Data

Geo object 1: Light (LIGHTS)
Attributes: COLOUR - 1:white
LITCHR - 1:fixed
SORDAT - 20080108

This is a USCG maintained light. The position has been updated on the chart. No further handling required.

H11398 AHB DToN Report #3

Registry Number: H11398
State: New Jersey
Locality: Arthur Kill
Sub-locality: Port Socony Reach to Elizabethport
Project Number: OPR-B310-NRT5-07
Survey Date: 04/10/2007

Charts Affected

Number	Edition	Date	Scale (RNC)	RNC Correction(s)*
12333	35th	08/01/2007	1:15,000 (12333_1)	NGA NTM: 05/24/2008 (05/31/2008)
12327	100th	07/01/2007	1:40,000 (12327_1)	[L]NTM: ?
12300	46th	07/01/2007	1:400,000 (12300_1)	[L]NTM: ?
5161	13th	10/01/2003	1:1,058,400 (5161_1)	[L]NTM: ?
13003	49th	04/01/2007	1:1,200,000 (13003_1)	[L]NTM: ?
14500	27th	10/01/2002	1:1,500,000 (14500_1)	[L]NTM: ?

* Correction(s) - source: last correction applied (last correction reviewed--"cleared date")

Features

No.	Name	Feature Type	Survey Depth	Survey Latitude	Survey Longitude	AWOIS Item
1.1	30-ft SOUND Elizabethport Reach 540/34	Shoal	9.14 m	40° 38' 38.1" N	074° 11' 21.9" W	---

1.1) 30-ft SOUND Elizabethport Reach 540/34**DANGER TO NAVIGATION****Survey Summary**

Survey Position: 40° 38' 38.1" N, 074° 11' 21.9" W
Least Depth: 9.14 m (= 30.00 ft = 5.000 fm = 4 fm 6.00 ft)
TPU ($\pm 1.96\sigma$): **THU (TPEh)** ± 1.965 m ; **TVU (TPEv)** ± 0.247 m
Timestamp: 2007-100.15:41:04.525 (04/10/2007)
Survey Line: h11398 / 3002_mbes / 2007-100 / 009_1539
Profile/Beam: 540/34
Charts Affected: 12333_1, 12327_1, 12300_1, 5161_1, 13003_1, 14500_1

Remarks:

Found during office processing.

Feature Correlation

Address	Feature	Range	Azimuth	Status
h11398/3002_mbes/2007-100/009_1539	540/34	0.00	000.0	Primary
h11398/3002_mbes/2007-100/010_1536	528/125	2.85	316.9	Secondary

Hydrographer Recommendations

Chart sounding with a depth of 30 feet in Latitude 40°38'38.128"N, Longitude 074°11'21.935"W.

Cartographically-Rounded Depth (Affected Charts):

30ft (12333_1, 12327_1)

5fm (12300_1, 13003_1, 14500_1)

9.1m (5161_1)

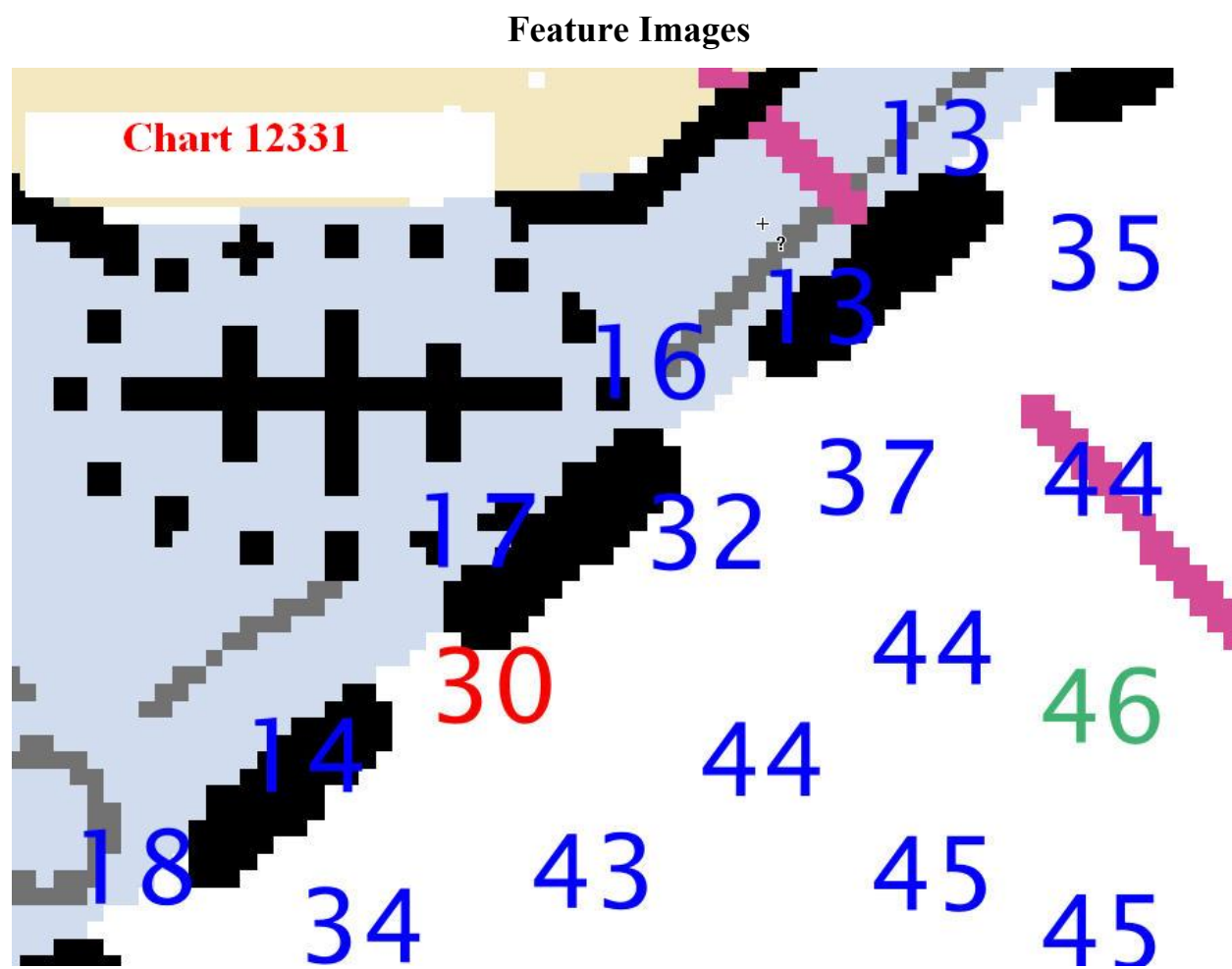
S-57 Data

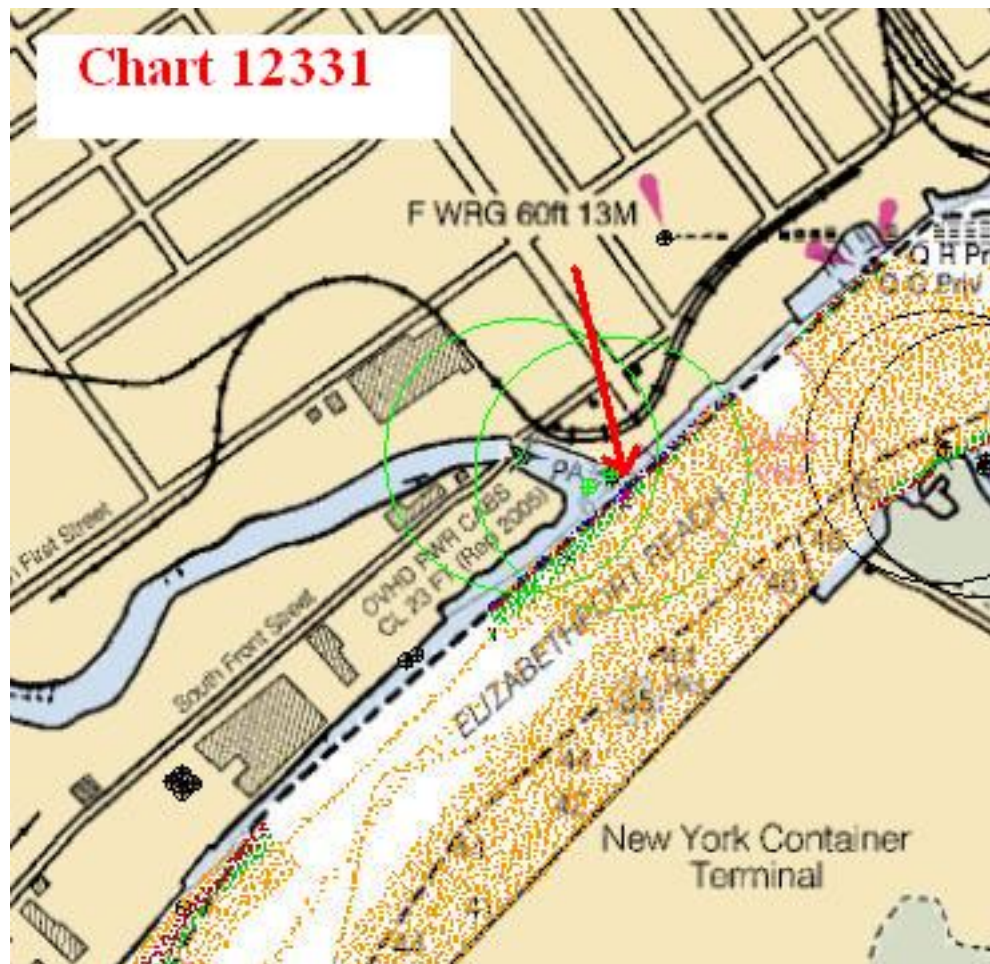
Geo object 1: Sounding (SOUNDG)
Attributes: QUASOU - 1:depth known
 SORDAT - 20070830
 SORIND - US,US,nsurf,H11398

TECSOU - 3:found by multi-beam

Office Notes

Concur - Add 30 ft depth.

*Figure 1.1.1*

*Figure 1.1.2*

H11398 AHB DToN Report #4

Registry Number: H11398
State: New Jersey
Locality: Arthur Kill
Sub-locality: Port Socony Reach to Elizabethport
Project Number: OPR-B310-NRT5-07
Survey Date: 04/10/2007

Charts Affected

Number	Edition	Date	Scale (RNC)	RNC Correction(s)*
12333	35th	08/01/2007	1:15,000 (12333_1)	NGA NTM: 05/24/2008 (05/31/2008)
12327	100th	07/01/2007	1:40,000 (12327_1)	[L]NTM: ?
12300	46th	07/01/2007	1:400,000 (12300_1)	[L]NTM: ?
5161	13th	10/01/2003	1:1,058,400 (5161_1)	[L]NTM: ?
13003	49th	04/01/2007	1:1,200,000 (13003_1)	[L]NTM: ?
14500	27th	10/01/2002	1:1,500,000 (14500_1)	[L]NTM: ?

* Correction(s) - source: last correction applied (last correction reviewed--"cleared date")

Features

No.	Name	Feature Type	Survey Depth	Survey Latitude	Survey Longitude	AWOIS Item
1.1	30 ft shoal	Shoal	9.31 m	40° 38' 25.6" N	074° 11' 39.4" W	---

1.1) 30-ft SOUND Elizabethport Reach

DANGER TO NAVIGATION

Survey Summary

Survey Position: 40° 38' 25.6" N, 074° 11' 39.4" W
Least Depth: 9.31 m (= 30.54 ft = 5.091 fm = 5 fm 0.54 ft)
TPU ($\pm 1.96\sigma$): THU (TPEh) [None] ; TVU (TPEv)[None]
Timestamp: 2007-100.15:41:04.000 (04/10/2007)
GP Dataset: H11398_DTON#4.xls
GP No.: 1
Charts Affected: 12333_1, 12327_1, 12300_1, 5161_1, 13003_1, 14500_1

Remarks:

Found during office processing.

Feature Correlation

Address	Feature	Range	Azimuth	Status
H11398_DTON#4.xls	1	0.00	000.0	Primary

Hydrographer Recommendations

Chart a depth of 30 feet in Latitude 40°38'25.559"N , Longiutde 074°11'39.390"W,

Cartographically-Rounded Depth (Affected Charts):

30ft (12333_1, 12327_1)

5fm (12300_1, 13003_1, 14500_1)

9.3m (5161_1)

S-57 Data

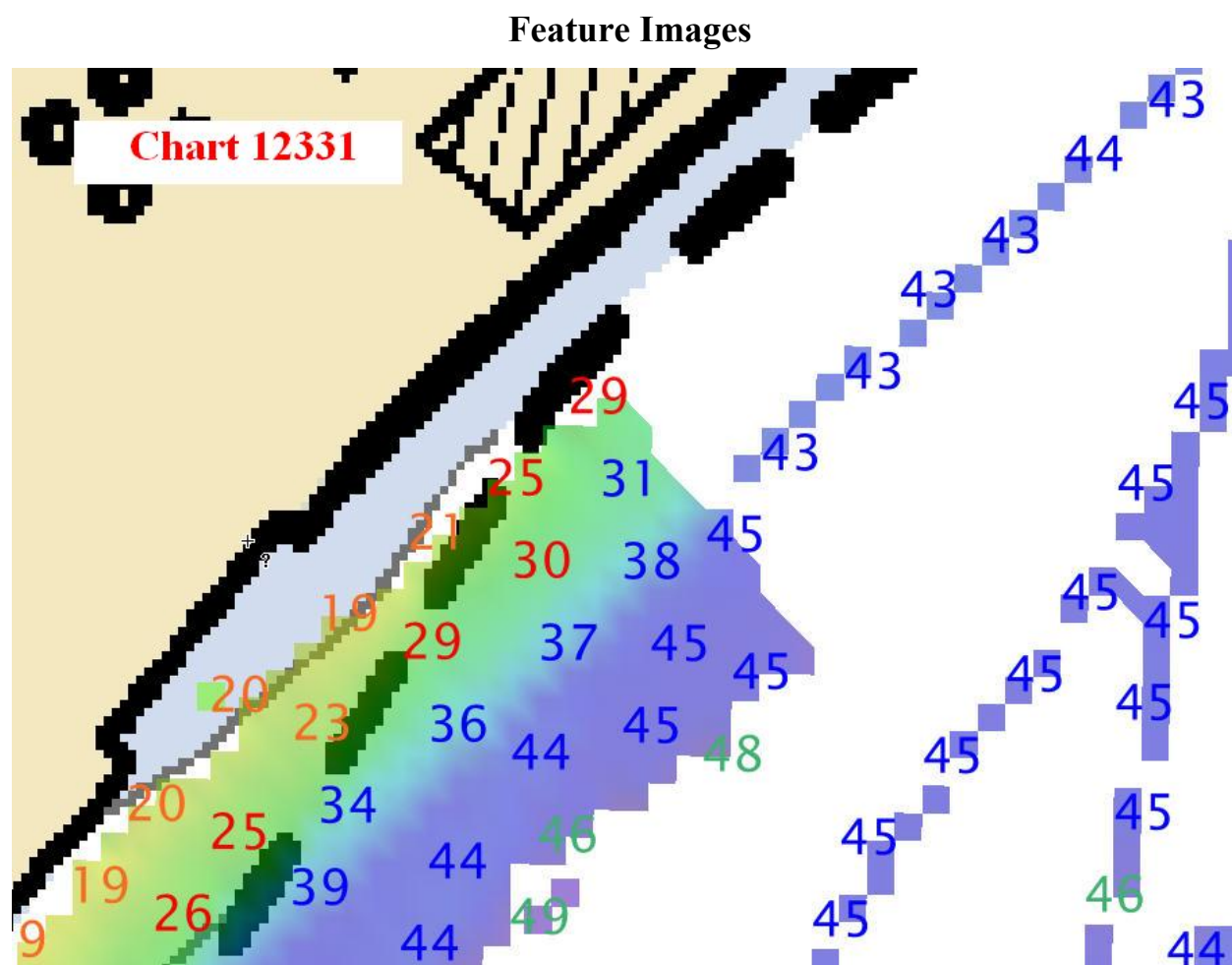
Geo object 1: Sounding (SOUNDG)
Attributes: OBJNAM - 30 ft sounding
 QUASOU - 1:depth known
 SORDAT - 20070830
 SORIND - US,US,nsurf,H11398

TECSOU - 3:found by multi-beam

VERDAT - 12:Mean lower low water

Office Notes

Concur - Chart 30 ft depth.

*Figure 1.1.1*

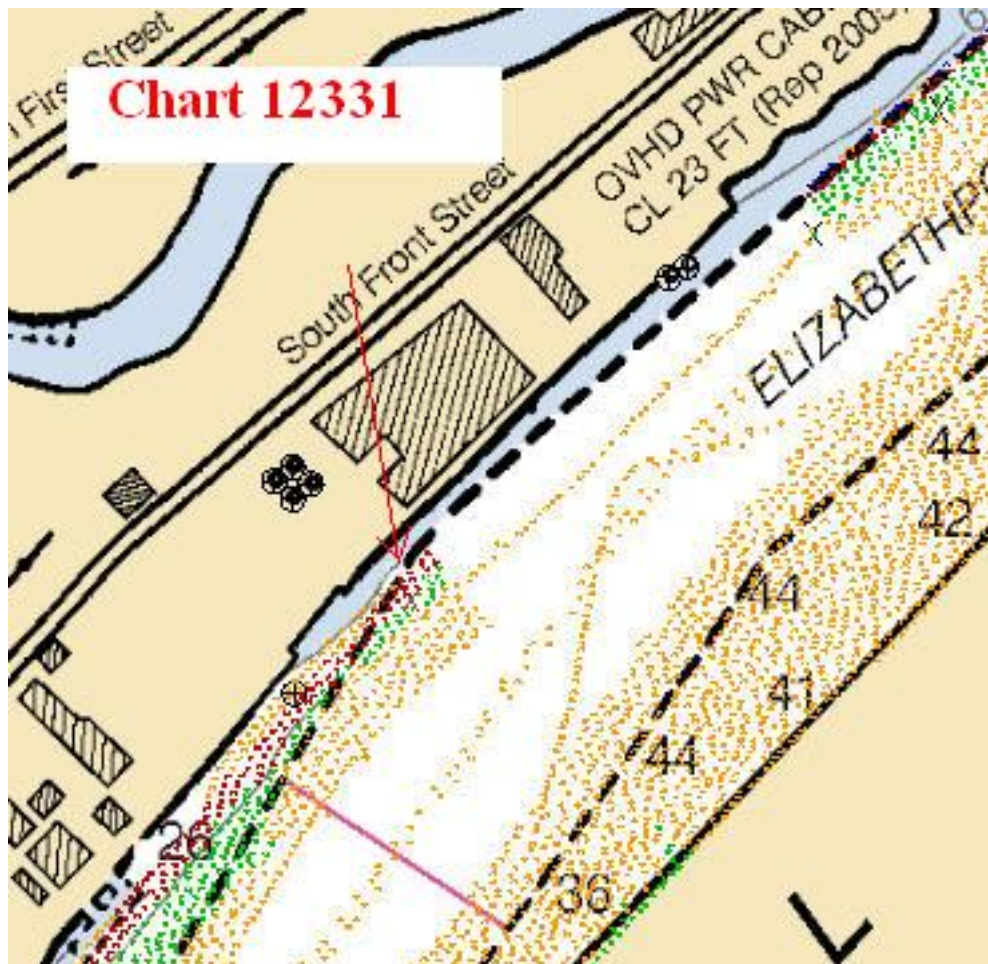


Figure 1.1.2

APPENDIX II

SURVEY FEATURES REPORT

H11398 - AWOIS Items

Registry Number: H11398
State: New Jersey
Locality: Arthur Kill
Sub-locality: Port Socony Reach to Elizabethport
Project Number: OPR-B310-NRT5-07
Survey Dates: 04/25/2007 - 08/23/2007

Charts Affected

Number	Edition	Date	Scale (RNC)	RNC Correction(s)*
12331	31st	07/01/2005	1:15,000 (12331_1)	USCG LNM: 03/04/2008 (04/15/2008) CHS NTM: None (01/25/2008) NGA NTM: 02/27/1999 (04/26/2008)
12333	35th	08/01/2007	1:15,000 (12333_1)	NGA NTM: 05/24/2008 (05/31/2008)
12327	100th	07/01/2007	1:40,000 (12327_1)	[L]NTM: ?
12300	46th	07/01/2007	1:400,000 (12300_1)	[L]NTM: ?
5161	13th	10/01/2003	1:1,058,400 (5161_1)	[L]NTM: ?
13003	49th	04/01/2007	1:1,200,000 (13003_1)	[L]NTM: ?
14500	27th	10/01/2002	1:1,500,000 (14500_1)	[L]NTM: ?

* Correction(s) - source: last correction applied (last correction reviewed--"cleared date")

Features

No.	Name	Feature Type	Survey Depth	Survey Latitude	Survey Longitude	AWOIS Item
1.1	OBSTRUCTION	AWOIS	[no data]	[no data]	[no data]	---
1.2	UNKNOWN	AWOIS	[no data]	[no data]	[no data]	---
1.3	UNKNOWN	AWOIS	[no data]	[no data]	[no data]	---
1.4	UNKNOWN	AWOIS	[no data]	[no data]	[no data]	---
1.5	UNKNOWN	AWOIS	[no data]	[no data]	[no data]	---
1.6	UNKNOWN	AWOIS	[no data]	[no data]	[no data]	---
1.7	UNKNOWN	AWOIS	[no data]	[no data]	[no data]	---
1.8	AWOIS 12543	SSS	[None]	40° 37' 15.8" N	074° 12' 16.9" W	12543
1.9	AWOIS 12552	SSS	[None]	40° 38' 38.5" N	074° 11' 23.7" W	12552

1.10	AWOIS 12541	Wreck	5.95 m	40° 33' 24.9" N	074° 13' 36.1" W	12541
1.11	AWOIS 12537	Shoal	2.59 m	40° 33' 34.2" N	074° 12' 50.1" W	12537

1.1) AWOIS #12553 - OBSTRUCTION

No Primary Survey Feature for this AWOIS Item

Search Position: 40° 38' 03.4" N, 074° 12' 15.2" W
Historical Depth: [None]
Search Radius: 150
Search Technique: MB,ES,S2,SD,DI
Technique Notes: [None]

History Notes:

SOURCE UNKNOWN-- ITEM APPEARS ON STANDARD IN NOV 1986. NO OTHER INFORMATION COULD BE FOUND. THE AMOUNT OF TIME SPENT TO FURTHER DETERMINE SOURCE WOULD NOT PROVE TO BE BENEFICIAL.

Survey Summary

Charts Affected: 12333_1, 12327_1, 12300_1, 5161_1, 13003_1, 14500_1

Remarks:

Item beyond NALL, not investigated.

Feature Correlation

Address	Feature	Range	Azimuth	Status
OPR-B310-NewYork-AWOIS	AWOIS # 12553	0.00	000.0	Primary

Hydrographer Recommendations

No recommendation.

S-57 Data

[None]

Office Notes

Retain as charted

1.2) AWOIS #12542 - UNKNOWN

No Primary Survey Feature for this AWOIS Item

Search Position: 40° 38' 39.6" N, 074° 11' 26.8" W
Historical Depth: [None]
Search Radius: 150
Search Technique: MB,ES,S2,SD,DI,VS
Technique Notes: [None]

History Notes:

LNM 45/94 11/9/94; A SUBMERGED WRECK HAS BEEN REPORTED 20 FT EAST OF THE SOUTH FRONT STREET BRIDGE IN ABOUT 6 FT OF WATER WITH ABOUT TWO FEET OF WATER OVER THE VESSEL. THE KEEL IS VISIBLE AT LOW TIDE. THE SUBMERGED VESSEL IS TIED TO THE CENTER SPAN OF THE BRIDGE WITH TWO LINES AND MARKED WITH TWO SMALL WHITE JUGS. MARINERS SHOULD EXERCISE CAUTION WHILE TRANSITING THIS AREA. LNM DOES NOT GIVE A GP LOCATION BUT CRIT 2000 HAS 40°38'39.5"- 74°11'27.0"W AS THE GP LOCATION OF THIS WRECK.

Survey Summary

Charts Affected: 12333_1, 12327_1, 12300_1, 5161_1, 13003_1, 14500_1

Remarks:

Item beyond NALL, not fully investigated. No object was noted in the SSS trace, and the object is not visible at low tide.

Feature Correlation

Address	Feature	Range	Azimuth	Status
OPR-B310-NewYork-AWOIS	AWOIS # 12542	0.00	000.0	Primary
ChartGPs - ENC US5NJ13M	Danger 11	3.31	334.0	Secondary (grouped)

Hydrographer Recommendations

No recommendations.

S-57 Data

[None]

Office Notes

Concur

Feature Images

1.3) AWOIS #12544 - UNKNOWN

No Primary Survey Feature for this AWOIS Item

Search Position: 40° 37' 24.1" N, 074° 12' 19.1" W
Historical Depth: [None]
Search Radius: 200
Search Technique: SD,DI,VS
Technique Notes: [None]

History Notes:

UNDETERMINED SOURCE-- ITEM APPEARS ON STANDARD IN 1929 AS A VISIBLE WRECK. ITEM IS CHANGED TO A SUNKEN WRECK BETWEEN 1941 AND 1947. THE AMOUNT OF TIME SPENT TO FURTHER DETERMINE SOURCE WOULD NOT PROVE TO BE BENEFICIAL.

Survey Summary

Charts Affected: 12333_1, 12327_1, 12300_1, 5161_1, 13003_1, 14500_1

Remarks:

Item beyond NALL, not investigated.

Feature Correlation

Address	Feature	Range	Azimuth	Status
OPR-B310-NewYork-AWOIS	AWOIS # 12544	0.00	000.0	Primary
ChartGPs - ENC US5NJ13M	Danger 8	4.30	342.5	Secondary (grouped)

Hydrographer Recommendations

Retain as charted

S-57 Data

[None]

Office Notes

Concur - Retain as charted.

1.4) AWOIS #12545 - UNKNOWN

No Primary Survey Feature for this AWOIS Item

Search Position: 40° 38' 39.9" N, 074° 11' 07.1" W
Historical Depth: [None]
Search Radius: 150
Search Technique: SD,DI,VS
Technique Notes: SEARCH NOT REQUIRED WITHIN FEDERAL CHANNEL LIMITS

History Notes:

SOURCE UNKNOWN-- ITEM APPEARS ON STANDARD IN 1938. NO OTHER INFORMATION COULD BE FOUND. THE AMOUNT OF TIME SPENT TO FURTHER DETERMINE SOURCE WOULD NOT PROVE TO BE BENEFICIAL.

Survey Summary

Charts Affected: 12333_1, 12327_1, 12300_1, 5161_1, 13003_1, 14500_1

Remarks:

Disproval; The area was covered with 200% Klein 3000 SSS no object was noted in the SSS trace. There is no evidence that object is still in existence.

Feature Correlation

Address	Feature	Range	Azimuth	Status
OPR-B310-NewYork-AWOIS	AWOIS # 12545	0.00	000.0	Primary
ChartGPs - ENC US5NJ13M	Danger 13	4.94	345.0	Secondary (grouped)

Hydrographer Recommendations

The hydrographer recommends the object be removed from the chart.

S-57 Data

[None]

Office Notes

Concur. Delete non dangerous sunken wreck.

1.5) AWOIS #12546 - UNKNOWN

No Primary Survey Feature for this AWOIS Item

Search Position: 40° 38' 39.4" N, 074° 11' 05.0" W
Historical Depth: [None]
Search Radius: 150
Search Technique: SD,DI,VS
Technique Notes: SEARCH NOT REQUIRED WITHIN FEDERAL CHANNEL LIMITS

History Notes:

SOURCE UNKNOWN-- ITEM APPEARS ON STANDARD IN 1966. NO OTHER INFORMATION COULD BE FOUND. THE AMOUNT OF TIME SPENT TO FURTHER DETERMINE SOURCE WOULD NOT PROVE TO BE BENEFICIAL.

Survey Summary

Charts Affected: 12333_1, 12327_1, 12300_1, 5161_1, 13003_1, 14500_1

Remarks:

AWIOS 12546 search radius investigated with 200% Klein 3000 SSS to the NALL. No item matching that of AWOIS 12546 was noted in the SSS trace.

Feature Correlation

Address	Feature	Range	Azimuth	Status
OPR-B310-NewYork-AWOIS	AWOIS # 12546	0.00	000.0	Primary
ChartGPs - ENC US5NJ13M	Danger 14	7.54	024.4	Secondary (grouped)

Hydrographer Recommendations

No charting recommendations.

S-57 Data

[None]

Office Notes

Retain dangerous sunken wreck.

1.6) AWOIS #12548 - UNKNOWN

No Primary Survey Feature for this AWOIS Item

Search Position: 40° 35' 43.8" N, 074° 11' 56.9" W
Historical Depth: [None]
Search Radius: 200
Search Technique: SD,DI,VS
Technique Notes: SEARCH NOT REQUIRED WITHIN FEDERAL CHANNEL LIMITS

History Notes:

SOURCE UNKNOWN-- ITEM APPEARS ON STANDARD IN 1950. NO OTHER INFORMATION COULD BE FOUND. THE AMOUNT OF TIME SPENT TO FURTHER DETERMINE SOURCE WOULD NOT PROVE TO BE BENEFICIAL.

Survey Summary

Charts Affected: 12333_1, 12327_1, 12300_1, 5161_1, 13003_1, 14500_1

Remarks:

AWIOS 12548 search radius investigated with 200% Klein 3000 SSS and 100% Simrad EM3000 MBES to the NALL. Piles or ruins visible at low tide, located outside NALL, no data acquired directly over this object.

Feature Correlation

Address	Feature	Range	Azimuth	Status
OPR-B310-NewYork-AWOIS	AWOIS # 12548	0.00	000.0	Primary
ChartGPs - ENC US5NJ13M	Danger 6	2.63	351.4	Secondary (grouped)

Hydrographer Recommendations

The hydrographer recommends the item be retained as charted.

S-57 Data

[None]

Office Notes

Concur - Retain visible wreck.

Feature Images

1.7) AWOIS #12549 - UNKNOWN

No Primary Survey Feature for this AWOIS Item

Search Position: 40° 35' 38.5" N, 074° 12' 00.0" W
Historical Depth: [None]
Search Radius: 200
Search Technique: SD,DI,VS
Technique Notes: SEARCH NOT REQUIRED WITHIN FEDERAL CHANNEL LIMITS

History Notes:

SOURCE UNKNOWN-- ITEM APPEARS ON STANDARD IN 1950. NO OTHER INFORMATION COULD BE FOUND. THE AMOUNT OF TIME SPENT TO FURTHER DETERMINE SOURCE WOULD NOT PROVE TO BE BENEFICIAL.

Survey Summary

Charts Affected: 12333_1, 12327_1, 12300_1, 5161_1, 13003_1, 14500_1

Remarks:

AWIOS 12549 search radius investigated with 200% Klein 3000 SSS and 100% Simrad EM3000 MBES to the NALL. Piles or ruins visible at low tide, located outside NALL, no data acquired directly over this object.

Feature Correlation

Address	Feature	Range	Azimuth	Status
OPR-B310-NewYork-AWOIS	AWOIS # 12549	0.00	000.0	Primary
ChartGPs - ENC US5NJ13M	Danger 5	5.41	135.6	Secondary (grouped)

Hydrographer Recommendations

The hydrographer recommends the item be retained as charted.

S-57 Data

[None]

Office Notes

Concur - Retain visible wreck.

Feature Images

1.8) AWOIS 12543

Primary Feature for AWOIS Item #12543

Search Position: 40° 37' 16.3" N, 074° 12' 17.8" W
Historical Depth: [None]
Search Radius: 200
Search Technique: SD,DI,VS
Technique Notes: SEARCH NOT REQUIRED WITHIN FEDERAL CHANNEL LIMITS

History Notes:

ITEM SOURCE NOT FOUND. FIRST APPEARS ON CHART IN 1947 AS A VISIBLE WRECK. CHANGED BY LETTER 1508/70 TO SUBMERGED WRECK. THE AMOUNT OF TIME SPENT TO FURTHER DETERMINE SOURCE WOULD NOT PROVE TO BE BENEFICIAL.

Survey Summary

Survey Position: 40° 37' 15.8" N, 074° 12' 16.9" W
Least Depth: [None]
TPU ($\pm 1.96\sigma$): THU (TPEh) [None] ; TVU (TPEv) [None]
Timestamp: 2007-116.05:57:35 (04/26/2007)
Survey Line: h11398 / 3002sss500k / 2007-099 / sonar_data070409140700
Contact/Point: 0003/1
Charts Affected: 12333_1, 12327_1, 12300_1, 5161_1, 13003_1, 14500_1

Remarks:

Possible portions of wreck, AWOIS #12543. Item outside NALL, not developed with MBES.

Feature Correlation

Address	Feature	Range	Azimuth	Status
h11398/3002sss500k/2007-099/sonar_data070409140700	0003	0.00	000.0	Primary
ChartGPs - ENC US5NJ13M	Danger 7	25.08	124.0	Secondary (grouped)
OPR-B310-NewYork-AWOIS	AWOIS # 12543	26.64	128.2	Secondary (grouped)

Hydrographer Recommendations

Hydrographer recommends the item be retained as charted.

S-57 Data

[None]

Office Notes

Concur with clarification - Wreck was located by side scan sonar. Revise loocation of charted dangerous sunken wreck to

Latitude 40° 37' 16.1" N, Longitude 074° 12' 17.0" W

1.9) AWOIS 12552

Primary Feature for AWOIS Item #12552

Search Position: 40° 38' 39.0" N, 074° 11' 22.6" W
Historical Depth: [None]
Search Radius: 150
Search Technique: MB,ES,S2,SD,DI
Technique Notes: SEARCH NOT REQUIRED WITHIN FEDERAL CHANNEL LIMITS

History Notes:

SOURCE UNKNOWN-- ITEM APPEARS ON STANDARD IN 1938. NO OTHER INFORMATION COULD BE FOUND. THE AMOUNT OF TIME SPENT TO FURTHER DETERMINE SOURCE WOULD NOT PROVE TO BE BENEFICIAL.

Survey Summary

Survey Position: 40° 38' 38.5" N, 074° 11' 23.7" W
Least Depth: [None]
TPU ($\pm 1.96\sigma$): THU (TPEh) [None] ; TVU (TPEv) [None]
Timestamp: 2007-235.02:08:57 (08/23/2007)
Survey Line: h11398 / 3002sss500k / 2007-099 / sonar_data070409140700
Contact/Point: 0008/1
Charts Affected: 12333_1, 12327_1, 12300_1, 5161_1, 13003_1, 14500_1

Remarks:

Possible AWOIS 12552. Item is beyond NALL and was not developed with MBES.

Feature Correlation

Address	Feature	Range	Azimuth	Status
h11398/3002sss500k/2007-099/sonar_data070409140700	0008	0.00	000.0	Primary
ChartGPs - ENC US5NJ13M	Danger 12	29.34	246.0	Secondary (grouped)
OPR-B310-NewYork-AWOIS	AWOIS # 12552	30.34	239.5	Secondary

Hydrographer Recommendations

Retain as charted.

S-57 Data

[None]

Office Notes

Concur. Retain dangerous sunken wreck.

Feature Images

[Image file t:/sar/h11398_b310-nrt5/ahb survey project_h11398/caris/hdcs_data/h11398/3002sss500k/2007-099/sonar_data070409140700/sonar_da0008_s.tif does not exist.]

1.10) AWOIS 12541

Primary Feature for AWOIS Item #12541

Search Position: 40° 33' 23.9" N, 074° 13' 35.2" W
Historical Depth: [None]
Search Radius: 200
Search Technique: MB,ES,S2,SD,DI
Technique Notes: SEACH NOT REQUIRED WITHIN FEDERAL CHANNEL LIMITS

History Notes:

UNDETERMINED SOURCE--SUBMERGED WRECK FIRST APPEARS ON MARCH 1939 EDITION OF CHART 12331. THERE IS NO ENTRY PERTAINING TO THIS WRECK IN EITHER THE CHART HISTORY OR THE CRIT LISTING. EXAMINATION OF SOURCES NOTED ON THE PRECEEDING STANDARD PROVIDED NO INFORMATION AS TO THE SOURCE OF THIS WRECK.

Survey Summary

Survey Position: 40° 33' 24.9" N, 074° 13' 36.1" W
Least Depth: 5.95 m (= 19.51 ft = 3.252 fm = 3 fm 1.51 ft)
TPU ($\pm 1.96\sigma$): **THU (TPEh)** ± 1.970 m ; **TVU (TPEv)** ± 0.297 m
Timestamp: 2007-115.14:13:51.200 (04/25/2007)
Survey Line: h11398 / 3002_mbes / 2007-115 / 091_1410
Profile/Beam: 1871/2
Charts Affected: 12331_1, 12327_1, 12300_1, 5161_1, 13003_1, 14500_1

Remarks:

The area was covered with 200% Klein 3000 SSS and 100% Simrad EM3000 MBES. Object is an exposed wreck located within the search radius of AWOIS 12541.

Feature Correlation

Address	Feature	Range	Azimuth	Status
h11398/3002_mbes/2007-115/091_1410	1871/2	0.00	000.0	Primary
ChartGPs - ENC US5NJ11M	Danger 5	36.91	320.5	Secondary (grouped)
OPR-B310-NewYork-AWOIS	AWOIS # 12541	38.88	326.5	Secondary
h11398/3002_mbes/2007-115/091_1410	1765/2	41.32	285.5	Secondary (grouped)
h11398/3002sss500k/2007-113/sonar_data070423174000	0002	42.95	278.2	Secondary

Hydrographer Recommendations

The hydrographer recommends reposition wreck symbol to encompass most offshore point of wrecked barge.
Change wreck symbol to exposed wreck

S-57 Data

Geo object 1: Wreck (WRECKS)
Attributes: CATWRK - 2:dangerous wreck
CONVIS - 1:visual conspicuous
SORDAT - 20070425
TECSOU - 2:found by side scan sonar
VALSOU - 5.948 m
VERDAT - 12:Mean lower low water
WATLEV - 1:partly submerged at high water

Office Notes

Concur with clarification. Delete dangerous sunken wreck.
Chart visible wreck in Latitude 40° 33' 24.9" N, Longitude 074° 13' 36.1" W.

Feature Images

[Image file t:/sar/h11398_b310-nrt5/ahb survey
project_h11398/ahb_h11398/pss/images/2007-115_1871-2_chart.jpg does not exist.]

1.11) AWOIS 12537

Primary Feature for AWOIS Item #12537

Search Position: 40° 33' 34.6" N, 074° 12' 49.7" W
Historical Depth: [None]
Search Radius: 150
Search Technique: MB,ES,S2,SD,DI
Technique Notes: [None]

History Notes:

LNM45/77--1ST CGD, ADD VISIBLE WRECK IN 40 33 34.2, 74 12 51.2 (NOS BP-101573).

Survey Summary

Survey Position: 40° 33' 34.2" N, 074° 12' 50.1" W
Least Depth: 2.59 m (= 8.49 ft = 1.416 fm = 1 fm 2.49 ft)
TPU ($\pm 1.96\sigma$): **THU (TPEh)** ± 1.963 m ; **TVU (TPEv)** ± 0.239 m
Timestamp: 2007-136.16:09:49.797 (05/16/2007)
Survey Line: h11398 / 3002_mbes / 2007-136 / 022_1608
Profile/Beam: 518/124
Charts Affected: 12331_1, 12327_1, 12300_1, 5161_1, 13003_1, 14500_1

Remarks:

The navigable area was covered with 200% Klein 3000 SSS and 100% Simrad EM3000 MBES. The object is a wreck located within the search radius of AWOIS 12537.

Feature Correlation

Address	Feature	Range	Azimuth	Status
h11398/3002_mbes/2007-136/022_1608	518/124	0.00	000.0	Primary
h11398/3002sss500k/2007-114/sonar_data070424173300	0004	14.85	237.6	Secondary
OPR-B310-NewYork-AWOIS	AWOIS # 12537	16.06	217.8	Secondary
ChartGPs - ENC US5NJ11M	Danger 10	23.33	198.6	Secondary (grouped)

Hydrographer Recommendations

Retain as charted.

Cartographically-Rounded Depth (Affected Charts):

8ft (12331_1, 12327_1)

1 ¼fm (12300_1, 13003_1, 14500_1)

2.6m (5161_1)

S-57 Data

[None]

Office Notes

Do not concur - Chart a wreck with a depth of 8 feet in Latitude 40° 33' 34.9" N, Longitude 074° 12' 49.8" W.

Delete charted visible wreck. Add 8 Wk and danger curve.

H11398 - Charted Items

Registry Number: H11398
State: New Jersey
Locality: Arthur Kill
Sub-locality: Port Socony Reach to Elizabethport
Project Number: OPR-B310-NRT5-07
Survey Dates: 04/19/2007 - 01/08/2008

Charts Affected

Number	Edition	Date	Scale (RNC)	RNC Correction(s)*
12331	31st	07/01/2005	1:15,000 (12331_1)	USCG LNM: 03/04/2008 (04/15/2008) CHS NTM: None (01/25/2008) NGA NTM: 02/27/1999 (04/26/2008)
12333	35th	08/01/2007	1:15,000 (12333_1)	NGA NTM: 05/24/2008 (05/31/2008)
12327	100th	07/01/2007	1:40,000 (12327_1)	[L]NTM: ?
12300	46th	07/01/2007	1:400,000 (12300_1)	[L]NTM: ?
5161	13th	10/01/2003	1:1,058,400 (5161_1)	[L]NTM: ?
13003	49th	04/01/2007	1:1,200,000 (13003_1)	[L]NTM: ?
14500	27th	10/01/2002	1:1,500,000 (14500_1)	[L]NTM: ?

* Correction(s) - source: last correction applied (last correction reviewed--"cleared date")

Features

No.	Name	Feature Type	Survey Depth	Survey Latitude	Survey Longitude	AWOIS Item
1.1	296/83 Debris/Ruins	Obstruction	5.77 m	40° 36' 47.8" N	074° 12' 17.6" W	---
1.2	261/44 OBSTN	Obstruction	7.05 m	40° 36' 12.1" N	074° 12' 02.5" W	---
1.3	2930/4 Wreck	Shoal	4.27 m	40° 33' 25.8" N	074° 13' 09.6" W	---
1.4	448/11 OBSTN	Obstruction	5.06 m	40° 38' 02.5" N	074° 12' 02.0" W	---
1.5	1467/126 Riprap	Rock	3.21 m	40° 32' 46.3" N	074° 15' 03.4" W	---
1.6	Ruined Pier S of Goethals Bridge	Shoal	[None]	40° 38' 06.6" N	074° 11' 55.8" W	---
1.7	Ruined RR bridge	Shoal	[None]	40° 35' 42.1" N	074° 12' 25.4" W	---
1.8	New pier structure and boat ramp	Shoal	[None]	40° 34' 18.2" N	074° 12' 44.6" W	---
1.9	Ruined Pier	Obstruction	[None]	40° 33' 48.5" N	074° 12' 54.9" W	---

1.10	Railcar Pier ruins	Obstruction	[None]	40° 33' 40.1" N	074° 13' 47.6" W	---
------	--------------------	-------------	--------	-----------------	------------------	-----

1.1) 296/83 Debris/Ruins

Survey Summary

Survey Position: 40° 36' 47.8" N, 074° 12' 17.6" W
Least Depth: 5.77 m (= 18.94 ft = 3.157 fm = 3 fm 0.94 ft)
TPU ($\pm 1.96\sigma$): **THU (TPEh)** ± 1.962 m ; **TVU (TPEv)** ± 0.242 m
Timestamp: 2007-219.14:11:16.625 (08/07/2007)
Survey Line: h11398 / 3002_mbes / 2007-219 / 070_1411
Profile/Beam: 296/83
Charts Affected: 12333_1, 12327_1, 12300_1, 5161_1, 13003_1, 14500_1

Remarks:

The area was covered with 100% Klein 3000 SSS and 100% Simrad EM3000 MBES. The object appears to be rocks or man made material from nearby ruinous pier. The object is located outside the channel.

Feature Correlation

Address	Feature	Range	Azimuth	Status
h11398/3002_mbes/2007-219/070_1411	296/83	0.00	000.0	Primary
h11398/3002sss500k/2007-099/sonar_data070409140700	0001	10.34	342.1	Secondary
ChartGPs - Digitized	1	23.73	011.4	Secondary (grouped)
h11398/3002sss500k/2007-099/sonar_data070409140700	0002	35.08	011.6	Secondary

Hydrographer Recommendations

The hydrographer recommends the object be charted as an OBSTN, LD and position as surveyed.

Cartographically-Rounded Depth (Affected Charts):

19ft (12333_1, 12327_1)
 3fm (12300_1, 13003_1, 14500_1)
 5.8m (5161_1)

S-57 Data

Geo object 1: Obstruction (OBSTRN)
Attributes: CONDTN - 2:ruined
 QUASOU - 6:least depth known

SORDAT - 20070807

TECSOU - 2:found by side scan sonar

VALSOU - 5.773 m

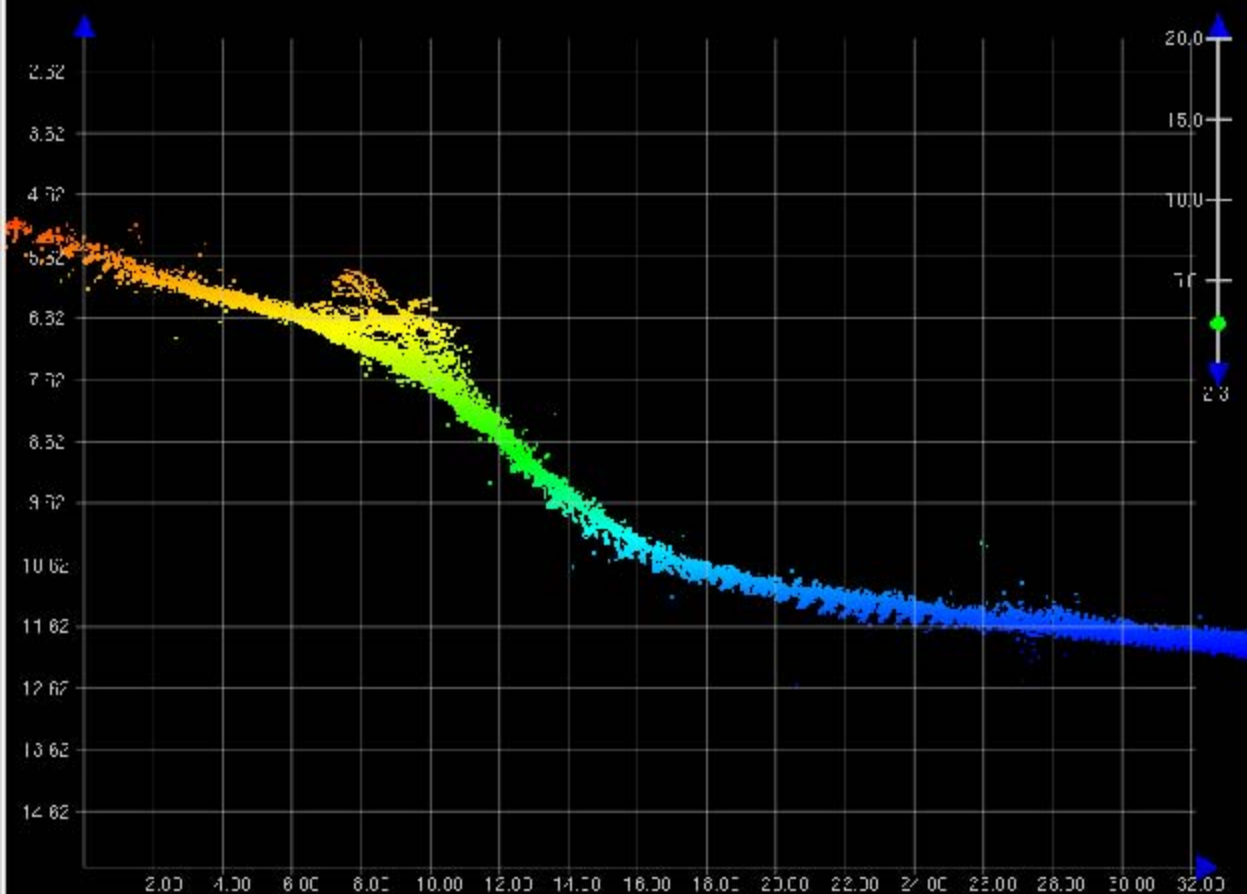
VERDAT - 12:Mean lower low water

WATLEV - 3:always under water/submerged

Office Notes

Concur - Delete Obstn - Chart Obstns with a depth of 19 feet in Latitude 40° 36' 47.8" N, Longitude 074° 12' 17.6" W.
Chart 19 Obstn.

Feature Images



1.2) 261/44 OBSTN

Survey Summary

Survey Position: 40° 36' 12.1" N, 074° 12' 02.5" W
Least Depth: 7.05 m (= 23.12 ft = 3.853 fm = 3 fm 5.12 ft)
TPU ($\pm 1.96\sigma$): **THU (TPEh)** ± 1.965 m ; **TVU (TPEv)** ± 0.245 m
Timestamp: 2007-109.14:50:53.947 (04/19/2007)
Survey Line: h11398 / 3002_mbes / 2007-109 / 056_1450
Profile/Beam: 261/44
Charts Affected: 12333_1, 12327_1, 12300_1, 5161_1, 13003_1, 14500_1

Remarks:

The area was covered with 200% Klein 3000 SSS and 100% Simrad EM3000 MBES. The object is two OBSTNs near a charted OBSTN.

Feature Correlation

Address	Feature	Range	Azimuth	Status
h11398/3002_mbes/2007-109/056_1450	261/44	0.00	000.0	Primary
h11398/3002sss500k/2007-099/sonar_data070409153100	0004	13.65	328.3	Secondary (grouped)
ChartGPs - ENC US5NJ13M	Danger 2	26.20	330.2	Secondary (grouped)
h11398/3002_mbes/2007-109/056_1450	359/107	37.48	342.6	Secondary (grouped)
h11398/3002sss500k/2007-099/sonar_data070409153100	0005	48.64	336.8	Secondary (grouped)

Hydrographer Recommendations

The hydrographer recommends LD be added to OBSTN circle.

Cartographically-Rounded Depth (Affected Charts):

23ft (12333_1, 12327_1)

3 $\frac{3}{4}$ fm (12300_1, 13003_1, 14500_1)

7.0m (5161_1)

S-57 Data

Geo object 1: Obstruction (OBSTRN)

Attributes: QUASOU - 6:least depth known

SORDAT - 20070419

TECSOU - 1:found by echo-sounder

VALSOU - 7.047 m

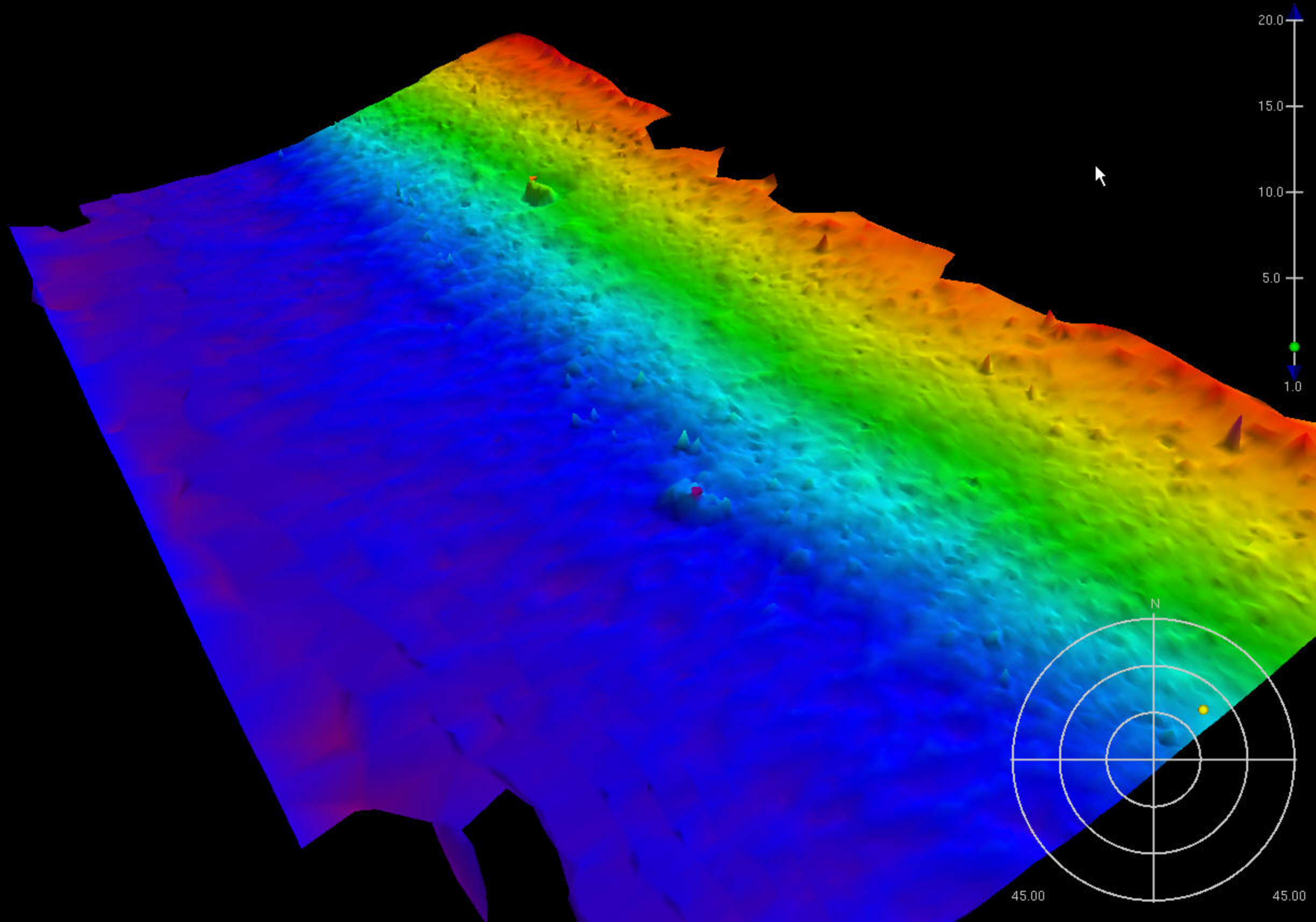
VERDAT - 12:Mean lower low water

WATLEV - 3:always under water/submerged

Office Notes

Do not concur - Disproval of charted Obstn was made during field operations through 200% side scan and mutibeam data collection. Items located by field unit were determined insignifcant during office processing. Do not chart. Delete charted Obstruction with no depth.

Feature Images



1.3) 2930/4 Wreck

Survey Summary

Survey Position: 40° 33' 25.8" N, 074° 13' 09.6" W
Least Depth: 4.27 m (= 14.01 ft = 2.335 fm = 2 fm 2.01 ft)
TPU ($\pm 1.96\sigma$): **THU (TPEh)** ± 1.964 m ; **TVU (TPEv)** ± 0.260 m
Timestamp: 2007-136.16:00:30.771 (05/16/2007)
Survey Line: h11398 / 3002_mbes / 2007-136 / 017_1553
Profile/Beam: 2930/4
Charts Affected: 12331_1, 12327_1, 12300_1, 5161_1, 13003_1, 14500_1

Remarks:

The area was covered with 100% Klein 3000 SSS and 100% Simrad EM3000 MBES. The object is a wreck located on the edge of the channel, partially within a charted foul area.

Feature Correlation

Address	Feature	Range	Azimuth	Status
h11398/3002_mbes/2007-136/017_1553	2930/4	0.00	000.0	Primary
ChartGPs - Digitized	2	23.10	015.2	Secondary (grouped)
h11398/3002sss500k/2007-113/sonar_data070423174000	0003	25.45	287.3	Secondary
h11398/3002sss500k/2007-114/sonar_data070424173300	0001	32.07	300.0	Secondary
h11398/3002_mbes/2007-115/091_1410	301/10	37.53	299.8	Secondary (grouped)

Hydrographer Recommendations

The hydrographer recommends the object be charted as a dangerous wreck, LD and position as surveyed.

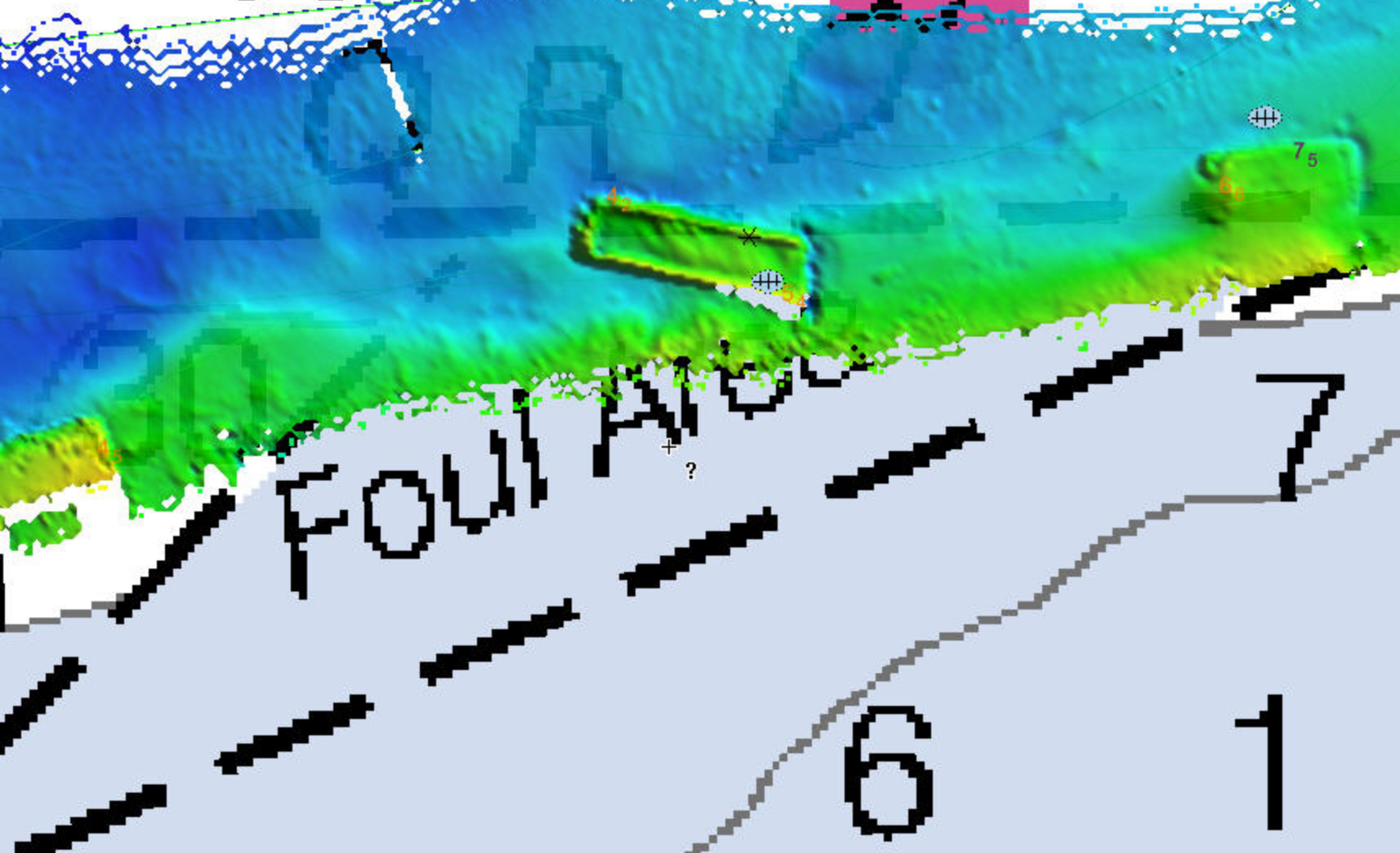
S-57 Data

[None]

Office Notes

Concur. Chart a wreck with a depth of 14 feet in Latitude 40° 33' 25.8" N, Longitude 074° 13' 09.6" W.
Chart 14 Wk and danger curve.

A "18"



1.4) 448/11 OBSTN

Survey Summary

Survey Position: 40° 38' 02.5" N, 074° 12' 02.0" W
Least Depth: 5.06 m (= 16.61 ft = 2.768 fm = 2 fm 4.61 ft)
TPU ($\pm 1.96\sigma$): **THU (TPEh)** ± 1.963 m ; **TVU (TPEv)** ± 0.246 m
Timestamp: 2007-219.13:48:07.429 (08/07/2007)
Survey Line: h11398 / 3002_mbes / 2007-219 / 074_1347
Profile/Beam: 448/11
Charts Affected: 12333_1, 12327_1, 12300_1, 5161_1, 13003_1, 14500_1

Remarks:

The area was covered with 100% Klein 3000 SSS and 100% Simrad EM3000 MBES. The object appears to be a rock located on the bank outside of the channel (Gulfport Reach).

Feature Correlation

Address	Feature	Range	Azimuth	Status
h11398/3002_mbes/2007-219/074_1347	448/11	0.00	000.0	Primary
h11398/3002_mbes/2007-109/033_1319	177/25	1.20	146.4	Secondary
ChartGPs - Digitized	3	1.57	093.5	Secondary (grouped)
h11398/3002sss500k/2007-099/sonar_data070409140700	0006	13.61	047.1	Secondary

Hydrographer Recommendations

The hydrographer recommends the object be charted as an OBSTN, LD and position as surveyed.

S-57 Data

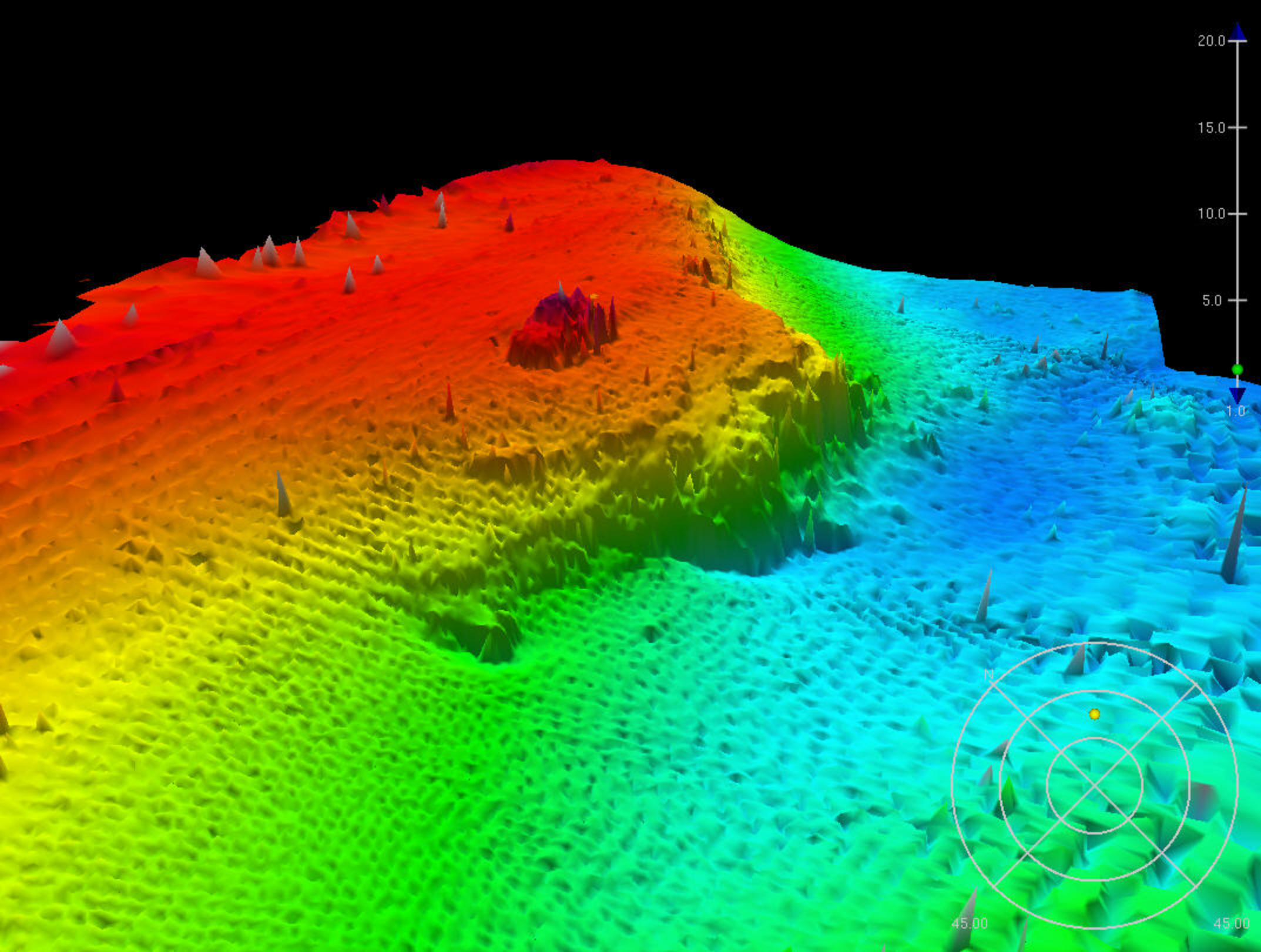
Geo object 1: Obstruction (OBSTRN)
Attributes: QUASOU - 6:least depth known
 SORDAT - 20070807
 TECSOU - 2:found by side scan sonar
 VALSOU - 5.062 m
 VERDAT - 12:Mean lower low water
 WATLEV - 3:always under water/submerged

Office Notes

Concur - Chart an obstruction with a depth of 16 feet in Latitude 40° 38' 02.5" N, Longitude 074° 12' 02.0" W

Chart 16 Obstrn and danger curve.

Feature Images



1.5) 1467/126 Riprap

Survey Summary

Survey Position: 40° 32' 46.3" N, 074° 15' 03.4" W
Least Depth: 3.21 m (= 10.54 ft = 1.757 fm = 1 fm 4.54 ft)
TPU ($\pm 1.96\sigma$): **THU (TPEh)** ± 1.961 m ; **TVU (TPEv)** ± 0.245 m
Timestamp: 2007-115.14:32:22.767 (04/25/2007)
Survey Line: h11398 / 3002_mbes / 2007-115 / 074_1429
Profile/Beam: 1467/126
Charts Affected: 12331_1, 12327_1, 12300_1, 5161_1, 13003_1, 14500_1

Remarks:

The area was covered with 200% Klein 3000 SSS and 100% Simrad EM3000 MBES. The Object is a pile of rocks or riprap exposed at low tide.

Feature Correlation

Address	Feature	Range	Azimuth	Status
h11398/3002_mbes/2007-115/074_1429	1467/126	0.00	000.0	Primary
h11398/3002sss500k/2007-113/sonar_data070423174000	0001	5.36	211.6	Secondary

Hydrographer Recommendations

The hydrographer recommends the object be retained as charted.

Cartographically-Rounded Depth (Affected Charts):

10ft (12331_1, 12327_1)

1 $\frac{3}{4}$ fm (12300_1, 13003_1, 14500_1)

3.2m (5161_1)

S-57 Data

Geo object 1: Underwater rock / awash rock (UWTROC)
Attributes: SORDAT - 20070425
 STATUS - 1:permanent
 TECSOU - 2:found by side scan sonar
 VALSOU - 3.214 m

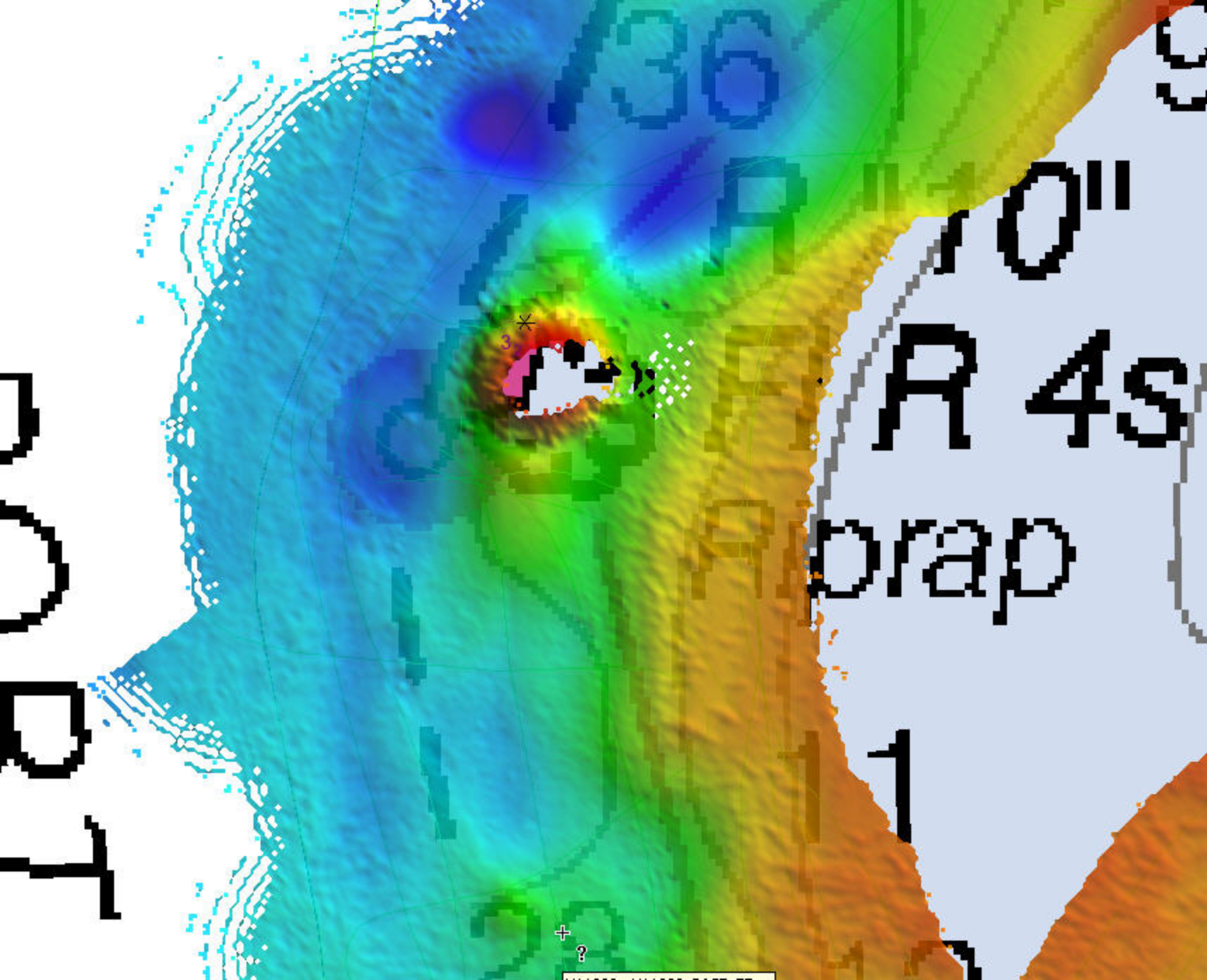
VERDAT - 12:Mean lower low water

WATLEV - 4:covers and uncovers

Office Notes

Concur. Retain as charted.

Feature Images



1.6) Ruined Pier S of Goethals Bridge

Survey Summary

Survey Position: 40° 38' 06.6" N, 074° 11' 55.8" W
Least Depth: [None]
TPU ($\pm 1.96\sigma$): **THU (TPEh)** [None] ; **TVU (TPEv)** [None]
Timestamp: 2008-008.13:44:38.000 (01/08/2008)
DP Dataset: h11398 / 3002_vbes / 2008-008 / h11398_shorelinetgt
Profile/Beam: 1/1
Charts Affected: 12333_1, 12327_1, 12300_1, 5161_1, 13003_1, 14500_1

Remarks:

The object is the ruins of a wooden pier.

Feature Correlation

Address	Feature	Range	Azimuth	Status
h11398/3002_vbes/2008-008/h11398_shorelinetgt	1/1	0.00	000.0	Primary
h11398/3002sss500k/2007-099/sonar_data070409140700	0009	16.61	046.6	Secondary

Hydrographer Recommendations

The hydrographer recommends the object be charted as ruins.

S-57 Data

[None]

Office Notes

Chart scale does not allow for the ruins. No change in charting recommended.

Feature Images



1.7) Ruined RR bridge

Survey Summary

Survey Position: 40° 35' 42.1" N, 074° 12' 25.4" W
Least Depth: [None]
TPU ($\pm 1.96\sigma$): **THU (TPEh)** [None] ; **TVU (TPEv)** [None]
Timestamp: 2008-008.13:59:43.000 (01/08/2008)
DP Dataset: h11398 / 3002_vbes / 2008-008 / h11398_shorelinetgt
Profile/Beam: 8/1
Charts Affected: 12333_1, 12327_1, 12300_1, 5161_1, 13003_1, 14500_1

Remarks:

The object is the ruins of a railroad bridge.

Feature Correlation

Address	Feature	Range	Azimuth	Status
h11398/3002_vbes/2008-008/h11398_shorelinetgt	8/1	0.00	000.0	Primary

Hydrographer Recommendations

The hydrographer recommends the object be charted as "piles."

S-57 Data

Geo object 1: Pile (PILPNT)
Attributes: SORDAT - 20080108

Office Notes

Do not concur - Item falls within the limits of charted ruins. Do not chart.



1.8) New pier structure and boat ramp

Survey Summary

Survey Position: 40° 34' 18.2" N, 074° 12' 44.6" W
Least Depth: [None]
TPU ($\pm 1.96\sigma$): **THU (TPEh)** [None] ; **TVU (TPEv)** [None]
Timestamp: 2008-008.14:07:32.000 (01/08/2008)
DP Dataset: h11398 / 3002_vbes / 2008-008 / h11398_shorelinetgt
Profile/Beam: 14/1
Charts Affected: 12331_1, 12327_1, 12300_1, 5161_1, 13003_1, 14500_1

Remarks:

The object is a reconstructed pier located on charted ruins.

Feature Correlation

Address	Feature	Range	Azimuth	Status
h11398/3002_vbes/2008-008/h11398_shorelinetgt	14/1	0.00	000.0	Primary
h11398/3002_vbes/2008-008/h11398_shorelinetgt	15/1	100.99	015.0	Secondary (grouped)

Hydrographer Recommendations

The hydrographer recommends the area be charted as a land area, and text "boat ramp" be added. Remove charted text "ruins" from the adjacent shoreline.

S-57 Data

Geo object 1: Land area (LNDARE)
Attributes: SORDAT - 20080108
 STATUS - 1:permanent

Office Notes

Concur with clarification - New feature. See photos. Defer to MCD for charting recommendation.





1.9) Ruined Pier

Survey Summary

Survey Position: 40° 33' 48.5" N, 074° 12' 54.9" W
Least Depth: [None]
TPU ($\pm 1.96\sigma$): **THU (TPEh)** [None] ; **TVU (TPEv)** [None]
Timestamp: 2008-008.14:09:31.000 (01/08/2008)
DP Dataset: h11398 / 3002_vbes / 2008-008 / h11398_shorelinetgt
Profile/Beam: 16/1
Charts Affected: 12331_1, 12327_1, 12300_1, 5161_1, 13003_1, 14500_1

Remarks:

The object is the ruins of a dilapidated wooden pier.

Feature Correlation

Address	Feature	Range	Azimuth	Status
h11398/3002_vbes/2008-008/h11398_shorelinetgt	16/1	0.00	000.0	Primary
h11398/3002sss500k/2007-113/sonar_data070423153000	0012	17.11	345.2	Secondary

Hydrographer Recommendations

The hydrographer recommends the object be charted as ruins.

S-57 Data

Geo object 1: Obstruction (OBSTRN)
Attributes: CONDTN - 2:ruined
 NATCON - 6:wooden
 SORDAT - 20080108
 STATUS - 4:disused
 VERDAT - 12:Mean lower low water
 WATLEV - 2:always dry

Office Notes

Concur - Revise charted pier to pier in ruins.

Feature Images



1.10) Railcar Pier ruins

Survey Summary

Survey Position: 40° 33' 40.1" N, 074° 13' 47.6" W
Least Depth: [None]
TPU ($\pm 1.96\sigma$): **THU (TPEh)** [None] ; **TVU (TPEv)** [None]
Timestamp: 2008-008.14:12:17.000 (01/08/2008)
DP Dataset: h11398 / 3002_vbes / 2008-008 / h11398_shorelinetgt
Profile/Beam: 17/1
Charts Affected: 12331_1, 12327_1, 12300_1, 5161_1, 13003_1, 14500_1

Remarks:

The object is the ruins of a railcar pier that is no longer in use.

Feature Correlation

Address	Feature	Range	Azimuth	Status
h11398/3002_vbes/2008-008/h11398_shorelinetgt	17/1	0.00	000.0	Primary

Hydrographer Recommendations

The hydrographer recommends the object be charted as ruins.

S-57 Data

Geo object 1: Obstruction (OBSTRN)
Attributes: CONDTN - 2:ruined
 SORDAT - 20080108
 STATUS - 4:disused
 VERDAT - 12:Mean lower low water
 WATLEV - 2:always dry

Office Notes

Concur - Revise pier to peir in ruins.



H11398 - Uncharted Items

Registry Number: H11398
State: New Jersey
Locality: Arthur Kill
Sub-locality: Port Socony Reach to Elizabethport
Project Number: OPR-B310-NRT5-07
Survey Dates: 04/19/2007 - 01/08/2008

Charts Affected

Number	Edition	Date	Scale (RNC)	RNC Correction(s)*
12331	31st	07/01/2005	1:15,000 (12331_1)	USCG LNM: 03/04/2008 (04/15/2008) CHS NTM: None (01/25/2008) NGA NTM: 02/27/1999 (04/26/2008)
12333	35th	08/01/2007	1:15,000 (12333_1)	NGA NTM: 05/24/2008 (05/31/2008)
12327	100th	07/01/2007	1:40,000 (12327_1)	[L]NTM: ?
12300	46th	07/01/2007	1:400,000 (12300_1)	[L]NTM: ?
5161	13th	10/01/2003	1:1,058,400 (5161_1)	[L]NTM: ?
13003	49th	04/01/2007	1:1,200,000 (13003_1)	[L]NTM: ?
14500	27th	10/01/2002	1:1,500,000 (14500_1)	[L]NTM: ?

* Correction(s) - source: last correction applied (last correction reviewed--"cleared date")

Features

No.	Name	Feature Type	Survey Depth	Survey Latitude	Survey Longitude	AWOIS Item
1.1	1587/124 OBSTNs	Shoal	5.88 m	40° 37' 41.2" N	074° 12' 13.8" W	---
1.2	162/29 OBSTN	Obstruction	5.95 m	40° 36' 23.4" N	074° 12' 09.9" W	---
1.3	1250/21 OBSTN	Shoal	7.23 m	40° 35' 34.3" N	074° 12' 09.7" W	---
1.4	62/88 Wreck	Wreck	6.67 m	40° 33' 25.9" N	074° 13' 04.7" W	---
1.5	8064/6 Wreck	Wreck	4.74 m	40° 33' 32.4" N	074° 12' 53.0" W	---
1.6	4286/75 Debris	Shoal	8.06 m	40° 35' 48.8" N	074° 12' 06.7" W	---
1.7	553/50 RKs or Debris	Shoal	7.91 m	40° 35' 26.6" N	074° 12' 25.4" W	---
1.8	1541/124 Debris	Shoal	7.24 m	40° 34' 17.2" N	074° 12' 44.0" W	---
1.9	5728/84 Rocks or Debris	Shoal	7.70 m	40° 34' 56.3" N	074° 12' 35.0" W	---

1.10	2038/99 Debris/Rks	Shoal	10.13 m	40° 32' 36.2" N	074° 15' 11.4" W	---
1.11	2032/123 OBSTN	Obstruction	8.50 m	40° 33' 51.1" N	074° 12' 45.9" W	---
1.12	441/112 OBSTN	Obstruction	10.33 m	40° 35' 20.0" N	074° 12' 28.2" W	---
1.13	2830/87 OBSTN	Obstruction	2.50 m	40° 32' 53.2" N	074° 14' 36.5" W	---
1.14	1464/80 OBSTN	Obstruction	3.12 m	40° 32' 55.0" N	074° 14' 36.7" W	---
1.15	Structure	Pile	[None]	40° 38' 02.1" N	074° 12' 05.9" W	---

1.1) 1587/124 OBSTNs

Survey Summary

Survey Position: 40° 37' 41.2" N, 074° 12' 13.8" W
Least Depth: 5.88 m (= 19.29 ft = 3.215 fm = 3 fm 1.29 ft)
TPU ($\pm 1.96\sigma$): **THU (TPEh)** ± 1.969 m ; **TVU (TPEv)** ± 0.272 m
Timestamp: 2007-109.13:31:27.644 (04/19/2007)
Survey Line: h11398 / 3002_mbes / 2007-109 / 031_1327
Profile/Beam: 1587/124
Charts Affected: 12333_1, 12327_1, 12300_1, 5161_1, 13003_1, 14500_1

Remarks:

The area was covered with 100% Klein 3000 SSS and 100% Simrad EM3000 MBES. The feature is a line of OBSTNs outside the channel (Gulfport Reach).

Feature Correlation

Address	Feature	Range	Azimuth	Status
h11398/3002_mbes/2007-109/031_1327	1587/124	0.00	000.0	Primary
h11398/3002sss500k/2007-099/sonar_data070409140700	0004	13.57	090.5	Secondary
h11398/3002_mbes/2007-109/031_1327	1550/80	25.83	170.0	Secondary (grouped)
h11398/3002_mbes/2007-109/031_1327	1520/45	44.47	164.1	Secondary (grouped)
h11398/3002sss500k/2007-099/sonar_data070409140700	0007	56.77	162.3	Secondary (grouped)

Hydrographer Recommendations

The hydrographer recommends the area be charted as rocky.

Cartographically-Rounded Depth (Affected Charts):

19ft (12333_1, 12327_1)

3 ¼fm (12300_1, 13003_1, 14500_1)

5.9m (5161_1)

S-57 Data

Geo object 1: Seabed area (SBDARE)

Attributes: NATQUA - 10:hard

NATSUR - 9:rock

Office Notes

Concur with clarification - No obstruction or rocks determined during office processing. Chart present survey depths.

Feature Images

1.2) 162/29 OBSTN

Survey Summary

Survey Position: 40° 36' 23.4" N, 074° 12' 09.9" W
Least Depth: 5.95 m (= 19.52 ft = 3.253 fm = 3 fm 1.52 ft)
TPU ($\pm 1.96\sigma$): **THU (TPEh)** ± 1.963 m ; **TVU (TPEv)** ± 0.245 m
Timestamp: 2007-109.14:48:26.909 (04/19/2007)
Survey Line: h11398 / 3002_mbes / 2007-109 / 055_1448
Profile/Beam: 162/29
Charts Affected: 12333_1, 12327_1, 12300_1, 5161_1, 13003_1, 14500_1

Remarks:

The area was covered with 100% Klein 3000 SSS and 100% Simrad EM3000 MBES. The Object is an OBSTN located on the edge of the channel (Tremley Point Reach).

Feature Correlation

Address	Feature	Range	Azimuth	Status
h11398/3002_mbes/2007-109/055_1448	162/29	0.00	000.0	Primary
h11398/3002sss500k/2007-099/sonar_data070409153100	0003	11.31	340.6	Secondary

Hydrographer Recommendations

The hydrographer recommends the object be charted as an OBSTN, LD and position as surveyed.

Cartographically-Rounded Depth (Affected Charts):

19ft (12333_1, 12327_1)

3 ¼fm (12300_1, 13003_1, 14500_1)

5.9m (5161_1)

S-57 Data

Geo object 1: Obstruction (OBSTRN)
Attributes: QUASOU - 6:least depth known
 SORDAT - 20070419
 TECSOU - 2:found by side scan sonar
 VALSOU - 5.949 m

VERDAT - 12:Mean lower low water

WATLEV - 3:always under water/submerged

Office Notes

Concur - Chart an obstructionn with a depth of 19 feet in Latitude 40° 36' 23.4" N, Longitude 074° 12' 09.9" W.
Chart 19 Obstn and danger curve.

Feature Images

1.3) 1250/21 OBSTN

Survey Summary

Survey Position: 40° 35' 34.3" N, 074° 12' 09.7" W
Least Depth: 7.23 m (= 23.72 ft = 3.954 fm = 3 fm 5.72 ft)
TPU ($\pm 1.96\sigma$): **THU (TPEh)** ± 1.968 m ; **TVU (TPEv)** ± 0.250 m
Timestamp: 2007-109.15:34:01.588 (04/19/2007)
Survey Line: h11398 / 3002_mbes / 2007-109 / 061_1531
Profile/Beam: 1250/21
Charts Affected: 12333_1, 12327_1, 12300_1, 5161_1, 13003_1, 14500_1

Remarks:

The area was covered with 100% Klein 3000 SSS and 100% Simrad EM3000 MBES. The feature is two rocks located outside the channel (Tremley Point Reach), LD deeper than charted depth in the area.

Feature Correlation

Address	Feature	Range	Azimuth	Status
h11398/3002_mbes/2007-109/061_1531	1250/21	0.00	000.0	Primary
h11398/3002_mbes/2007-109/061_1531	1263/56	8.60	071.8	Secondary (grouped)
h11398/3002sss500k/2007-099/sonar_data070409160100	0001	21.53	043.6	Secondary

Hydrographer Recommendations

The hydrographer recommends the object be charted as an OBSTN, LD and position as surveyed.

S-57 Data

[None]

Office Notes

Do not concur. Obstns are deeper than surrounding depths and are not within the channel limits. Do not chart.

1.4) 62/88 Wreck

Survey Summary

Survey Position: 40° 33' 25.9" N, 074° 13' 04.7" W
Least Depth: 6.67 m (= 21.87 ft = 3.646 fm = 3 fm 3.87 ft)
TPU ($\pm 1.96\sigma$): **THU (TPEh)** ± 1.964 m ; **TVU (TPEv)** ± 0.243 m
Timestamp: 2007-115.14:10:24.850 (04/25/2007)
Survey Line: h11398 / 3002_mbes / 2007-115 / 091_1410
Profile/Beam: 62/88
Charts Affected: 12331_1, 12327_1, 12300_1, 5161_1, 13003_1, 14500_1

Remarks:

The area was covered with 100% Klein 3000 SSS and 100% Simrad EM3000 MBES. The object is wreckage located within the charted channel limits but outside the buoyage of the channel. The object is located near a charted wreckage area and a charted foul area. Due to the object's location near exposed and charted wreckage and outside the buoyage of the channel the object was not submitted as a DToN.

Feature Correlation

Address	Feature	Range	Azimuth	Status
h11398/3002_mbes/2007-115/091_1410	62/88	0.00	000.0	Primary
h11398/3002sss500k/2007-114/sonar_data070424173300	0002	14.56	205.7	Secondary
h11398/3002_mbes/2007-115/091_1410	22/109	15.10	245.3	Secondary (grouped)

Hydrographer Recommendations

The hydrographer recommends the object be charted as a dangerous wreck, LD and position as surveyed.

Cartographically-Rounded Depth (Affected Charts):

22ft (12331_1, 12327_1)

3 ½fm (12300_1, 13003_1, 14500_1)

6.7m (5161_1)

S-57 Data

Geo object 1: Wreck (WRECKS)
Attributes: CATWRK - 2:dangerous wreck
 CONVIS - 2:not visual conspicuous

SORDAT - 20070425

TECSOU - 2:found by side scan sonar

VALSOU - 6.667 m

VERDAT - 12:Mean lower low water

WATLEV - 3:always under water/submerged

Office Notes

Concur - Chart a wreck with a depth of 22 feet in Latitude 40° 33' 25.9" N, Longitude 074° 13' 04.7" W.

Chart 22 Wk and danger curve.

Feature Images

1.5) 8064/6 Wreck

Survey Summary

Survey Position: 40° 33' 32.4" N, 074° 12' 53.0" W
Least Depth: 4.74 m (= 15.56 ft = 2.594 fm = 2 fm 3.56 ft)
TPU ($\pm 1.96\sigma$): **THU (TPEh)** ± 1.965 m ; **TVU (TPEv)** ± 0.249 m
Timestamp: 2007-115.14:08:41.719 (04/25/2007)
Survey Line: h11398 / 3002_mbes / 2007-115 / 096_1353
Profile/Beam: 8064/6
Charts Affected: 12331_1, 12327_1, 12300_1, 5161_1, 13003_1, 14500_1

Remarks:

The area was covered with 100% Klein 3000 SSS and 100% Simrad EM3000 MBES. The Object is a wreck awash located outside the channel and near a charted wreckage area.

Feature Correlation

Address	Feature	Range	Azimuth	Status
h11398/3002_mbes/2007-115/096_1353	8064/6	0.00	000.0	Primary
h11398/3002sss500k/2007-114/sonar_data070424173300	0003	7.33	258.4	Secondary

Hydrographer Recommendations

The hydrographer recommends the object be charted as a dangerous wreck.

Cartographically-Rounded Depth (Affected Charts):

15ft (12331_1, 12327_1)

2 ½fm (12300_1, 13003_1, 14500_1)

4.7m (5161_1)

S-57 Data

Geo object 1: Wreck (WRECKS)
Attributes: CATWRK - 2:dangerous wreck
 CONVIS - 1:visual conspicuous
 SORDAT - 20070425
 TECSOU - 2:found by side scan sonar

VALSOU - 4.744 m

VERDAT - 12:Mean lower low water

WATLEV - 5:awash

Office Notes

Concur. Chart a wreck with a depth of 15 feet in Latitude 40° 33' 32.4" N, Longitude 074° 12' 53.0" W

Chart 15 Wk and danger curve.

Feature Images

1.6) 4286/75 Debris

Survey Summary

Survey Position: 40° 35' 48.8" N, 074° 12' 06.7" W
Least Depth: 8.06 m (= 26.44 ft = 4.406 fm = 4 fm 2.44 ft)
TPU ($\pm 1.96\sigma$): **THU (TPEh)** ± 1.964 m ; **TVU (TPEv)** ± 0.244 m
Timestamp: 2007-115.12:17:15.003 (04/25/2007)
Survey Line: h11398 / 3002_mbes / 2007-115 / 109_1210
Profile/Beam: 4286/75
Charts Affected: 12333_1, 12327_1, 12300_1, 5161_1, 13003_1, 14500_1

Remarks:

The feature is an OBSTN found by Klein 3000 SSS developed with Simrad EM3000 MBES. The Feature is located on a bank with LD deeper in agreement with charted depths in the area.

Feature Correlation

Address	Feature	Range	Azimuth	Status
h11398/3002_mbes/2007-115/109_1210	4286/75	0.00	000.0	Primary
h11398/3002sss500k/2007-099/sonar_data070409144000	0001	11.38	044.1	Secondary

Hydrographer Recommendations

The hydrographer recommends the object be charted as an OBSTN, LD and position as surveyed.

S-57 Data

[None]

Office Notes

Do not concur. Item is deeper than surrounding depths. Determined to be a rock during office processing.

Do not chart obstruction. Chart current survey depths if needed.

Feature Images

1.7) 553/50 RKs or Debris

Survey Summary

Survey Position: 40° 35' 26.6" N, 074° 12' 25.4" W
Least Depth: 7.91 m (= 25.96 ft = 4.327 fm = 4 fm 1.96 ft)
TPU ($\pm 1.96\sigma$): **THU (TPEh)** ± 1.963 m ; **TVU (TPEv)** ± 0.244 m
Timestamp: 2007-115.12:11:12.195 (04/25/2007)
Survey Line: h11398 / 3002_mbes / 2007-115 / 109_1210
Profile/Beam: 553/50
Charts Affected: 12333_1, 12327_1, 12300_1, 5161_1, 13003_1, 14500_1

Remarks:

The area was covered with 100% Klein 3000 SSS and 100% Simrad EM3000 MBES. The contact is a rocky area or debris located outside the channel, LD in agreement with charted depths.

Feature Correlation

Address	Feature	Range	Azimuth	Status
h11398/3002_mbes/2007-115/109_1210	553/50	0.00	000.0	Primary
h11398/3002_mbes/2007-115/109_1228	2838/36	18.07	282.0	Secondary
h11398/3002sss500k/2007-113/sonar_data070423153000	0007	19.74	319.8	Secondary
h11398/3002_mbes/2007-115/109_1210	442/64	25.68	030.3	Secondary (grouped)
h11398/3002_mbes/2007-115/109_1228	2937/26	34.34	002.1	Secondary

Hydrographer Recommendations

The hydrographer recommends a representative sounding be charted.

S-57 Data

[None]

Office Notes

Concur - Chart current survey depths.

1.8) 1541/124 Debris

Survey Summary

Survey Position: 40° 34' 17.2" N, 074° 12' 44.0" W
Least Depth: 7.24 m (= 23.76 ft = 3.960 fm = 3 fm 5.76 ft)
TPU ($\pm 1.96\sigma$): **THU (TPEh)** ± 1.968 m ; **TVU (TPEv)** ± 0.274 m
Timestamp: 2007-115.13:40:06.805 (04/25/2007)
Survey Line: h11398 / 3002_mbes / 2007-115 / 112_1337
Profile/Beam: 1541/124
Charts Affected: 12331_1, 12327_1, 12300_1, 5161_1, 13003_1, 14500_1

Remarks:

The area was covered with 100% Klein 3000 SSS and 100% Simrad EM3000 MBES. The objects are small obstructions or debris located outside of federal channel.

Feature Correlation

Address	Feature	Range	Azimuth	Status
h11398/3002_mbes/2007-115/112_1337	1541/124	0.00	000.0	Primary
h11398/3002_mbes/2007-115/113_1242	44/14	7.36	204.3	Secondary
h11398/3002sss500k/2007-113/sonar_data070423153000	0008	9.78	358.6	Secondary
h11398/3002_mbes/2007-115/112_1337	1550/51	13.66	113.1	Secondary (grouped)
h11398/3002_mbes/2007-115/112_1337	1550/50	13.71	113.1	Secondary (grouped)
h11398/3002_mbes/2007-115/112_1337	1550/49	13.75	113.0	Secondary (grouped)
h11398/3002_mbes/2007-115/112_1337	1550/48	13.79	113.0	Secondary (grouped)
h11398/3002_mbes/2007-115/112_1337	1550/45	13.94	112.9	Secondary (grouped)
h11398/3002_mbes/2007-115/112_1337	1600/122	20.66	194.5	Secondary (grouped)
h11398/3002sss500k/2007-113/sonar_data070423153000	0003	32.23	196.9	Secondary
h11398/3002_mbes/2007-219/037_1542	399/80	41.93	192.7	Secondary
h11398/3002_mbes/2007-115/112_1337	1672/122	43.96	194.1	Secondary (grouped)

Hydrographer Recommendations

The hydrographer recommends the objects be charted as obstructions with a LD and position as surveyed.

S-57 Data

[None]

Office Notes

Do not concur - Objects are not within the channel and are deeper than surrounding depths.
Determined to be rocky during office processing. Chart current survey depths.

Feature Images

1.9) 5728/84 Rocks or Debris

Survey Summary

Survey Position: 40° 34' 56.3" N, 074° 12' 35.0" W
Least Depth: 7.70 m (= 25.27 ft = 4.212 fm = 4 fm 1.27 ft)
TPU ($\pm 1.96\sigma$): **THU (TPEh)** ± 1.963 m ; **TVU (TPEv)** ± 0.243 m
Timestamp: 2007-115.13:47:10.633 (04/25/2007)
Survey Line: h11398 / 3002_mbes / 2007-115 / 112_1337
Profile/Beam: 5728/84
Charts Affected: 12331_1, 12333_1, 12327_1, 12300_1, 5161_1, 13003_1, 14500_1

Remarks:

The area was covered with 100% Klein 3000 SSS and 100% Simrad EM3000 MBES. The contact is an OBSTN or possible cultural material from shoreline construction/ruins on shore.

Feature Correlation

Address	Feature	Range	Azimuth	Status
h11398/3002_mbes/2007-115/112_1337	5728/84	0.00	000.0	Primary
h11398/3002sss500k/2007-113/sonar_data070423153000	0002	12.44	359.4	Secondary (grouped)

Hydrographer Recommendations

The hydrographer recommends charting the object as an obstruction, LD and position as surveyed.

S-57 Data

[None]

Office Notes

Concur - Chart an obstruction with a depth of 25 feet in Latitude 40° 34' 56.3" N,

Longitude 074° 12' 35.0" W. Add 25 Obstn and danger curve.

Feature Images

1.10) 2038/99 Debris/Rks

Survey Summary

Survey Position: 40° 32' 36.2" N, 074° 15' 11.4" W
Least Depth: 10.13 m (= 33.22 ft = 5.536 fm = 5 fm 3.22 ft)
TPU ($\pm 1.96\sigma$): **THU (TPEh)** ± 1.967 m ; **TVU (TPEv)** ± 0.248 m
Timestamp: 2007-115.13:06:25.312 (04/25/2007)
Survey Line: h11398 / 3002_mbes / 2007-115 / 114_1302
Profile/Beam: 2038/99
Charts Affected: 12331_1, 12327_1, 12300_1, 5161_1, 13003_1, 14500_1

Remarks:

The area was covered with 100% Klein 3000 SSS and 100% Simrad EM3000 MBES. The objects appear to be debris outside the channel near a pier.

Feature Correlation

Address	Feature	Range	Azimuth	Status
h11398/3002_mbes/2007-115/114_1302	2038/99	0.00	000.0	Primary
h11398/3002_mbes/2007-115/114_1307	305/103	12.06	273.4	Secondary
h11398/3002_mbes/2007-115/114_1307	270/89	15.17	320.9	Secondary
h11398/3002_mbes/2007-115/114_1302	2023/16	17.35	247.5	Secondary (grouped)
h11398/3002sss500k/2007-113/sonar_data070423160000	0002	19.52	282.5	Secondary

Hydrographer Recommendations

The hydrographer recommends a representative sounding be charted.

S-57 Data

[None]

Office Notes

Concur with clarification. Do not chart obstn. Chart depths from current survey.

1.11) 2032/123 OBSTN

Survey Summary

Survey Position: 40° 33' 51.1" N, 074° 12' 45.9" W
Least Depth: 8.50 m (= 27.88 ft = 4.647 fm = 4 fm 3.88 ft)
TPU ($\pm 1.96\sigma$): **THU (TPEh)** ± 1.974 m ; **TVU (TPEv)** ± 0.330 m
Timestamp: 2007-226.15:54:56.460 (08/14/2007)
Survey Line: h11398 / 3002_mbes / 2007-226 / 006_1550
Profile/Beam: 2032/123
Charts Affected: 12331_1, 12327_1, 12300_1, 5161_1, 13003_1, 14500_1

Remarks:

The area was covered with 100% Klein 3000 SSS and 100% Simrad EM3000 MBES. The feature is an OBSTN found by Klein 3000 SSS developed by Simrad EM3000 MBES.

Feature Correlation

Address	Feature	Range	Azimuth	Status
h11398/3002_mbes/2007-226/006_1550	2032/123	0.00	000.0	Primary
h11398/3002sss500k/2007-113/sonar_data070423174000	0005	8.04	207.0	Secondary (grouped)

Hydrographer Recommendations

The hydrographer recommends the object be charted as an OBSTN, LD and position as surveyed.

Cartographically-Rounded Depth (Affected Charts):

28ft (12331_1, 12327_1)

4 ½fm (12300_1, 13003_1, 14500_1)

8.5m (5161_1)

S-57 Data

Geo object 1: Obstruction (OBSTRN)
Attributes: QUASOU - 6:least depth known
 SORDAT - 20070814
 TECSOU - 2:found by side scan sonar
 VALSOU - 8.499 m

VERDAT - 12:Mean lower low water
WATLEV - 3:always under water/submerged

Office Notes

Concur - Chart an obstruction with a depth of 28 feet in Latitude 40° 33' 51.1" N, Longitude 074° 12' 45.9" W.

Chart 28 Obstn and danger curve.

Feature Images

1.12) 441/112 OBSTN

Survey Summary

Survey Position: 40° 35' 20.0" N, 074° 12' 28.2" W
Least Depth: 10.33 m (= 33.89 ft = 5.649 fm = 5 fm 3.89 ft)
TPU ($\pm 1.96\sigma$): **THU (TPEh)** ± 1.968 m ; **TVU (TPEv)** ± 0.256 m
Timestamp: 2007-115.12:34:17.494 (04/25/2007)
Survey Line: h11398 / 3002_mbes / 2007-115 / 111_1233
Profile/Beam: 441/112
Charts Affected: 12333_1, 12327_1, 12300_1, 5161_1, 13003_1, 14500_1

Remarks:

The area was covered with 200% Klein 3000 SSS and 100% Simrad EM3000 MBES. The object appears to be rocks on the edge of the channel.

Feature Correlation

Address	Feature	Range	Azimuth	Status
h11398/3002_mbes/2007-115/111_1233	441/112	0.00	000.0	Primary
h11398/3002sss500k/2007-113/sonar_data070423153000	0006	13.12	008.2	Secondary (grouped)

Hydrographer Recommendations

The hydrographer recommends the object be charted as an OBSTN, LD and position as surveyed.

Cartographically-Rounded Depth (Affected Charts):

34ft (12333_1, 12327_1)

5 ½fm (12300_1, 13003_1, 14500_1)

10.3m (5161_1)

S-57 Data

Geo object 1: Obstruction (OBSTRN)
Attributes: QUASOU - 6:least depth known
 SORDAT - 20070425
 TECSOU - 3:found by multi-beam
 VALSOU - 10.331 m

VERDAT - 12:Mean lower low water

WATLEV - 3:always under water/submerged

Office Notes

Concur - Chart an obstruction with a depth of 34 ft in Lat. 40° 35' 20.0" N, Lon. 074° 12' 28.2" W. Chart 34 Obstn and danger curve.

Feature Images

1.13) 2830/87 OBSTN

Survey Summary

Survey Position: 40° 32' 53.2" N, 074° 14' 36.5" W
Least Depth: 2.50 m (= 8.20 ft = 1.367 fm = 1 fm 2.20 ft)
TPU ($\pm 1.96\sigma$): **THU (TPEh)** ± 1.962 m ; **TVU (TPEv)** ± 0.241 m
Timestamp: 2007-136.12:59:30.924 (05/16/2007)
Survey Line: h11398 / 3002_mbes / 2007-136 / 080_1253
Profile/Beam: 2830/87
Charts Affected: 12331_1, 12327_1, 12300_1, 5161_1, 13003_1, 14500_1

Remarks:

The area was covered with 100% Simrad EM3000 MBES. The object is an OBSTN near a pier face.

Feature Correlation

Address	Feature	Range	Azimuth	Status
h11398/3002_mbes/2007-136/080_1253	2830/87	0.00	000.0	Primary

Hydrographer Recommendations

The hydrographer recommends the object be charted as an OBSTN.

Cartographically-Rounded Depth (Affected Charts):

8ft (12331_1, 12327_1)

1 ¼fm (12300_1, 13003_1, 14500_1)

2.5m (5161_1)

S-57 Data

Geo object 1: Obstruction (OBSTRN)
Attributes: QUASOU - 6:least depth known
 SORDAT - 20070516
 TECSOU - 3:found by multi-beam
 VALSOU - 2.500 m
 VERDAT - 12:Mean lower low water
 WATLEV - 3:always under water/submerged

Office Notes

Do not concur - Item determined insignificant during office processing. Do not chart.

1.14) 1464/80 OBSTN

Survey Summary

Survey Position: 40° 32' 55.0" N, 074° 14' 36.7" W
Least Depth: 3.12 m (= 10.23 ft = 1.705 fm = 1 fm 4.23 ft)
TPU ($\pm 1.96\sigma$): **THU (TPEh)** ± 1.963 m ; **TVU (TPEv)** ± 0.241 m
Timestamp: 2007-136.13:11:48.715 (05/16/2007)
Survey Line: h11398 / 3002_mbes / 2007-136 / 083_1309
Profile/Beam: 1464/80
Charts Affected: 12331_1, 12327_1, 12300_1, 5161_1, 13003_1, 14500_1

Remarks:

The area was covered with 100% Simrad EM3000 MBES. The object is an OBSTN.

Feature Correlation

Address	Feature	Range	Azimuth	Status
h11398/3002_mbes/2007-136/083_1309	1464/80	0.00	000.0	Primary

Hydrographer Recommendations

The hydrographer recommends the object be charted as an OBSTN, LD and position as surveyed.

Cartographically-Rounded Depth (Affected Charts):

10ft (12331_1, 12327_1)

1 $\frac{3}{4}$ fm (12300_1, 13003_1, 14500_1)

3.1m (5161_1)

S-57 Data

Geo object 1: Obstruction (OBSTRN)
Attributes: SORDAT - 20070516
 VALSOU - 3.118 m
 WATLEV - 3:always under water/submerged

Office Notes

Do not concur - Item determined insignificant during office processing. Do not chart.

1.15) Structure

Survey Summary

Survey Position: 40° 38' 02.1" N, 074° 12' 05.9" W
Least Depth: [None]
TPU ($\pm 1.96\sigma$): **THU (TPEh)** [None] ; **TVU (TPEv)** [None]
Timestamp: 2008-008.13:46:32.000 (01/08/2008)
DP Dataset: h11398 / 3002_vbes / 2008-008 / h11398_shorelinetgt
Profile/Beam: 2/1
Charts Affected: 12333_1, 12327_1, 12300_1, 5161_1, 13003_1, 14500_1

Remarks:

The Object appears to be the ruins of a structure or platform.

Feature Correlation

Address	Feature	Range	Azimuth	Status
h11398/3002_vbes/2008-008/h11398_shorelinetgt	2/1	0.00	000.0	Primary

Hydrographer Recommendations

The hydrographer recommends the object be charted as exposed Piles.

S-57 Data

Geo object 1: Pile (PILPNT)
Attributes: CONDTN - 2:ruined
 CONVIS - 1:visual conspicuous
 SORDAT - 20080108

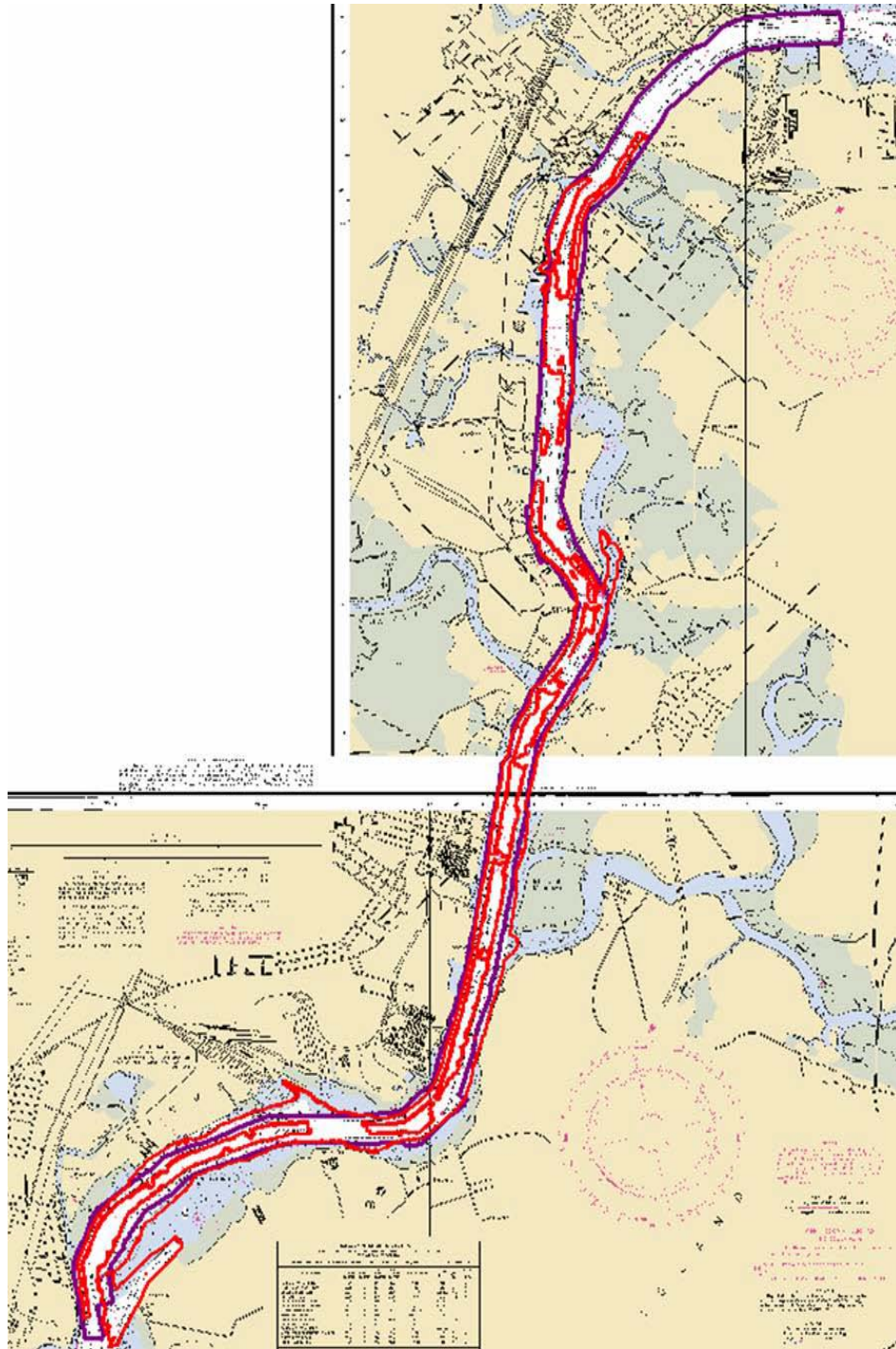
Office Notes

Concur. Chart Exposed Piles.



APPENDIX III

PROGRESS SKETCH



APPENDIX IV

TIDES AND WATER LEVELS



UNITED STATES DEPARTMENT OF COMMERCE
National Oceanic and Atmospheric Administration
National Ocean Service
Silver Spring, Maryland 20910



**Preliminary as Final Tidal Zoning
for OPR-B310-NRT5-2007, H11398
New York Harbor**

NY13
Time Corrector +12 mins
Range Corrector x 1.10
Reference 853-1680

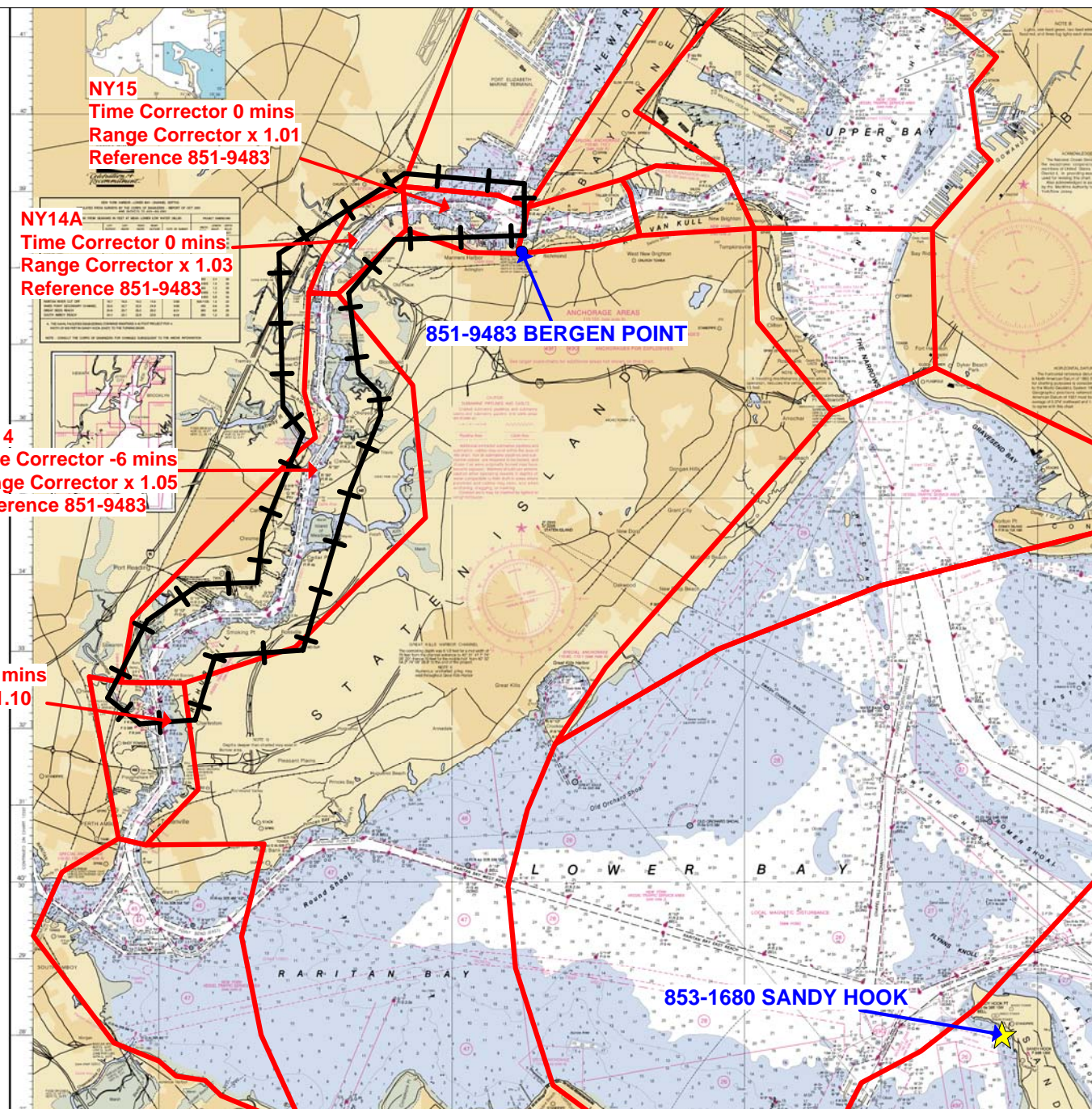
NY14
Time Corrector -6 mins
Range Corrector x 1.05
Reference 851-9483

NY14A
Time Corrector 0 mins
Range Corrector x 1.03
Reference 851-9483

NY15
Time Corrector 0 mins
Range Corrector x 1.01
Reference 851-9483

851-9483 BERGEN POINT

853-1680 SANDY HOOK



APPENDIX V
SUPPLEMENTAL SURVEY RECORDS AND CORRESPONDENCES

V.1. COAST PILOT REPORT, NOAA FORM 77-6

No corrections or additions required.

V.2. BOTTOM SAMPLE, NOAA FORM 75-44

No bottom samples were taken.

V.3. AIDS TO NAVIGATION, NOAA FORM 76-40

Four incorrectly charted AToNs (Gulfport Pile Light A, B, C, and D) were submitted as DToNs on January 10, 2008. No other AToNs within the survey limits of H11398 were found to be significantly off station.

Subject: Re: H11398 DTON#4

From: "ocs.ndb" <OCS.NDB@noaa.gov>

Date: Fri, 07 Aug 2009 12:41:09 -0400

To: "Norris.A.Wike" <Norris.A.Wike@noaa.gov>, Richard T Brennan <Richard.T.Brennan@noaa.gov>, James M Crocker <James.M.Crocker@noaa.gov>, Matt Wingate <matt.wingate@noaa.gov>, Castle E Parker <Castle.E.Parker@noaa.gov>, Andrew Kampia <Andrew.Kampia@noaa.gov>, Dave Neander <Dave.Neander@noaa.gov>, Ed Martin <Ed.Martin@noaa.gov>, Howard Danley <Howard.Danley@noaa.gov>, Joseph Robinson <Joseph.Robinson@noaa.gov>, Ken Forster <Ken.Forster@noaa.gov>, Kevin Shaw <Kevin.Shaw@noaa.gov>, Mark Griffin <Mark.Griffin@noaa.gov>, NDB e-Mailbox <OCS.NDB@noaa.gov>, Richard Sillcox <Richard.Sillcox@noaa.gov>, Robert Ramsey <Robert.Ramsey@noaa.gov>, Stephen Hill <Stephen.Hill@noaa.gov>, Tara Wallace <Tara.Wallace@noaa.gov>, Tom Loeper <Thomas.Loeper@noaa.gov>, Travis Newman <Travis.Newman@noaa.gov>

L-1086-2009 and DD-15208 have been registered by the Nautical Data Branch and directed to Products Branch C for processing.

The DtoN reported is a 30-foot shoal in the Elizabethport Reach of Arthur Kill, NJ.

The following charts are affected:

12333 kapp 2239

12327 kapp 2245

The following ENC is affected:

US5NJ13M

References:

H-11398

OPR-B310-NRT5-07

This information was discovered during office processing and submitted by AHB.

Norris.A.Wike wrote:

Good Day,

Please find attached a zip file for survey H11398 DtoN report #4, 30 ft depth, for submission to Marine Chart Division (MCD).

The contents of the attached WinZip file were generated at Atlantic Hydrographic Branch. The attached zip file contains a DtoN Letter (PDF) and a Pydro XML file.

If you have any questions, please direct them back to me; email me or call 757-441-6586.

Thank you for your assistance with this matter.

Norris Wike

H11398_AHB_DtoN#4.zip

Content-Type: application/x-zip-compressed

Content-Encoding: base64

Subject: Re: H11398 DTON#3

From: "ocs.ndb" <OCS.NDB@noaa.gov>

Date: Thu, 06 Aug 2009 11:27:30 -0400

To: "Norris.A.Wike" <Norris.A.Wike@noaa.gov>, Richard T Brennan <Richard.T.Brennan@noaa.gov>, James M Crocker <James.M.Crocker@noaa.gov>, Matt Wingate <matt.wingate@noaa.gov>, Castle E Parker <Castle.E.Parker@noaa.gov>, Andrew Kampia <Andrew.Kampia@noaa.gov>, Dave Neander <Dave.Neander@noaa.gov>, Ed Martin <Ed.Martin@noaa.gov>, Howard Danley <Howard.Danley@noaa.gov>, Jim Crocker <James.M.Crocker@noaa.gov>, Joseph Robinson <Joseph.Robinson@noaa.gov>, Ken Forster <Ken.Forster@noaa.gov>, Kevin Shaw <Kevin.Shaw@noaa.gov>, Mark Griffin <Mark.Griffin@noaa.gov>, NDB e-Mailbox <OCS.NDB@noaa.gov>, Richard Sillcox <Richard.Sillcox@noaa.gov>, Robert Ramsey <Robert.Ramsey@noaa.gov>, Stephen Hill <Stephen.Hill@noaa.gov>, Tara Wallace <Tara.Wallace@noaa.gov>, Tom Loeper <Thomas.Loeper@noaa.gov>, Travis Newman <Travis.Newman@noaa.gov>

L-1078-2009 and DD-15179 have been registered by the Nautical Data Branch and directed to Products Branch C for processing.

The DtoN reported is a shoal on the Elizabethport Reach of Arthur Kill, NJ.

The following charts are affected:

12333 kapp 2239

12327 kapp 2245

The following ENC's are affected:

US5NJ13M

References:

H-11398

OPR-B310-NRT5-07

This information was discovered during office processing and submitted by AHB.

Norris.A.Wike wrote:

Good Day,

Please find attached a zip file for survey H11398 DtoN report #3, 30 ft depth, for submission to Marine Chart Division (MCD).

The contents of the attached WinZip file were generated at Atlantic Hydrographic Branch. The attached zip file contains a DtoN Letter (PDF) and a Pydro XML file.

If you have any questions, please direct them back to me; email me or call 757-441-6586.

Thank you for your assistance with this matter.

Norris Wike

H11398_AHB_DtoN3.zip

Content-Type: application/x-zip-compressed

Content-Encoding: base64

Subject: [Fwd: H11398 DTON]

From: "LCDR Rick Brennan, NOAA" <Richard.T.Brennan@noaa.gov>

Date: Fri, 07 Aug 2009 10:00:22 -0400

To: Norris A Wike <Norris.A.Wike@noaa.gov>, 'Gene Parker' <Castle.E.Parker@noaa.gov>, Edward Owens <Edward.Owens@noaa.gov>

Norris,

FYI on the recent DTON. Please add this to the supplemental correspondence.

Rick



LCDR Rick Brennan, NOAA
Chief, Atlantic Hydrographic Branch
439 West York Street
Norfolk, VA 23510
Office: 757-441-6746
Cell: 443-994-3301

Learn about "America's Seventh Service":

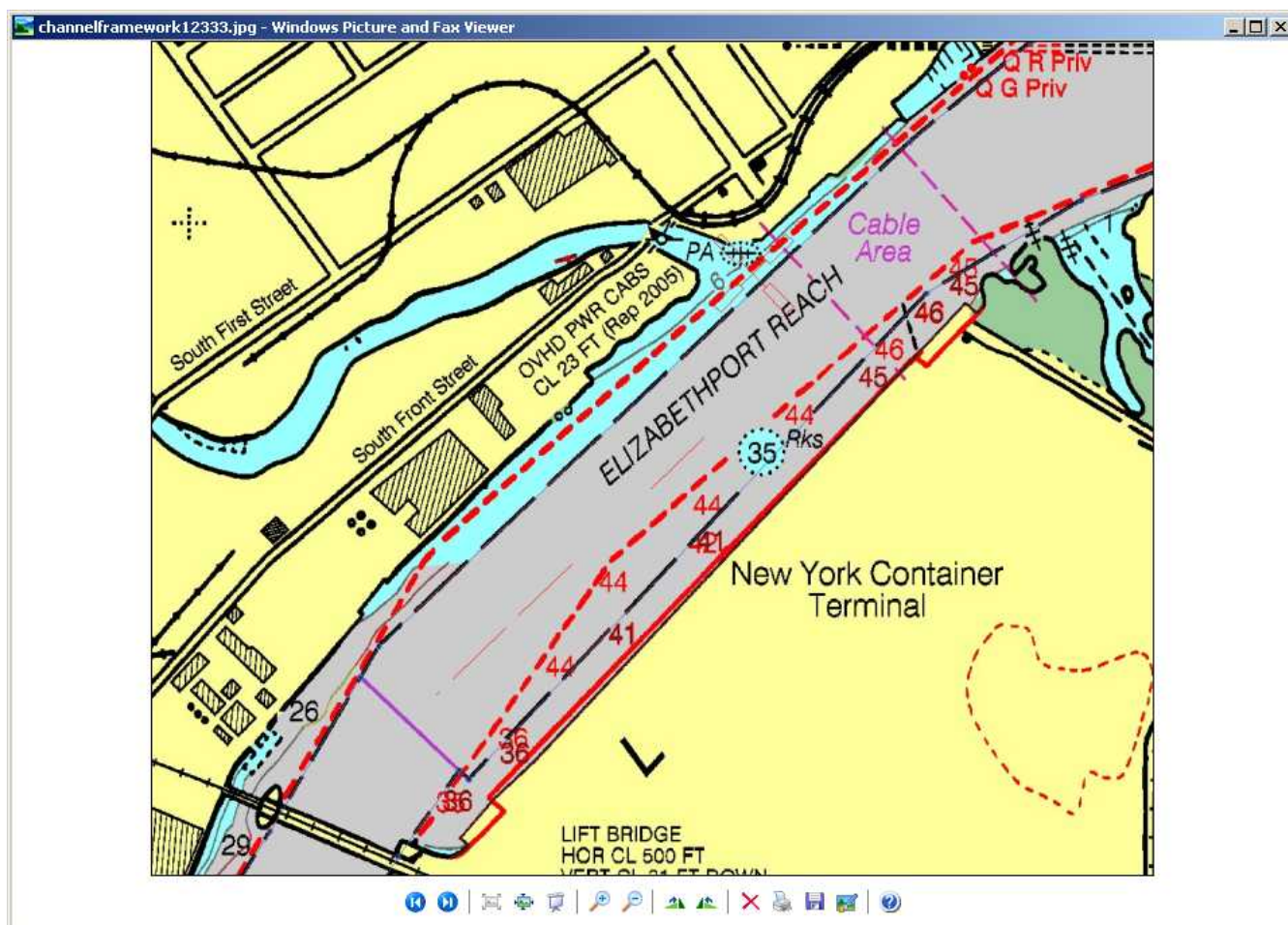
www.noaacorps.noaa.gov

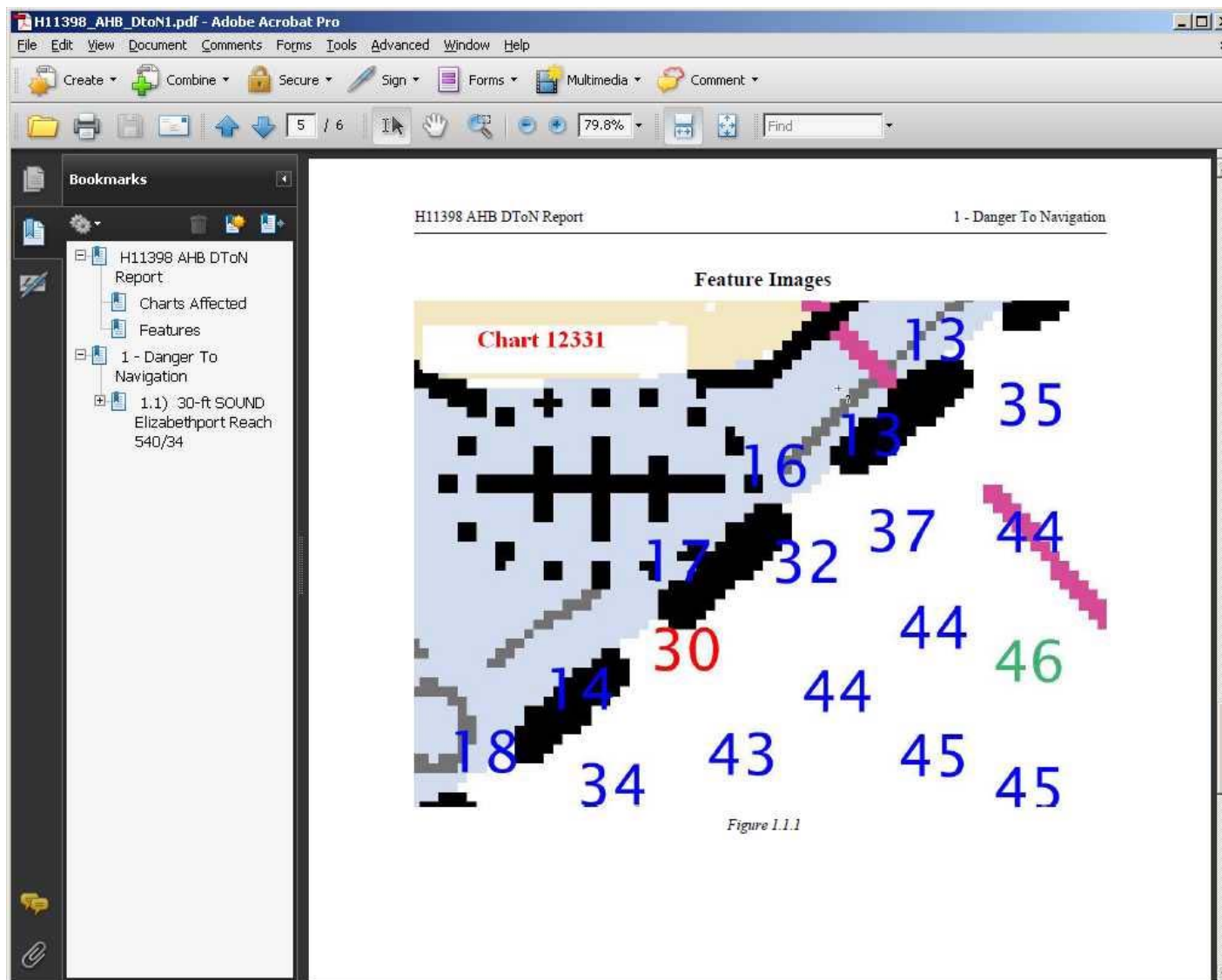
Learn about NOAA's Office of Coast Survey:

www.nauticalcharts.noaa.gov

Michael Gaeta wrote:

After reviewing the DTON for H11398, we noticed that there was new channel framework at was applied to our team raster chart making the location of the 30ft sounding outside of our channel. With the change in our charts, it is not critical anymore. We are letting you know about this change in the location of the channel because it may have an impact on you processing the hydro. We are in the works in making a notice for the channel changes. Also the chart number in the picture that was sent in the DTON should be "Chart 12333" and not "Chart 12331". Thanks,





Mike Gaeta

--
 Michael L. Gaeta
 Office of Coast Survey, Marine Chart Division
 National Oceanic and Atmospheric Administration
 Products Branch C
 NOAA Site Number: 301-713-2722 x103
 N/CS25, SSMC3, Room 6463

Subject: H11398 DTON

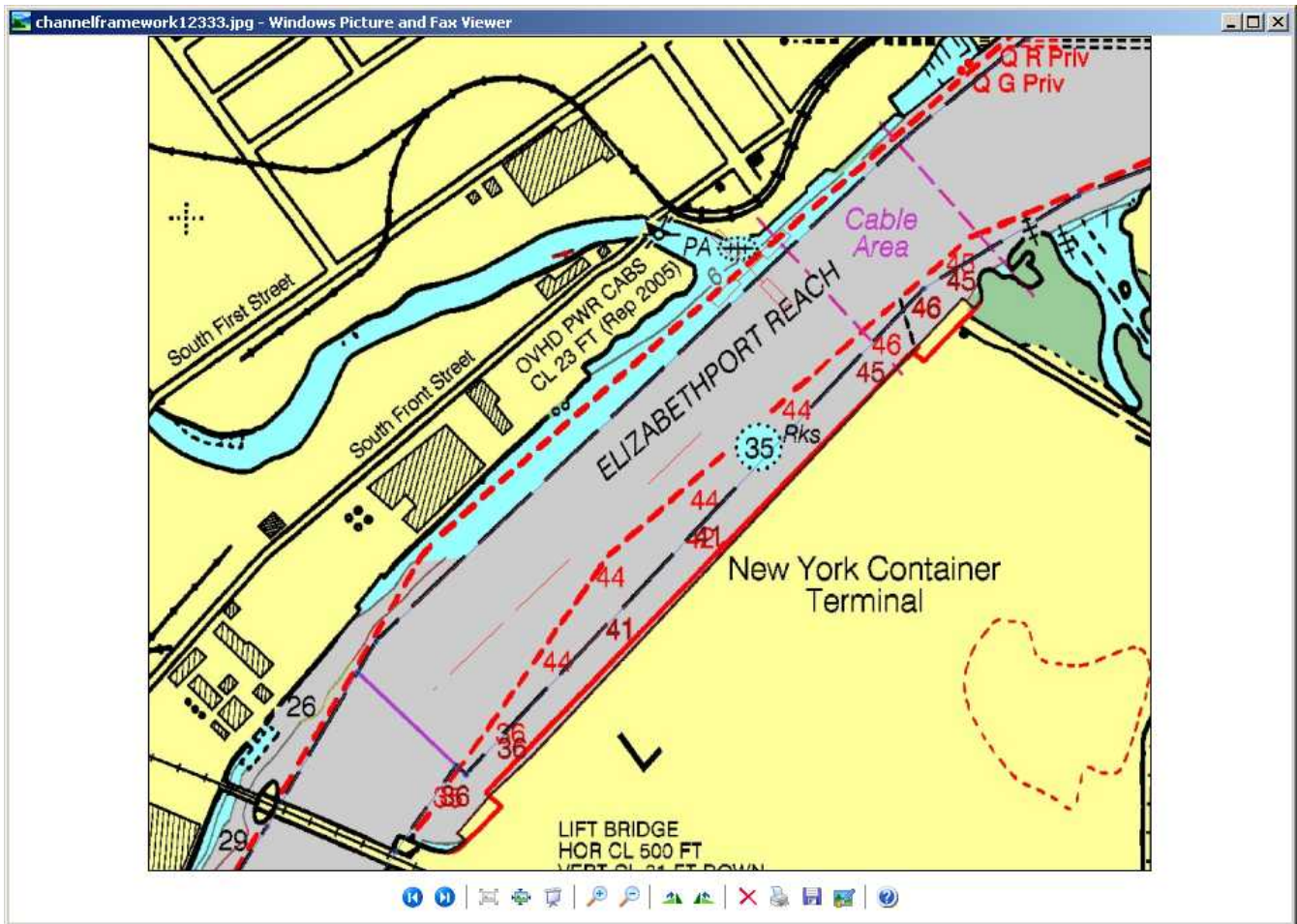
From: Michael Gaeta <Michael.Gaeta@noaa.gov>

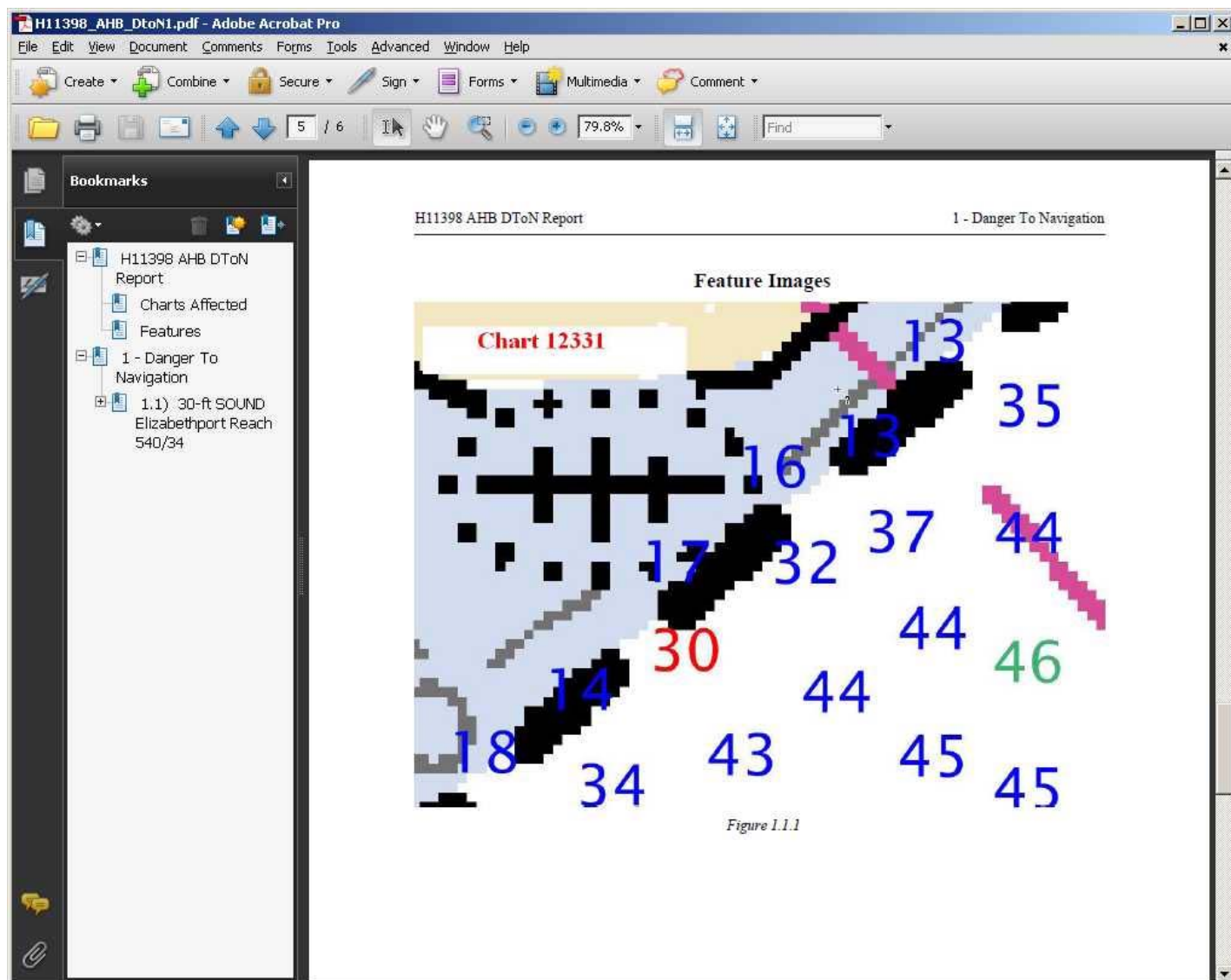
Date: Thu, 06 Aug 2009 14:26:22 -0400

To: AHB <AHB.Chief@noaa.gov>

CC: andrew rothwell <Andrew.Rothwell@noaa.gov>

After reviewing the DTON for H11398, we noticed that there was new channel framework that was applied to our team raster chart making the location of the 30ft sounding outside of our channel. With the change in our charts, it is not critical any more. We are letting you know about this change in the location of the channel because it may have an impact on you processing the hydro. We are in the works in making a notice for the channel changes. Also the chart number in the picture that was sent in the DTON should be "Chart 12333" and not "Chart 12331". Thanks,





Mike Gaeta

--
 Michael L. Gaeta
 Office of Coast Survey, Marine Chart Division
 National Oceanic and Atmospheric Administration
 Products Branch C
 NOAA Site Number: 301-713-2722 x103
 N/CS25, SSMC3, Room 6463

H11398 DTON.eml

Content-Type: message/rfc822
 Content-Encoding: 7bit

H11398 COMPILATION LOG

General Survey Information	
REGISTRY No.	<i>H11398</i>
PROJECT No.	<i>OPR-B310-NRT5-07</i>
FIELD UNIT	<i>NRT5</i>
DATE OF SURVEY	<i>04/09/07 – 08-30-07</i>
LARGEST SCALE CHART	<i>12331, edition #31, 20050701</i>
ADDITIONAL CHARTS	<i>12333, edition #35, 20070801</i>
SOUNDING UNITS	<i>feet</i>

Source Grids	File Name
	<i>H11398_VBES_BASE_5M_FINAL.hns</i>
	<i>H1398_SHOAL_EXTRACT.hns</i>
	<i>H11398_MBES_CUBE_75cm_FINAL.hns</i>
Surfaces	File Name
<i>Combined</i>	<i>H11398_Combined_5m.hns</i>
Final HOBs	File Name
<i>Survey Scale Soundings</i>	<i>H11398_SS_Soundings.hob</i>
<i>Chart Scale Soundings</i>	<i>H11398_CS_Soundings.hob</i>
<i>Contour Layer</i>	<i>H11398_Contours.hob</i>
<i>Feature Layer</i>	<i>H11398_Features.hob</i>
<i>Meta-Objects Layer</i>	<i>H11398_Meta.hob</i>
<i>Blue Notes</i>	<i>H11398_BlueNotes.hob</i>
<i>ENC Retain Soundings</i>	<i>H11398_ENC_Retain.hob</i>

Meta-Objects Attribution	
Acronym	Value
M_COVR	
CATCOV	<i>1</i>
SORDAT	<i>20070830</i>
SORIND	<i>US,US,survey,H11398</i>
M_QUAL	
CATZOC	<i>U</i>
INFORM	<i>H11398, OPR-B310-NRT5-07, NOAA,NRT-5, S3002</i>
POSACC	<i>10</i>
SORDAT	<i>20070830</i>
SORIND	<i>US,US,survey,H11398</i>
SUREND	<i>20070830</i>
SURSTA	<i>20070409</i>
DEPARE	
DRVALV 1	<i>2.0</i>
DRVALV2	<i>50.0</i>
SORDAT	<i>20070830</i>
SORIND	<i>US,US,nsurf,H11398</i>

**ATLANTIC HYDROGRAPHIC BRANCH
EVALUATION REPORT to Accompany
Surveys H11398 (2007)**

This Evaluation Report has been written to supplement and/or clarify the original Descriptive Report. Sections in this report refer to the corresponding sections of the Descriptive Report.

B. DATA ACQUISITION AND PROCESSING

B.1 DATA PROCESSING

The following software was used to process and review data at the Atlantic Hydrographic Branch (AHB):

CARIS HIPS/SIPS version 6.1 SP2 HF 1-4
CARIS BASE Manager 2.1 SP1 HF 1-8
CARIS HOM ENC 3.3
PYDRO, version 8.7 r2586
CARIS S-57 Composer 2.0

B.2 QUALITY CONTROL

H-Cells

The AHB source depth grid was generated from the field 75cm MBES source grids and a 5m resolution VBES grid created from an extraction of the shoal layer. This process was used to create a 5m resolution combined surface which survey scale soundings were extracted from the AHB generated 5m Base surface at a 1:10000 scale using a radius of 1m. Soundings were selected for charting by hand using the latest raster charts 12331 and 12333. Soundings were then checked for conflicts, corrected to remove conflicts, and edited to allow for proper sounding compilation placement with respect to existing charted depths outside the survey area. The BASE surface was referenced when selecting the chart scale soundings, to ensure that the selected soundings portrayed the bathymetry within the common area.

Depth curves were drawn from the Base surface by hand. The contours are included in the final H-Cell product. The curves were utilized during chart scale sounding selection at AHB.

H11398

The compilation products and Stand Alone HOB Files (SAHOB) are detailed in the Compilation Process Log of this document. All individual SAHOB files were assembled in BASE Editor during H-Cell compilation.

The completed H-Cell was exported as a Base Cell File (ENC.000) in S-57 format with all values in metric units. The metric equivalent ENC.000 file was then converted to NOAA chart units (ENC_CS.000) with all values measured in feet following NOAA sounding rounding rules.

The H11398 CARIS H-Cell final deliverables include the following products:

H11398_CS.000	1:15,000 Scale	H11398 Selected Soundings (Chart Scale)
H11938_SS.000	1:10,000 Scale	H11398 Selected Soundings (Survey Scale)

JUNCTIONS

H11399 (2008) to the north

The present survey junctions to the south end with survey H11399 (2008). Present survey soundings are 1 foot deeper than survey H11399 (2008).

C. VERTICAL AND HORIZONTAL CONTROL

Final vertical correction processing was completed by the field unit with no additional corrections required by Atlantic Hydrographic Branch personnel. The field unit applied verified water levels in conjunction with the preliminary tidal zoning which was accepted and approved by N/OPSI CO-OPS as the final zoning for H11398. Sounding datum is Mean Lower Low Water (MLLW). Vertical datum is Mean High Water (MHW).

Horizontal control used for this survey during data acquisition is based upon the North American Datum of 1983 (NAD83), UTM projection zone 18. Office ENC processing of this survey required translating the datum to meet S-57 ENC requirements. The horizontal geodetic datum was translated to Latitude and Longitude (LLDG) World Geodetic System-84 (WGS-84) during CARIS Base Manager processing.

D. RESULTS AND RECOMMENDATIONS

<u>Chart Comparison</u>	<u>12331 (31st. Edition, Jul. /05</u> Corrected through NM, Jul. 09/05 Corrected through LNM, Jun. 28/05 Scale 1:15,000
-------------------------	---------------------------------------------------------------------------------------------------------------------------------------------

<u>Chart Comparison</u>	<u>12333 (35th. Edition, Aug. /07</u> Corrected through NM, Aug. 11/07 Corrected through LNM, Aug. 07/07 Scale 1:15,000
-------------------------	---------------------------------------------------------------------------------------------------------------------------------------------

<u>ENC Comparison</u>	<u>US5NJ11M</u> Raritan Bay and Southern Part of Arthur Kill Edition 17 Update Application Date 2009-02-05 Issue Date 2009-04-17 References: Charts 12331
-----------------------	-----------------------------------------------------------------------------------------------------------------------------------------------------------------------------

<u>ENC Comparison</u>	<u>US5NJ13M</u> Kill Van Kull and Northern Part of Arthur Kill Edition 25 Update Application Date 2009-02-17 Issue Date 2009-05-20 References: Charts 12333
-----------------------	-------------------------------------------------------------------------------------------------------------------------------------------------------------------------------

Hydrography

The charted Hydrography originates with prior surveys and requires no further consideration. The hydrographer makes adequate chart comparisons in Section D. of the Descriptive Report. The following should be noted:

Charted rocks with a depth of 35 ft in the vicinity of Latitude 40°38'31"N, Longitude 74°11'21"W was disproved by present survey multibeam and side scan sonar. Present survey depths or 45 to 47 feet in the area. It is recommended that the 35 Rks be deleted.

A charted visible wreck in the vicinity of Latitude 40°34'54"N, Longitude 74°12'37"W was disproved by present survey multibeam and side scan sonar. It is recommended that the visible wreck be deleted.

A charted notation **15 ft rep 1999** in the vicinity of Latitude 40°32'50"N, Longitude 74°14'42"W should be revised to **14 ft rep 2007**. It is also recommended that the limit line be revised as shown on H11398_CS.

A charted notation **26 ft rep 1999** in the vicinity of Latitude 40°32'43"N, Longitude 74°14'50"W should be revised to **24 ft rep 2007**.

A charted notation **26 ft rep 1999** in the vicinity of Latitude 40°32'34"N, Longitude 74°14'56"W should be revised to **22 ft rep 2007**.

Adequacy of Survey

The present survey is adequate to supersede the charted bathymetry within the common area. Any features not specifically addressed either in the H-Cell File or the Blue Notes should be retained as charted. Refer to the Descriptive Report for further survey requirements recommended by the hydrographer.

Miscellaneous

Chart compilation was done by Atlantic Hydrographic Branch personnel, in Norfolk, Virginia. Compilation data will be forwarded to Marine Chart Division, Silver Spring, Maryland. See Section D.1. of this report for a list of the Raster Charts and Electronic Navigation Chart (ENC) used for compiling the present survey.

APPROVAL SHEET
H11398

The completed survey has been inspected with regard to survey coverage, delineation of depth curves, representation of critical depths, cartographic symbolization, and verification or disproval of charted data. All revisions and additions made to the H-Cell files during survey processing have been entered in the digital data for this survey. The survey records and digital data comply with National Ocean Service and Office of Coast Survey requirements except where noted in the Descriptive Report and the Evaluation Report.

All final products have undergone a comprehensive review as per the Atlantic Hydrographic Branch Processing Manual and are verified to be accurate and complete except where noted.

Norris A. Wike

Cartographer

Atlantic Hydrographic Branch

I have reviewed the H-Cell files, accompanying data, and reports. This survey and accompanying Marine Chart Division deliverables meet National Ocean Service requirements and standards for products in support of nautical charting except where noted.

Approved:

Richard T. Brennan

Commander, NOAA

Chief, Atlantic Hydrographic Branch